

EXHIBIT 1. LIST OF EXHIBITS and FCC IDENTIFICATION LABEL**LIST OF EXHIBITS**

DESCRIPTION	EXHIBITS	REFERENCE
I. Identification label Information & General Information	1	2.1033 (b) 7 & 2.925
1. Production Plans	1A	2.1031
2. Application References		N/A
3. Data submittal Procedure		
4. Similar Certified Transmitter		
II. Certification Data	2	
III. External Photographs	3	2.1033 (b) 7
IV. Block Diagrams (Circuit Diagrams) <i>confidential</i>	4	2.1033 (b) 5
V. Schematic Diagrams <i>confidential</i>	5	2.1033 (b) 5
VI. Test Report 1	6	2.1033 (b) 6
Part 24E – Supplemental IX300 EMC Test Report with previously Certified Transmitter, a Sierra Wireless, Inc., FCC ID: N7NAC750, Model: AirCard 750.		
1) RF Power Output (2.1046)		
2) Transmitter Radiated Spurious Emissions (2.1053)		
3) Equivalent Isotropic Radiated Power		
<i>Note:</i> Files from the OEM's Certification uploaded for the other test report data and exhibits for items required by Part 24.		
VI. Test Report 2	6	2.1033 (b) 6
Part 15.247 – DTS, Supplemental IX300 EMC Test Report with previously Certified, WLAN, Intentional Radiator, a AirVast Technology, Inc., FCC ID: QDWWM168B, Model: WM168b-Molex.		
1) Conducted Output Power Section 15.247(b)1		
2) EIRP limit Section 15.247(b) 3		
3) Spurious Emissions Section 15.247 (c)		
<i>Note:</i> Files from the OEM's Certification uploaded for the other test report data and exhibits for items required by Part 15.247.		

VI.	Test Report 3	6	2.1033 (b) 6
	Part 15.247 – FHSS, Complete IX300 EMC Test Report with previously Certified Bluetooth Intentional Radiator, Billionton Systems, Inc., FCC ID: NLF-MUBTC2-CLEVO , Model: MUBTUC2.		
	Eleven Common Bluetooth Items	6	
	Six tests required	6	15.247 (a, b, c, g, h)
	1) The Occupied Bandwidth Section 15.247(a)lii		
	2) Conducted Output Power Section 15.247(b)1		
	3) EIRP limit Section 15.247(b)3		
	4) RF safety Section 15.247(b)4		see Exhibit XII
	5) Spurious Emissions Section 15.247 (c)		
	6) Power Spectral Density in Acquisition Mode		N/A to FHSS
VII.	Test Set-up Procedures	7	2.1041
VIII.	Instruction Manual	8	2.1033 (b) 3
IX.	Internal Photographs	9	2.1033 (b) 7
X.	Part List and Tune Up Procedures <i>confidential</i>	10	2.1033
XI.	MPE RF Exposure Information	11	2.1093,15.247(b)4
XII.	Operational Description <i>confidential</i>	12	2.1033(b)1,2,4,8
	Antenna Requirements	12	15.203
XIII.	Cover Letter, Certification Action Requested	13	
	Cover Letter, Request For Confidentiality	13	
	Cover Letter, Authorization to sign FCC Form 731	13	

EXHIBIT 1. FCC IDENTIFICATION LABEL

The FCC Identification label required under section: 47 CFR 2.1033(c) 11 for the

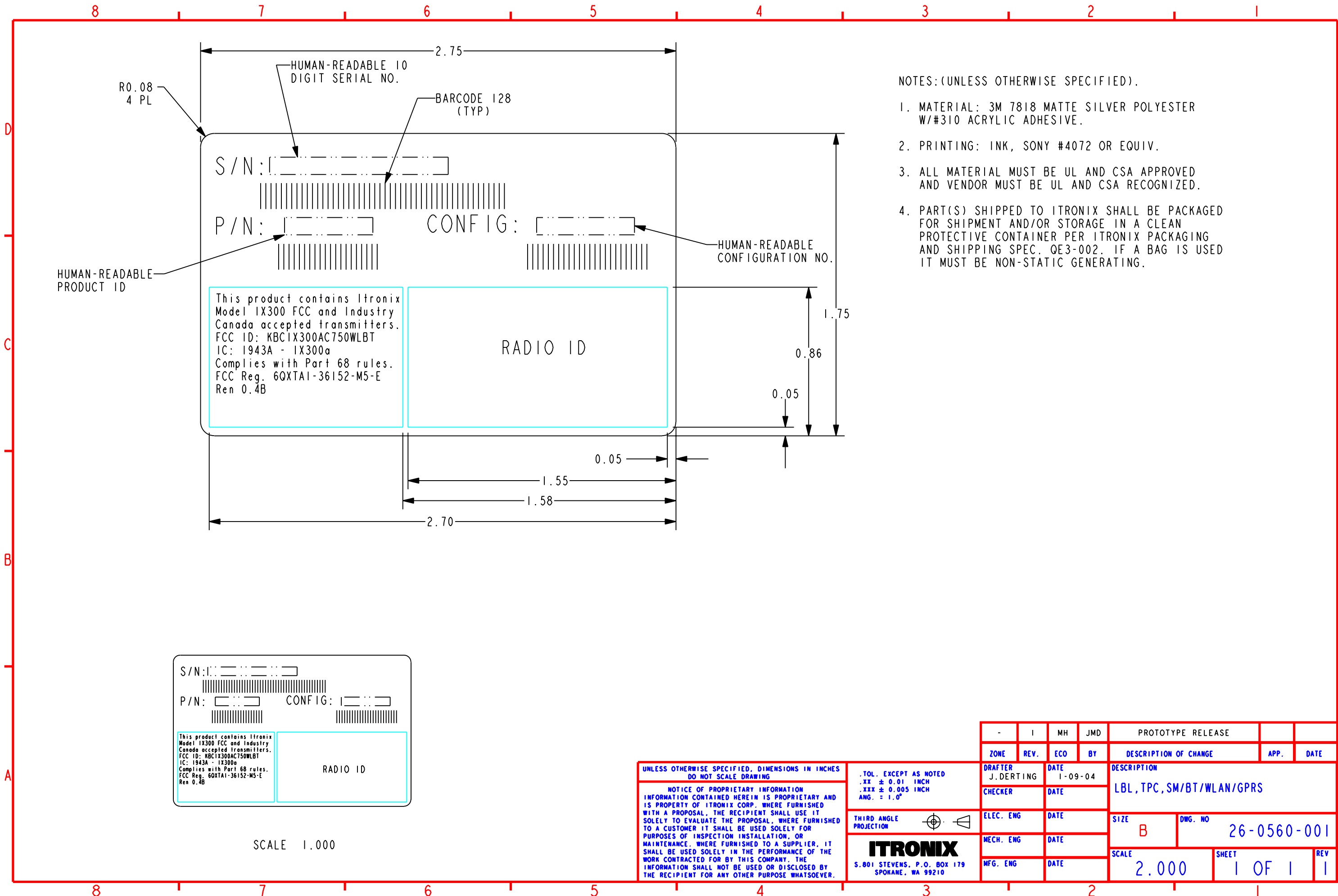
FCC ID: KBCIX300AC750WLBT,

is located on following page. The Part 15.19 Users statement follows that page.

FCC ID label location is on the bottom right side of the Tablet PC. The name **ITRONIX** is on the label heading.

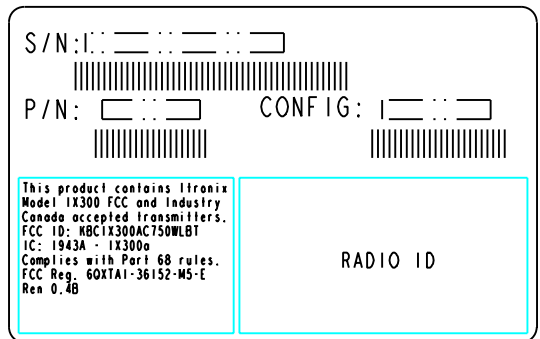
B





NOTES:(UNLESS OTHERWISE SPECIFIED).

1. MATERIAL: 3M 7818 MATTE SILVER POLYESTER W/#310 ACRYLIC ADHESIVE.
2. PRINTING: INK, SONY #4072 OR EQUIV.
3. ALL MATERIAL MUST BE UL AND CSA APPROVED AND VENDOR MUST BE UL AND CSA RECOGNIZED.
4. PART(S) SHIPPED TO ITRONIX SHALL BE PACKAGED FOR SHIPMENT AND/OR STORAGE IN A CLEAN PROTECTIVE CONTAINER PER ITRONIX PACKAGING AND SHIPPING SPEC. QE3-002. IF A BAG IS USED IT MUST BE NON-STATIC GENERATING.



UNLESS OTHERWISE SPECIFIED, DIMENSIONS IN INCHES
DO NOT SCALE DRAWING

NOTICE OF PROPRIETARY INFORMATION
INFORMATION CONTAINED HEREIN IS PROPRIETARY AND
IS PROPERTY OF ITRONIX CORP. WHERE FURNISHED
WITH A PROPOSAL, THE RECIPIENT SHALL USE IT
SOLELY TO EVALUATE THE PROPOSAL, WHERE FURNISHED
TO A CUSTOMER IT SHALL BE USED SOLELY FOR
PURPOSES OF INSPECTION INSTALLATION, OR
MAINTENANCE. WHERE FURNISHED TO A SUPPLIER, IT
SHALL BE USED SOLELY IN THE PERFORMANCE OF THE
WORK CONTRACTED FOR BY THIS COMPANY. THE
INFORMATION SHALL NOT BE USED OR DISCLOSED BY
THE RECIPIENT FOR ANY OTHER PURPOSE WHATSOEVER.

TOL. EXCEPT AS NOTED
.XX ± 0.01 INCH
.XXX ± 0.005 INCH
ANG. = 1.0°

THIRD ANGLE
PROJECTION

ITRONIX
S.801 STEVENS, P.O. BOX 179
SPOKANE, WA 99210

-		I	MH	JMD	PROTOTYPE RELEASE			
ZONE		REV.	ECO	BY	DESCRIPTION OF CHANGE		APP.	DATE
DRAFTER J.DERTING		DATE 1-09-04		DESCRIPTION LBL,TPC,SM/BT/WLAN/GPRS				
CHECKER		DATE						
ELEC. ENG		DATE		SIZE B		DWG. NO 26-0560-001		
MECH. ENG		DATE		SCALE 2.000		SHEET 1 OF 1		
MFG. ENG		DATE				REV 1		

