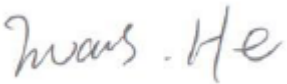
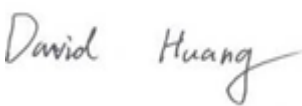



# EMC TEST REPORT



Report No.: 17070325-FCC-E

Supersede Report No: N/A

Applicant	G-TOUCH LLC.	
Product Name	Mobile phone	
Model No.	STELLA	
Serial No.	N/A	
Test Standard	FCC Part 15 Subpart B Class B:2016, ANSI C63.4: 2014	
Test Date	July 04 to July 11, 2017	
Issue Date	July 12, 2017	
Test Result	<input checked="" type="checkbox"/> Pass <input type="checkbox"/> Fail	
Equipment complied with the specification <input checked="" type="checkbox"/>		
Equipment did not comply with the specification <input type="checkbox"/>		
		
Evans He Test Engineer	David Huang Checked By	
This test report may be reproduced in full only Test result presented in this test report is applicable to the tested sample only		

Issued by:

**SIEMIC (SHENZHEN-CHINA) LABORATORIES**

Zone A, Floor 1, Building 2 Wan Ye Long Technology Park

South Side of Zhoushi Road, Bao' an District, Shenzhen, Guangdong China 518108

Phone: +86 0755 2601 4629801 Email: [China@siemic.com.cn](mailto:China@siemic.com.cn)

## Laboratories Introduction

SIEMIC, headquartered in the heart of Silicon Valley, with superior facilities in US and Asia, is one of the leading independent testing and certification facilities providing customers with one-stop shop services for Compliance Testing and Global Certifications.



In addition to testing and certification, SIEMIC provides initial design reviews and compliance management throughout a project. Our extensive experience with China, Asia Pacific, North America, European, and International compliance requirements, assures the fastest, most cost effective way to attain regulatory compliance for the global markets.

### Accreditations for Conformity Assessment

Country/Region	Scope
USA	EMC, RF/Wireless, SAR, Telecom
Canada	EMC, RF/Wireless, SAR, Telecom
Taiwan	EMC, RF, Telecom, SAR, Safety
Hong Kong	RF/Wireless, SAR, Telecom
Australia	EMC, RF, Telecom, SAR, Safety
Korea	EMI, EMS, RF, SAR, Telecom, Safety
Japan	EMI, RF/Wireless, SAR, Telecom
Singapore	EMC, RF, SAR, Telecom
Europe	EMC, RF, SAR, Telecom, Safety

Test Report	17070325-FCC-E
Page	3 of 38

This page has been left blank intentionally.

## CONTENTS

1. REPORT REVISION HISTORY .....	5
2. CUSTOMER INFORMATION.....	5
3. TEST SITE INFORMATION .....	5
4. EQUIPMENT UNDER TEST (EUT) INFORMATION .....	6
5. TEST SUMMARY .....	8
6. MEASUREMENTS, EXAMINATION AND DERIVED RESULTS.....	10
6.1 AC POWER LINE CONDUCTED EMISSIONS.....	10
6.2 RADIATED EMISSIONS.....	16
ANNEX A. TEST INSTRUMENT.....	21
ANNEX B. EUT AND TEST SETUP PHOTOGRAPHS.....	22
ANNEX C. TEST SETUP AND SUPPORTING EQUIPMENT.....	34
ANNEX D. USER MANUAL / BLOCK DIAGRAM / SCHEMATICS / PARTLIST .....	37
ANNEX E. DECLARATION OF SIMILARITY .....	38

## 1. Report Revision History

Report No.	Report Version	Description	Issue Date
17070325-FCC-E	NONE	Original	July 12, 2017

## 2. Customer information

Applicant Name	G-TOUCH LLC.
Applicant Add	1750 NW 107TH Avenue, STE P-411, Miami,Florida, United States
Manufacturer	G-TOUCH LLC.
Manufacturer Add	1750 NW 107TH Avenue, STE P-411, Miami,Florida, United States

## 3. Test site information

Lab performing tests	SIEMIC (Shenzhen-China) LABORATORIES
Lab Address	Zone A, Floor 1, Building 2 Wan Ye Long Technology Park South Side of Zhoushi Road, Bao' an District, Shenzhen, Guangdong China 518108
FCC Test Site No.	718246
IC Test Site No.	4842E-1
Test Software of Radiated Emission	Radiated Emission Program-To Shenzhen v2.0
Test Software of Conducted Emission	EZ-EMC(ver.lcp-03A1)

## 4. Equipment under Test (EUT) Information

Description of EUT:	Mobile phone
Main Model:	STELLA
Serial Model:	N/A
Antenna Gain:	GSM850: -3.62dBi PCS1900: -1.22dBi UMTS-FDD Band V: -3.66dBi UMTS-FDD Band II: -1.29dBi WIFI: 0.65dBi Bluetooth/BLE: 0.65dBi GPS: -0.85dBi
Antenna Type:	PIFA antenna
Input Power:	Adapter: Model: STELLA Input: AC100-240V~50/60Hz,0.15A Output: DC 5.0V,800mA Battery: Model: BT015100 Spec : 3.8V,2000mAh Voltage: 4.35V
Equipment Category :	JBP
Type of Modulation:	GSM / GPRS: GMSK EGPRS: GMSK UMTS-FDD: QPSK 802.11b/g/n: DSSS, OFDM Bluetooth: GFSK, $\pi$ /4DQPSK, 8DPSK BLE: GFSK GPS:BPSK
RF Operating Frequency (ies):	GSM850 TX: 824.2 ~ 848.8 MHz; RX: 869.2 ~ 893.8 MHz PCS1900 TX: 1850.2 ~ 1909.8 MHz; RX: 1930.2 ~ 1989.8 MHz

UMTS-FDD Band V TX: 826.4 ~ 846.6 MHz; RX: 871.4 ~ 891.6 MHz

UMTS-FDD Band II TX: 1852.4 ~ 1907.6 MHz;

RX: 1932.4 ~ 1987.6 MHz

WIFI: 802.11b/g/n(20M): 2412-2462 MHz

WIFI: 802.11n(40M): 2422-2452 MHz

Bluetooth & BLE: 2402-2480 MHz

GPS: 1575.42 MHz

GSM 850: 124CH

PCS1900: 299CH

UMTS-FDD Band V: 102CH

UMTS-FDD Band II: 277CH

Number of Channels:

WIFI :802.11b/g/n(20M): 11CH

WIFI :802.11n(40M): 7CH

Bluetooth: 79CH

BLE: 40CH

GPS: 1CH

Port:

USB Port, Earphone Port

Trade Name :

N/A

FCC ID:

2AJDZSTELLA

GPRS/ EGPRS Multi-slot class

8/10/12

Date EUT received:

July 03, 2017

Test Date(s):

July 04 to July 11, 2017

## 5. Test Summary

The product was tested in accordance with the following specifications.

All testing has been performed according to below product classification:

FCC Rules	Description of Test	Result
§15.107; ANSI C63.4: 2014	AC Power Line Conducted Emissions	Compliance
§15.109; ANSI C63.4: 2014	Radiated Emissions	Compliance



## Measurement Uncertainty


Parameter	Uncertainty
AC Power Line Conducted Emissions (150kHz~30MHz)	$\pm 3.11\text{dB}$
Radiated Emission(30MHz~1GHz)	$\pm 5.12\text{dB}$
Radiated Emission(1GHz~6GHz)	$\pm 5.34\text{dB}$

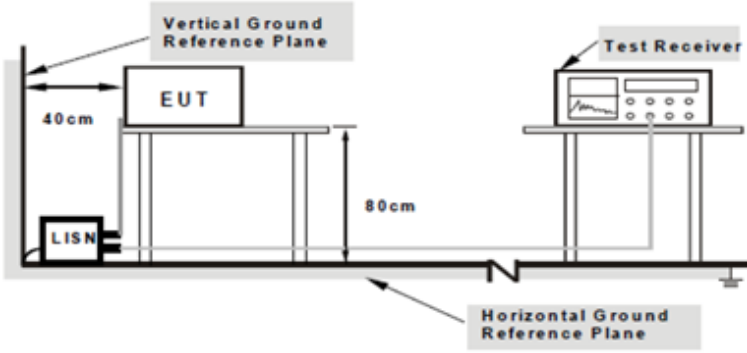
## 6. Measurements, Examination And Derived Results

### 6.1 AC Power Line Conducted Emissions

Temperature	25 °C
Relative Humidity	54%
Atmospheric Pressure	1010mbar
Test date :	July 06, 2017
Tested By :	Evans He

#### Requirement(s):

Spec	Item	Requirement	Applicable		
47CFR§15.107	a)	For Low-power radio-frequency devices that is designed to be connected to the public utility (AC) power line, the radio frequency voltage that is conducted back onto the AC power line on any frequency or frequencies, within the band 150 kHz to 30 MHz, shall not exceed the limits in the following table, as measured using a 50 [mu] H/50 ohms line impedance stabilization network (LISN). The lower limit applies at the boundary between the frequencies ranges.			
		Frequency ranges (MHz)		Limit (dBµV)	
				QP	Average
		0.15 ~ 0.5		66 – 56	56 – 46
		0.5 ~ 5		56	46
		5 ~ 30	60	50	

Test Setup	 <p>Note: 1.Support units were connected to second LISN. 2.Both of LISNs (AMN) are 80cm from EUT and at least 80cm from other units and other metal planes support units.</p>
------------	---

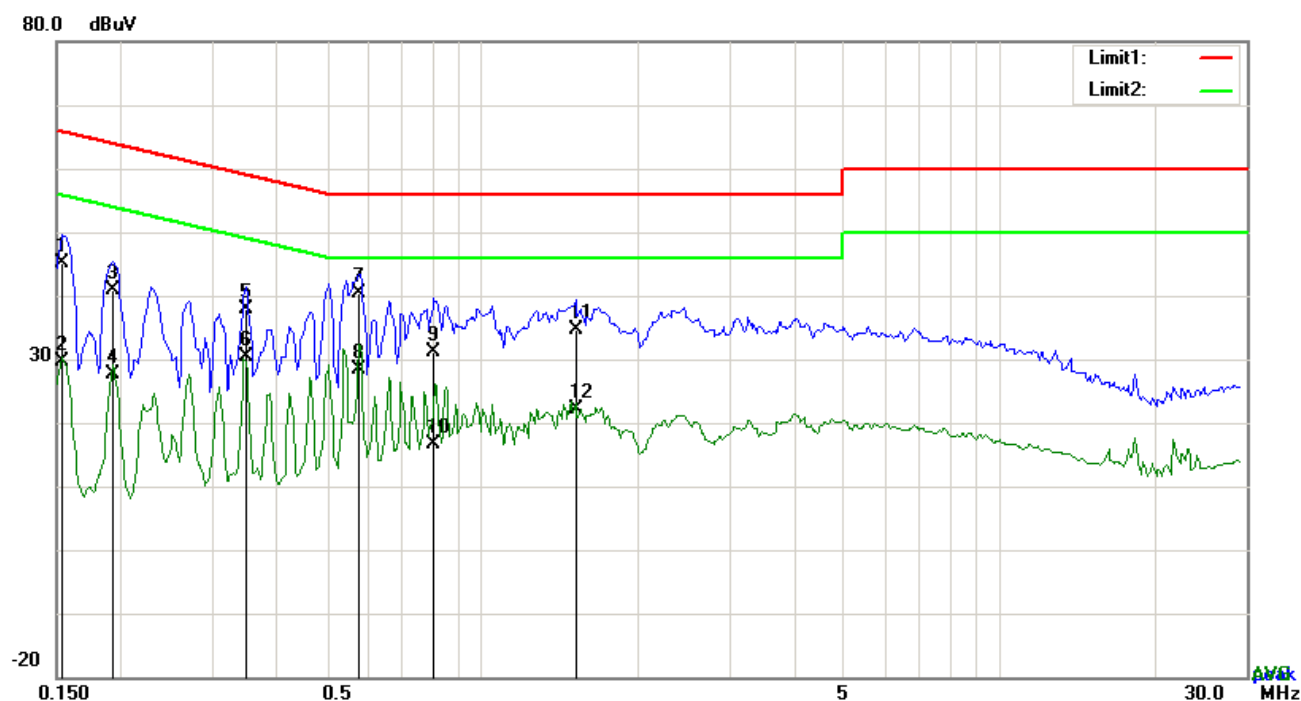
Procedure	<ol style="list-style-type: none"> <li>The EUT and supporting equipment were set up in accordance with the requirements of the standard on top of a 1.5m x 1m x 0.8m high, non-metallic table.</li> <li>The power supply for the EUT was fed through a 50Ω /50mH EUT LISN, connected to filtered mains.</li> </ol>
-----------	--

	<p>3. The RF OUT of the EUT LISN was connected to the EMI test receiver via a low-loss coaxial cable.</p> <p>4. All other supporting equipment were powered separately from another main supply.</p> <p>5. The EUT was switched on and allowed to warm up to its normal operating condition.</p> <p>6. A scan was made on the NEUTRAL line (for AC mains) or Earth line (for DC power) over the required frequency range using an EMI test receiver.</p> <p>7. High peaks, relative to the limit line, The EMI test receiver was then tuned to the selected frequencies and the necessary measurements made with a receiver bandwidth setting of 10 kHz.</p> <p>8. Step 7 was then repeated for the LIVE line (for AC mains) or DC line (for DC power).</p>
Remark	
Result	<input checked="" type="checkbox"/> Pass <input type="checkbox"/> Fail

Test Data ☒ Yes ☐ N/A

Test Plot ☒ Yes (See below) ☐ N/A

**Test Mode : USB Mode**

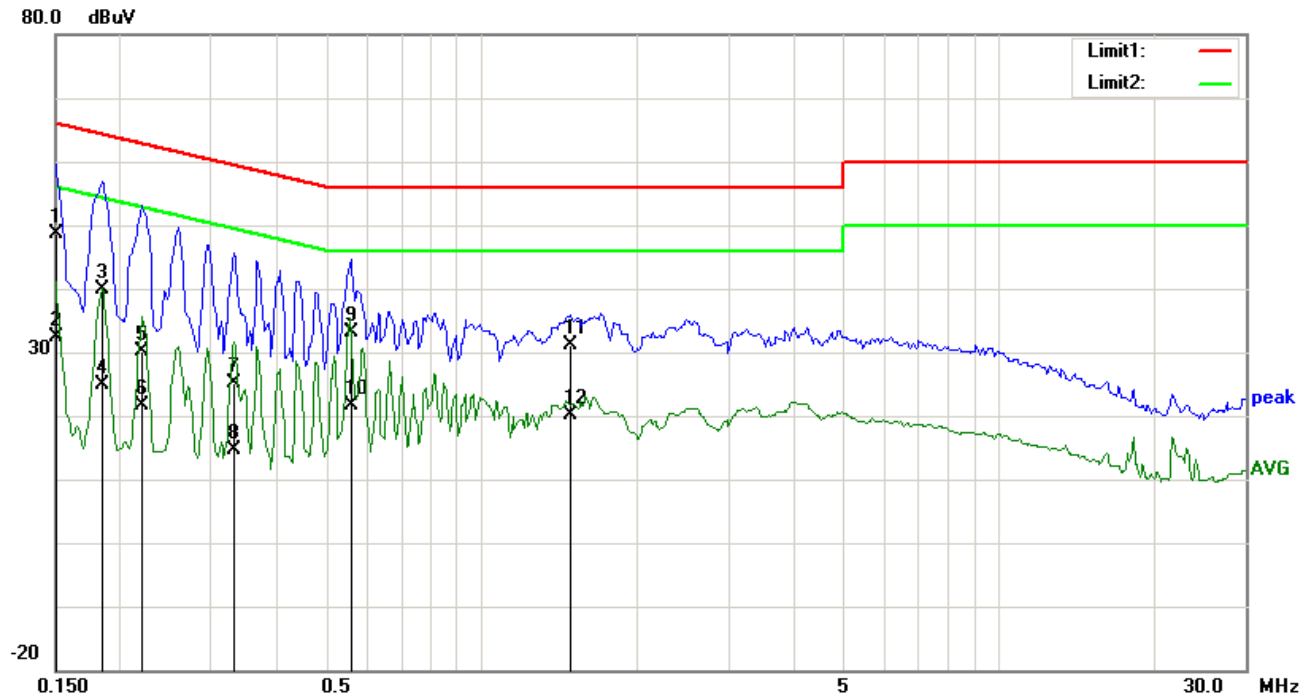


### Test Data

### Phase Line Plot at 120Vac, 60Hz

No.	P/L	Frequency	Reading	Detector	Corrected	Result	Limit	Margin
		(MHz)	(dBuV)		(dB)	(dBuV)	(dBuV)	(dB)
1	L1	0.1540	35.10	QP	10.03	45.13	65.78	-20.65
2	L1	0.1540	19.53	AVG	10.03	29.56	55.78	-26.22
3	L1	0.1929	30.86	QP	10.03	40.89	63.91	-23.02
4	L1	0.1929	17.55	AVG	10.03	27.58	53.91	-26.33
5	L1	0.3489	27.84	QP	10.03	37.87	58.99	-21.12
6	L1	0.3489	20.31	AVG	10.03	30.34	48.99	-18.65
7	L1	0.5790	30.23	QP	10.03	40.26	56.00	-15.74
8	L1	0.5790	18.35	AVG	10.03	28.38	46.00	-17.62
9	L1	0.8052	20.99	QP	10.03	31.02	56.00	-24.98
10	L1	0.8052	6.66	AVG	10.03	16.69	46.00	-29.31
11	L1	1.5150	24.59	QP	10.04	34.63	56.00	-21.37
12	L1	1.5150	12.19	AVG	10.04	22.23	46.00	-23.77

**Test Mode :** USB Mode

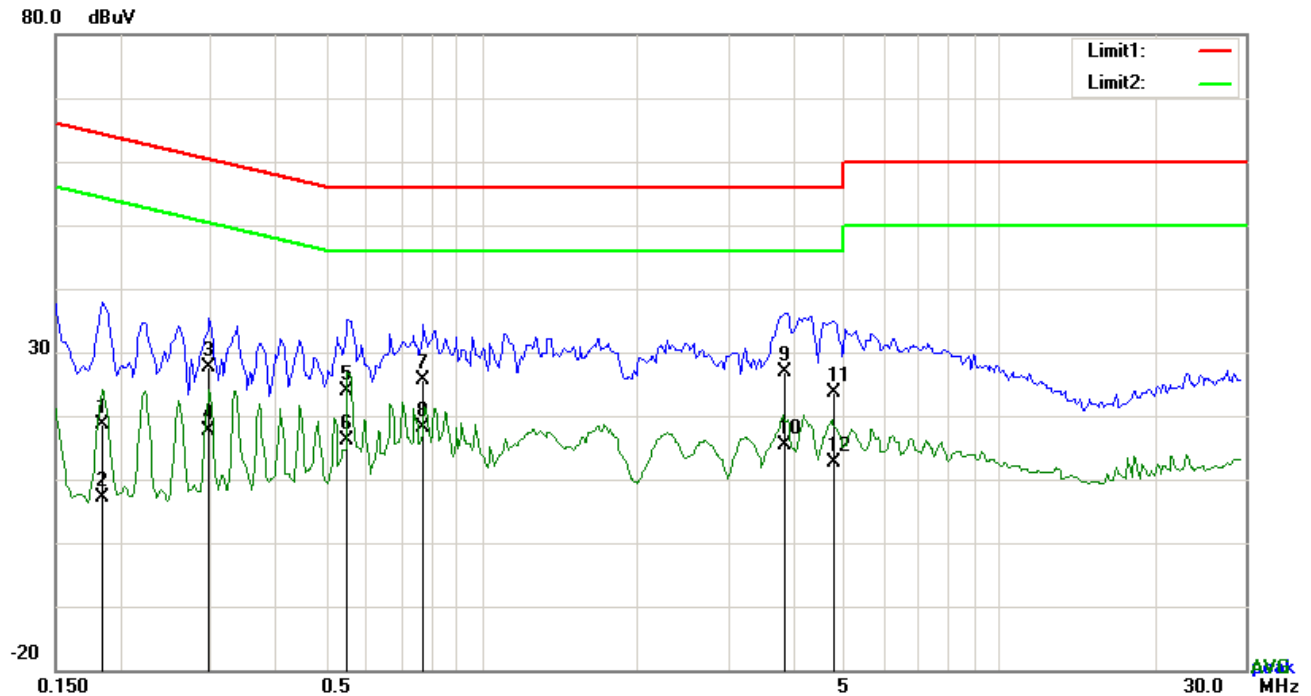


**Test Data**

**Phase Neutral Plot at 120Vac, 60Hz**

No.	P/L	Frequency	Reading	Detector	Corrected	Result	Limit	Margin
		(MHz)	(dBuV)		(dB)	(dBuV)	(dBuV)	(dB)
1	N	0.1500	38.65	QP	10.02	48.67	66.00	-17.33
2	N	0.1500	22.26	AVG	10.02	32.28	56.00	-23.72
3	N	0.1851	29.98	QP	10.02	40.00	64.25	-24.25
4	N	0.1851	14.91	AVG	10.02	24.93	54.25	-29.32
5	N	0.2202	20.22	QP	10.02	30.24	62.81	-32.57
6	N	0.2202	11.61	AVG	10.02	21.63	52.81	-31.18
7	N	0.3333	15.01	QP	10.02	25.03	59.37	-34.34
8	N	0.3333	4.54	AVG	10.02	14.56	49.37	-34.81
9	N	0.5595	23.01	QP	10.02	33.03	56.00	-22.97
10	N	0.5595	11.65	AVG	10.02	21.67	46.00	-24.33
11	N	1.4838	21.22	QP	10.03	31.25	56.00	-24.75
12	N	1.4838	10.18	AVG	10.03	20.21	46.00	-25.79

**Test Mode :** USB Mode

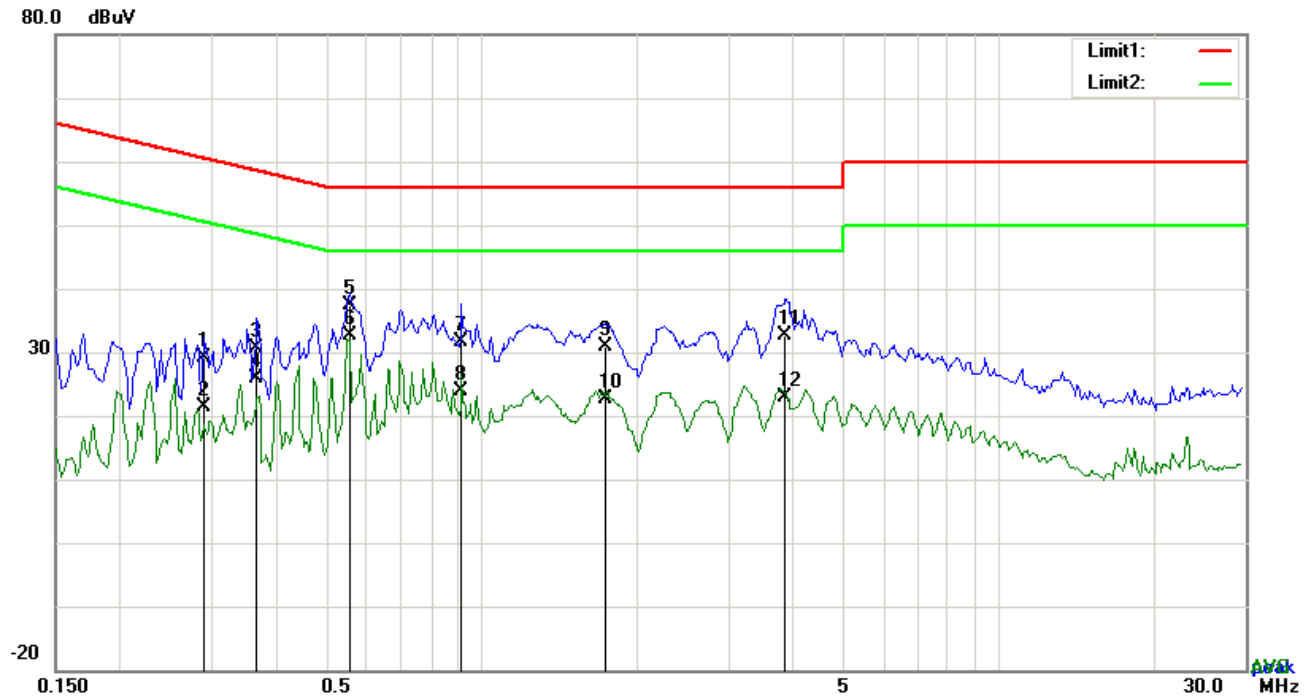


*Test Data*

**Phase Line Plot at 240Vac, 60Hz**

No.	P/L	Frequency	Reading	Detector	Corrected	Result	Limit	Margin
		(MHz)	(dBuV)		(dB}	(dBuV)	(dBuV)	(dB)
1	L1	0.1851	8.67	QP	10.03	18.70	64.25	-45.55
2	L1	0.1851	-2.85	AVG	10.03	7.18	54.25	-47.07
3	L1	0.2982	17.67	QP	10.03	27.70	60.29	-32.59
4	L1	0.2982	7.57	AVG	10.03	17.60	50.29	-32.69
5	L1	0.5517	13.91	QP	10.03	23.94	56.00	-32.06
6	L1	0.5517	5.99	AVG	10.03	16.02	46.00	-29.98
7	L1	0.7740	15.69	QP	10.03	25.72	56.00	-30.28
8	L1	0.7740	8.03	AVG	10.03	18.06	46.00	-27.94
9	L1	3.8541	16.73	QP	10.07	26.80	56.00	-29.20
10	L1	3.8541	5.32	AVG	10.07	15.39	46.00	-30.61
11	L1	4.7979	13.58	QP	10.08	23.66	56.00	-32.34
12	L1	4.7979	2.47	AVG	10.08	12.55	46.00	-33.45

**Test Mode :** USB Mode



**Test Data**


**Phase Neutral Plot at 240Vac, 60Hz**

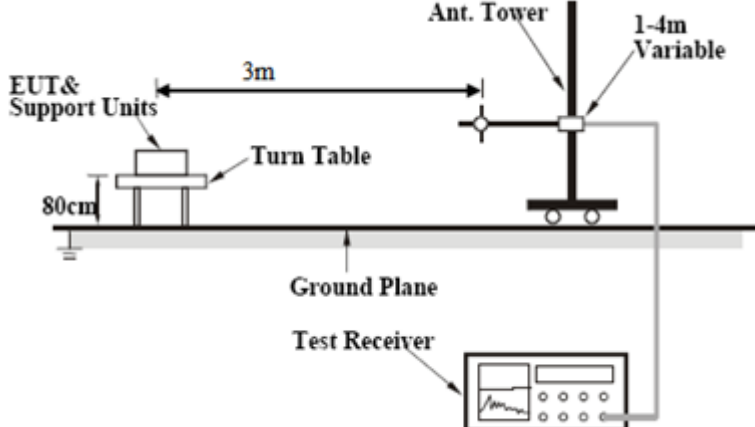
No.	P/L	Frequency	Reading	Detector	Corrected	Result	Limit	Margin
		(MHz)	(dBuV)		(dB}	(dBuV)	(dBuV)	(dB)
1	N	0.2904	19.05	QP	10.02	29.07	60.51	-31.44
2	N	0.2904	11.28	AVG	10.02	21.30	50.51	-29.21
3	N	0.3684	20.53	QP	10.02	30.55	58.54	-27.99
4	N	0.3684	15.83	AVG	10.02	25.85	48.54	-22.69
5	N	0.5556	27.31	QP	10.02	37.33	56.00	-18.67
6	N	0.5556	22.71	AVG	10.02	32.73	46.00	-13.27
7	N	0.9183	21.68	QP	10.03	31.71	56.00	-24.29
8	N	0.9183	13.90	AVG	10.03	23.93	46.00	-22.07
9	N	1.7373	20.92	QP	10.04	30.96	56.00	-25.04
10	N	1.7373	12.51	AVG	10.04	22.55	46.00	-23.45
11	N	3.8736	22.61	QP	10.06	32.67	56.00	-23.33
12	N	3.8736	12.80	AVG	10.06	22.86	46.00	-23.14

## 6.2 Radiated Emissions

Temperature	25 °C
Relative Humidity	55%
Atmospheric Pressure	1012mbar
Test date :	July 10, 2017
Tested By :	Evans He

### Requirement(s):

Spec	Item	Requirement	Applicable	
47CFR§15.109(d)	a)	Except higher limit as specified elsewhere in other section, the emissions from the low-power radio-frequency devices shall not exceed the field strength levels specified in the following table and the level of any unwanted emissions shall not exceed the level of the fundamental emission. The tighter limit applies at the band edges		
		Frequency range (MHz)		Field Strength (µV/m)
		30 – 88		100
		88 – 216		150
		216 960		200
		Above 960		500

Test Setup	
------------	--

Procedure	<ol style="list-style-type: none"> <li>The EUT was switched on and allowed to warm up to its normal operating condition.</li> <li>The test was carried out at the selected frequency points obtained from the EUT characterization. Maximization of the emissions, was carried out by rotating the EUT, changing the antenna polarization, and adjusting the antenna height in the following manner: <ol style="list-style-type: none"> <li>Vertical or horizontal polarization (whichever gave the higher emission level</li> </ol> </li> </ol>
-----------	--



	<p>over a full rotation of the EUT) was chosen.</p> <p>b. The EUT was then rotated to the direction that gave the maximum emission.</p> <p>c. Finally, the antenna height was adjusted to the height that gave the maximum emission.</p> <p>3. The resolution bandwidth and video bandwidth of test receiver/spectrum analyzer is 120 kHz for Quasi Peak detection at frequency below 1GHz.</p> <p>4. The resolution bandwidth of test receiver/spectrum analyzer is 1MHz and video bandwidth is 3MHz with Peak detection for Peak measurement at frequency above 1GHz. The resolution bandwidth of test receiver/spectrum analyzer is 1MHz and the video bandwidth with Peak detection for Average Measurement as below at frequency above 1GHz. ■ 1 kHz (Duty cycle &lt; 98%) □ 10 Hz (Duty cycle &gt; 98%)</p> <p>5. Steps 2 and 3 were repeated for the next frequency point, until all selected frequency points were measured.</p>
Remark	
Result	<input checked="" type="checkbox"/> Pass <input type="checkbox"/> Fail

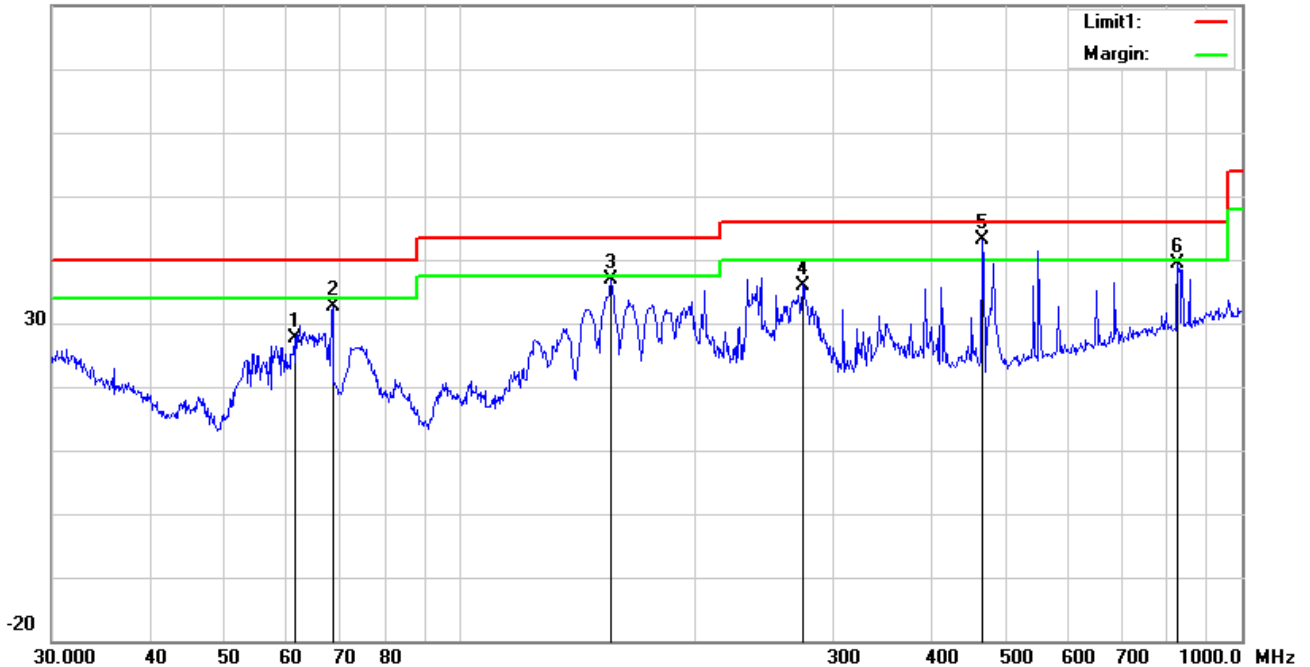
Test Data ☒ Yes ☐ N/A

Test Plot ☒ Yes (See below) ☐ N/A

Test Mode : USB Mode

**Below 1GHz**

80.0 dBuV/m

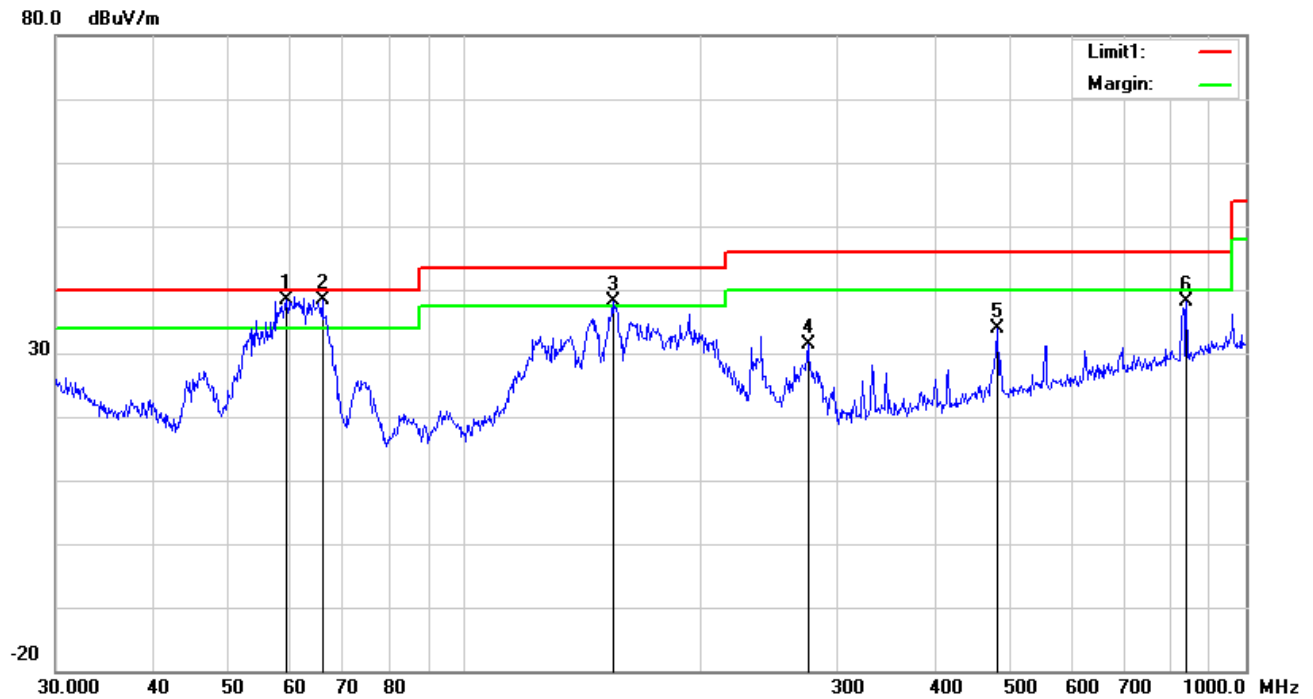


**Test Data**

**Horizontal Polarity Plot @3m**

No.	P/L	Frequency (MHz)	Reading (dBuV/m)	Detector	Ant_F (dB/m)	PA_G (dB)	Cab_L (dB)	Result (dBuV/m)	Limit (dBuV/m)	Margin (dB)	Height (cm)	Degree (°)
1	H	61.3463	41.91	peak	7.37	22.41	0.79	27.66	40.00	-12.34	100	39
2	H	68.6310	46.40	peak	7.73	22.38	0.95	32.70	40.00	-7.30	100	98
3	H	155.9101	45.11	peak	12.60	22.30	1.37	36.78	43.50	-6.72	100	168
4	H	274.1939	44.09	peak	12.46	22.29	1.74	36.00	46.00	-10.00	100	202
5	H	465.5994	45.67	QP	17.01	21.88	2.22	43.02	46.00	-2.98	100	153
6	H	827.4934	35.76	peak	21.70	21.08	2.91	39.29	46.00	-6.71	100	347

## Below 1GHz



## Test Data

### Vertical Polarity Plot @3m

No.	P/L	Frequency	Reading	Detector	Ant_F	PA_G	Cab_L	Result	Limit	Margin	Height	Degree
		(MHz)	(dBuV/m)		(dB/m)	(dB)	(dB)	(dBuV/m)	(dBuV/m)	(dB)	(cm)	(°)
1	V	59.2325	52.66	QP	7.38	22.41	0.75	38.38	40.00	-1.62	100	168
2	V	65.8031	52.40	QP	7.59	22.39	0.90	38.50	40.00	-1.50	100	251
3	V	154.8205	46.48	QP	12.60	22.31	1.36	38.13	43.50	-5.37	100	114
4	V	275.1570	39.35	peak	12.51	22.29	1.75	31.32	46.00	-14.68	100	239
5	V	480.5276	36.09	peak	17.31	21.85	2.31	33.86	46.00	-12.14	100	349
6	V	839.1818	34.57	peak	21.83	21.04	2.89	38.25	46.00	-7.75	100	329

### *Above 1GHz*

Frequency (MHz)	Read_level (dBμV/m)	Azimuth	Height (cm)	Polarity (H/V)	Factors (dB)	Level (dBμV/m)	Limit (dBμV/m)	Margin (dB)	Detector (PK/AV)
1456.2	61.03	147	100	V	-18.72	42.31	74	-31.69	PK
1675.8	67.19	135	100	V	-17.51	49.68	74	-24.32	PK
2219.4	55.6	92	100	V	-14.35	41.25	74	-32.75	PK
1469.7	66.34	105	100	H	-18.73	47.61	74	-26.39	PK
2135.5	65.07	246	100	H	-14.71	50.36	74	-23.64	PK
2358.7	63.82	302	100	H	-13.97	49.85	74	-24.15	PK

*Note1: The highest frequency of the EUT is 2480 MHz, so the testing has been conformed to  $5 \times 2480 \text{ MHz} = 12,400 \text{ MHz}$ .*

*Note2: The frequency that above 3GHz is mainly from the environment noise.*

*Note3: The AV measurement performed, more than 20dB below limit so AV test data was not presented.*

## Annex A. TEST INSTRUMENT

Instrument	Model	Serial #	Cal Date	Cal Due	In use
<b>AC Line Conducted Emissions</b>					
EMI test receiver	ESCS30	8471241027	09/16/2016	09/15/2017	<input checked="" type="checkbox"/>
Line Impedance Stabilization Network	LI-125A	191106	09/24/2016	09/23/2017	<input checked="" type="checkbox"/>
Line Impedance Stabilization Network	LI-125A	191107	09/24/2016	09/23/2017	<input checked="" type="checkbox"/>
ISN	ISN T800	34373	09/24/2016	09/23/2017	<input type="checkbox"/>
Transient Limiter	LIT-153	531118	08/31/2016	08/30/2017	<input checked="" type="checkbox"/>
<b>Radiated Emissions</b>					
EMI test receiver	ESL6	100262	09/16/2016	09/15/2017	<input checked="" type="checkbox"/>
OPT 010 AMPLIFIER (0.1-1300MHz)	8447E	2727A02430	08/31/2016	08/30/2017	<input checked="" type="checkbox"/>
Microwave Preamplifier (1 ~ 26.5GHz)	8449B	3008A02402	03/23/2017	03/22/2018	<input checked="" type="checkbox"/>
Bilog Antenna (30MHz~6GHz)	JB6	A110712	09/20/2016	09/19/2017	<input checked="" type="checkbox"/>
Double Ridge Horn Antenna	AH-118	71259	09/23/2016	09/22/2017	<input checked="" type="checkbox"/>

## Annex B. EUT And Test Setup Photographs

### Annex B.i. Photograph: EUT External Photo

Whole Package View



Adapter - Front View





EUT - Front View



EUT - Rear View



EUT - Top View



EUT - Bottom View

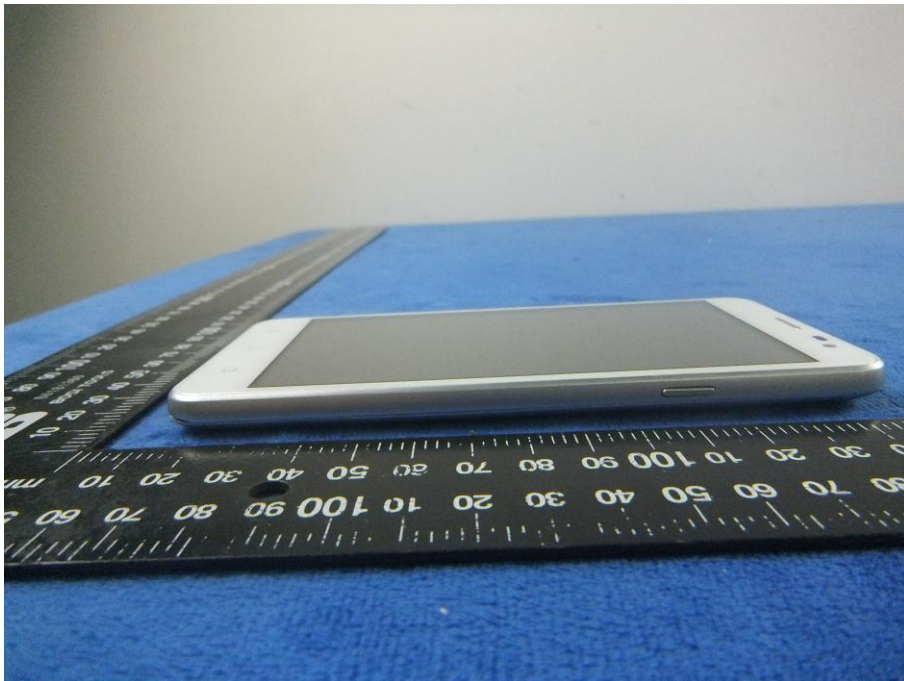




EUT - Left View



EUT - Right View



**Annex B.ii. Photograph: EUT Internal Photo**

Cover Off - Top View 1



Cover Off - Top View 2





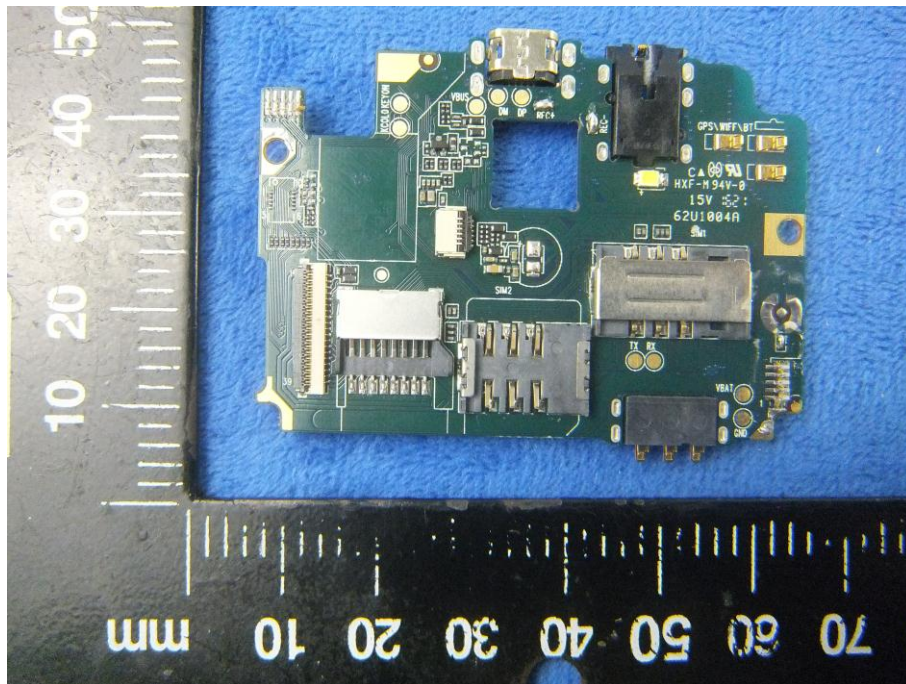
Battery - Front View



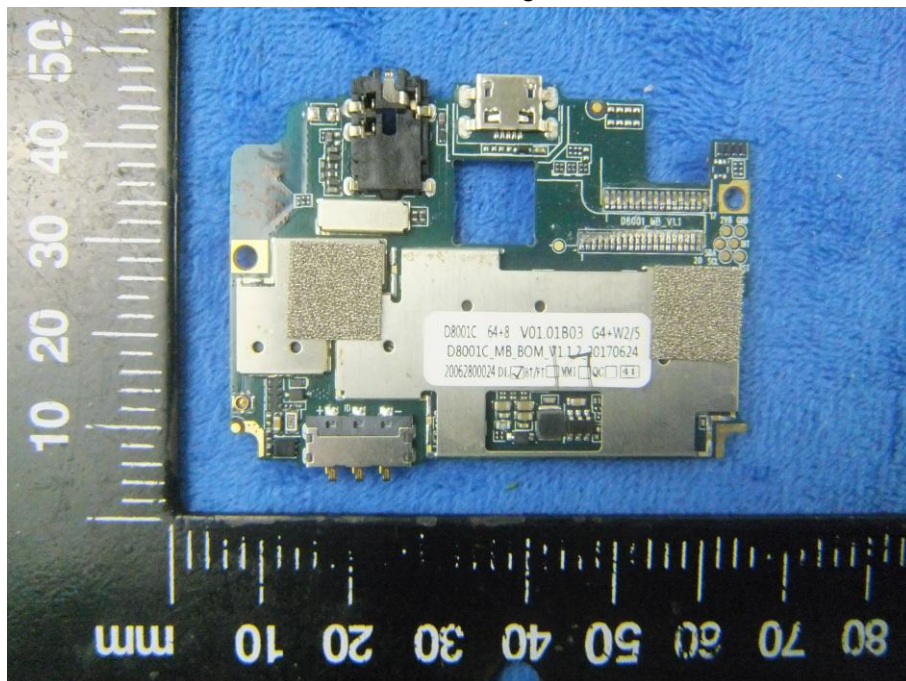
Battery - Rear View



Mainboard with Shielding - Front View

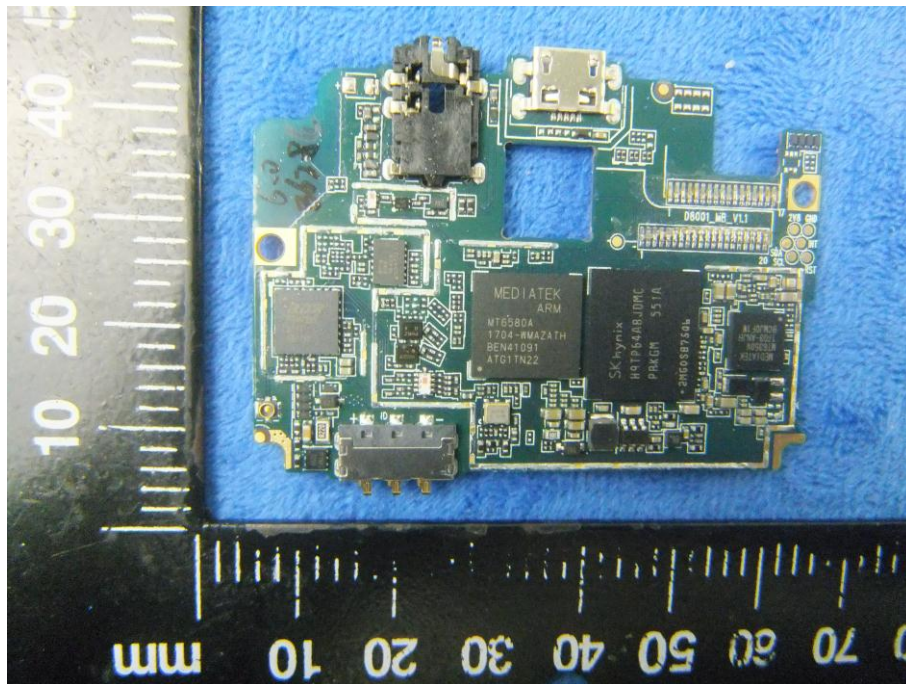


Mainboard with Shielding - Rear View

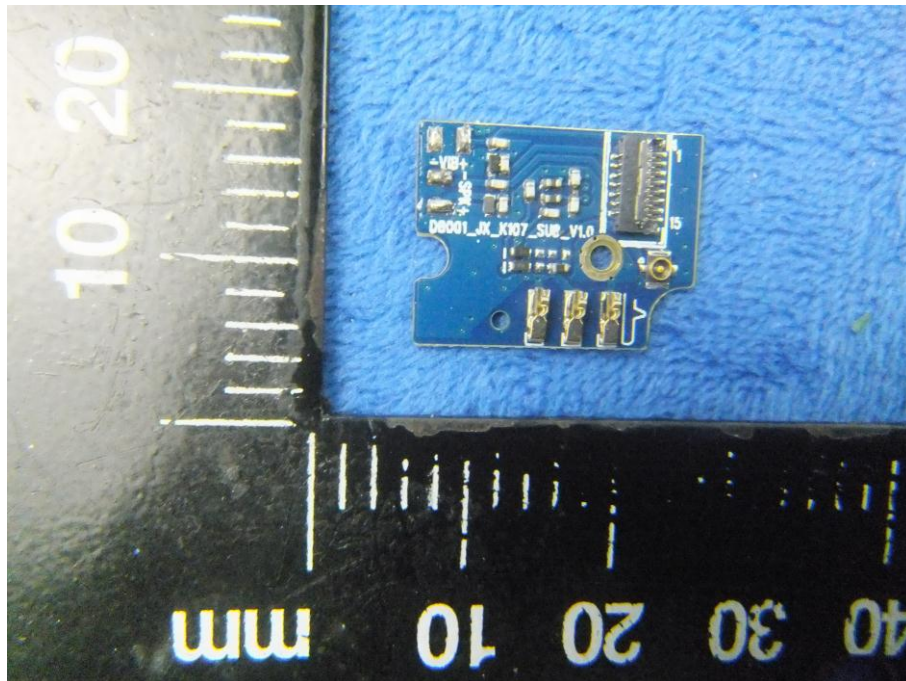




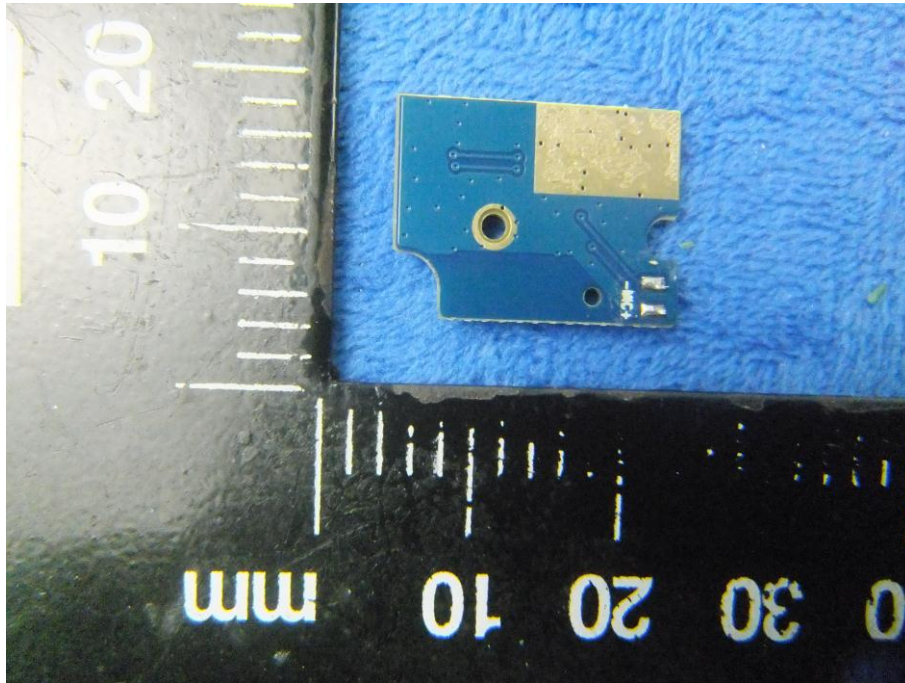
Mainboard without Shielding - Front View



Small Mainboard - Front View



Small Mainboard - Rear View

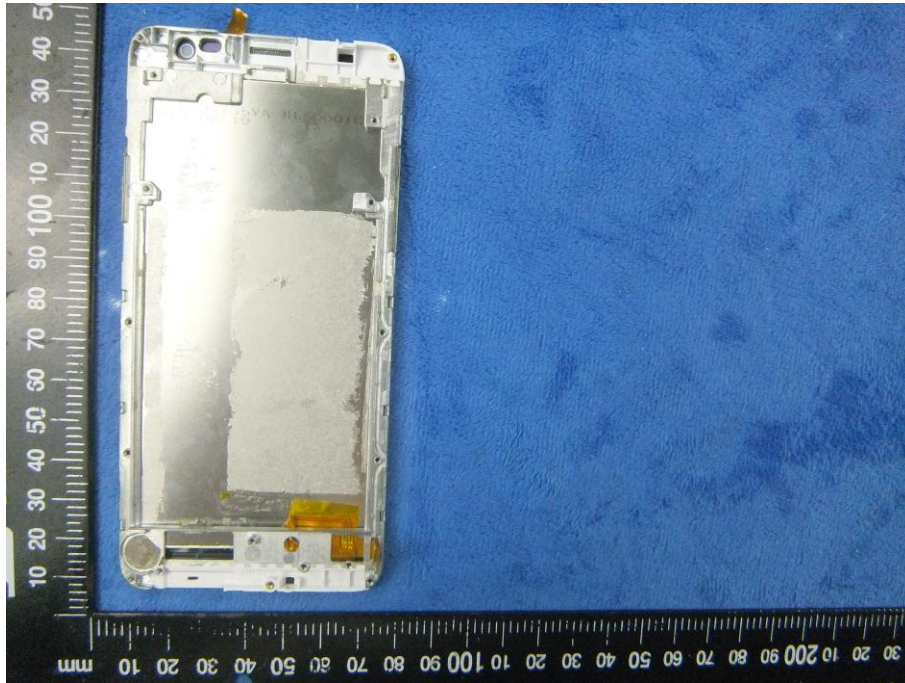


LCD - Front View





LCD – Rear View



GSM/PCS/UMTS - Antenna View



BT/WIFI - Antenna View

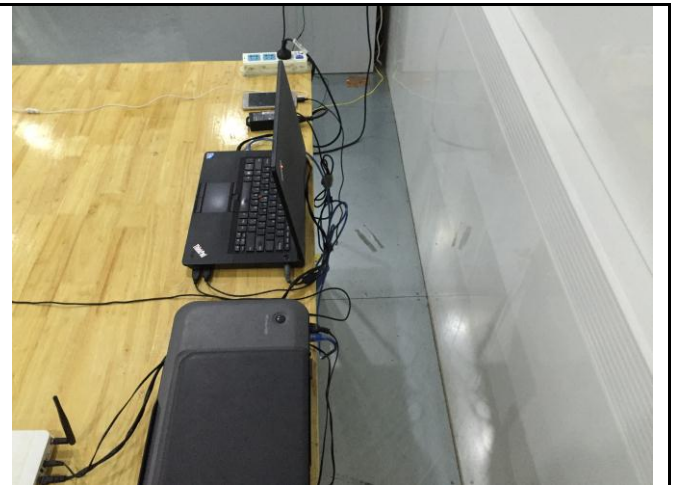




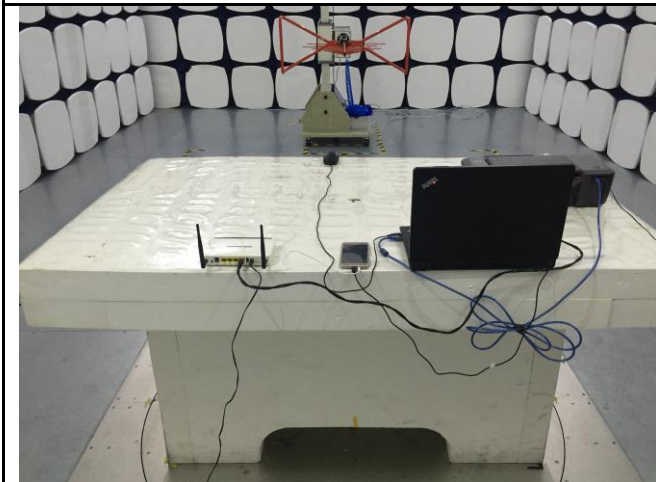
**Annex B.iii. Photograph: Test Setup Photo**



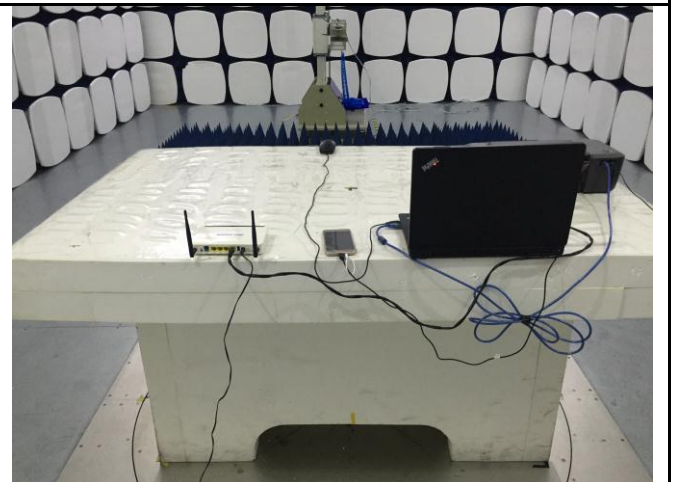
Conducted Emissions Test Setup – Front View



Conducted Emissions Test Setup – Side View



Radiated Emissions Test Setup Below 1GHz

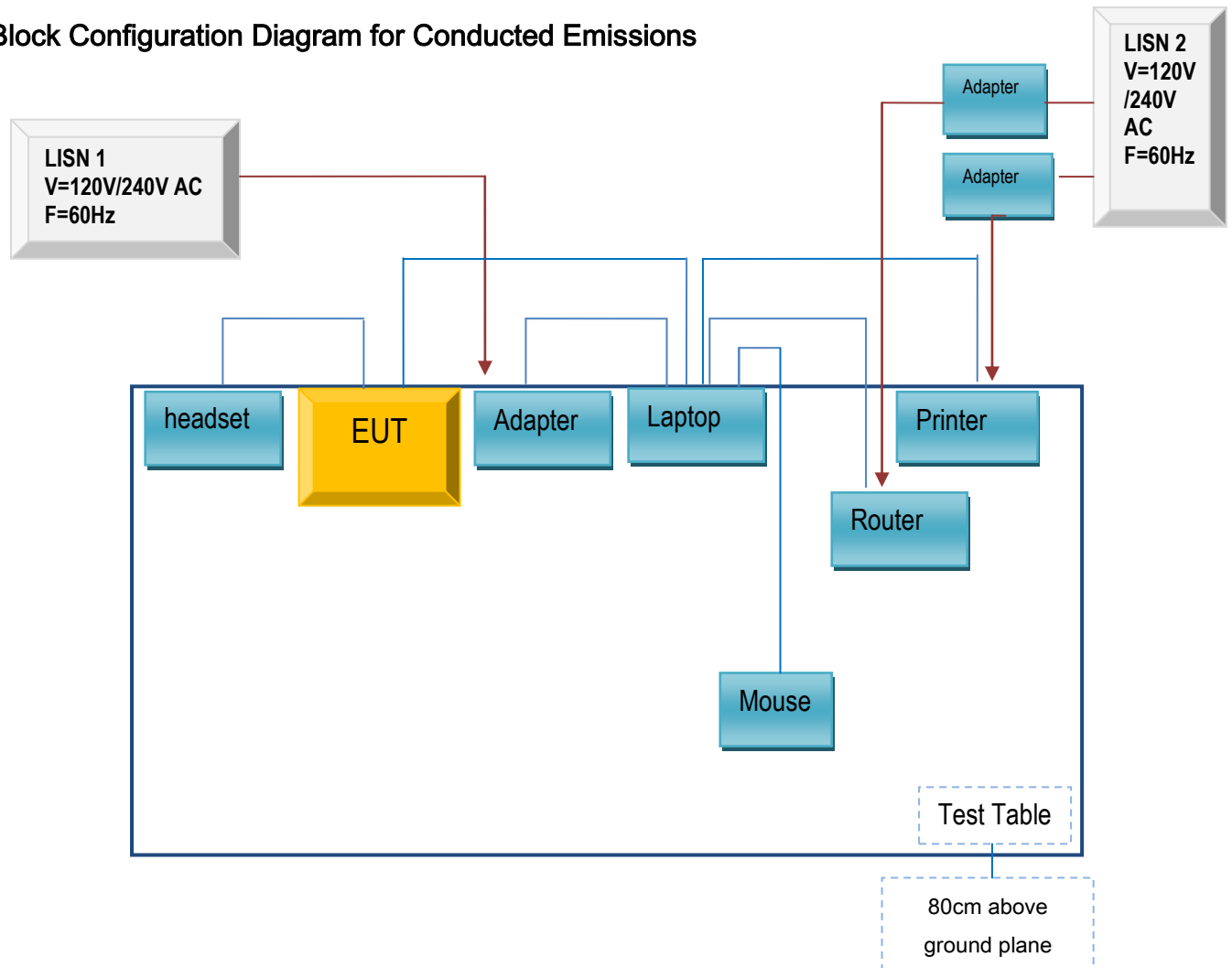


Radiated Emissions Test Setup Above 1GHz

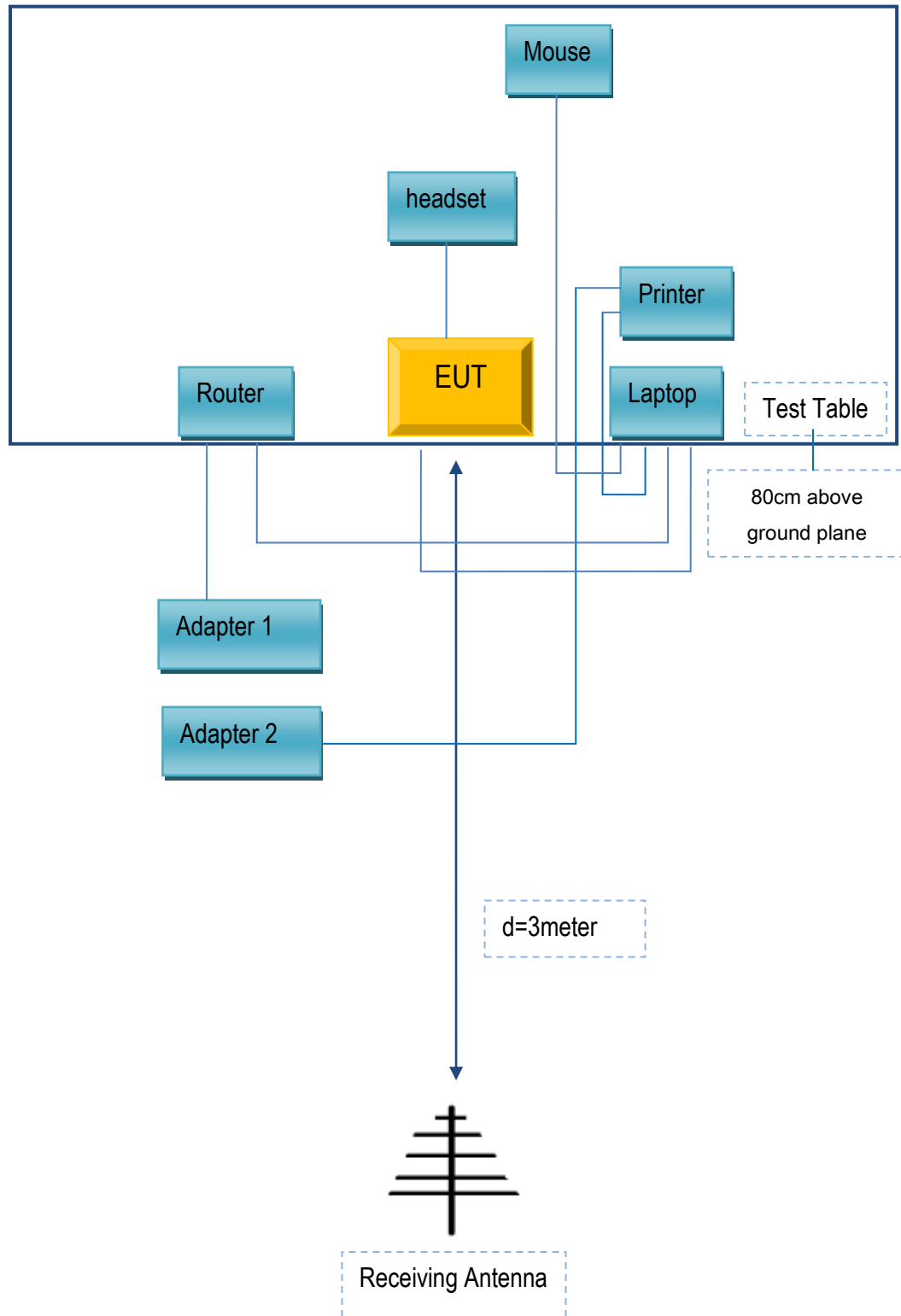
## Annex C. TEST SETUP AND SUPPORTING EQUIPMENT

### Annex C.ii. TEST SET UP BLOCK

#### Block Configuration Diagram for Conducted Emissions



## Block Configuration Diagram for Radiated Emissions



## **Annex C. ii. SUPPORTING EQUIPMENT DESCRIPTION**

The following is a description of supporting equipment and details of cables used with the EUT.

### **Supporting Equipment:**

Manufacturer	Equipment Description	Model	Serial No
Lenovo	Laptop	E40	LR-1EHRX
GOLDWEB	Router	R102	1202032094
Lenovo	AC Adapter	42T4416	21D9JU
HP	Printer	VCVRA-1003	CN36M19JWX
DELL	Mouse	E100	912NMTUT41481
BULL	Socket	GN-403	GN201203
G-TOUCH LLC.	Headset	STELLA	N/A

### **Supporting Cable:**

Cable type	Shield Type	Ferrite Core	Length	Serial No
USB Cable	Un-shielding	No	2m	JX120051274
USB Cable	Un-shielding	No	0.8m	CBA3000AH0C1
RJ45 Cable	Un-shielding	No	2m	KX156327541
Router Power cable	Un-shielding	No	2m	13274630Z
Printer Power cable	Un-shielding	No	2m	127581031
Power Cable	Un-shielding	No	0.8m	GT211032

## Annex D. User Manual / Block Diagram / Schematics / Partlist

Please see the attachment

## Annex E. DECLARATION OF SIMILARITY

N/A