

# H61F2英文说明书

版本：1.0

料号：807-0003-01091

成型尺寸：75×105mm

材质：80G书页纸

工艺：单色印刷

折叠方式：骑马订

页数：16页





# User Manual

Model: H61F2

Govee Strip Light 2 Pro



# Safety Instructions

Read and follow the safety instructions below:

- This product is for indoor use only.
- Avoid dropping the product from high places.
- Do not significantly modify the product.
- Do not leave children unattended with the product.
- Use the product with the provided power adapter only.
- When bending the strip light during installation or fixing the clip, please do not bend the strip light too tightly, as doing so may damage the light beads and affect the product's lifespan.
- After fixing the clip, please wait for a short period of time before installing the strip light, to allow for the clip to achieve maximum adhesion.

**CAUTION-**The product is not a toy.

Children and the disabled should use it under adult supervision.

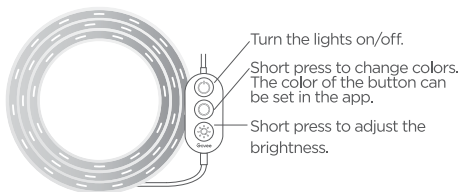
# Introduction

Thank you for choosing Govee Strip Light 2 Pro! With 5-in-1 lamp beads and Govee's own 5 Pins IC chip, Govee Strip Light 2 Pro is able to achieve fantastic, realistic color reproduction, and with support for RGBWWIC light technology, Matter, and smart voice control systems such as Alexa and Google Assistant, experience precise control of the amazingly vibrant light right from your phone or using your voice. Get ready to upgrade your home lighting like never before.

## What You Get

Strip Light	1
Power Adapter	1
User Manual	1

# Control Box Function Description



## Installing Your Strip Light

### Before You Install

1. Unpack the box and check all items listed in the packing list.
2. Power on the strip light and check that it properly lights up.

**Caution:** Unfurl the strip light before powering on.

When cutting, disconnect the strip light from power, find the cutting position on the front of the strip, and make the cut. Once complete, power it back on and calibrate the new strip length in the app.



## Installing Steps

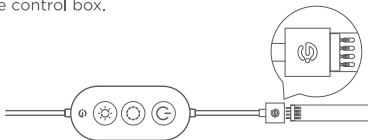
1. Clean the wall surface of dust and debris.



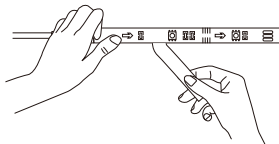
2. Estimate the positions of the control box and the power socket and make sure the strip light is long enough. Peel off the cover of the adhesive on the back of the control box and stick it to the wall surface. For a more convenient installation for this step, do not yet connect the control box with the power adapter.



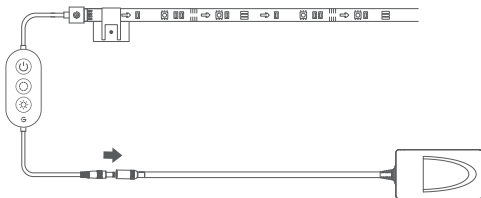
3. Please ensure the strip light is firmly connected with the control box.



3. Peel off the cover of the adhesive on the back of the strip light. Stick the strip light onto the wall surface and press hard to make sure it is firmly mounted.



4. Connect the adapter with the control box and plug the adapter into the power socket.





# Pairing Your Device with Govee Home App

## What You Need

- A Wi-Fi router supporting the 2.4GHz and 802.11 b/g/n bands. 5GHz is not supported.

## Pairing Instructions

1. Download Govee Home App from the App Store (iOS) or Google Play (Android). Log in with your account. New users need to create an account.
2. Turn on your smartphone's Bluetooth.
3. Open the app, tap the "+" icon in the top right corner and search "H61F2".
4. Tap the device icon and follow the on-screen instructions to complete pairing.



# Matter Guide

## Cautions:

1. You will need to complete the network connection of apps that support Matter (e.g. Google Home/Apple HomeKit, etc.) within 15 minutes after the product is powered on when using Matter for the first time.
2. An IPv6 network is required.
3. Changing the network may cause Matter to malfunction.
4. If the product cannot connect to the app, first restore the product to factory settings by short pressing the middle button on the control box 4 times while pressing and holding down the power button. After restoring, try connecting again.

## Step 1

Find the Matter QR code or device number on the product or on the “Device Settings” page in Govee Home App.

## Step 2

Turn on Bluetooth on your smartphone.

## Step 3

Download and open an app that supports Matter like Google Home, Apple HomeKit, etc.

## Step 4

Use the device number or QR code located on the product or in the app to complete the network connection for the product for Matter.

# Specifications

Model	H61F2
Adapter Input	AC 100-240V (US Plug) AC 200-240V (EU&BS Plug)
Light Input	24VDC 1.5A
Light Displaying echnology	RGBWWIC
Length	2m/6.56ft
Control Methods	Govee Home App, Voice Control

# Troubleshooting

## 1. Cannot connect to Govee Home App.

- Check if the device is powered on.
- Check if the smartphone's Bluetooth is enabled, or try connecting to another smartphone.
- When connecting for the first time, make sure the smartphone is near the device.
- If a connection error still exists, delete the connected device from the "Device" page on the app.
- Reconnect to Govee Home App by following the previously provided instructions.

## 2. The strip light does not work or is malfunctioning:

- Check if the adapter used is the one provided.
- Power the strip light off then on. Make sure the adapter and the control box have been powered on.
- Long press and hold the power button on the control box and quickly press the middle button four times to restore to factory settings.

## 3. The strip light does not fully display the selected color, or some part isn't lighting up:

- Please contact the Govee Support Team.

# Customer Service



Warranty: 12-Month Limited Warranty



Support: Lifetime Technical Support



Email: [support@govee.com](mailto:support@govee.com)



Official Website: [www.govee.com](http://www.govee.com)



@Govee



@govee\_official



@govee.official



@Goveeofficial



@Govee.smarthome

# FCC and ISED Canada Statement

This device complies with Part 15 of the FCC Rules and Innovation, Science and Economic Development Canada licence-exempt RSS standard(s). Operation is subject to the following two conditions:

(1) This device may not cause harmful interference, and (2) This device must accept any interference received, including interference that may cause undesired operation.

Warning: Changes or modifications not expressly approved by the party responsible for compliance could void the user's authority to operate the equipment.

Le présent appareil est conforme aux CNR d'Industrie Canada applicables aux appareils radio exempts de licence.

L'exploitation est autorisée aux deux conditions suivantes :

(1) l'appareil ne doit pas produire de brouillage, et  
(2) l'utilisateur de l'appareil doit accepter tout brouillage radioélectrique subi, même si le brouillage est susceptible d'en compromettre le fonctionnement.

**NOTE:** This equipment has been tested and found to comply with the limits for a Class B digital device, pursuant to Part 15 of the FCC Rules.

These limits are designed to provide reasonable protection against harmful interference in a residential installation. This equipment generates uses and can radiate radio frequency energy and, if not installed and used in accordance with the instructions, may cause harmful interference to radio communications. However, there is no guarantee that interference will not occur in a particular installation. If this equipment does cause harmful interference to radio or television reception, which can be determined by turning the equipment off and on, the user is encouraged to try to correct the interference by one or more of the following measures:

- 1.Reorient or relocate the receiving antenna.
- 2.Increase the separation between the equipment and receiver.
- 3.Connect the equipment into an outlet on a circuit different from that to which the receiver is connected.
- 4.Consult the dealer or an experienced radio/TV technician for help.

This Class B digital apparatus complies with Canadian ICES-005.

Cet appareil numérique de la classe B est conforme à la norme NMB-005 du Canada.

## **FCC and IC Radiation Exposure Statement**

This equipment complies with FCC and IC radiation exposure limits set forth for an uncontrolled environment. This equipment should be installed and operated with minimum distance 20cm between the radiator & your body.

Lors de l'utilisation du produit, maintenez une distance de 20 cm du corps afin de vous conformer aux exigences en matière d'exposition RF.

**Responsible party (this contact information is only for FCC matters) :**

Name: GOVEE MOMENTS(US) TRADING LIMITED

Address: 2501 Chatham Rd Suite R Springfield IL 62704

Email: certification@govee.com

Contact information: <https://www.govee.com/support>

The trademark Govee have been authorised to Shenzhen Qianyan Technology LTD.

Copyright ©2021 Shenzhen Qianyan Technology LTD.

All Rights Reserved.



FOR INDOOR USE ONLY

The Bluetooth® word mark and logos are registered trademarks owned by Bluetooth SIG, Inc. and any use of such marks by Shenzhen Qianyan Technology LTD is under license.





Govee Home App

For FAQs and more information,  
please visit: [www.govee.com](http://www.govee.com)