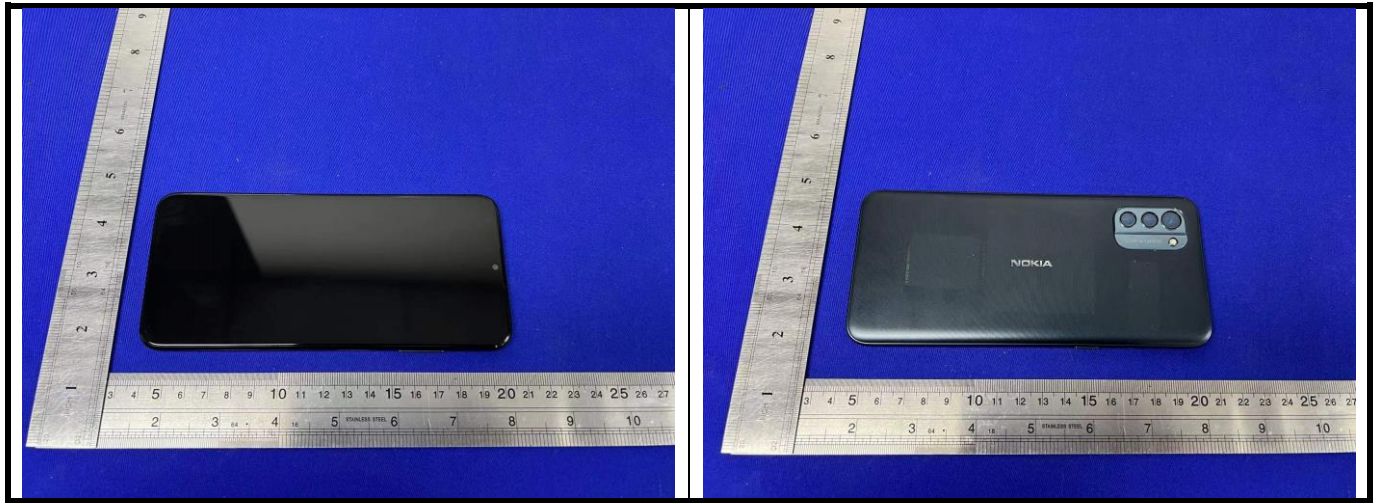
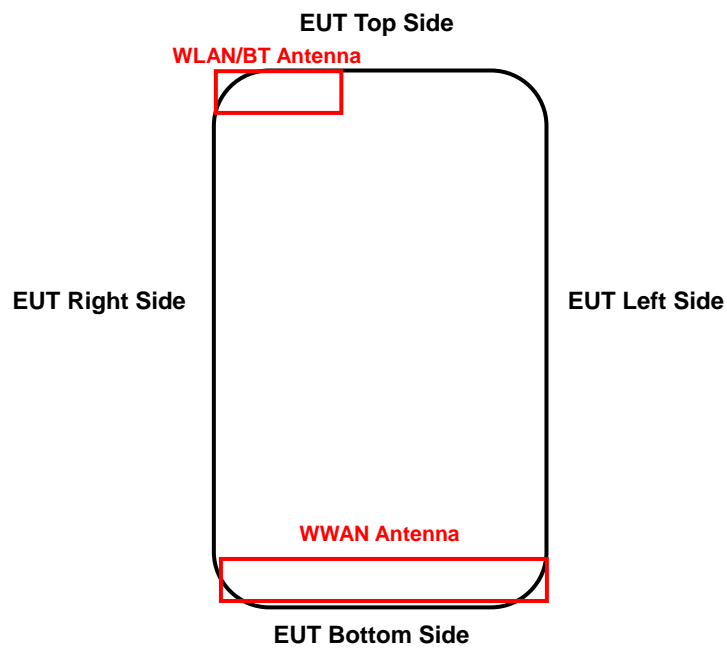


# FCC SAR Test Report

## <Photographs of EUT>



## <Antenna Location>



## <EUT Back View>

The separation distance for antenna to edge:

Antenna	Overall diagonal(mm)	Display diagonal(mm)	To Left Side (mm)	To Right Side (mm)	To Top Side (mm)	To Bottom Side (mm)
WWAN	174	162	0	0	154	0
WLAN/BT			50	0	0	152

## FCC SAR Test Report

### <Photographs of SAR Setup>



**Right Cheek**



**Left Cheek**



**Right Tilted**



**Left Tilted**

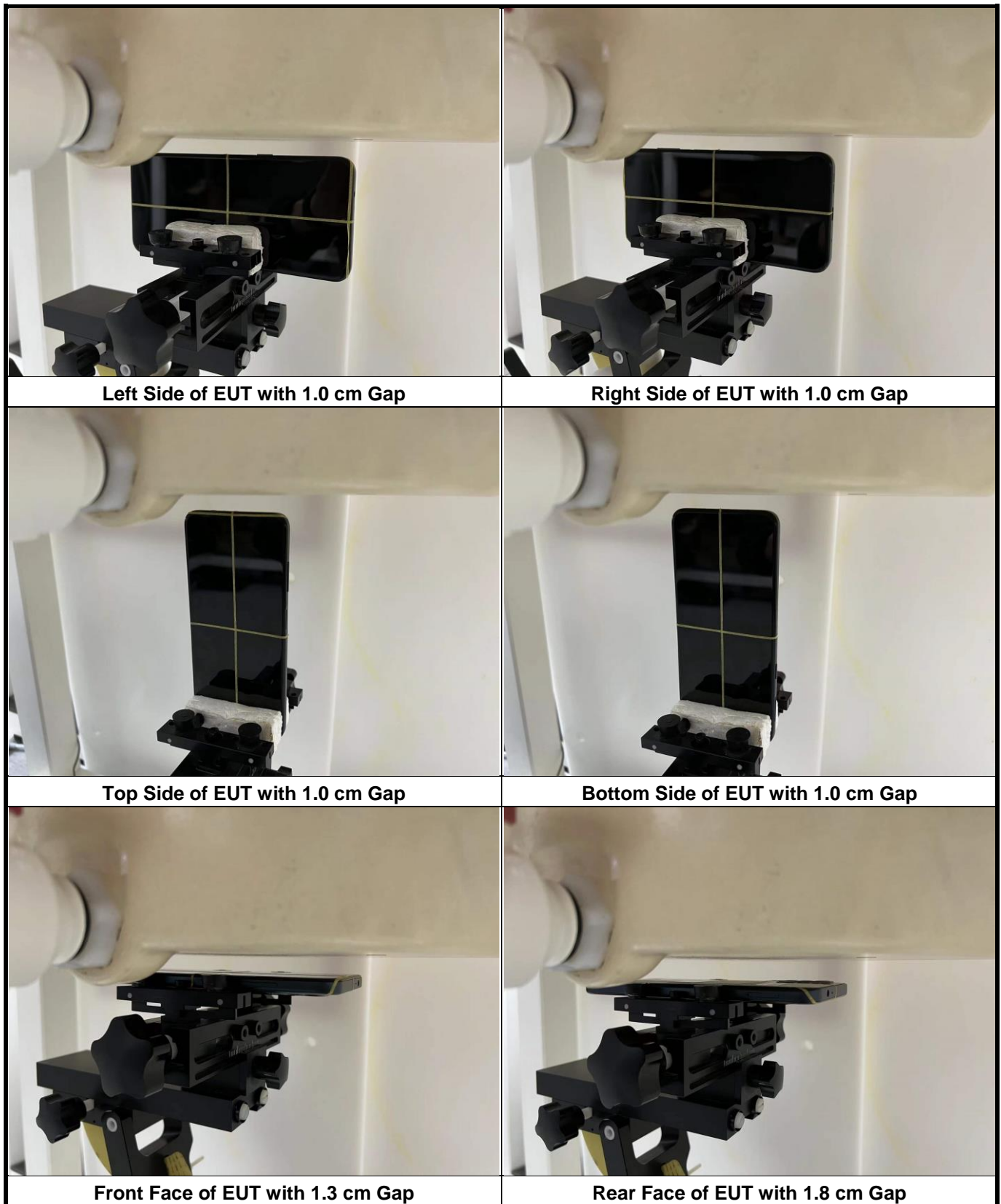


**Front Face of EUT with 1.0 cm Gap**



**Rear Face of EUT with 1.0 cm Gap**

## FCC SAR Test Report





## FCC SAR Test Report

