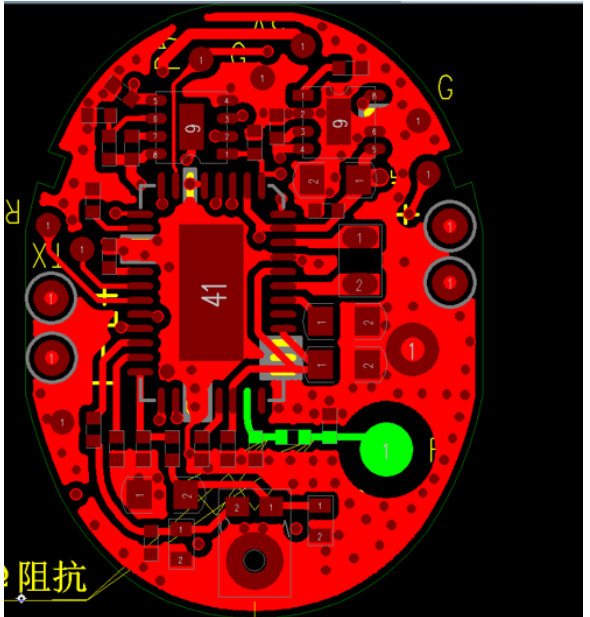
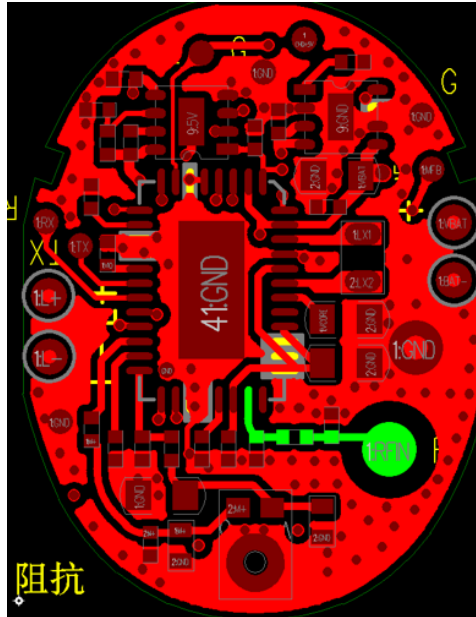
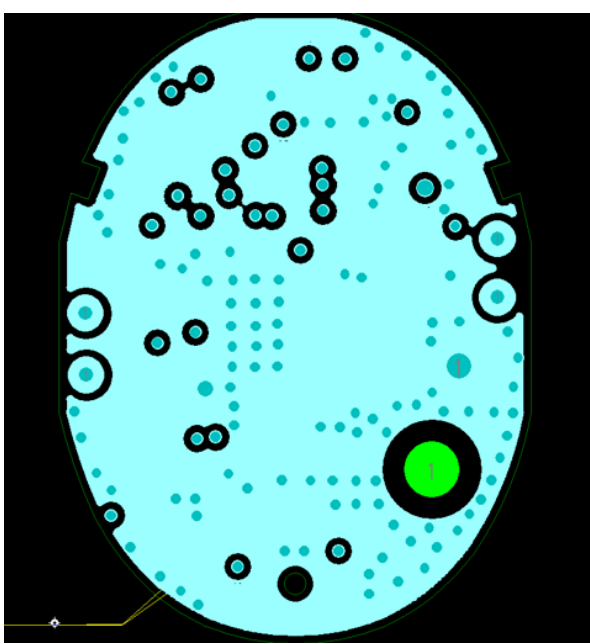
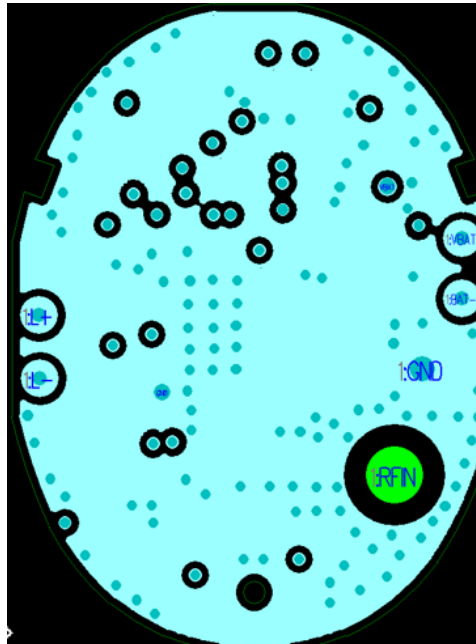
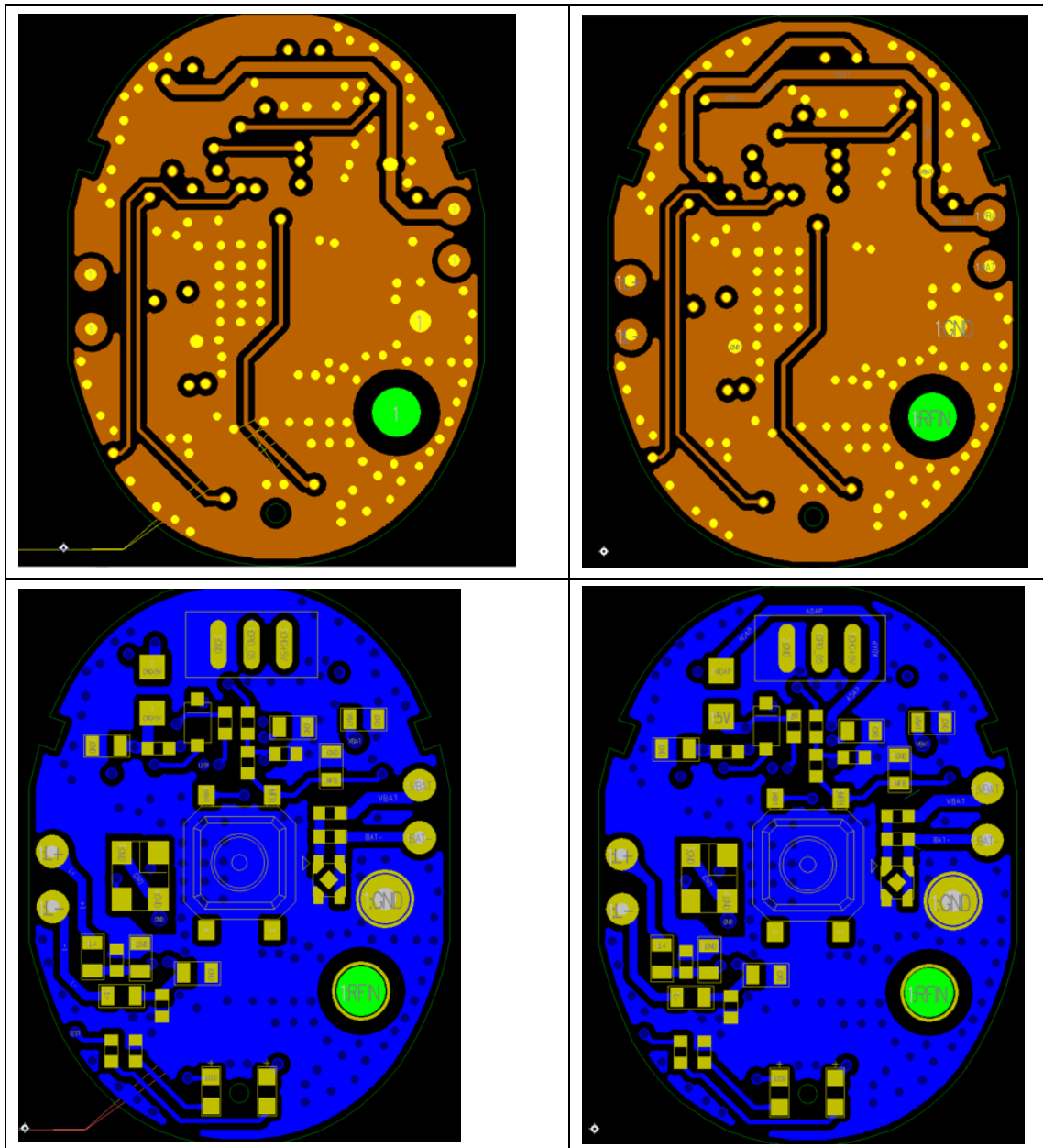


Date: 2/5/2021

Please be notified that we, the undersigned, The House of Marley.LLC declare that the reasons for this Class II permissive change are as below:

PCB lay change as below

Original	new
 <p>The original circuit board layout features a dense arrangement of components, including a central chip labeled '41' and various passive components. A red region, labeled '阻抗' (Impedance), is highlighted, indicating a specific area of interest or a design constraint. The layout is complex, with many small components and a high density of connections.</p>	 <p>The new circuit board layout shows a simplified arrangement of components, with the central chip still labeled '41'. The red region, labeled '阻抗' (Impedance), is still present but appears to be more defined and less complex than in the original layout. The overall design is cleaner and more organized.</p>
 <p>The original circuit board layout shows a dense arrangement of components, including a central chip labeled '41'. A blue region is highlighted, indicating a specific area of interest or a design constraint. The layout is complex, with many small components and a high density of connections.</p>	 <p>The new circuit board layout shows a simplified arrangement of components, with the central chip still labeled '41'. The blue region is still present but appears to be more defined and less complex than in the original layout. The overall design is cleaner and more organized.</p>



Thank you.
Sincerely.

Name (Printed): Josh Poulsen

Title: Director of Product Development

Signature:

A handwritten signature in black ink, appearing to read 'Josh Poulsen', is written over a yellow rectangular background.

On behalf of Company: The House of Marley.LLC