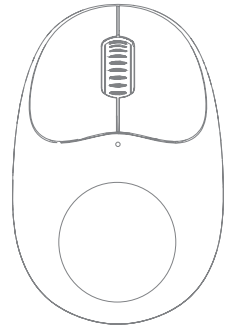
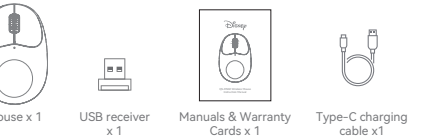




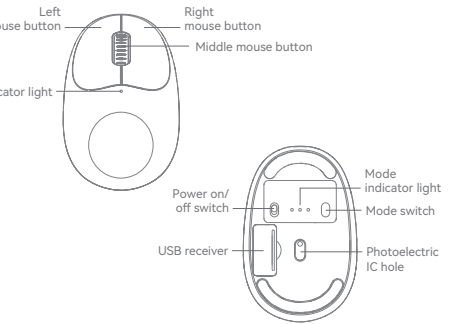
QS-MS02 Wireless Mouse Instruction Manual



Packing List



Product diagram



Kindly reminder

1. Do not attempt to disassemble or replace any parts of the product except for those operations specifically indicated in the instruction manual.
2. Do not put the product into water or any other liquid, this product is not waterproof design.
3. If any liquid accidentally enters the product, please disconnect and remove the product immediately.
4. To avoid electric shock, please make sure there is no water on your hands when installing or uninstalling the product.
5. Do not place this product near a heat source or expose it directly to a fire source.
6. Do not place this product in an environment with strong electromagnetic force, as this may cause the product to malfunction.

Product Specification

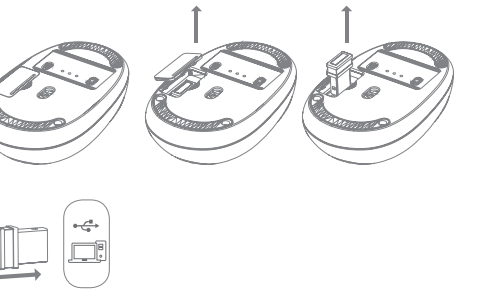
Mode	2.4G+BT5.0
Working distance	10M
Battery capacity	300mAh/3.7V
Battery Voltage	3.7V
Charging Voltage	4.2V
Charging Current	1A MAX
Charging time	90min
DPI	1200
Return rate	125Hz
Mouse Size	96*62.75*34.56mm

System Support

The mouse supports pairing with computers with Windows OS 8 and above, Mac OS 10.10 and above and Google Chrome OS installed.

USB receiver installation

- Open the USB compartment along the bottom, remove the USB receiver, and finally plug the receiver into your computer's USB port.



Mouse mode description

- Mode Indicator**
- 2.4G green light
 - BT1 blue light
 - BT2 blue light

- 2.4G mode:
Plug the USB receiver into the computer, short press the mode switch button, switch the mode switch to 2.4G gear can be used directly, factory default 2.4G mode.

- 2.4G strong pairing mode:
Long press the mode switch button for more than 3 seconds, the mouse will enter the strong pair code mode, at this time, insert the USB receiver to complete the connection.

- BT mode:
1. Short press the mode switch button to switch to BT1 or BT2 mode, then long press the mode switch button for more than 3 seconds, the mouse will enter pairing mode.
2. Then open the Bluetooth icon at the bottom of the computer desktop, click Add Bluetooth Device, search for the corresponding mouse device name, when it appears, click Pairing, and when it shows connected, you can start to use the mouse.

Mouse Name Description

- Wireless name: Disney 2.4G Mouse
- BT 4.0 Name: Disney BT4.0 Mouse
- BT 5.0 Name: Disney BT5.0 Mouse

Names and contents of hazardous substances in products

Name of the Parts	Hazardous Substances					
	Pb	Hg	Cd	Cr(VI)	PBB	PBDE
Housing	○	○	○	○	○	○
PCBA	×	○	○	○	○	○
Accessories	×	○	○	○	○	○

This table is compiled according to SJ/T 11364.

: Indicates that this hazardous substance contained in all of the homogeneous materials for this part is below the limit requirement in GB/T 26572

: Indicates that this hazardous substance contained in at least one of the homogeneous materials used for this part is the limit requirement in GB/T 26572.



Environment Friendly Use Period (EFUP)

This logo refers to the period (10 years) during which the hazardous substances in electronic and electrical products will not leak or mutate so that the use of these result in any severe environmental pollution, any bodily injury [substances] will not or damage to any assets.

Certificate of Approval

Product No: _____

Production Time: _____

QC: _____

Warranty statement

Disclaimer
This user manual does not have any form of guarantee, position expression or other implication. The mentioned products, specifications and information are for reference only, and the content will also be updated on the web at any time without additional separate notice.

Warranty statement:
The product attached to this document is guaranteed as follows: If the product is twelve (12) months from the date of purchase ("Warranty Period"), under normal conditions of use due to quality defects damaged, can be repaired. Free repair; free replacement if the manufacturer confirms that it cannot be repaired; repaired or replaced product. Continue to enjoy the warranty during the remaining warranty period (the shortest not less than 30 days). Purchased by sale the ticket date shall prevail; if the purchase date cannot be determined, the warranty period shall be 13 (13) months. If you apply for a warranty, please call the product service hotline first and execute it in the manner instructed by us. When applying for warranty, you need to provide an accurate, complete and clearly filled out valid sales invoice.

The above guarantee does not apply to the following situations:
1. Exceeding the validity period of the three packs;
2. Altering the warranty card and product code does not match the product body;
3. Causes caused by misuse, abuse or improper transportation, use, maintenance or storage obstacles or damage;
4. Failure or damage caused by force majeure (such as earthquake, war, disaster, etc.) or accident bad;
5. The zipper and tower buckle are damaged due to excessive force;
6. Disconnection or tearing caused by excessive load;
7. Any damage caused by sharp objects;
8. Products with signs of burning or flooding;
9. Damage caused by unauthorized disassembly;
10. Aging, discoloration, abrasion, rupture and other losses that occur during the normal use of the product.
11. If the original identification label of the product is changed or damaged, this guarantee will become invalid.

The completeness and appearance of the product and accompanying materials are not within the scope of the guarantee. You should check on the spot and raise objections to any discrepancies.

The above guarantees are all guarantees we make regarding the products, and are only applicable in mainland China. Nothing in this document affects consumer rights that cannot be excluded or restricted under the law profit.

Service supervision hotline: 400-885-8808



FCC Warning:

This equipment has been tested and found to comply with the limits for a Class B digital device, pursuant to part 15 of the FCC Rules. These limits are designed to provide reasonable protection against harmful interference in a residential installation. This equipment generates, uses and can radiate radio frequency energy and, if not installed and used in accordance with the instructions, may cause harmful interference to radio communications. However, there is no guarantee that interference will not occur in a particular installation. If this equipment does cause harmful interference to radio or television reception, which can be determined by turning the equipment off and on, the user is encouraged to try to correct the interference by one or more of the following measures:

- Reorient or relocate the receiving antenna.
- Increase the separation between the equipment and receiver.
- Connect the equipment into an outlet on a circuit different from that to which the receiver is connected.
- Consult the dealer or an experienced radio/TV technician for help.

Caution: Any changes or modifications to this device not explicitly approved by manufacturer could void your authority to operate this equipment.

This device complies with part 15 of the FCC Rules. Operation is subject to the following two conditions:

(1) This device may not cause harmful interference, and (2) this device must accept any interference received, including interference that may cause undesired operation.

This equipment complies with FCC radiation exposure limits set forth for an uncontrolled environment. This equipment should be installed and operated with minimum distance 0cm between the radiator and your body.