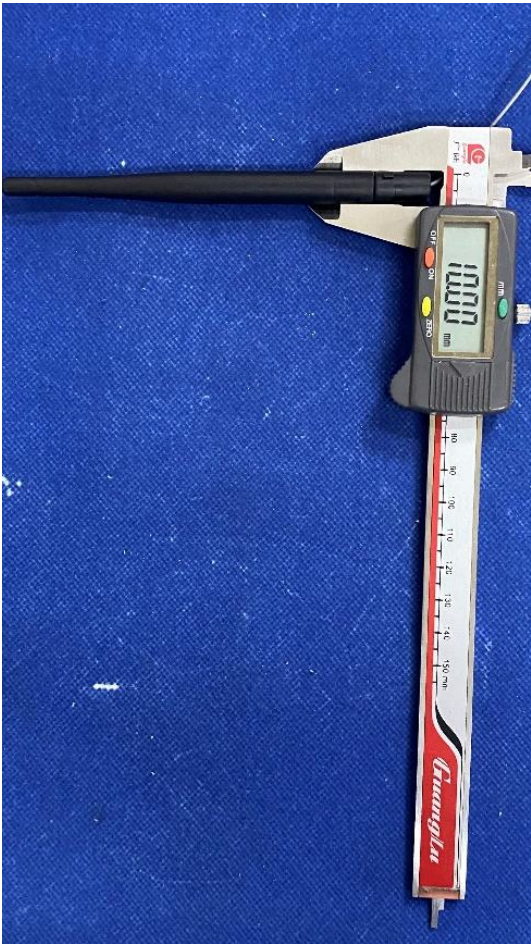


# 1. Antenna Description:

Antenna type	External antenna
Model	ON-DMI-50BW
Frequency range	5745-5825MHz
Manufacturer	SHENZHEN EXVIST TECHNOLOGY CO., LTD
Address	R502, Bldg 1, FuKang Commercial Plaza, Yousong Rd, Fukang Community, Longhua Street, Longhua District, Shenzhen, China
ANT Peak Gain	2.00 dBi

# 2. Antenna Photo:

Length: 132.56mm  
Width: 10.00mm



### 3. Test Equipment & Conditions

#### 3.1 Test instrument

VSWR is tested using Agilent E5071B connected to a hand mechanism, and the status is free space.

#### 3.2 Test environment and methods

Dark room specifications: ETS-743

TD-SCDMA test equipment: StarPoint SP6010/Agilent 8960

LTE-TDD/FDD-SCDMA test equipment: StarPoint SP8011/CMW500

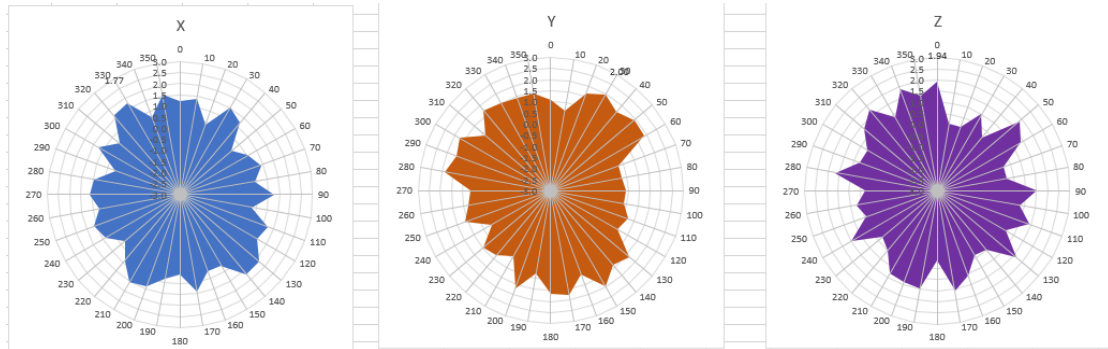
WCDMA/GSM/CDMA test equipment: Agilent 8960

Passive efficiency testing equipment: Agilent Technologies E5071B

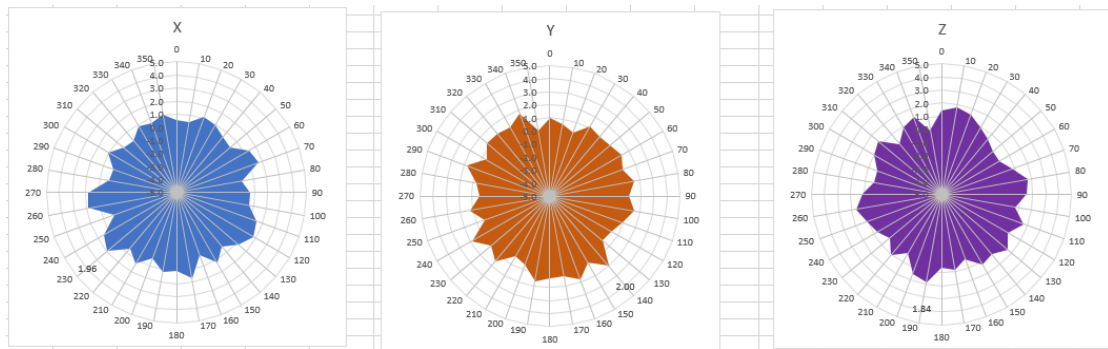


## 4 . Antenna Radiation Pattern

5745MHz



5785MHz



5825MHz

