

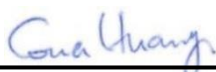


FCC SAR TEST REPORT

FCC ID : S9E-121900
Equipment : Rugged Handheld Computer
Brand Name : Trimble
Model Name : 121900
Applicant : Trimble Inc.
Manufacturer : 5475 Kellenburger Rd., Dayton,
Ohio, United States 45424
Standard : FCC 47 CFR Part 2 (2.1093)

The product was received on Sep. 07, 2020 and testing was started from Sep. 24, 2020 and completed on Oct. 02, 2020. We, SPORTON INTERNATIONAL INC., would like to declare that the tested sample provide by manufacturer and the test data has been evaluated in accordance with the test procedures given in 47 CFR Part 2.1093 and FCC KDB and has been pass the FCC requirement.

The test results in this report apply exclusively to the tested model / sample. Without written approval of SPORTON INTERNATIONAL INC. EMC & Wireless Communications Laboratory, the test report shall not be reproduced except in full.



Approved by: Cona Huang / Deputy Manager

SPORTON INTERNATIONAL INC. EMC & Wireless Communications Laboratory
No. 52, Huaya 1st Rd., Guishan Dist., Taoyuan City, Taiwan (R.O.C.)

Table of Contents

1. Statement of Compliance	4
2. Guidance Applied.....	4
3. Equipment Under Test (EUT) Information.....	5
3.1 General Information	5
4. RF Exposure Limits	6
4.1 Uncontrolled Environment.....	6
4.2 Controlled Environment.....	6
5. Specific Absorption Rate (SAR).....	7
5.1 Introduction	7
5.2 SAR Definition.....	7
6. System Description and Setup	8
6.1 Test Site Location.....	8
6.2 E-Field Probe	10
6.3 Data Acquisition Electronics (DAE)	10
6.4 Phantom.....	11
6.5 Device Holder	12
7. Measurement Procedures	13
7.1 Spatial Peak SAR Evaluation.....	13
7.2 Power Reference Measurement.....	14
7.3 Area Scan	14
7.4 Zoom Scan.....	15
7.5 Volume Scan Procedures.....	15
7.6 Power Drift Monitoring.....	15
8. Test Equipment List.....	16
9. System Verification	17
9.1 Tissue Simulating Liquids.....	17
9.2 Tissue Verification	18
9.3 System Performance Check Results.....	19
10. WiFi/Bluetooth Output Power (Unit: dBm)	20
11. Antenna Location	25
12. SAR Test Results	26
12.1 Body SAR	27
12.2 Extremity SAR.....	28
13. Simultaneous Transmission Analysis.....	30
13.1 Body Exposure Conditions.....	30
13.2 Extremity Exposure Conditions	30
14. Uncertainty Assessment	31
15. References.....	31
Appendix A. Plots of System Performance Check	
Appendix B. Plots of High SAR Measurement	
Appendix C. DASY Calibration Certificate	
Appendix D. Test Setup Photos	



History of this test report

Report No.	Version	Description	Issued Date
FA081931	01	Initial issue of report	Oct. 27, 2020
FA081931	02	Update section3.1	Nov. 11, 2020

1. Statement of Compliance

The maximum results of Specific Absorption Rate (SAR) found during testing for Trimble Inc., Rugged Handheld Computer, 121900, are as follows.

Equipment Class	Frequency Band	Highest SAR Summary		Highest Simultaneous Transmission	
		Body (Separation 10mm)	Extremity (Separation 0mm)		
		1g SAR (W/kg)	10g SAR (W/kg)	1g SAR (W/kg)	10g SAR (W/kg)
DTS	2.4GHz WLAN	0.14	0.11	0.22	0.18
NII	5GHz WLAN	0.44	0.30	0.50	0.37
DSS	Bluetooth	0.04	0.03	0.17	0.11
Date of Testing:		2020/09/24 ~ 2020/10/02			

Sporton Lab is accredited to ISO 17025 by Taiwan Accreditation Foundation (TAF code: 1190) and the FCC designation No. TW1190 under the FCC 2.948(e) by Mutual Recognition Agreement (MRA) in FCC test. This device is in compliance with Specific Absorption Rate (SAR) for general population/uncontrolled exposure limits (1.6 W/kg for Partial-Body 1g SAR, 4.0 W/kg for Product Specific 10g SAR) specified in FCC 47 CFR part 2 (2.1093) and ANSI/IEEE C95.1-1992, and had been tested in accordance with the measurement methods and procedures specified in IEEE 1528-2013 and FCC KDB publications.

Reviewed by: Jason Wang
Report Producer: Paula Chen

2. Guidance Applied

The Specific Absorption Rate (SAR) testing specification, method, and procedure for this device is in accordance with the following standards, the below KDB standard may not including in the TAF code without accreditation.

- FCC 47 CFR Part 2 (2.1093)
- ANSI/IEEE C95.1-1992
- IEEE 1528-2013
- FCC KDB 865664 D01 SAR Measurement 100 MHz to 6 GHz v01r04
- FCC KDB 865664 D02 SAR Reporting v01r02
- FCC KDB 447498 D01 General RF Exposure Guidance v06
- FCC KDB 248227 D01 802.11 Wi-Fi SAR v02r02

3. Equipment Under Test (EUT) Information

3.1 General Information

Product Feature & Specification	
Equipment Name	Rugged Handheld Computer
Brand Name	Trimble
Model Name	121900
FCC ID	S9E-121900
Wireless Technology and Frequency Range	WLAN 2.4GHz Band: 2400 MHz ~ 2483.5 MHz WLAN 5.2GHz Band: 5150 MHz ~ 5250 MHz WLAN 5.3GHz Band: 5250 MHz ~ 5350 MHz WLAN 5.6GHz Band: 5470 MHz ~ 5725 MHz WLAN 5.8GHz Band: 5725 MHz ~ 5825 MHz Bluetooth: 2400 MHz ~ 2483.5 MHz
Mode	WLAN: 802.11a/b/g/n/ac HT20/HT40/VHT20/VHT40/VHT80 Bluetooth BR/EDR/LE
SW Version	QKQ1.200519.001.00.12.03
General Note: <ol style="list-style-type: none"> This product comes with a screen protector, protective pouch, stylus and hand strap, but these accessory does not have significant affect the evaluation results of this report. The body SAR was measured @10 mm which represents the worst case. The protective pouch provides extra separation distance against user body with more than 10 mm, therefore additional measurement with respect to the protective pouch is unnecessary. 	

4. RF Exposure Limits

4.1 Uncontrolled Environment

Uncontrolled Environments are defined as locations where there is the exposure of individuals who have no knowledge or control of their exposure. The general population/uncontrolled exposure limits are applicable to situations in which the general public may be exposed or in which persons who are exposed as a consequence of their employment may not be made fully aware of the potential for exposure or cannot exercise control over their exposure. Members of the general public would come under this category when exposure is not employment-related; for example, in the case of a wireless transmitter that exposes persons in its vicinity.

4.2 Controlled Environment

Controlled Environments are defined as locations where there is exposure that may be incurred by persons who are aware of the potential for exposure, (i.e. as a result of employment or occupation). In general, occupational/controlled exposure limits are applicable to situations in which persons are exposed as a consequence of their employment, who have been made fully aware of the potential for exposure and can exercise control over their exposure. The exposure category is also applicable when the exposure is of a transient nature due to incidental passage through a location where the exposure levels may be higher than the general population/uncontrolled limits, but the exposed person is fully aware of the potential for exposure and can exercise control over his or her exposure by leaving the area or by some other appropriate means.

Limits for Occupational/Controlled Exposure (W/kg)

Whole-Body	Partial-Body	Hands, Wrists, Feet and Ankles
0.4	8.0	20.0

Limits for General Population/Uncontrolled Exposure (W/kg)

Whole-Body	Partial-Body	Hands, Wrists, Feet and Ankles
0.08	1.6	4.0

1. Whole-Body SAR is averaged over the entire body, partial-body SAR is averaged over any 1gram of tissue defined as a tissue volume in the shape of a cube. SAR for hands, wrists, feet and ankles is averaged over any 10 grams of tissue defined as a tissue volume in the shape of a cube.

5. Specific Absorption Rate (SAR)

5.1 Introduction

SAR is related to the rate at which energy is absorbed per unit mass in an object exposed to a radio field. The SAR distribution in a biological body is complicated and is usually carried out by experimental techniques or numerical modeling. The standard recommends limits for two tiers of groups, occupational/controlled and general population/uncontrolled, based on a person's awareness and ability to exercise control over his or her exposure. In general, occupational/controlled exposure limits are higher than the limits for general population/uncontrolled.

5.2 SAR Definition

The SAR definition is the time derivative (rate) of the incremental energy (dW) absorbed by (dissipated in) an incremental mass (dm) contained in a volume element (dv) of a given density (ρ). The equation description is as below:

$$SAR = \frac{d}{dt} \left(\frac{dW}{dm} \right) = \frac{d}{dt} \left(\frac{dW}{\rho dv} \right)$$

SAR is expressed in units of Watts per kilogram (W/kg)

$$SAR = \frac{\sigma |E|^2}{\rho}$$

Where: σ is the conductivity of the tissue, ρ is the mass density of the tissue and E is the RMS electrical field strength.



FCC SAR TEST REPORT

Report No. : FA081931


1190). The ISED Assigned Code is 4086B and 4086H

Test Side	SPORTON INTERNATIONAL INC. EMC & Wireless Communications Laboratory			
Test Site Location	4086B No. 52, Huaya 1st Rd., Guishan Dist., Taoyuan City 333, CHINESE TAIPEI		4086H No. 58, Aly. 75, Ln. 564, Wehnua 3rd, Rd., Guishan Dist., Taoyuan City, CHINESE TAIPEI	
Test Site No.	SAR01-HY	SAR03-HY	SAR08-HY	SAR09-HY
	SAR04-HY	SAR05-HY	SAR11-HY	SAR12-HY
	SAR06-HY	SAR10-HY		


6.2 E-Field Probe

The SAR measurement is conducted with the dosimetric probe (manufactured by SPEAG). The probe is specially designed and calibrated for use in liquid with high permittivity. The dosimetric probe has special calibration in liquid at different frequency. This probe has a built in optical surface detection system to prevent from collision with phantom.

<ES3DV3 Probe>

Construction	Symmetric design with triangular core Interleaved sensors Built-in shielding against static charges PEEK enclosure material (resistant to organic solvents, e.g., DGBE)	
Frequency	10 MHz – 4 GHz; Linearity: ± 0.2 dB (30 MHz – 4 GHz)	
Directivity	± 0.2 dB in TSL (rotation around probe axis) ± 0.3 dB in TSL (rotation normal to probe axis)	
Dynamic Range	5 μ W/g – >100 mW/g; Linearity: ± 0.2 dB	
Dimensions	Overall length: 337 mm (tip: 20 mm) Tip diameter: 3.9 mm (body: 12 mm) Distance from probe tip to dipole centers: 3.0 mm	

<EX3DV4 Probe>

Construction	Symmetric design with triangular core Built-in shielding against static charges PEEK enclosure material (resistant to organic solvents, e.g., DGBE)	
Frequency	10 MHz – >6 GHz Linearity: ± 0.2 dB (30 MHz – 6 GHz)	
Directivity	± 0.3 dB in TSL (rotation around probe axis) ± 0.5 dB in TSL (rotation normal to probe axis)	
Dynamic Range	10 μ W/g – >100 mW/g Linearity: ± 0.2 dB (noise: typically <1 μ W/g)	
Dimensions	Overall length: 337 mm (tip: 20 mm) Tip diameter: 2.5 mm (body: 12 mm) Typical distance from probe tip to dipole centers: 1 mm	

6.3 Data Acquisition Electronics (DAE)

The data acquisition electronics (DAE) consists of a highly sensitive electrometer-grade preamplifier with auto-zeroing, a channel and gain-switching multiplexer, a fast 16 bit AD-converter and a command decoder and control logic unit. Transmission to the measurement server is accomplished through an optical downlink for data and status information as well as an optical uplink for commands and the clock.

The input impedance of the DAE is 200 MOhm; the inputs are symmetrical and floating. Common mode rejection is above 80 dB.

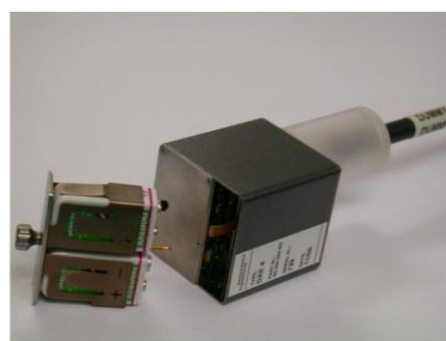



Fig 5.1 Photo of DAE


6.4 Phantom

<SAM Twin Phantom>

Shell Thickness	2 ± 0.2 mm; Center ear point: 6 ± 0.2 mm	
Filling Volume	Approx. 25 liters	
Dimensions	Length: 1000 mm; Width: 500 mm; Height: adjustable feet	
Measurement Areas	Left Hand, Right Hand, Flat Phantom	

The bottom plate contains three pair of bolts for locking the device holder. The device holder positions are adjusted to the standard measurement positions in the three sections. A white cover is provided to tap the phantom during off-periods to prevent water evaporation and changes in the liquid parameters. On the phantom top, three reference markers are provided to identify the phantom position with respect to the robot.

<ELI Phantom>

Shell Thickness	2 ± 0.2 mm (sagging: <1%)	
Filling Volume	Approx. 30 liters	
Dimensions	Major ellipse axis: 600 mm Minor axis: 400 mm	

The ELI phantom is intended for compliance testing of handheld and body-mounted wireless devices in the frequency range of 30 MHz to 6 GHz. ELI4 is fully compatible with standard and all known tissue simulating liquids.

6.5 Device Holder

<Mounting Device for Hand-Held Transmitter>

In combination with the Twin SAM V5.0/V5.0c or ELI phantoms, the Mounting Device for Hand-Held Transmitters enables rotation of the mounted transmitter device to specified spherical coordinates. At the heads, the rotation axis is at the ear opening. Transmitter devices can be easily and accurately positioned according to IEC 62209-1, IEEE 1528, FCC, or other specifications. The device holder can be locked for positioning at different phantom sections (left head, right head, flat). And upgrade kit to Mounting Device to enable easy mounting of wider devices like big smart-phones, e-books, small tablets, etc. It holds devices with width up to 140 mm.



Mounting Device for Hand-Held Transmitters



Mounting Device Adaptor for Wide-Phones

<Mounting Device for Laptops and other Body-Worn Transmitters>

The extension is lightweight and made of POM, acrylic glass and foam. It fits easily on the upper part of the mounting device in place of the phone positioned. The extension is fully compatible with the SAM Twin and ELI phantoms.



Mounting Device for Laptops

7. Measurement Procedures

The measurement procedures are as follows:

<Conducted power measurement>

- (a) For WWAN power measurement, use base station simulator to configure EUT WWAN transmission in conducted connection with RF cable, at maximum power in each supported wireless interface and frequency band.
- (b) Read the WWAN RF power level from the base station simulator.
- (c) For WLAN/BT power measurement, use engineering software to configure EUT WLAN/BT continuously transmission, at maximum RF power in each supported wireless interface and frequency band
- (d) Connect EUT RF port through RF cable to the power meter, and measure WLAN/BT output power

<SAR measurement>

- (a) Use base station simulator to configure EUT WWAN transmission in radiated connection, and engineering software to configure EUT WLAN/BT continuously transmission, at maximum RF power, in the highest power channel.
- (b) Place the EUT in the positions as Appendix D demonstrates.
- (c) Set scan area, grid size and other setting on the DASY software.
- (d) Measure SAR results for the highest power channel on each testing position.
- (e) Find out the largest SAR result on these testing positions of each band
- (f) Measure SAR results for other channels in worst SAR testing position if the reported SAR of highest power channel is larger than 0.8 W/kg

According to the test standard, the recommended procedure for assessing the peak spatial-average SAR value consists of the following steps:

- (a) Power reference measurement
- (b) Area scan
- (c) Zoom scan
- (d) Power drift measurement

7.1 Spatial Peak SAR Evaluation

The procedure for spatial peak SAR evaluation has been implemented according to the test standard. It can be conducted for 1g and 10g, as well as for user-specific masses. The DASY software includes all numerical procedures necessary to evaluate the spatial peak SAR value.

The base for the evaluation is a "cube" measurement. The measured volume must include the 1g and 10g cubes with the highest averaged SAR values. For that purpose, the center of the measured volume is aligned to the interpolated peak SAR value of a previously performed area scan.

The entire evaluation of the spatial peak values is performed within the post-processing engine (SEMCAD). The system always gives the maximum values for the 1g and 10g cubes. The algorithm to find the cube with highest averaged SAR is divided into the following stages:

- (a) Extraction of the measured data (grid and values) from the Zoom Scan
- (b) Calculation of the SAR value at every measurement point based on all stored data (A/D values and measurement parameters)
- (c) Generation of a high-resolution mesh within the measured volume
- (d) Interpolation of all measured values from the measurement grid to the high-resolution grid
- (e) Extrapolation of the entire 3-D field distribution to the phantom surface over the distance from sensor to surface
- (f) Calculation of the averaged SAR within masses of 1g and 10g

7.2 Power Reference Measurement

The Power Reference Measurement and Power Drift Measurements are for monitoring the power drift of the device under test in the batch process. The minimum distance of probe sensors to surface determines the closest measurement point to phantom surface. This distance cannot be smaller than the distance of sensor calibration points to probe tip as defined in the probe properties.

7.3 Area Scan

The area scan is used as a fast scan in two dimensions to find the area of high field values, before doing a fine measurement around the hot spot. The sophisticated interpolation routines implemented in DASY software can find the maximum found in the scanned area, within a range of the global maximum. The range (in dB) is specified in the standards for compliance testing. For example, a 2 dB range is required in IEEE standard 1528 and IEC 62209 standards, whereby 3 dB is a requirement when compliance is assessed in accordance with the ARIB standard (Japan), if only one zoom scan follows the area scan, then only the absolute maximum will be taken as reference. For cases where multiple maximums are detected, the number of zoom scans has to be increased accordingly.

Area scan parameters extracted from FCC KDB 865664 D01v01r04 SAR measurement 100 MHz to 6 GHz.

	≤ 3 GHz	> 3 GHz
Maximum distance from closest measurement point (geometric center of probe sensors) to phantom surface	5 ± 1 mm	$\frac{1}{2} \cdot \delta \cdot \ln(2) \pm 0.5$ mm
Maximum probe angle from probe axis to phantom surface normal at the measurement location	$30^\circ \pm 1^\circ$	$20^\circ \pm 1^\circ$
Maximum area scan spatial resolution: Δx_{Area} , Δy_{Area}	≤ 2 GHz: ≤ 15 mm $2 - 3$ GHz: ≤ 12 mm	$3 - 4$ GHz: ≤ 12 mm $4 - 6$ GHz: ≤ 10 mm
	When the x or y dimension of the test device, in the measurement plane orientation, is smaller than the above, the measurement resolution must be \leq the corresponding x or y dimension of the test device with at least one measurement point on the test device.	

7.4 Zoom Scan

Zoom scans are used to assess the peak spatial SAR values within a cubic averaging volume containing 1 gram and 10 gram of simulated tissue. The zoom scan measures points (refer to table below) within a cube whose base faces are centered on the maxima found in a preceding area scan job within the same procedure. When the measurement is done, the zoom scan evaluates the averaged SAR for 1 gram and 10 gram and displays these values next to the job's label.

Zoom scan parameters extracted from FCC KDB 865664 D01v01r04 SAR measurement 100 MHz to 6 GHz.

			≤ 3 GHz	> 3 GHz
Maximum zoom scan spatial resolution: $\Delta x_{\text{Zoom}}, \Delta y_{\text{Zoom}}$			≤ 2 GHz: ≤ 8 mm 2 – 3 GHz: ≤ 5 mm *	3 – 4 GHz: ≤ 5 mm* 4 – 6 GHz: ≤ 4 mm *
Maximum zoom scan spatial resolution, normal to phantom surface	uniform grid: $\Delta z_{\text{Zoom}}(n)$		≤ 5 mm	3 – 4 GHz: ≤ 4 mm 4 – 5 GHz: ≤ 3 mm 5 – 6 GHz: ≤ 2 mm
	graded grid	$\Delta z_{\text{Zoom}}(1)$: between 1 st two points closest to phantom surface	≤ 4 mm	3 – 4 GHz: ≤ 3 mm 4 – 5 GHz: ≤ 2.5 mm 5 – 6 GHz: ≤ 2 mm
		$\Delta z_{\text{Zoom}}(n>1)$: between subsequent points	$\leq 1.5 \cdot \Delta z_{\text{Zoom}}(n-1)$	
Minimum zoom scan volume	x, y, z		≥ 30 mm	3 – 4 GHz: ≥ 28 mm 4 – 5 GHz: ≥ 25 mm 5 – 6 GHz: ≥ 22 mm
Note: δ is the penetration depth of a plane-wave at normal incidence to the tissue medium; see draft standard IEEE P1528-2011 for details.				
* When zoom scan is required and the <i>reported</i> SAR from the <i>area scan based 1-g SAR estimation</i> procedures of KDB 447498 is ≤ 1.4 W/kg, ≤ 8 mm, ≤ 7 mm and ≤ 5 mm zoom scan resolution may be applied, respectively, for 2 GHz to 3 GHz, 3 GHz to 4 GHz and 4 GHz to 6 GHz.				

7.5 Volume Scan Procedures

The volume scan is used to assess overlapping SAR distributions for antennas transmitting in different frequency bands. It is equivalent to an oversized zoom scan used in standalone measurements. The measurement volume will be used to enclose all the simultaneous transmitting antennas. For antennas transmitting simultaneously in different frequency bands, the volume scan is measured separately in each frequency band. In order to sum correctly to compute the 1g aggregate SAR, the EUT remain in the same test position for all measurements and all volume scan use the same spatial resolution and grid spacing. When all volume scan were completed, the software, SEMCAD postprocessor can combine and subsequently superpose these measurement data to calculating the multiband SAR.

7.6 Power Drift Monitoring

All SAR testing is under the EUT install full charged battery and transmit maximum output power. In DASY measurement software, the power reference measurement and power drift measurement procedures are used for monitoring the power drift of EUT during SAR test. Both these procedures measure the field at a specified reference position before and after the SAR testing. The software will calculate the field difference in dB. If the power drifts more than 5%, the SAR will be retested.

8. Test Equipment List

Manufacturer	Name of Equipment	Type/Model	Serial Number	Calibration	
				Last Cal.	Due Date
SPEAG	2450MHz System Validation Kit	D2450V2	929	Nov. 21, 2019	Nov. 20, 2020
SPEAG	5GHz System Validation Kit	D5GHzV2 ⁽²⁾	1006	Sep. 27, 2018	Sep. 24, 2021
SPEAG	Data Acquisition Electronics	DAE4	376	Dec. 06, 2019	Dec. 05, 2020
SPEAG	Data Acquisition Electronics	DAE4	699	Feb. 26, 2020	Feb. 25, 2021
SPEAG	Dosimetric E-Field Probe	ES3DV3	3169	May. 27, 2020	May. 26, 2021
SPEAG	Dosimetric E-Field Probe	EX3DV4	3728	Feb. 04, 2020	Feb. 03, 2021
RCPTWN	Thermometer	HTC-1	TM685-1	Nov. 12, 2019	Nov. 11, 2020
RCPTWN	Thermometer	HTC-1	TM560-2	Nov. 12, 2019	Nov. 11, 2020
R&S	BT Base Station	CBT	100815	Feb. 15, 2020	Feb. 14, 2021
SPEAG	Device Holder	N/A	N/A	N/A	N/A
Anritsu	Signal Generator	MG3710A	6201502524	Nov. 20, 2019	Nov. 19, 2020
Agilent	ENA Network Analyzer	E5071C	MY46101588	Jun. 10, 2020	Jun. 09, 2021
SPEAG	Dielectric Probe Kit	DAK-3.5	1146	Jul. 22, 2020	Jul. 21, 2021
LINE SEIKI	Digital Thermometer	DTM3000-spezial	2942	Nov. 18, 2019	Nov. 17, 2020
Anritsu	Power Meter	ML2495A	1419002	Aug. 19, 2020	Aug. 18, 2021
Anritsu	Power Sensor	MA2411B	1911176	Aug. 18, 2020	Aug. 17, 2021
Anritsu	Spectrum Analyzer	N9010A	MY53470118	Mar. 12, 2020	Mar. 11, 2021
Mini-Circuits	Power Amplifier	ZVE-8G+	479102029	Aug. 26, 2020	Aug. 25, 2021
ATM	Dual Directional Coupler	C122H-10	P610410z-02	Note 1	
Woken	Attenuator 1	WK0602-XX	N/A	Note 1	
PE	Attenuator 2	PE7005-10	N/A	Note 1	
PE	Attenuator 3	PE7005- 3	N/A	Note 1	

General Note:

1. Prior to system verification and validation, the path loss from the signal generator to the system check source and the power meter, which includes the amplifier, cable, attenuator and directional coupler, was measured by the network analyzer. The reading of the power meter was offset by the path loss difference between the path to the power meter and the path to the system check source to monitor the actual power level fed to the system check source.
2. The dipole calibration interval can be extended to 3 years with justification according to KDB 865664 D01. The dipoles are also not physically damaged, or repaired during the interval. The justification data in appendix C can be found which the return loss is < -20dB, within 20% of prior calibration, the impedance is within 5 ohm of prior calibration for each dipole.

9. System Verification

9.1 Tissue Simulating Liquids

For the measurement of the field distribution inside the SAM phantom with DASY, the phantom must be filled with around 25 liters of homogeneous body tissue simulating liquid. For head SAR testing, the liquid height from the ear reference point (ERP) of the phantom to the liquid top surface is larger than 15 cm, which is shown in Fig. 10.1. For body SAR testing, the liquid height from the center of the flat phantom to the liquid top surface is larger than 15 cm, which is shown in Fig. 10.2.

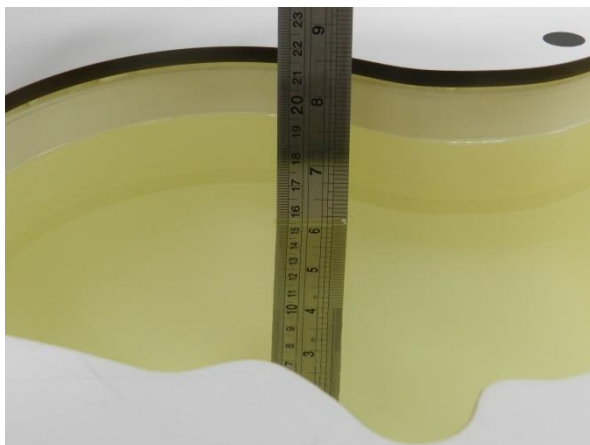


Fig 10.1Photo of Liquid Height for Head SAR



Fig 10.2 Photo of Liquid Height for Body SAR

9.2 Tissue Verification

The following tissue formulations are provided for reference only as some of the parameters have not been thoroughly verified. The composition of ingredients may be modified accordingly to achieve the desired target tissue parameters required for routine SAR evaluation.

Frequency (MHz)	Water (%)	Sugar (%)	Cellulose (%)	Salt (%)	Preventol (%)	DGBE (%)	Conductivity (σ)	Permittivity (ϵ_r)
750	41.1	57.0	0.2	1.4	0.2	0	0.89	41.9
835	40.3	57.9	0.2	1.4	0.2	0	0.90	41.5
900	40.3	57.9	0.2	1.4	0.2	0	0.97	41.5
1800, 1900, 2000	55.2	0	0	0.3	0	44.5	1.40	40.0
2450	55.0	0	0	0	0	45.0	1.80	39.2
2600	54.8	0	0	0.1	0	45.1	1.96	39.0

Simulating Liquid for 5GHz, Manufactured by SPEAG

Ingredients	(% by weight)
Water	64~78%
Mineral oil	11~18%
Emulsifiers	9~15%
Additives and Salt	2~3%

<Tissue Dielectric Parameter Check Results>

Frequency (MHz)	Liquid Temp. (°C)	Conductivity (σ)	Permittivity (ϵ_r)	Conductivity Target (σ)	Permittivity Target (ϵ_r)	Delta (σ) (%)	Delta (ϵ_r) (%)	Limit (%)	Date
2450	22.6	1.825	40.009	1.80	39.20	1.39	2.06	±5	2020/9/24
2450	22.1	1.821	39.826	1.80	39.20	1.17	1.60	±5	2020/9/30
5250	22.8	4.663	37.268	4.71	35.95	-1.00	3.67	±5	2020/10/2
5600	22.8	5.038	36.733	5.07	35.50	-0.63	3.47	±5	2020/10/2
5750	22.8	5.185	36.557	5.22	35.35	-0.67	3.41	±5	2020/10/2

9.3 System Performance Check Results

Comparing to the original SAR value provided by SPEAG, the verification data should be within its specification of 10 %. Below table shows the target SAR and measured SAR after normalized to 1W input power. The table below indicates the system performance check can meet the variation criterion and the plots can be referred to Appendix A of this report.

Date	Frequency (MHz)	Input Power (mW)	Dipole S/N	Probe S/N	DAE S/N	Measured 1g SAR (W/kg)	Targeted 1g SAR (W/kg)	Normalized 1g SAR (W/kg)	Deviation (%)
2020/9/24	2450	250	D2450V2-929	ES3DV3 - SN3169	DAE4 Sn699	12.60	53.10	50.4	-5.08
2020/9/30	2450	250	D2450V2-929	ES3DV3 - SN3169	DAE4 Sn699	13.30	53.10	53.2	0.19
2020/10/2	5250	100	D5GHzV2-1006-5250	EX3DV4 - SN3728	DAE4 Sn376	7.80	80.70	78	-3.35
2020/10/2	5600	100	D5GHzV2-1006-5600	EX3DV4 - SN3728	DAE4 Sn376	8.51	83.30	85.1	2.16
2020/10/2	5750	100	D5GHzV2-1006-5750	EX3DV4 - SN3728	DAE4 Sn376	7.80	80.40	78	-2.99

Date	Frequency (MHz)	Input Power (mW)	Dipole S/N	Probe S/N	DAE S/N	Measured 10g SAR (W/kg)	Targeted 10g SAR (W/kg)	Normalized 10g SAR (W/kg)	Deviation (%)
2020/9/24	2450	250	D2450V2-929	ES3DV3 - SN3169	DAE4 Sn699	6.01	24.70	24.04	-2.67
2020/9/30	2450	250	D2450V2-929	ES3DV3 - SN3169	DAE4 Sn699	6.18	24.70	24.72	0.08
2020/10/2	5250	100	D5GHzV2-1006-5250	EX3DV4 - SN3728	DAE4 Sn376	2.21	23.20	22.1	-4.74
2020/10/2	5600	100	D5GHzV2-1006-5600	EX3DV4 - SN3728	DAE4 Sn376	2.40	23.80	24	0.84
2020/10/2	5750	100	D5GHzV2-1006-5750	EX3DV4 - SN3728	DAE4 Sn376	2.20	22.90	22	-3.93

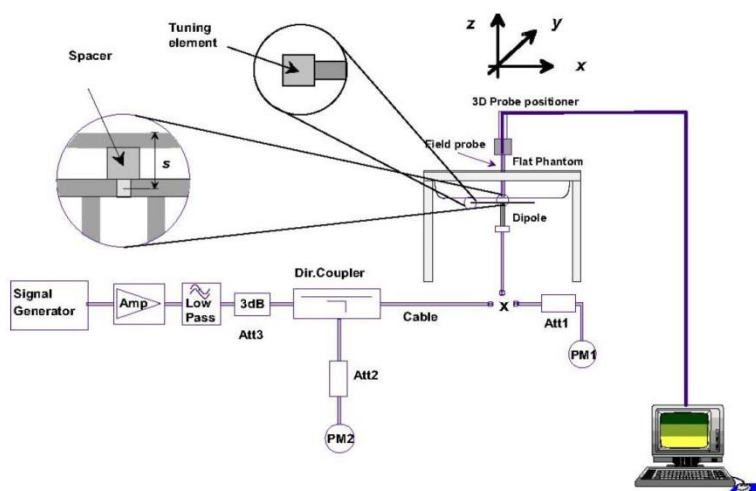


Fig 8.3.1 System Performance Check Setup



Fig 8.3.2 Setup Photo

10. WiFi/Bluetooth Output Power (Unit: dBm)

General Note:

1. For each antenna, transmit power in SISO operation is larger than (or equal to) the power in MIMO operation, RF exposure compliance of MIMO mode can be deduced from the compliance simultaneous transmission of antennas operating in SISO mode.
2. Per KDB 248227 D01v02r02, the simultaneous SAR provisions in KDB publication 447498 should be applied to determine simultaneous transmission SAR test exclusion for WiFi MIMO. If the sum of 1g single transmission chain SAR measurements is $< 1.6\text{W/kg}$ and SAR peak to location ratio ≤ 0.04 , no additional SAR measurements for MIMO.
3. The maximum output power specified for production units are determined for all applicable 802.11 transmission modes in each standalone and aggregated frequency band. Maximum output power is measured for the highest maximum output power configuration(s) in each frequency band according to the default power measurement procedures. For "Not required", SAR Test reduction was applied from KDB 248227 guidance, Sec. 2.1, b), 1) when the same maximum power is specified for multiple transmission modes in a frequency band, the largest channel bandwidth, lowest order modulation, lowest data rate and lowest order 802.11a/g/n/ac mode is used for SAR measurement, on the highest measured output power channel in the initial test configuration, for each frequency band or when MIMO mode was not performed, due to for each antenna, transmit power in SISO operation is larger than (or equal to) the power in MIMO operation, RF exposure compliance of MIMO mode can be deduced from the compliance simultaneous transmission of antennas operating in SISO mode. Additional output power measurements were not necessary.
4. Per KDB 248227 D01v02r02, SAR test reduction is determined according to 802.11 transmission mode configurations and certain exposure conditions with multiple test positions. In the 2.4 GHz band, separate SAR procedures are applied to DSSS and OFDM configurations to simplify DSSS test requirements. For OFDM, in both 2.4 and 5 GHz bands, an initial test configuration must be determined for each standalone and aggregated frequency band, according to the transmission mode configuration with the highest maximum output power specified for production units to perform SAR measurements. If the same highest maximum output power applies to different combinations of channel bandwidths, modulations and data rates, additional procedures are applied to determine which test configurations require SAR measurement. When applicable, an initial test position may be applied to reduce the number of SAR measurements required for next to the ear, UMPC mini-tablet or hotspot mode configurations with multiple test positions.
5. For 2.4 GHz 802.11b DSSS, either the initial test position procedure for multiple exposure test positions or the DSSS procedure for fixed exposure position is applied; these are mutually exclusive. For 2.4 GHz and 5 GHz OFDM configurations, the initial test configuration is applied to measure SAR using either the initial test position procedure for multiple exposure test position configurations or the initial test configuration procedures for fixed exposure test conditions. Based on the reported SAR of the measured configurations and maximum output power of the transmission mode configurations that are not included in the initial test configuration, the subsequent test configuration and initial test position procedures are applied to determine if SAR measurements are required for the remaining OFDM transmission configurations. In general, the number of test channels that require SAR measurement is minimized based on maximum output power measured for the test sample(s).
6. For OFDM transmission configurations in the 2.4 GHz and 5 GHz bands, When the same maximum power is specified for multiple transmission modes in a frequency band, the largest channel bandwidth, lowest order modulation, lowest data rate and lowest order 802.11a/g/n/ac mode is used for SAR measurement, on the highest measured output power channel for each frequency band.
7. DSSS and OFDM configurations are considered separately according to the required SAR procedures. SAR is measured in the initial test position using the 802.11 transmission mode configuration required by the DSSS procedure or initial test configuration and subsequent test configuration(s) according to the OFDM procedures.18 The initial test position procedure is described in the following:
 - a. When the reported SAR of the initial test position is $\leq 0.4\text{ W/kg}$, further SAR measurement is not required for the other test positions in that exposure configuration and 802.11 transmission mode combinations within the frequency band or aggregated band.
 - b. When the reported SAR of the test position is $> 0.4\text{ W/kg}$, SAR is repeated for the 802.11 transmission mode configuration tested in the initial test position to measure the subsequent next closet/smallest test separation distance and maximum coupling test position on the highest maximum output power channel, until the report SAR is $\leq 0.8\text{ W/kg}$ or all required test position are tested.
 - c. For all positions/configurations, when the reported SAR is $> 0.8\text{ W/kg}$, SAR is measured for these test positions/configurations on the subsequent next highest measured output power channel(s) until the reported SAR is $\leq 1.2\text{ W/kg}$ or all required channels are tested.

<2.4GHz WLAN>

2.4GHz WLAN				Ant 1			Ant 2			Ant 1+2		
2.4GHz WLAN	Mode	Channel	Frequency (MHz)	Average power (dBm)	Tune-Up Limit	Duty Cycle %	Average power (dBm)	Tune-Up Limit	Duty Cycle %	Average power (dBm)	Tune-Up Limit	Duty Cycle %
	802.11b 1Mbps	1	2412	17.10	17.50	98.65	17.00	17.50	99.04	Not required	20.50	Not required
		6	2437	17.30	17.50		17.20	17.50			20.50	
		11	2462	16.50	17.00		16.70	17.00			20.00	
	802.11g 6Mbps	1	2412	Not required	16.00	Not required	Not required	16.00	Not required		19.00	
		6	2437		19.50			19.50			22.50	
		11	2462		17.00			17.00			20.00	
	802.11n-HT20 MCS0	1	2412		15.00			15.00			18.00	
		6	2437		18.00			18.00			21.00	
		11	2462		16.00			16.00			19.00	
	802.11n-HT40 MCS0	3	2422		13.00			12.00			16.00	
		6	2437		13.00			13.00			16.00	
		9	2452		12.00			12.00			15.00	
	802.11ac-VHT20 MCS0	1	2412		15.00			15.00			18.00	
		6	2437		18.50			18.50			21.50	
		11	2462		16.00			16.00			19.00	
	802.11ac-VHT40 MCS0	3	2422		13.00			12.00			16.00	
		6	2437		13.00			13.00			16.00	
9		2452	12.00		12.00			15.00				

<5GHz WLAN>

5.2GHz WLAN				Ant 1			Ant 2			Ant 1+2							
5.2GHz WLAN	Mode	Channel	Frequency (MHz)	Average power (dBm)	Tune-Up Limit	Duty Cycle %	Average power (dBm)	Tune-Up Limit	Duty Cycle %	Average power (dBm)	Tune-Up Limit	Duty Cycle %					
	802.11a 6Mbps	36	5180	16.20	16.50	98.11	16.30	16.50	98.34	Not required	19.50	Not required					
		40	5200	16.20	16.50		16.20	16.50			19.50						
		44	5220	16.20	16.50		16.30	16.50			19.50						
		48	5240	16.20	16.50		16.20	16.50			19.50						
	802.11n-HT20 MCS0	36	5180	Not required	16.00	Not required	Not required	16.00	Not required		19.00						
		40	5200		16.00			16.00			19.00						
		44	5220		16.00			16.00			19.00						
		48	5240		16.00			16.00			19.00						
	802.11n-HT40 MCS0	38	5190		12.50			12.50			15.50		18.50				
		46	5230		15.50			15.50			18.50						
	802.11ac-VHT20 MCS0	36	5180		Not required			16.50			Not required		Not required	16.50	Not required	19.50	
		40	5200					16.50						16.50		19.50	
		44	5220					16.50						16.50		19.50	
		48	5240					16.50						16.50		19.50	
	802.11ac-VHT40 MCS0	38	5190					12.50						12.50		15.50	18.50
		46	5230					15.50						15.50		18.50	
802.11ac-VHT80 MCS0	42	5210	12.00					12.00						15.00			

5.3GHz WLAN				Ant 1			Ant 2			Ant 1+2		
5.3GHz WLAN	Mode	Channel	Frequency (MHz)	Average power (dBm)	Tune-Up Limit	Duty Cycle %	Average power (dBm)	Tune-Up Limit	Duty Cycle %	Average power (dBm)	Tune-Up Limit	Duty Cycle %
	802.11a 6Mbps	52	5260	16.20	16.50	98.11	16.20	16.50	98.34	Not required	19.50	Not required
		56	5280	16.20	16.50		16.20	16.50			19.50	
		60	5300	16.20	16.50		16.20	16.50			19.50	
		64	5320	16.00	16.50		16.10	16.50			19.50	
	802.11n-HT20 MCS0	52	5260	Not required	16.00	Not required	Not required	16.00	Not required		19.00	
		56	5280		16.00			16.00			19.00	
		60	5300		16.00			16.00			19.00	
		64	5320		16.00			16.00			19.00	
	802.11n-HT40 MCS0	54	5270		15.50			15.50			18.50	
		62	5310		12.00			12.00			15.00	
	802.11ac-VHT20 MCS0	52	5260		16.50			16.50			19.50	
		56	5280		16.50			16.50			19.50	
		60	5300		16.50			16.50			19.50	
		64	5320		16.50			16.50			19.50	
	802.11ac-VHT40 MCS0	54	5270		15.50			15.50			18.50	
		62	5310		12.00			12.00			15.00	
802.11ac-VHT80 MCS0	58	5290	12.50		12.50			15.50				

5.5GHz WLAN				Ant 1			Ant 2			Ant 1+2		
5.5GHz WLAN	Mode	Channel	Frequency (MHz)	Average power (dBm)	Tune-Up Limit	Duty Cycle %	Average power (dBm)	Tune-Up Limit	Duty Cycle %	Average power (dBm)	Tune-Up Limit	Duty Cycle %
	802.11a 6Mbps	100	5500	16.20	16.50	98.11	16.30	16.50	98.34	Not required	19.50	Not required
		116	5580	15.90	16.50		16.20	16.50			19.50	
		124	5620	16.00	16.50		16.10	16.50			19.50	
		132	5660	16.10	16.50		16.20	16.50			19.50	
		144	5720	16.10	16.50		16.30	16.50			19.50	
	802.11n-HT20 MCS0	100	5500	Not required	16.00	Not required	Not required	16.00	Not required		19.00	
		116	5580		16.00			16.00			19.00	
		124	5620		16.00			16.00			19.00	
		132	5660		16.00			16.00			19.00	
		144	5720		16.00			16.00			19.00	
	802.11n-HT40 MCS0	102	5510		13.50			13.50			16.50	
		110	5550		15.50			15.50			18.50	
		126	5630		15.50			15.50			18.50	
		134	5670		15.50			15.50			18.50	
	802.11ac-VHT20 MCS0	100	5500		16.50			16.50			19.50	
		116	5580		16.50			16.50			19.50	
		124	5620		16.50			16.50			19.50	
		132	5660		16.50			16.50			19.50	
		144	5720		16.50			16.50			19.50	
	802.11ac-VHT40 MCS0	102	5510		13.50			13.50			16.50	
		110	5550		15.50			15.50			18.50	
		126	5630		15.50			15.50			18.50	
		134	5670		15.50			15.50			18.50	
		142	5710		15.50			15.50			18.50	
802.11ac-VHT80 MCS0	106	5530	12.00		12.00			15.00				
	122	5610	15.50	15.50	18.50							
	138	5690	15.50	15.50	18.50							

5.8GHz WLAN				Ant 1			Ant 2			Ant 1+2												
	Mode	Channel	Frequency (MHz)	Average power (dBm)	Tune-Up Limit	Duty Cycle %	Average power (dBm)	Tune-Up Limit	Duty Cycle %	Average power (dBm)	Tune-Up Limit	Duty Cycle %										
5.8GHz WLAN	802.11a 6Mbps	149	5745	16.10	16.50	98.11	16.10	16.50	98.34	Not required	19.50	Not required										
		157	5785	16.20	16.50		16.00	16.50			19.50											
		165	5825	16.20	16.50		16.10	16.50			19.50											
	802.11n-HT20 MCS0	149	5745	Not required	16.00	Not required	Not required	16.00	Not required		19.00											
		157	5785		16.00			16.00			19.00											
		165	5825		16.00			16.00			19.00											
	802.11n-HT40 MCS0	151	5755		15.50			15.50			18.50											
		159	5795		15.50			15.50			18.50											
	802.11ac-VHT20 MCS0	149	5745		Not required			16.50			Not required		Not required	16.50	Not required	19.50						
		157	5785					16.50						16.50		19.50						
		165	5825					16.50						16.50		19.50						
	802.11ac-VHT40 MCS0	151	5755					15.50						15.50		18.50						
		159	5795					15.50						15.50		18.50						
	802.11ac-VHT80 MCS0	155	5775					15.50						15.50			18.50					

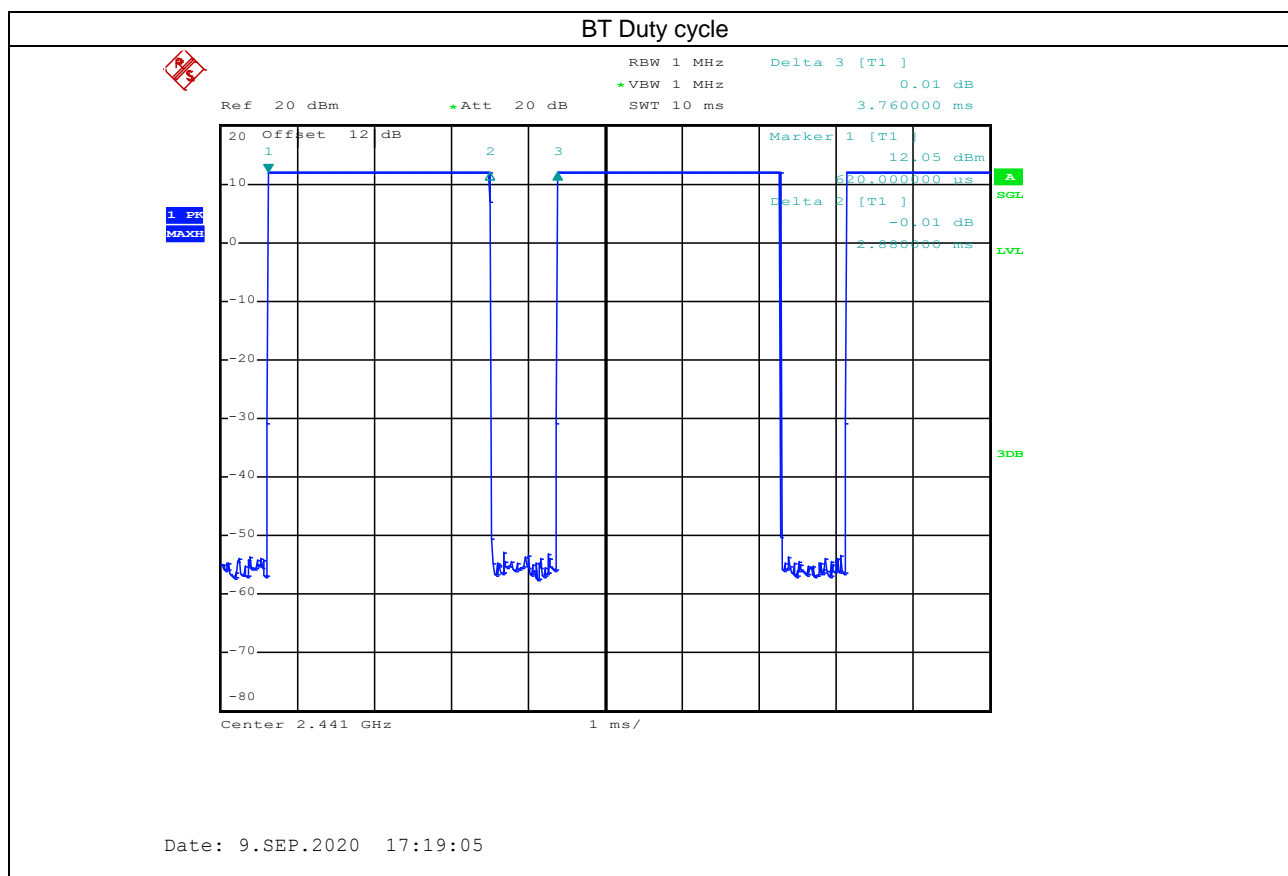
<2.4GHz Bluetooth>

Mode	Channel	Frequency (MHz)	Average power (dBm)		
			1Mbps	2Mbps	3Mbps
BR / EDR	CH 00	2402	12.64	10.50	10.57
	CH 39	2441	11.63	9.34	9.37
	CH 78	2480	12.36	10.38	10.43
Tune-up Limit			13.00	11.00	11.00

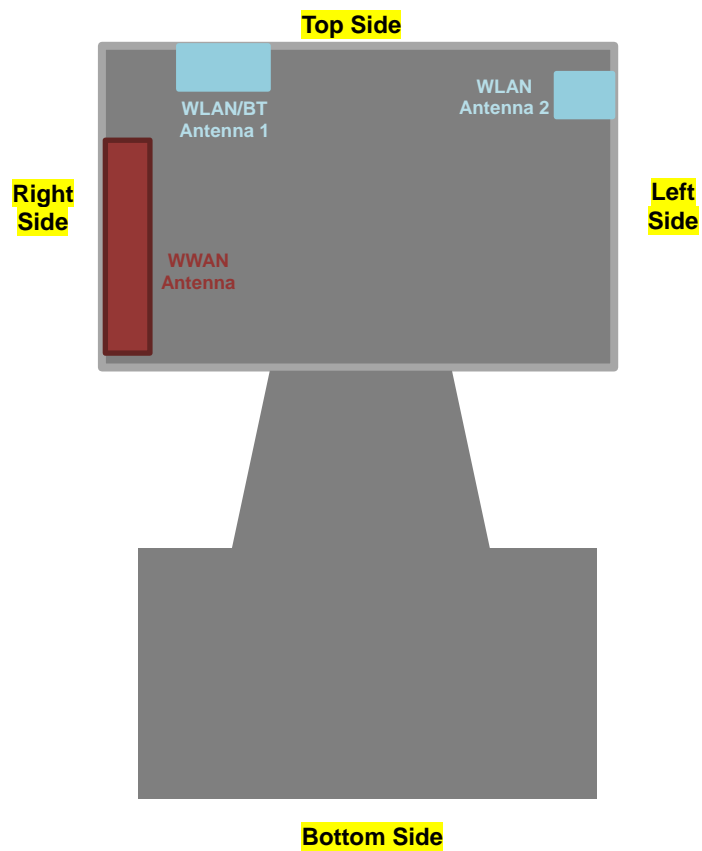
Mode	Channel	Frequency (MHz)	Average power (dBm)	
			1Mbps	2Mbps
LE	CH 00	2402	2.60	2.60
	CH 19	2440	1.40	1.30
	CH 39	2480	2.50	2.40
Tune-up Limit			3.00	3.00

General Note:

- For 2.4GHz Bluetooth SAR testing was selected 1Mbps due to its highest average power and duty cycle is **76.6%** considered in SAR testing, and the duty cycle would be scaled to theoretical 83.3% in reported SAR calculation.



11. Antenna Location



Back View

12. SAR Test Results

General Note:

1. Per KDB 447498 D01v06, the reported SAR is the measured SAR value adjusted for maximum tune-up tolerance.
 - a. Tune-up scaling Factor = tune-up limit power (mW) / EUT RF power (mW), where tune-up limit is the maximum rated power among all production units.
 - b. For SAR testing of WLAN signal with non-100% duty cycle, the measured SAR is scaled-up by the duty cycle scaling factor which is equal to "1/(duty cycle)"
 - c. For WLAN/Bluetooth: Reported SAR(W/kg)= Measured SAR(W/kg)* Duty Cycle scaling factor * Tune-up scaling factor
2. Per KDB 447498 D01v06, for each exposure position, testing of other required channels within the operating mode of a frequency band is not required when the *reported* 1-g or 10-g SAR for the mid-band or highest output power channel is:
 - ≤ 0.8 W/kg or 2.0 W/kg, for 1-g or 10-g respectively, when the transmission band is ≤ 100 MHz
 - ≤ 0.6 W/kg or 1.5 W/kg, for 1-g or 10-g respectively, when the transmission band is between 100 MHz and 200 MHz
 - ≤ 0.4 W/kg or 1.0 W/kg, for 1-g or 10-g respectively, when the transmission band is ≥ 200 MHz
3. Per KDB 865664 D01v01r04, for each frequency band, repeated SAR measurement is required only when the measured SAR is ≥ 0.8 W/kg.

WLAN Note:

1. Per KDB 248227 D01v02r02, for 2.4GHz 802.11g/n SAR testing is not required when the highest reported SAR for DSSS is adjusted by the ratio of OFDM to DSSS specified maximum output power and the adjusted SAR is ≤ 1.2 W/kg.
2. Per KDB 248227 D01v02r02, U-NII-1 SAR testing is not required when the U-NII-2A band highest reported SAR for a test configuration is ≤ 1.2 W/kg, SAR is not required for U-NII-1 band.
3. When the reported SAR of the test position is > 0.4 W/kg, SAR is repeated for the 802.11 transmission mode configuration tested in the initial test position to measure the subsequent next closet/smallest test separation distance and maximum coupling test position on the highest maximum output power channel, until the report SAR is ≤ 0.8 W/kg or all required test position are tested.
4. For all positions / configurations, when the reported SAR is > 0.8 W/kg, SAR is measured for these test positions / configurations on the subsequent next highest measured output power channel(s) until the reported SAR is ≤ 1.2 W/kg or all required channels are tested.
5. For WLAN SAR testing was performed on single antenna RF power in SISO mode is larger or equal to the single antenna RF power in MIMO mode, and for RF exposure assessment of MIMO mode simultaneous transmission exclusion analysis was performed with SAR test results of each antenna in SISO mode.
6. Per KDB 248227 D01v02r02, the simultaneous SAR provisions in KDB publication 447498 should be applied to determine simultaneous transmission SAR test exclusion for WiFi MIMO. If the sum of 1g single transmission chain SAR measurements is < 1.6 W/kg and SAR peak to location ratio ≤ 0.04 , no additional SAR measurements for MIMO.

**12.1 Body SAR****<WLAN SAR>**

Plot No.	Band	Mode	Test Position	Gap (mm)	Antenna	Ch.	Freq. (MHz)	Average Power (dBm)	Tune-Up Limit (dBm)	Tune-up Scaling Factor	Duty Cycle %	Duty Cycle Scaling Factor	Power Drift (dB)	Measured 1g SAR (W/kg)	Reported 1g SAR (W/kg)
1	WLAN2.4GHz	802.11b 1Mbps	Front	10mm	Ant 1	6	2437	17.30	17.50	1.047	98.65	1.014	0.01	0.119	0.126
	WLAN2.4GHz	802.11b 1Mbps	Front	10mm	Ant 1	1	2412	17.10	17.50	1.096	98.65	1.014	-0.11	0.125	0.139
	WLAN2.4GHz	802.11b 1Mbps	Front	10mm	Ant 1	11	2462	16.50	17.00	1.122	98.65	1.014	0.18	0.093	0.106
	WLAN2.4GHz	802.11b 1Mbps	Left Side	10mm	Ant 1	6	2437	17.30	17.50	1.047	98.65	1.014	-0.05	0.001	0.001
	WLAN2.4GHz	802.11b 1Mbps	Right Side	10mm	Ant 1	6	2437	17.30	17.50	1.047	98.65	1.014	0.06	0.060	0.064
	WLAN2.4GHz	802.11b 1Mbps	Top Side	10mm	Ant 1	6	2437	17.30	17.50	1.047	98.65	1.014	-0.16	0.079	0.084
	WLAN2.4GHz	802.11b 1Mbps	Front	10mm	Ant 2	6	2437	17.20	17.50	1.072	99.04	1.010	0.01	0.001	0.001
	WLAN2.4GHz	802.11b 1Mbps	Left Side	10mm	Ant 2	6	2437	17.20	17.50	1.072	99.04	1.010	-0.09	0.043	0.047
	WLAN2.4GHz	802.11b 1Mbps	Right Side	10mm	Ant 2	6	2437	17.20	17.50	1.072	99.04	1.010	0.01	0.001	0.001
	WLAN2.4GHz	802.11b 1Mbps	Top Side	10mm	Ant 2	6	2437	17.20	17.50	1.072	99.04	1.010	0.11	0.051	0.055
	WLAN2.4GHz	802.11b 1Mbps	Top Side	10mm	Ant 2	1	2412	17.00	17.50	1.122	99.04	1.010	-0.13	0.028	0.032
	WLAN2.4GHz	802.11b 1Mbps	Top Side	10mm	Ant 2	11	2462	16.70	17.00	1.072	99.04	1.010	0.05	0.037	0.040
2	WLAN5GHz	802.11a 6Mbps	Front	10mm	Ant 1	60	5300	16.20	16.50	1.072	98.11	1.019	0.05	0.077	0.084
	WLAN5GHz	802.11a 6Mbps	Left Side	10mm	Ant 1	60	5300	16.20	16.50	1.072	98.11	1.019	0	0.001	0.001
	WLAN5GHz	802.11a 6Mbps	Right Side	10mm	Ant 1	60	5300	16.20	16.50	1.072	98.11	1.019	0.13	0.037	0.040
	WLAN5GHz	802.11a 6Mbps	Top Side	10mm	Ant 1	60	5300	16.20	16.50	1.072	98.11	1.019	0.03	0.234	0.255
	WLAN5GHz	802.11a 6Mbps	Top Side	10mm	Ant 1	52	5260	16.20	16.50	1.072	98.11	1.019	0.15	0.222	0.242
	WLAN5GHz	802.11a 6Mbps	Top Side	10mm	Ant 1	56	5280	16.20	16.50	1.072	98.11	1.019	0.15	0.233	0.254
	WLAN5GHz	802.11a 6Mbps	Top Side	10mm	Ant 1	64	5320	16.00	16.50	1.122	98.11	1.019	-0.1	0.261	0.298
	WLAN5GHz	802.11a 6Mbps	Front	10mm	Ant 2	60	5300	16.20	16.50	1.072	98.34	1.017	0.1	0.071	0.077
	WLAN5GHz	802.11a 6Mbps	Left Side	10mm	Ant 2	60	5300	16.20	16.50	1.072	98.34	1.017	0.09	0.103	0.112
	WLAN5GHz	802.11a 6Mbps	Left Side	10mm	Ant 2	52	5260	16.20	16.50	1.072	98.34	1.017	0.13	0.094	0.102
	WLAN5GHz	802.11a 6Mbps	Left Side	10mm	Ant 2	56	5280	16.20	16.50	1.072	98.34	1.017	0.05	0.099	0.108
	WLAN5GHz	802.11a 6Mbps	Left Side	10mm	Ant 2	64	5320	16.10	16.50	1.096	98.34	1.017	0.01	0.094	0.105
	WLAN5GHz	802.11a 6Mbps	Right Side	10mm	Ant 2	60	5300	16.20	16.50	1.072	98.34	1.017	0.05	0.001	0.001
	WLAN5GHz	802.11a 6Mbps	Top Side	10mm	Ant 2	60	5300	16.20	16.50	1.072	98.34	1.017	0.11	0.030	0.033
	WLAN5GHz	802.11a 6Mbps	Front	10mm	Ant 1	100	5500	16.20	16.50	1.072	98.11	1.019	0.05	0.119	0.130
	WLAN5GHz	802.11a 6Mbps	Left Side	10mm	Ant 1	100	5500	16.20	16.50	1.072	98.11	1.019	0.07	0.001	0.001
	WLAN5GHz	802.11a 6Mbps	Right Side	10mm	Ant 1	100	5500	16.20	16.50	1.072	98.11	1.019	0.15	0.069	0.075
	WLAN5GHz	802.11a 6Mbps	Top Side	10mm	Ant 1	100	5500	16.20	16.50	1.072	98.11	1.019	0.03	0.291	0.318
	WLAN5GHz	802.11a 6Mbps	Top Side	10mm	Ant 1	116	5580	15.90	16.50	1.148	98.11	1.019	0.1	0.296	0.346
	WLAN5GHz	802.11a 6Mbps	Top Side	10mm	Ant 1	124	5620	16.00	16.50	1.122	98.11	1.019	0.1	0.313	0.358
	WLAN5GHz	802.11a 6Mbps	Top Side	10mm	Ant 1	132	5660	16.10	16.50	1.096	98.11	1.019	0.04	0.393	0.439
	WLAN5GHz	802.11a 6Mbps	Top Side	10mm	Ant 1	144	5720	16.10	16.50	1.096	98.11	1.019	0.09	0.375	0.419
	WLAN5GHz	802.11a 6Mbps	Front	10mm	Ant 2	100	5500	16.30	16.50	1.047	98.34	1.017	0.06	0.065	0.069
	WLAN5GHz	802.11a 6Mbps	Left Side	10mm	Ant 2	100	5500	16.30	16.50	1.047	98.34	1.017	0.04	0.136	0.145
	WLAN5GHz	802.11a 6Mbps	Left Side	10mm	Ant 2	116	5580	16.20	16.50	1.072	98.34	1.017	0.02	0.158	0.172
	WLAN5GHz	802.11a 6Mbps	Left Side	10mm	Ant 2	124	5620	16.10	16.50	1.096	98.34	1.017	0.08	0.126	0.141
	WLAN5GHz	802.11a 6Mbps	Left Side	10mm	Ant 2	132	5660	16.20	16.50	1.072	98.34	1.017	0.15	0.145	0.158
	WLAN5GHz	802.11a 6Mbps	Left Side	10mm	Ant 2	144	5720	16.30	16.50	1.047	98.34	1.017	0.11	0.119	0.127
	WLAN5GHz	802.11a 6Mbps	Right Side	10mm	Ant 2	100	5500	16.30	16.50	1.047	98.34	1.017	0.03	0.001	0.001
	WLAN5GHz	802.11a 6Mbps	Top Side	10mm	Ant 2	100	5500	16.30	16.50	1.047	98.34	1.017	0.04	0.058	0.062

Plot No.	Band	Mode	Test Position	Gap (mm)	Antenna	Ch.	Freq. (MHz)	Average Power (dBm)	Tune-Up Limit (dBm)	Tune-up Scaling Factor	Duty Cycle %	Duty Cycle Scaling Factor	Power Drift (dB)	Measured 1g SAR (W/kg)	Reported 1g SAR (W/kg)
	WLAN5GHz	802.11a 6Mbps	Front	10mm	Ant 1	157	5785	16.20	16.50	1.072	98.11	1.019	0.06	0.095	0.104
	WLAN5GHz	802.11a 6Mbps	Left Side	10mm	Ant 1	157	5785	16.20	16.50	1.072	98.11	1.019	0.11	0.001	0.001
	WLAN5GHz	802.11a 6Mbps	Right Side	10mm	Ant 1	157	5785	16.20	16.50	1.072	98.11	1.019	0.01	0.059	0.064
	WLAN5GHz	802.11a 6Mbps	Top Side	10mm	Ant 1	157	5785	16.20	16.50	1.072	98.11	1.019	0.04	0.310	0.338
	WLAN5GHz	802.11a 6Mbps	Top Side	10mm	Ant 1	149	5745	16.10	16.50	1.096	98.11	1.019	0.16	0.295	0.330
4	WLAN5GHz	802.11a 6Mbps	Top Side	10mm	Ant 1	165	5825	16.20	16.50	1.072	98.11	1.019	-0.04	0.317	0.346
	WLAN5GHz	802.11a 6Mbps	Front	10mm	Ant 2	149	5745	16.10	16.50	1.096	98.34	1.017	0.11	0.042	0.047
	WLAN5GHz	802.11a 6Mbps	Left Side	10mm	Ant 2	149	5745	16.10	16.50	1.096	98.34	1.017	0.07	0.098	0.109
	WLAN5GHz	802.11a 6Mbps	Left Side	10mm	Ant 2	157	5785	16.00	16.50	1.122	98.34	1.017	0.08	0.089	0.102
	WLAN5GHz	802.11a 6Mbps	Left Side	10mm	Ant 2	165	5825	16.10	16.50	1.096	98.34	1.017	0.02	0.109	0.122
	WLAN5GHz	802.11a 6Mbps	Right Side	10mm	Ant 2	149	5745	16.10	16.50	1.096	98.34	1.017	0.02	0.001	0.001
	WLAN5GHz	802.11a 6Mbps	Top Side	10mm	Ant 2	149	5745	16.10	16.50	1.096	98.34	1.017	0.09	0.043	0.048

<Bluetooth SAR>

Plot No.	Band	Mode	Test Position	Gap (mm)	Antenna	Ch.	Freq. (MHz)	Average Power (dBm)	Tune-Up Limit (dBm)	Tune-up Scaling Factor	Duty Cycle %	Duty Cycle Scaling Factor	Power Drift (dB)	Measured 1g SAR (W/kg)	Reported 1g SAR (W/kg)
	Bluetooth	1Mbps	Front	10mm	Ant 1	0	2402	12.64	13.00	1.086	76.6	1.087	-0.13	0.031	0.037
5	Bluetooth	1Mbps	Front	10mm	Ant 1	39	2441	11.63	13.00	1.371	76.6	1.087	0.12	0.029	0.043
	Bluetooth	1Mbps	Front	10mm	Ant 1	78	2480	12.36	13.00	1.159	76.6	1.087	-0.17	0.027	0.034
	Bluetooth	1Mbps	Left Side	10mm	Ant 1	0	2402	12.64	13.00	1.086	76.6	1.087	-0.05	0.002	0.002
	Bluetooth	1Mbps	Right Side	10mm	Ant 1	0	2402	12.64	13.00	1.086	76.6	1.087	-0.03	0.013	0.015
	Bluetooth	1Mbps	Top Side	10mm	Ant 1	0	2402	12.64	13.00	1.086	76.6	1.087	-0.04	0.020	0.024

12.2 Extremity SAR

<WLAN SAR>

Plot No.	Band	Mode	Test Position	Gap (mm)	Antenna	Ch.	Freq. (MHz)	Average Power (dBm)	Tune-Up Limit (dBm)	Tune-up Scaling Factor	Duty Cycle %	Duty Cycle Scaling Factor	Power Drift (dB)	Measured 10g SAR (W/kg)	Reported 10g SAR (W/kg)
	WLAN2.4GHz	802.11b 1Mbps	Back	0mm	Ant 1	6	2437	17.30	17.50	1.047	98.65	1.014	0.01	0.097	0.103
6	WLAN2.4GHz	802.11b 1Mbps	Back	0mm	Ant 1	1	2412	17.10	17.50	1.096	98.65	1.014	-0.06	0.097	0.108
	WLAN2.4GHz	802.11b 1Mbps	Back	0mm	Ant 1	11	2462	16.50	17.00	1.122	98.65	1.014	-0.09	0.075	0.085
	WLAN2.4GHz	802.11b 1Mbps	Back	0mm	Ant 2	6	2437	17.20	17.50	1.072	99.04	1.010	-0.05	0.053	0.057
	WLAN2.4GHz	802.11b 1Mbps	Back	0mm	Ant 2	1	2412	17.00	17.50	1.122	99.04	1.010	0.08	0.037	0.042
	WLAN2.4GHz	802.11b 1Mbps	Back	0mm	Ant 2	11	2462	16.70	17.00	1.072	99.04	1.010	0.11	0.040	0.043

Plot No.	Band	Mode	Test Position	Gap (mm)	Antenna	Ch.	Freq. (MHz)	Average Power (dBm)	Tune-Up Limit (dBm)	Tune-up Scaling Factor	Duty Cycle %	Duty Cycle Scaling Factor	Power Drift (dB)	Measured 10g SAR (W/kg)	Reported 10g SAR (W/kg)
	WLAN5GHz	802.11a 6Mbps	Back	0mm	Ant 1	60	5300	16.20	16.50	1.072	98.11	1.019	0.04	0.231	0.252
	WLAN5GHz	802.11a 6Mbps	Back	0mm	Ant 1	52	5260	16.20	16.50	1.072	98.11	1.019	0.07	0.226	0.247
	WLAN5GHz	802.11a 6Mbps	Back	0mm	Ant 1	56	5280	16.20	16.50	1.072	98.11	1.019	0.08	0.222	0.242
7	WLAN5GHz	802.11a 6Mbps	Back	0mm	Ant 1	64	5320	16.00	16.50	1.122	98.11	1.019	-0.02	0.228	0.261
	WLAN5GHz	802.11a 6Mbps	Back	0mm	Ant 2	60	5300	16.20	16.50	1.072	98.34	1.017	0.04	0.046	0.050
	WLAN5GHz	802.11a 6Mbps	Back	0mm	Ant 2	52	5260	16.20	16.50	1.072	98.34	1.017	0.13	0.042	0.046
	WLAN5GHz	802.11a 6Mbps	Back	0mm	Ant 2	56	5280	16.20	16.50	1.072	98.34	1.017	0.06	0.045	0.049
	WLAN5GHz	802.11a 6Mbps	Back	0mm	Ant 2	64	5320	16.10	16.50	1.096	98.34	1.017	0.17	0.049	0.055
	WLAN5GHz	802.11a 6Mbps	Back	0mm	Ant 1	100	5500	16.20	16.50	1.072	98.11	1.019	0.07	0.204	0.223
	WLAN5GHz	802.11a 6Mbps	Back	0mm	Ant 1	116	5580	15.90	16.50	1.148	98.11	1.019	0.04	0.209	0.245
	WLAN5GHz	802.11a 6Mbps	Back	0mm	Ant 1	124	5620	16.00	16.50	1.122	98.11	1.019	0.03	0.216	0.247
	WLAN5GHz	802.11a 6Mbps	Back	0mm	Ant 1	132	5660	16.10	16.50	1.096	98.11	1.019	0.14	0.265	0.296
8	WLAN5GHz	802.11a 6Mbps	Back	0mm	Ant 1	144	5720	16.10	16.50	1.096	98.11	1.019	-0.04	0.269	0.301
	WLAN5GHz	802.11a 6Mbps	Back	0mm	Ant 2	100	5500	16.30	16.50	1.047	98.34	1.017	0.1	0.062	0.066
	WLAN5GHz	802.11a 6Mbps	Back	0mm	Ant 2	116	5580	16.20	16.50	1.072	98.34	1.017	0.02	0.066	0.072
	WLAN5GHz	802.11a 6Mbps	Back	0mm	Ant 2	124	5620	16.10	16.50	1.096	98.34	1.017	0.06	0.062	0.069
	WLAN5GHz	802.11a 6Mbps	Back	0mm	Ant 2	132	5660	16.20	16.50	1.072	98.34	1.017	0.04	0.065	0.071
	WLAN5GHz	802.11a 6Mbps	Back	0mm	Ant 2	144	5720	16.30	16.50	1.047	98.34	1.017	0.02	0.051	0.054
	WLAN5GHz	802.11a 6Mbps	Back	0mm	Ant 1	157	5785	16.20	16.50	1.072	98.11	1.019	0.14	0.208	0.227
	WLAN5GHz	802.11a 6Mbps	Back	0mm	Ant 1	149	5745	16.10	16.50	1.096	98.11	1.019	0.16	0.198	0.221
9	WLAN5GHz	802.11a 6Mbps	Back	0mm	Ant 1	165	5825	16.20	16.50	1.072	98.11	1.019	-0.02	0.218	0.238
	WLAN5GHz	802.11a 6Mbps	Back	0mm	Ant 2	149	5745	16.10	16.50	1.096	98.34	1.017	0.16	0.038	0.042
	WLAN5GHz	802.11a 6Mbps	Back	0mm	Ant 2	157	5785	16.00	16.50	1.122	98.34	1.017	0.15	0.035	0.040
	WLAN5GHz	802.11a 6Mbps	Back	0mm	Ant 2	165	5825	16.10	16.50	1.096	98.34	1.017	-0.02	0.042	0.047

<Bluetooth SAR>

Plot No.	Band	Mode	Test Position	Gap (mm)	Antenna	Ch.	Freq. (MHz)	Average Power (dBm)	Tune-Up Limit (dBm)	Tune-up Scaling Factor	Duty Cycle %	Duty Cycle Scaling Factor	Power Drift (dB)	Measured 10g SAR (W/kg)	Reported 10g SAR (W/kg)
	Bluetooth	1Mbps	Back	0mm	Ant 1	0	2402	12.64	13.00	1.086	76.6	1.087	-0.11	0.024	0.028
10	Bluetooth	1Mbps	Back	0mm	Ant 1	39	2441	11.63	13.00	1.371	76.6	1.087	-0.09	0.022	0.033
	Bluetooth	1Mbps	Back	0mm	Ant 1	78	2480	12.36	13.00	1.159	76.6	1.087	-0.12	0.025	0.031

13. Simultaneous Transmission Analysis

NO.	Simultaneous Transmission Configurations	Support
1.	WLAN2.4GHz Ant 1+2	Yes
2.	WLAN2.4GHz Ant2 + Bluetooth Ant1	Yes
3.	WLAN2.4GHz Ant1 + WLAN5GHz Ant2	Yes
4.	WLAN5GHz Ant2 + Bluetooth Ant1	Yes
5.	WLAN5GHz Ant 1+2	Yes

General Note:

1. TWLAN RF exposure assessment of MIMO mode simultaneous transmission exclusion analysis was performed with SAR test results of each antenna in SISO mode. Therefore SPLSR calculation was choose worst case with SAR test results of each antenna in SISO mode perform evaluation.
2. For SAR testing was performed on single antenna RF power in SISO mode is larger or equal to the single antenna RF power in MIMO mode, and for RF exposure assessment of MIMO mode simultaneous transmission exclusion analysis was performed with SAR test results of each antenna in SISO mode.
3. The Scaled SAR summation is calculated based on the same configuration and test position.
4. Per KDB 447498 D01v06, simultaneous transmission SAR is compliant if,
 - i) Scalar SAR summation < 1.6W/kg.
 - ii) $SPLSR = (SAR1 + SAR2)^{1.5} / (\min. \text{ separation distance, mm})$, and the peak separation distance is determined from the square root of $[(x1-x2)^2 + (y1-y2)^2 + (z1-z2)^2]$, where (x1, y1, z1) and (x2, y2, z2) are the coordinates of the extrapolated peak SAR locations in the zoom scan.
 - iii) If $SPLSR \leq 0.04$, simultaneously transmission SAR measurement is not necessary.
 - iv) Simultaneously transmission SAR measurement, and the reported multi-band SAR < 1.6W/kg.

13.1 Body Exposure Conditions

Exposure Position	1	2	3	4	5	1+2 Summed 1g SAR (W/kg)	2+5 Summed 1g SAR (W/kg)	1+4 Summed 1g SAR (W/kg)	4+5 Summed 1g SAR (W/kg)	3+4 Summed 1g SAR (W/kg)
	2.4GHz WLAN Ant 1 1g SAR (W/kg)	2.4GHz WLAN Ant 2 1g SAR (W/kg)	5GHz WLAN Ant 1 1g SAR (W/kg)	5GHz WLAN Ant 2 1g SAR (W/kg)	Bluetooth Ant 1 1g SAR (W/kg)					
Front	0.139	0.001	0.130	0.077	0.043	0.140	0.044	0.216	0.120	0.207
Left side	0.001	0.047	0.001	0.172	0.002	0.048	0.049	0.173	0.174	0.173
Right side	0.064	0.001	0.075	0.001	0.015	0.065	0.016	0.065	0.016	0.076
Top side	0.084	0.055	0.439	0.062	0.024	0.139	0.079	0.146	0.086	0.501

13.2 Extremity Exposure Conditions

Exposure Position	1	2	3	4	5	1+2 Summed 10g SAR (W/kg)	2+5 Summed 10g SAR (W/kg)	1+4 Summed 10g SAR (W/kg)	4+5 Summed 10g SAR (W/kg)	3+4 Summed 10g SAR (W/kg)
	2.4GHz WLAN Ant 1 10g SAR (W/kg)	2.4GHz WLAN Ant 2 10g SAR (W/kg)	5GHz WLAN Ant 1 10g SAR (W/kg)	5GHz WLAN Ant 2 10g SAR (W/kg)	Bluetooth Ant 1 10g SAR (W/kg)					
Back	0.108	0.057	0.301	0.072	0.033	0.165	0.090	0.180	0.105	0.373

\

Test Engineer : Jay Jian, Mood Huang, and Randy Lin

14. Uncertainty Assessment

Per KDB 865664 D01 SAR measurement 100MHz to 6GHz, when the highest measured 1-g SAR within a frequency band is < 1.5 W/kg and the measured 10-g SAR within a frequency band is < 3.75 W/kg. The expanded SAR measurement uncertainty must be $\leq 30\%$, for a confidence interval of $k = 2$. If these conditions are met, extensive SAR measurement uncertainty analysis described in IEEE Std 1528-2013 is not required in SAR reports submitted for equipment approval. For this device, the highest measured 1-g SAR is less 1.5W/kg and highest measured 10-g SAR is less 3.75W/kg. Therefore, the measurement uncertainty table is not required in this report.

Declaration of Conformity:

The test results with all measurement uncertainty excluded is presented in accordance with the regulation limits or requirements declared by manufacturers.

Comments and Explanations:

The declared of product specification for EUT presented in the report are provided by the manufacturer, and the manufacturer takes all the responsibilities for the accuracy of product specification.

15. References

- [1] FCC 47 CFR Part 2 "Frequency Allocations and Radio Treaty Matters; General Rules and Regulations"
- [2] ANSI/IEEE Std. C95.1-1992, "IEEE Standard for Safety Levels with Respect to Human Exposure to Radio Frequency Electromagnetic Fields, 3 kHz to 300 GHz", September 1992
- [3] IEEE Std. 1528-2013, "IEEE Recommended Practice for Determining the Peak Spatial-Average Specific Absorption Rate (SAR) in the Human Head from Wireless Communications Devices: Measurement Techniques", Sep 2013
- [4] SPEAG DASY System Handbook
- [5] FCC KDB 248227 D01 v02r02, "SAR Guidance for IEEE 802.11 (WiFi) Transmitters", Oct 2015.
- [6] FCC KDB 447498 D01 v06, "Mobile and Portable Device RF Exposure Procedures and Equipment Authorization Policies", Oct 2015
- [7] FCC KDB 865664 D01 v01r04, "SAR Measurement Requirements for 100 MHz to 6 GHz", Aug 2015.
- [8] FCC KDB 865664 D02 v01r02, "RF Exposure Compliance Reporting and Documentation Considerations" Oct 2015.