

Itronix Corporation FCC ID: KBCIX260A750MPIBT

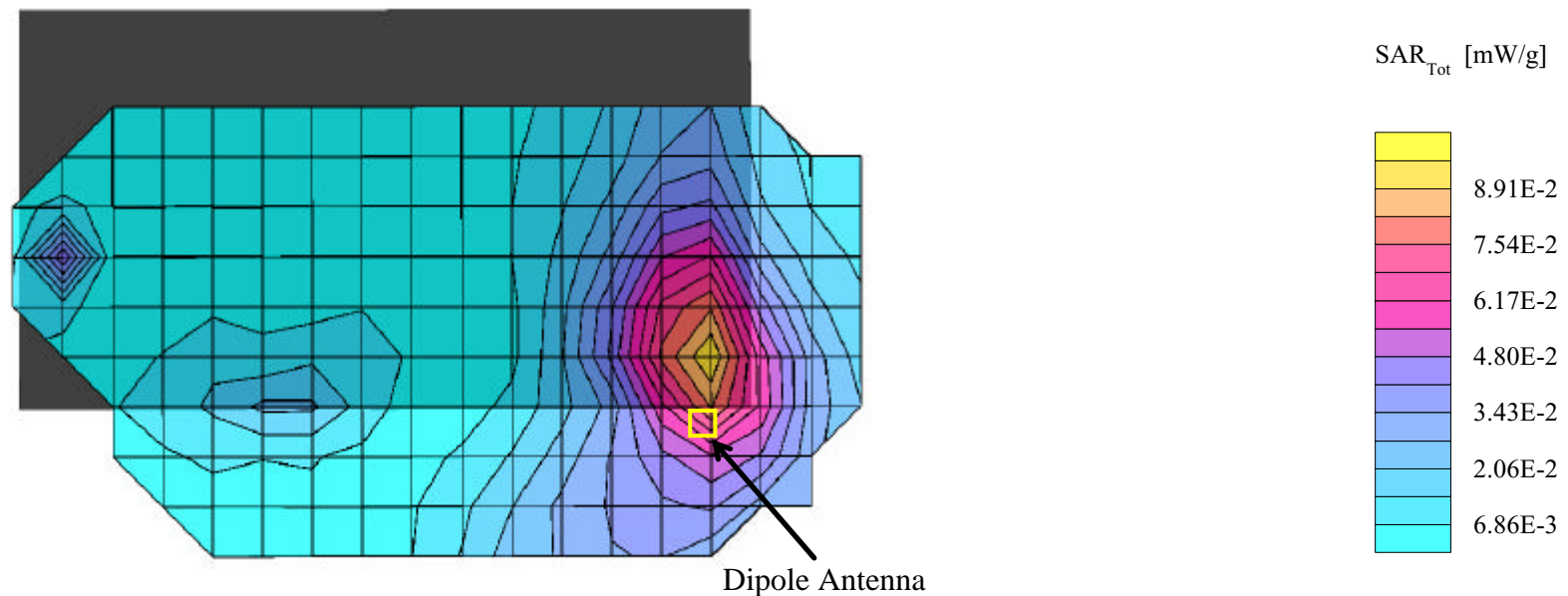
SAM Phantom; Flat Section; Position: (0°,0°)
Probe: ET3DV6 - SN1387; ConvF(4.90,4.90,4.90); Crest factor: 2.0
1900 MHz Muscle: $\sigma = 1.55$ mho/m $\epsilon_r = 51.1$ $\rho = 1.00$ g/cm³
Coarse: Dx = 15.0, Dy = 15.0, Dz = 10.0
Cube 5x5x7
SAR (1g): 0.0837 mW/g, SAR (10g): 0.0502 mW/g

Body SAR - Bottom of Laptop PC (LCD Display Closed) - Antenna Perpendicular to Planar Phantom (Extended Position)
0.0 cm Separation Distance from Bottom of Laptop PC to Planar Phantom

Itronix IX260 Rugged Laptop PC
with Sierra Wireless AirCard 750 PCS GSM/GPRS Modem Card
co-located with Cisco MPI-350 Mini-PCI DSSS WLAN Card
PCS GPRS Mode

Single Transmit - PCS GPRS only

Channel 661 [1880.00 MHz]
Conducted Power: 27.9 dBm
Ambient Temp: 22.8°C; Fluid Temp: 23.1°C
Date Tested: March 24, 2003



Itronix Corporation FCC ID: KBCIX260A750MPIBT

SAM Phantom; Flat Section; Position: (0°,0°)
 Probe: ET3DV6 - SN1387; ConvF(4.90,4.90,4.90); Crest factor: 2.0
 1900 MHz Muscle: $\sigma = 1.55$ mho/m $\epsilon_r = 51.1$ $\rho = 1.00$ g/cm³
 Coarse: Dx = 15.0, Dy = 15.0, Dz = 10.0

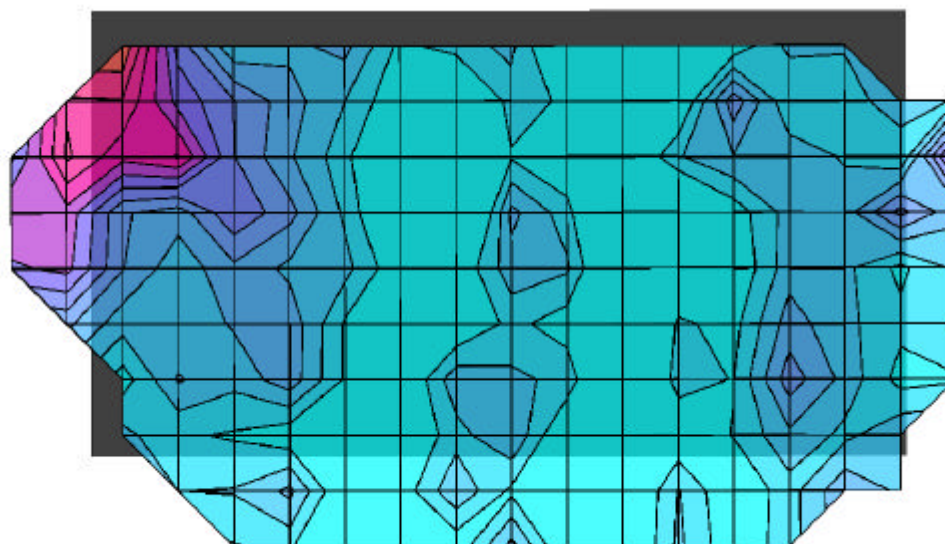
Body SAR - Bottom of Laptop PC (LCD Display Closed) - Antenna Perpendicular to Planar Phantom (Extended Position)
 0.0 cm Separation Distance from Bottom of Laptop PC to Planar Phantom

Itronix IX260 Rugged Laptop PC
 with Sierra Wireless AirCard 750 PCS GSM/GPRS Modem Card
 co-located with Cisco MPI-350 Mini-PCI DSSS WLAN Card
 PCS GPRS Mode

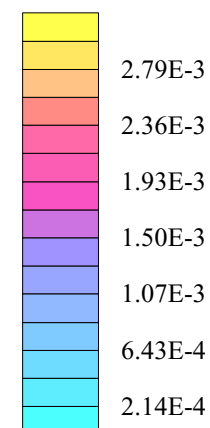
Single Transmit - PCS GPRS only

Channel 661 [1880.00 MHz]
 Conducted Power: 27.9 dBm
 Ambient Temp: 22.8°C; Fluid Temp: 23.1°C
 Date Tested: March 24, 2003

Coarse scan to show Left Half of Bottom Side



SAR_{Tot} [mW/g]

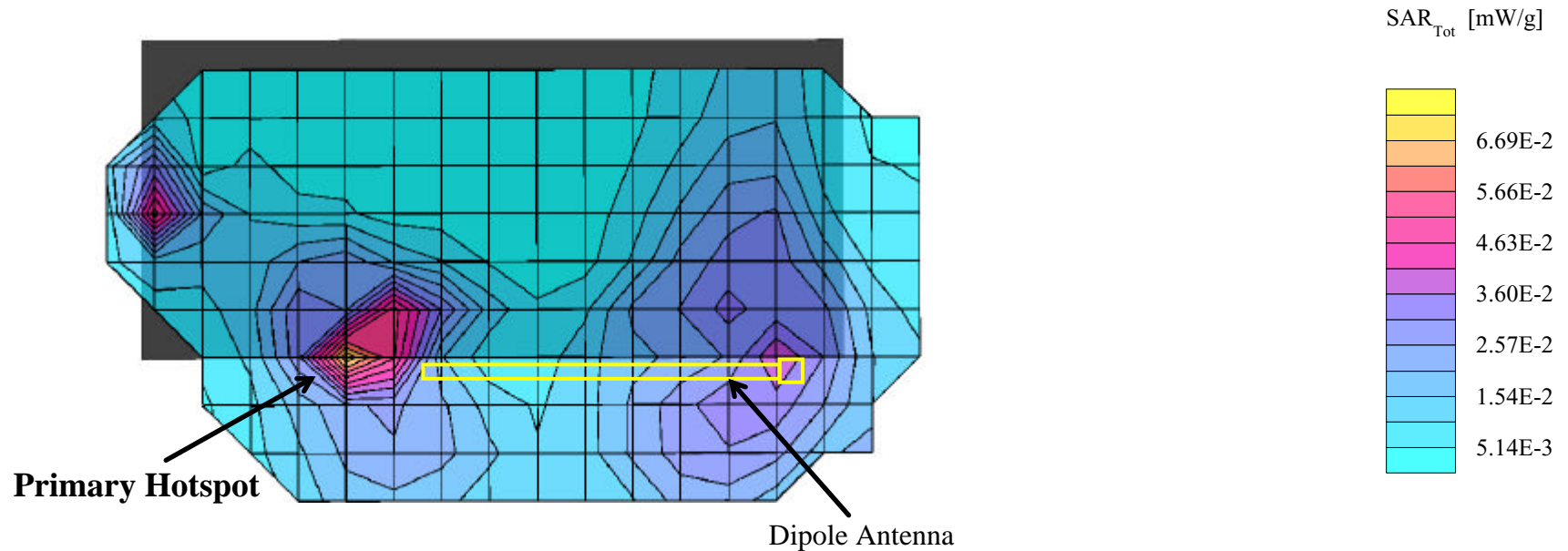


Itronix Corporation FCC ID: KBCIX260A750MPIBT

SAM Phantom; Flat Section; Position: (0°,0°)
 Probe: ET3DV6 - SN1387; ConvF(4.90,4.90,4.90); Crest factor: 2.0
 1900 MHz Muscle: $\sigma = 1.55$ mho/m $\epsilon_r = 51.1$ $\rho = 1.00$ g/cm³
 Coarse: Dx = 15.0, Dy = 15.0, Dz = 10.0
 Cube 5x5x7
 SAR (1g): 0.0828 mW/g, SAR (10g): 0.0413 mW/g

Body SAR - Bottom of Laptop PC (LCD Display Closed) - Antenna Parallel to Planar Phantom (Stowed Position)
 0.0 cm Separation Distance from Bottom of Laptop PC to Planar Phantom
 Itronix IX260 Rugged Laptop PC
 with Sierra Wireless AirCard 750 PCS GSM/GPRS Modem Card
 co-located with Cisco MPI-350 Mini-PCI DSSS WLAN Card
 PCS GPRS Mode
Simultaneous Transmit with co-located DSSS WLAN Card
 Channel 661 [1880.00 MHz]
 Conducted Power: 27.9 dBm
 Ambient Temp: 22.8°C; Fluid Temp: 23.1°C
 Date Tested: March 24, 2003

Primary Hotspot Evaluation



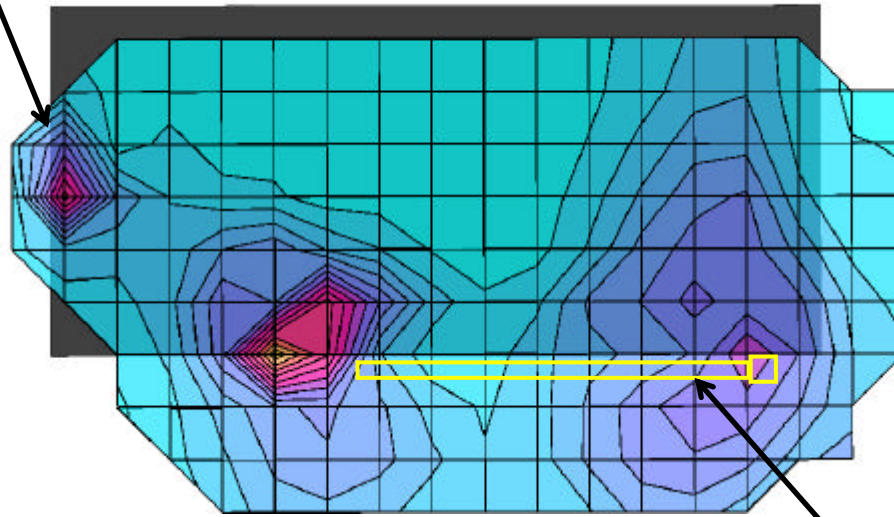
Itronix Corporation FCC ID: KBCIX260A750MPIBT

SAM Phantom; Flat Section; Position: (0°,0°)
 Probe: ET3DV6 - SN1387; ConvF(4.90,4.90,4.90); Crest factor: 2.0
 1900 MHz Muscle: $\sigma = 1.55$ mho/m $\epsilon_r = 51.1$ $\rho = 1.00$ g/cm³
 Coarse: Dx = 15.0, Dy = 15.0, Dz = 10.0
 Cube 5x5x7
 SAR (1g): 0.0706 mW/g, SAR (10g): 0.0284 mW/g

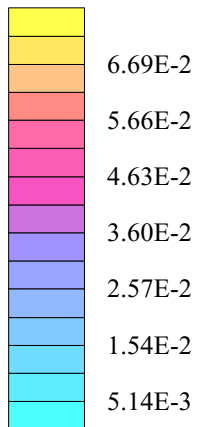
Body SAR - Bottom of Laptop PC (LCD Display Closed) - Antenna Parallel to Planar Phantom (Stowed Position)
 0.0 cm Separation Distance from Bottom of Laptop PC to Planar Phantom
 Itronix IX260 Rugged Laptop PC
 with Sierra Wireless AirCard 750 PCS GSM/GPRS Modem Card
 co-located with Cisco MPI-350 Mini-PCI DSSS WLAN Card
 PCS GPRS Mode
Simultaneous Transmit with co-located DSSS WLAN Card
 Channel 661 [1880.00 MHz]
 Conducted Power: 27.9 dBm
 Ambient Temp: 22.8°C; Fluid Temp: 23.1°C
 Date Tested: March 24, 2003

Secondary Hotspot Evaluation

Secondary Hotspot



SAR_{Tot} [mW/g]



Dipole Antenna

Itronix Corporation FCC ID: KBCIX260A750MPIBT

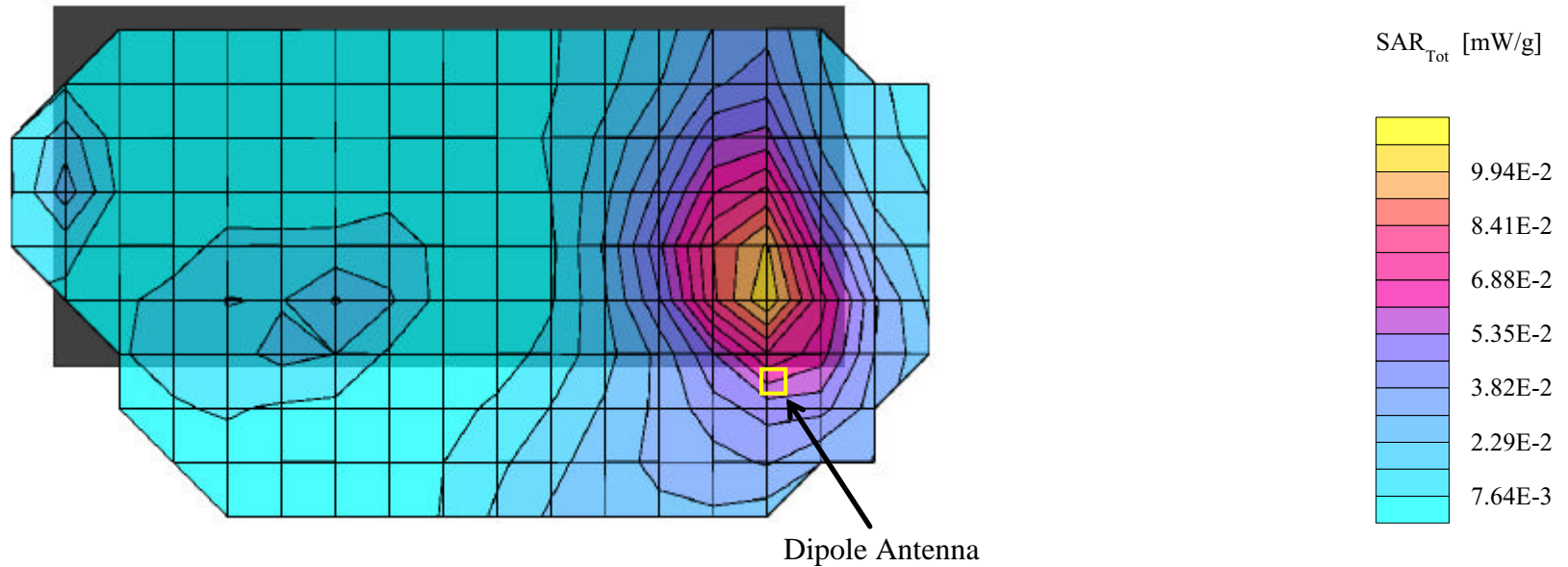
SAM Phantom; Flat Section; Position: (0°,0°)
 Probe: ET3DV6 - SN1387; ConvF(4.90,4.90,4.90); Crest factor: 2.0
 1900 MHz Muscle: $\sigma = 1.55$ mho/m $\epsilon_r = 51.1$ $\rho = 1.00$ g/cm³
 Coarse: Dx = 15.0, Dy = 15.0, Dz = 10.0
 Cube 5x5x7
 SAR (1g): 0.104 mW/g, SAR (10g): 0.0624 mW/g

Body SAR - Bottom of Laptop PC (LCD Display Closed) - Antenna Perpendicular to Planar Phantom (Extended Position)
 0.0 cm Separation Distance from Bottom of Laptop PC to Planar Phantom

Itronix IX260 Rugged Laptop PC
 with Sierra Wireless AirCard 750 PCS GSM/GPRS Modem Card
 co-located with Cisco MPI-350 Mini-PCI DSSS WLAN Card
 PCS GPRS Mode

Simultaneous Transmit with co-located DSSS WLAN Card

Channel 661 [1880.00 MHz]
 Conducted Power: 27.9 dBm
 Ambient Temp: 22.8°C; Fluid Temp: 23.1°C
 Date Tested: March 24, 2003



Itronix Corporation FCC ID: KBCIX260A750MPIBT

SAM Phantom; Flat Section; Position: (0°,0°)
Probe: ET3DV6 - SN1387; ConvF(4.90,4.90,4.90); Crest factor: 2.0
1900 MHz Muscle: $\sigma = 1.55$ mho/m $\epsilon_r = 51.1$ $\rho = 1.00$ g/cm³
Coarse: Dx = 15.0, Dy = 15.0, Dz = 10.0

Body SAR - Bottom of Laptop PC (LCD Display Closed) - Antenna Perpendicular to Planar Phantom (Extended Position)

0.0 cm Separation Distance from Bottom of Laptop PC to Planar Phantom

Itronix IX260 Rugged Laptop PC

with Sierra Wireless AirCard 750 PCS GSM/GPRS Modem Card

co-located with Cisco MPI-350 Mini-PCI DSSS WLAN Card

PCS GPRS Mode

Simultaneous Transmit with co-located DSSS WLAN Card

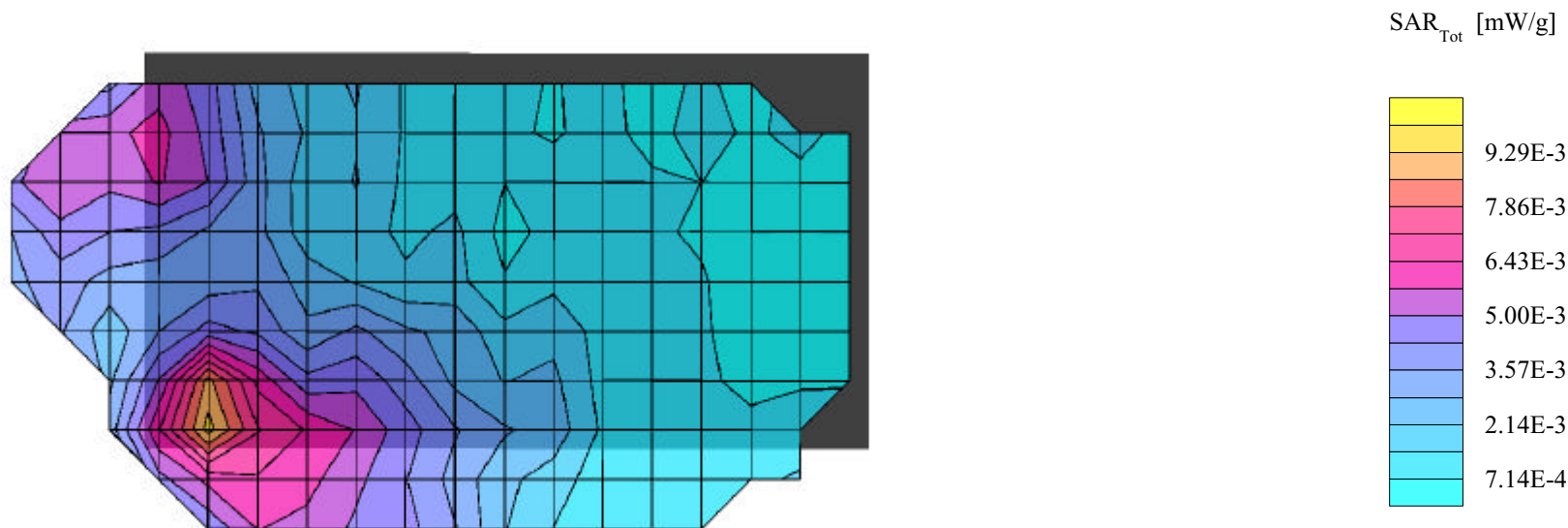
Channel 661 [1880.00 MHz]

Conducted Power: 27.9 dBm

Ambient Temp: 22.8°C; Fluid Temp: 23.1°C

Date Tested: March 24, 2003

Coarse scan to show Left Half of Bottom Side



Itronix Corporation FCC ID: KBCIX260A750MPIBT

SAM Phantom; Flat Section; Position: (90°,0°)

Probe: ET3DV6 - SN1387; ConvF(4.90,4.90,4.90); Crest factor: 2.0

1900 MHz Muscle: $\sigma = 1.55$ mho/m $\epsilon_r = 51.1$ $\rho = 1.00$ g/cm³

Coarse: Dx = 15.0, Dy = 15.0, Dz = 10.0

Cube 5x5x7

SAR (1g): 0.756 mW/g, SAR (10g): 0.426 mW/g

Body SAR - Right Side of LCD Display (Closed) - Antenna Parallel to Planar Phantom (Stowed Position)

1.5 cm Separation Distance from Dipole Antenna to Planar Phantom

Itronix IX260 Rugged Laptop PC

with Sierra Wireless AirCard 750 PCS GSM/GPRS Modem Card

co-located with Cisco MPI-350 Mini-PCI DSSS WLAN Card

PCS GPRS Mode

Single Transmit - PCS GPRS only

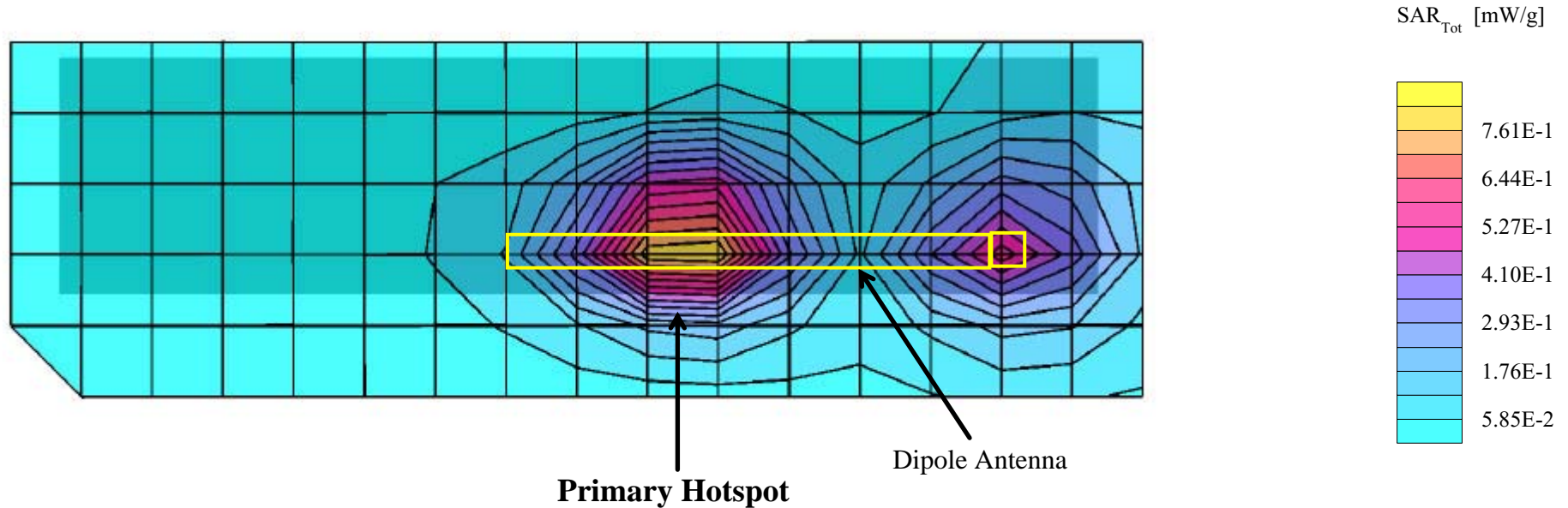
Channel 661 [1880.00 MHz]

Conducted Power: 27.9 dBm

Ambient Temp: 22.8°C; Fluid Temp: 23.1°C

Date Tested: March 24, 2003

Primary Hotspot Evaluation



Itronix Corporation FCC ID: KBCIX260A750MPIBT

SAM Phantom; Flat Section; Position: (90°,0°)

Probe: ET3DV6 - SN1387; ConvF(4.90,4.90,4.90); Crest factor: 2.0

1900 MHz Muscle: $\sigma = 1.55$ mho/m $\epsilon_r = 51.1$ $\rho = 1.00$ g/cm³

Coarse: Dx = 15.0, Dy = 15.0, Dz = 10.0

Cube 5x5x7

SAR (1g): 0.452 mW/g, SAR (10g): 0.260 mW/g

Body SAR - Right Side of LCD Display (Closed) - Antenna Parallel to Planar Phantom (Stowed Position)

1.5 cm Separation Distance from Dipole Antenna to Planar Phantom

Itronix IX260 Rugged Laptop PC

with Sierra Wireless AirCard 750 PCS GSM/GPRS Modem Card

co-located with Cisco MPI-350 Mini-PCI DSSS WLAN Card

PCS GPRS Mode

Single Transmit - PCS GPRS only

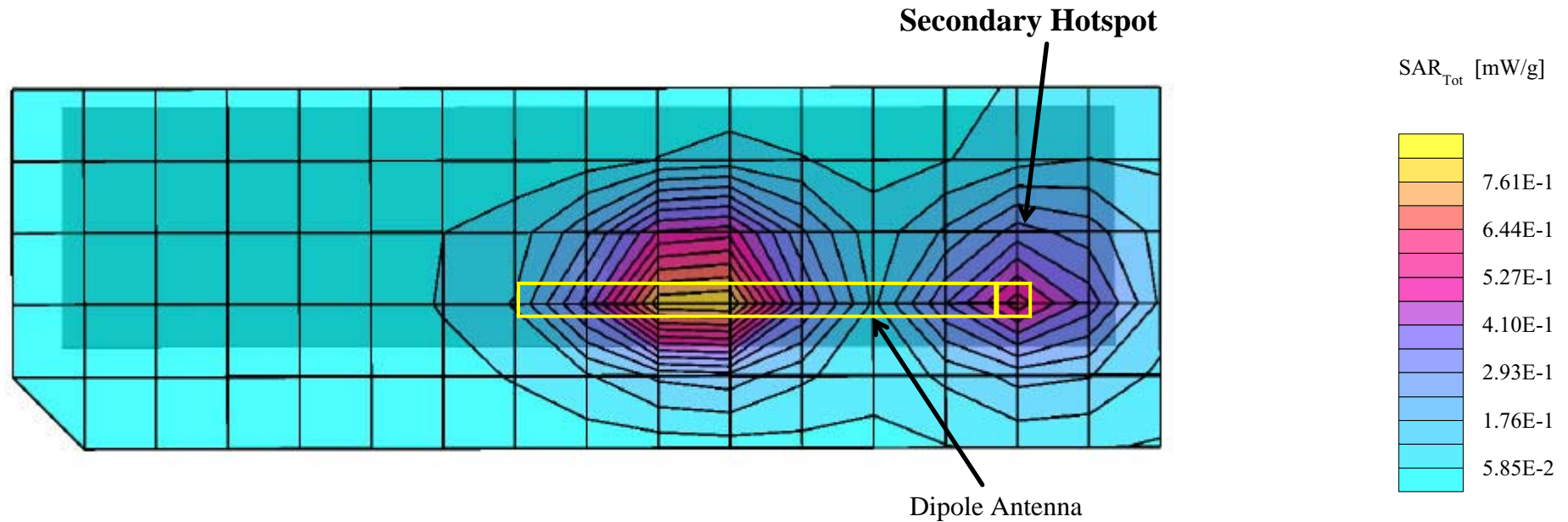
Channel 661 [1880.00 MHz]

Conducted Power: 27.9 dBm

Ambient Temp: 22.8°C; Fluid Temp: 23.1°C

Date Tested: March 24, 2003

Secondary Hotspot Evaluation



Itronix Corporation FCC ID: KBCIX260A750MPIBT

SAM Phantom; Flat Section; Position: (90°,0°)

Probe: ET3DV6 - SN1387; ConvF(4.90,4.90,4.90); Crest factor: 2.0

1900 MHz Muscle: $\sigma = 1.55$ mho/m $\epsilon_r = 51.1$ $\rho = 1.00$ g/cm³

Coarse: Dx = 15.0, Dy = 15.0, Dz = 10.0

Cube 5x5x7

SAR (1g): 0.438 mW/g, SAR (10g): 0.255 mW/g

Body SAR - Right Side of LCD Display (Closed) - Antenna Parallel to Planar Phantom (Extended Position)

1.5 cm Separation Distance from Dipole Antenna to Planar Phantom

Itronix IX260 Rugged Laptop PC

with Sierra Wireless AirCard 750 PCS GSM/GPRS Modem Card

co-located with Cisco MPI-350 Mini-PCI DSSS WLAN Card

PCS GPRS Mode

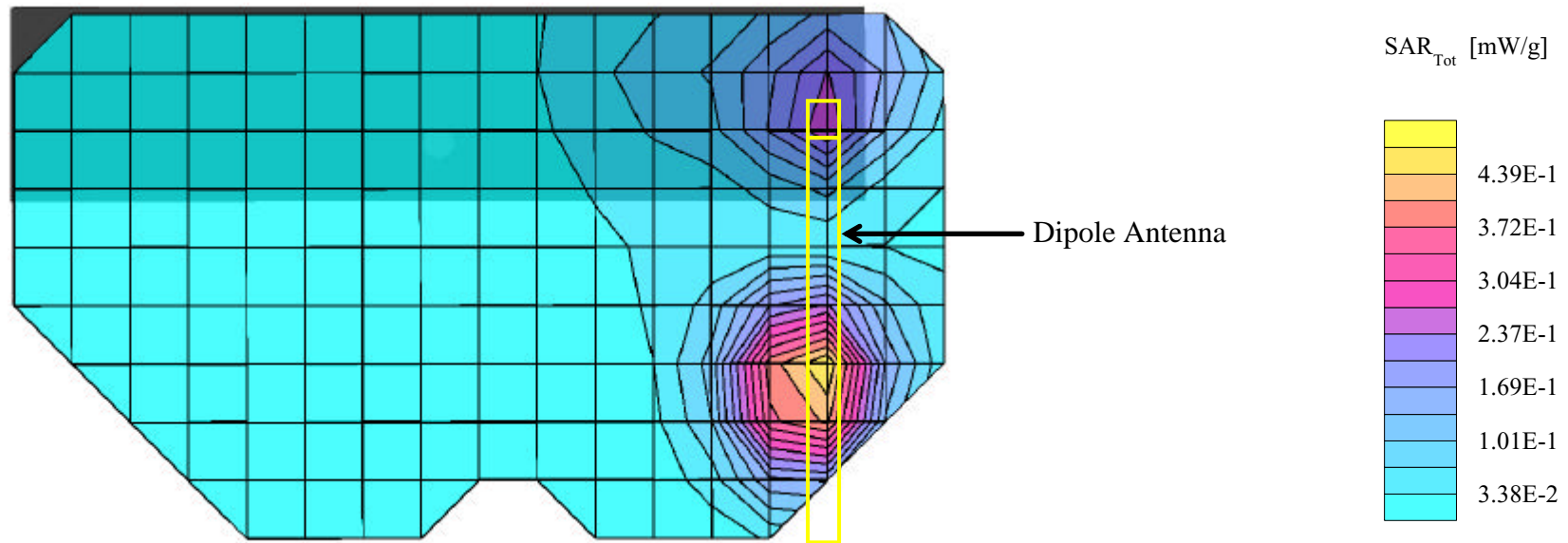
Single Transmit - PCS GPRS only

Channel 661 [1880.00 MHz]

Conducted Power: 27.9 dBm

Ambient Temp: 22.8°C; Fluid Temp: 23.1°C

Date Tested: March 24, 2003

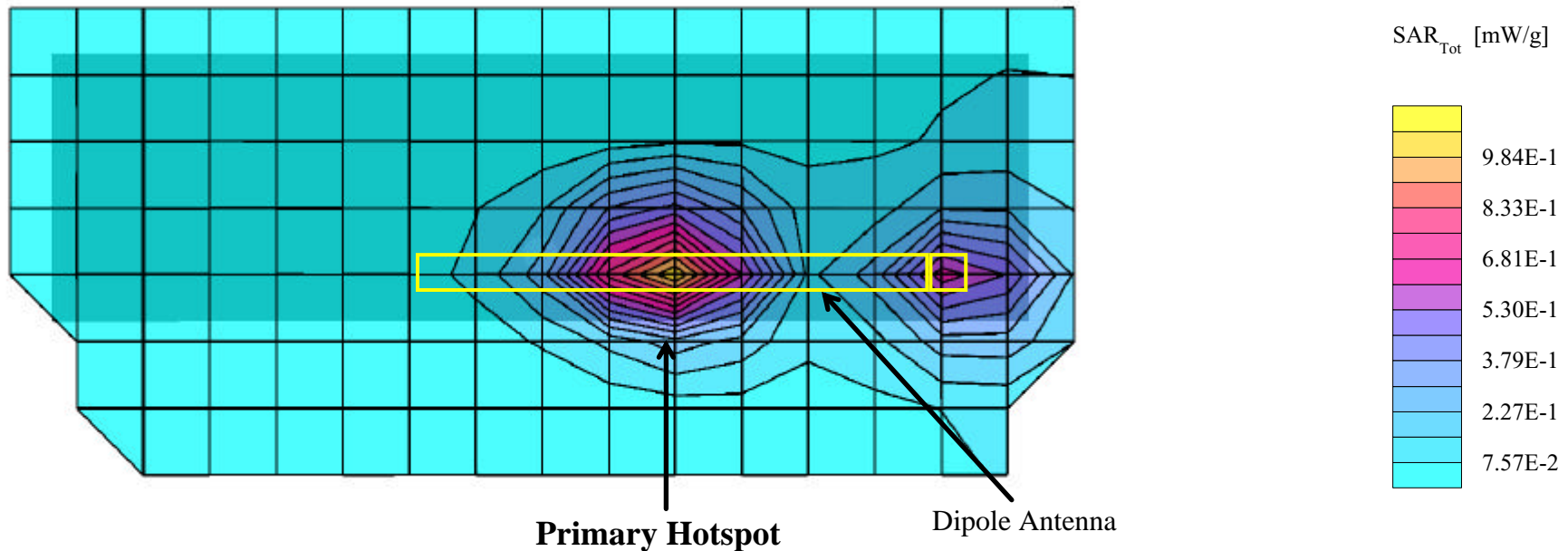


Itronix Corporation FCC ID: KBCIX260A750MPIBT

SAM Phantom; Flat Section; Position: (90°,0°)
 Probe: ET3DV6 - SN1387; ConvF(4.90,4.90,4.90); Crest factor: 2.0
 1900 MHz Muscle: $\sigma = 1.55$ mho/m $\epsilon_r = 51.1$ $\rho = 1.00$ g/cm³
 Coarse: Dx = 15.0, Dy = 15.0, Dz = 10.0
 Cube 5x5x7
 SAR (1g): 0.990 mW/g, SAR (10g): 0.523 mW/g

Body SAR - Right Side of LCD Display (Closed) - Antenna Parallel to Planar Phantom (Stowed Position)
 1.5 cm Separation Distance from Dipole Antenna to Planar Phantom
 Itronix IX260 Rugged Laptop PC
 with Sierra Wireless AirCard 750 PCS GSM/GPRS Modem Card
 co-located with Cisco MPI-350 Mini-PCI DSSS WLAN Card
 PCS GPRS Mode
Simultaneous Transmit with co-located DSSS WLAN Card
 Channel 661 [1880.00 MHz]
 Conducted Power: 27.9 dBm
 Ambient Temp: 22.8°C; Fluid Temp: 23.1°C
 Date Tested: March 24, 2003

Primary Hotspot Evaluation



Itronix Corporation FCC ID: KBCIX260A750MPIBT

SAM Phantom; Flat Section

Probe: ET3DV6 - SN1387; ConvF(4.90,4.90,4.90); Crest factor: 2.0

1900 MHz Muscle: $\sigma = 1.55$ mho/m $\epsilon_r = 51.1$ $\rho = 1.00$ g/cm³

Z-Axis Extrapolation at Peak SAR Location

Body SAR - Right Side of LCD Display (Closed) - Antenna Parallel to Planar Phantom (Stowed Position)

1.5 cm Separation Distance from Dipole Antenna to Planar Phantom

Itronix IX260 Rugged Laptop PC

with Sierra Wireless AirCard 750 PCS GSM/GPRS Modem Card

co-located with Cisco MPI-350 Mini-PCI DSSS WLAN Card

PCS GPRS Mode

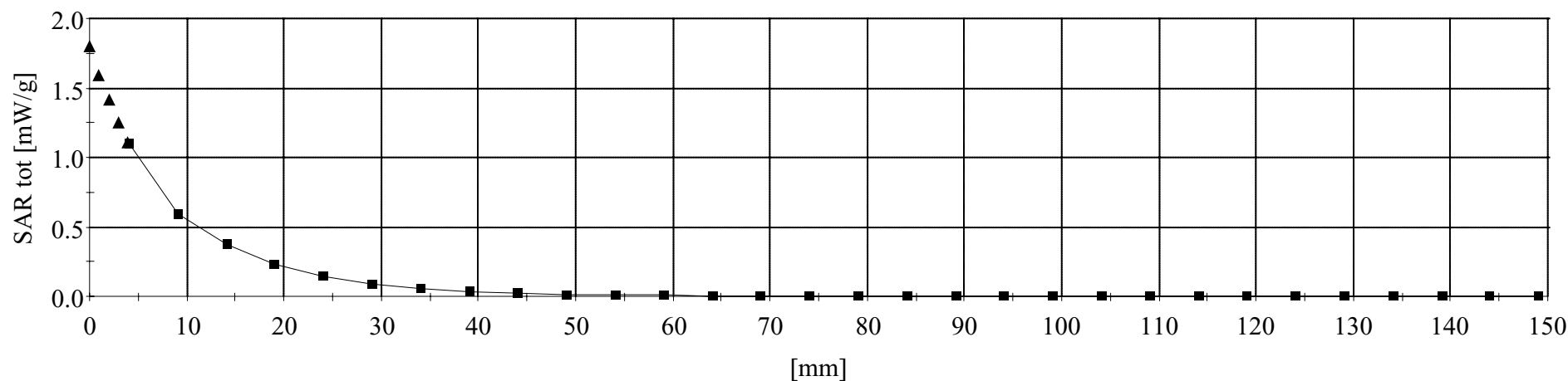
Simultaneous Transmit with co-located DSSS WLAN Card

Channel 661 [1880.00 MHz]

Conducted Power: 27.9 dBm

Ambient Temp: 22.8°C; Fluid Temp: 23.1°C

Date Tested: March 24, 2003

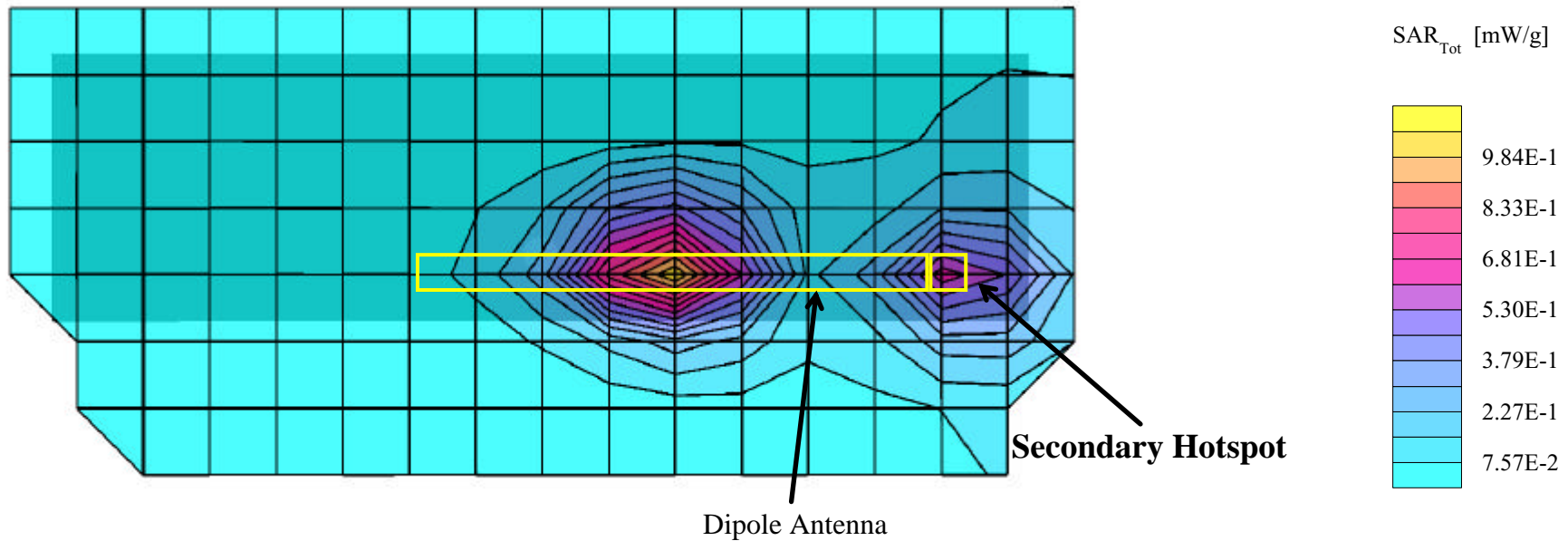


Itronix Corporation FCC ID: KBCIX260A750MPIBT

SAM Phantom; Flat Section; Position: (90°,0°)
 Probe: ET3DV6 - SN1387; ConvF(4.90,4.90,4.90); Crest factor: 2.0
 1900 MHz Muscle: $\sigma = 1.55$ mho/m $\epsilon_r = 51.1$ $\rho = 1.00$ g/cm³
 Coarse: Dx = 15.0, Dy = 15.0, Dz = 10.0
 Cube 5x5x7
 SAR (1g): 0.408 mW/g, SAR (10g): 0.215 mW/g

Body SAR - Right Side of LCD Display (Closed) - Antenna Parallel to Planar Phantom (Stowed Position)
 1.5 cm Separation Distance from Dipole Antenna to Planar Phantom
 Itronix IX260 Rugged Laptop PC
 with Sierra Wireless AirCard 750 PCS GSM/GPRS Modem Card
 co-located with Cisco MPI-350 Mini-PCI DSSS WLAN Card
 PCS GPRS Mode
Simultaneous Transmit with co-located DSSS WLAN Card
 Channel 661 [1880.00 MHz]
 Conducted Power: 27.9 dBm
 Ambient Temp: 22.8°C; Fluid Temp: 23.1°C
 Date Tested: March 24, 2003

Secondary Hotspot Evaluation



Itronix Corporation FCC ID: KBCIX260A750MPIBT

SAM Phantom; Flat Section; Position: (90°,0°)

Probe: ET3DV6 - SN1387; ConvF(4.90,4.90,4.90); Crest factor: 2.0

1900 MHz Muscle: $\sigma = 1.55$ mho/m $\epsilon_r = 51.1$ $\rho = 1.00$ g/cm³

Coarse: Dx = 15.0, Dy = 15.0, Dz = 10.0

Cube 5x5x7

SAR (1g): 0.793 mW/g, SAR (10g): 0.438 mW/g

Body SAR - Right Side of LCD Display (Closed) - Antenna Parallel to Planar Phantom (Stowed Position)

1.5 cm Separation Distance from Dipole Antenna to Planar Phantom

Itronix IX260 Rugged Laptop PC

with Sierra Wireless AirCard 750 PCS GSM/GPRS Modem Card

co-located with Cisco MPI-350 Mini-PCI DSSS WLAN Card

PCS GPRS Mode

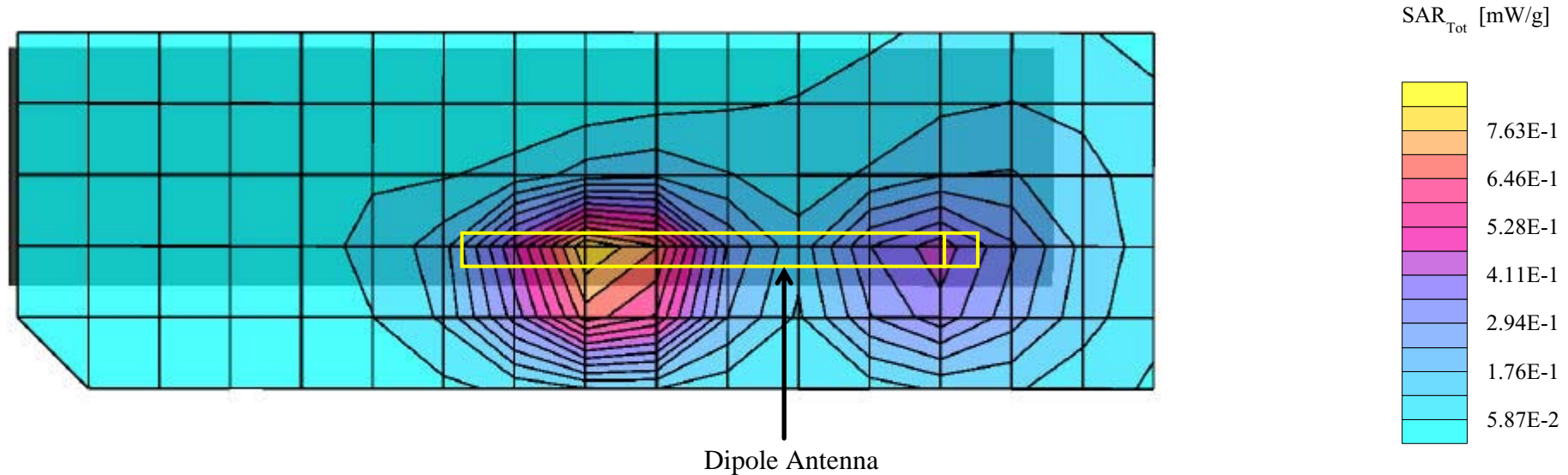
Simultaneous Transmit with co-located DSSS WLAN Card

Channel 512 [1850.25 MHz]

Conducted Power: 27.9 dBm

Ambient Temp: 22.8°C; Fluid Temp: 23.1°C

Date Tested: March 24, 2003



Itronix Corporation FCC ID: KBCIX260A750MPIBT

SAM Phantom; Flat Section; Position: (90°,0°)

Probe: ET3DV6 - SN1387; ConvF(4.90,4.90,4.90); Crest factor: 2.0

1900 MHz Muscle: $\sigma = 1.55$ mho/m $\epsilon_r = 51.1$ $\rho = 1.00$ g/cm³

Coarse: Dx = 15.0, Dy = 15.0, Dz = 10.0

Cube 5x5x7

SAR (1g): 0.886 mW/g, SAR (10g): 0.470 mW/g

Body SAR - Right Side of LCD Display (Closed) - Antenna Parallel to Planar Phantom (Stowed Position)

1.5 cm Separation Distance from Dipole Antenna to Planar Phantom

Itronix IX260 Rugged Laptop PC

with Sierra Wireless AirCard 750 PCS GSM/GPRS Modem Card

co-located with Cisco MPI-350 Mini-PCI DSSS WLAN Card

PCS GPRS Mode

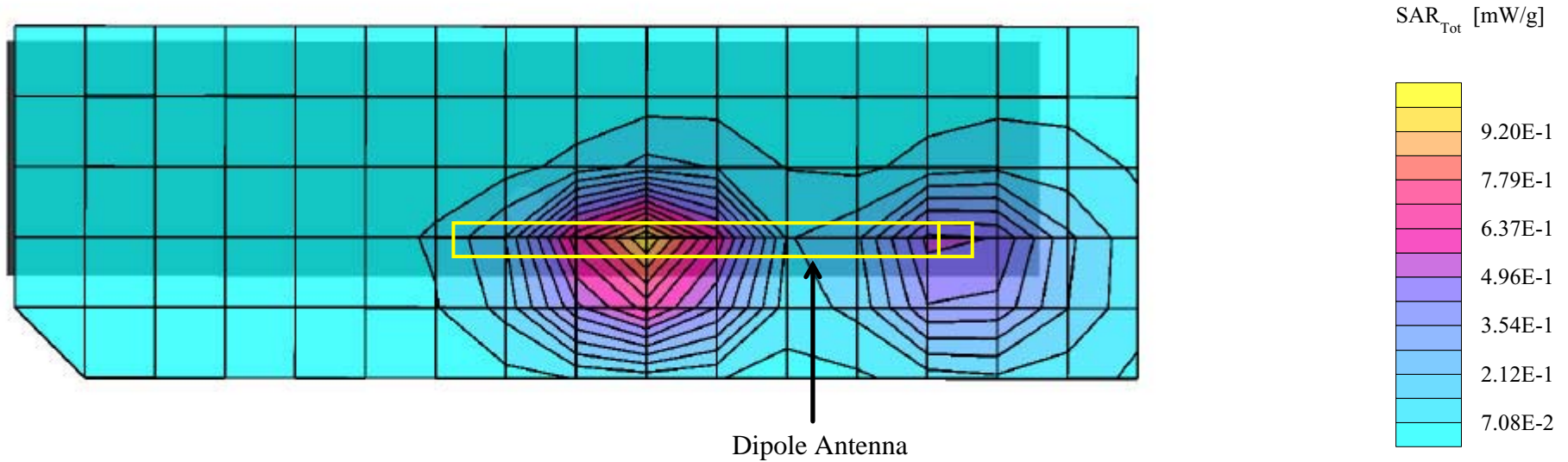
Simultaneous Transmit with co-located DSSS WLAN Card

Channel 810 [1909.875 MHz]

Conducted Power: 27.8 dBm

Ambient Temp: 22.8°C; Fluid Temp: 23.1°C

Date Tested: March 24, 2003

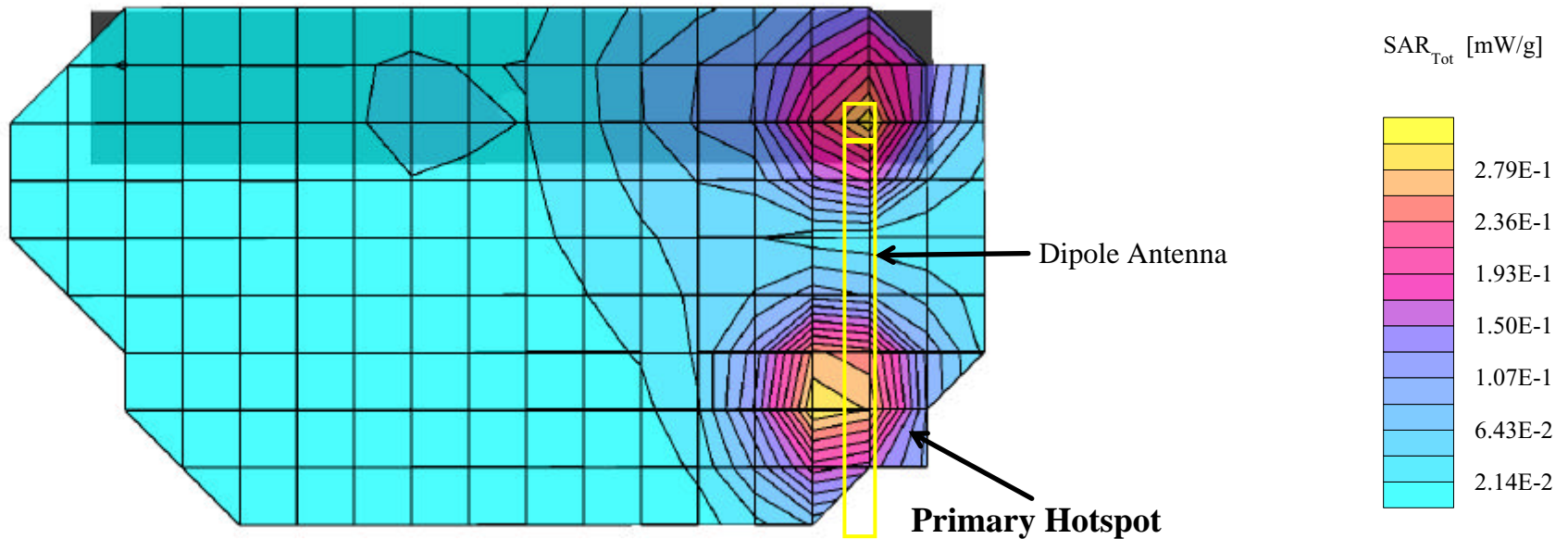


Itronix Corporation FCC ID: KBCIX260A750MPIBT

SAM Phantom; Flat Section; Position: (90°,0°)
 Probe: ET3DV6 - SN1387; ConvF(4.90,4.90,4.90); Crest factor: 2.0
 1900 MHz Muscle: $\sigma = 1.55$ mho/m $\epsilon_r = 51.1$ $\rho = 1.00$ g/cm³
 Coarse: Dx = 15.0, Dy = 15.0, Dz = 10.0
 Cube 5x5x7
 SAR (1g): 0.309 mW/g, SAR (10g): 0.180 mW/g

Body SAR - Right Side of LCD Display (Closed) - Antenna Parallel to Planar Phantom (Extended Position)
 1.5 cm Separation Distance from Dipole Antenna to Planar Phantom
 Itronix IX260 Rugged Laptop PC
 with Sierra Wireless AirCard 750 PCS GSM/GPRS Modem Card
 co-located with Cisco MPI-350 Mini-PCI DSSS WLAN Card
 PCS GPRS Mode
Simultaneous Transmit with co-located DSSS WLAN Card
 Channel 661 [1880.00 MHz]
 Conducted Power: 27.9 dBm
 Ambient Temp: 22.8°C; Fluid Temp: 23.1°C
 Date Tested: March 24, 2003

Primary Hotspot Evaluation



Itronix Corporation FCC ID: KBCIX260A750MPIBT

SAM Phantom; Flat Section; Position: (90°,0°)
 Probe: ET3DV6 - SN1387; ConvF(4.90,4.90,4.90); Crest factor: 2.0
 1900 MHz Muscle: $\sigma = 1.55$ mho/m $\epsilon_r = 51.1$ $\rho = 1.00$ g/cm³
 Coarse: Dx = 15.0, Dy = 15.0, Dz = 10.0
 Cube 5x5x7
 SAR (1g): 0.221 mW/g, SAR (10g): 0.129 mW/g

Body SAR - Right Side of LCD Display (Closed) - Antenna Parallel to Planar Phantom (Extended Position)
 1.5 cm Separation Distance from Dipole Antenna to Planar Phantom
 Itronix IX260 Rugged Laptop PC
 with Sierra Wireless AirCard 750 PCS GSM/GPRS Modem Card
 co-located with Cisco MPI-350 Mini-PCI DSSS WLAN Card
 PCS GPRS Mode
Simultaneous Transmit with co-located DSSS WLAN Card
 Channel 661 [1880.00 MHz]
 Conducted Power: 27.9 dBm
 Ambient Temp: 22.8°C; Fluid Temp: 23.1°C
 Date Tested: March 24, 2003

Secondary Hotspot Evaluation

