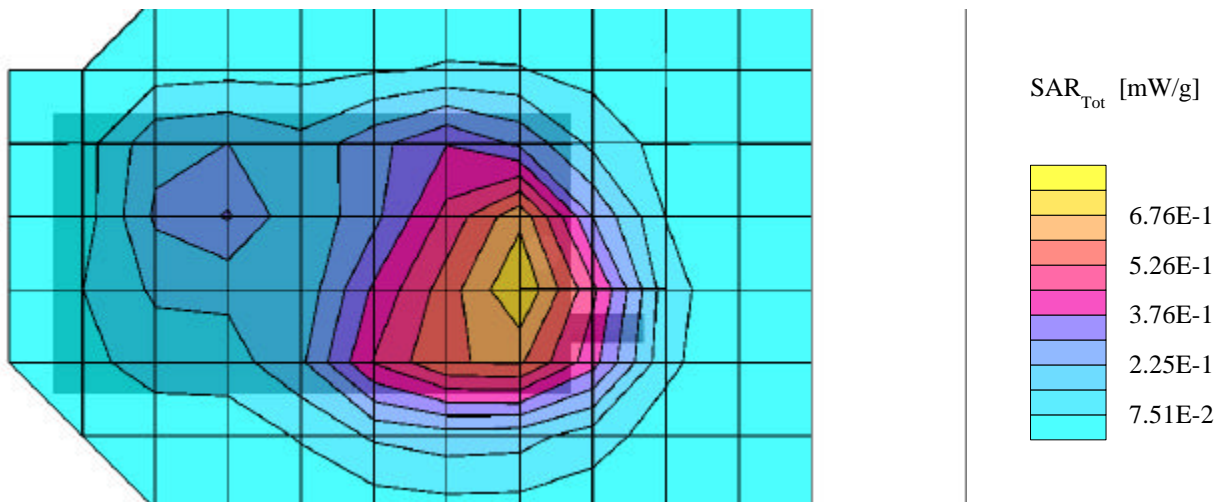


HAND SAR TEST PLOTS
Front of EUT

AirPrime Inc. FCC ID: PNF-SB3000P

Generic Twin Phantom; Flat Section; Position: (90°,90°)
Probe: ET3DV6 - SN1387; ConvF(5.50,5.50,5.50); Crest factor: 1.0
New 1800MHz Muscle: $\sigma = 1.39$ mho/m $\epsilon_r = 54.6$ $\rho = 1.00$ g/cm³
Coarse: Dx = 20.0, Dy = 20.0, Dz = 10.0
Cube 5x5x7
SAR (10g): 0.445 mW/g

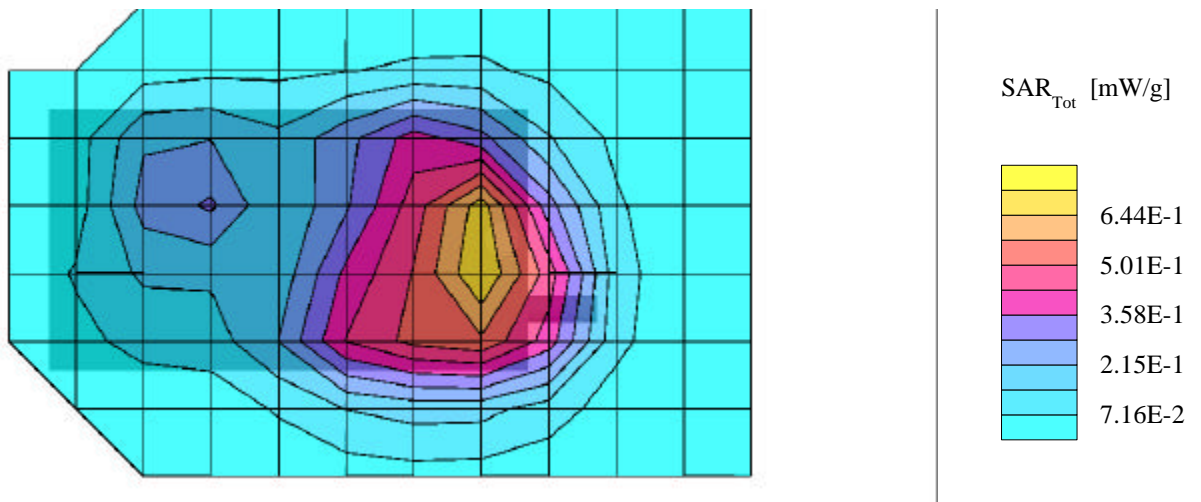
Hand SAR - Front of Unit - 0.0cm Separation
PCS CDMA Modem Module
With HandSpring Visor Prism
Low Channel 0025 [1851.25 MHz]
Conducted Power: 24.80 dBm
Date Tested: May 15, 2001



AirPrime Inc. FCC ID: PNF-SB3000P

Generic Twin Phantom; Flat Section; Position: (90°,90°)
Probe: ET3DV6 - SN1387; ConvF(5.50,5.50,5.50); Crest factor: 1.0
New 1800MHz Muscle: $\sigma = 1.39$ mho/m $\epsilon_r = 54.6$ $\rho = 1.00$ g/cm³
Coarse: Dx = 20.0, Dy = 20.0, Dz = 10.0
Cube 5x5x7
SAR (10g): 0.434 mW/g

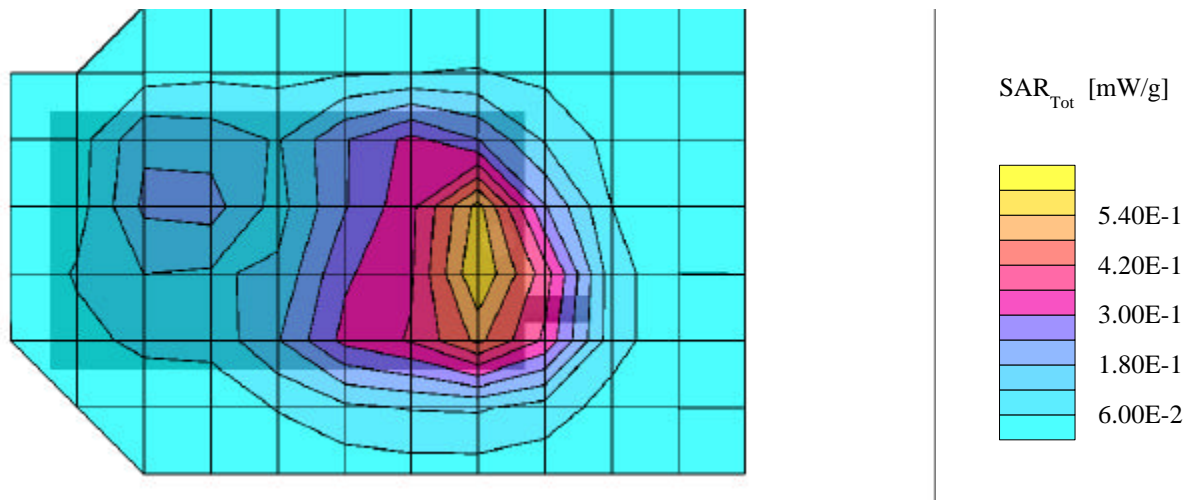
Hand SAR - Front of Unit - 0.0cm Separation
PCS CDMA Modem Module
With HandSpring Visor Prism
Mid Channel 0600 [1880.00 MHz]
Conducted Power: 24.55 dBm
Date Tested: May 15, 2001



AirPrime Inc. FCC ID: PNF-SB3000P

Generic Twin Phantom; Flat Section; Position: (90°,90°)
Probe: ET3DV6 - SN1387; ConvF(5.50,5.50,5.50); Crest factor: 1.0
New 1800MHz Muscle: $\sigma = 1.39$ mho/m $\epsilon_r = 54.6$ $\rho = 1.00$ g/cm³
Coarse: Dx = 20.0, Dy = 20.0, Dz = 10.0
Cube 5x5x7
SAR (10g): 0.343 mW/g

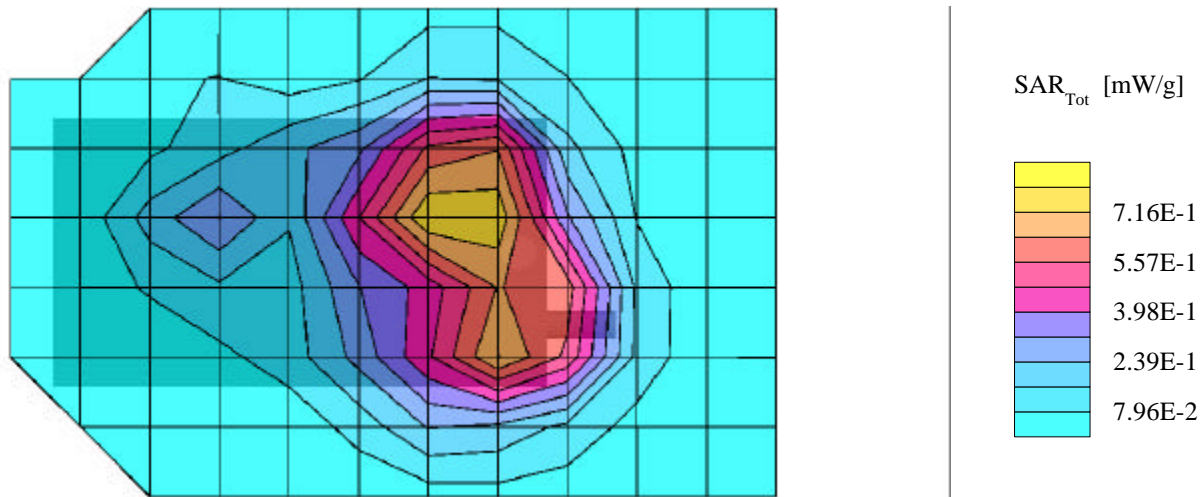
Hand SAR - Front of Unit - 0.0cm Separation
PCS CDMA Modem Module
With HandSpring Visor Prism
High Channel 1175 [1908.75 MHz]
Conducted Power: 24.80 dBm
Date Tested: May 15, 2001



AirPrime Inc. FCC ID: PNF-SB3000P

Generic Twin Phantom; Flat Section; Position: (90°,90°)
Probe: ET3DV6 - SN1387; ConvF(5.50,5.50,5.50); Crest factor: 1.0
New 1800MHz Muscle: $\sigma = 1.39$ mho/m $\epsilon_r = 54.6$ $\rho = 1.00$ g/cm³
Coarse: Dx = 20.0, Dy = 20.0, Dz = 10.0
Cube 5x5x7
SAR (10g): 0.550 mW/g

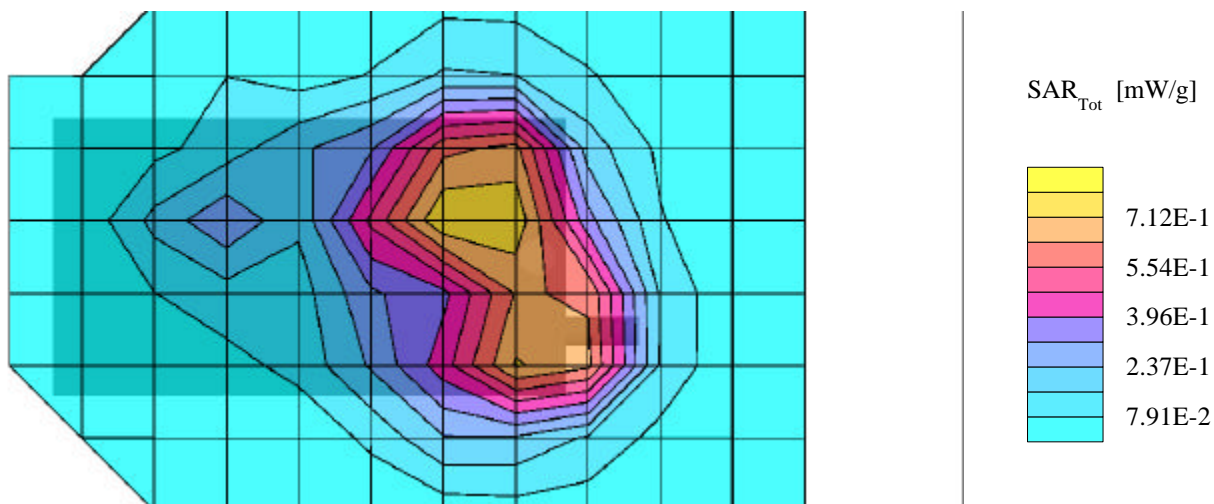
Hand SAR - Front of Unit - 0.0cm Separation
PCS CDMA Modem Module
With HandSpring Visor Edge
Low Channel 0025 [1851.25 MHz]
Conducted Power: 24.80 dBm
Date Tested: May 15, 2001



AirPrime Inc. FCC ID: PNF-SB3000P

Generic Twin Phantom; Flat Section; Position: (90°,90°)
Probe: ET3DV6 - SN1387; ConvF(5.50,5.50,5.50); Crest factor: 1.0
New 1800MHz Muscle: $\sigma = 1.39$ mho/m $\epsilon_r = 54.6$ $\rho = 1.00$ g/cm³
Coarse: Dx = 20.0, Dy = 20.0, Dz = 10.0
Cube 5x5x7
SAR (10g): 0.548 mW/g

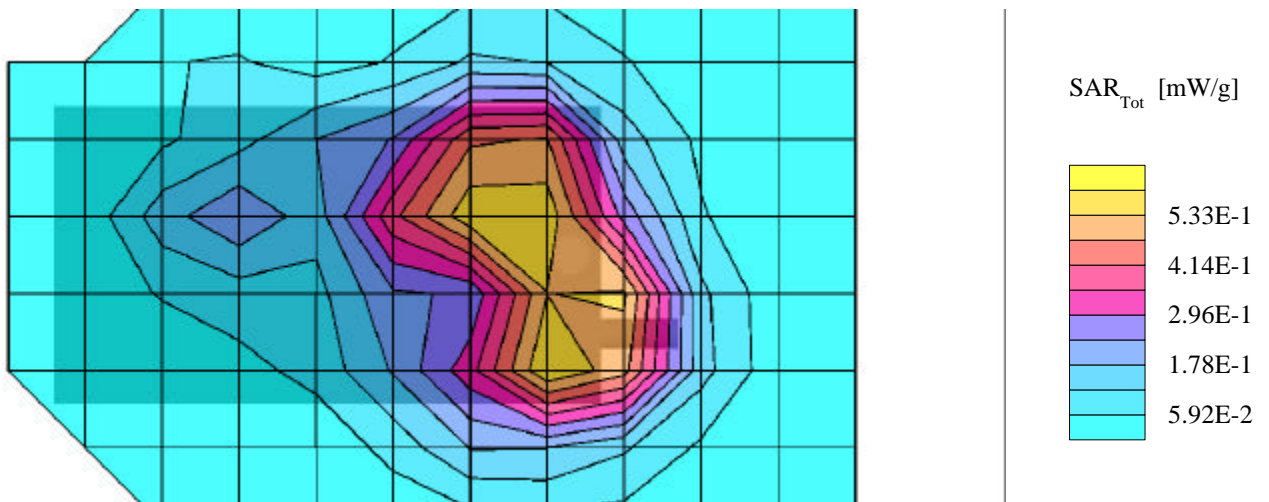
Hand SAR - Front of Unit - 0.0cm Separation
PCS CDMA Modem Module
With HandSpring Visor Edge
Mid Channel 0600 [1880.00 MHz]
Conducted Power: 24.55 dBm
Date Tested: May 15, 2001



AirPrime Inc. FCC ID: PNF-SB3000P

Generic Twin Phantom; Flat Section; Position: (90°,90°)
Probe: ET3DV6 - SN1387; ConvF(5.50,5.50,5.50); Crest factor: 1.0
New 1800MHz Muscle: $\sigma = 1.39$ mho/m $\epsilon_r = 54.6$ $\rho = 1.00$ g/cm³
Coarse: Dx = 20.0, Dy = 20.0, Dz = 10.0
Cube 5x5x7
SAR (10g): 0.393 mW/g

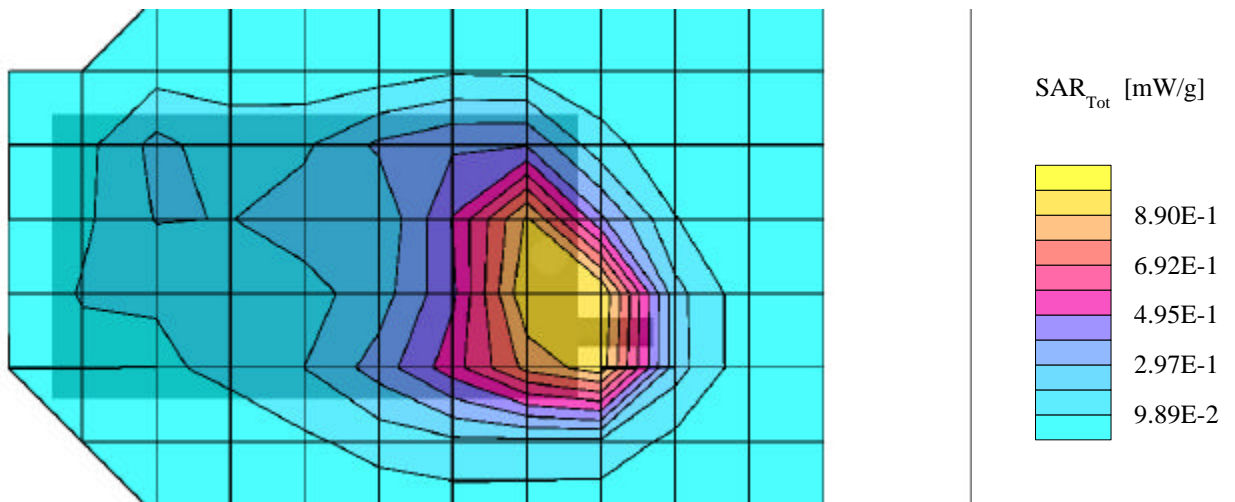
Hand SAR - Front of Unit - 0.0cm Separation
PCS CDMA Modem Module
With HandSpring Visor Edge
High Channel 1175 [1908.75 MHz]
Conducted Power: 24.80 dBm
Date Tested: May 15, 2001



AirPrime Inc. FCC ID: PNF-SB3000P

Generic Twin Phantom; Flat Section; Position: (90°,90°)
Probe: ET3DV6 - SN1387; ConvF(5.50,5.50,5.50); Crest factor: 1.0
New 1800MHz Muscle: $\sigma = 1.39$ mho/m $\epsilon_r = 54.6$ $\rho = 1.00$ g/cm³
Coarse: Dx = 20.0, Dy = 20.0, Dz = 10.0
Cube 5x5x7
SAR (10g): 0.719 mW/g

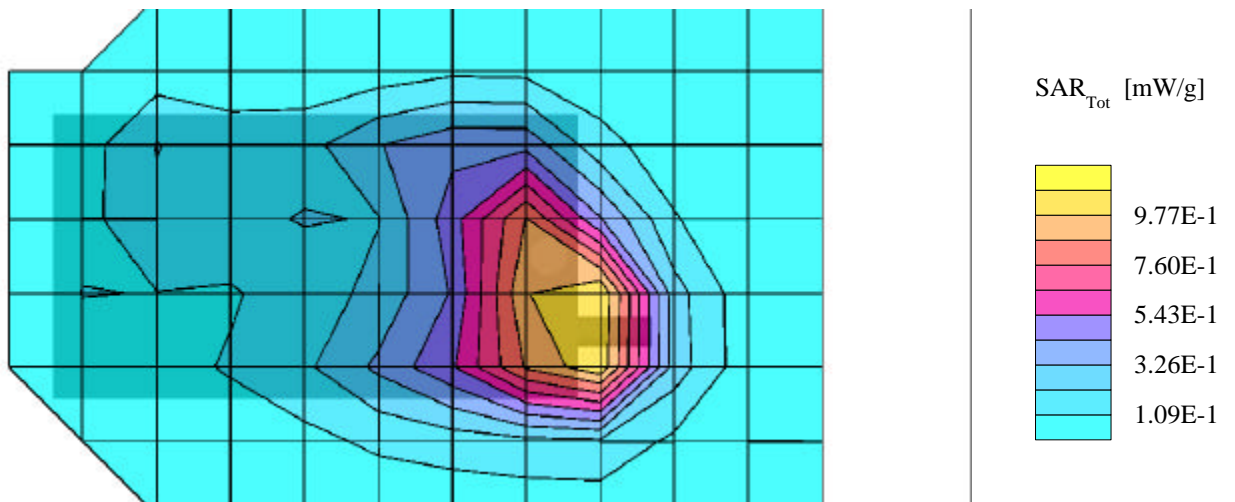
Hand SAR - Front of Unit - 0.0cm Separation
PCS CDMA Modem Module
With HandSpring Visor Platinum
Low Channel 0025 [1851.25 MHz]
Conducted Power: 24.80 dBm
Date Tested: May 15, 2001



AirPrime Inc. FCC ID: PNF-SB3000P

Generic Twin Phantom; Flat Section; Position: (90°,90°)
Probe: ET3DV6 - SN1387; ConvF(5.50,5.50,5.50); Crest factor: 1.0
New 1800MHz Muscle: $\sigma = 1.39$ mho/m $\epsilon_r = 54.6$ $\rho = 1.00$ g/cm³
Coarse: Dx = 20.0, Dy = 20.0, Dz = 10.0
Cube 5x5x7
SAR (10g): 0.778 mW/g

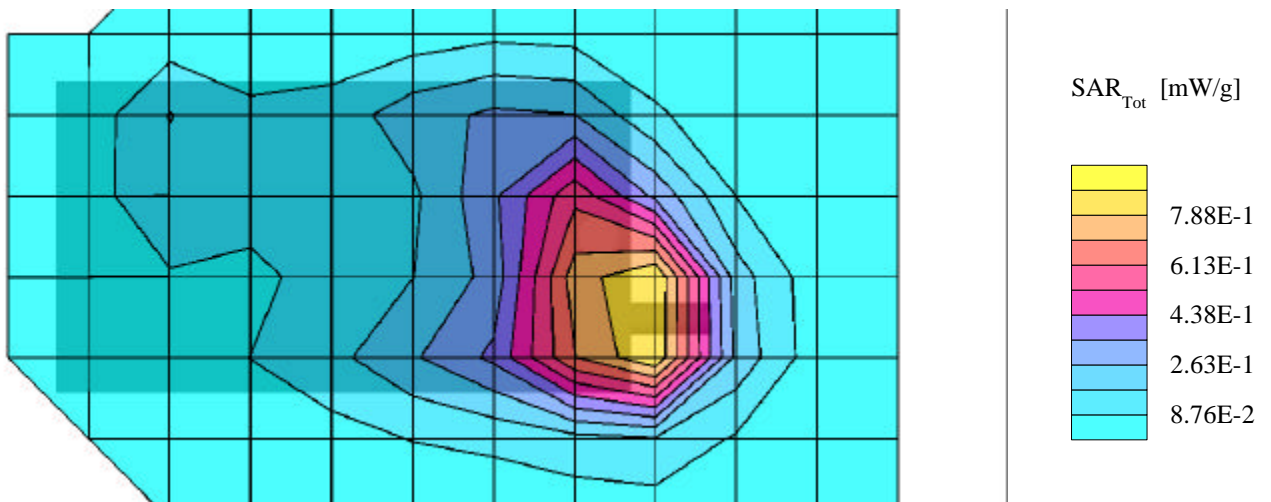
Hand SAR - Front of Unit - 0.0cm Separation
PCS CDMA Modem Module
With HandSpring Visor Platinum
Mid Channel 0600 [1880.00 MHz]
Conducted Power: 24.55 dBm
Date Tested: May 15, 2001



AirPrime Inc. FCC ID: PNF-SB3000P

Generic Twin Phantom; Flat Section; Position: (90°,90°)
Probe: ET3DV6 - SN1387; ConvF(5.50,5.50,5.50); Crest factor: 1.0
New 1800MHz Muscle: $\sigma = 1.39$ mho/m $\epsilon_r = 54.6$ $\rho = 1.00$ g/cm³
Coarse: Dx = 20.0, Dy = 20.0, Dz = 10.0
Cube 5x5x7
SAR (10g): 0.626 mW/g

Hand SAR - Front of Unit - 0.0cm Separation
PCS CDMA Modem Module
With HandSpring Visor Platinum
High Channel 1175 [1908.75 MHz]
Conducted Power: 24.80 dBm
Date Tested: May 15, 2001

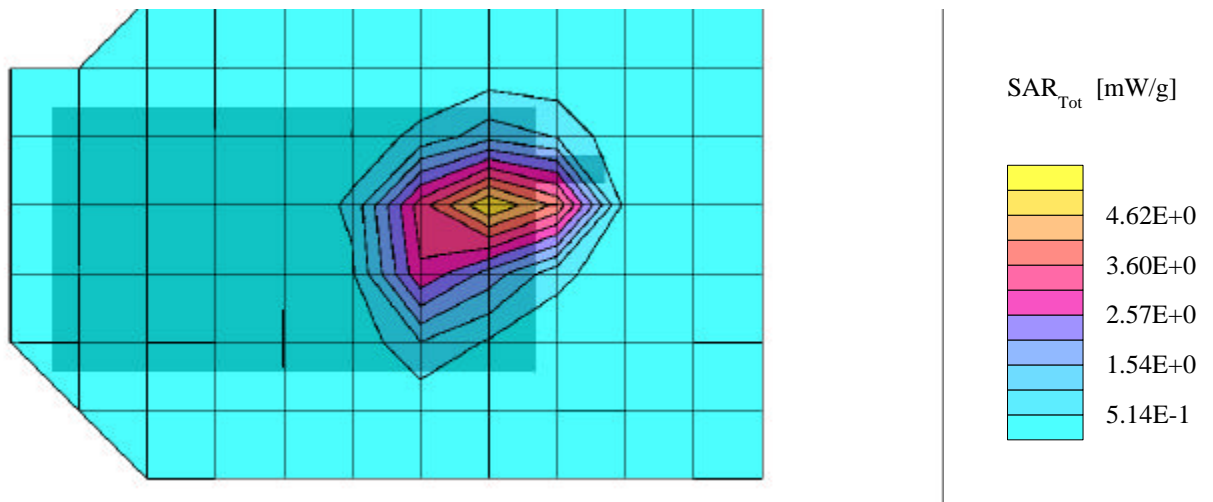


HAND SAR TEST PLOTS
Back of EUT

AirPrime Inc. FCC ID: PNF-SB3000P

Generic Twin Phantom; Flat Section; Position: (270°,270°)
Probe: ET3DV6 - SN1387; ConvF(5.50,5.50,5.50); Crest factor: 1.0
New 1800MHz Muscle: $\sigma = 1.39$ mho/m $\epsilon_r = 54.6$ $\rho = 1.00$ g/cm³
Coarse: Dx = 20.0, Dy = 20.0, Dz = 10.0
Cube 5x5x7
SAR (10g): 2.68 mW/g

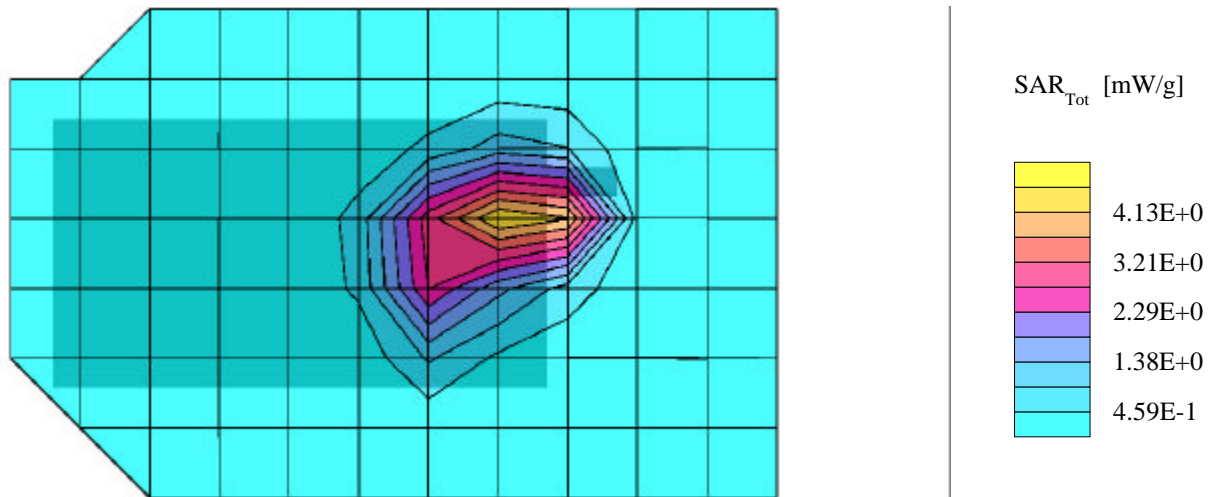
Hand SAR - Back of Unit - 0.0cm Separation
PCS CDMA Modem Module
With HandSpring Visor Prism
Low Channel 0025 [1851.25 MHz]
Conducted Power: 24.80 dBm
Date Tested: May 15, 2001



AirPrime Inc. FCC ID: PNF-SB3000P

Generic Twin Phantom; Flat Section; Position: (270°,270°)
Probe: ET3DV6 - SN1387; ConvF(5.50,5.50,5.50); Crest factor: 1.0
New 1800MHz Muscle: $\sigma = 1.39$ mho/m $\epsilon_r = 54.6$ $\rho = 1.00$ g/cm³
Coarse: Dx = 20.0, Dy = 20.0, Dz = 10.0
Cube 5x5x7
SAR (10g): 2.62 mW/g

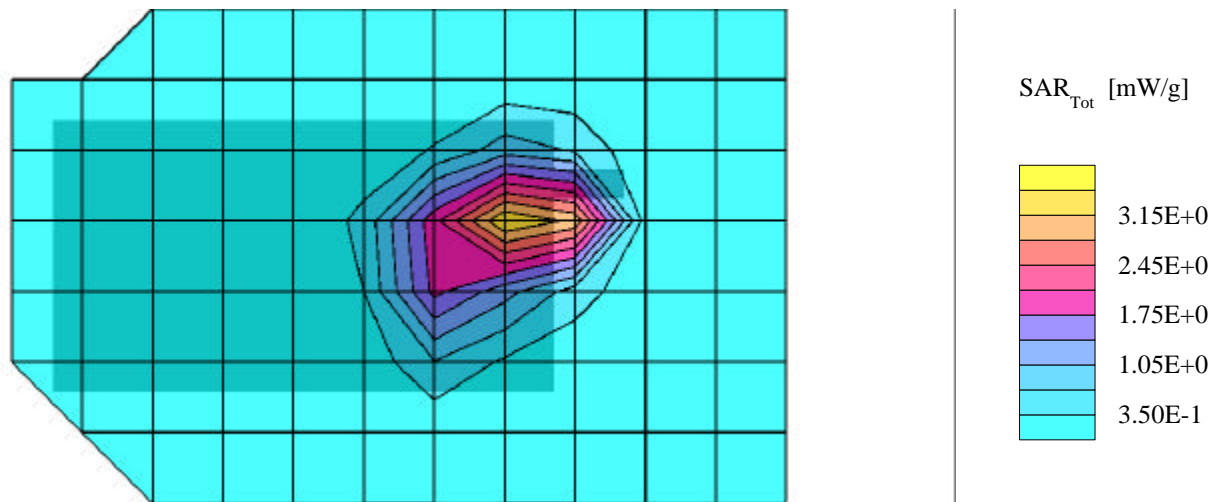
Hand SAR - Back of Unit - 0.0cm Separation
PCS CDMA Modem Module
With HandSpring Visor Prism
Mid Channel 0600 [1880.00 MHz]
Conducted Power: 24.55 dBm
Date Tested: May 15, 2001



AirPrime Inc. FCC ID: PNF-SB3000P

Generic Twin Phantom; Flat Section; Position: (270°,270°)
Probe: ET3DV6 - SN1387; ConvF(5.50,5.50,5.50); Crest factor: 1.0
New 1800MHz Muscle: $\sigma = 1.39$ mho/m $\epsilon_r = 54.6$ $\rho = 1.00$ g/cm³
Coarse: Dx = 20.0, Dy = 20.0, Dz = 10.0
Cube 5x5x7
SAR (10g): 1.89 mW/g

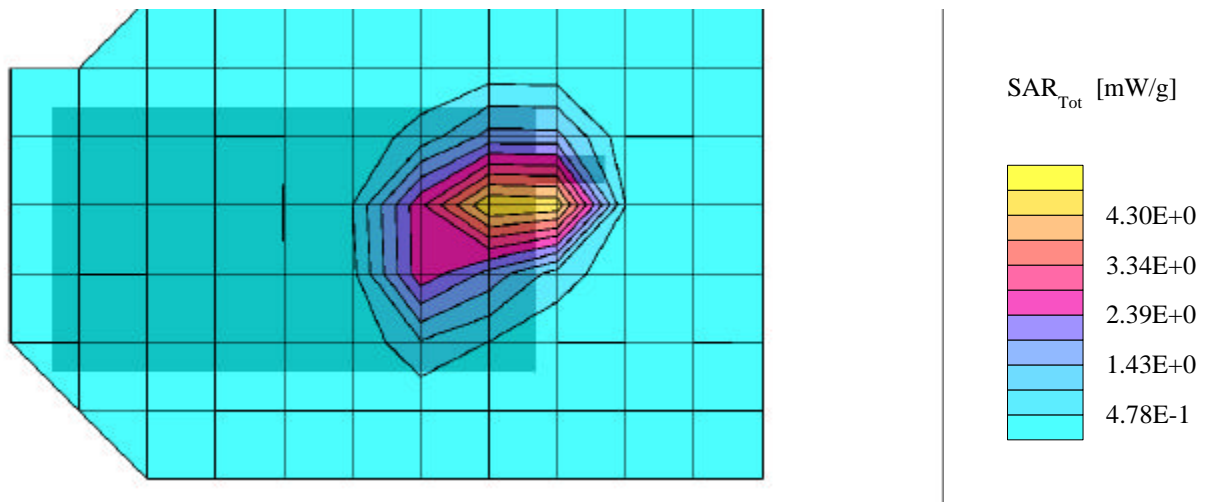
Hand SAR - Back of Unit - 0.0cm Separation
PCS CDMA Modem Module
With HandSpring Visor Prism
High Channel 1175 [1908.75 MHz]
Conducted Power: 24.80 dBm
Date Tested: May 15, 2001



AirPrime Inc. FCC ID: PNF-SB3000P

Generic Twin Phantom; Flat Section; Position: (270°,270°)
Probe: ET3DV6 - SN1387; ConvF(5.50,5.50,5.50); Crest factor: 1.0
New 1800MHz Muscle: $\sigma = 1.39$ mho/m $\epsilon_r = 54.6$ $\rho = 1.00$ g/cm³
Coarse: Dx = 20.0, Dy = 20.0, Dz = 10.0
Cube 5x5x7
SAR (10g): 2.85 mW/g

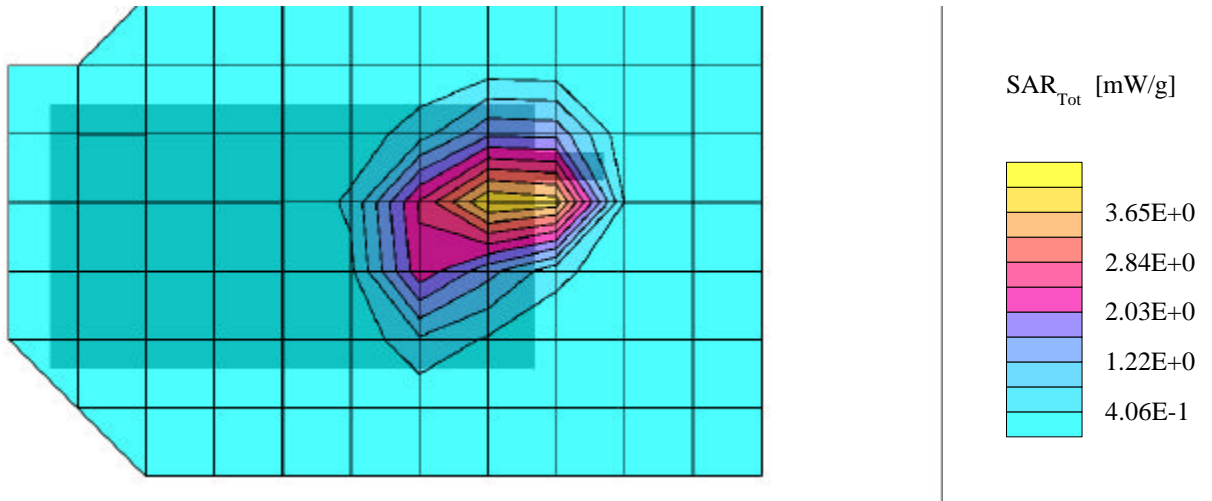
Hand SAR - Back of Unit - 0.0cm Separation
PCS CDMA Modem Module
With HandSpring Visor Edge
Low Channel 0025 [1851.25 MHz]
Conducted Power: 24.80 dBm
Date Tested: May 15, 2001



AirPrime Inc. FCC ID: PNF-SB3000P

Generic Twin Phantom; Flat Section; Position: (270°,270°)
Probe: ET3DV6 - SN1387; ConvF(5.50,5.50,5.50); Crest factor: 1.0
New 1800MHz Muscle: $\sigma = 1.39$ mho/m $\epsilon_r = 54.6$ $\rho = 1.00$ g/cm³
Coarse: Dx = 20.0, Dy = 20.0, Dz = 10.0
Cube 5x5x7
SAR (10g): 2.43 mW/g

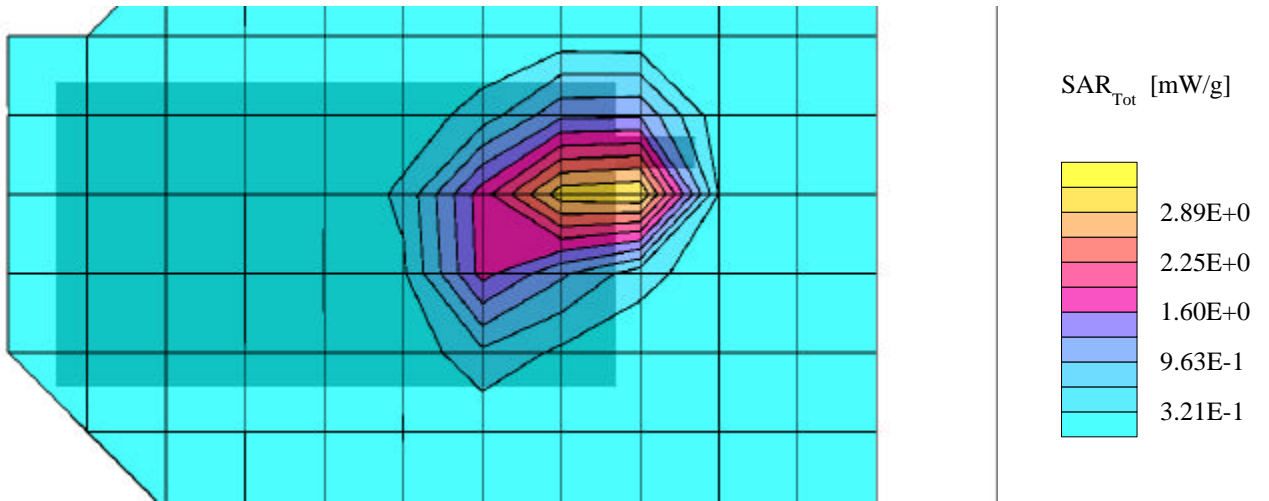
Hand SAR - Back of Unit - 0.0cm Separation
PCS CDMA Modem Module
With HandSpring Visor Edge
Mid Channel 0600 [1880.00 MHz]
Conducted Power: 24.55 dBm
Date Tested: May 15, 2001



AirPrime Inc. FCC ID: PNF-SB3000P

Generic Twin Phantom; Flat Section; Position: (270°,270°)
Probe: ET3DV6 - SN1387; ConvF(5.50,5.50,5.50); Crest factor: 1.0
New 1800MHz Muscle: $\sigma = 1.39$ mho/m $\epsilon_r = 54.6$ $\rho = 1.00$ g/cm³
Coarse: Dx = 20.0, Dy = 20.0, Dz = 10.0
Cube 5x5x7
SAR (10g): 1.98 mW/g

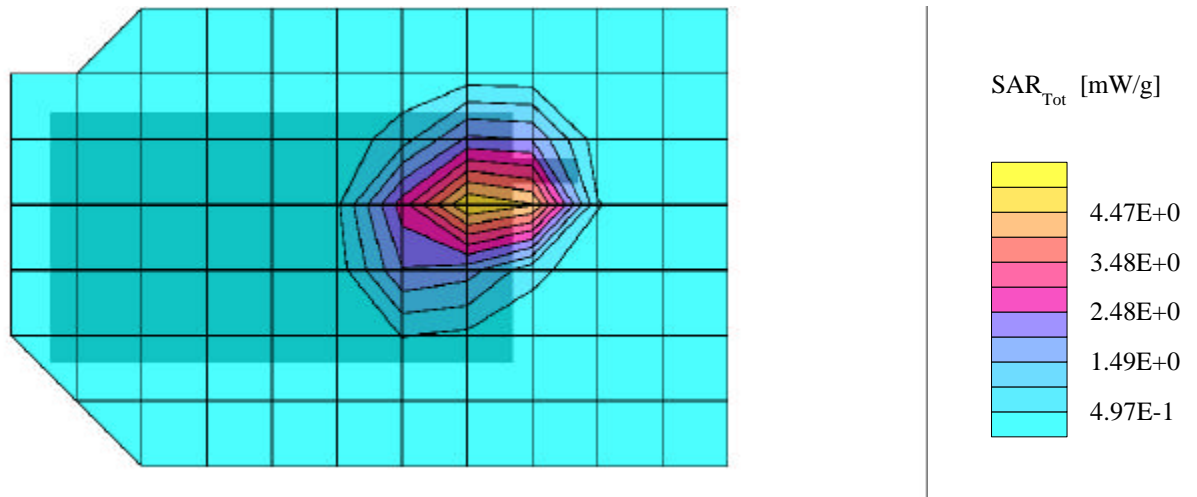
Hand SAR - Back of Unit - 0.0cm Separation
PCS CDMA Modem Module
With HandSpring Visor Edge
High Channel 1175 [1908.75 MHz]
Conducted Power: 24.80 dBm
Date Tested: May 15, 2001



AirPrime Inc. FCC ID: PNF-SB3000P

Generic Twin Phantom; Flat Section; Position: (270°,270°)
Probe: ET3DV6 - SN1387; ConvF(5.50,5.50,5.50); Crest factor: 1.0
New 1800MHz Muscle: $\sigma = 1.39$ mho/m $\epsilon_r = 54.6$ $\rho = 1.00$ g/cm³
Coarse: Dx = 20.0, Dy = 20.0, Dz = 10.0
Cube 5x5x7
SAR (10g): 2.93 mW/g

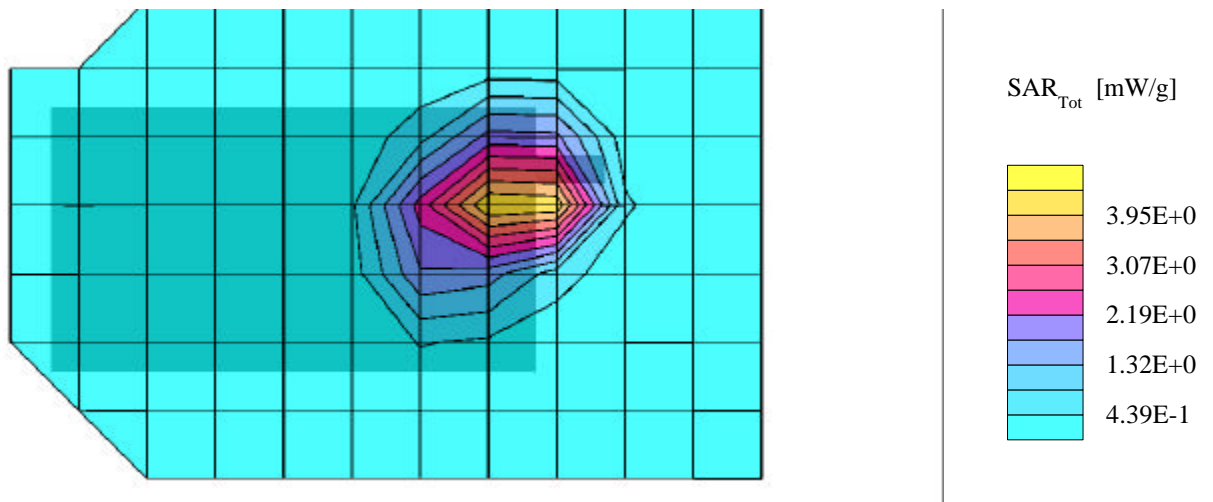
Hand SAR - Back of Unit - 0.0cm Separation
PCS CDMA Modem Module
With HandSpring Visor Platinum
Low Channel 0025 [1851.25 MHz]
Conducted Power: 24.80 dBm
Date Tested: May 15, 2001



AirPrime Inc. FCC ID: PNF-SB3000P

Generic Twin Phantom; Flat Section; Position: (270°,270°)
Probe: ET3DV6 - SN1387; ConvF(5.50,5.50,5.50); Crest factor: 1.0
New 1800MHz Muscle: $\sigma = 1.39$ mho/m $\epsilon_r = 54.6$ $\rho = 1.00$ g/cm³
Coarse: Dx = 20.0, Dy = 20.0, Dz = 10.0
Cube 5x5x7
SAR (10g): 2.74 mW/g

Hand SAR - Back of Unit - 0.0cm Separation
PCS CDMA Modem Module
With HandSpring Visor Platinum
Mid Channel 0600 [1880.00 MHz]
Conducted Power: 24.55 dBm
Date Tested: May 15, 2001



AirPrime Inc. FCC ID: PNF-SB3000P

Generic Twin Phantom; Flat Section; Position: (270°,270°)
Probe: ET3DV6 - SN1387; ConvF(5.50,5.50,5.50); Crest factor: 1.0
New 1800MHz Muscle: $\sigma = 1.39$ mho/m $\epsilon_r = 54.6$ $\rho = 1.00$ g/cm³
Coarse: Dx = 20.0, Dy = 20.0, Dz = 10.0
Cube 5x5x7
SAR (10g): 1.90 mW/g

Hand SAR - Back of Unit - 0.0cm Separation
PCS CDMA Modem Module
With HandSpring Visor Platinum
High Channel 1175 [1908.75 MHz]
Conducted Power: 24.80 dBm
Date Tested: May 15, 2001

