

● Safety Precautions

- This manual contains important information on safety precautions and product handling to prevent an accident.
Make sure to read this manual carefully before using this product.
- Keep this manual in a safe place where you can find easily after reading this manual.
- Seller will bear no responsibility over the loss caused by memory erasure due to product breakdown, repair or other reasons.

※ Warning and Caution symbols



Warning

- If mishandled, the user might get injured or product malfunction may occur.



Caution

- If mistreated, the user may get harmful effect, or there may be errors in the system

● Table of Contents

Safety Precautions	1~5
Features	6
Name of the Parts	7
Description of Items Displayed on LCD	8
Connecting to PC	10
Using MP3 Player Mate VII	11~13
- Installation	11
- Basic Function	12~13
Before Using	14~15
- Battery Charging	14
- Earphone	14
- Reset	14
- Lock/Unlock	14
- Power On/Off	15
- Volume Control	15
- Mode Switching	15
Audio Playback Mode	16~20
- Switching to the Audio Playback Mode	16
- Playback/Stop	16
- File Search/Navigation/Selection	16
- Sector Repetition (A↔B)	17
- Audio Setting Mode	17
- Navigation	19~20
FM Radio Mode	21~22
- Switching to the FM Radio Mode	21
- Changing FM Mode	21
- Auto Memory	21
- Frequency Search	21

● Table of Contents

- Changing Stereo/Mono Mode	22
- Saving Frequency	22
- Deleting the Preset	22
Recording Mode	23~24
- Switching to the Recording Mode	23
- Record/Stop	23
- Pause/Cancel pausing	23
- Voice Playback/Stop	24
Menu	24~36
- Basic Menu Handling	25~26
- Audio	27~30
- Display	30~32
- System	33~36
Specifications	37



Safety Precautions

● Storage precautions



Do not store the product at the high-temperature place (above 40 °C). Especially, do not store the product in the window-closed vehicle in summer.



Do not store the product at high humidity, wet or dusty area.



Keep out of the children's reach.

● Usage precautions



Do not drop the product or apply strong shock.



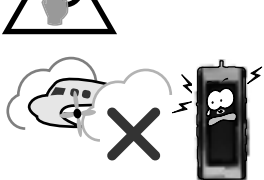
Do not scrub the product surface using alcohol, thinner or benzene.



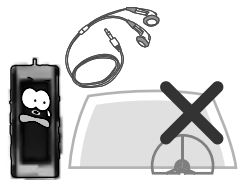
Do not apply strong shock to the LCD.



Safety Precautions



Do not use the product in the prohibited area where the electronic device usage is forbidden such as the aircraft.



There is a risk of the car accident if you use this product while you're driving or walking on the street.
Do not use the earphone or handle the product while wearing an earphone.



If you set the volume too high, your hearing ability may be impaired.
Set the proper volume.



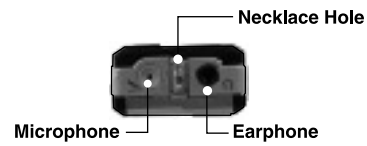
Do not disassemble the product at your discretion.

● Features

- Multi Codec Player : MP3, WMA Support
- Graphic 4 Line LCD, Blue LED Backlighting
- High Speed USB 2.0
- Easy to Use Navigation function
- Supporting ID3 TAG : Multiple languages
- Clock
- Firmware Upgrade
- Portable mass USB storage device
- 6 Equalizer Types (EQ) - Normal, Rock, Jazz, Classic, Pops, User
- Tab-type Menu - Easy to check the settings
- FM Radio- FM area setting, FM sensitivity setting

● Name of the Parts

▼ Top View

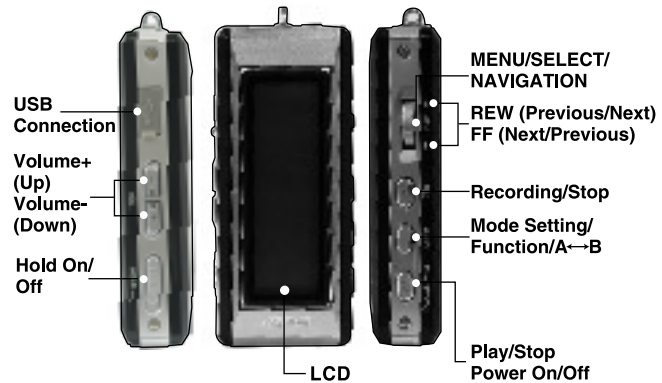


▼ Right side view

▼ Front View

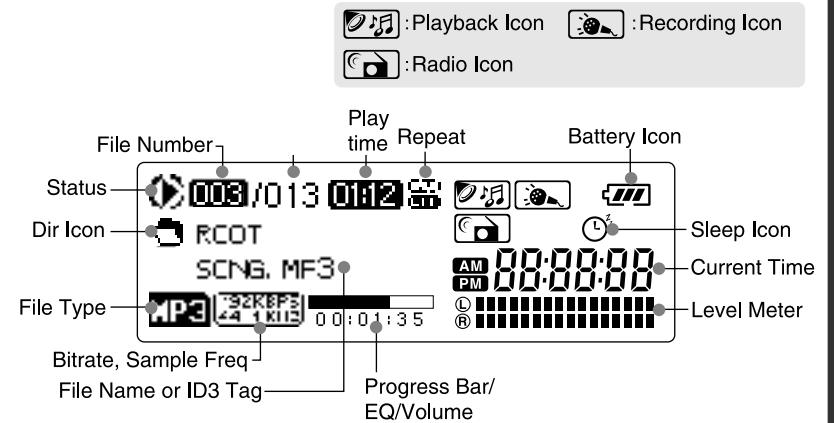
▼ Left side view

▼ Rear view



● Description on LCD

▶ Audio Playback



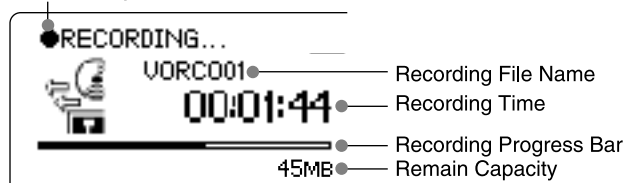
▶ FM Radio



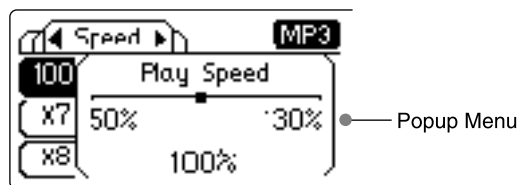
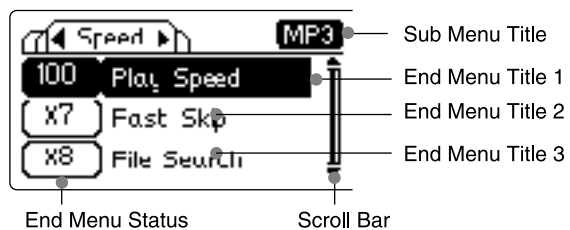
● Description on LCD

► Recording

Recording Status

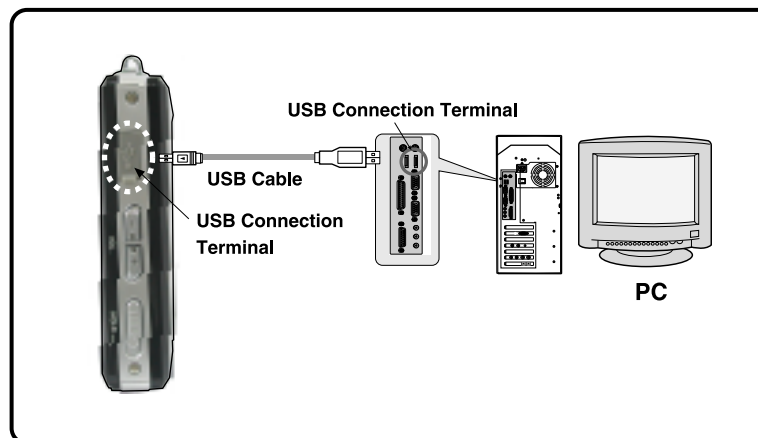


► Menu



● Connecting to a PC

- In case of using the Windows 98 and 98SE, use the CD you received with this product to install the program in state not connect this product with a PC.
Connect the player to your PC using the USB cable, as shown in the following figure.



Warning

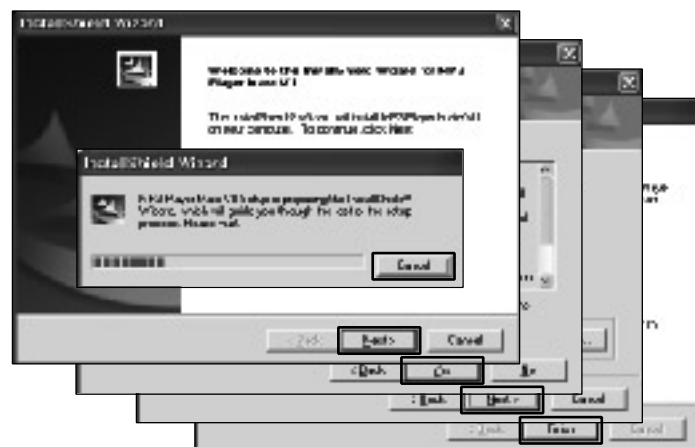
- Connect the USB cable to the PC after checking the shape of the player's USB connection terminal. If the cable is inserted with wrong direction, the product or your PC can be damaged seriously.

● Using MP3 Player Mate VII

Installation

- In case of using the Windows 98 and 98SE, use the CD you received with this product to install the program in state not connect this product with a PC.

The installation starts as follows when you insert the CD.



Reboot the PC.

The icon of MP3 Player Mate VII appears on the desktop.

● Using MP3 Player Mate VII

Basic Function



File List of the PC

Full, Used, Free Memory

<When you connect the set with PC>

Upper Folder: Click with the right mouse button and select the [Upper Folder] pop up menu.
But only MP3 file couldn't be uploaded.

1. View: Can select a view of files between Large Icons, List and Detail.



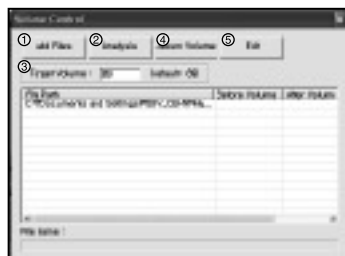
● Using MP3 Player Mate VII

2. Tool:

Id3tag Editor: Select the MP3file -> Tool -> Id3tag Editor
Can modify the ID3 tag version 1 and 2 of the MP3 file.



Volume Control: Can control the volume you want.



- ① Add Files
- ② Analysis: The existing volume
- ③ Target Volume
- ④ Album Volume: Adjust the volume.
- ⑤ Exit

Yes-> In case of adjusting the volume

No: differences under 2-> In case there are 2 and blow difference between the existing volume and the target volume

No: differences exceed 40-> In case there are 40 and up difference between the existing volume and the target volume.

Not

- ▶ In case of using the Windows ME, 2000 and XP, you can up/download files without the installation of the MP3 Player Mate VII.

● Before Using

1) Battery Charging

The player battery can be charged through the USB cable. Press the PLAY/STOP button after you connect the player to the PC using a USB cable and then the player will be switched to charging mode and automatically charged.

The player will be fully charged within 2 hour and 30 minutes when it is completely discharged. If charging is completed, the charging icon appears full.

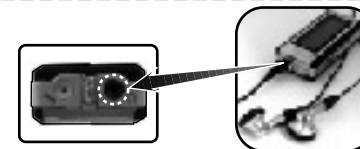


Note

- ▶ If the USB power source of PC is not stable, charging may not be completed although full icon appears. In this case, we recommend you to use a USB hub, which can fully support power source.
- ▶ When the player is connected to the PC with completely discharged battery, it goes into the charging mode directly.

2) Earphone

Connect the earphone plug to the player's earphone terminal.



Note

- ▶ An earphone plays a role of an antenna when listening to the FM broadcasting. If the earphone is not connected properly, frequency scanning

3) Resetting

Press the Reset button shortly using a sharp object like an earphone plug in case of abnormal operation. Then the system is initialized. Files saved in the player will not be deleted.

4) Lock / Unlock



ON ← → OFF

Lock: Push the HOLD switch down to the arrow direction.

Unlock: Push the HOLD switch up to the arrow direction.

Note

- ▶ You can prevent button operation when you set the HOLD switch.
- ▶ If you press any button while the HOLD switch is locked, Icon is displayed and button operation will be disabled.

● Before Using

5) Power On / Power Off



Power On: Press the PLAY/STOP button longer once to turn on the player.
Power Off: Press the PLAY/STOP button longer once to turn off the player.

6) Volume Control

Press Longer



Push +(Up)/-(Down) button to control the sound

Press Shortly



Warning

- Do not increase the volume too high during playback using an earphone. Your hearing ability can be impaired.

7) Mode Switching

Audio Playback → FM Radio → Recording



<AUDIO PLAY>



<FM RADIO>



<VOICE RECORD>

- Press the FUNC button shortly once.
- Use the REW(◀◀)/FF(▶▶) button to select the mode you want, and press the MENU button again to enter into the selected mode.
- 1) Audio Play Mode: MP3 or WMA audio file playback
- 2) FM Radio Mode: FM radio listening
- 3) Voice Mode: Voice recording

Note

- Press the REC/STOP button longer in the audio play mode to start voice recording.
- Mode switching in the audio playback mode and voice mode is available only when the player is stopped.

● Audio Playback Mode

1) Switching to the Audio Playback Mode

- Press the FUNC button shortly once to change the mode if you have selected the mode other than the audio playback mode.
- Select the audio playback mode and press the MENU button to switch to the audio playback mode.

2) Playback/Stop

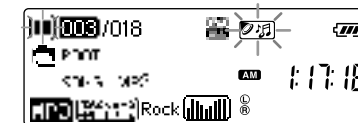


Playback: Press the PLAY/STOP button shortly once.

Press Shortly



<Playback>



<Stop>

3) File Search/Navigation/Selection



Push to the left/right shortly

<Moving to the previous/next file >

Push to the REW(◀◀)/FF(▶▶) direction shortly once during playback.

<Navigation>

Push to the REW(◀◀)/FF(▶▶) direction longer once during playback.

<Selecting the previous/next file >

Push to the REW(◀◀)/FF(▶▶) direction shortly once during stop.