



8+

RC Wakeboard Boat 2.0



# INSTRUCTION MANUAL

## FULL FUNCTION RADIO CONTROL BOAT

**\*IMPORTANT:** PLEASE DO NOT RETURN TO STORE  
For more information please email Consumer Services: [help@hypertoys.com](mailto:help@hypertoys.com)

Please thoroughly read the manual before operating product. Keep manual for future reference use.

**\*\* NOTE: THE MANUFACTURER IS NOT RESPONSIBLE FOR ANY RADIO OR TV INTERFERENCE CAUSED BY UNAUTHORIZED MODIFICATIONS TO THIS EQUIPMENT. SUCH MODIFICATIONS COULD VOID THE USER'S AUTHORITY TO OPERATE THE EQUIPMENT.**

**WARNING:**  
Changes or modifications to this unit not expressly approved by the party responsible for compliance could void the user's authority to operate the equipment.

This device complies with Part 15 of the FCC Rules. Operation is subject to the following two conditions:  
1. This device may not cause harmful interference, and  
2. This device must accept any interference received, including interference that may cause undesired operation.

**PLEASE DO NOT RETURN TO STORE**  
For more information please contact Customer Services: [help@hypertoys.com](mailto:help@hypertoys.com)

**WARNING:**  
CHOKING HAZARD-Small parts.  
Not for children under 3 years.

**DO NOT MIX ALKALINE, STANDARD (CARBON ZINC) OR RECHARGEABLE (NICKEL CADMIUM) BATTERIES.**  
**DO NOT MIX OLD AND NEW BATTERIES.**

**DO NOT DISPOSE OF BATTERIES IN FIRE, BATTERIES MAY EXPLODE OR LEAK.**

**RECHARGEABLE BATTERIES IN BOAT (INCLUDED) AND AA BATTERY IN CONTROLLER (NOT INCLUDED)**

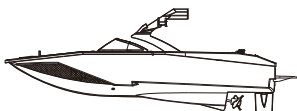
COLORS AND DECORATIONS MAY VARY. KEEP CONTENT DETAILS FOR FUTURE REFERENCE.

**THIS ITEM IS NOT MANUFACTURED OR DISTRIBUTED BY NAUTIQUE BOATS**

## CONTENT LIST



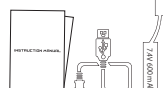
CONTROLLER



WAKEBOARDING BOAT

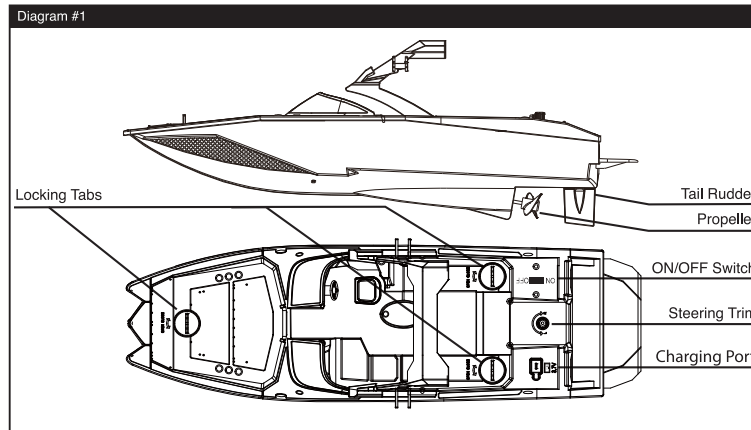


2 X WAKEBOARDS

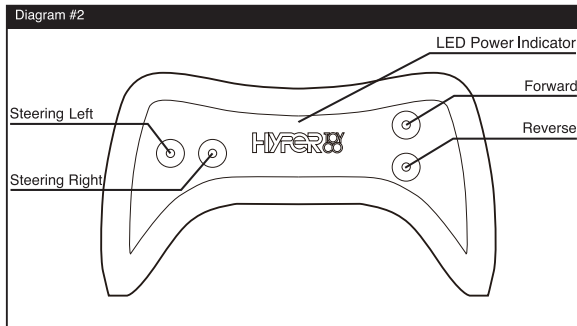


INSTRUCTION MANUAL  
USB CHARGING CORD  
1 X 7.4V / 600 mAh RECHARGEABLE BATTERY

## GETTING TO KNOW YOUR BOAT



## INFRARED CONTROL TRANSMITTER

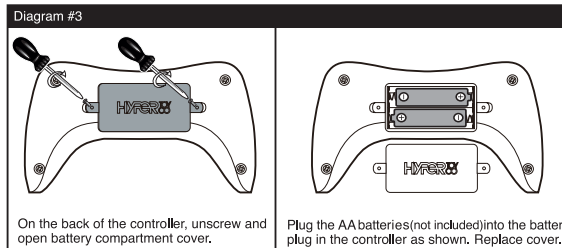


To prevent damage, the contents of the package that are listed have been packed in the tray and may be out of plain sight. Please remove all contents from the tray.

### CAUTION:

Do not touch the running propeller! Do not play with toy around anyone in water! Do not modify toy in any way. Adult supervision is required!

## CONTROLLER BATTERY INSTALLATION



### PLEASE NOTE:

A) Make sure the batteries have been inserted correctly (+ or -) into the controller.

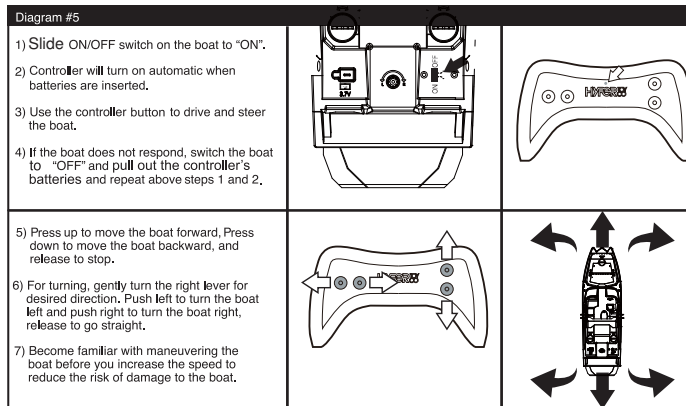
B) If the boat does not respond properly, please replace the alkaline batteries in the controller.

DO NOT MIX ALKALINE, STANDARD (CARBON ZINC) OR RECHARGEABLE (NICKEL CADMIUM) BATTERIES.

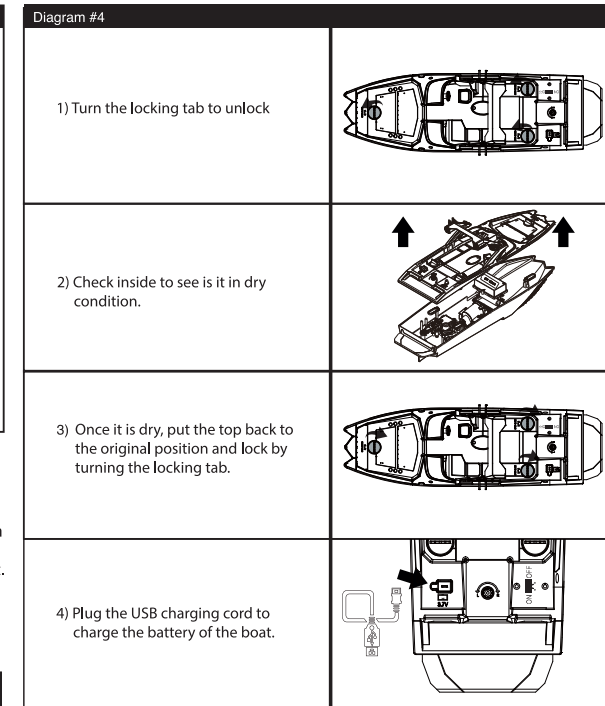
DO NOT MIX OLD AND NEW BATTERIES.

DO NOT DISPOSE OF BATTERIES IN FIRE. BATTERIES MAY EXPLODE OR LEAK.

## USING YOUR WAKEBOARD BOAT



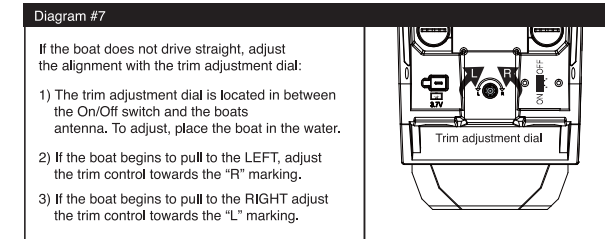
## BOAT PREPARATIONS



### DANGER!

ALWAYS KEEP HAIR, FINGERS, CLOTHING, JEWELRY AND OTHER ITEMS AWAY FROM THE PROPELLER.

## TRIMMING METHODS



### DANGER!

NEVER INSERT ANY SHARP OBJECTS, PINS OR SCREWS INTO THE BOAT AS THIS MAY PUNCTURE THE VESSEL OR THE BATTERY!

## TROUBLE SHOOTING

Problems	Reasons	Solutions
Sailing Problems	The battery inside the radio controller is too weak.	Replace with new alkaline batteries.
	There is a weak or low reception to the radio controls.	Check the rudder and propeller for lint, thread, hair or dust.
	The batteries inside the boat are too weak.	Recharge or replace with new batteries inside the boat.
Other	The boat does not respond to the radio control.	Try playing at another location.
		Try moving closer to the boat, and try again.
	The radio control's frequency is disrupted by something around the environment.	Some other equipment using the same radio wave could disrupt the radio control (like a CB radio). Either play in another location or turn off the other equipment.

This device complies with part 15 of the FCC Rules. Operation is subject to the following two conditions: (1) this device may not cause harmful interference, and (2) this device must accept any interference received, including interference that may cause undesired operation.

**WARNING:** changes or modifications to this unit not expressly approved by the party responsible for compliance could void the user's authority to operate the equipment.

### PLEASE NOTE:

This equipment has been tested and found to comply with the limits for a Class B digital device, pursuant to part 15 of the FCC Rules. These limits are designed to provide reasonable protection against harmful interference in a residential installation. This equipment generates, uses and can radiate radio frequency energy and, if not installed and used in accordance with the instructions, may cause harmful interference to radio communications. However, there is no guarantee that interference will not occur in a particular installation. If this equipment does cause harmful interference to radio or television reception, which can be determined by turning the equipment off and on, the user is encouraged to try to correct the interference by one or more of the following measures:

- Reorient or relocate the receiving antenna.
- Increase the separation between the equipment and receiver.
- Connect the equipment into an outlet on a circuit different from that to which the receiver is needed.
- Consult the dealer or an experienced radio/TV technician for help.



## WARNING:

Only to be used in water in which the child is within its depth and under supervision.

**⚠ CALIFORNIA PROPOSITION 65 WARNING:**  
This product can expose you to chemicals including lead, which is known to the State of California to cause cancer and birth defects or other reproductive harm. For more information go to [www.P65Warnings.ca.gov](http://www.P65Warnings.ca.gov).

MADE IN CHINA



**DISTRIBUTED BY:**  
**HYPER TOY COMPANY**  
1-866-204-9737 Toll Free  
177 Malaga Park Dr. Malaga, NJ 08328

**HYPER TOY**  
CO  
[help@hypertoys.com](mailto:help@hypertoys.com)

## RC CAUTIONS

1. Make sure you always use new or fully charged batteries in the controller.
2. Do not operate the boat if it becomes damaged in any way.
3. Check that the controller is making a connection with the boat before operating.
4. Try not to crash the boat as this may cause damage.
5. Check that the area is clear of all obstacles before you operate.
6. Adult supervision is always recommended.
7. Never operate near animals or people in the water. Keep rudder away from your fingers, hair, eyes and other body parts. Stay away from obstacles and electrical hazards.

## BATTERY WARNINGS

1. Non-rechargeable batteries are not to be recharged.
2. Rechargeable batteries are only to be charged under adult supervision.
3. Different types of batteries or new and used batteries are not to be mixed.
4. Batteries are to be inserted with the correct polarity.
5. Exhausted batteries are to be removed from the toy.
6. The supply terminals are not to be short-circuited.

## CAUTIONS AND WARNINGS

- To avoid personal injury, death or damage to product, carefully read and follow these warning.
- As with all electric products, precautions should be observed during handling and use to prevent electric shock.
- Use only with adult supervision, all assembly must be done by an adult, check the boat and controller for proper set up for each use.
- Operating multiple boats with the same frequency in close proximity will cause interference and poor performance.
- Boat works best away from high voltage power lines, large buildings and walls.
- Recharging batteries should be done by an adult.
- To avoid electrical shock do not recharge batteries near water.
- Motor of boat will get hot, use caution in handling.
- Running your boat continuously for long periods of time generate high heat levels. Heat causes wear and tear on the boat. To help keep heat levels down, when your boat's battery dies, let the boat cool at least 10 minutes before installing fresh batteries.
- Do not charge a damaged, leaking, hot or wet rechargeable battery.
- Under no circumstance should the batteries be disposed of in a fire. This may cause injury, leakage or explosion.
- Please dispose of all battery cells properly.
- Do not break, open or disassemble the batteries.
- Do not stall the motor during use.
- When the product does not respond, slows down, or loses range, replace the batteries.
- Always keep hair, fingers, clothing, jewelry and other items away from the propeller.
- This product is for outdoor use only.
- Alkaline batteries are recommended for best performance.
- When not in use, remove batteries from controller, store out of direct sunlight.

## CAUTIONS AND TIPS FOR OPERATING IN WATER

- Use boat in a wide-open calm area of water. Do not operate the boat when there is a strong current, large waves, wind, vents or pumps, these may overpower the boat and make it difficult to control. Best performance of boat will be in a low wake, no current area and low wind conditions. NOTE: Always get permission to use your boat in each water location.
- Boat is not meant for use in oceans, rivers, lakes, or streams. For best results, use the boat in still water or ponds.
- Keep operating range in mind while driving on open water. Stand 15–20 ft away from the water's edge to make certain you will be able to drive your boat back to shore. If the boat drives out of range and control, simple walk a few steps towards the boat while maintaining a safe distance from shore. You will now be able to drive your boat back closer.
- Be careful not to wade into deep water or strong currents. When the boat goes outside of the controllers operating range, hold the controller as high as possible with the antenna vertical to re-establish contact. If you cannot, then move closer to the boat to control it.
- When the batteries begin to lose power, the boat will begin to slow down. Be sure to bring the boat to shore before the boat fails. (If product fails before returning the boat have an adult safely retrieve).
- When you are finished sailing your boat, take it out of the water safely, and set the On/Off on the boat to the "Off" position. Next, turn it upside down so the drain hole on the deck points toward the ground, to drain any water that may have entered the boat. Dry your boat thoroughly before you store it. Leave the battery compartment open while in storage to allow any moisture to evaporate.
- Do not use if moisture is present inside the unit, remove all batteries and thoroughly clean and dry boat before use.
- If boat capsizes or becomes submerged, turn off product, remove all batteries at once and completely drain and dry all accessible parts of the unit. Allow to air dry overnight. Do not use until product is completely dry inside.
- Never leave your boat in the water when you finish playing. Water might seep into the boat and damage electronic parts.
- Do not operate the boat where there is debris or plants in the water, as this could cause damage to the propeller or hull, and stop the boat away from shore.
- Keep boat away from people in water, other boats or stationary objects and wildlife.
- For fresh water use only, not recommended for salt water environments. If used in salt water, or chlorine environments thoroughly rinse boat with fresh water directly after use.
- Never play outdoors during extreme weather, such as thunderstorms.
- Avoid hard crashes.
- Never touch the propeller while it is turning.
- Never give the RC or controller to any child under the age of 3, as it contains small parts.
- Do not allow the antenna to get wet, as this will affect the distance of the controller.
- Never use chemicals including benzene, alcohol, or thinning agents to clean the boat, as this may damage the boat.
- Normal working distance is about 80 feet.