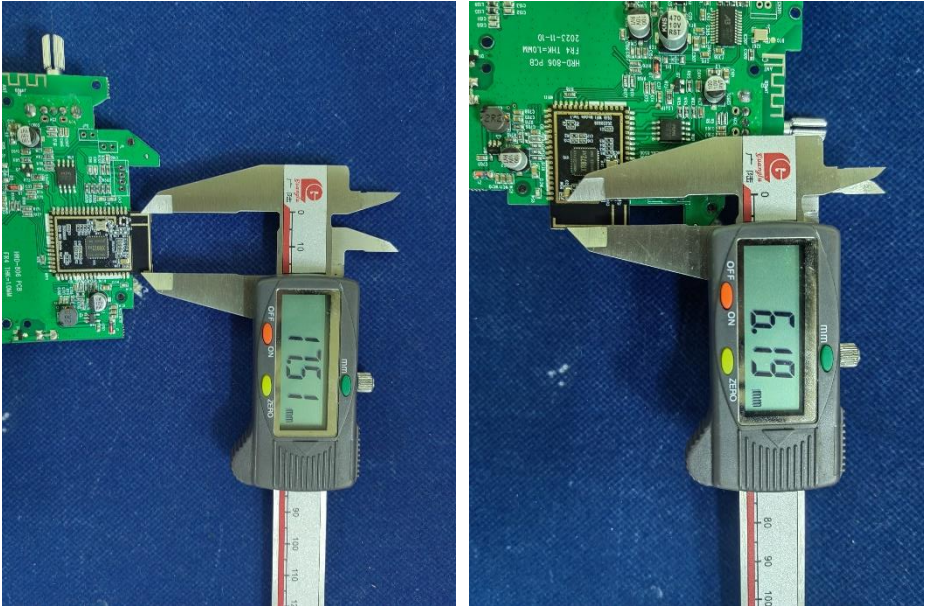


# 1. Antenna Description:

|                 |                                    |
|-----------------|------------------------------------|
| Antenna type    | PCB antenna                        |
| Model           | TR640                              |
| Frequency range | 2400-2500MHz                       |
| Manufacturer    | ZHENGZHOU YSAIR TECHNOLOGY CO.,LTD |
| ANT Peak Gain   | 1.10 dBi                           |

# 2. Antenna Photo:

Length :17.51mm  
Width:6.19mm



### 3. Test Equipment & Conditions

#### 3.1 Test instrument

VSWR is tested using Agilent E5071B connected to a hand mechanism, and the status is free space.

#### 3.2 Test environment and methods

Dark room specifications: ETS-743

TD-SCDMA test equipment: StarPoint SP6010/Agilent 8960

LTE-TDD/FDD-SCDMA test equipment: StarPoint SP8011/CMW500

WCDMA/GSM/CDMA test equipment: Agilent 8960

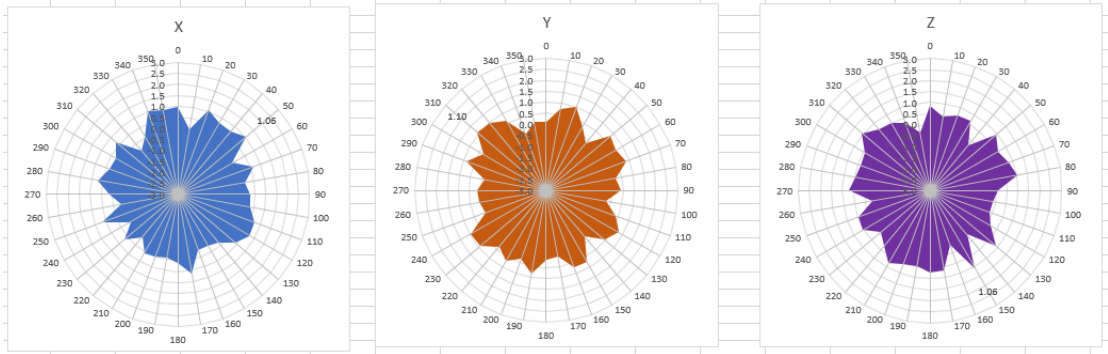
Passive efficiency testing equipment: Agilent Technologies E5071B



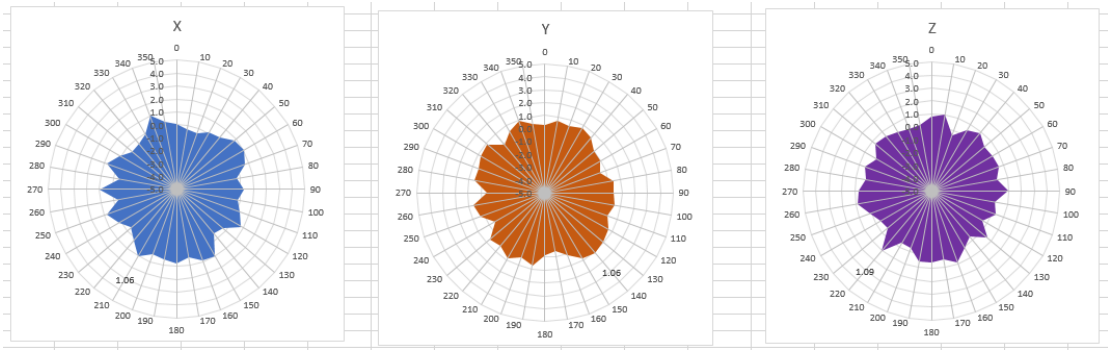
### 4 . Antenna Radiation Pattern



# 2400MHz



# 2450MHz



# 2500MHz

