

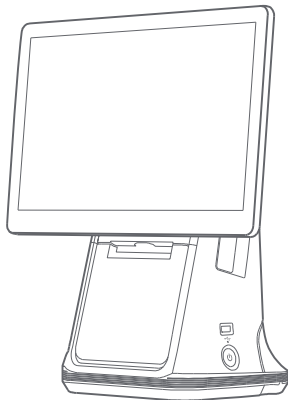


D4 Pro

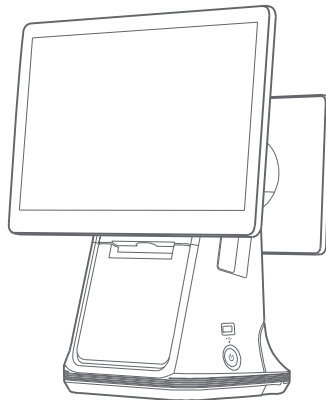
Model: I23D01

User Manual, Safety, Warranty and Info Guide

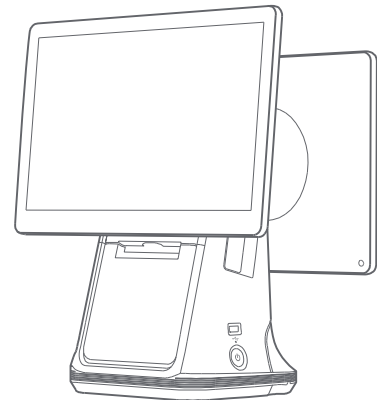
The device comes in 3 options below (camera optional)



15.6" LCD
(D4-503 Pro)



15.6" LCD + 10.1" LCD
(D4-504 Pro)



15.6" LCD + 15.6" LCD
(D4-505 Pro)

Easy Set Up

Turn on the device in just a few steps.

- 1 Press the power button and wait for the screen to light up showing the first boot up interface, then follow the prompts.

You may choose the following 2 internet access modes on this device.

- 2 Connecting to Wi-Fi or WLAN
 - Click on [Settings], turn on Wi-Fi to enter the WLAN search interface, and search available WLAN hotspots listing automatically.
 - Select the WLAN you wish to connect. If you chose an encrypted network, you need to enter the access password to connect successfully.

How to Download/ Use Apps

Launch Application Store under online mode to browse, download and complete installation for relevant Apps.

List of Pre-Installed Apps and System Programs

- Dual-screen Service • Dual-screen Setup • Public Wi-Fi • Starter Kit • OTA
- Calculator • Settings • Music • Download

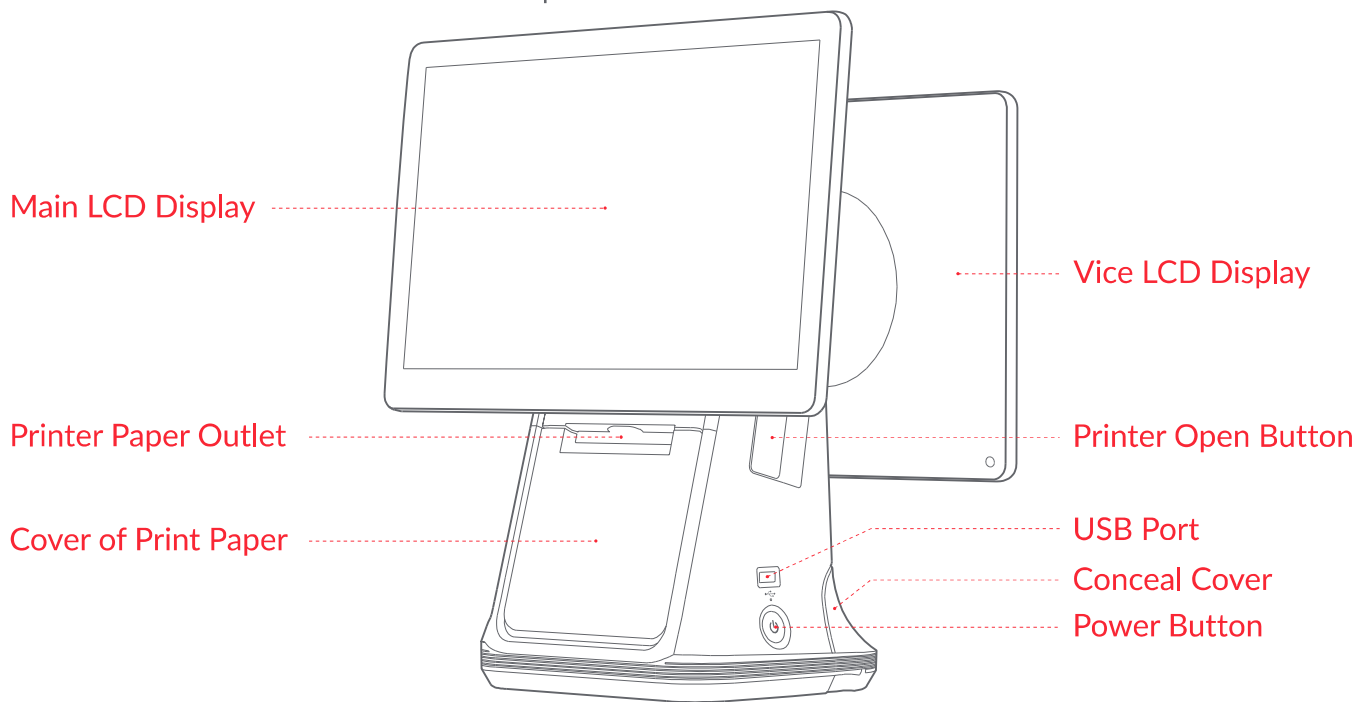
To learn more: Choose "Setup" -> "Application" and select the the application you wish to enquire about

To unload/ uninstall a specific application: Choose "Setup" -> "Application" -> "Management Application" -> "Unloading" to uninstall application. Alternatively, long press on application icon and drag it to the trash can to uninstall.

Launch the "Help" app on the device to learn more or refer to these steps again.

Brief Introduction

Take the 15.6" LCD + 15.6" LCD as an example



Main LCD Display

Provide touch screen for operator.

Power Button

Start up: Short press on button when machine is in power-off mode.

Power off/ restart: Long press on button 2-3 seconds to choose either option when machine is in power-on mode.

Power off (alternative): Press button for 11 seconds when machine is in power-on mode.

Paper Outlet of Printer

Printing receipt when power on.

Vice LCD Display (Customer-Facing)

Use this front-facing screen (optional, configuration specs varies) to display ads to customers.

Printer Open Button

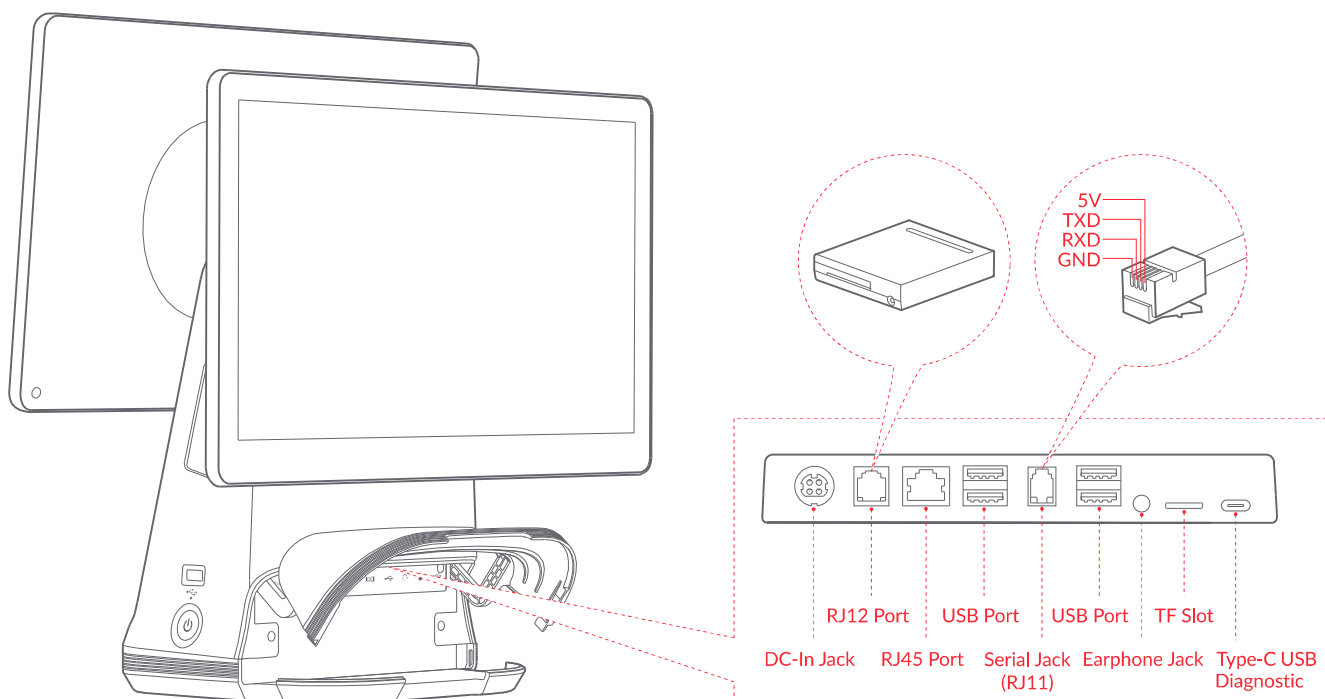
Open the cover of printer and replace printing paper.

Conceal Cover

Pull open to reveal connectors and cabling.

USB Port

For connecting printer or peripherals with USB Type-A interface.



DC-In Jack

For connecting power adapter.

RJ12 Port

For connecting external cash box (electrical pulse 120ms output instead of sustained power supply)

RJ45 Port

For connecting to internet or LAN.

USB Port

For connecting printer or peripherals with USB Type-A interface.

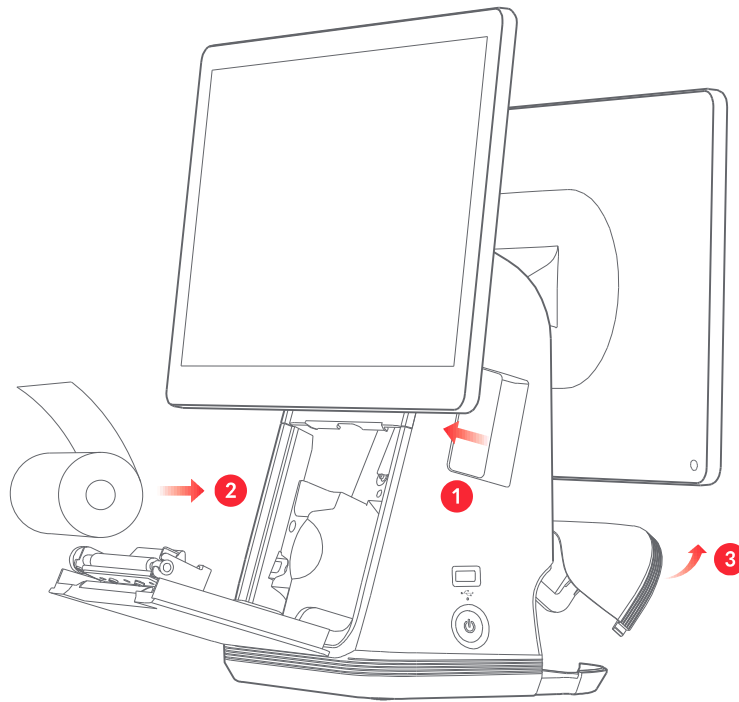
TF Slot

For inserting external TF card.

Type-C USB Diagnostic

For connecting diagnostic or debugging equipment.

Terminal Installation



1 Open The Paper Cover

Press the open button and the paper cover will pop up automatically.

2 Install Printing Paper

Put in 80mm thermal paper and pull out a section outside of the printing paper outlet, then close the cover again.

3 Connect Power Cable

Connect the power adapter to the DC in jack at the bottom of the host, plug the adapter into the AC socket.

Technical Specifications

OS	Android 13
CPU	Dual-core Cortex-A78 up to 2.2GHz & Hexa-core Cortex-A55up to 2.0GHz
Main LCD Display	15.6" resolution: FHD 1920 x 1080, Multi-points capacitive touch panel
Vice LCD Display	Options: 10.1" HD 800 x 1280 or 15.6" FHD 1920 x 1080
Memory/ Storage	4GB RAM (optional 8GB) + 64GB ROM (optional 128GB)
Wi-Fi	802.11 a/b/g/n/ac/ax (2.4GHz+5.0GHz)
Bluetooth	Bluetooth 5.3
Camera (optional)	External C5 module, Default None
Printer	80mm wide printer, diameter 80mm, with automatic cutter
Speaker	1 x 1.5W
External Interface	5 x USB Type-A, 1 x RJ11, 1 x RJ12 (24V), 1 x RJ45, 1 x Earphone, 1 x DC-In, 1 x USB Type-C
External SD Card	MicroSD (TF) up to 128GB
Power Adapter	Output power 60W, Input: AC100~240V/2.5A, Output: DC24V/2.5A
Operating Temperature	-10°C~+40°C
Storage Temperature	-10°C~+50°C
Humidity	Relative humidity < 85%, no condensation phenomenon
Altitude Limit	Below 5000 metres

Safety Information

Safety and Handling

- Please plug-in power adapter to only its corresponding AC socket.
 - Do not use in explosive gas atmosphere.
 - Do not disassemble the equipment. It should be serviced or recycled only by iMin or an authorised service provider.
 - This is a Grade B product. The product may cause radio interference and interfere with medical devices. The user may be required to take practical measures to reduce the possibility of causing interference to radios, televisions and other electronic devices.
 - About the battery replacement:
 1. Do not attempt to replace the battery yourself - you may damage the battery, which could cause overheating, fire and injury.
 2. The replaced/ used battery should be disposed according to local environmental laws and guidelines. Do not dispose in fire. It should be serviced or recycled by iMin or an authorised service provider, and must be recycled or disposed of separately from household waste.
-

Company Statement

Our company is not responsible for the following actions:

- Damage caused by misuse, lack of care in maintaining the equipment, or placing the device under conditions that may cause undesired operation and risk as specified in this instruction manual.
- We will not be responsible for any damage or problem caused by third party parts or components (other than the original products or approved products provided by us). Without our consent, you have no right to modify or alter the products.
- The operating system of this product is supported by official regular OS update. If the user breached the third party's ROM system or change the system file by hacking, it may cause unstable, undesired system operation and bring security risk.

Advices

- Do not expose the device to moisture, dampness, or wet weather, such as rain, snow or fog.
 - Do not use the device in extreme cold or hot environments eg, near a fire or lit cigarette.
 - Do not topple, throw, or bend.
 - Use in optimally clean and dust-free environment to avoid tiny particles clogging and seeping through gaps in the device.
 - Do not attempt to use the device near medical equipment.
-

Important Safety Information

- Do not install or use during thunder storms and lightning conditions, otherwise, there will be risk of electric shock, injury or death in the event of thunder or lightning hit.
 - If you find unusual odour, overheating or smoke, please cut off the power immediately.
 - Do not expose the device to moisture, dampness, or wet weather, such as rain, snow or fog; Do not use in explosive gas atmosphere.
-

Disclaimer

Due to regular updates and enhancements made to the product, some details of this document may be inconsistent with the physical product. Please take the product you received as current standard. The right to interpret this document belongs to our company. We reserve the right to amend this specification without prior notice.

FCC Warning

This device complies with part 15 of the FCC rules. Operation is subject to the following two conditions: (1) this device may not cause harmful interference, and (2) this device must accept any interference received, including interference that may cause undesired operation.

Changes or modifications not expressly approved by the party responsible for compliance could void the user's authority to operate the equipment.

NOTE: This equipment has been tested and found to comply with the limits for a Class B digital device, pursuant to part 15 of the FCC Rules. These limits are designed to provide reasonable protection against harmful interference in a residential installation. This equipment generates uses and can radiate radio frequency energy and, if not installed and used in accordance with the instructions, may cause harmful interference to radio communications. However, there is no guarantee that interference will not occur in a particular installation. If this equipment does cause harmful interference to radio or television reception, which can be determined by turning the equipment off and on, the user is encouraged to try to correct the interference by one or more of the following measures:

- Reorient or relocate the receiving antenna.
- Increase the separation between the equipment and receiver.
- Connect the equipment into an outlet on a circuit different from that to which the receiver is connected.
- Consult the dealer or an experienced radio/TV technician for help.

Radiation Exposure Statement

This equipment complies with FCC radiation exposure limits set forth for an uncontrolled environment. This equipment should be installed and operated with minimum distance 20cm between the radiator and your body.