

Carplay Instruction Manual

Carplay 说明手册

Please read this instruction manual carefully and keep it properly before you use the product.

使用本产品前，请仔细阅读本说明书并妥善保管

Thank you for your purchase. Please read the manual carefully before using the product, so you can use it correctly. We will consistently provide better products and services to customers!

感谢您的购买。在使用本产品之前，请仔细阅读本手册，以便正确使用。我们将一如既往地为客户提供更好的产品和服务！

E-Mail: support@vormor.cn

WhatsApp ID: 86 18820461144

WhatsApp QR code:



Preface

This product is only compatible with vehicles equipped with factory wired CarPlay. For information on how to check if your car is equipped with Apple CarPlay, please see the following pages.

Attention: Not all car models with built-in CarPlay can be fitted with this adapter. If you have any problems using this product, please do not hesitate to contact us. Best regards.

前言

本产品仅与配备工厂有线 CarPlay 的车辆兼容。有关如何检查您的汽车是否配备 Apple CarPlay 的信息，请参阅以下页面。

注意：并非所有内置 CarPlay 的车型都可以安装此适配器。如果您在使用本产品时有任何问题，请随时与我们联系。

Catalogue

目录

1.....	How to check if your car has wired CarPlay system
2.....	Accessories
3.....	Product specifications
4.....	Names and functions of the parts
5.....	Carplay connection method
6.....	How to download the application
7.....	Frequently Asked Questions
8.....	Warranty and Contact Details
1.....	如何检查您的汽车是否有有线 CarPlay 系统
2.....	配件
3.....	产品规格
4.....	部件名称和功能
5.....	Carplay 连接方法
6.....	如何下载应用程序
7.....	常见问题
8.....	保修和联系方式

1. How to check if your car has wired CarPlay system

如何检查您的汽车是否有有线 CarPlay 系统

This CarPlay AI box is only available for 2016 and newer cars that have original wired CarPlay. We urge you to check if your car has original wired CarPlay before you buy. To check if your car has original CarPlay, please refer to the following three methods.

(i) Check if there is a carplay icon on your car's audio system.
(ii) Using the original factory cable to connect your iPhone with the car's USB port. If the "Use carplay" pop-up window appears on your iPhone, that means the car has a carplay function.

(iii) You can also check with your dealer.

这款 CarPlay AI box 仅适用于 2016 年及更新具有原装有线 CarPlay 的车型。我们建议您在购买前检查您的汽车是否有原装有线 CarPlay。要检查您的汽车是否有原装有线 CarPlay，请参考以下三种方法。

(i) 检查您的汽车音响系统上是否有 carplay 图标。

(ii)使用原装线将iPhone与汽车的USB端口连接。如果iPhone上出现“Use carplay”弹出窗口，则表示汽车具有停车场功能。

(iii) 您也可以向经销商咨询。

2. Accessories

配件

CarPlay Box*1

USB Cable*2 (type A to type C, type C to type C)

User manual *1

CarPlay Box*1

USB 电缆*2 (type A to type C, type C to type C)

用户手册*1

3. Product Specifications

产品规格

CPU: QCM2290, quad-core 64-bit ARM

Cortex-A53 processor @ 2.0 GHz

OS: Android 11

Memory : 2GB LPDDR3 + 16GB eMMC

Wi-Fi : 2.4GWIFI, 802.11b/g/n

BT : 2.1 edr/3.0 hs

Operating Environment : -35 °C ~ +75 °C

Weight: 10 g

Expansion memory: Micro SD card (up to 128 GB)

4. Part Names And Functions

部件名称和功能

①TF card slot ②USB port

③Indicator light

④Reset button

① TF 卡槽②USB 端口

③ 指示灯

④ 重置按钮



5. Connection Method

连接方法

Reminder: This system only supports the original car models with wired Carplay!

提醒：此系统仅支持有线 Carplay 的车型！

Connect the vehicle USB port and the Carplay USB port with the USB cable. The indicator lights up and keeps on. (It takes about 20 seconds).

使用 USB 电缆连接车辆 USB 端口和 Carplay USB 端口。指示灯亮起并持续亮起(大约需要 20 秒)。

No need to worry:

When connecting for the first time, the engine needs to be restarted to adjust the resolution of the vehicle.

无需担心：

首次连接时，需要重新启动发动机以调整车辆的分辨率。

Bluetooth connection with smartphone

与智能手机的蓝牙连接

- **Wireless Carplay Connection (for iOS)**
- 无线 Carplay 连接（适用于 iOS）

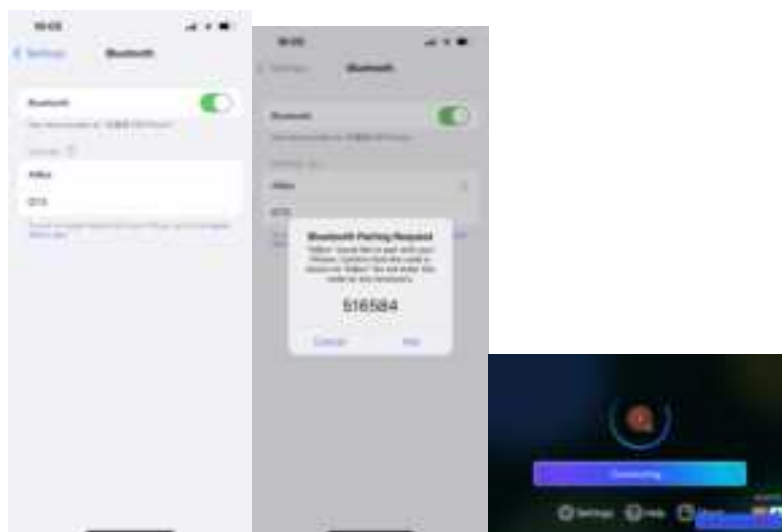
(1) **Tap [SpeedPlay]** at the bottom left of the screen.

（1）点击屏幕左下方的[SpeedPlay]。



(2) **Turn on the Bluetooth** of your iPhone, search for the “**AI-Box**” and connect.

打开 iPhone 的蓝牙，搜索“AI Box”并连接。



(3) If the connection is successful, a pop-up window will appear. Pair and tap "**Use CarPlay**" in the window to continue.

（3）如果连接成功，将出现一个弹出窗口。配对并点击窗口中的“Use CarPlay”

继续。



(If the connection is success, Bluetooth will automatically disconnect. The smartphone's Wi-Fi will then remain connected to the car's hotspot)

Note: Before using the car BlueTooth, you must disconnect the wireless CarPlay connection first.

（如果连接成功，蓝牙将自动断开。智能手机的 Wi-Fi 将保持与汽车热点的连接）

注意：在使用汽车蓝牙之前，必须先断开无线 CarPlay 连接。

(4) Wireless CarPlay Successfully Connection.

无线 CarPlay 成功连接。



- **Android Auto Connection (for Android devices)**

(Make sure you have the latest Android Auto app installed on your smartphone before using Android Auto)

Android Auto 连接（适用于 Android 设备）

（使用 Android Auto 之前，请确保您的智能手机上安装了最新的 Android Auto 应用程序）

(1) Tap “SpeedPlay” in the bottom left corner of the screen.

（1）轻触屏幕左下角的 SpeedPlay。



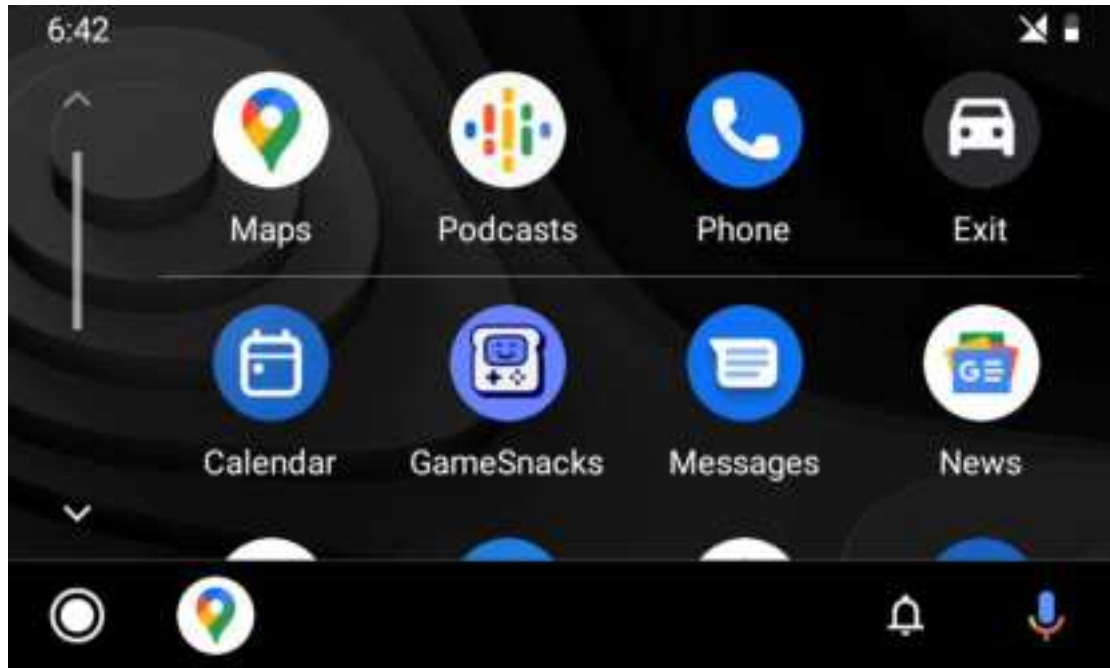
(2) Turn on your smartphone's Bluetooth, search for “AI-Box” and connect to it.

（2）打开智能手机的蓝牙，搜索 “AI Box” 并连接。



(3) Wireless CarPlay Successfully Connection.

（3）无线 CarPlay 成功连接。



Connect with WIFI

Go back to the home screen and click on Settings. Then connect to the network.

连接 WIFI

返回主屏幕并单击设置。然后连接到网络。

插入车机连接 WiFi 的图片



After connecting to WIFI, login to Google Play to download the app.

连接到 WIFI 后，登录 Google Play 下载应用程序。



7. Frequently asked questions

1. The device does not connect to the vehicle even when the engine is on:
 - ① Disconnect the device's cable and reconnection.
 - ② Turn off the Bluetooth and forget the Bluetooth, then reconnect it.
2. Wireless Carplay cannot connect to phone: Check if the smartphone Bluetooth turns on.
3. The device does not connect to car: Delete the connection record on the vehicle side and reconnect.

7.常见问题

- 1.即使在车启动的情况下，设备也不会连接到车辆：

- ① 断开设备电缆并重新连接。
- ② 关闭蓝牙并忘记蓝牙，然后重新连接。

- 2.无线 Carplay 无法连接到手机：检查智能手机蓝牙是否打开。

- 3.设备未连接到汽车：删除车辆的连接记录并重新连接。

8. Warranty & Contact

The warranty period for this product is one year from the date of purchase.

1. During the one-year warranty period from the date of purchase, we will provide free maintenance or replacement services according to the provisions of this manual only if the product fails due to normal use in accordance with the instruction manual and other precautions. (When you send the product, please attach the warranty card and send it to our customer support)

If the replacement is offer to you, the product you send back will become our property unless there are other special requirements.

2. Even within the warranty period, following cases will be charged for maintenance cost.

2.1 Do not follow the instruction manual and other precautions.

2.2 Failure or damage caused by unauthorized repairs or modifications not authorised by us.

2.3 Failure or damage caused by moving, falling, handling, transportation, etc. after the purchase.

2.4 Failure or damage caused by fire, earthquake, storm, flood and other natural disasters.

2.5 When no warranty do not provided to us.

2.6 The warranty card does not contain necessary information such as the date of purchase, the product serial number or the text of the warranty card is tampered.

2.7 When replacing consumables (battery, etc.).

2.8 If you are not the person who purchased the product (transfer, etc.)

3. The warranty card will not be supply again, please keep it properly to avoid loss.
4. The company is not responsible for any incidental damages (expenses required to use this product) or any claims from third parties arising from the use of the product or malfunction.
5. The warranty is only valid in United States.
6. The warranty guarantees free maintenance within the period and conditions specified in this manual. Therefore, this warranty does not limit the customer's legal rights to the person provide the warranty (warranty manager) and other businesses. If you have any questions about post-warranty repairs, please contact with the store where you purchased the product or customer support below.

8. 保修和联系

本产品的保修期为自购买之日起一年。

1. 在自购买之日起的一年保修期内，我们将根据本手册的规定提供免费维护或更换服务，前提是产品根据使用说明书和其他预防措施正常使用而出现故障。（当您发送产品时，请附上保修卡并将其发送给我们的客户支持）

如果我们向您提供了替代品，无其他特殊情况，您返回的产品将属于我们。

2. 即使在保修期内，以下情况也将收取维护费用。

2.1 不遵循说明书和其他预防措施。

2.2 未经我方授权的擅自维修或修改导致的故障或损坏。

2.3 购买后移动、坠落、搬运、运输等造成的故障或损坏。

2.4 火灾、地震、风暴、洪水和其他自然灾害造成的故障或损坏。

2.5 未向我方提供任何保修时。

2.6 保修卡不包含购买日期、产品序列号等必要信息或保修卡信息被篡改。

2.7 更换了消耗品（电池等）时。

2.8 如果您不是购买产品的人（转让等）

3. 保修卡将不再提供，请妥善保管，以免丢失。

4. 本公司不对因使用本产品或故障而产生的任何附带损害（使用本产品所需的费用）或第三方的任何索赔负责。

5. 保修仅在美国有效。

6.保修在本手册规定的期限和条件内进行免费维护。因此，本保修并不限制客户对提供保修的人员（保修经理）和其他业务的合法权利。如果您对保修期后的维修有任何疑问，请与您购买产品的商店或客户支持联系。

FCC Warning:

This equipment has been tested and found to comply with the limits for a Class B digital device, pursuant to part 15 of the FCC Rules. These limits are designed to provide reasonable protection against harmful interference in a residential installation. This equipment generates, uses and can radiate radio frequency energy and, if not installed and used in accordance with the instructions, may cause harmful interference to radio communications. However, there is no guarantee that interference will not occur in a particular installation. If this equipment does cause harmful interference to radio or television reception, which can be determined by turning the equipment off and on, the user is encouraged to try to correct the interference by one or more of the following measures:

- Reorient or relocate the receiving antenna.
- Increase the separation between the equipment and receiver.
- Connect the equipment into an outlet on a circuit different from that to which the receiver is connected.
- Consult the dealer or an experienced radio/TV technician for help.

Caution: Any changes or modifications to this device not explicitly approved by manufacturer could void your authority to operate this equipment.

This device complies with part 15 of the FCC Rules. Operation is subject to the following two conditions:

(1) This device may not cause harmful interference, and (2) this device must accept any interference received, including interference that may cause undesired operation.

This equipment complies with FCC radiation exposure limits set forth for an uncontrolled environment. This equipment should be installed and operated with minimum distance 20cm between the radiator and your body.