

DECLARATION OF COMPLIANCE SAR RF EXPOSURE EVALUATION

<p><u>Test Lab</u></p> <p>CELLTECH LABS INC. Testing and Engineering Services 1955 Moss Court Kelowna, B.C. Canada V1Y 9L3 Phone: 250-448-7047 Fax: 250-448-7046 e-mail: info@celltechlabs.com web site: www.celltechlabs.com</p>	<p><u>Applicant Information</u></p> <p>COBRA ELECTRONICS CORPORATION 6500 West Cortland Street Chicago, IL 60707 United States</p>
<p>FCC IDENTIFIER: IC IDENTIFIER: Model(s):</p>	<p>BBOPR250 906B-PR250 PR250 WX / PR590 WX</p>
<p>Rule Part(s): Test Procedure(s): Device Description: Modulation Type:</p>	<p>FCC 47 CFR §2.1093; IC RSS-102 Issue 1 (Provisional) FCC OET Bulletin 65, Supplement C (Edition 01-01) Portable UHF FRS/GMRS PTT Radio Transceiver FM (UHF)</p>
<p>Tx Frequency Range(s): Max. RF Output Power Tested: Antenna Type(s) Tested: Battery Type(s) Tested:</p>	<p>462.5500 - 462.7250 MHz (GMRS Channels 15-22) 462.5625 - 462.7125 MHz (FRS/GMRS Channels 1-7) 467.5625 - 467.7125 MHz (FRS Channels 8-14) 0.439 Watts ERP (GMRS 462.7125 MHz) Fixed Helical NiCd x4 (1.2 V AAA), Alkaline x4 (1.5 V AAA) Alkaline Type 1: Duracell Procell (1150 mAh) Alkaline Type 2: Energizer E92 (1250 mAh)</p>
<p>Body-Worn Accessories Tested:</p>	<p>Plastic Belt-Clip Generic Earbud with Lapel-Microphone</p>
<p>Max. SAR Level(s) Evaluated:</p>	<p>1.08 W/kg - Face-held (100% duty cycle) 0.991 W/kg - Body-worn (100% duty cycle)</p>

Celltech Labs Inc. declares under its sole responsibility that this wireless portable device has demonstrated compliance with the Specific Absorption Rate (SAR) RF exposure requirements specified in FCC 47 CFR §2.1093 and Health Canada's Safety Code 6. The device was tested in accordance with the measurement standards and procedures specified in FCC OET Bulletin 65, Supplement C (Edition 01-01) and Industry Canada RSS-102 Issue 1 (Provisional) for the General Population / Uncontrolled Exposure environment. All measurements were performed in accordance with the SAR system manufacturer recommendations.

I attest to the accuracy of data. All measurements were performed by me or were made under my supervision and are correct to the best of my knowledge and belief. I assume full responsibility for the completeness of these measurements and vouch for the qualifications of all persons taking them.

This test report shall not be reproduced partially, or in full, without the prior written approval of Celltech Labs Inc. The results and statements contained in this report pertain only to the device(s) evaluated.

Performed By:



Spencer Watson
Compliance Technologist
Celltech Labs Inc.

Reviewed By:



Russell W. Pipe
Senior Compliance Technologist
Celltech Labs Inc.



TABLE OF CONTENTS		
1.0	INTRODUCTION.....	3
2.0	DESCRIPTION OF DUT.....	3
3.0	SAR MEASUREMENT SYSTEM.....	4
4.0	MEASUREMENT SUMMARY.....	5
5.0	DETAILS OF SAR EVALUATION.....	6
6.0	EVALUATION PROCEDURES.....	6
7.0	SYSTEM PERFORMANCE CHECK.....	7
8.0	SIMULATED EQUIVALENT TISSUES.....	8
9.0	SAR SAFETY LIMITS.....	8
10.0	ROBOT SYSTEM SPECIFICATIONS.....	9
11.0	PROBE SPECIFICATION.....	10
12.0	PLANAR PHANTOM.....	10
13.0	VALIDATION PHANTOM.....	10
14.0	DEVICE HOLDER.....	10
15.0	TEST EQUIPMENT LIST.....	11
16.0	MEASUREMENT UNCERTAINTIES.....	12-13
17.0	REFERENCES.....	14
	APPENDIX A - SAR MEASUREMENT DATA.....	15
	APPENDIX B - SYSTEM PERFORMANCE CHECK DATA.....	16
	APPENDIX C - SYSTEM VALIDATION PROCEDURES.....	17
	APPENDIX D - PROBE CALIBRATION.....	18
	APPENDIX E - MEASURED FLUID DIELECTRIC PARAMETERS.....	19
	APPENDIX F - SAR TEST SETUP & DUT PHOTOGRAPHS.....	20

1.0 INTRODUCTION

This measurement report demonstrates compliance of the Cobra Electronics Corporation Model(s): PR250 WX / PR590 WX Portable UHF FRS/GMRS PTT Radio Transceiver FCC ID: BBOPR250 with the SAR (Specific Absorption Rate) RF exposure requirements specified in FCC 47 CFR §2.1093 (see reference [1]), and Health Canada's Safety Code 6 (see reference [2]) for the General Population / Uncontrolled Exposure environment. The test procedures described in FCC OET Bulletin 65, Supplement C (Edition 01-01) (see reference [3]) and IC RSS-102 Issue 1 (Provisional) (see reference [4]), were employed. A description of the product and operating configuration, detailed summary of the test results, methodology and procedures used in the evaluation, equipment used, and the provisions of the rules are included within this test report.

2.0 DESCRIPTION OF DEVICE UNDER TEST (DUT)

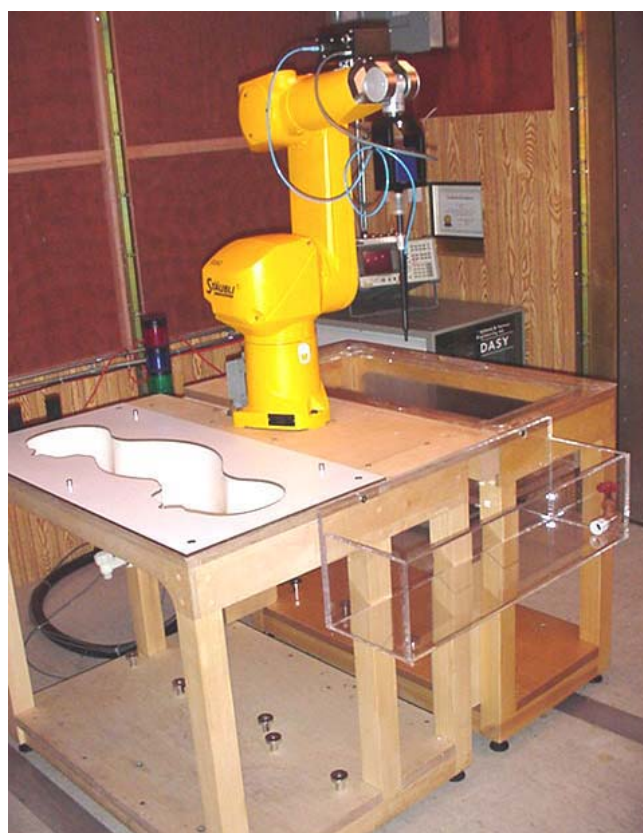
Rule Part(s)	FCC	47 CFR §2.1093	
	IC	RSS-102 Issue 1 Provisional)	
Test Procedure(s)	FCC OET Bulletin 65, Supplement C (01-01)		
Device Description	Portable UHF FRS/GMRS PTT Radio Transceiver		
FCC IDENTIFIER	BBOPR250		
IC IDENTIFIER	906B-PR250		
Model(s)	PR250 WX	PR590 WX	
Serial No.	412000025	Identical Prototype	
Modulation	FM (UHF)		
Tx Frequency Range(s)	462.5500 - 462.7250 MHz		GMRS Channels 15-22
	462.5625 - 462.7125 MHz		FRS/GMRS Channels 1-7
	467.5625 - 467.7125 MHz		FRS Channels 8-14
Max. RF Output Power Tested	0.439 Watts ERP		GMRS 462.7125 MHz
Battery Type(s) Tested	NiCd AAA (x4)	1.2 V	300 mAh
	Alkaline AAA (x4)	1.5 V	Duracell Procell 1150 mAh
			Energizer E92 1250 mAh
Antenna Type(s) Tested	Fixed Helical		
Body-Worn Accessories Tested	Plastic Belt-Clip		
	Generic Earbud with Lapel-Microphone		

3.0 SAR MEASUREMENT SYSTEM

Celltech Labs Inc. SAR measurement facility utilizes the Dosimetric Assessment System (DASY™) manufactured by Schmid & Partner Engineering AG (SPEAG™) of Zurich, Switzerland. The DASY4 measurement system is comprised of the measurement server, robot controller, computer, near-field probe, probe alignment sensor, specific anthropomorphic mannequin (SAM) phantom, and various planar phantoms for brain and/or body SAR evaluations. The robot is a six-axis industrial robot performing precise movements to position the probe to the location (points) of maximum electromagnetic field (EMF). A cell controller system contains the power supply, robot controller, teach pendant (Joystick), and remote control, is used to drive the robot motors. The Staubli robot is connected to the cell controller to allow software manipulation of the robot. A data acquisition electronic (DAE) circuit performs the signal amplification, signal multiplexing, AD-conversion, offset measurements, mechanical surface detection, collision detection, etc. is connected to the Electro-optical coupler (EOC). The EOC performs the conversion from the optical into digital electric signal of the DAE and transfers data to the DASY4 measurement server. The DAE4 utilizes a highly sensitive electrometer-grade preamplifier with auto-zeroing, a channel and gain-switching multiplexer, a fast 16-bit AD-converter and a command decoder and control logic unit. Transmission to the DASY4 measurement server is accomplished through an optical downlink for data and status information and an optical uplink for commands and clock lines. The mechanical probe-mounting device includes two different sensor systems for frontal and sidewise probe contacts. The sensor systems are also used for mechanical surface detection and probe collision detection. The robot uses its own controller with a built in VME-bus computer.



DASY4 SAR Measurement System with validation phantom



DASY4 SAR Measurement System with Plexiglas planar phantom

4.0 MEASUREMENT SUMMARY

SAR EVALUATION RESULTS

Test Type	Freq. (MHz)	Chan.	Test Mode	Battery Type	Antenna Position	Body-worn Accessory	Separation Distance to Planar Phantom (cm)	ERP Start Power (Watts)	Measured SAR 1g (W/kg)		SAR Drift During Test (dB)	Scaled SAR 1g (W/kg) with Drift - to 0.462 Watts ERP	
									Duty Cycle			Duty Cycle	
									100%	50%		100%	50%
Face	462.7125	7	CW	NiCd	Fixed	-	2.5	0.439	0.613	0.307	-0.404	0.696	0.348
Face	462.7125	7	CW	Duracell Alkaline	Fixed	-	2.5	0.439	0.820	0.410	-0.744	0.996	0.498
Face	462.7125	7	CW	Energizer Alkaline	Fixed	-	2.5	0.439	0.856	0.428	-0.909	1.08	0.540
Body	462.7125	7	CW	NiCd	Fixed	Ear-Mic Belt-Clip	0.5	0.439	0.865	0.433	-0.488	0.991	0.496
Body	462.7125	7	CW	Duracell Alkaline	Fixed	Ear-Mic Belt-Clip	0.5	0.439	0.760	0.380	-0.709	0.918	0.459

ANSI / IEEE C95.1 1999 - SAFETY LIMIT
BRAIN / BODY: 1.6 W/kg (averaged over 1 gram)
Spatial Peak - Uncontrolled Exposure / General Population

Test Date(s)	January 13, 2005			January 13, 2005			Measured Fluid Type	Brain	Body	Unit
Dielectric Constant ϵ_r	450 MHz Brain			450 MHz Body			Atmospheric Pressure	103.4	103.4	kPa
	IEEE Target		Measured	IEEE Target		Measured	Relative Humidity	30	30	%
	43.5	$\pm 5\%$	42.8	56.7	$\pm 5\%$	56.8	Ambient Temperature	23.5	23.5	°C
Conductivity σ (mho/m)	450 MHz Brain			450 MHz Body			Fluid Temperature	22.2	22.1	°C
	IEEE Target		Measured	IEEE Target		Measured	Fluid Depth	≥ 15	≥ 15	cm
	0.87	$\pm 5\%$	0.85	0.94	$\pm 5\%$	0.91	ρ (Kg/m ³)	1000		

Note(s):

- The measurement results were obtained with the DUT tested in the conditions described in this report. Detailed measurement data and plots showing the maximum SAR location of the DUT are reported in Appendix A.
- The transmission band of the DUT is less than 10 MHz, therefore mid channel data only is reported (per FCC OET Bulletin 65, Supplement C, Edition 01-01 - see reference [3]).
- The DUT was evaluated for SAR with Duracell Procell alkaline batteries. To report a SAR comparison between alternate alkaline battery types, the maximum scaled SAR level configuration evaluated with Duracell Procell alkaline batteries (face-held) was repeated using Energizer E92 alkaline batteries as shown in the above table.
- The power drifts measured by the DASY4 system for the duration of the SAR evaluations were added to the measured SAR levels to report scaled SAR results as shown in the above test data table. The SAR levels were also scaled up to 0.462 Watts ERP based on the maximum ERP level measured by the EMC test lab.
- A SAR-versus-Time power drift evaluation was performed in the test configuration that reported the maximum-scaled SAR level (face-held, Energizer E92 alkaline batteries). See Appendix A (SAR Test Plots) for SAR-versus-Time power drift evaluation plot.
- The ambient and fluid temperatures were measured prior to, and during, the fluid dielectric parameter check and the SAR evaluation. The temperatures reported were consistent for all measurement periods.
- The dielectric parameters of the simulated tissues were measured prior to the evaluation using an HP 85070C Dielectric Probe Kit and an HP 8753E Network Analyzer (see Appendix E for printout of measured fluid dielectric parameters).
- The SAR evaluations were performed within 24 hours of the system performance check.

5.0 DETAILS OF SAR EVALUATION

The Cobra Electronics Corporation Model(s): PR250 WX / PR590 WX Portable UHF FRS/GMRS PTT Radio Transceiver FCC ID: BBOPR250 was compliant for localized Specific Absorption Rate (General Population / Uncontrolled Exposure) based on the test provisions and conditions described below. The detailed test setup photographs are shown in Appendix F.

- The DUT was evaluated in a face-held configuration with the front of the radio placed parallel to the outer surface of the planar phantom. A 2.5 cm separation distance was maintained between the front side of the DUT and the outer surface of the planar phantom.
- The DUT was tested in a body-worn configuration with the back of the radio placed parallel to the outer surface of the planar phantom. The attached belt-clip accessory was touching the planar phantom and provided a 0.5 cm separation distance from the back of the DUT to the outer surface of the planar phantom. The DUT was evaluated for body-worn SAR with the earbud/lapel-microphone accessory connected to the audio port.
- The conducted output power of the DUT could not be measured for the SAR evaluation due to a non-detachable antenna. The DUT was evaluated for SAR at the maximum conducted power level preset by the manufacturer.
- The DUT was evaluated for SAR at the maximum ERP level measured prior to the SAR evaluation on a 3-meter Open Area Test Site using the signal substitution method in accordance with ANSI/TIA-603-C-2004 (see reference [6]).
- The power drifts measured by the DASY4 system during the SAR evaluations were added to the measured SAR levels to report scaled SAR results as shown in the test data table (page 5). The SAR levels were also scaled up by 5% to 0.462 Watts ERP based on the maximum ERP level measured by the EMC test lab.
- A SAR-versus-Time power drift evaluation was performed in the test configuration that reported the maximum scaled SAR level. See Appendix A (SAR Test Plots) for SAR-versus-Time power drift evaluation plot.
- The area scan evaluation was performed with fully charged batteries. After the area scan was completed the radio was cooled down and the batteries were replaced with fully charged batteries prior to the zoom scan evaluation.
- The DUT was tested in unmodulated continuous transmit operation (Continuous Wave mode at 100% duty cycle) with the transmit key constantly depressed. For a push-to-talk device the 50% duty cycle compensation reported assumes a transmit/receive cycle of equal time base.
- The SAR evaluations were performed using a Plexiglas planar phantom.

6.0 EVALUATION PROCEDURES

- (i) The evaluation was performed in the applicable area of the phantom depending on the type of device being tested. For devices held to the ear during normal operation, both the left and right ear positions were evaluated using the SAM phantom.
(ii) For body-worn and face-held devices a planar phantom was used.
- The SAR was determined by a pre-defined procedure within the DASY4 software. Upon completion of a reference and optical surface check, the exposed region of the phantom was scanned near the inner surface with a grid spacing of 15mm x 15mm.
An area scan was determined as follows:
 - Based on the defined area scan grid, a more detailed grid is created to increase the points by a factor of 10. The interpolation function then evaluates all field values between corresponding measurement points.
 - A linear search is applied to find all the candidate maxima. Subsequently, all maxima are removed that are >2 dB from the global maximum. The remaining maxima are then used to position the cube scans.
A 1g and 10g spatial peak SAR was determined as follows:
- Extrapolation is used to find the points between the dipole center of the probe and the surface of the phantom. This data cannot be measured, since the center of the dipoles is 2.7 mm away from the tip of the probe and the distance between the surface and the lowest measuring point is 1.4 mm (see probe calibration document in Appendix D). The extrapolation was based on trivariate quadratics computed from the previously calculated 3D interpolated points nearest the phantom surface.
- Interpolated data is used to calculate the average SAR over 1g and 10g cubes by spatially discretizing the entire measured cube. The volume used to determine the averaged SAR is a 1mm grid (42875 interpolated points).
- A zoom scan volume of 32 mm x 32 mm x 30 mm (5 x 5 x 7 points) centered at the peak SAR location determined from the area scan is used for all zoom scans for devices with a transmit frequency < 800 MHz. Zoom scans for frequencies ≥ 800 MHz are determined with a scan volume of 30 mm x 30 mm x 30 mm (7 x 7 x 7) to ensure complete capture of the peak spatial-average SAR.

7.0 SYSTEM PERFORMANCE CHECK

Prior to the SAR evaluation a system check was performed using a Plexiglas planar phantom and 450MHz dipole (see Appendix C for system validation procedures). The dielectric parameters of the simulated tissue mixture were measured prior to the system performance check using an HP 85070C Dielectric Probe Kit and HP 8753E Network Analyzer (see Appendix E for printout of measured fluid dielectric parameters). A forward power of 250mW was applied to the dipole and the system was verified to a tolerance of $\pm 10\%$ (see Appendix B for system performance check test plot).

SYSTEM PERFORMANCE CHECK													
Test Date	450MHz Equiv. Tissue	SAR 1g (W/kg)		Dielectric Constant ϵ_r		Conductivity σ (mho/m)		ρ (Kg/m ³)	Amb. Temp. (°C)	Fluid Temp. (°C)	Fluid Depth (cm)	Humid. (%)	Barom. Press. (kPa)
		IEEE Target	Measured	IEEE Target	Measured	IEEE Target	Measured						
01/12/05	Brain	1.23 ($\pm 10\%$)	1.29 (+4.9%)	43.5 $\pm 5\%$	42.0	0.87 $\pm 5\%$	0.83	1000	23.3	21.5	≥ 15	30	101.8

Note(s):

1. The ambient and fluid temperatures were measured prior to, and during, the fluid dielectric parameter check and the system performance check. The temperatures listed in the table above were consistent for all measurement periods.

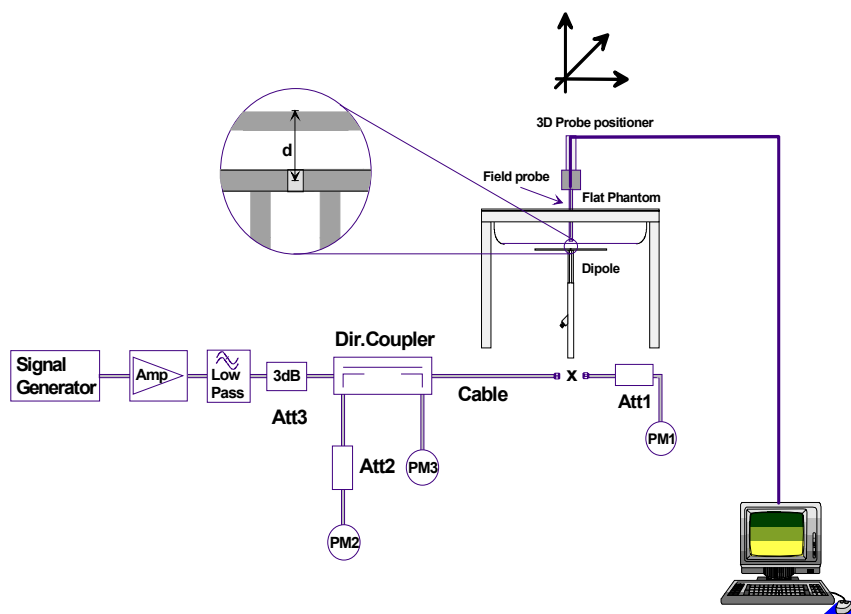


Figure 1. System Performance Check Setup Diagram



450 MHz Dipole Setup

8.0 SIMULATED EQUIVALENT TISSUES

The 450MHz simulated tissue mixtures consist of a viscous gel using hydroxethylcellulose (HEC) gelling agent and saline solution. Preservation with a bactericide is added and visual inspection is made to ensure air bubbles are not trapped during the mixing process. The fluid was prepared according to standardized procedures, and measured for dielectric parameters (permittivity and conductivity).

SIMULATED TISSUE MIXTURES		
INGREDIENT	450 MHz Brain	450 MHz Body
	System Check & DUT Evaluation	DUT Evaluation
Water	38.56 %	52.00 %
Sugar	56.32 %	45.65 %
Salt	3.95 %	1.75 %
HEC	0.98 %	0.50 %
Bactericide	0.19 %	0.10 %

9.0 SAR SAFETY LIMITS

EXPOSURE LIMITS	SAR (W/kg)	
	(General Population / Uncontrolled Exposure Environment)	(Occupational / Controlled Exposure Environment)
Spatial Average (averaged over the whole body)	0.08	0.4
Spatial Peak (averaged over any 1g of tissue)	1.60	8.0
Spatial Peak (hands/wrists/feet/ankles averaged over 10g)	4.0	20.0

Notes:

1. Uncontrolled environments are defined as locations where there is potential exposure of individuals who have no knowledge or control of their potential exposure.
2. Controlled environments are defined as locations where there is potential exposure of individuals who have knowledge of their potential exposure and can exercise control over their exposure.

10.0 ROBOT SYSTEM SPECIFICATIONS

Specifications

POSITIONER: Stäubli Unimation Corp. Robot Model: RX60L
Repeatability: 0.02 mm
No. of axis: 6

Data Acquisition Electronic (DAE) System

Cell Controller

Processor: AMD Athlon XP 2400+
Clock Speed: 2.0 GHz
Operating System: Windows XP Professional

Data Converter

Features: Signal Amplifier, multiplexer, A/D converter, and control logic
Software: DASY4 software
Connecting Lines: Optical downlink for data and status info.
 Optical uplink for commands and clock

DASY4 Measurement Server

Function: Real-time data evaluation for field measurements and surface detection
Hardware: PC/104 166MHz Pentium CPU; 32 MB chipdisk; 64 MB RAM
Connections: COM1, COM2, DAE, Robot, Ethernet, Service Interface

E-Field Probe

Model: ET3DV6
Serial No.: 1387
Construction: Triangular core fiber optic detection system
Frequency: 10 MHz to 6 GHz
Linearity: ± 0.2 dB (30 MHz to 3 GHz)

Phantom(s)

Evaluation Phantom

Type: Planar Phantom
Shell Material: Plexiglas
Bottom Thickness: 2.0 mm \pm 0.1 mm
Outer Dimensions: 75.0 cm (L) x 22.5 cm (W) x 20.5 cm (H); Back Plane: 25.7 cm (H)

Validation Phantom (≤ 450 MHz)

Type: Planar Phantom
Shell Material: Plexiglas
Bottom Thickness: 6.2 mm \pm 0.1 mm
Outer Dimensions: 86.0 cm (L) x 39.5 cm (W) x 21.8 cm (H)

11.0 PROBE SPECIFICATION (ET3DV6)

Construction:	Symmetrical design with triangular core Built-in shielding against static charges PEEK enclosure material (resistant to organic solvents, e.g. glycol)
Calibration:	In air from 10 MHz to 2.5 GHz In brain simulating tissue at frequencies of 900 MHz and 1.8 GHz (accuracy $\pm 8\%$)
Frequency:	10 MHz to > 6 GHz; Linearity: ± 0.2 dB (30 MHz to 3 GHz)
Directivity:	± 0.2 dB in brain tissue (rotation around probe axis) ± 0.4 dB in brain tissue (rotation normal to probe axis)
Dynamic Range:	5 μ W/g to > 100 mW/g; Linearity: ± 0.2 dB
Surface Detection:	± 0.2 mm repeatability in air and clear liquids over diffuse reflecting surfaces
Dimensions:	Overall length: 330 mm Tip length: 16 mm Body diameter: 12 mm Tip diameter: 6.8 mm Distance from probe tip to dipole centers: 2.7 mm
Application:	General dosimetry up to 3 GHz Compliance tests of mobile phone



ET3DV6 E-Field Probe

12.0 PLANAR PHANTOM

The planar phantom is constructed of Plexiglas material with a 2.0 mm shell thickness for face-held and body-worn SAR evaluations of handheld radio transceivers. The planar phantom is mounted on the side of the DASY4 compact system table.



Plexiglas Planar Phantom

13.0 VALIDATION PLANAR PHANTOM

The validation planar phantom is constructed of Plexiglas material with a 6.0 mm shell thickness for SAR validations at 450MHz and below. The validation planar phantom is mounted in the table of the DASY4 compact system.




Validation Planar Phantom

14.0 DEVICE HOLDER

The DASY4 device holder has two scales for device rotation (with respect to the body axis) and the device inclination (with respect to the line between the ear openings). The plane between the ear openings and the mouth tip has a rotation angle of 65° . The bottom plate contains three pair of bolts for locking the device holder. The device holder positions are adjusted to the standard measurement positions in the three sections.



Device Holder

Applicant:	Cobra Electronics Corporation		FCC ID:	BBOPR250	IC ID:	906B-PR250
Model(s):	PR250WX / PR590WX	Portable UHF FRS/GMRS PTT Radio Transceiver		462.5500 - 467.7125 MHz		
2005 Celltech Labs Inc.		This document is not to be reproduced in whole or in part without the written permission of Celltech Labs Inc.				10 of 20

15.0 TEST EQUIPMENT LIST

TEST EQUIPMENT	SERIAL NO.	DATE CALIBRATED	CALIBRATION DUE DATE
Schmid & Partner DASY4 System	-	-	-
-DASY4 Measurement Server	1078	N/A	N/A
-Robot	599396-01	N/A	N/A
-DAE3	353	July 2004	July 2005
-DAE3	370	May 2004	May 2005
-ET3DV6 E-Field Probe	1387	March 2004	March 2005
-ET3DV6 E-Field Probe	1590	May 2004	May 2005
-300MHz Validation Dipole	135	October 2004	October 2005
-450MHz Validation Dipole	136	November 2004	November 2005
-835MHz Validation Dipole	411	March 2004	March 2005
-900MHz Validation Dipole	054	June 2004	June 2005
-1800MHz Validation Dipole	247	June 2004	June 2005
-1900MHz Validation Dipole	151	June 2004	June 2005
-2450MHz Validation Dipole	150	September 2004	September 2005
-SAM Phantom V4.0C	1033	N/A	N/A
-Barski Planar Phantom	03-01	N/A	N/A
-Plexiglas Planar Phantom	161	N/A	N/A
-Validation Planar Phantom	137	N/A	N/A
HP 85070C Dielectric Probe Kit	N/A	N/A	N/A
Gigatronics 8651A Power Meter	8650137	April 2004	April 2005
Gigatronics 8652A Power Meter	1835267	April 2004	April 2005
Gigatronics 80701A Power Sensor	1833535	April 2004	April 2005
Gigatronics 80701A Power Sensor	1833542	April 2004	April 2005
Gigatronics 80701A Power Sensor	1834350	April 2004	April 2005
HP 8594E Spectrum Analyzer	3543A02721	April 2004	April 2005
HP 8753E Network Analyzer	US38433013	April 2004	April 2005
HP 8648D Signal Generator	3847A00611	April 2004	April 2005
Amplifier Research 5S1G4 Power Amplifier	26235	N/A	N/A

16.0 MEASUREMENT UNCERTAINTIES

UNCERTAINTY BUDGET FOR DEVICE EVALUATION						
Error Description	Uncertainty Value $\pm\%$	Probability Distribution	Divisor	C_i 1g	Standard Uncertainty $\pm\%$ (1g)	V_i or V_{eff}
Measurement System						
Probe calibration	± 4.0	Normal	1	1	± 4.0	∞
Axial isotropy of the probe	± 4.7	Rectangular	$\sqrt{3}$	$(1-c_p)$	± 1.9	∞
Spherical isotropy of the probe	± 9.6	Rectangular	$\sqrt{3}$	(c_p)	± 3.9	∞
Spatial resolution	± 0.0	Rectangular	$\sqrt{3}$	1	± 0.0	∞
Boundary effects	± 5.5	Rectangular	$\sqrt{3}$	1	± 3.2	∞
Probe linearity	± 4.7	Rectangular	$\sqrt{3}$	1	± 2.7	∞
Detection limit	± 1.0	Rectangular	$\sqrt{3}$	1	± 0.6	∞
Readout electronics	± 1.0	Normal	1	1	± 1.0	∞
Response time	± 0.8	Rectangular	$\sqrt{3}$	1	± 0.5	∞
Integration time	± 1.4	Rectangular	$\sqrt{3}$	1	± 0.8	∞
RF ambient conditions	± 3.0	Rectangular	$\sqrt{3}$	1	± 1.7	∞
Mech. constraints of robot	± 0.4	Rectangular	$\sqrt{3}$	1	± 0.2	∞
Probe positioning	± 2.9	Rectangular	$\sqrt{3}$	1	± 1.7	∞
Extrapolation & integration	± 3.9	Rectangular	$\sqrt{3}$	1	± 2.3	∞
Test Sample Related						
Device positioning	± 6.0	Normal	$\sqrt{3}$	1	± 6.7	12
Device holder uncertainty	± 5.0	Normal	$\sqrt{3}$	1	± 5.9	8
Power drift	± 5.0	Rectangular	$\sqrt{3}$		± 2.9	∞
Phantom and Setup						
Phantom uncertainty	± 4.0	Rectangular	$\sqrt{3}$	1	± 2.3	∞
Liquid conductivity (target)	± 5.0	Rectangular	$\sqrt{3}$	0.6	± 1.7	∞
Liquid conductivity (measured)	± 5.0	Rectangular	$\sqrt{3}$	0.6	± 1.7	∞
Liquid permittivity (target)	± 5.0	Rectangular	$\sqrt{3}$	0.6	± 1.7	∞
Liquid permittivity (measured)	± 5.0	Rectangular	$\sqrt{3}$	0.6	± 1.7	∞
Combined Standard Uncertainty					± 13.03	
Expanded Uncertainty (k=2)					± 26.07	

Measurement Uncertainty Table in accordance with IEEE Standard 1528-2003 (see reference [5])

MEASUREMENT UNCERTAINTIES (Cont.)

UNCERTAINTY BUDGET FOR SYSTEM VALIDATION						
Error Description	Uncertainty Value $\pm\%$	Probability Distribution	Divisor	C_i 1g	Standard Uncertainty $\pm\%$ (1g)	v_i or v_{eff}
Measurement System						
Probe calibration	± 4.0	Normal	1	1	± 4.0	∞
Axial isotropy of the probe	± 4.7	Rectangular	$\sqrt{3}$	$(1-c_p)$	± 1.9	∞
Spherical isotropy of the probe	± 9.6	Rectangular	$\sqrt{3}$	(c_p)	± 3.9	∞
Spatial resolution	± 0.0	Rectangular	$\sqrt{3}$	1	± 0.0	∞
Boundary effects	± 5.5	Rectangular	$\sqrt{3}$	1	± 3.2	∞
Probe linearity	± 4.7	Rectangular	$\sqrt{3}$	1	± 2.7	∞
Detection limit	± 1.0	Rectangular	$\sqrt{3}$	1	± 0.6	∞
Readout electronics	± 1.0	Normal	1	1	± 1.0	∞
Response time	± 0.8	Rectangular	$\sqrt{3}$	1	± 0.5	∞
Integration time	± 1.4	Rectangular	$\sqrt{3}$	1	± 0.8	∞
RF ambient conditions	± 3.0	Rectangular	$\sqrt{3}$	1	± 1.7	∞
Mech. constraints of robot	± 0.4	Rectangular	$\sqrt{3}$	1	± 0.2	∞
Probe positioning	± 2.9	Rectangular	$\sqrt{3}$	1	± 1.7	∞
Extrapolation & integration	± 3.9	Rectangular	$\sqrt{3}$	1	± 2.3	∞
Dipole						
Dipole Axis to Liquid Distance	± 2.0	Rectangular	$\sqrt{3}$	1	± 1.2	∞
Input Power	± 4.7	Rectangular	$\sqrt{3}$	1	± 2.7	∞
Phantom and Setup						
Phantom uncertainty	± 4.0	Rectangular	$\sqrt{3}$	1	± 2.3	∞
Liquid conductivity (target)	± 5.0	Rectangular	$\sqrt{3}$	0.6	± 1.7	∞
Liquid conductivity (measured)	± 5.0	Rectangular	$\sqrt{3}$	0.6	± 1.7	∞
Liquid permittivity (target)	± 5.0	Rectangular	$\sqrt{3}$	0.6	± 1.7	∞
Liquid permittivity (measured)	± 5.0	Rectangular	$\sqrt{3}$	0.6	± 1.7	∞
Combined Standard Uncertainty						
					± 9.58	
Expanded Uncertainty (k=2)						
					± 19.16	


Measurement Uncertainty Table in accordance with IEEE Standard 1528-2003 (see reference [5])

17.0 REFERENCES

- [1] Federal Communications Commission, "Radiofrequency radiation exposure evaluation: portable devices", Rule Part 47 CFR §2.1093: 1999.
- [2] Health Canada, "Limits of Human Exposure to Radiofrequency Electromagnetic Fields in the Frequency Range from 3 kHz to 300 GHz", Safety Code 6.
- [3] Federal Communications Commission, "Evaluating Compliance with FCC Guidelines for Human Exposure to Radio frequency Electromagnetic Fields", OET Bulletin 65, Supplement C (Edition 01-01), FCC, Washington, D.C.: June 2001.
- [4] Industry Canada, "Evaluation Procedure for Mobile and Portable Radio Transmitters with respect to Health Canada's Safety Code 6 for Exposure of Humans to Radio Frequency Fields", Radio Standards Specification RSS-102 Issue 1 (Provisional): September 1999.
- [5] IEEE Standard 1528-2003, "Recommended Practice for Determining the Peak Spatial-Average Specific Absorption Rate (SAR) in the Human Head from Wireless Communications Devices: Measurement Techniques": June 2003.
- [6] ANSI/TIA-603-C, "Land Mobile FM or PM Communications Equipment - Measurement and Performance Standards": December 2004.

Test Report S/N:	010405BBO-T608-S95U
Test Date(s):	January 12-13, 2005
Test Type:	FCC/IC SAR Evaluation

APPENDIX A - SAR MEASUREMENT DATA

Applicant:	Cobra Electronics Corporation	FCC ID:	BBOPR250	IC ID:	906B-PR250
Model(s):	PR250WX / PR590WX	Portable UHF FRS/GMRS PTT Radio Transceiver	462.5500 - 467.7125 MHz		
2005 Celltech Labs Inc.		This document is not to be reproduced in whole or in part without the written permission of Celltech Labs Inc.			15 of 20

Date Tested: 01/13/05

Face-Held SAR - NiCd AAA Batteries

DUT: Cobra Model: PR250 WX; Type: Portable UHF FRS/GMRS PTT Radio Transceiver; Serial: 412000025

Ambient Temp: 23.5 °C; Fluid Temp: 22.2 °C; Barometric Pressure: 103.4 kPa; Humidity: 30%

Communication System: FM UHF

RF Output Power: 0.439 Watts (ERP)

Frequency: 462.7125 MHz; Duty Cycle: 1:1

1.2V 300mAh NiCd AAA Batteries (x4)

Medium: HSL450 ($\sigma = 0.85$ mho/m; $\epsilon_r = 42.8$; $\rho = 1000$ kg/m³)

- Probe: ET3DV6 - SN1387; ConvF(7.5, 7.5, 7.5); Calibrated: 18/03/2004
- Sensor-Surface: 4mm (Mechanical Surface Detection)
- Electronics: DAE3 Sn353; Calibrated: 06/07/2004
- Phantom: Planar; Type: Plexiglas; Serial: 161
- Measurement SW: DASY4, V4.3 Build 22; Postprocessing SW: SEMCAD, V1.8 Build 127

Face-Held - 2.5 cm Separation Distance/Area Scan (8x12x1):

Measurement grid: dx=15mm, dy=15mm

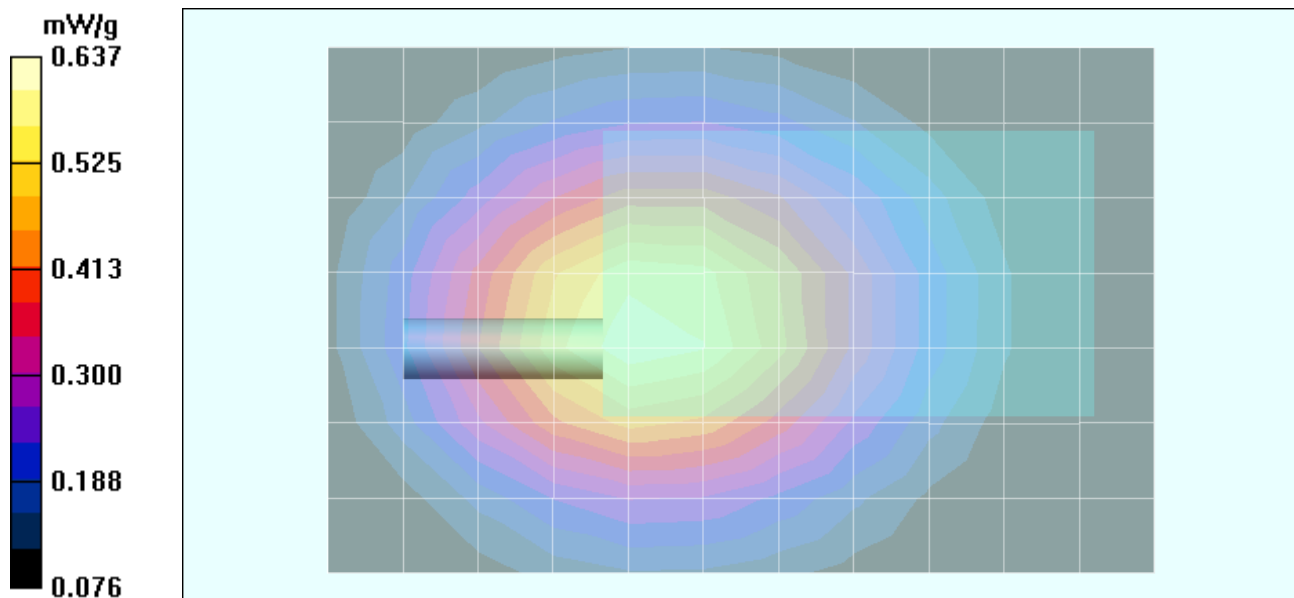
Face-Held - 2.5 cm Separation Distance/Zoom Scan (5x5x7)/Cube 0:

Measurement grid: dx=7.5mm, dy=7.5mm, dz=5mm

Reference Value = 26.1 V/m; Power Drift = -0.404 dB

Peak SAR (extrapolated) = 0.958 W/kg

SAR(1 g) = 0.613 mW/g; SAR(10 g) = 0.428 mW/g



Date Tested: 01/13/05

Face-Held SAR - Alkaline AAA Batteries (Duracell Procell)

DUT: Cobra Model: PR250 WX; Type: Portable UHF FRS/GMRS PTT Radio Transceiver; Serial: 412000025

Ambient Temp: 23.5 °C; Fluid Temp: 22.2 °C; Barometric Pressure: 103.4 kPa; Humidity: 30%

Communication System: FM UHF

RF Output Power: 0.439 Watts (ERP)

Frequency: 462.7125 MHz; Duty Cycle: 1:1

1.5V 1150mAh Duracell ProCell AAA Alkaline Batteries (x4)

Medium: HSL450 ($\sigma = 0.85$ mho/m; $\epsilon_r = 42.8$; $\rho = 1000$ kg/m³)

- Probe: ET3DV6 - SN1387; ConvF(7.5, 7.5, 7.5); Calibrated: 18/03/2004
- Sensor-Surface: 4mm (Mechanical Surface Detection)
- Electronics: DAE3 Sn353; Calibrated: 06/07/2004
- Phantom: Planar; Type: Plexiglas; Serial: 161
- Measurement SW: DASY4, V4.3 Build 22; Postprocessing SW: SEMCAD, V1.8 Build 127

Face-Held - 2.5 cm Separation Distance/Area Scan (8x12x1):

Measurement grid: dx=15mm, dy=15mm

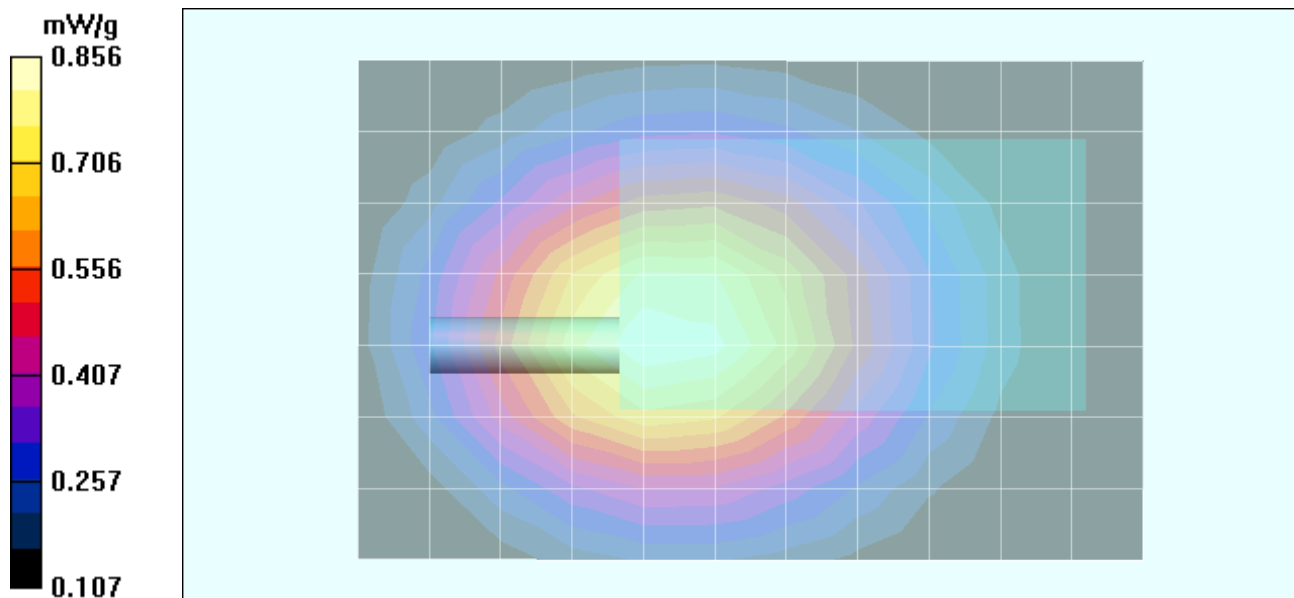
Face-Held - 2.5 cm Separation Distance/Zoom Scan (5x5x7)/Cube 0:

Measurement grid: dx=7.5mm, dy=7.5mm, dz=5mm

Reference Value = 31.4 V/m; Power Drift = -0.744 dB

Peak SAR (extrapolated) = 1.29 W/kg

SAR(1 g) = 0.820 mW/g; SAR(10 g) = 0.572 mW/g



Date Tested: 01/13/05

Face-Held SAR - Alkaline AAA Batteries (Energizer E92)

DUT: Cobra Model: PR250 WX; Type: Portable UHF FRS/GMRS PTT Radio Transceiver; Serial: 412000025

Ambient Temp: 23.5 °C; Fluid Temp: 22.2 °C; Barometric Pressure: 103.4 kPa; Humidity: 30%

Communication System: FM UHF

RF Output Power: 0.439 Watts (ERP)

Frequency: 462.7125 MHz; Duty Cycle: 1:1

1.5V 1250mAh Energizer E92 AAA Alkaline Batteries (x4)

Medium: HSL450 ($\sigma = 0.85$ mho/m; $\epsilon_r = 42.8$; $\rho = 1000$ kg/m³)

- Probe: ET3DV6 - SN1387; ConvF(7.5, 7.5, 7.5); Calibrated: 18/03/2004
- Sensor-Surface: 4mm (Mechanical Surface Detection)
- Electronics: DAE3 Sn353; Calibrated: 06/07/2004
- Phantom: Planar; Type: Plexiglas; Serial: 161
- Measurement SW: DASY4, V4.3 Build 22; Postprocessing SW: SEMCAD, V1.8 Build 127

Face-Held - 2.5 cm Separation Distance/Area Scan (8x12x1):

Measurement grid: dx=15mm, dy=15mm

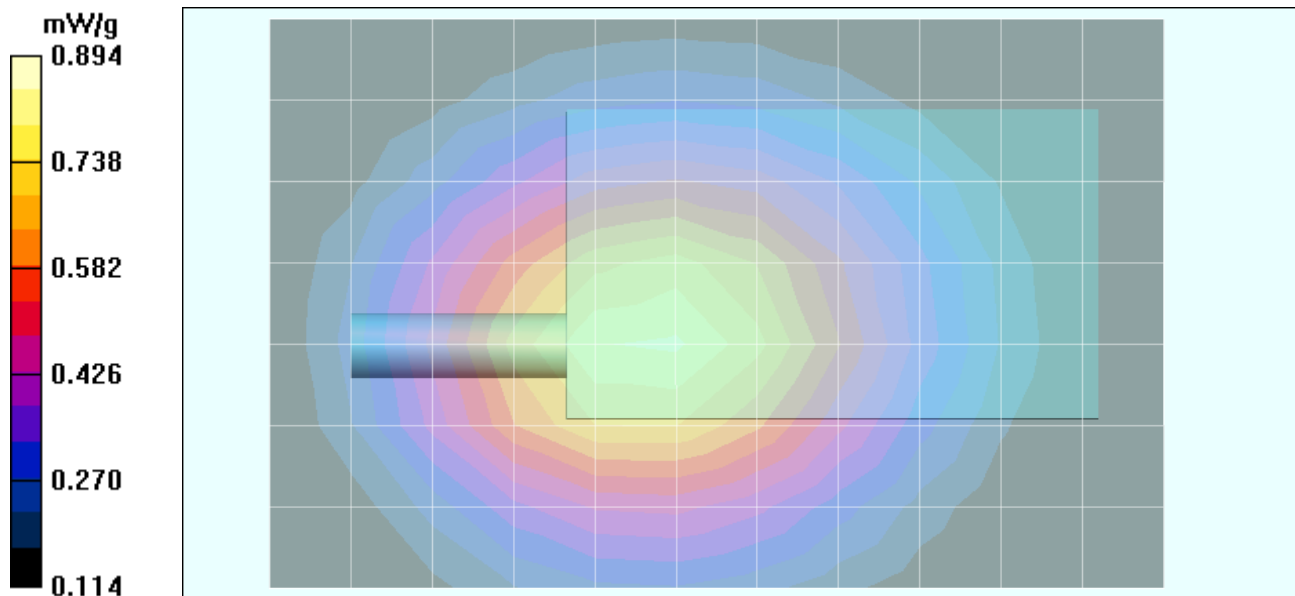
Face-Held - 2.5 cm Separation Distance/Zoom Scan (5x5x7)/Cube 0:

Measurement grid: dx=7.5mm, dy=7.5mm, dz=5mm

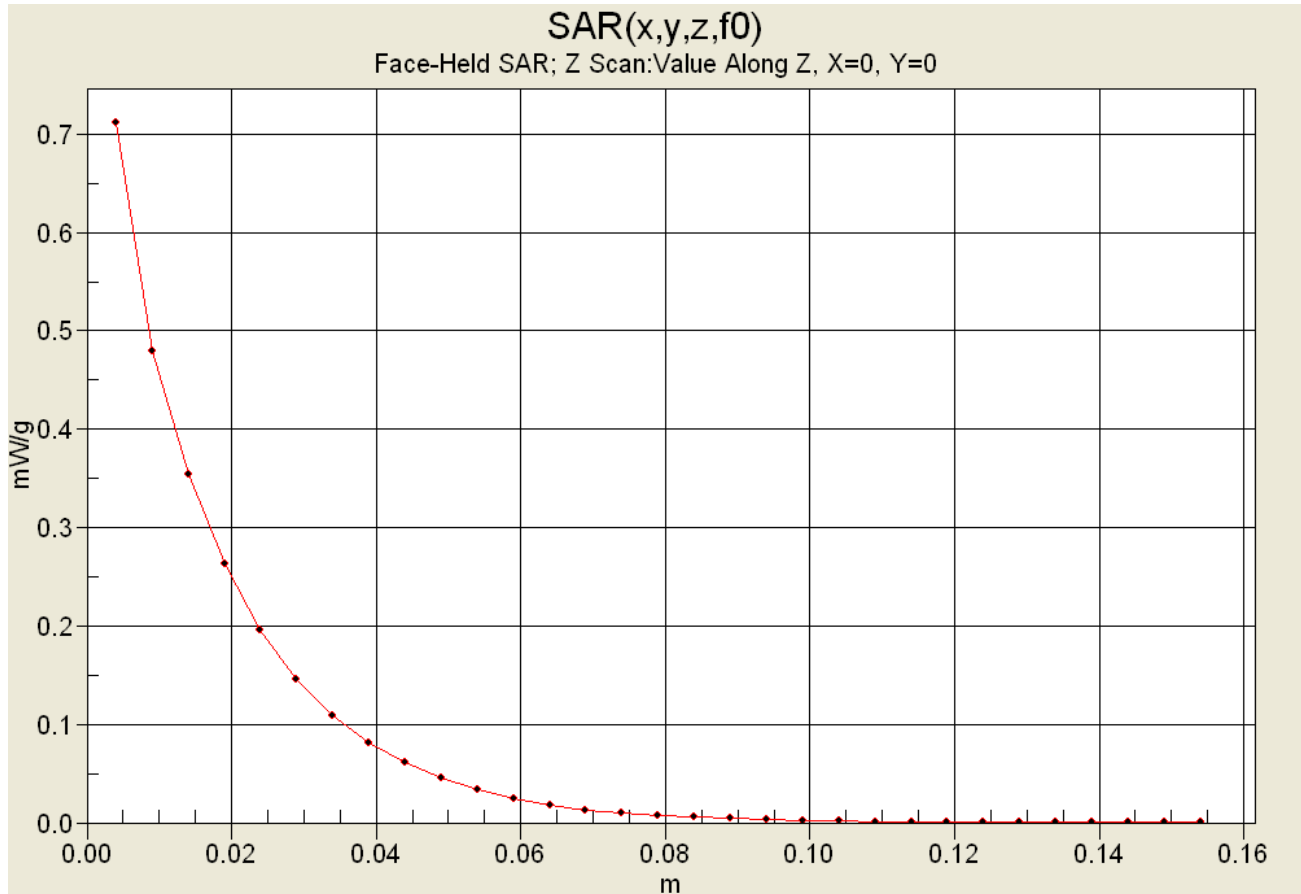
Reference Value = 31.4 V/m; Power Drift = -0.909 dB

Peak SAR (extrapolated) = 1.35 W/kg

SAR(1 g) = 0.856 mW/g; SAR(10 g) = 0.599 mW/g



Z-Axis Scan

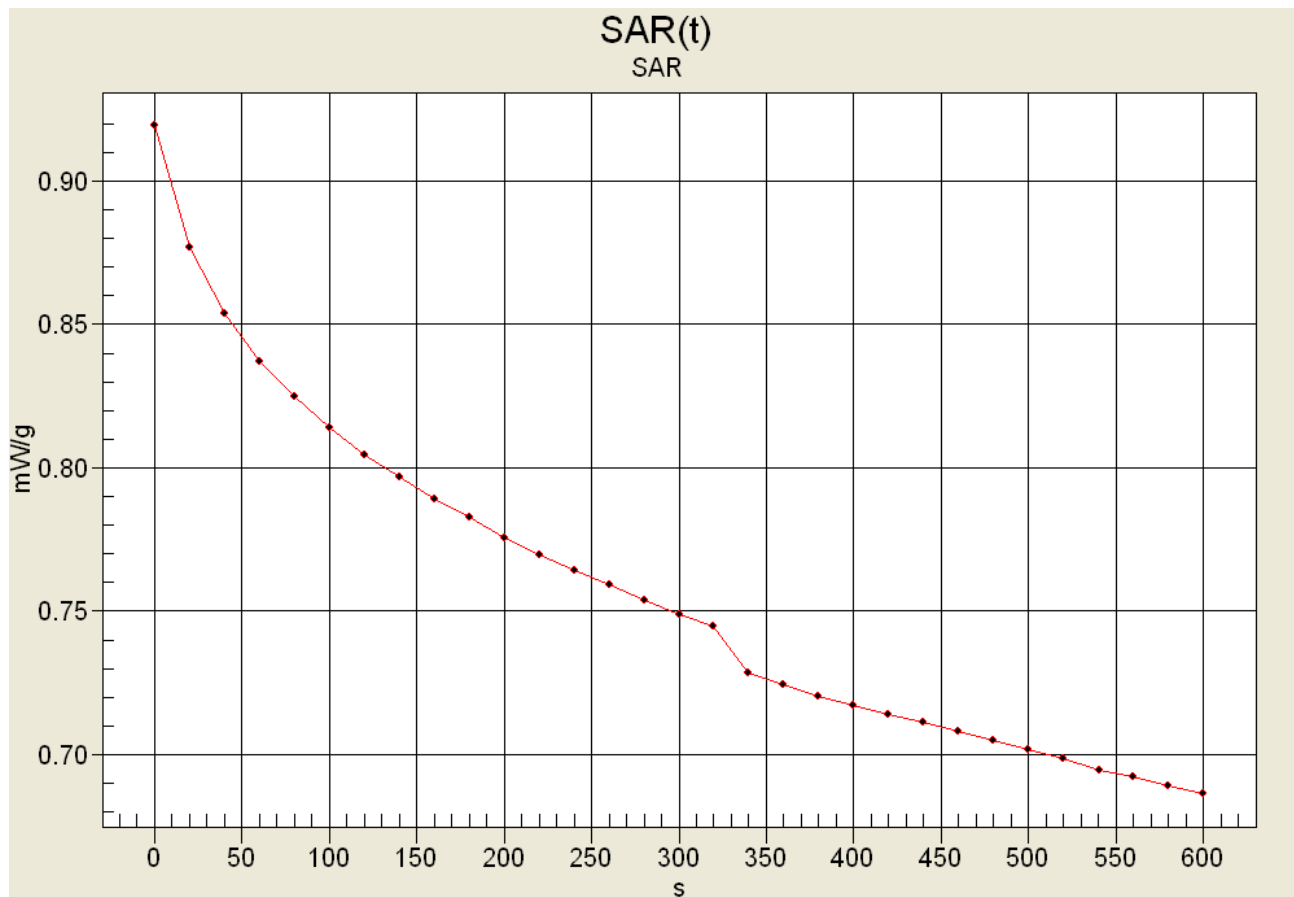


SAR-versus-Time Power Drift Evaluation

Face-Held Configuration

Alkaline AAA Batteries (Energizer E92)

Mid Channel - 462.7125 MHz



High SAR: 0.919374 mW/g

Low SAR: 0.686479 mW/g (-1.27 dB)

SAR after 340s: 0.728488 mW/g (-1.01 dB)

(340s = Zoom Scan Duration)

(600s = Area Scan Duration)

Date Tested: 01/13/05

Body-Worn SAR - NiCd AAA Batteries

DUT: Cobra Model: PR250 WX; Type: Portable UHF FRS/GMRS PTT Radio Transceiver; Serial: 412000025

Body-Worn Accessories: Plastic Belt-Clip, Generic Earbud with Lapel-Microphone

Ambient Temp: 23.5 °C; Fluid Temp: 22.1 °C; Barometric Pressure: 103.4 kPa; Humidity: 30%

Communication System: FM UHF
RF Output Power: 0.439 Watts (ERP)
Frequency: 462.7125 MHz; Duty Cycle: 1:1
1.2V 300mAh NiCd AAA Batteries (x4)
Medium: M450 ($\sigma = 0.91$ mho/m; $\epsilon_r = 56.8$; $\rho = 1000$ kg/m³)

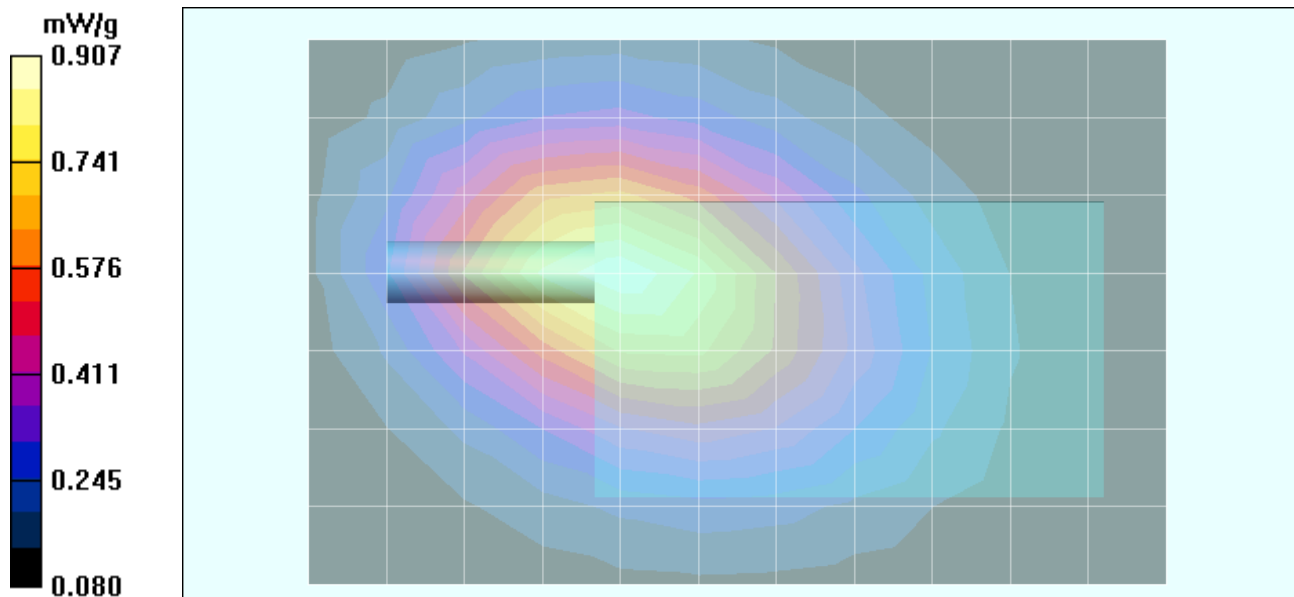
- Probe: ET3DV6 - SN1387; ConvF(7.6, 7.6, 7.6); Calibrated: 18/03/2004
- Sensor-Surface: 4mm (Mechanical Surface Detection)
- Electronics: DAE3 Sn353; Calibrated: 19/12/2003
- Phantom: Planar; Type: Plexiglas; Serial: 161
- Measurement SW: DASY4, V4.3 Build 22; Postprocessing SW: SEMCAD, V1.8 Build 127

Body-Worn - 0.5 cm Belt-Clip Separation Distance/Area Scan (8x12x1):

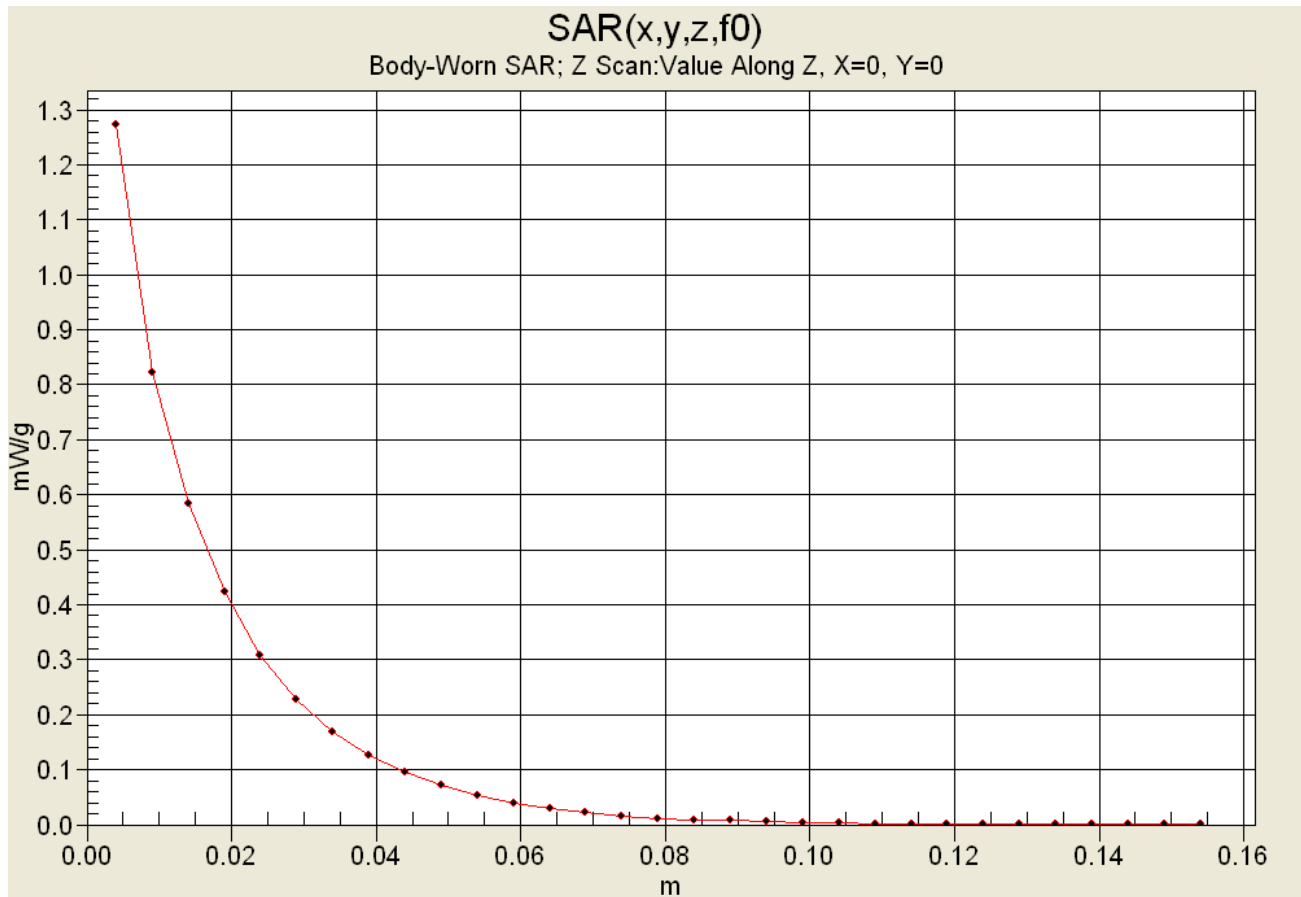
Measurement grid: dx=15mm, dy=15mm

Body-Worn - 0.5 cm Belt-Clip Separation Distance/Zoom Scan (5x5x7)/Cube 0:

Measurement grid: dx=7.5mm, dy=7.5mm, dz=5mm
Reference Value = 27.2 V/m; Power Drift = -0.488 dB
Peak SAR (extrapolated) = 1.44 W/kg
SAR(1 g) = 0.865 mW/g; SAR(10 g) = 0.573 mW/g



Z-Axis Scan



Date Tested: 01/13/05

Body-Worn SAR - Alkaline AAA Batteries (Duracell Procell)

DUT: Cobra Model: PR250 WX; Type: Portable UHF FRS/GMRS PTT Radio Transceiver; Serial: 412000025

Body-Worn Accessories: Plastic Belt-Clip, Generic Earbud with Lapel-Microphone

Ambient Temp: 23.5 °C; Fluid Temp: 22.1 °C; Barometric Pressure: 103.4 kPa; Humidity: 30%

Communication System: FM UHF

RF Output Power: 0.439 Watts (ERP)

Frequency: 462.7125 MHz; Duty Cycle: 1:1

1.5V 1150mAh Duracell ProCell AAA Alkaline Batteries (x4)

Medium: M450 ($\sigma = 0.91$ mho/m; $\epsilon_r = 56.8$; $\rho = 1000$ kg/m³)

- Probe: ET3DV6 - SN1387; ConvF(7.6, 7.6, 7.6); Calibrated: 18/03/2004
- Sensor-Surface: 4mm (Mechanical Surface Detection)
- Electronics: DAE3 Sn353; Calibrated: 19/12/2003
- Phantom: Planar; Type: Plexiglas; Serial: 161
- Measurement SW: DASY4, V4.3 Build 22; Postprocessing SW: SEMCAD, V1.8 Build 127

Body-Worn - 0.5 cm Belt-Clip Separation Distance/Area Scan (8x12x1):

Measurement grid: dx=15mm, dy=15mm

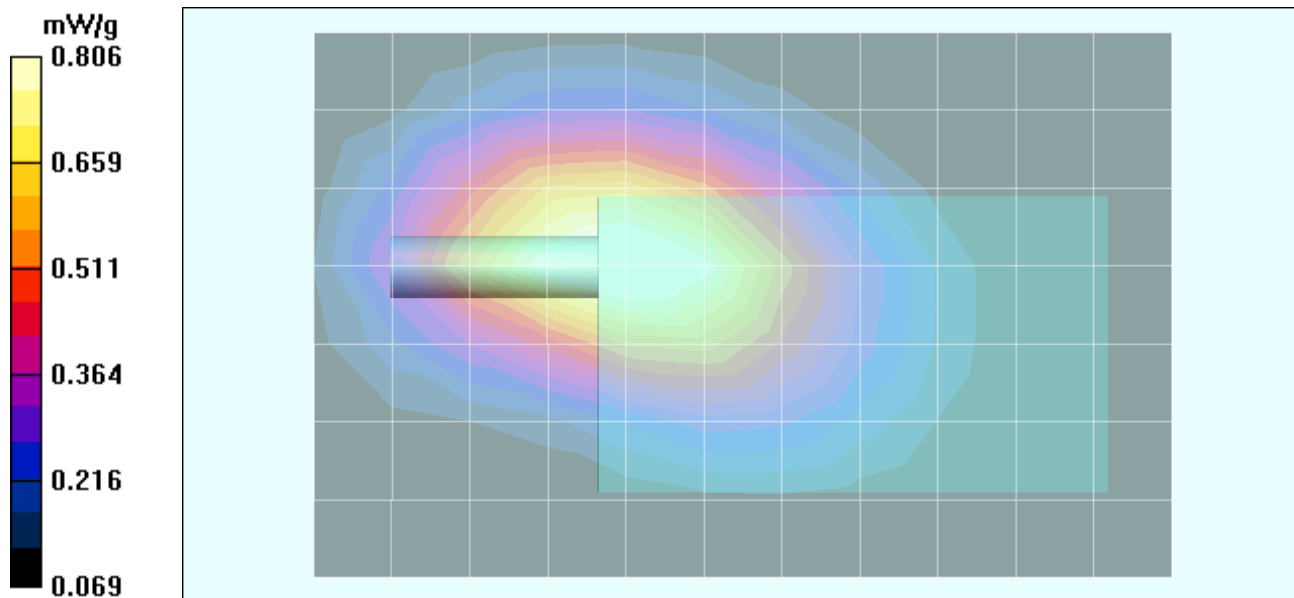
Body-Worn - 0.5 cm Belt-Clip Separation Distance/Zoom Scan (5x5x7)/Cube 0:

Measurement grid: dx=7.5mm, dy=7.5mm, dz=5mm

Reference Value = 24.5 V/m; Power Drift = -0.709 dB


Peak SAR (extrapolated) = 1.3 W/kg

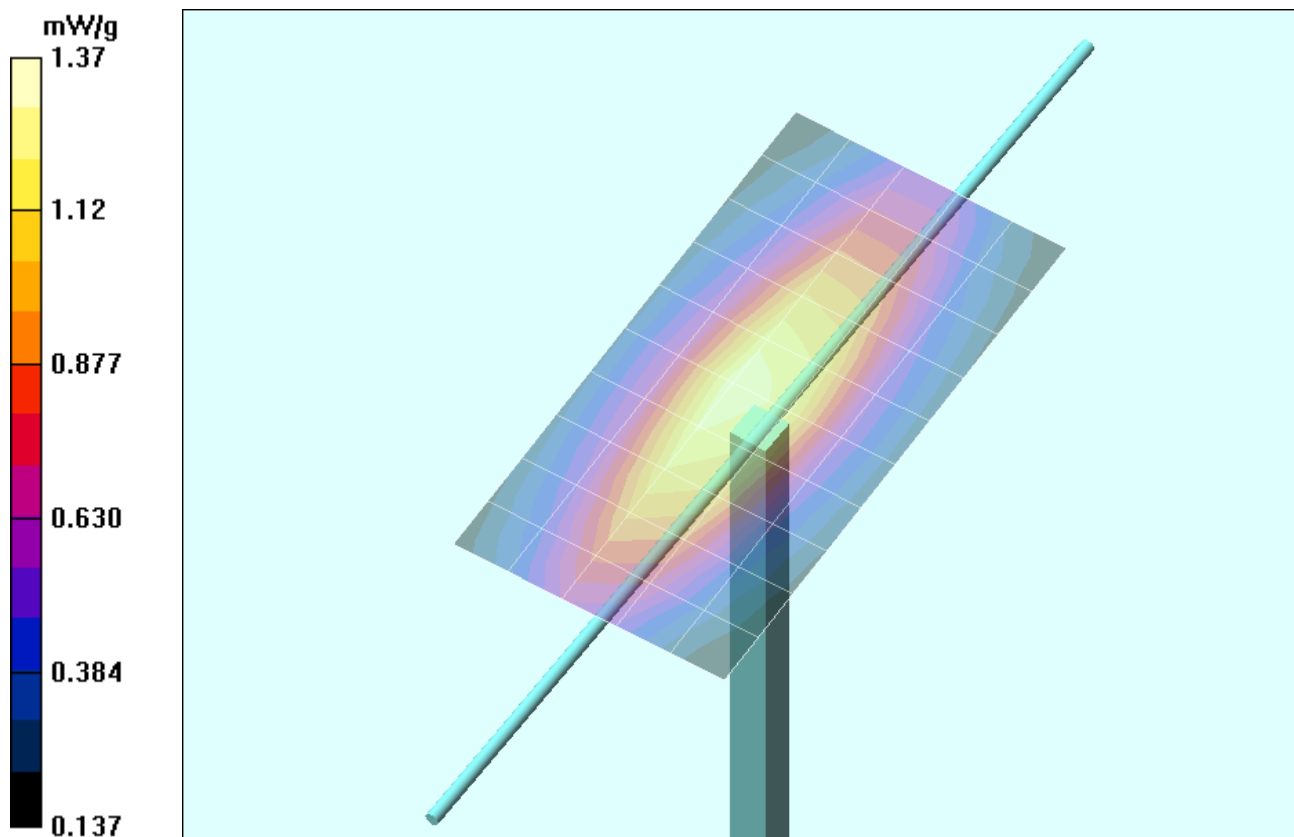
SAR(1 g) = 0.760 mW/g; SAR(10 g) = 0.491 mW/g

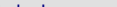


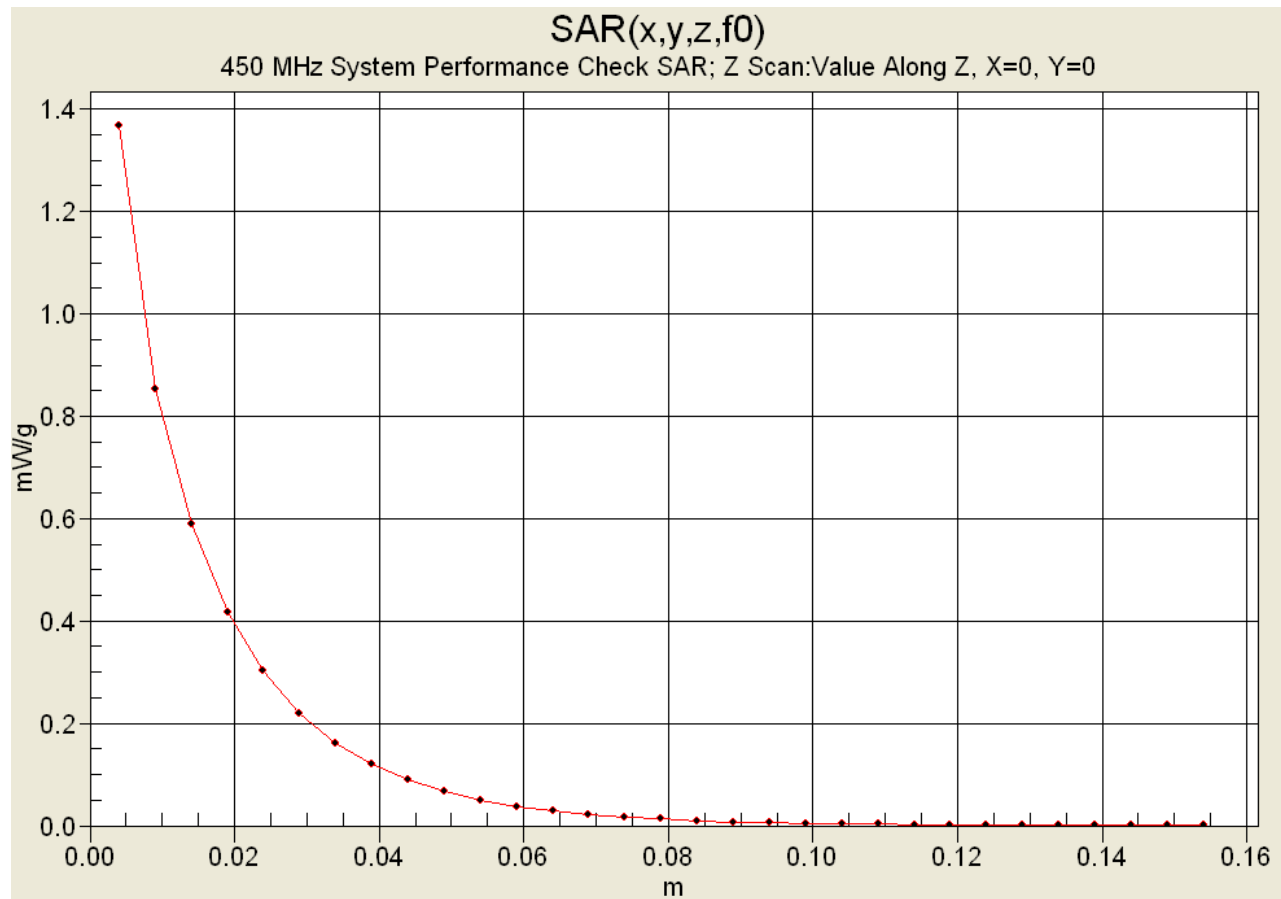
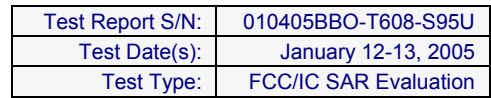
Test Report S/N:	010405BBO-T608-S95U
Test Date(s):	January 12-13, 2005
Test Type:	FCC/IC SAR Evaluation

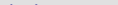
APPENDIX B - SYSTEM PERFORMANCE CHECK DATA

Applicant:	Cobra Electronics Corporation	FCC ID:	BBOPR250	IC ID:	906B-PR250
Model(s):	PR250WX / PR590WX	Portable UHF FRS/GMRS PTT Radio Transceiver	462.5500 - 467.7125 MHz		
2005 Celltech Labs Inc.		This document is not to be reproduced in whole or in part without the written permission of Celltech Labs Inc.			16 of 20



Applicant:	Cobra Electronics Corporation	FCC ID:	BBOPR250	IC ID:	906B-PR250
Model(s):	PR250WX / PR590WX	Portable UHF FRS/GMRS PTT Radio Transceiver	462.5500 - 467.7125 MHz		
2005 Celltech Labs Inc.		This document is not to be reproduced in whole or in part without the written permission of Celltech Labs Inc.			



Applicant:	Cobra Electronics Corporation	FCC ID:	BBOPR250	IC ID:	906B-PR250
Model(s):	PR250WX / PR590WX	Portable UHF FRS/GMRS PTT Radio Transceiver	462.5500 - 467.7125 MHz		
2005 Celltech Labs Inc.		This document is not to be reproduced in whole or in part without the written permission of Celltech Labs Inc.			

APPENDIX C - SYSTEM VALIDATION

450 MHz SYSTEM VALIDATION DIPOLE

Type:

450 MHz Validation Dipole

Serial Number:

136

Place of Calibration:

Celltech Labs Inc.

Date of Calibration:

November 4, 2004

Celltech Labs Inc. hereby certifies that this device has been calibrated on the date indicated above.

Calibrated by:

Spencer Watson

Approved by:

Russell W. Pope

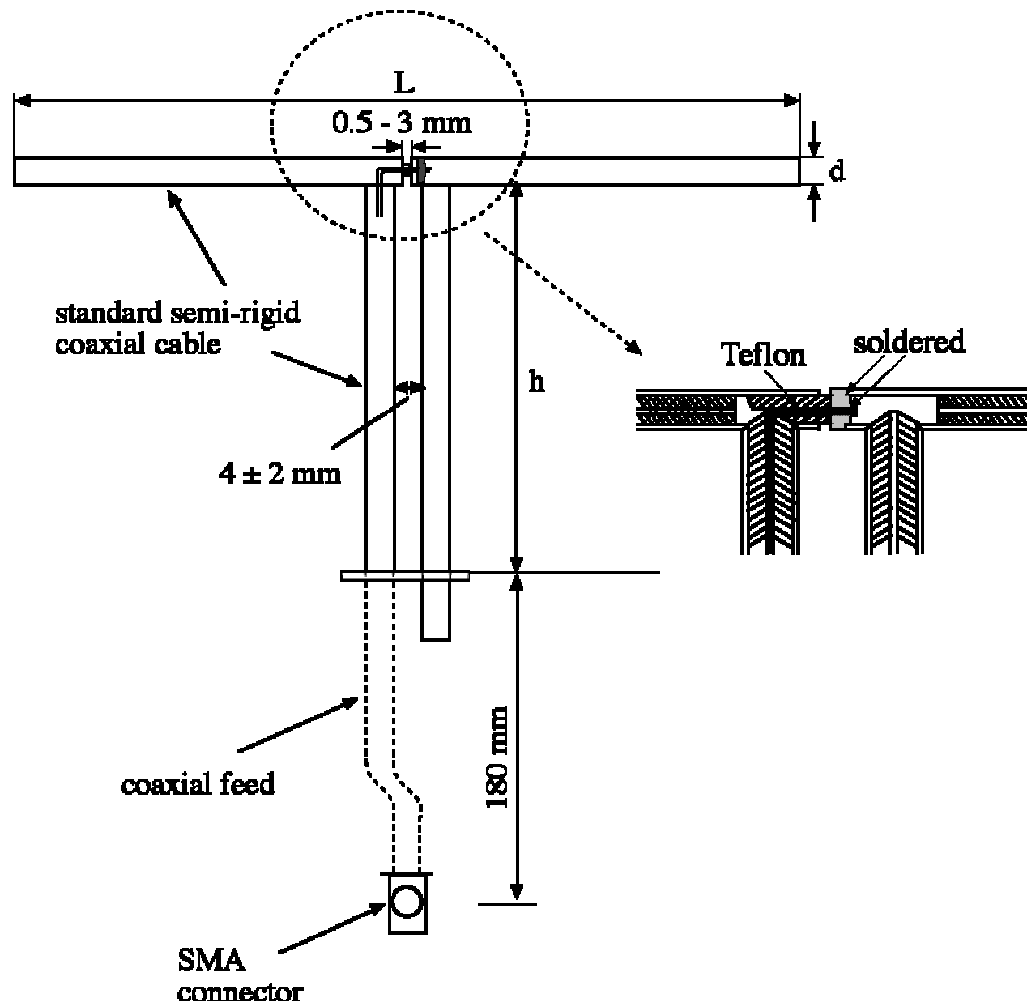
1. Dipole Construction & Electrical Characteristics

The validation dipole was constructed in accordance with the IEEE Std “Recommended Practice for Determining the Spatial-Peak Specific Absorption Rate (SAR) in the Human Body Due to Wireless Communications Devices: Experimental Techniques”. The electrical properties were measured using an HP 8753E Network Analyzer. The network analyzer was calibrated to the validation dipole N-type connector feed point using an HP85032E Type N calibration kit. The dipole was placed parallel to a planar phantom at a separation distance of 15.0mm from the simulating fluid using a loss-less dielectric spacer. The measured input impedance is:

Feed point impedance at 450MHz $\text{Re}\{Z\} = 54.041\Omega$

$\text{Im}\{Z\} = 5.5258\Omega$

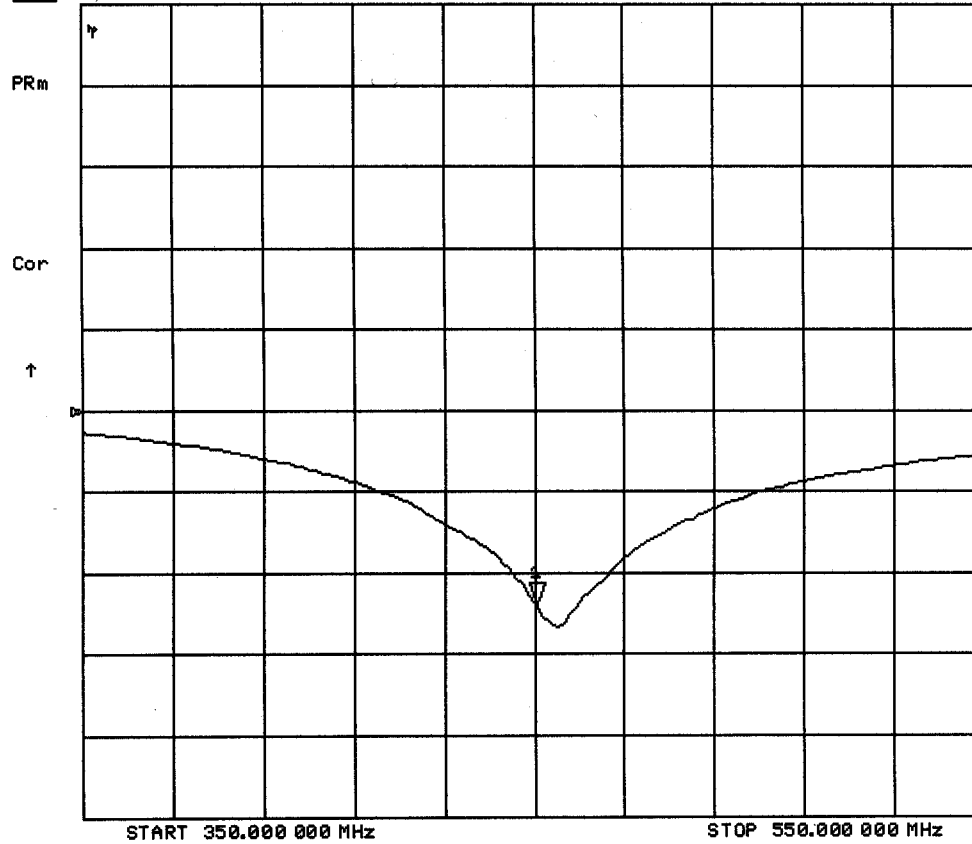
Return Loss at 450MHz -23.744dB



4 Nov 2004 09:03:54

CH1 MEM LOG 10 dB/REF 0 dB

1:-23.744 dB 450.000 000 MHz

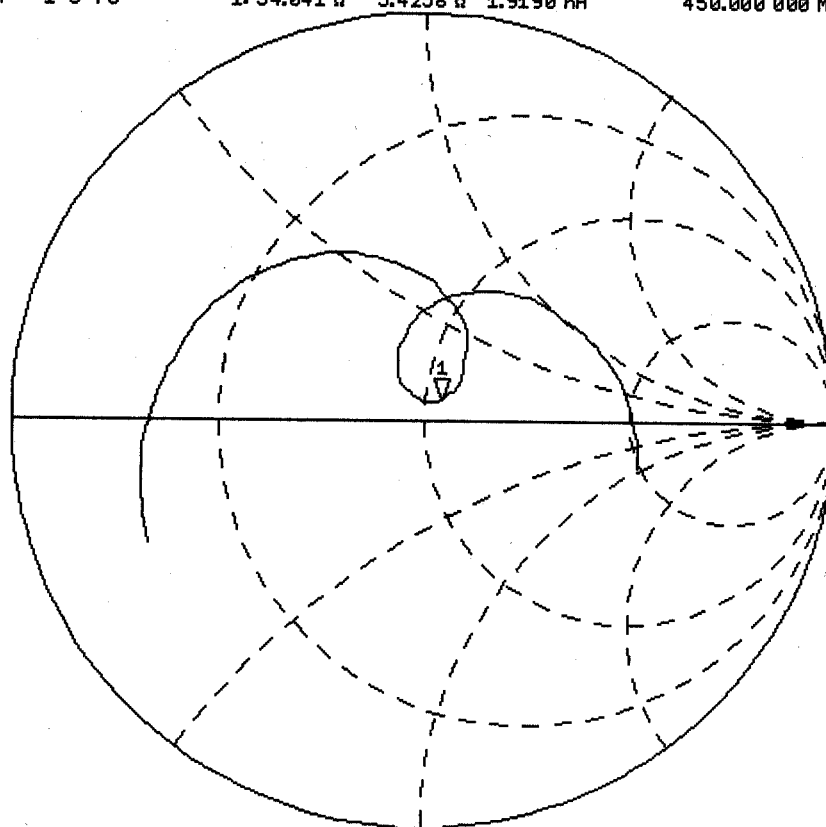


4 Nov 2004 09:05:08
CH1 MEM 1 U FS 1: 54.041 Ω 5.4258 Ω 1.9190 nH 450.000 000 MHz

PRn

Cor

↑



START 350.000 000 MHz

STOP 550.000 000 MHz

2. Validation Dipole Dimensions

Frequency (MHz)	L (mm)	h (mm)	d (mm)
300	420.0	250.0	6.2
450	288.0	167.0	6.2
835	161.0	89.8	3.6
900	149.0	83.3	3.6
1450	89.1	51.7	3.6
1800	72.0	41.7	3.6
1900	68.0	39.5	3.6
2000	64.5	37.5	3.6
2450	51.8	30.6	3.6
3000	41.5	25.0	3.6

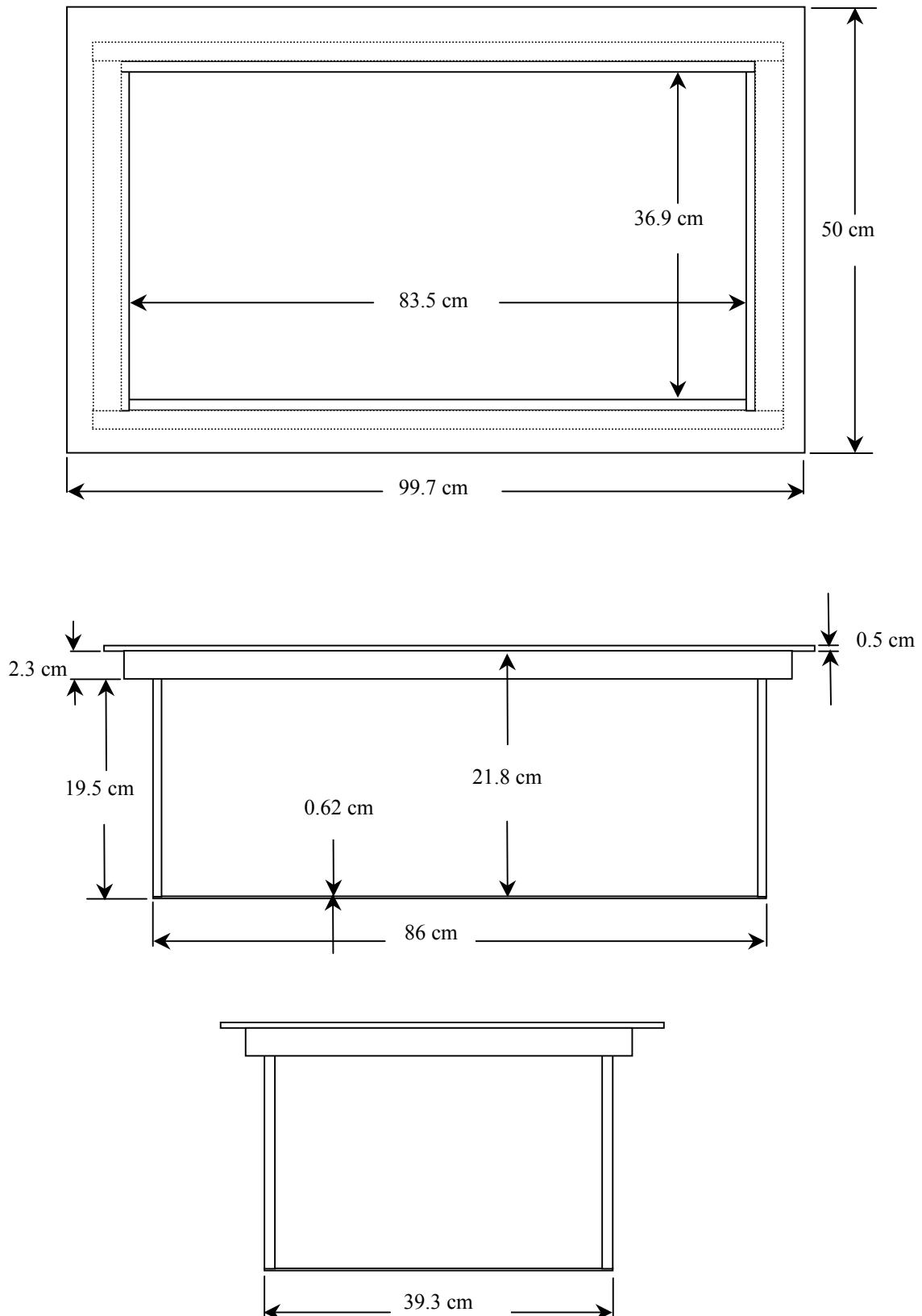
3. Validation Phantom

The validation phantom was constructed using relatively low-loss tangent Plexiglas material. The inner dimensions of the phantom are as follows:

Length: 83.5 cm
Width: 36.9 cm
Height: 21.8 cm

The bottom section of the validation phantom is constructed of 6.2 ± 0.1 mm Plexiglas.

4. Dimensions of Plexiglas Planar Phantom



5. 450 MHz System Validation Setup



450 MHz Validation Dipole Setup



6. Measurement Conditions

The planar phantom was filled with brain simulating tissue having the following parameters at 450 MHz:

Relative Permittivity: 42.9
 Conductivity: 0.85 mho/m
 Fluid Temperature: 21.9 °C
 Fluid Depth: ≥ 15.0 cm

Environmental Conditions:

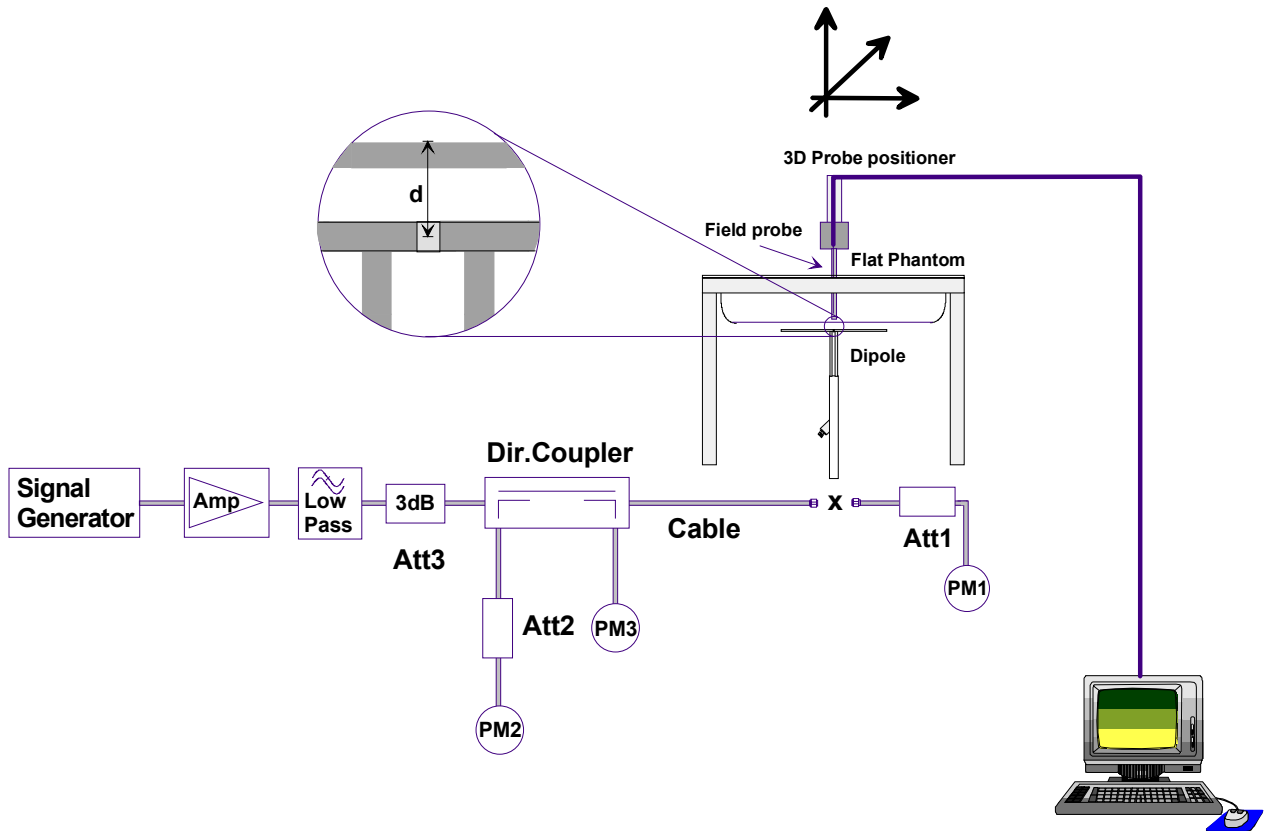
Ambient Temperature: 22.4 °C
 Humidity: 31 %
 Barometric Pressure: 103.2 kPa

The 450 MHz simulated brain tissue mixture consists of the following ingredients:

Ingredient	Percentage by weight
Water	38.56%
Sugar	56.32%
Salt	3.95%
HEC	0.98%
Dowicil 75	0.19%
450 MHz Target Dielectric Parameters at 22 °C	$\epsilon_r = 43.5$ $\sigma = 0.87$ S/m

7. SAR Measurement

The SAR measurement was performed with the E-field probe in mechanical detection mode only. The setup and determination of the forward power into the dipole was performed using the following procedures.



First the power meter PM1 (including attenuator Att1) is connected to the cable to measure the forward power at the location of the dipole connector (X). The signal generator is adjusted for the desired forward power at the dipole connector (taking into account the attenuation of Att1) as read by power meter PM2. After connecting the cable to the dipole, the signal generator is readjusted for the same reading at power meter PM2. If the signal generator does not allow adjustment in 0.01dB steps, the remaining difference at PM2 must be taken into consideration. PM3 records the reflected power from the dipole to ensure that the value is not changed from the previous value. The reflected power should be 20dB below the forward power.

8. Validation Dipole SAR Test Results

Ten SAR measurements were performed in order to achieve repeatability and to establish an average target value.

Validation Measurement	SAR @ 0.25W Input averaged over 1g	SAR @ 1W Input averaged over 1g	SAR @ 0.25W Input averaged over 10g	SAR @ 1W Input averaged over 10g	Peak SAR @ 0.25W Input
Test 1	1.22	4.88	0.782	3.128	1.29
Test 2	1.23	4.92	0.791	3.164	1.30
Test 3	1.23	4.92	0.789	3.156	1.30
Test 4	1.23	4.92	0.790	3.160	1.31
Test 5	1.24	4.96	0.793	3.172	1.31
Test 6	1.24	4.96	0.792	3.168	1.31
Test 7	1.23	4.92	0.791	3.164	1.31
Test 8	1.23	4.92	0.789	3.156	1.30
Test 9	1.24	4.96	0.791	3.164	1.31
Test 10	1.23	4.92	0.789	3.156	1.31
Average Value	1.23	4.93	0.790	3.16	1.31

The results have been normalized to 1W (forward power) into the dipole.

IEEE Target over 1cm^3 (1g) of tissue: 4.9 mW/g (+/- 10%)

Averaged over 1cm (1g) of tissue: 4.93 mW/g (deviation +0.6%)

IEEE Target over 10cm^3 (10g) of tissue: 3.3 mW/g (+/- 10%)

Averaged over 10cm (10g) of tissue: 3.16 mW/g (deviation -4.2%)

450 MHz System Validation - November 4, 2004

DUT: Dipole 450 MHz; Model: D450V2; Serial: 136; Calibrated: 11/04/2004

Ambient Temp: 22.4 °C; Fluid Temp: 21.9 °C; Barometric Pressure: 103.2 kPa; Humidity: 31%

Communication System: CW

Frequency: 450 MHz; Duty Cycle: 1:1

Medium: HSL450 ($\sigma = 0.85$ mho/m; $\epsilon_r = 42.9$; $\rho = 1000$ kg/m³)

- Probe: ET3DV6 - SN1387; ConvF(7.5, 7.5, 7.5); Calibrated: 18/03/2004

- Sensor-Surface: 4mm (Mechanical Surface Detection)

- Electronics: DAE3 Sn370; Calibrated: 14/05/2004

- Phantom: Validation Planar; Type: Plexiglas; Serial: 137

- Measurement SW: DASY4, V4.3 Build 22; Postprocessing SW: SEMCAD, V1.8 Build 127

450 MHz System Validation/Area Scan (6x11x1): Measurement grid: dx=15mm, dy=15mm

450 MHz System Validation/Zoom Scan (7x7x7)/Cube 0: Measurement grid: dx=5mm, dy=5mm, dz=5mm

Reference Value = 39.3 V/m; Power Drift = -0.1 dB

Peak SAR (extrapolated) = 2.15 W/kg

SAR(1 g) = 1.22 mW/g; SAR(10 g) = 0.782 mW/g

450 MHz System Validation/Zoom Scan 2 (7x7x7)/Cube 0: Measurement grid: dx=5mm, dy=5mm, dz=5mm

Reference Value = 39.2 V/m; Power Drift = -0.0 dB

Peak SAR (extrapolated) = 2.16 W/kg

SAR(1 g) = 1.23 mW/g; SAR(10 g) = 0.791 mW/g

450 MHz System Validation/Zoom Scan 3 (7x7x7)/Cube 0: Measurement grid: dx=5mm, dy=5mm, dz=5mm

Reference Value = 39.1 V/m; Power Drift = -0.004 dB

Peak SAR (extrapolated) = 2.16 W/kg

SAR(1 g) = 1.23 mW/g; SAR(10 g) = 0.789 mW/g

450 MHz System Validation/Zoom Scan 4 (7x7x7)/Cube 0: Measurement grid: dx=5mm, dy=5mm, dz=5mm

Reference Value = 39.2 V/m; Power Drift = -0.0 dB

Peak SAR (extrapolated) = 2.18 W/kg

SAR(1 g) = 1.23 mW/g; SAR(10 g) = 0.790 mW/g

450 MHz System Validation/Zoom Scan 5 (7x7x7)/Cube 0: Measurement grid: dx=5mm, dy=5mm, dz=5mm

Reference Value = 39.2 V/m; Power Drift = 0.009 dB

Peak SAR (extrapolated) = 2.18 W/kg

SAR(1 g) = 1.24 mW/g; SAR(10 g) = 0.793 mW/g

450 MHz System Validation/Zoom Scan 6 (7x7x7)/Cube 0: Measurement grid: dx=5mm, dy=5mm, dz=5mm

Reference Value = 39.1 V/m; Power Drift = 0.007 dB

Peak SAR (extrapolated) = 2.18 W/kg

SAR(1 g) = 1.24 mW/g; SAR(10 g) = 0.792 mW/g

450 MHz System Validation/Zoom Scan 7 (7x7x7)/Cube 0: Measurement grid: dx=5mm, dy=5mm, dz=5mm

Reference Value = 39.2 V/m; Power Drift = 0.004 dB

Peak SAR (extrapolated) = 2.18 W/kg

SAR(1 g) = 1.23 mW/g; SAR(10 g) = 0.791 mW/g

450 MHz System Validation/Zoom Scan 8 (7x7x7)/Cube 0: Measurement grid: dx=5mm, dy=5mm, dz=5mm

Reference Value = 39.2 V/m; Power Drift = 0.0 dB

Peak SAR (extrapolated) = 2.16 W/kg

SAR(1 g) = 1.23 mW/g; SAR(10 g) = 0.789 mW/g

450 MHz System Validation/Zoom Scan 9 (7x7x7)/Cube 0: Measurement grid: dx=5mm, dy=5mm, dz=5mm

Reference Value = 39.4 V/m; Power Drift = 0.0 dB

Peak SAR (extrapolated) = 2.19 W/kg

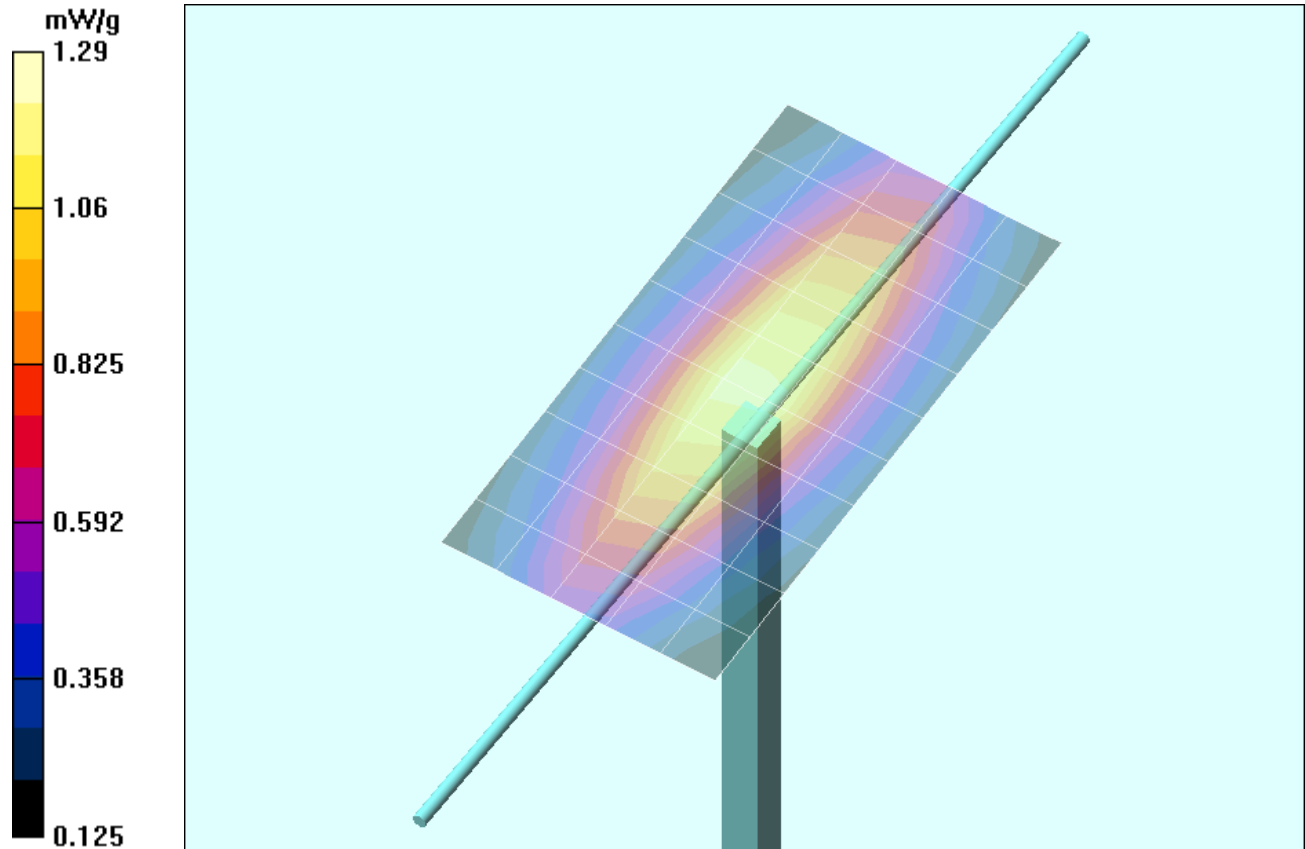
SAR(1 g) = 1.24 mW/g; SAR(10 g) = 0.791 mW/g

450 MHz System Validation/Zoom Scan 10 (7x7x7)/Cube 0: Measurement grid: dx=5mm, dy=5mm, dz=5mm

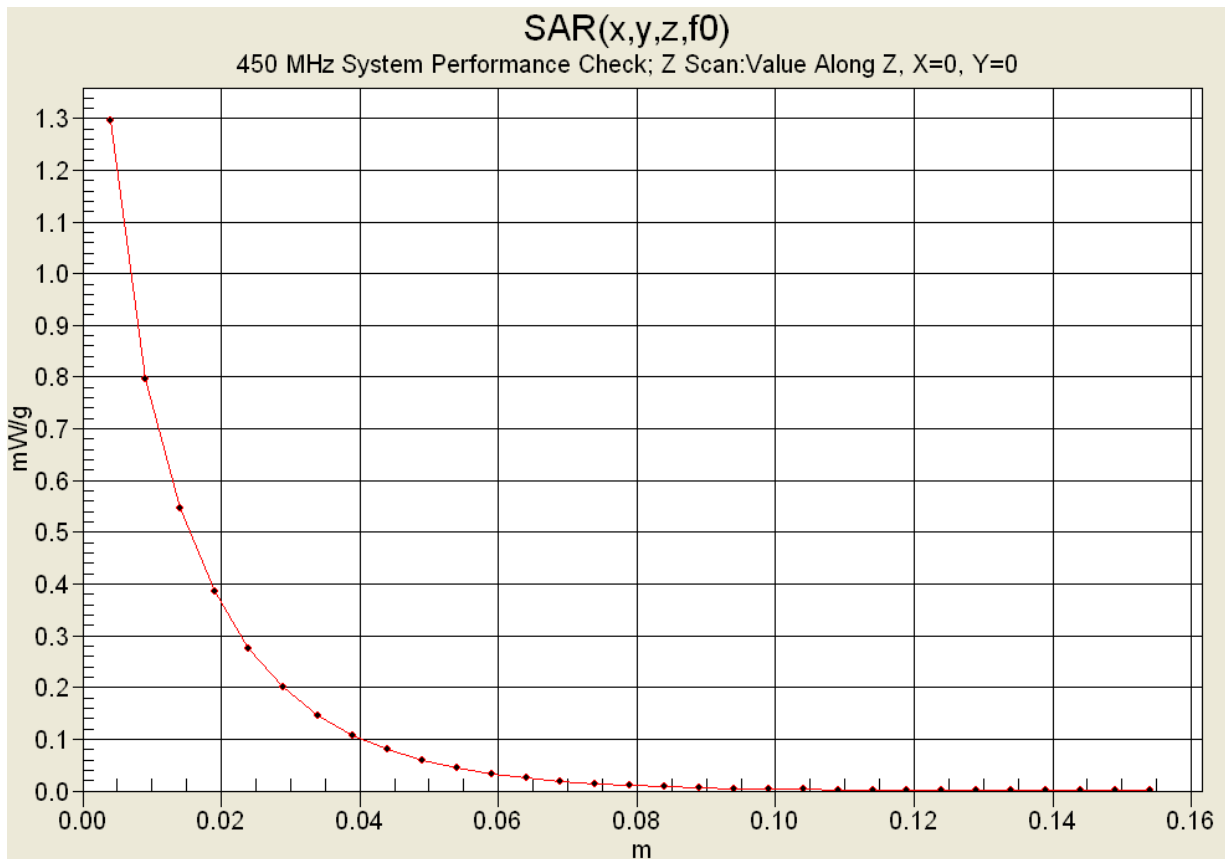
Reference Value = 39.1 V/m; Power Drift = 0.007 dB

Peak SAR (extrapolated) = 2.16 W/kg

SAR(1 g) = 1.23 mW/g; SAR(10 g) = 0.789 mW/g



1 g average of 10 measurements: 1.23 mW/g
10 g average of 10 measurements: 0.790 mW/g



450MHz System Validation

Measured Fluid Dielectric Parameters (Brain)

November 04, 2004

Frequency	e'	e''
350.000000 MHz	45.3974	39.4988
360.000000 MHz	45.0834	38.7858
370.000000 MHz	44.8651	38.1777
380.000000 MHz	44.6622	37.6103
390.000000 MHz	44.3761	37.1472
400.000000 MHz	44.1745	36.5919
410.000000 MHz	43.8392	36.0417
420.000000 MHz	43.6277	35.5608
430.000000 MHz	43.3443	34.9958
440.000000 MHz	43.1200	34.5629
450.000000 MHz	42.8999	34.1583
460.000000 MHz	42.7154	33.7478
470.000000 MHz	42.4773	33.4083
480.000000 MHz	42.2998	33.0563
490.000000 MHz	42.0302	32.7340
500.000000 MHz	41.8641	32.3576
510.000000 MHz	41.6518	31.9703
520.000000 MHz	41.4863	31.6232
530.000000 MHz	41.2685	31.3144
540.000000 MHz	41.1027	30.8977
550.000000 MHz	40.9455	30.6347

APPENDIX D - PROBE CALIBRATION

Client **Celltech**

CALIBRATION CERTIFICATE

Object(s) **ET3DV6 - SN:1387**

Calibration procedure(s) **QA CAL-01.v2**
Calibration procedure for dosimetric E-field probes

Calibration date: **March 18, 2004**


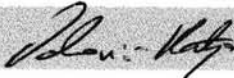
Condition of the calibrated item **In Tolerance (according to the specific calibration document)**

This calibration certificate documents the traceability to national standards, which realize the physical units of measurements (SI).
The measurements and the uncertainties with confidence probability are given on the following pages and are part of the certificate.

All calibrations have been conducted in the closed laboratory facility: environment temperature 22 +/- 2 degrees Celsius and humidity < 75%.

Calibration Equipment used (M&TE critical for calibration)

Model Type	ID #	Cal Date (Calibrated by, Certificate No.)	Scheduled Calibration
Power meter EPM E4419B	GB41293874	2-Apr-03 (METAS, No 252-0250)	Apr-04
Power sensor E4412A	MY41495277	2-Apr-03 (METAS, No 252-0250)	Apr-04
Reference 20 dB Attenuator	SN: 5086 (20b)	3-Apr-03 (METAS, No. 251-0340)	Apr-04
Fluke Process Calibrator Type 702	SN: 6295803	8-Sep-03 (Sintrel SCS No. E-030020)	Sep-04
Power sensor HP 8481A	MY41092180	18-Sep-02 (SPEAG, in house check Oct-03)	In house check: Oct 05
RF generator HP 8684C	US3642U01700	4-Aug-99 (SPEAG, in house check Aug-02)	In house check: Aug-05
Network Analyzer HP 8753E	US37390585	18-Oct-01 (SPEAG, in house check Oct-03)	In house check: Oct 05

	Name	Function	Signature
Calibrated by:	Nico Vetterli	Technician	
Approved by:	Katja Pokovic	Laboratory Director	

Date issued: March 18, 2004

This calibration certificate is issued as an intermediate solution until the accreditation process (based on ISO/IEC 17025 International Standard) for Calibration Laboratory of Schmid & Partner Engineering AG is completed.

Probe ET3DV6

SN:1387

Manufactured:	September 21, 1999
Last calibrated:	February 26, 2003
Recalibrated:	March 18, 2004

Calibrated for DASY Systems

(Note: non-compatible with DASY2 system!)

DASY - Parameters of Probe: ET3DV6 SN:1387

Sensitivity in Free Space

Diode Compression^A

NormX	$1.62 \mu\text{V}/(\text{V}/\text{m})^2$	DCP X	92	mV
NormY	$1.71 \mu\text{V}/(\text{V}/\text{m})^2$	DCP Y	92	mV
NormZ	$1.71 \mu\text{V}/(\text{V}/\text{m})^2$	DCP Z	92	mV

Sensitivity in Tissue Simulating Liquid (Conversion Factors)

Please see Page 7.

Boundary Effect

Head 900 MHz Typical SAR gradient: 5 % per mm

Sensor Cener to Phantom Surface Distance		3.7 mm	4.7 mm
SAR _{be} [%]	Without Correction Algorithm	9.3	4.4
SAR _{be} [%]	With Correction Algorithm	0.0	0.1

Head 1800 MHz Typical SAR gradient: 10 % per mm

Sensor to Surface Distance		3.7 mm	4.7 mm
SAR _{be} [%]	Without Correction Algorithm	14.8	10.0
SAR _{be} [%]	With Correction Algorithm	0.2	0.0

Sensor Offset

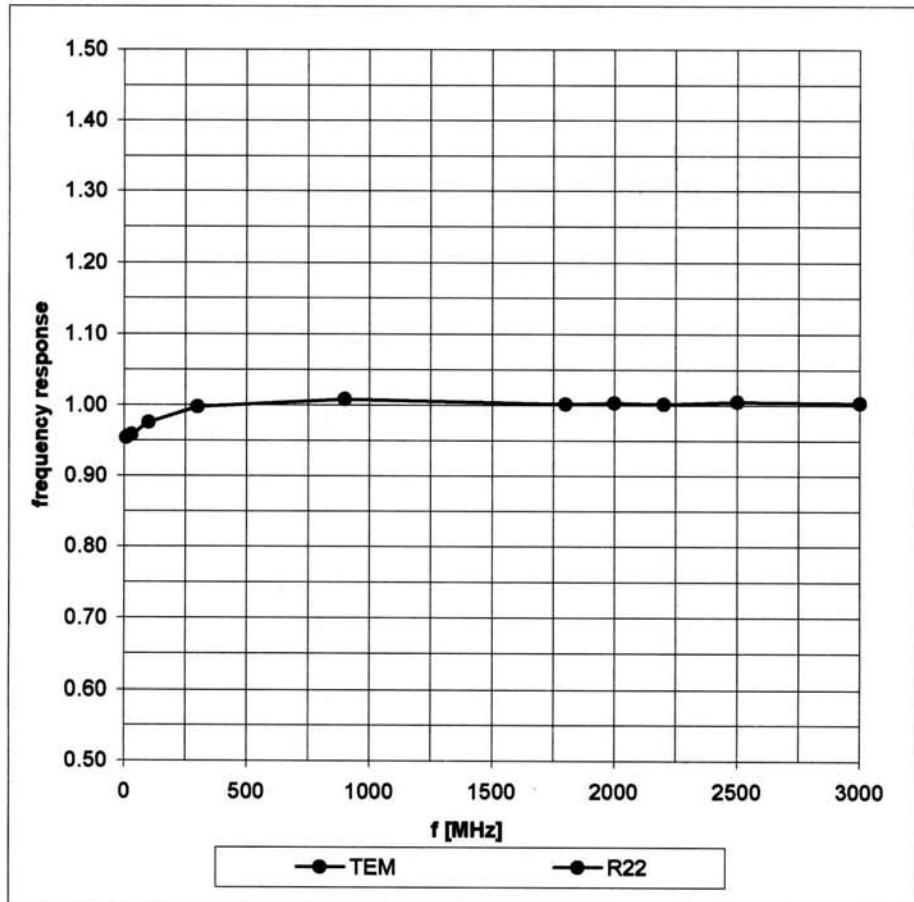
Probe Tip to Sensor Center	2.7 mm
Optical Surface Detection	in tolerance

The reported uncertainty of measurement is stated as the standard uncertainty of measurement multiplied by the coverage factor k=2, which for a normal distribution corresponds to a coverage probability of approximately 95%.

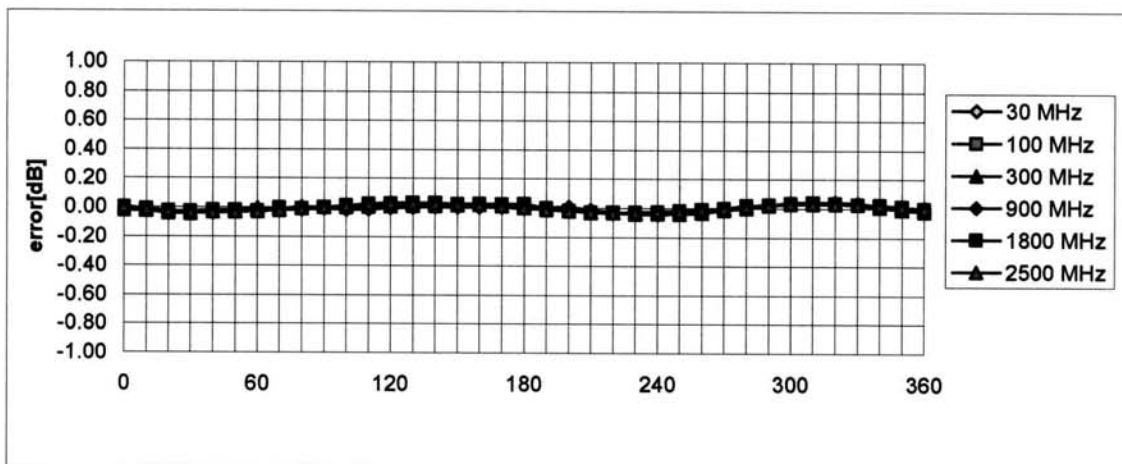
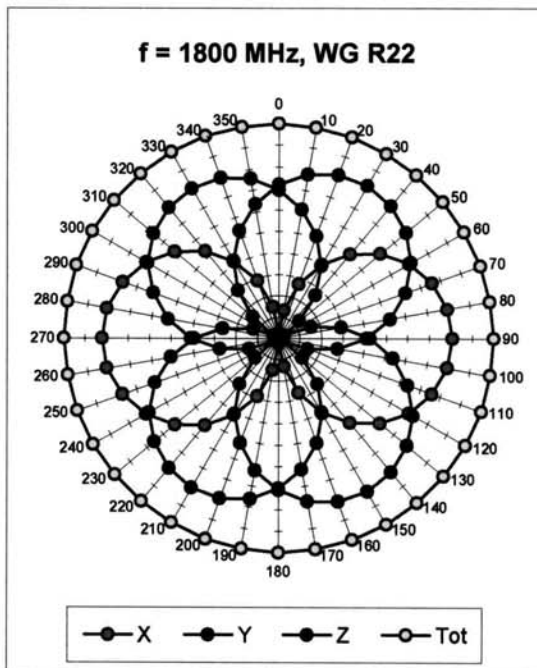
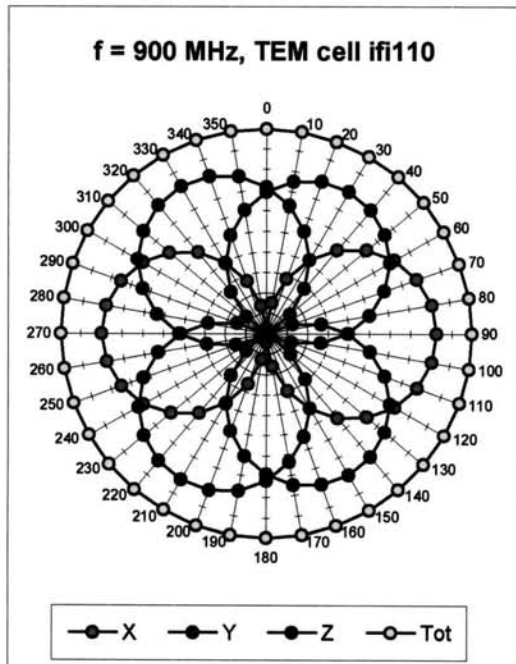
^A numerical linearization parameter: uncertainty not required

Frequency Response of E-Field

(TEM-Cell:ifi110, Waveguide R22)

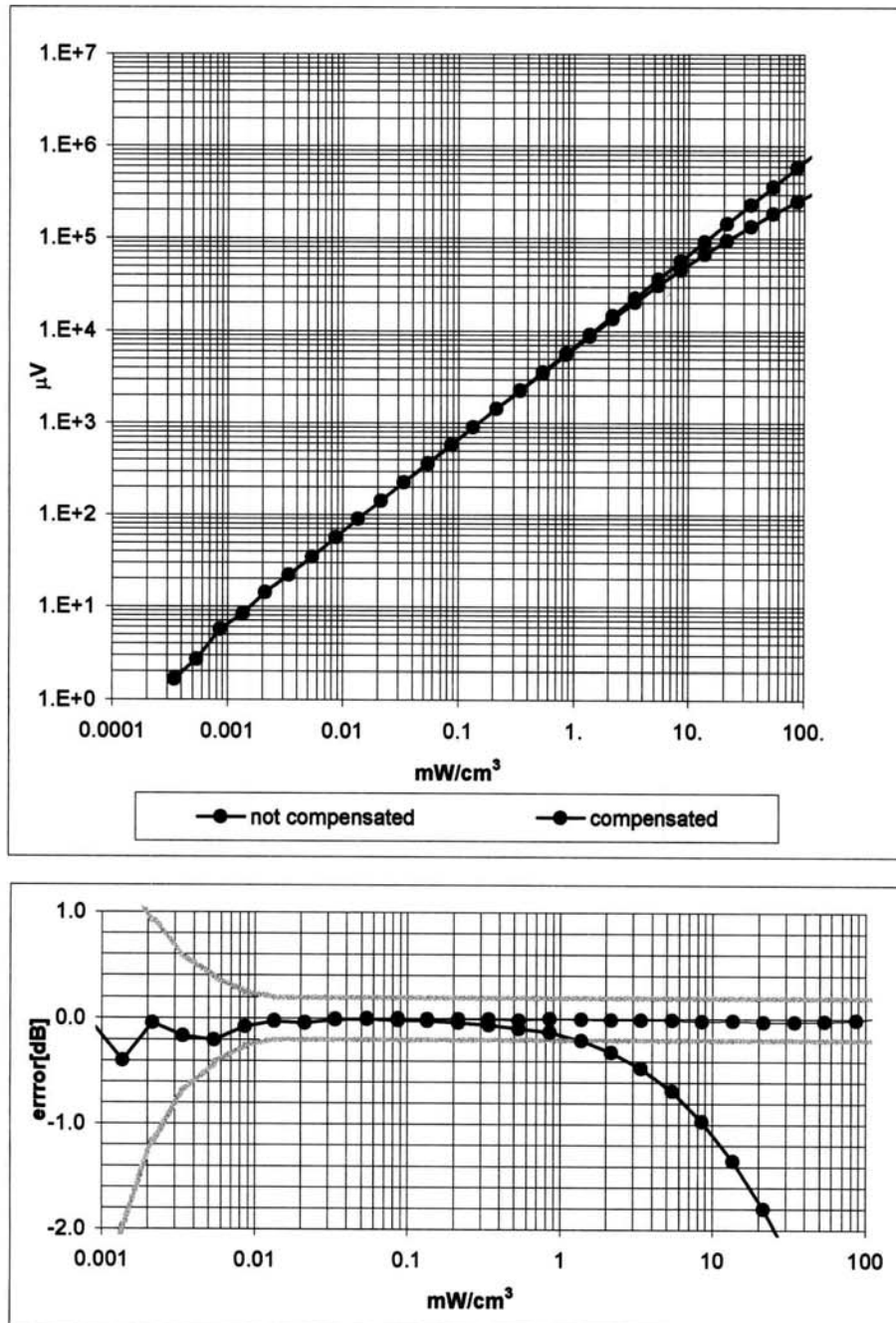


Receiving Pattern (ϕ) , $\theta = 0^\circ$



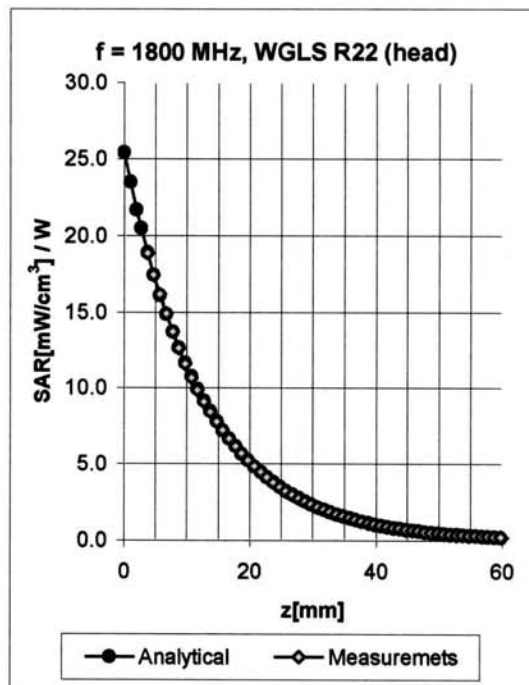
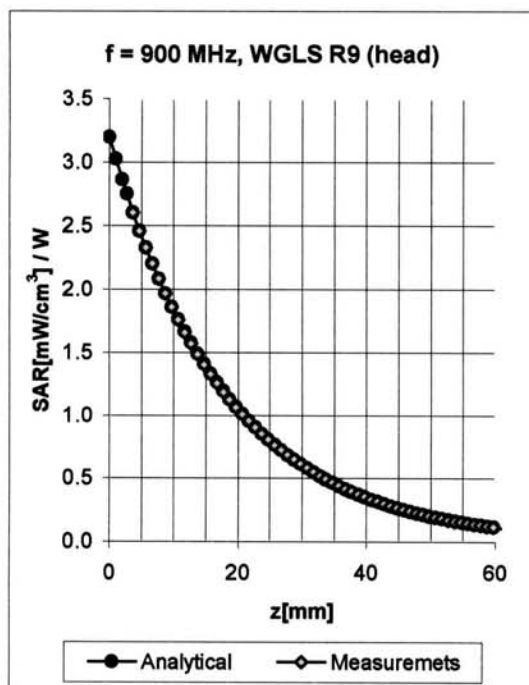
Axial Isotropy Error < ± 0.2 dB

Dynamic Range $f(\text{SAR}_{\text{head}})$ (Waveguide R22)



Probe Linearity $< \pm 0.2$ dB

Conversion Factor Assessment

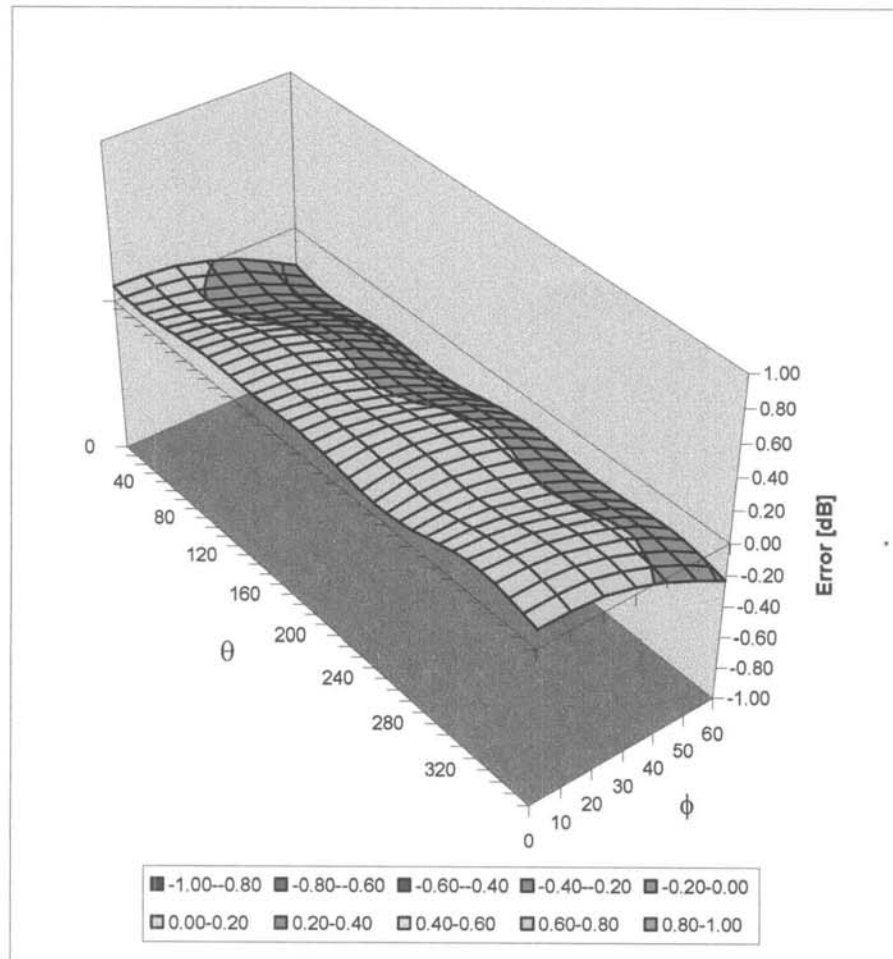


f [MHz]	Validity [MHz] ^B	Tissue	Permittivity	Conductivity	Alpha	Depth	ConvF	Uncertainty
835	750-950	Head	41.5 ± 5%	0.90 ± 5%	0.72	1.78	6.71	± 11.9% (k=2)
1750	1700-1800	Head	40.0 ± 5%	1.40 ± 5%	0.51	2.67	5.38	± 9.7% (k=2)
1900	1850-1950	Head	40.0 ± 5%	1.40 ± 5%	0.55	2.66	5.25	± 9.7% (k=2)
2450	2400-2500	Head	39.2 ± 5%	1.80 ± 5%	0.99	1.89	4.77	± 9.7% (k=2)
835	750-950	Body	55.2 ± 5%	0.97 ± 5%	0.56	2.04	6.24	± 11.9% (k=2)
1750	1700-1800	Body	53.3 ± 5%	1.52 ± 5%	0.58	2.82	4.68	± 9.7% (k=2)
1900	1850-1950	Body	53.3 ± 5%	1.52 ± 5%	0.62	2.77	4.57	± 9.7% (k=2)
2450	2400-2500	Body	52.7 ± 5%	1.95 ± 5%	1.75	1.28	4.50	± 9.7% (k=2)

^B The total standard uncertainty is calculated as root-sum-square of standard uncertainty of the Conversion Factor at calibration frequency and the standard uncertainty for the indicated frequency band.

Deviation from Isotropy in HSL

Error (θ, ϕ), $f = 900$ MHz



Spherical Isotropy Error $< \pm 0.4$ dB

Additional Conversion Factors

for Dosimetric E-Field Probe

Type:

ET3DV6

Serial Number:

1387

Place of Assessment:

Zurich

Date of Assessment:

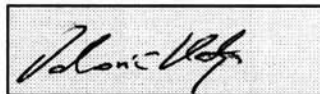
March 22, 2004

Probe Calibration Date:

March 18, 2004

Schmid & Partner Engineering AG hereby certifies that conversion factor(s) of this probe have been evaluated on the date indicated above. The assessment was performed using the FDTD numerical code SEMCAD of Schmid & Partner Engineering AG. Since the evaluation is coupled with measured conversion factors, it has to be recalculated yearly, i.e., following the re-calibration schedule of the probe. The uncertainty of the numerical assessment is based on the extrapolation from measured value at 900 MHz or at 1800 MHz.

Assessed by:



Dosimetric E-Field Probe ET3DV6 SN:1387

Conversion factor (\pm standard deviation)

150 MHz	ConvF	9.1 \pm 8%	$\epsilon_r = 52.3 \pm 5\%$ $\sigma = 0.76 \pm 5\%$ mho/m (head tissue)
300 MHz	ConvF	7.8 \pm 8%	$\epsilon_r = 45.3 \pm 5\%$ $\sigma = 0.87 \pm 5\%$ mho/m (head tissue)
450 MHz	ConvF	7.5 \pm 8%	$\epsilon_r = 43.5 \pm 5\%$ $\sigma = 0.87 \pm 5\%$ mho/m (head tissue)
150 MHz	ConvF	8.7 \pm 8%	$\epsilon_r = 61.9 \pm 5\%$ $\sigma = 0.80 \pm 5\%$ mho/m (body tissue)
450 MHz	ConvF	7.6 \pm 8%	$\epsilon_r = 56.7 \pm 5\%$ $\sigma = 0.94 \pm 5\%$ mho/m (body tissue)

Important Note:

For numerically assessed probe conversion factors, parameters Alpha and Delta in the DASY software must have the following entries: Alpha = 0 and Delta = 1.

Please see also Section 4.7 of the DASY4 Manual.

APPENDIX E - MEASURED FLUID DIELECTRIC PARAMETERS

450 MHz System Performance Check

Measured Fluid Dielectric Parameters (Brain)

January 12, 2005

Frequency	e'	e''
350.000000 MHz	44.4566	38.1173
360.000000 MHz	44.0656	37.5707
370.000000 MHz	43.8532	36.9541
380.000000 MHz	43.5935	36.4849
390.000000 MHz	43.3370	35.9440
400.000000 MHz	43.0723	35.4109
410.000000 MHz	42.8623	34.8967
420.000000 MHz	42.6308	34.4496
430.000000 MHz	42.3602	33.9321
440.000000 MHz	42.1729	33.5217
450.000000 MHz	41.9855	33.1201
460.000000 MHz	41.7867	32.7744
470.000000 MHz	41.5221	32.3555
480.000000 MHz	41.3353	31.9777
490.000000 MHz	41.0736	31.6275
500.000000 MHz	40.8510	31.3536
510.000000 MHz	40.6846	31.0655
520.000000 MHz	40.5157	30.7238
530.000000 MHz	40.2480	30.4280
540.000000 MHz	40.1427	30.0139
550.000000 MHz	39.8879	29.7953

450 MHz DUT Evaluation (Face)

Measured Fluid Dielectric Parameters (Brain)

January 13, 2005

Frequency	e'	e''
350.000000 MHz	45.2574	39.3272
360.000000 MHz	45.0008	38.6812
370.000000 MHz	44.7828	38.0651
380.000000 MHz	44.5430	37.5387
390.000000 MHz	44.2004	36.9575
400.000000 MHz	44.0344	36.4862
410.000000 MHz	43.7192	35.9160
420.000000 MHz	43.4905	35.4410
430.000000 MHz	43.2427	34.9035
440.000000 MHz	43.0456	34.4499
450.000000 MHz	42.7628	34.0576
460.000000 MHz	42.6124	33.6171
470.000000 MHz	42.3876	33.2966
480.000000 MHz	42.1861	32.8982
490.000000 MHz	41.9380	32.5932
500.000000 MHz	41.7760	32.2363
510.000000 MHz	41.6002	31.8622
520.000000 MHz	41.4221	31.5358
530.000000 MHz	41.2311	31.1919
540.000000 MHz	41.0698	30.8005
550.000000 MHz	40.8533	30.5109

450 MHz DUT Evaluation (Body)


Measured Fluid Dielectric Parameters (Muscle)

January 13, 2005

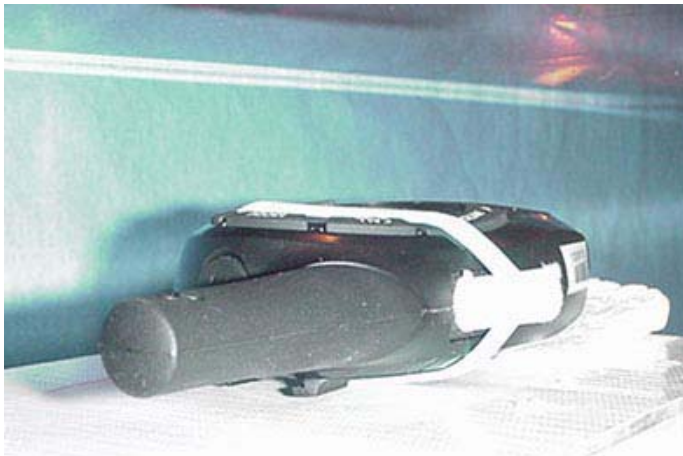
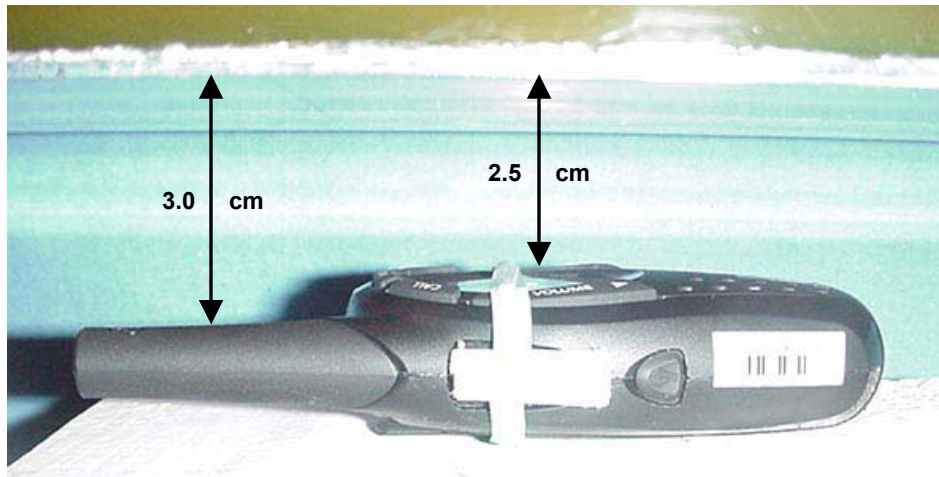
Frequency	e'	e''
350.000000 MHz	58.4920	42.7093
360.000000 MHz	58.2746	41.8979
370.000000 MHz	58.0319	41.2237
380.000000 MHz	57.9157	40.5727
390.000000 MHz	57.6944	39.9161
400.000000 MHz	57.5117	39.3050
410.000000 MHz	57.4102	38.6441
420.000000 MHz	57.2136	38.1108
430.000000 MHz	57.1046	37.4744
440.000000 MHz	56.9803	36.9447
450.000000 MHz	56.8258	36.4327
460.000000 MHz	56.7203	35.9497
470.000000 MHz	56.5415	35.5371
480.000000 MHz	56.3581	35.0695
490.000000 MHz	56.1824	34.6890
500.000000 MHz	55.9758	34.2949
510.000000 MHz	55.7906	33.9624
520.000000 MHz	55.6385	33.6683
530.000000 MHz	55.4803	33.3199
540.000000 MHz	55.4516	32.9447
550.000000 MHz	55.3071	32.6162


Test Report S/N:	010405BBO-T608-S95U
Test Date(s):	January 12-13, 2005
Test Type:	FCC/IC SAR Evaluation

APPENDIX F - SAR TEST SETUP & DUT PHOTOGRAPHS

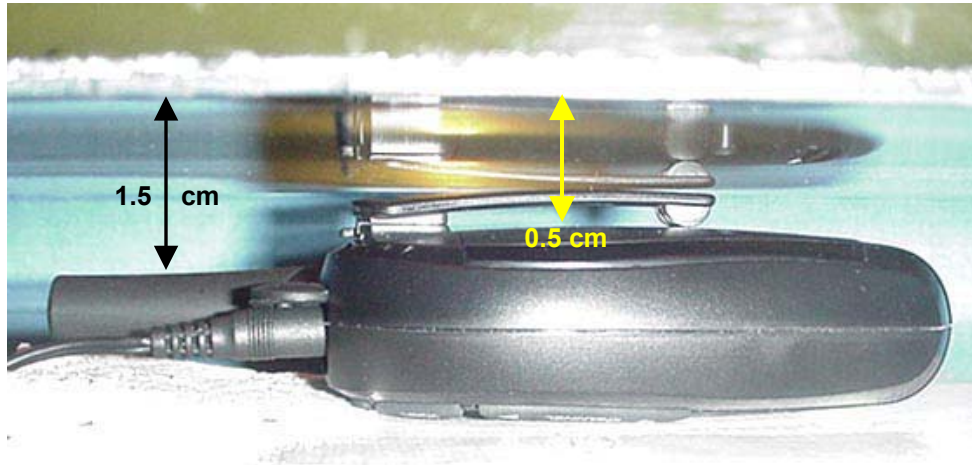
Applicant:	Cobra Electronics Corporation	FCC ID:	BBOPR250	IC ID:	906B-PR250
Model(s):	PR250WX / PR590WX	Portable UHF FRS/GMRS PTT Radio Transceiver	462.5500 - 467.7125 MHz		
2005 Celltech Labs Inc.		This document is not to be reproduced in whole or in part without the written permission of Celltech Labs Inc.			20 of 20

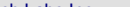
FACE-HELD SAR TEST SETUP PHOTOGRAPHS
2.5 cm Separation Distance from Front of Radio to Planar Phantom




Applicant:	Cobra Electronics Corporation		FCC ID:	BBOPR250	IC ID:	906B-PR250
Model(s):	PR250WX / PR590WX	Portable UHF FRS/GMRS PTT Radio Transceiver		462.5500 - 467.7125 MHz		
2005 Celltech Labs Inc. This document is not to be reproduced in whole or in part without the written permission of Celltech Labs Inc.						

0.5 cm Belt-Clip Separation Distance to Planar Phantom with Generic Earbud/Lapel-Microphone Accessory




Applicant:	Cobra Electronics Corporation	FCC ID:	BBOPR250	IC ID:	906B-PR250
Model(s):	PR250WX / PR590WX	Portable UHF FRS/GMRS PTT Radio Transceiver	462.5500 - 467.7125 MHz		
2005 Celltech Labs Inc.		This document is not to be reproduced in whole or in part without the written permission of Celltech Labs Inc.			

Applicant:	Cobra Electronics Corporation	FCC ID:	BBOPR250	IC ID:	906B-PR250
Model(s):	PR250WX / PR590WX	Portable UHF FRS/GMRS PTT Radio Transceiver	462.5500 - 467.7125 MHz		
2005 Celltech Labs Inc.		This document is not to be reproduced in whole or in part without the written permission of Celltech Labs Inc.			

A black Cobra CB radio with a silver faceplate. The faceplate features a digital display showing "12.1 K" and the Cobra logo. Surrounding the display are buttons labeled "MODE", "CALL", "LOCK", "CHANNEL", and "VOLUME". The radio has a large antenna on top and a speaker grille at the bottom.

[illegible]

A black handheld electronic device, possibly a calculator or a small PDA, with a circular screen at the top. Below the screen is a keypad with many small buttons. A small white label with the word "Test" written on it is stuck to the keypad area. The device has a textured, slightly reflective surface.

Applicant:	Cobra Electronics Corporation	FCC ID:	BBOPR250	IC ID:	906B-PR250
Model(s):	PR250WX / PR590WX	Portable UHF FRS/GMRS PTT Radio Transceiver	462.5500 - 467.7125 MHz		
2005 Celltech Labs Inc.		This document is not to be reproduced in whole or in part without the written permission of Celltech Labs Inc.			

DUT PHOTOGRAPHS




Left Side of DUT with Belt-Clip




Right Side of DUT with Belt-Clip




Plastic Belt-Clip Accessory

Applicant:	Cobra Electronics Corporation		FCC ID:	BBOPR250	IC ID:	906B-PR250
Model(s):	PR250WX / PR590WX	Portable UHF FRS/GMRS PTT Radio Transceiver		462.5500 - 467.7125 MHz		
2005 Celltech Labs Inc. This document is not to be reproduced in whole or in part without the written permission of Celltech Labs Inc.						

A black Cobra radio with a microphone and a "Test" button. The radio has a small LCD screen and several control buttons. A coiled cable is attached to the side.

Applicant:	Cobra Electronics Corporation	FCC ID:	BBOPR250	IC ID:	906B-PR250
Model(s):	PR250WX / PR590WX	Portable UHF FRS/GMRS PTT Radio Transceiver	462.5500 - 467.7125 MHz		
2005 Celltech Labs Inc.		This document is not to be reproduced in whole or in part without the written permission of Celltech Labs Inc.			

A black plastic battery compartment, likely for a handheld device, is shown. It contains four Duracell Procell AA alkaline batteries. The batteries are oriented vertically with the positive terminal at the top. The compartment has a latch at the top and a cross-shaped cutout at the bottom. The text on the batteries is clearly visible, including 'DURACELL', 'PROCELL', 'Professional Alkaline Battery', and 'AA'.

Applicant:	Cobra Electronics Corporation	FCC ID:	BBOPR250	IC ID:	906B-PR250
Model(s):	PR250WX / PR590WX	Portable UHF FRS/GMRS PTT Radio Transceiver	462.5500 - 467.7125 MHz		
2005 Celltech Labs Inc.		This document is not to be reproduced in whole or in part without the written permission of Celltech Labs Inc.			