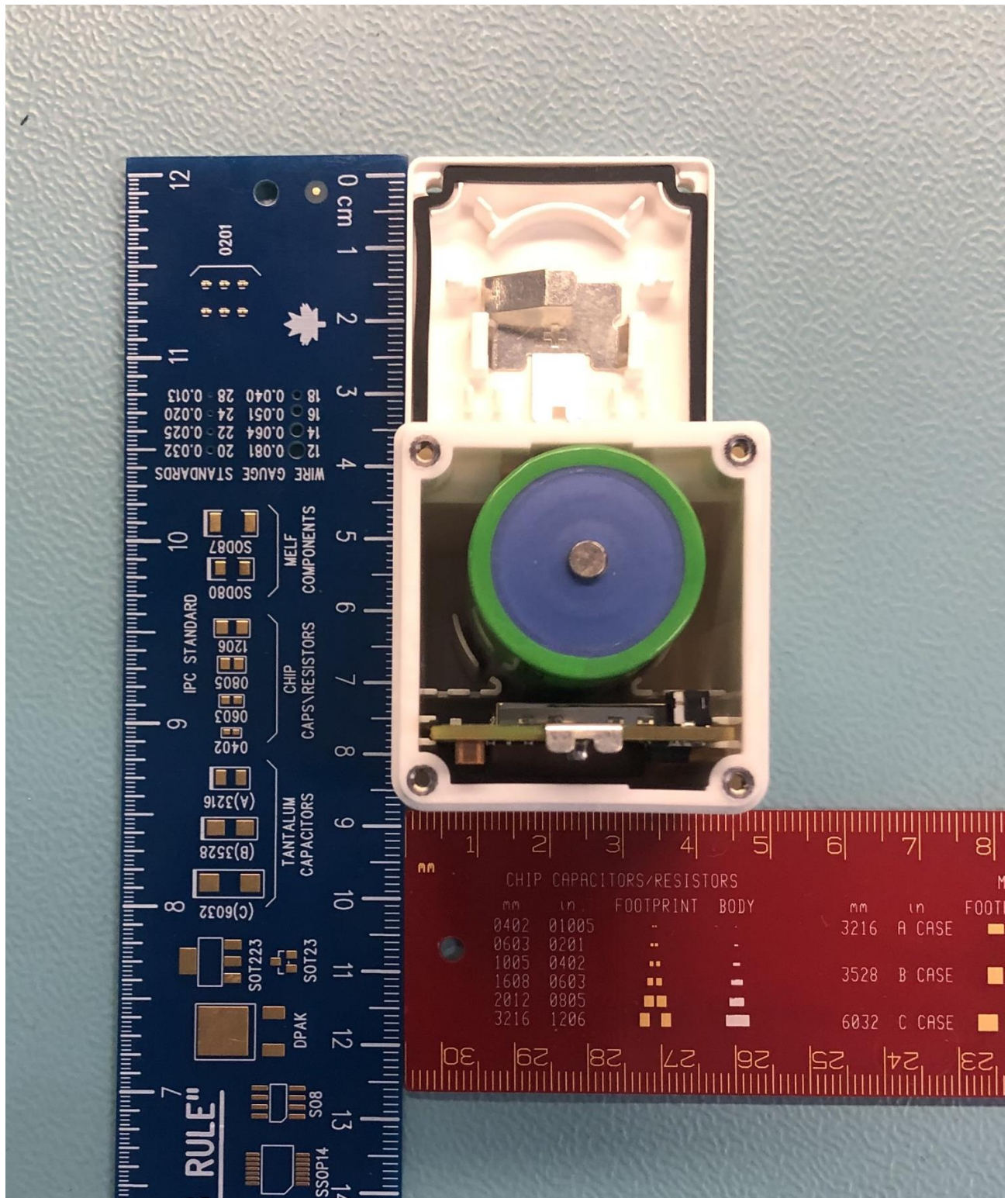


FCC ID: 2ALEPT0008710

EUT Internal

Photo IC: 22504-T0008710

T0008781 (STORK, Battery Power) enclosure open

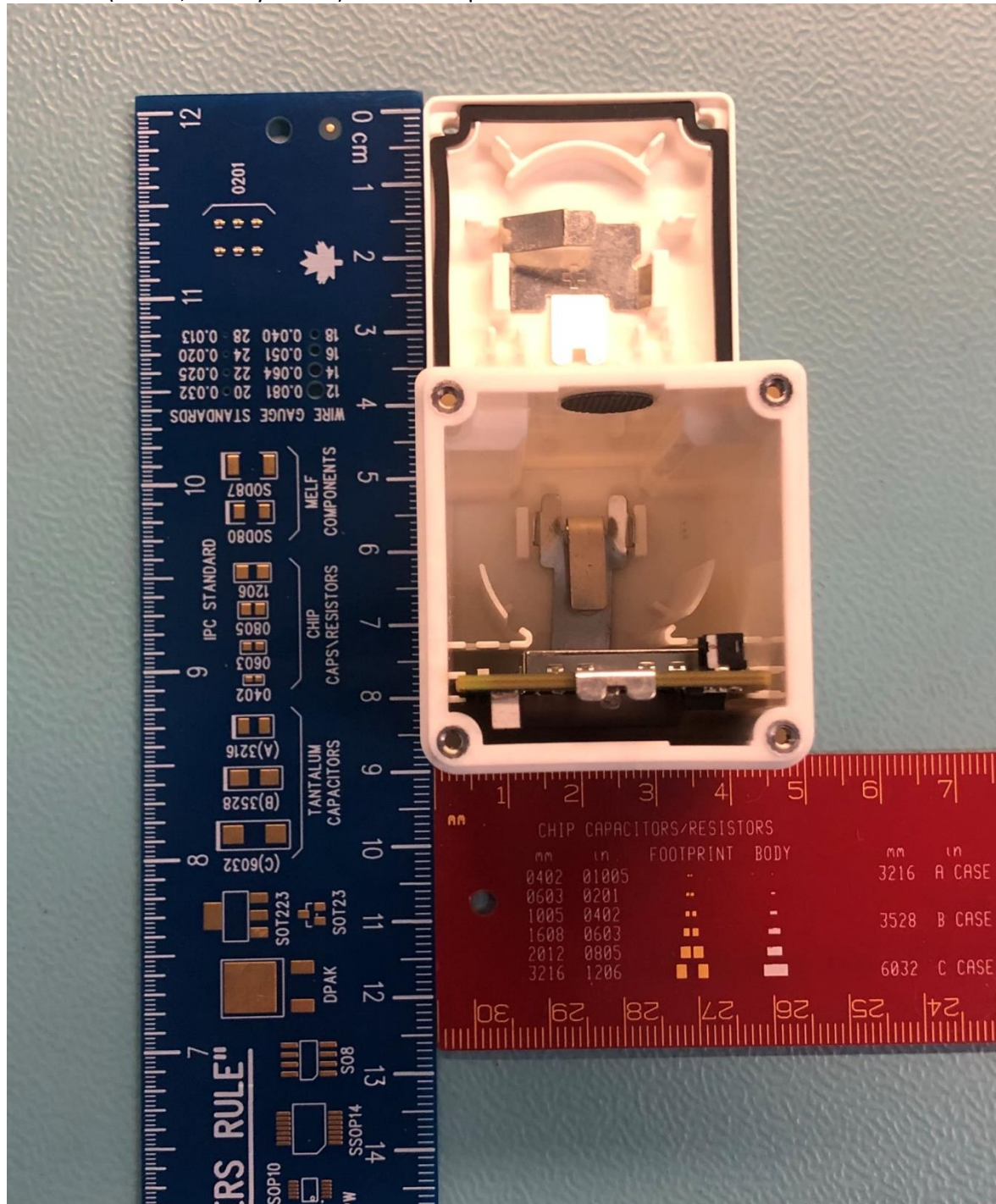


FCC ID: 2ALEPT0008710

EUT Internal

Photo IC: 22504-T0008710

T0008781 (STORK, Battery Power) enclosure open with no batteries



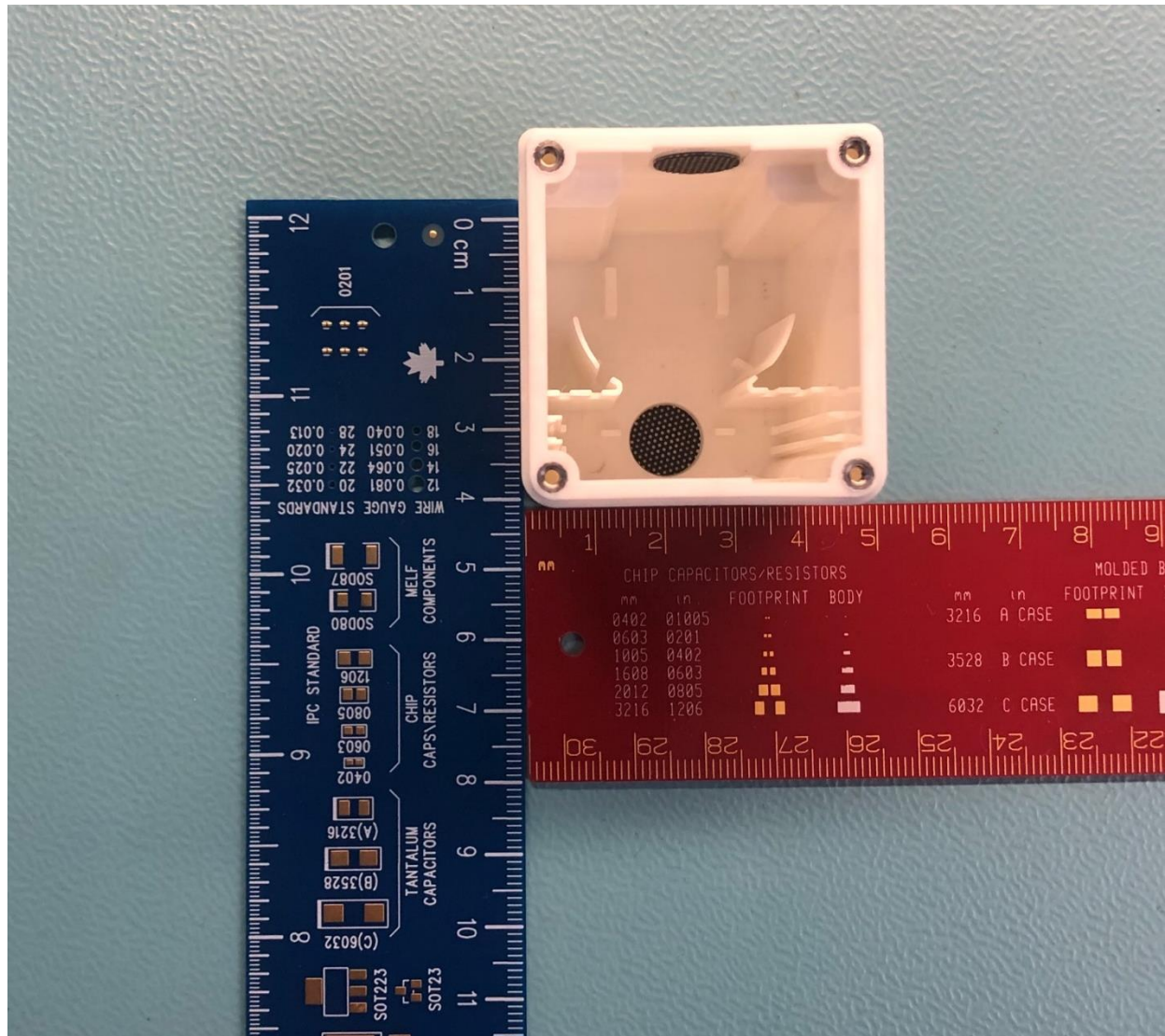


FCC ID: 2ALEPT0008710

EUT Internal

Photo IC: 22504-T0008710

T0008781 (STORK, Battery Power) body enclosure only

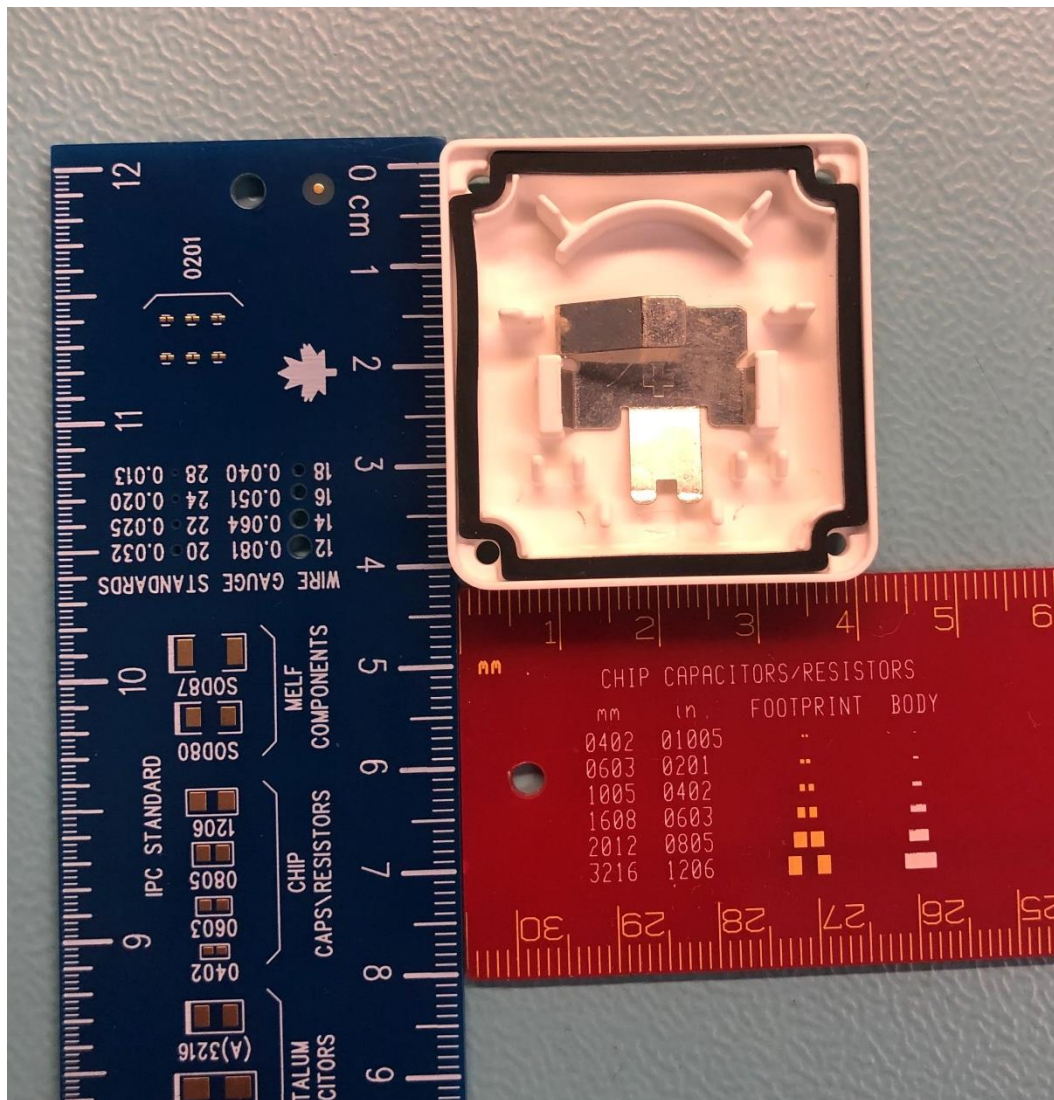


FCC ID: 2ALEPT0008710

EUT Internal

Photo IC: 22504-T0008710

T0008781 (STORK, Battery Power) battery endcap only

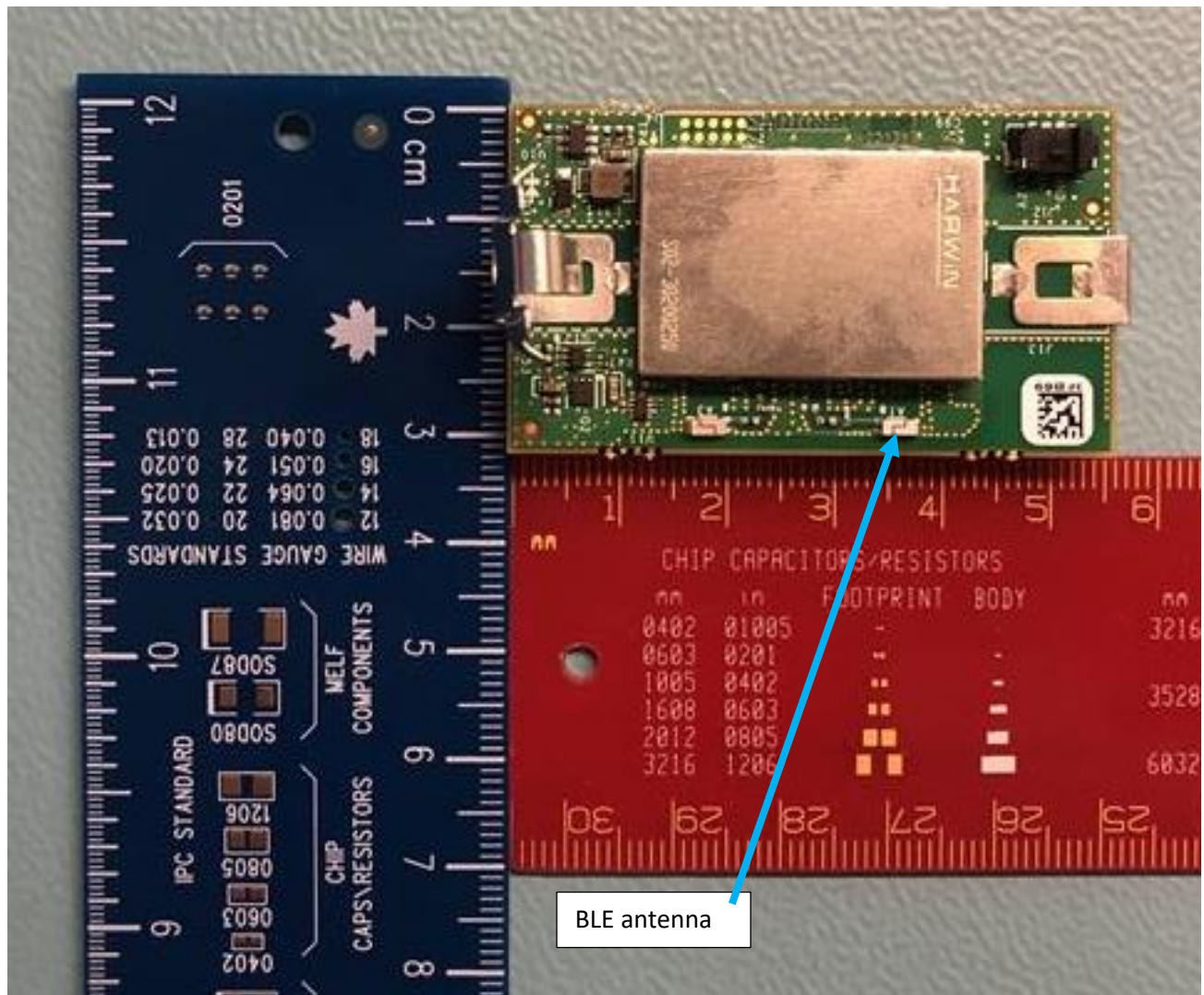


FCC ID: 2ALEPT0008710

EUT Internal

Photo IC: 22504-T0008710

T0008781 (STORK, Battery Power) PCBA with radio shield, back view



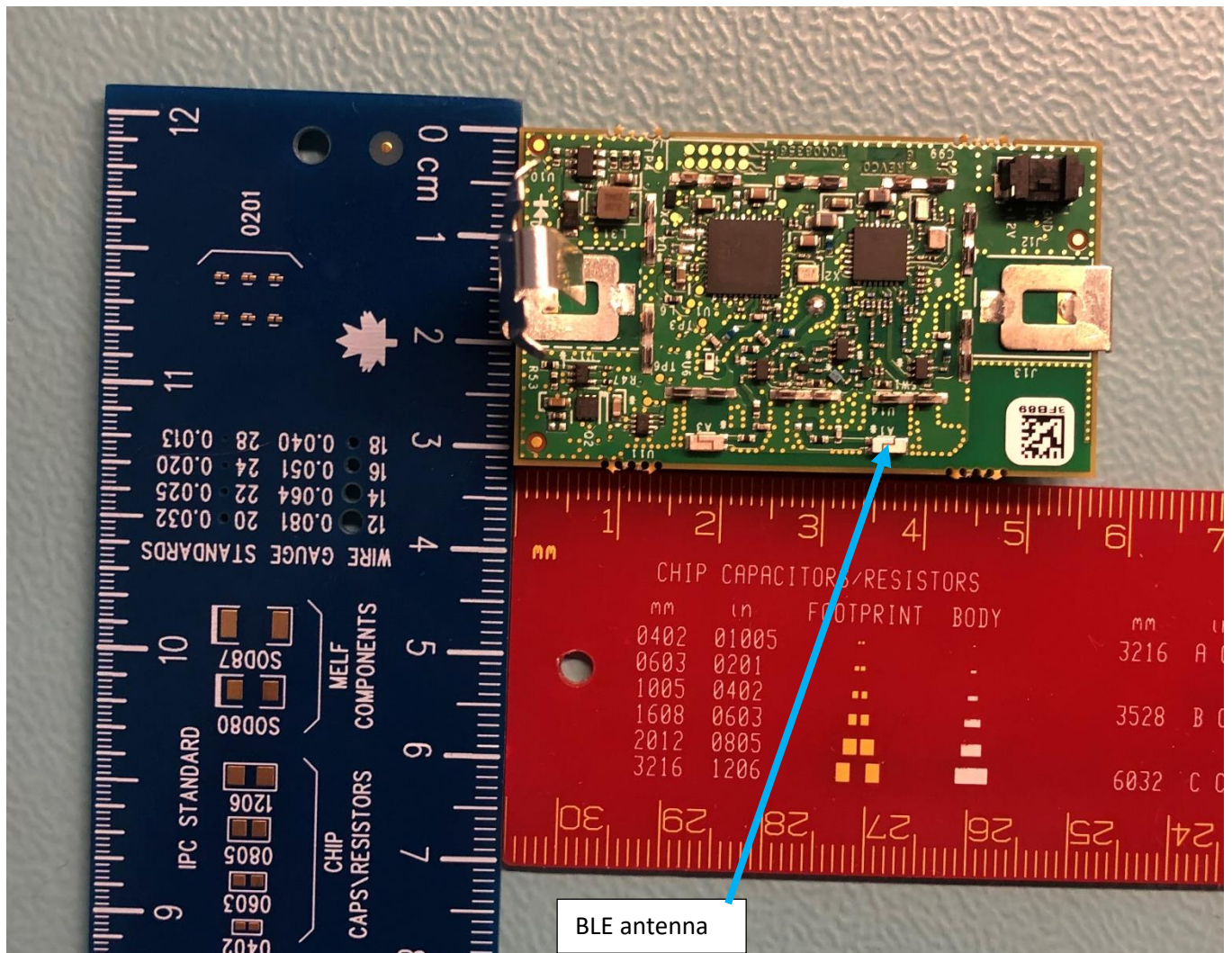


FCC ID: 2ALEPT0008710

EUT Internal

Photo IC: 22504-T0008710

T0008781 (STORK, Battery Power) PCBA without shield, back view

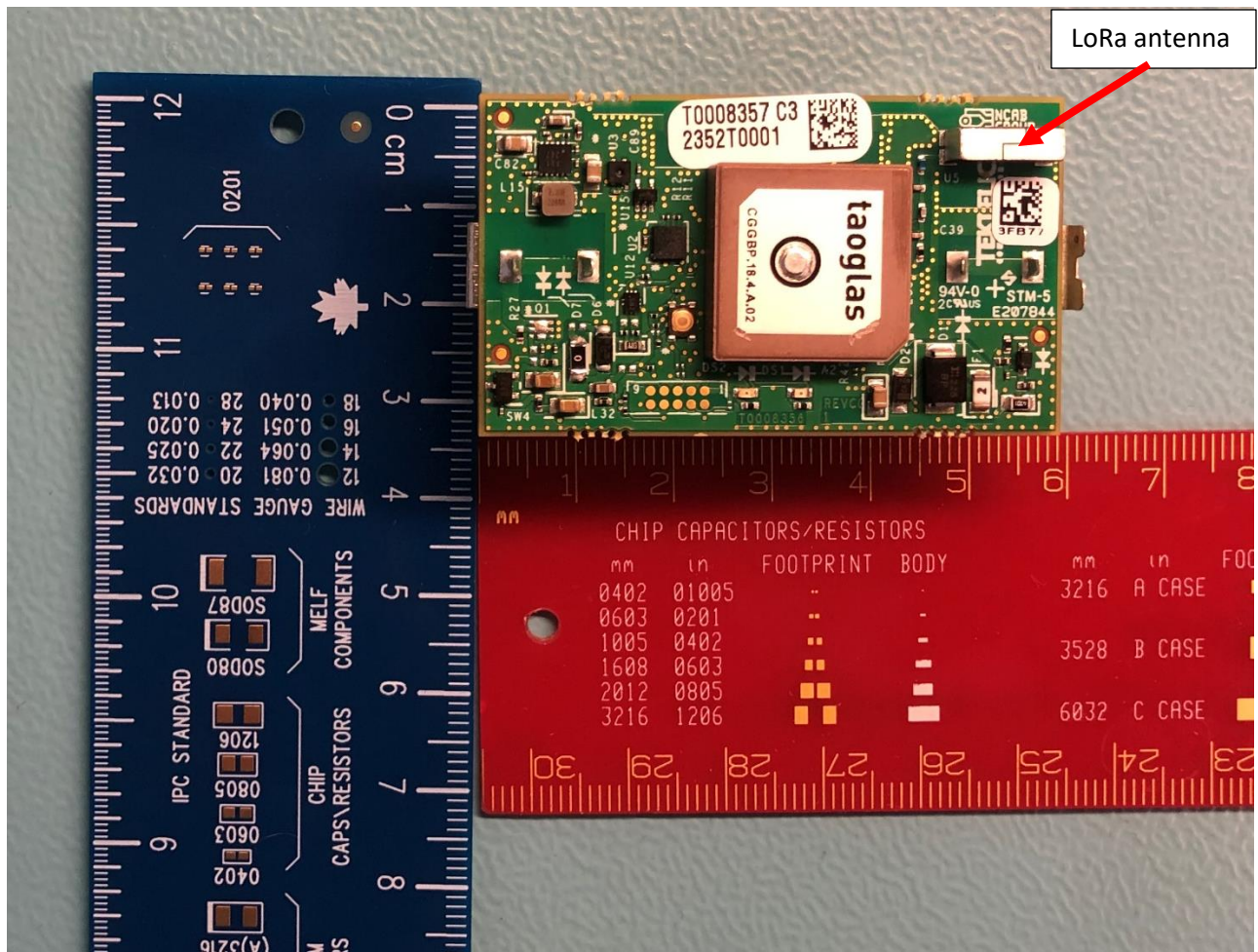


FCC ID: 2ALEPT0008710

Photo IC: 22504-T0008710

T0008781 (STORK, Battery Power) PCBA front view

EUT Internal



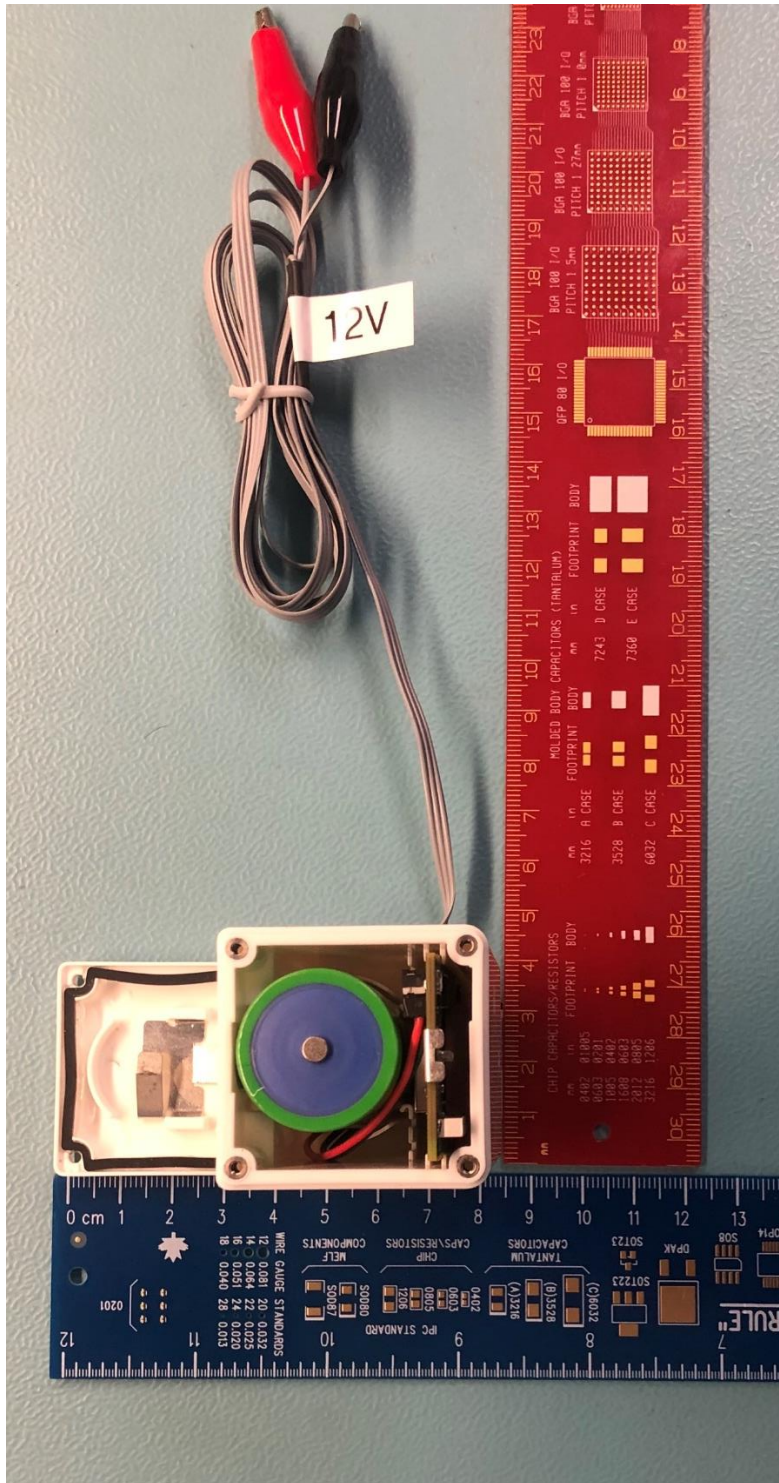


FCC ID: 2ALEPT0008710

Photo IC: 22504-T0008710

T0008396 (STORK, External Power) enclosure open

EUT Internal



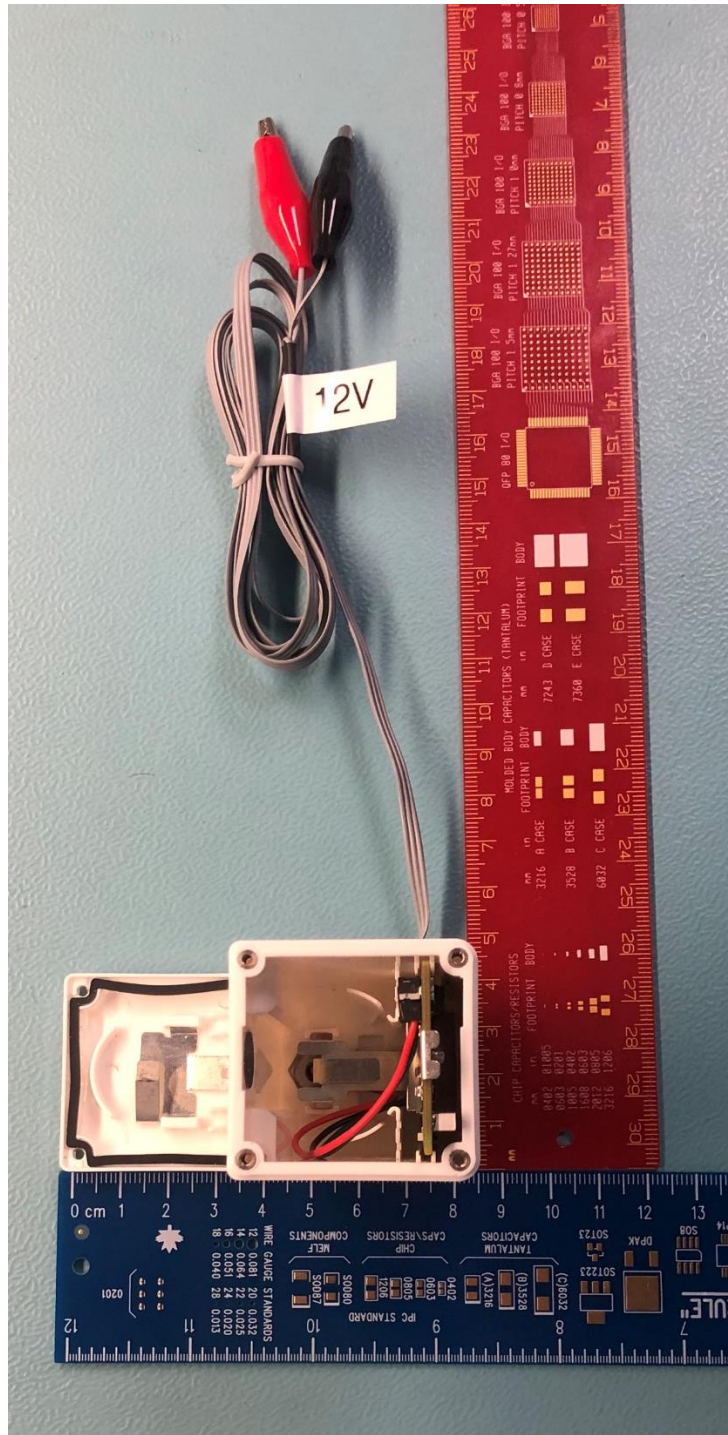


FCC ID: 2ALEPT0008710

Photo IC: 22504-T0008710

T0008396 (STORK, External Power) enclosure open with no batteries

EUT Internal

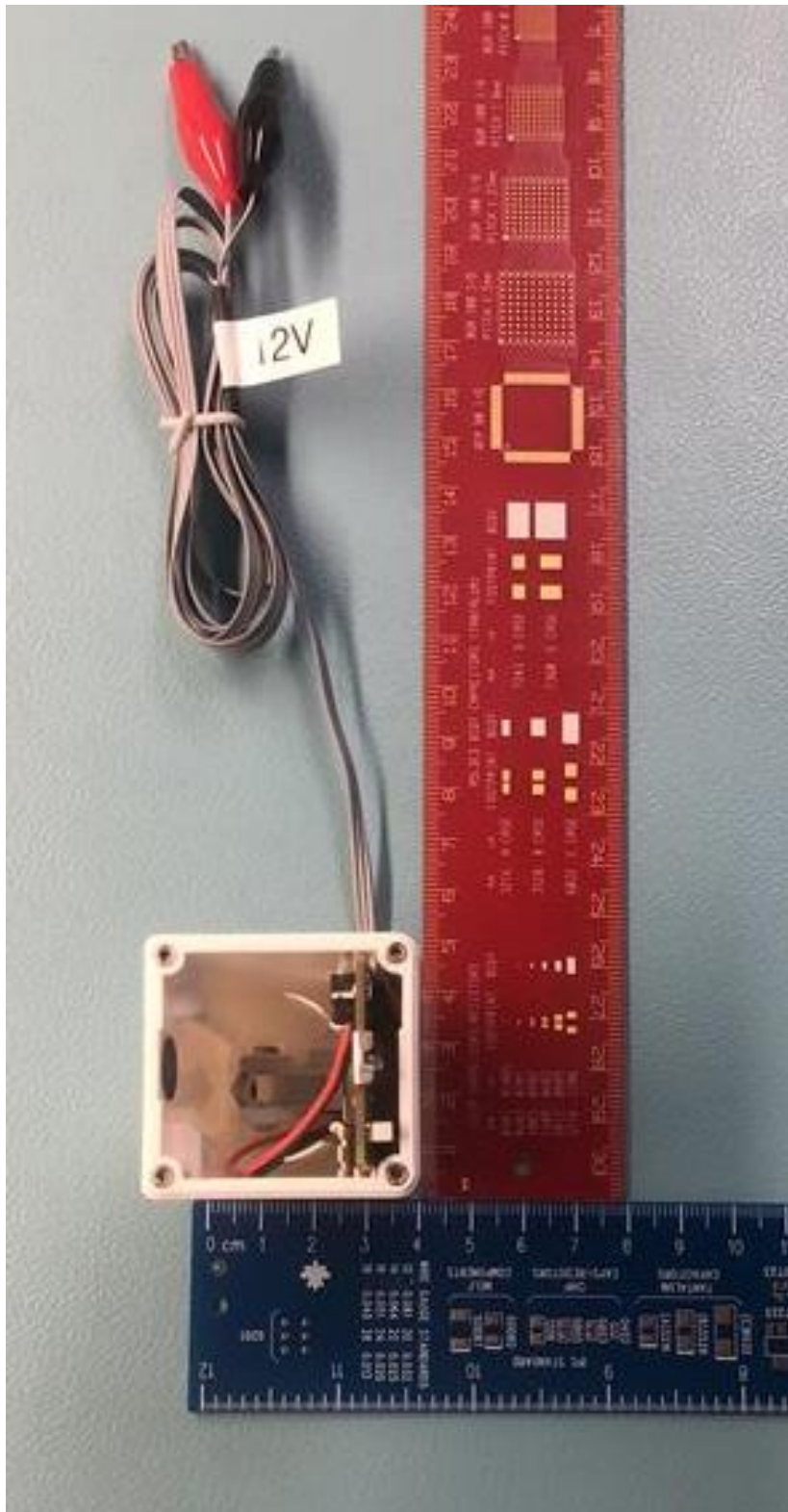


FCC ID: 2ALEPT0008710

Photo IC: 22504-T0008710

T0008396 (STORK, External Power) body enclosure only

EUT Internal



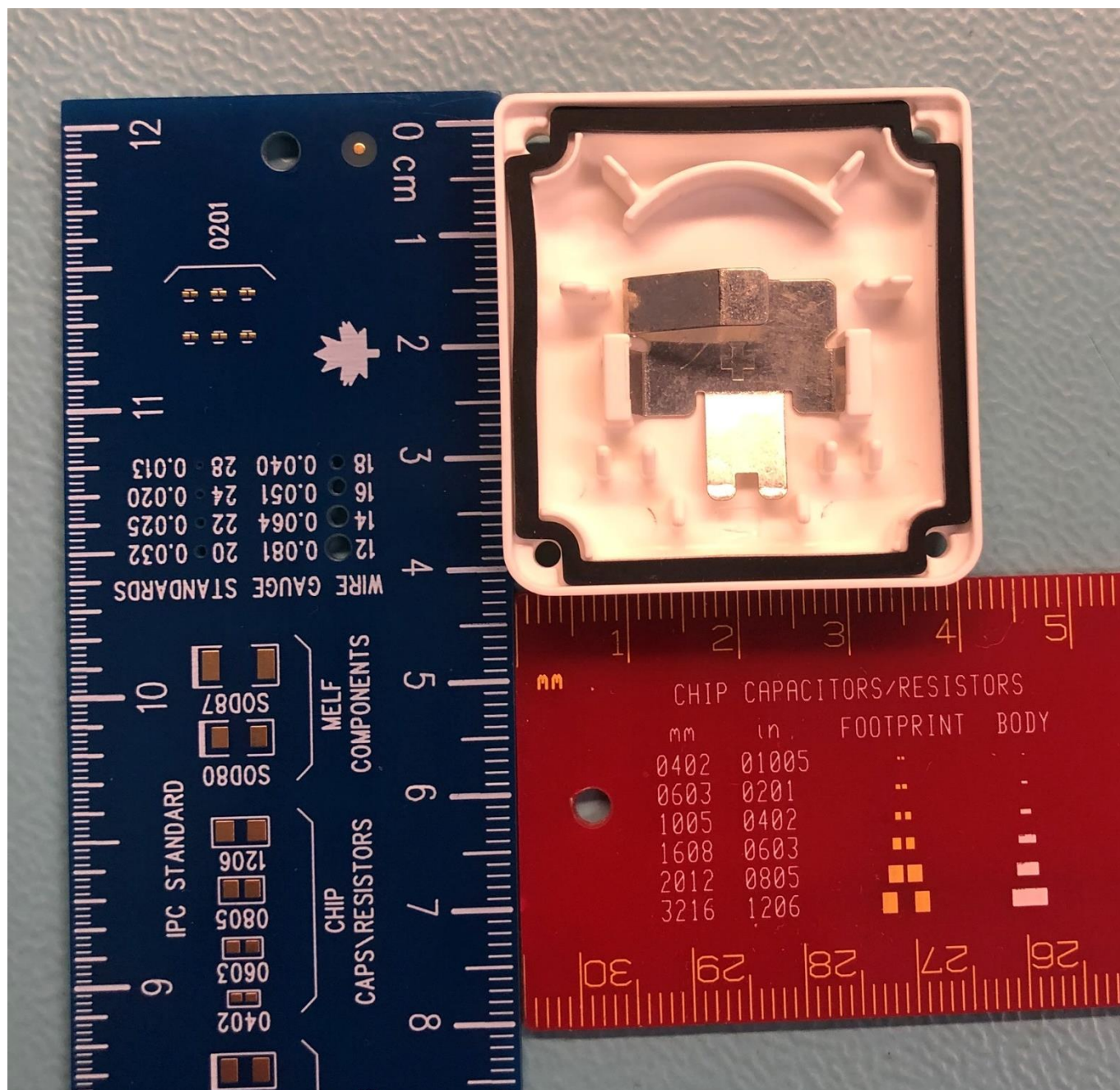


FCC ID: 2ALEPT0008710

EUT Internal

Photo IC: 22504-T0008710

T0008396 (STORK, External Power) battery endcap only

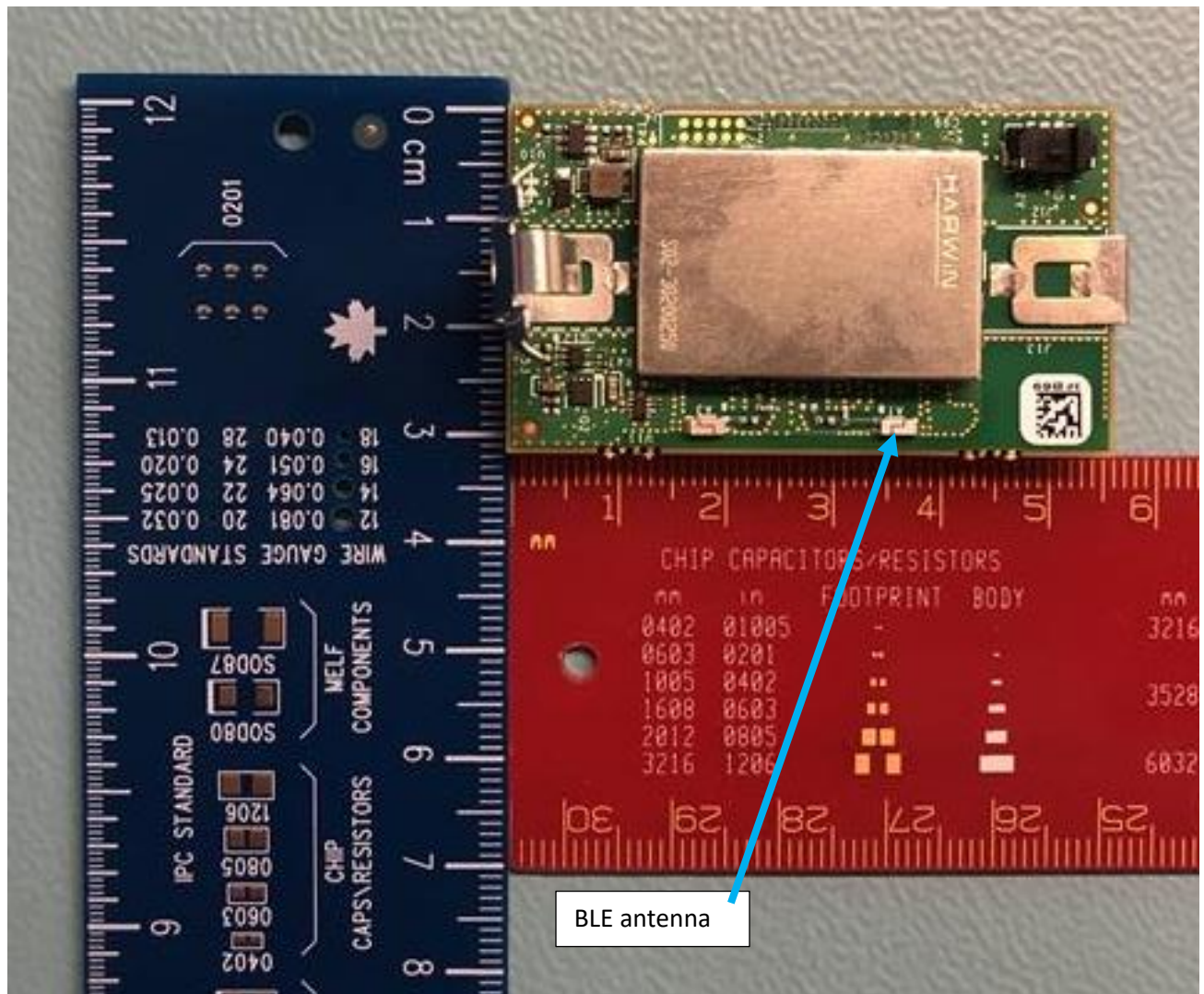


FCC ID: 2ALEPT0008710

EUT Internal

Photo IC: 22504-T0008710

T0008396 (STORK, External Power) PCBA with radio shield, back view



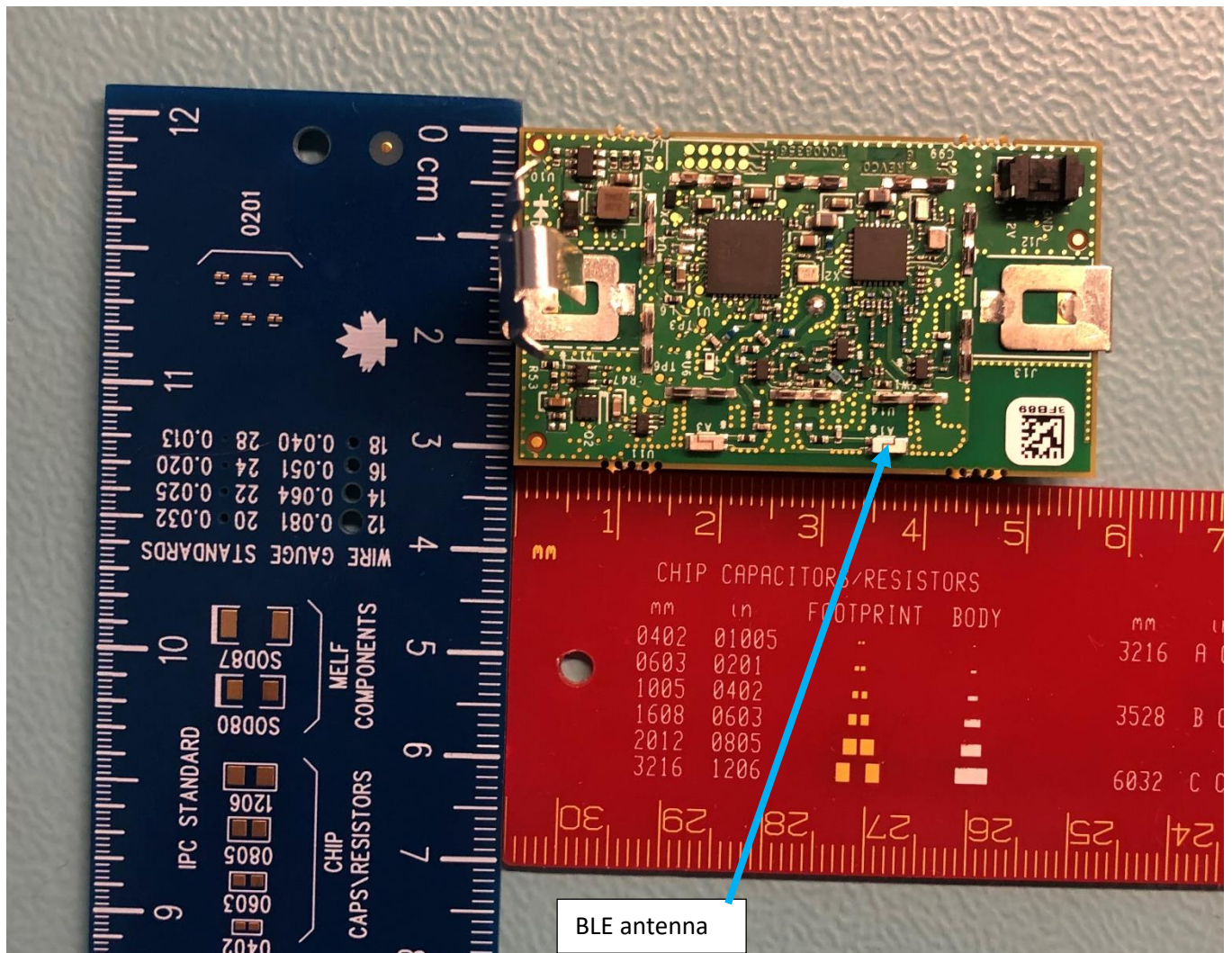


FCC ID: 2ALEPT0008710

EUT Internal

Photo IC: 22504-T0008710

T0008396 (STORK, External Power) PCBA without radio shield, back view



FCC ID: 2ALEPT0008710

Photo IC: 22504-T0008710

T0008396 (STORK, External Power) PCBA, front view

EUT Internal

