



2.1CH TV Stand Bluetooth Sound Base Speaker

MODEL:ITSB-350



Instruction Manual

Please read this instruction manual carefully before use and keep for future reference.

QUICK START GUIDE

1. Make sure to remove ALL items before discarding package.

This includes:

- 1 X Remote Control
- 1 X Instruction Manual
- 1 X RCA Cable
- 1 X 3.5mm Aux in Cable

2. Connect your smartphone, tablet or other audio device via Bluetooth.

- Press the **BT** button on the unit or press the SOURCE button on the remote control repeatedly until 'BT' appears on display.
- Make sure Bluetooth is enabled on your device. Once "ITSB-350" appears in the list of devices, select it. If asked for a password, enter '0000'.
- The unit will produce an audible beep once a connection is established.

- See page 8 -11 for further instructions on listening to the FM radio, connecting via Bluetooth, connecting via AUX-IN or optical in.

1

CONTENTS

Safety Instructions.....	3
Product Overview.....	5
Remote Control and General Operation.....	6
Battery Installation (Remote Control).....	7
Playing Audio via FM Tuner.....	8
Playing Audio via Bluetooth Source.....	9
Playing Audio via AUX-IN Source.....	10
Playing Audio via Optical-In Source.....	11
Troubleshooting.....	12
Specifications.....	13
Warranty.....	14

2

SAFETY INSTRUCTIONS



- Read these instructions.
- Keep these instructions.
- Heed all warnings.
- Follow all instructions.
- Do not use this apparatus near water. This apparatus shall not be exposed to dripping or splashing, and no objects filled with liquids, such as vases, shall be placed on the apparatus.
- Clean only with a dry cloth.
- Do not block any ventilation openings. Install in accordance with the manufacturer's instructions. The apparatus should not be situated on a bed, sofa, rug or similar surface that may block the ventilation openings. The apparatus must not be placed in a built-in installation, such as a closed bookcase or cabinet that may impede the flow of air through the ventilation openings. Ventilation should not be impeded by covering the openings with items such as newspapers, tablecloths, curtains, etc.
- Do not install near any heat sources such as radiators, heat registers, stoves, or other apparatus (including amplifiers) that produce heat. Extended exposure to temperatures higher than 170 degrees Fahrenheit, for example inside a closed vehicle during the summer, may result in damage to your product.
- No open flame sources, such as lighted candles, should be placed on the apparatus.
- Do not defeat the safety purpose of the polarized or grounding-type plug. A polarized plug has two blades with one wider than the other. A grounding type plug has two blades and a third grounding prong. The wide blade or the third prong is provided for your safety. If the provided plug does not fit into your outlet, consult an electrician for the replacement of the obsolete outlet.
- Protect the power cord from being walked on or pinched - particularly at plugs, convenience receptacles, and the point where they exit from the apparatus.
- Do not install in an area which impedes the access to the power plug. Disconnecting the power plug is the only way to completely remove power to the product and must be readily accessible at all times.
- Power source - Use only power supplies of the type specified in the operating instructions or as marked on the appliance. If a separate power supply is included with this apparatus, do not substitute with any other power supply - use only manufacturer-provided power supplies.

3

- Unplug this apparatus during lightning storms or when unused for long periods of time.
- If the unit will be unused for long periods of time, the batteries should be removed.
- Do not place this product on an unstable surface. The product may fall, causing serious injury to a child or adult and serious damage to the product. Use only with a stand, bracket, or table recommended by the manufacturer, or sold with the product. Any mounting of the product should follow the manufacturer's instructions, and should use a mounting accessory recommended by the manufacturer.
- Move the appliance with care to avoid damage or injury.
- Refer all servicing to qualified service personnel. Servicing is required when the apparatus has been damaged in any way: the power-supply cord or plug is damaged, liquid has been spilled or objects have fallen into the apparatus, the apparatus has been exposed to rain or moisture, does not operate normally, or has been dropped
- For products which incorporate batteries, please refer to local regulations for proper battery disposal.

CALIFORNIA PROP 65 WARNING

"WARNING:" This product contains chemicals known to the State of California to cause birth defects or other reproductive harm. For more information on these regulations and a list of chemicals, log on to the following website address: <http://www.oehha.ca.gov/prop65.html>

Placement

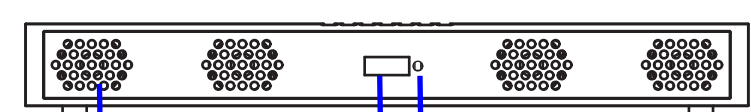
The unit must be put on a table. Choose a location:

- Where there is a nearby power connection.
- Where the front speakers have a direct line of sight to the listener for sound and for remote control operation.
- Where the unit is not positioned too close to a wall - allow 11.8in (30cm) of clearance if possible.

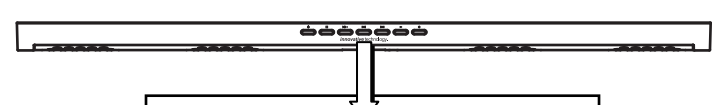
4

PRODUCT OVERVIEW

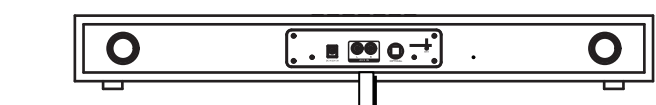
FRONT VIEW



TOP VIEW



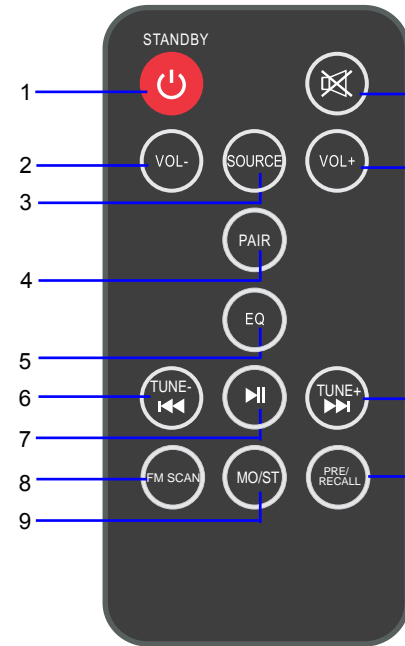
REAR VIEW



1. SPEAKER
2. DISPLAY
3. REMOTE SENSOR
4. POWER Button
5. SOURCE Button
6. PLAY/PAUSE/PAIR Button
7. TUNE DOWN/PREVIOUS Button
8. TUNE UP/NEXT Button
9. VOLUME DOWN Button
10. VOLUME UP Button
11. DC IN JACK
12. AUX IN JACKS(L/R)
13. OPTICAL IN JACK
14. ANTENNA WIRE

5

REMOTE CONTROL AND GENERAL OPERATION



1. STANDBY Button
2. VOL(volume)- Button
3. SOURCE Button
4. PAIR Button
5. EQ (equalizer) Button
6. TUNE- Button
7. HI Button
8. FM SCAN Button
9. MO/ST(Mono/Stereo) Button
10. MUTE Button
11. VOL(volume)+ Button
12. TUNE+ Button
13. PRE/RECALL Button

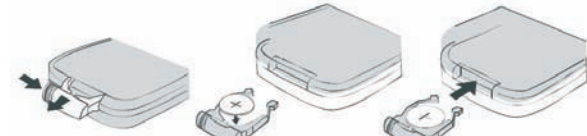
6

BATTERY INSTALLATION (REMOTE CONTROL)

Before First Use: Remove and discard the insulation tab as shown.

Battery Replacement

- Push and slide out the battery door (as shown in the figure below) on the rear of the remote control.
- Replace the battery with a new CR2025 button cell with the polarity "+" facing up.



Battery Precautions

Follow these precautions when using a battery in this device:

- Use only the size and type of battery specified.
- Be sure to follow the correct polarity when installing the battery as indicated in the battery compartment. A reversed battery may cause damage to the device.
- Do not mix different types of batteries together (e.g. Alkaline and Carbon-zinc) or old batteries with fresh ones.
- If the batteries in the device are consumed or device is not to be used for a long period of time, remove the batteries to prevent damage or injury from possible battery leakage.
- Do not try to recharge the battery not intended to be recharged; it can overheat and rupture. (Follow battery manufacturer's instructions.)
- The batteries shall not be exposed to excessive heat such as sunshine, fire or the like.
- Clean the battery contacts and also those of the device prior to battery installation.
- This product contains a coin/button cell battery. If the coin/button cell battery is swallowed, it can cause severe internal burn in just 2 hours and can lead to death. Keep new and used batteries away from children. If the battery compartment does not close securely, stop using and keep it away from children. If you think batteries might have been swallowed or placed inside any part of the body, seek immediate medical attention.

REMOTE CONTROL OPERATING RANGE

Notes:

- When there is an obstacle between the unit and the remote, the remote may not operate.
- When direct sunlight, an incandescent lamp, fluorescent lamp or any other strong light shines on the REMOTE SENSOR of the unit, the remote operation may be unstable.

7

Connecting Power

Before connecting the power, check that the mains voltage on the rating plate of the back panel is the same as the voltage in your area.

- Insert the plug into the wall socket.

Turn the System On

- Press the () Button on unit.
- Or press the () /STANDBY button on remote control.

Turn the System Off

- Press the () Button on unit.
- Or press the () /STANDBY button on remote control.

PLAYING AUDIO VIA FM TUNER

FM Radio Antenna

Before using your unit for FM reception, unwrap and fully extend the antenna wire. You may need to adjust the position of the antenna wire for maximum signal strength.

LISTEN TO FM RADIO

- Power ON the unit as previous procedures.
- Press the **BT** button on the unit or press the SOURCE button on the Remote Control repeatedly until FM frequency appears on display.
- Press **TUNE-** or **TUNE+** button on remote control(or press **TUNE-** or **TUNE+** button on the unit) repeatedly to search the specific band. Press and hold the **TUNE-** or **TUNE+** button on remote control (or press and hold the **TUNE-** or **TUNE+** button on the unit), the unit will search automatically the available band back and forth then stop and play.)
- To store the band automatically, press FM SCAN button on remote control, the unit will scan all available band and store automatically.
- After finishing scanning, press "PRE/RECALL" button on remote control repeatedly to select and listen the desired preset channels.
- If the available FM station is stereo, the unit will play it in stereo mode automatically. If the reception is no good, press the MO/ST button on the Remote Control to switch it to Mono mode. Press again to turn back to Stereo mode.

8

PLAYING AUDIO VIA BLUETOOTH SOURCE

The TV STAND SOUND BASE includes Bluetooth connectivity. You can connect Bluetooth equipped mobile phones, tablets and laptop computers to play through your audio system.

Selecting Bluetooth Mode

- Press the **BT** button on the unit or press the SOURCE button on the remote control repeatedly until 'BT' appears on display.
 - The system will start searching for the device last connected, if the device is found, the system will reconnect the device automatically.
 - Please note, only one Bluetooth device can be connected to the TV STAND SOUND BASE at one time.
- Activate Bluetooth on your device (smartphone, tablet, computer, etc.).
- In the Bluetooth menu of your device, there should be an option to search for Bluetooth devices. Select this option.
 - Your device will now scan for other Bluetooth devices and should find the TV STAND SOUND BASE, identified as "ITSB-350".
 - Choose to pair with "ITSB-350".
 - If you are asked for a password, enter '0000'.
- Your Bluetooth device will now be connected. Once a connection has been established, the audio system will produce an audible beep. After pairing for the first time, the audio system will appear on the connection menu of your Bluetooth device.
- If you want to connect another BT device while playing, press "PAIR" Button on remote control or press and hold the **PAIR** Button on the unit to cut off current pairing, then try to connect the other BT device following above steps.

Playback Control

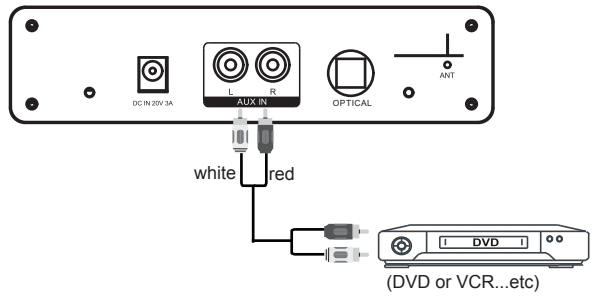
- Press the EQ button on the remote control to set to JAZZ, POP, ROCK, CLASS and NORM mode.
- Press the **TUNE+** or **TUNE-** button to skip the tracks.
- Press the **PAIR** button on the remote control or press the **PAIR** button on the unit to pause, press again to resume.

- These functions may not be available for all Bluetooth sources.

9

PLAYING AUDIO VIA AUX-IN SOURCE

- Connect the Aux out jacks from the external audio player (such like DVD player, VCR...etc.) to the AUX IN jacks on the rear of the unit by the supplied RCA connection cable as the figure below:



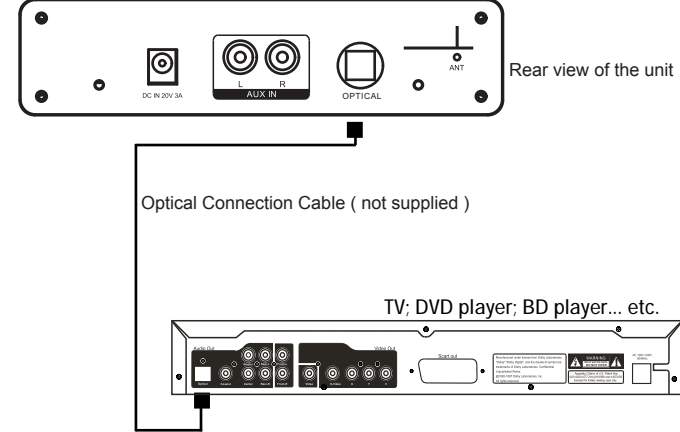
- Connect the unit to the power as previous procedures.
- Press the Standby () button on the unit or Remote Control to power on the unit.
- Press the **BT** button on the unit or press the SOURCE button on the Remote Control repeatedly until 'AUX' appears on display.
- Power on the connected external player and start playback music as usual.

- If the volume level is too low, try increasing the volume level on the source volume control.

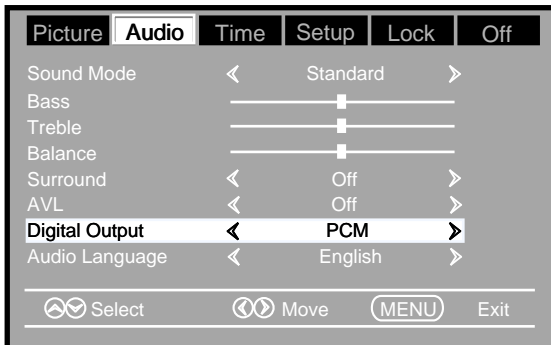
10

PLAYING AUDIO VIA OPTICAL-IN SOURCE

- Connect the Optical out jack from the external audio Player (such like TV, DVD Player BD Player...etc.) to the OPTICAL IN jack on the top of the unit by the Optical Connection Cable (not supplied) as the figure below: (For PCM format only.)



- Power on the unit as previous procedures.
- Press the **BT** button on the unit or press the SOURCE button on the Remote Control repeatedly until 'OPTI' appears on display.
- Power on the connected external player and start playback the Music as usual. Turn on the digital audio output and set it to PCM (Plus Code Modulation) type similar to the follows figure:



11

TROUBLESHOOTING

If you are having problems with your unit, please review the guide below before requesting service.

SYMPTOM	POSSIBLE CAUSE	POSSIBLE SOLUTION
No power	Power plug is not plugged into a wall outlet	Plug into the wall outlet properly
	The unit is in standby mode	Press the standby button on remote control to turn on the unit from standby mode
No sound	Volume is set to minimum	Increase volume level by pressing the VOL+ or - button
	The connected device is not in playing mode	Play the music/movie from the connected device
	Sound output of the connected device is set too low	Increase the volume level of the connected device
	Input source is incorrect	Press the SOURCE button repeatedly until correct source appears
Sound distortion	Volume level is too high	Reduce the volume level by pressing the VOL- or + button
	Volume level of the connected device is set too high	Reduce the volume level of the connected device
Remote not functioning	Out of range	Point the remote control to the remote sensor on the unit within 20 feet (6m), +/- 30 degrees
	The batteries in the remote control are dead	Replace with new batteries
Weak radio reception	Static or no signal due to interference	Extend the FM antenna wire on the rear of the unit and relocate it to get better reception

12

SPECIFICATIONS

Power Source.....	20 V ~ 3 A
Power Consumption.....	60W
Bluetooth Working Range.....	> 33ft (10m)
FM Coverage.....	87.5-108MHz
Type of Optical Digital Audio in.....	PCM



is a trademark on a registered trademark of Bluetooth SIG Inc. All other trademarks and trade names are those of their respective owners.

FCC STATEMENT

FCC Warning:

This device complies with Part 15 of the FCC Rules. Operation is subject to the following two conditions: (1) This device may not cause harmful interference, and (2) this device must accept any interference received, including interference that may cause undesired operation.

Changes or modifications not expressly approved by the party responsible for compliance could void the user's authority to operate the equipment.

NOTE: This equipment has been tested and found to comply with the limits for a Class B digital device, pursuant to Part 15 of the FCC Rules. These limits are designed to provide reasonable protection against harmful interference in a residential installation. This equipment generates, uses and can radiate radio frequency energy and, if not installed and used in accordance with the instructions, may cause harmful interference to radio communications. However, there is no guarantee that interference will not occur in a particular installation. If this equipment does cause harmful interference to radio or television reception, which can be determined by turning the equipment off and on, the user is encouraged to try to correct the interference by one or more of the following measures:

- Reorient or relocate the receiving antenna.
- Increase the separation between the equipment and receiver.
- Connect the equipment into an outlet on a circuit different from that to which the receiver is connected.
- Consult the dealer or an experienced radio/TV technician for help.

To maintain compliance with FCC's RF Exposure guidelines, This equipment should be installed and operated with minimum distance between 20cm the radiator your body: Use only the supplied antenna.

13

WARRANTY

Innovative Technology Electronics Corp.

Limited Warranty: 90 Days Labor, One Year Parts

Innovative Technology Electronics Corp. (IT) warrants the product to be free from "Defects" in materials under normal use for a period of "One Year" from the date of the original purchase. The Warranty is "Not" transferable. If agrees, within the initial "90 Day" period, to repair or replace the product if it is determined to be defective at "No Charge". It is further agreed that IT will cover the cost to repair or replace damaged "Parts" only for a total period of "One Year" from the date of the original purchase. The warranty does not cover cosmetic damage, antennas, AC cords, cabinets, headbands, ear-pads, or damage due to line power surges, connection to improper voltage supply or settings, misuse, mishandling, accident, acts of God or attempted repair by an unauthorized service agent.

To obtain service, the purchaser MUST present an original sales receipt / proof of purchase. Please contact us at www.ithomeproducts.com to request an RMA (Return Material Authorization) number to return products for service or replacement. Returns without an RMA number on the package will be refused and returned to sender. Upon receipt of the returning item and our full inspection (IT) may issue a replacement to customer for the same item or of one that has equivalent value and features. To return an item, supply full name, return address, phone number, item purchased, receipt of purchase and reason for return to obtain RMA number.

All returns must be in the original packaging or reasonable substitute to prevent damage. Customer "Must" include full name, shipping address and telephone number inside of package. No return will be shipped back to a PO Box or APO address.

- Please include your check or money order in the amount of:
- US\$55.00 for items \$10.00 to \$39.99 (Price Paid Per Unit)
- US\$10.00 for items \$40.00 to \$99.99 (Price Paid Per Unit)
- US\$15.00 for items \$100.00 and up (Price Paid Per Unit)
- Shipping fees are non-refundable

to be payable to Innovative Technology Electronics Corp. (for handling and return shipping charges) (IT) will not be responsible for delays or unprocessed claims resulting from a purchaser's failure to provide any / all of the necessary information. Send all inquiries or RMA request via our website www.ithomeproducts.com/support.

Innovative Technology Electronics Corp.

1 Channel Drive, Port Washington, NY 11050

Toll free: 1-877-483-2497

Website for support: www.ithomeproducts.com/support

There are no express warranties except as listed above. REPAIR OR REPLACEMENT AS PROVIDED UNDER THIS WARRANTY IS THE EXCLUSIVE REMEDY OF THE CUSTOMER. (IT) SHALL NOT BE LIABLE FOR ANY INCIDENTAL OR CONSEQUENTIAL DAMAGES FOR BREACH OF ANY EXPRESS OR IMPLIED WARRANTY ON THIS PRODUCT EXCEPT TO THE EXTENT PROHIBITED BY APPLICABLE LAW. ANY IMPLIED WARRANTY OF MERCHANTABILITY OR FITNESS FOR A PARTICULAR PURPOSE ON THIS PRODUCT IS LIMITED IN DURATION TO THE DURATION OF THIS WARRANTY. Some states do not allow the exclusion or limitation of incidental or consequential damages, or limitations on how long an implied warranty lasts, so the above exclusions or limitations may not apply to you. This warranty gives you specific legal rights and you may also have other rights, which vary from state to state.

Made in China.

C150061E

14