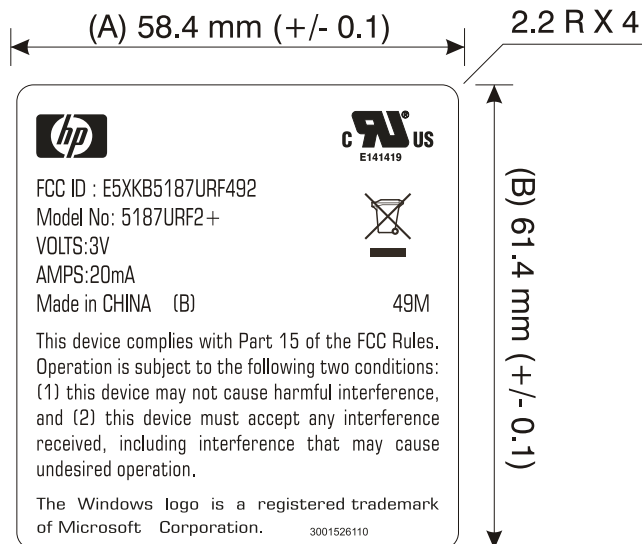


REVISIONS				
ZONE	REV.	DESCRIPTION	DATE	APPROVED

【公差值為 +/- 0.1 mm】



此LABEL爲2色印刷

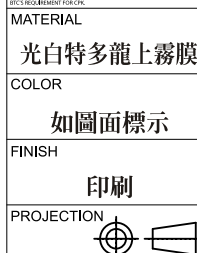
- PANTONE Black C
- BTC No. 1185 (Background)

零部件材料區分表			
✓	零部件		已有零件 (2003/9/30以前)
	副資材	✓	新零部件 (2003/10/1以後)
	材料		
	原材料		指定原材料

禁止使用等級 1 環境管理物質，成型用樹脂、油墨、塗料、被覆線材須符合BTC『產品環境安全物質管制實施細則』，優先從SONY的綠色伙伴認定交易單位採購

TOLERANCE UNLESS OTHERWISE STATED				
ABOVE	UP AND TO	FINE	MEDIUM	COARSE
0.5	3	±0.05	±0.05	±0.15
3	6	±0.05	±0.10	±0.20
6	30	±0.10	±0.15	±0.50
30	120	±0.15	±0.20	±0.80
120	315	±0.20	±0.25	±1.20
315	1000	±0.30	±0.30	±2.00

THE DRAWING IS THE PROPERTY OF BEHAVIOR TECH COMPUTER CORPORATION AND CONTAINS A CONFIDENTIAL PROPRIETARY DESIGN WHICH IS UNREGISTERED. COMPUTER CORP. MAKING ALL PRINTS AND OTHER REPRODUCTIONS WITHOUT THE WRITTEN PERMISSION OF BEHAVIOR TECH COMPUTER CORP. IS STRICTLY PROHIBITED. EXCEPT FOR A SPECIFIC PURPOSE AND THE RELATIONSHIP SHOWN ON THE DRAWING, NO OTHER SUPPLY OR DISCLOSE ANY INFORMATION REGARDING IT TO ANY UNAUTHORIZED PERSON. THE TOLERANCE SHOWN ON THE DRAWING MUST MEET JIS-B 7001 REQUIREMENT FOR CIVIL.



**BTC**® BEHAVIOR TECH COMPUTER CORP.

CONTRACT NO.		BTC 5187URF2+ (TX)	
TITLE		FCC LABEL for HP	
DWG. NO.		3001526110	
DR.	FILE NAME		
CHKD.	SCALE	UNIT	mm
APPD.	SHEET OF	REV.	A