

产品规格承认书

SPECIFICATIONS

CUSTOMER: _____

DESCRIPTION: 蓝牙天线

CUSTOMER P

OUR MODEL NO: PBX2012MA02
~~ART No:~~ _____

DATE: 2020/12/22

Address:Room 605, Building 4, 1970 Science Park, Minzhi Community,
Minzhi Street, Longhua District, Shenzhen

--	--	--	--	--	--

(APPROVED SIGNATURE)			

PBX2012MA02 Specification

Operating Temp. : -40°C~+85°C

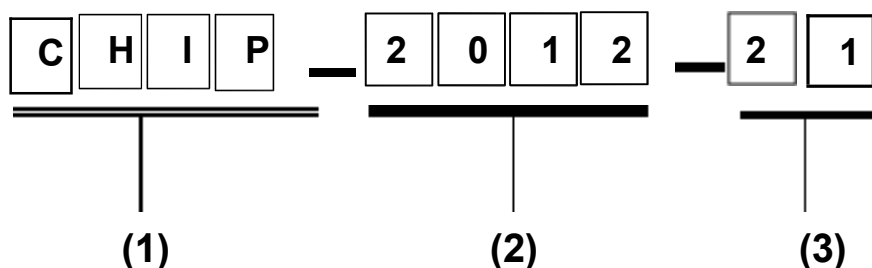
1. FEATURES:

- Light weight, compact
- Wide bandwidth, low cost
- Built-in antenna with high gain

2. APPLICATIONS:

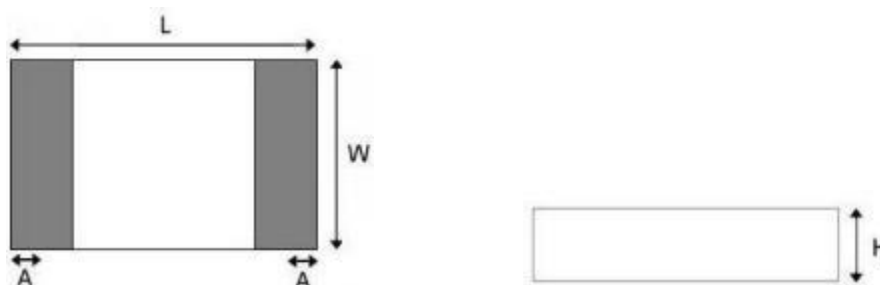
- Bluetooth, Wireless LAN, Mobile TV
- Home RF System, etc

3. PRODUCT IDENTIFICATION




- (1) Product type: Multilayer chip Antenna
(2) External Dimensions (L×W) (mm): 2.0*1.2

4. SHAPE AND DIMENSIONS:



SHAPE AND DIMENSIONS

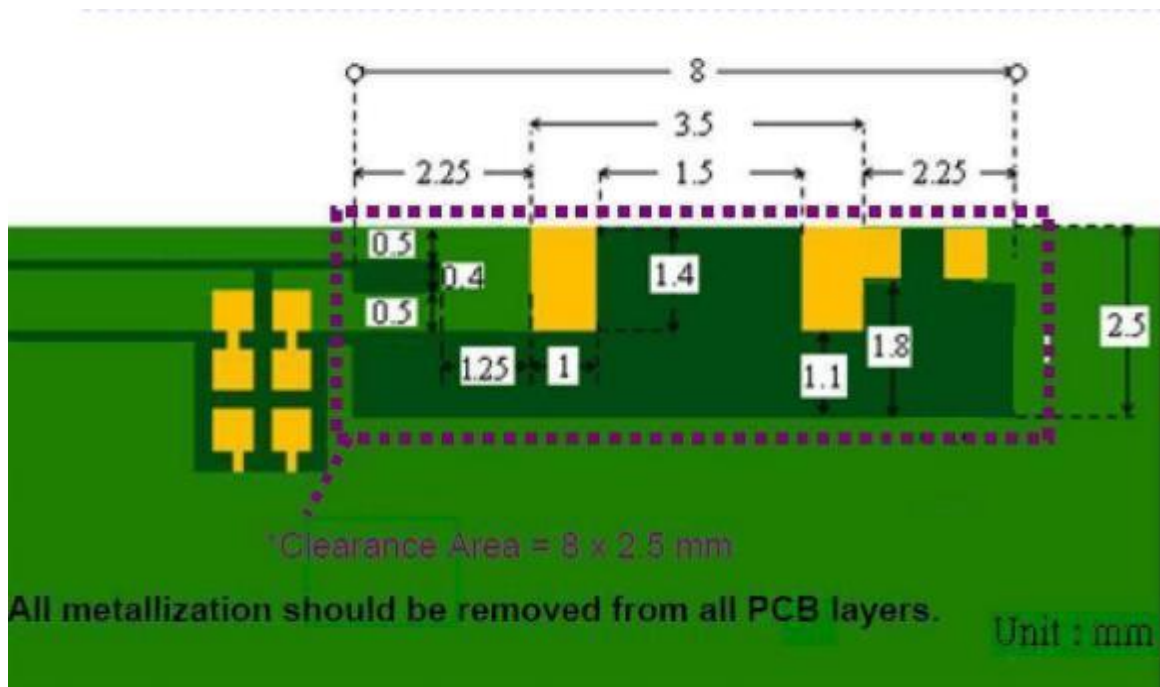
L	W	H	A
2.0±0.2	1.2±0.2	0.55±0.1	0.4±0.1

UNLESS OTHER SPECIFIED TOLERANCES ON: X=± X.X=± X.XX=± A N G L E S = ± H O L E D I A = ±		 Shenzhen Pengbian Industrial Technology Co., LTD	
SCALE: N/A	UNIT: mm	THIS DRAWINGS AND SPECIFICATIONS ARE THE PROPERTY OF PBXY TECHNOLOGY Limited AND SHALL NOT BE REPRODUCED OR USED AS THE BASIS FOR THE MANUFACTURE OR SALE OF APPARATUS OR DEVICES WITHOUT PERMISSION	
DRAWN BY : Sera	CHECKED BY: XD		
DESIGNED BY: Sera	APPROVED BY: XD		
TITLE: CHIP2450-21 Specification		DOCUMENT NO.	SPEC REV.
		2012	P1

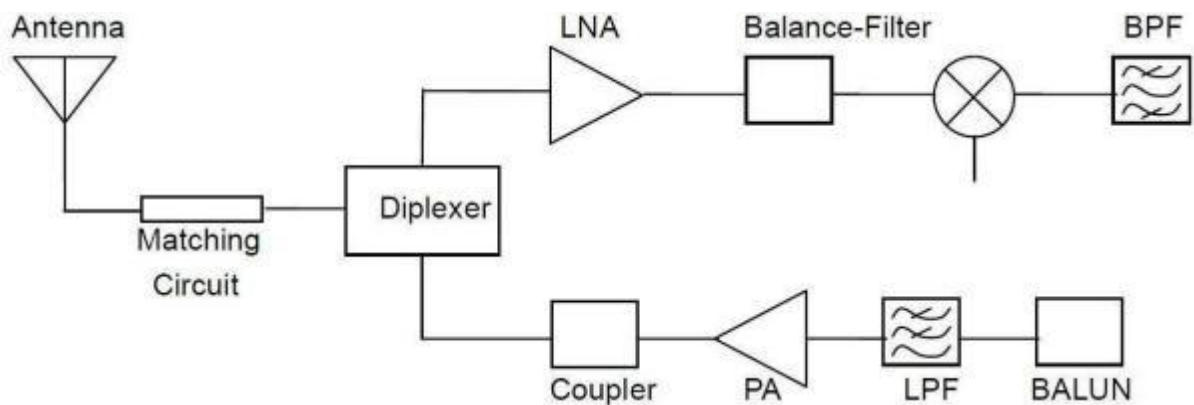
TERMINAL-CONFIGURATION



EVALUATION BOARD



APPLICATION GUIDE



UNLESS OTHER SPECIFIED TOLERANCES ON:

X = ± X.X = ± X.XX = ±
 ANGLES = ± HOLE DIA = ±



Shenzhen Pengbian Industrial Technology Co., LTD

SCALE: N/A

UNIT: mm

DRAWN BY : Sera

CHECKED BY: XD

DESIGNED BY: Sera

APPROVED BY: XD

DOCUMENT
NO.

2012

SPEC REV.

P1

TITLE: CHIP2450-21 Specification

5. SPECIFICATIONS:

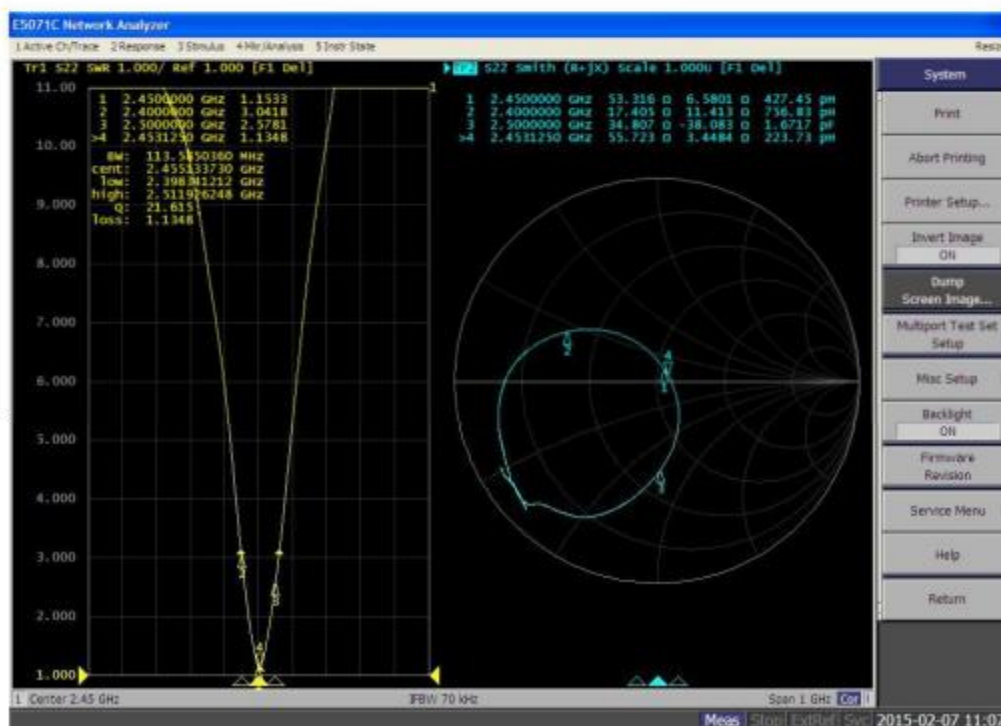
ITEM	SPECIFICATION
Frequency Band	2400MHz~2483MHz
VSWR	Less than 3
Polarization	Linear
*Peak Gain	2.48 dBi Typ.
*Peak Efficiency	72.6% Typ.
Impedance	50 Ω Typ.

* Test condition: Test board size 98*65 mm

Matching circuit: Pi matching circuit will be required

6. Electrical Characteristics :

VSWR



Mark	Frequency	VSWR
1	2400 MHz	3.04
2	2450 MHz	1.15
3	2500 MHz	2.57

UNLESS OTHER SPECIFIED TOLERANCES ON:

X = \pm X.X = \pm X.XX =
 ANGLES = \pm HOLEDIA = \pm



Shenzhen Pengbian Industrial Technology Co., LTD

SCALE: N/A

UNIT: mm

DRAWN BY : Sera

CHECKED BY: XD

DESIGNED BY: Sera

APPROVED BY: XD

THIS DRAWINGS AND SPECIFICATIONS ARE THE PROPERTY OF PBXY TECHNOLOGY Limited AND SHALL NOT BE REPRODUCED OR USED AS THE BASIS FOR THE MANUFACTURE OR SALE OF APPARATUS OR DEVICES WITHOUT PERMISSION

TITLE: CHIP2450-21 Specification

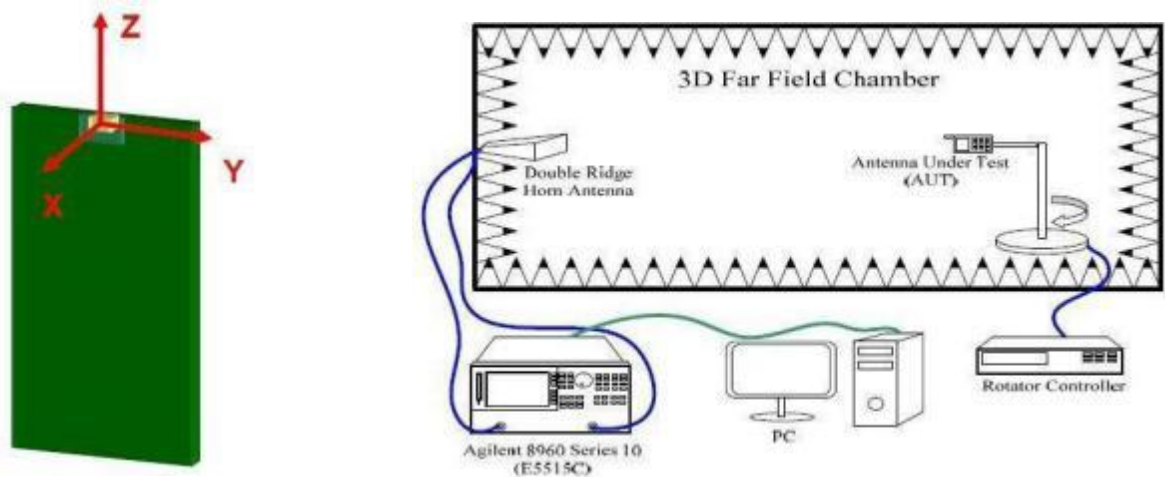
DOCUMENT NO.

2012

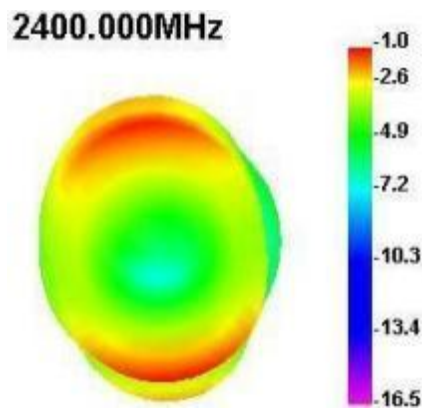
SPEC REV.
P1

Radiation Pattern

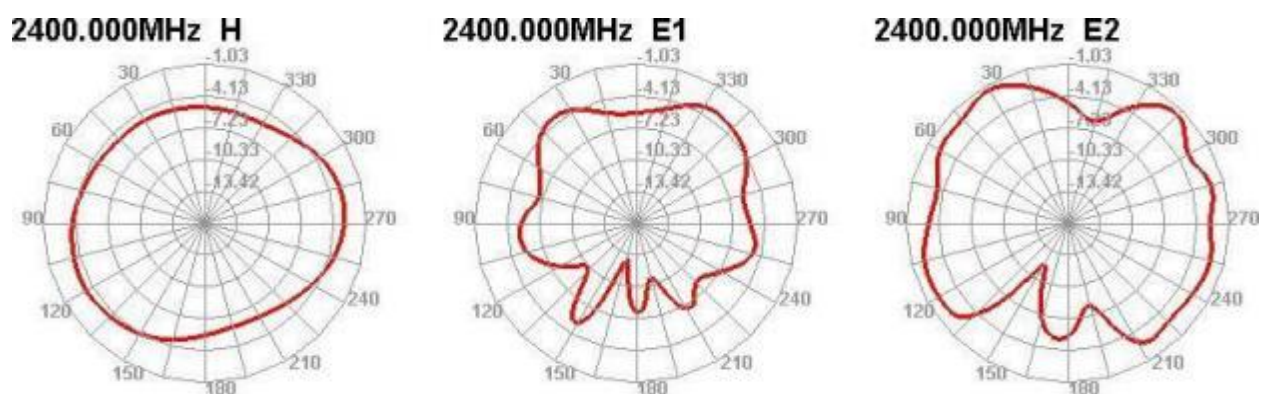
The Gain pattern is measured in INPAQ's FAR-field chamber. DUT is placed on the table of rotator,a standard horn antenna and Vector Network Analyzer is used to collect data.



© 3D Gain Pattern (2400 MHz)



© 2D Gain Pattern (2400 MHz)



UNLESS OTHER SPECIFIED TOLERANCES ON:

X = ± X.X = ± X.XX = ±
A N G L E S = ± H O L E D I A = ±



Shenzhen Pengbian Industrial Technology Co., LTD

SCALE: N/A

UNIT: mm

DRAWN BY : Sera

CHECKED BY: XD

DESIGNED BY: Sera

APPROVED BY: XD

THIS DRAWINGS AND SPECIFICATIONS ARE THE PROPERTY OF PBXY TECHNOLOGY Limited AND SHALL NOT BE REPRODUCED OR USED AS THE BASIS FOR THE MANUFACTURE OR SALE OF APPARATUS OR DEVICES WITHOUT PERMISSION

TITLE: CHIP2450-21 Specification

DOCUMENT
NO.

2012

SPEC REV.

P1