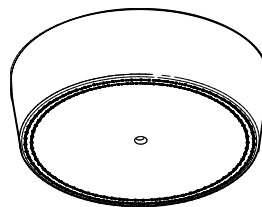


This wireless glassbreak detector is intended for use with Honeywell controls that support SiX™ series devices.

FC: This wireless glassbreak detector is intended for use with Honeywell controls that support SiX™ series devices.

SP: This wireless glassbreak detector is intended for use with Honeywell controls that support SiX™ series devices.

PA: This wireless glassbreak detector is intended for use with Honeywell controls that support SiX™ series devices.



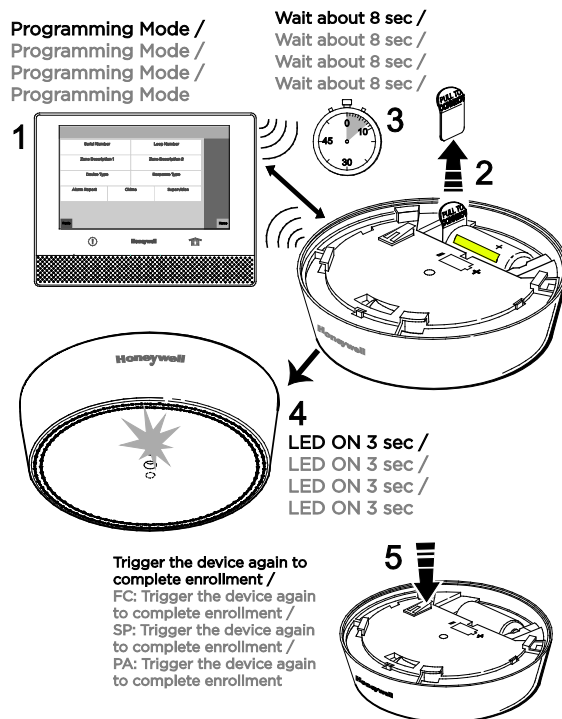
RF6GB

**Note:** Once enrolled in a system, the RF6GB cannot be used with another control panel until it is removed from the current control panel. See the Control's instructions device removal instructions.

**FC: Note:** Once enrolled in a system, the RF6GB cannot be used with another control panel until it is removed from the current control panel. See the Control's instructions for device removal instructions.

**SP: Note:** Once enrolled in a system, the RF6GB cannot be used with another control panel until it is removed from the current control panel. See the Control's instructions for device removal instructions.

**PA: Note:** Once enrolled in a system, the RF6GB cannot be used with another control panel until it is removed from the current control panel. See the Control's instructions for device removal instructions.



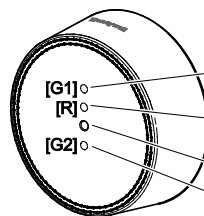
**Enroll / Enroll / Enroll / Enroll**

**LEDs / LEDs / LEDs / LEDs**

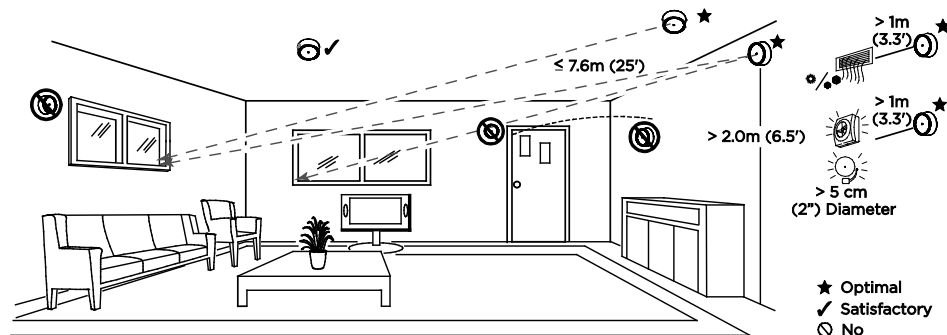
**ON / ON / ON / ON**  
**OFF / OFF / OFF / OFF**

**Rapid Flash / Rapid Flash / Rapid Flash / Rapid Flash**

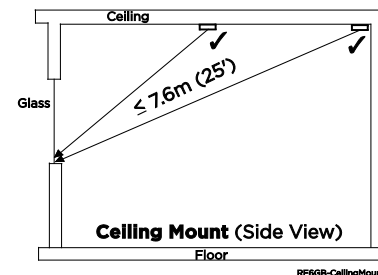
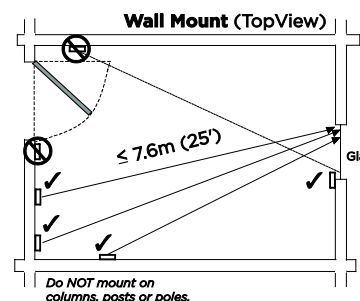
**Slow Flash / Slow Flash / Slow Flash / Slow Flash**



[G1] Enrollment / [Green 1] Enrollment  
[R] Alarms / [Red] Alarms  
[G2] Events / [Green 2] Events



**Mounting Locations / Mounting Locations / Mounting Locations / Mounting Locations**



**Mounting Options / Mounting Options / Mounting Options / Mounting Options**

G1	Red	G2	Status
○	○	☀	Test Mode <sup>1</sup>
○	○	☀	Event detected during Test Mode
○	☀	☀	Alarm detected during Test Mode
○	☀ <sup>2</sup>	☀ <sup>2</sup>	Low Battery detected during Test Mode
☀	○	○	Power Up / Tamper switch pressed / FG-701 Activated before enrollment
☀	○	○	Tamper Detected

<sup>1</sup> Test Mode is 10 minutes. / Test Mode is 10 minutes / Test Mode is 10 minutes / Test Mode is 10 minutes

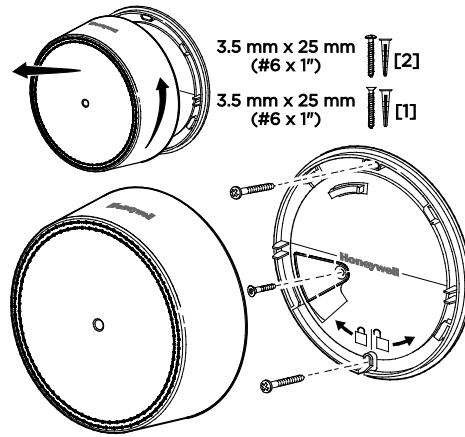
<sup>2</sup> The LEDs are not visible during Normal Mode / The LEDs are not visible during Normal Mode / The LEDs are not visible during Normal Mode / The LEDs are not visible during Normal Mode

**Note:** After enrolling and before mounting permanently, conduct Go/No Go tests (see control's instructions) to verify adequate signal strength. Adjust the device location and orientation as necessary.

**FC: Note:** After enrolling and before mounting permanently, conduct Go/No Go tests (see control's instructions) to verify adequate signal strength. Adjust the device location and orientation as necessary.

**SP: Note:** After enrolling and before mounting permanently, conduct Go/No Go tests (see control's instructions) to verify adequate signal strength. Adjust the device location and orientation as necessary.

**PA: Note:** After enrolling and before mounting permanently, conduct Go/No Go tests (see control's instructions) to verify adequate signal strength. Adjust the device location and orientation as necessary.



Mount / Mount / Mount / Mount

Consult the Control's instructions to program the RF6GB Services: Tamper Switches, Sensitivity Setting and Temperature Sensing

**FC:** Consult the Control's instructions to program the RF6GB Services: Tamper Switches, Sensitivity Setting and Temperature Sensing.

**SP:** Consult the Control's instructions to program the RF6GB Services: Tamper Switches, Sensitivity Setting and Temperature Sensing.

**PA:** Consult the Control's instructions to program the RF6GB Services: Tamper Switches, Sensitivity Setting and Temperature Sensing.

Sensitivity Setting	Approximate Range
High *	4.6-7.6m / 15-25 ft.
Medium	3-4.6m / 10-15 ft.
Low	1.5-3m / 5-10 ft.
Lowest	0-1.5m / 0-5 ft.

\* Factory default / Valeurs par défaut du fabricant / Defecto de fábrica / Padrão de fábrica

Program / Program /  
Program / Program

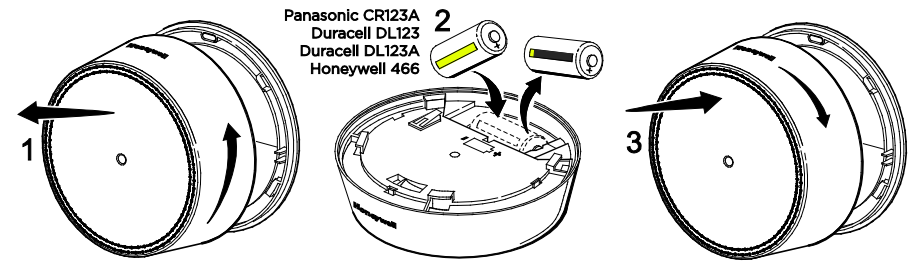
#### Approval Listings:

FCC / IC  
UL639  
ULC S306-03  
RoHS

#### Specifications:

**Range:** 0'- 25' / 0 - 7.6m; Selectable  
**RF Frequency:** 2.4GHz  
**Battery:** 1 x 3V, Lithium; Panasonic CR123A, Duracell DL 123, Duracell DL 123A, Honeywell 466  
**Tamper:** Cover and Wall  
**Operating Temperature:** 32° - 122° F / 0° - 50° C  
**Relative Humidity:** 5 - 95%, non-condensing  
**Dimensions:** 3.78" Diameter x 1.14" Thick / 96 mm Diameter x 29mm Thick

Product must be tested at least once each year / Le fonctionnement du produit doit être vérifié au moins une fois par année / El producto debe ser probado al menos una vez al año / O produto deve ser testado pelo menos uma vez por ano



Replace Battery / Replace Battery /  
Replace Battery / Replace Battery

**BATTERY CAUTION:** Risk of fire, explosion and burns. Do not recharge, disassemble, heat above 212° F (100° C) or incinerate. Dispose of used batteries promptly. Keep away from children.

**FC: BATTERY CAUTION:** Risk of fire, explosion and burns. Do not recharge, disassemble, heat above 212° F (100° C) or incinerate. Dispose of used batteries promptly. Keep away from children.

**SP: BATTERY CAUTION:** Risk of fire, explosion and burns. Do not recharge, disassemble, heat above 212° F (100° C) or incinerate. Dispose of used batteries promptly. Keep away from children.

**PA: BATTERY CAUTION:** Risk of fire, explosion and burns. Do not recharge, disassemble, heat above 212° F (100° C) or incinerate. Dispose of used batteries promptly. Keep away from children.

#### Support / Support / Support / Support

<http://www.security.honeywell.com/hsc/resources/MyWebTech/>

#### U.S. warranty / U.S. warranty / U.S. garantie / U.S. garantia

[www.honeywell.com/security/hsc/resources/wa](http://www.honeywell.com/security/hsc/resources/wa)



MyWebTech



Warranty

#### FEDERAL COMMUNICATIONS COMMISSION & INDUSTRY CANADA STATEMENTS

The user shall not make any changes or modifications to the equipment unless authorized by the Installation Instructions or User's Manual. Unauthorized changes or modifications could void the user's authority to operate the equipment.

#### FCC / IC STATEMENT

This device complies with Part 15 of the FCC Rules, and RSS-210 of Industry Canada. Operation is subject to the following two conditions: (1) This device may not cause harmful interference, and (2) This device must accept any interference received, including interference that may cause undesired operation.

Cet appareil est conforme à la partie 15 des règles de la FCC & de RSS-210 des Industries Canada. Son fonctionnement est soumis aux conditions suivantes: (1) Cet appareil ne doit pas causer d'interférences nuisibles. (2) Cet appareil doit accepter toute interférence reçue y compris les interférences causant une réception indésirable.

#### RF Exposure

**Warning** - The antenna(s) used for this device must be installed to provide a separation distance of at least 7.8 inches (20 cm) from all persons and must not be co-located or operating in conjunction with any other antenna or transmitter except in accordance with FCC multi-transmitter product procedures.

#### Mise en Garde

**Exposition aux Fréquences Radio:** L'antenne (s) utilisée pour cet émetteur doit être installée à une distance de séparation d'au moins 7,8 pouces (20 cm) de toutes les personnes.

REFER TO THE INSTALLATION INSTRUCTIONS FOR THE CONTROL WITH WHICH THIS DEVICE IS USED, FOR DETAILS REGARDING LIMITATIONS OF THE ENTIRE ALARM SYSTEM.

