

尺寸：105x148.5mm 材质：超感米100g 折页方式：骑马钉

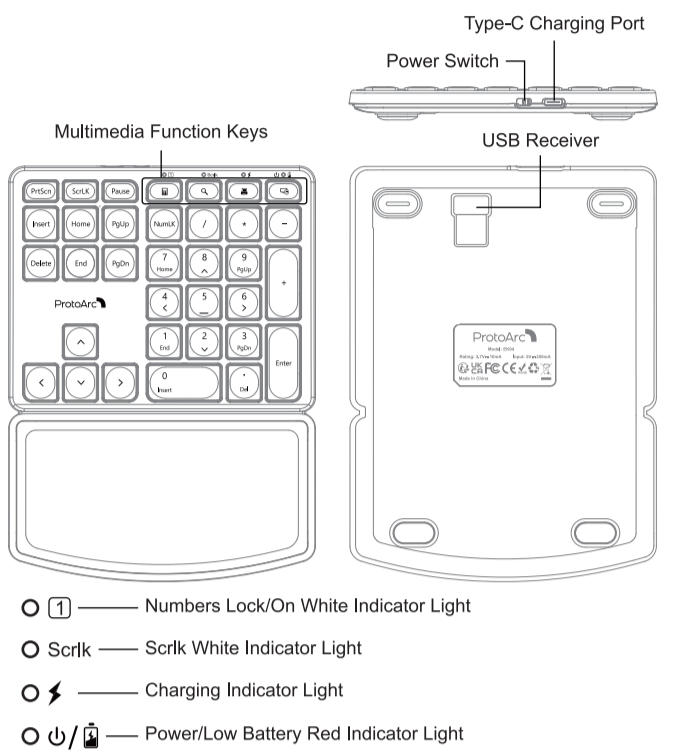
英语

User Manual

Wireless Keyboard

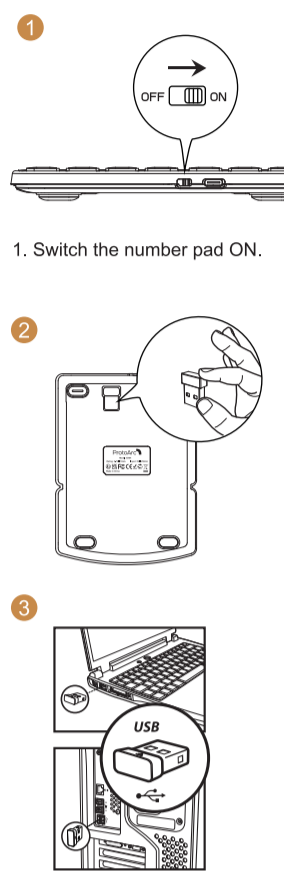
HW390

Product Features



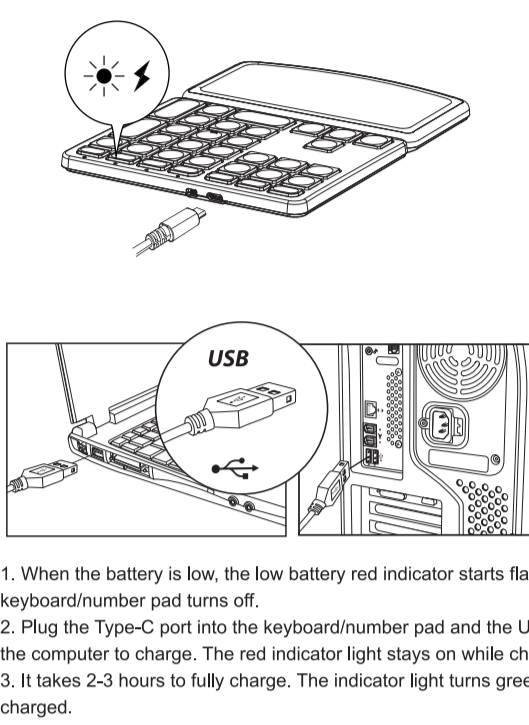
- 1 -

2.4G USB Connection



- 2 -

Charging Guide



- 3 -

Numeric Keypad:

System Compatibility	Windows 7-11
Battery Capacity	280mAh
Working Voltage	3.7V
Working Current	≤2mA
Standby Current	≤1mA
Standby Current	≤0.3mA
Standby Time	≥365 Days
Working Time	180 Hours
Charging Time	42 Hours
Wake up Way	Press any key
Numeric Keypad Dimension	209*92*16mm

Numeric Keypad Multimedia Functions

Calculator	Search
Print	Lock Screen

- 4 -

NOTE:

This equipment has been tested and found to comply with the limits for a Class B digital device, pursuant to part 15 of the FCC Rules. These limits are designed to provide reasonable protection against harmful interference in a residential installation. This equipment generates, uses and can radiate radio frequency energy and, if not installed and used in accordance with the instructions, may cause harmful interference to radio communications. However, there is no guarantee that interference will not occur in a particular installation. If this equipment does cause harmful interference to radio or television reception, which can be determined by turning the equipment off and on, the user is encouraged to try to correct the interference by one or more of the following measures:

- Reorient or relocate the receiving antenna.
- Increase the separation between the equipment and receiver.
- Connect the equipment into an outlet on a circuit different from that to which the receiver is connected.
- Consult the dealer or an experienced radio/TV technician for help.

Changes or modifications not expressly approved by the party responsible for compliance could void the user's authority to operate the equipment.

The device complies with Part 15 of the FCC Rules. Operation is subject to the following two conditions:
(1) The device may not cause harmful interference, and
(2) The device must accept any interference received, including interference that may cause undesired operation.

- 5 -