

Test Report No.8212306905 Rev1.

For Alvarion (formerly Breezecom & Floware) Ltd.

***Equipment Under Test:
One Box 2.4 GHz Radio (BreezeNet)***

***Model: AP-10, AP-10D;
SA-10, SA-10D;
WB-10, WB-10D;
SA-40, SA-40D***

***From The Standards Institution
Of Israel
Industry Division
Telematics Laboratory
EMC Section***



Certificate No.1487-01

Test Report No.: 8212306905 Rev1.

Page 1 of 34 Pages

Title: Test on One Box 2.4 GHz Radio (BreezeNet)

Model: AP-10, AP-10D; SA-10, SA-10D; WB-10, WB-10D; SA-40, SA-40D

Order placed by: Alvarion (formerly Breezecom & Floware) Ltd.

Address: P.O. Box 13139 Tel Aviv 61131 Israel

Sample for test selected by: The orderer

The date of test: 09/04/2002.

Description of Equipment

Under Test (EUT): One Box 2.4 GHz Radio (BreezeNet)

Model: AP-10, AP-10D; SA-10, SA-10D; WB-10, WB-10D; SA-40, SA-40D

Manufactured by: Alvarion (formerly Breezecom & Floware) Ltd.

Reference Documents:

- ❖ CFR 47 FCC: "Rules and Regulations";
Part 15. "Radio frequency devices";
Subpart C: "Intentional radiators"

Test Results: The EUT was found to be in compliance with the requirements of:
FCC Rules Part 15 Subpart C Sec.15.205, 15.207, 15.209, 15.247 (c).

This Test Report contains 34 pages
and may be used only in full.

This Test Report applies only to the specimen tested and may not
be applied to other specimens of the same product.

Test Report No.: 8212306905 Rev1.

Page 2 of 34 Pages

Title: Test on One Box 2.4 GHz Radio (BreezeNet)

Model: AP-10, AP-10D; SA-10, SA-10D; WB-10, WB-10D; SA-40, SA-40D

Table of Contents

1. EUT Description and operation	3
1.1 General description:	3
1.2 Scope:	5
2. Test specification, Methods and Procedures	5
3. Measurements, examinations and derived results	5
3.1 Location of the Test Site:	5
3.2 Test condition:	5
3.3 Conducted emission test:	6
3.4 Radiated emission test:	12
3.5 RF Power:	20
4. Compliance with specification	27
5. Appendix 1: Test equipment used	28
6. Appendix 2: Antenna Factor and Cable Loss	29
7. Appendix 3: Test configuration illustration	30

Test Report No.: 8212306905 Rev1.

Page 3 of 34 Pages

Title: Test on One Box 2.4 GHz Radio (BreezeNet)

Model: AP-10, AP-10D; SA-10, SA-10D; WB-10, WB-10D; SA-40, SA-40D

1 General

1.1 EUT general description:

Description of Equipment Under Test (EUT): One Box 2.4 GHz Radio (BreezeNet)

Model: AP-10, AP-10D; SA-10, SA-10D; WB-10, WB-10D; SA-40, SA-40D

Manufactured by: Alvarion (formerly Breezecom & Floware) Ltd.

The EUT is a spread spectrum transmitter operating within the frequency band 2400 – 2483 MHz. The EUT comes in 8 software versions.

The EUT brief specification:

RF power 22 dBm

Antenna used 2400 – 2700 MHz

TYP 11 dBi mfr Smartant service@smartant.com

S/N 2B100012 P/N ALA-05001

The EUT internal view is shown in Figure 1.

1.2 Scope:

This test report contains results of the tests, performed on One Box 2.4 GHz Radio (BreezeNet) according to the following requirements of CFR 47 FCC Part 15 Subpart C:

1. Conducted emission measurements per Sec. 15.207;
2. Spurious emission measurements up to 10th harmonic for low, middle and high channels per C Sec.15.209;
3. Radiated emission measurements in restricted bands 2310-2390 MHz and 2483.5-2500 MHz, per Sec.15.205, 15.35.
4. Spurious Emission, Antenna conducted per Sec.15.247 (c).
5. RF power measurements per Sec.15.247 (c).

Test Report No.: 8212306905 Rev1.

Page 4 of 34 Pages

Title: Test on One Box 2.4 GHz Radio (BreezeNet)

Model: AP-10, AP-10D; SA-10, SA-10D; WB-10, WB-10D; SA-40, SA-40D

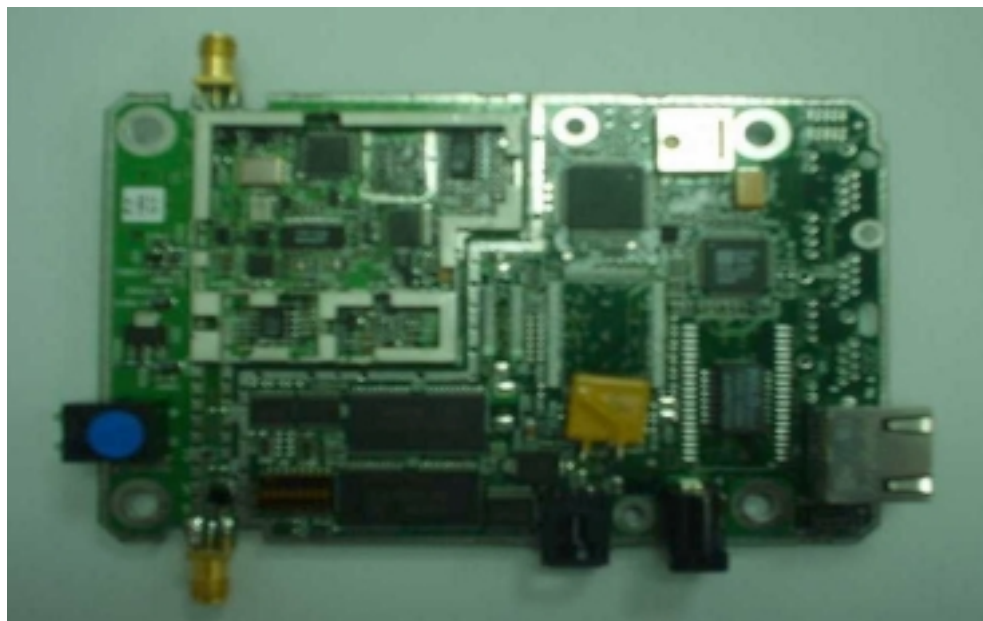
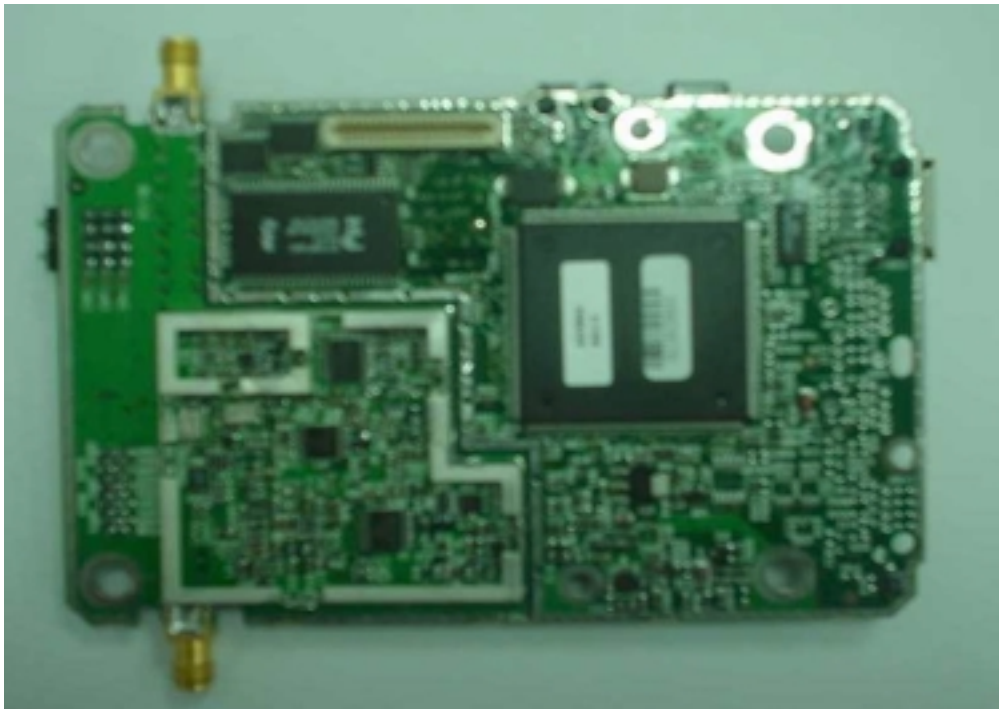


Figure 1 EUT internal view (component side & printed side)

Test Report No.: 8212306905 Rev1.

Page 5 of 34 Pages

Title: Test on One Box 2.4 GHz Radio (BreezeNet)

Model: AP-10, AP-10D; SA-10, SA-10D; WB-10, WB-10D; SA-40, SA-40D

2 Test specification, Methods and Procedures

Test Specification:

- ❖ CFR 47 FCC: "Rules and Regulations";
Part 15. "Radio frequency devices";
Subpart C: "Intentional radiators".

Methods and Procedures:

- ❖ ANSI C63/4/1992: "American National Standard for Methods of Measurement of Radio-Noise Emissions from Low-Voltage Electrical and Electronic Equipment in the range of 9 kHz to 40 GHz".

3 Measurements, examinations and derived results

3.1 *Location of the Test Site:*

EMC laboratory of the Standards Institution of Israel in Tel-Aviv.

3.2 *Test condition:*

Temperature: 22 °C

Humidity: 60 %

Test Report No.: 8212306905 Rev1.

Page 6 of 34 Pages

Title: Test on One Box 2.4 GHz Radio (BreezeNet)

Model: AP-10, AP-10D; SA-10, SA-10D; WB-10, WB-10D; SA-40, SA-40D

3.3 Conducted emission test:

3.3.1 Requirements:

EUTs conducted emission within the band 450 kHz to 30 MHz shall not exceed value required in section 15.207.

3.3.2 Test configuration:

The measurements were performed on the mains input of the EUT power adapter.

The EUT was placed on a non-metallic table in a shielded chamber at a height of 80 cm from the floor of the shielded chamber and 40 cm from the wall of the shielded chamber.

3.3.3 Test procedure:

The EUT was operated to transmitting through the customer software.
First, initial scans were performed. Final measurements were performed at the frequencies where emission exceeded the tolerance limit.

Test equipment (EMI receiver) setup was as follow:

Initial scan:

Detector type	Peak
Mode	Max hold
Bandwidth	9 kHz
Step size	Continuous sweep
Sweep time	>100 msec

Measurements

Detector type	Quasi-peak, Avg (CISPR)
Bandwidth	9 kHz
Measurement time	200 seconds/MHz
Observation	>15 seconds

3.3.4 Test results:

The conducted emissions from the EUT were found below specified limit. Test results are shown in Table 1 and Plots #1 - #4.

Test Report No.: 8212306905 Rev1.

Page 7 of 34 Pages

Title: Test on One Box 2.4 GHz Radio (BreezeNet)

Model: AP-10, AP-10D; SA-10, SA-10D; WB-10, WB-10D; SA-40, SA-40D

Table 1. Conducted emission test results
EUT: One Box 2.4 GHz Radio

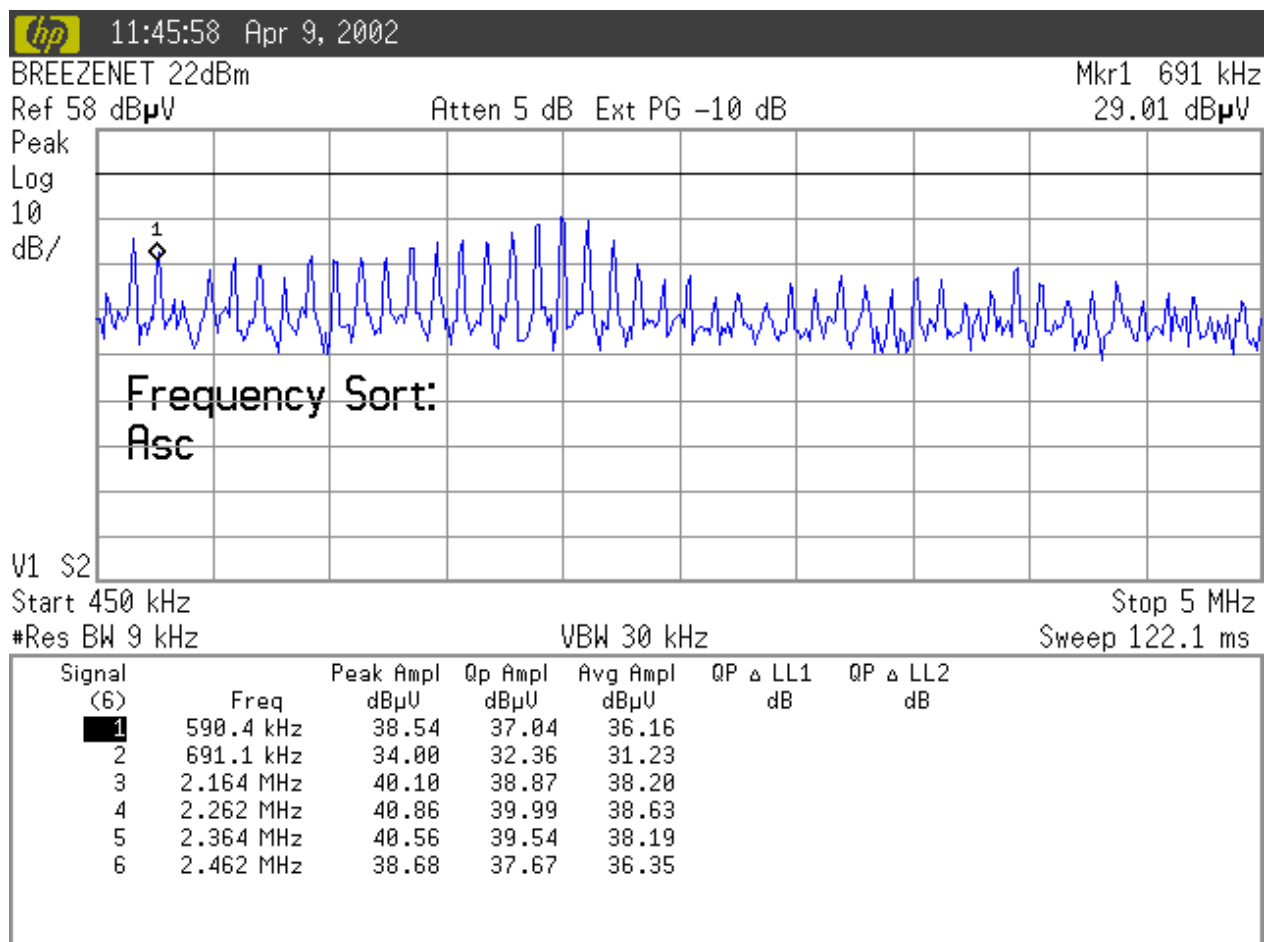
Frequency (MHz)	Tested line	Detector type	Emissions (dBμV)	Limit (dBμV)	Margin (dB)	Results
0.59	Phase	Peak	38.54	-		Complies
		QP	37.04	48	11.0	
		AVG	36.16	-		
0.691	Phase	Peak	34.0	-		Complies
		QP	32.36	48	15.6	
		AVG	31.23	-		
2.164	Phase	Peak	40.1	-		Complies
		QP	38.87	48	9.1	
		AVG	38.2	-		
2.262	Phase	Peak	40.86	-		Complies
		QP	39.99	48	8.0	
		AVG	38.63	-		
2.364	Phase	Peak	40.56	-		Complies
		QP	39.54	48	8.5	
		AVG	38.19	-		
2.462	Phase	Peak	38.68	-		Complies
		QP	37.67	48	10.3	
		AVG	36.35	-		
0.994	Neutral	Peak	27.7	-		Complies
		QP	23.17	48	24.8	
		AVG	20.2	-		
1.88	Neutral	Peak	38.01	-		Complies
		QP	35.85	48	12.2	
		AVG	31.45	-		
2.175	Neutral	Peak	41.51	-		Complies
		QP	39.32	48	8.7	
		AVG	36.2	-		
2.269	Neutral	Peak	41.09	-		Complies
		QP	40.21	48	7.8	
		AVG	39.14	-		
2.369	Neutral	Peak	41.1	-		Complies
		QP	40.01	48	8.0	
		AVG	39.15	-		
2.468	Neutral	Peak	39.64	-		Complies
		QP	37.5	48	10.5	
		AVG	31.72	-		

Test Report No.: 8212306905 Rev1.

Page 8 of 34 Pages

Title: Test on One Box 2.4 GHz Radio (BreezeNet)

Model: AP-10, AP-10D; SA-10, SA-10D; WB-10, WB-10D; SA-40, SA-40D



Plot 1. Conducted emissions measurement result

Reference standard: FCC Part 15 Subpart C sec.15.207

Frequency range: 450 kHz-5 MHz

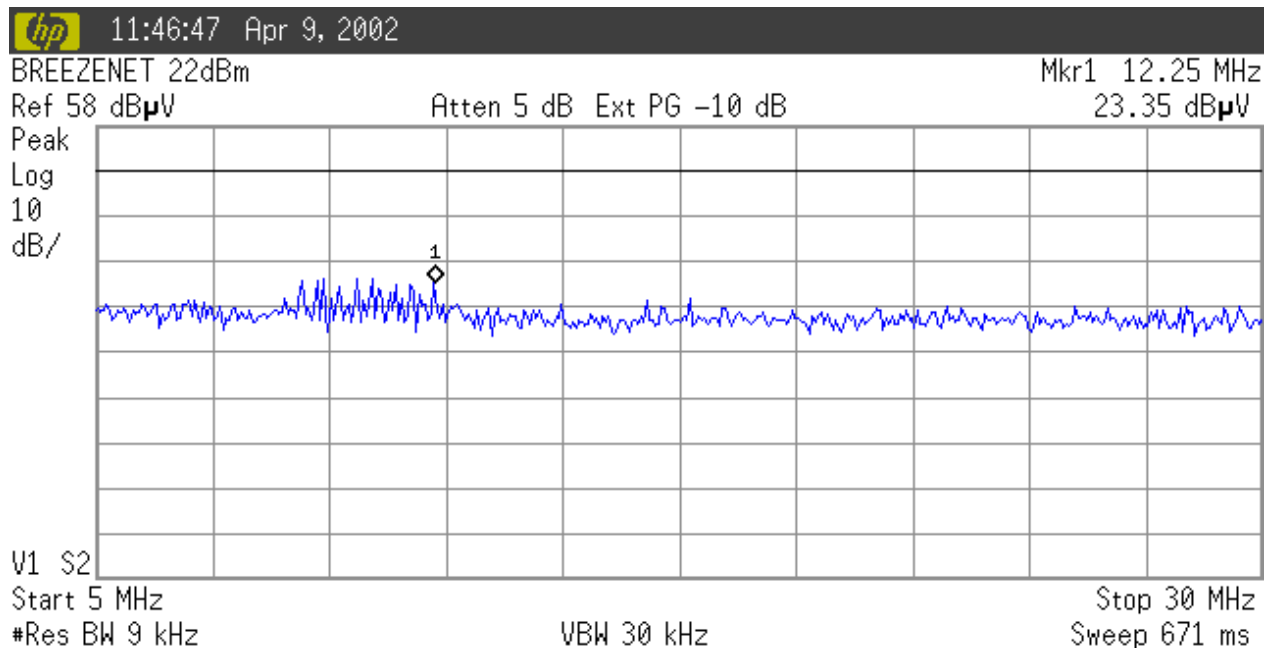
line: phase

Test Report No.: 8212306905 Rev1.

Page 9 of 34 Pages

Title: Test on One Box 2.4 GHz Radio (BreezeNet)

Model: AP-10, AP-10D; SA-10, SA-10D; WB-10, WB-10D; SA-40, SA-40D



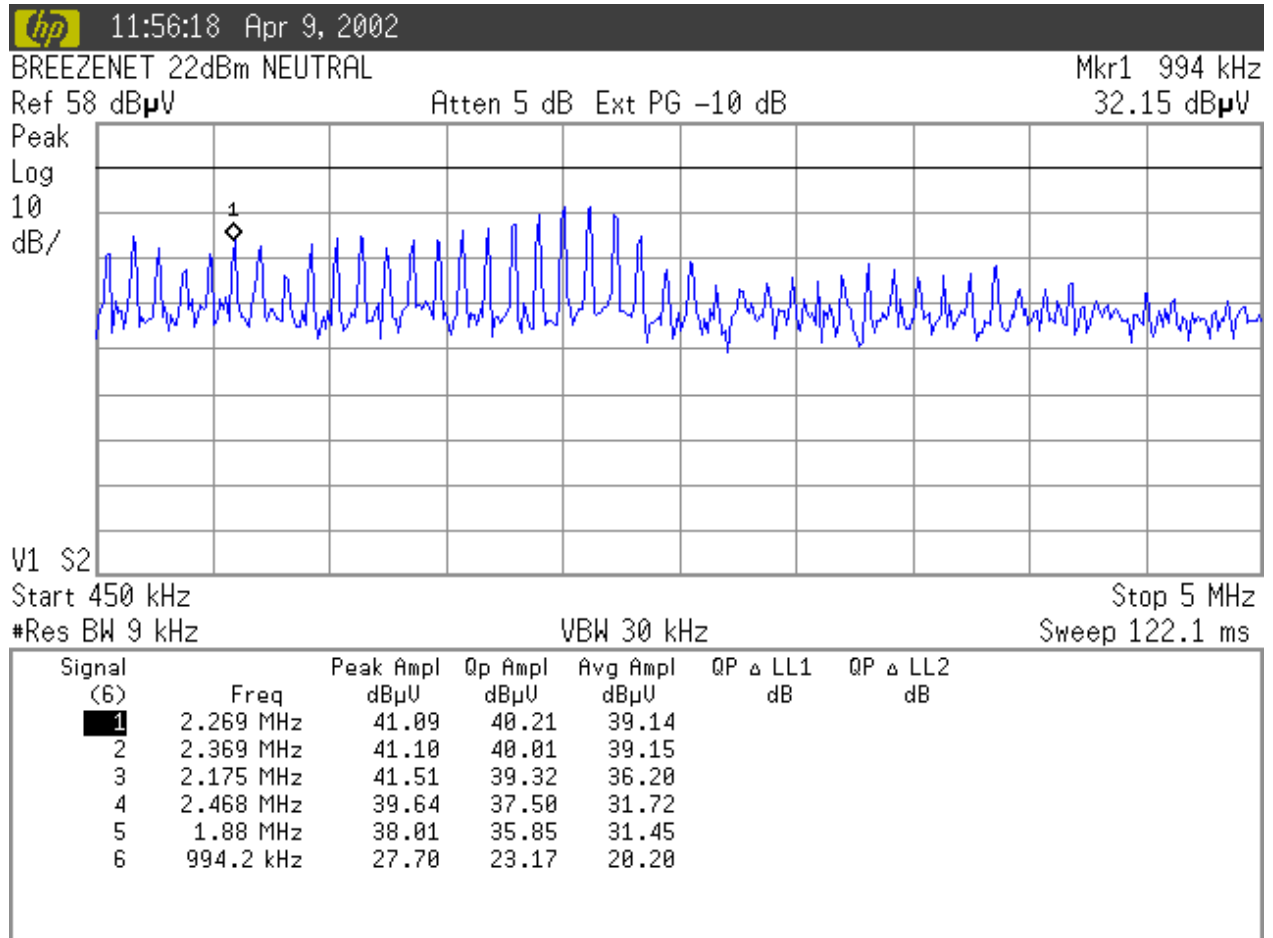
Plot 2. Conducted emissions measurement result
Reference standard: FCC Part 15 Subpart C sec.15.207
Frequency range: 5-30 MHz
line: phase

Test Report No.: 8212306905 Rev1.

Page 10 of 34 Pages

Title: Test on One Box 2.4 GHz Radio (BreezeNet)

Model: AP-10, AP-10D; SA-10, SA-10D; WB-10, WB-10D; SA-40, SA-40D



Plot 3. Conducted emissions measurement result

Reference standard: FCC Part 15 Subpart C sec.15.207

Frequency range: 450 kHz-5 MHz

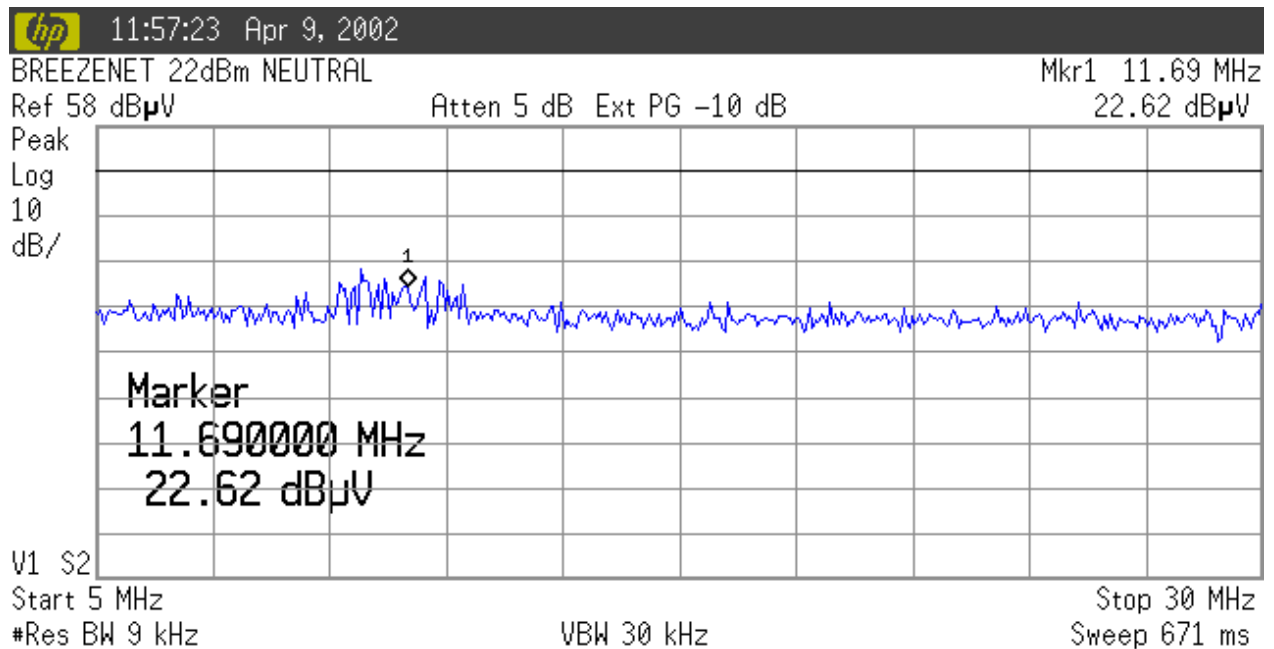
line: neutral

Test Report No.: 8212306905 Rev1.

Page 11 of 34 Pages

Title: Test on One Box 2.4 GHz Radio (BreezeNet)

Model: AP-10, AP-10D; SA-10, SA-10D; WB-10, WB-10D; SA-40, SA-40D



Plot 4

Conducted emissions measurement result

Reference standard: FCC Part 15 Subpart C sec.15.207

Frequency range: 5-30 MHz

line: neutral

Test Report No.: 8212306905 Rev1.

Page 12 of 34 Pages

Title: Test on One Box 2.4 GHz Radio (BreezeNet)

Model: AP-10, AP-10D; SA-10, SA-10D; WB-10, WB-10D; SA-40, SA-40D

3.4 Radiated emission test:

3.4.1 Requirements:

EUTs radiated emission shall not exceed value required in sections 15.209.

3.4.2 Test procedure:

The measurements were performed in the anechoic Chamber.
The EUT was arranged on a non-metallic table 0.8 m placed on the turntable.
Measuring antenna used: Double Ridge, height 1 m.
Measurement distance – 1m

Measuring detector function and bandwidths:

Detector type	Peak
Resolution bandwidth	1MHz
Video bandwidth	1 MHz
Detector type	Average
Resolution bandwidth	1MHz
Video bandwidth	3 kHz*

The frequency range was investigated up to 24820 MHz. Results above 18GHz are not calibrated. No harmonics above 18GHz were detected.

3.4.3 Radiated emission test results:

The test results of spurious emissions are shown in table #1 to #3 .
The test results of emissions in restricted bands are shown in Plots #5 to #8.

Note : The measurements in were performed at 1 m distance instead of 3 m, thus the restricted bands specified limit line of 54 dB μ V/m (for Average detector) and 74 dB μ V/m (for Peak detector) were raised to 10 dB.

Test Report No.: 8212306905 Rev1.

Page 13 of 34 Pages

Title: Test on One Box 2.4 GHz Radio (BreezeNet)

Model: AP-10, AP-10D; SA-10, SA-10D; WB-10, WB-10D; SA-40, SA-40D

Table 1. Spurious emissions test results

Tested unit: One Box 2.4 GHz Radio

Frequency: Low operating frequency 2402 MHz

Frequency (MHz)	Emission Level (dBμV/m)		Limit @ 3m (dBμV/m)		Margin (dB)		Results
	Average	Peak	Average	Peak	Average	Peak	
4804	44.6	45.6	54	74	9.4	28.4	Complies
7206	50.9	54.3			3.1	19.7	Complies
9608	37.2	49.5			16.8	24.5	Complies
12010	42.3	50.8			11.7	23.2	Complies
14412	48.5	55			5.5	19	Complies
16814	48.8	55.5			5.2	18.5	Complies
19216	46.7	52.3			7.3	21.7	Informative
21618	48.4	55.4			5.6	18.6	Informative
24020	50.2	55.7			3.8	18.3	Informative

Note : Emission level = E Reading (dBμV) + measuring cable loss (dB) + measuring antenna factor (dB/m) + Distance correction factor
 For measuring cable loss and measuring antenna factor refer to Appendix 2.
 Distance correction factor = -9.5 dB (correction to extrapolation reading from 1 m to 3m specified distance)

Test Report No.: 8212306905 Rev1.

Page 14 of 34 Pages

Title: Test on One Box 2.4 GHz Radio (BreezeNet)

Model: AP-10, AP-10D; SA-10, SA-10D; WB-10, WB-10D; SA-40, SA-40D

Table 2. Spurious emissions test results

Tested unit: One Box 2.4 GHz Radio
Frequency: Middle operating frequency 2441 MHz

Frequency (MHz)	Emission Level (dB μ V/m)		Limit @ 3m (dB μ V/m)		Margin (dB)		Results
	Average	Peak	Average	Peak	Average	Peak	
4882	49.8	50.9	54	74	4.2	23.1	Complies
7323	54	56.9			0	17.1	Complies
9764	47.1	50.7			6.9	23.3	Complies
12205	42	52.8			12	21.2	Complies
14646	48.6	55.4			5.4	18.6	Complies
17087	49.5	57.5			4.5	16.5	Complies
19528	47.3	55.1			6.7	18.9	Informative
21969	49.7	56			4.3	18	Informative
24410	51	58.7			3	15.3	Informative

Note : Emission level = E Reading (dB μ V) + measuring cable loss (dB) + measuring antenna factor (dB/m) + Distance correction factor
 For measuring cable loss and measuring antenna factor refer to Appendix 2.
 Distance correction factor = -9.5 dB (correction to extrapolation reading from 1 m to 3m specified distance)

Test Report No.: 8212306905 Rev1.

Page 15 of 34 Pages

Title: Test on One Box 2.4 GHz Radio (BreezeNet)

Model: AP-10, AP-10D; SA-10, SA-10D; WB-10, WB-10D; SA-40, SA-40D

Table 3. Spurious emissions test results

Tested unit: One Box 2.4 GHz Radio

Frequency: High operating frequency 2482 MHz

Frequency (MHz)	Emission Level (dB μ V/m)		Limit @ 3m (dB μ V/m)		Margin (dB)		Results
	Average	Peak	Average	Peak	Average	Peak	
4964	52.8	54	54	74	1.2	20	Complies
7446	51.9	53.8			2.1	20.2	Complies
9928	42.1	49.2			11.9	24.8	Complies
12410	42	52.8			12	21.2	Complies
14892	48.6	55.4			5.4	18.6	Complies
17374	49.5	57.5			4.5	16.5	Complies
19856	47.3	55.1			6.7	18.9	Informative
22338	49.7	56			4.3	18	Informative
24820	51	58.7			3	15.3	Informative

Note : Emission level = E Reading (dB μ V) + measuring cable loss (dB) + measuring antenna factor (dB/m) + Distance correction factor
 For measuring cable loss and measuring antenna factor refer to Appendix 2.
 Distance correction factor = -9.5 dB (correction to extrapolation reading from 1 m to 3m specified distance)

Test Report No.: 8212306905 Rev1.

Page 16 of 34 Pages

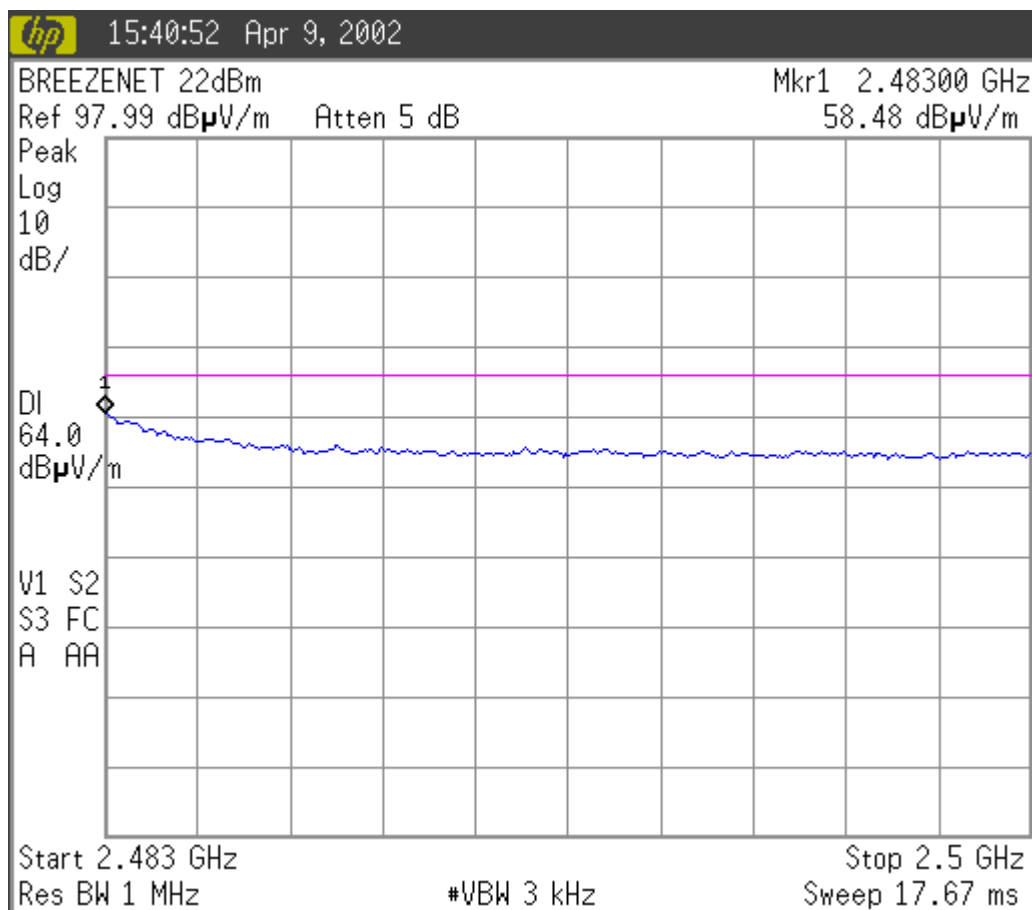
Title: Test on One Box 2.4 GHz Radio (BreezeNet)

Model: AP-10, AP-10D; SA-10, SA-10D; WB-10, WB-10D; SA-40, SA-40D

Plot # 5

Radiated emissions measured in restricted band 2483.5 –2500 MHz
at High operating frequency 2482 MHz

Detector used: Average



Test Report No.: 8212306905 Rev1.

Page 17 of 34 Pages

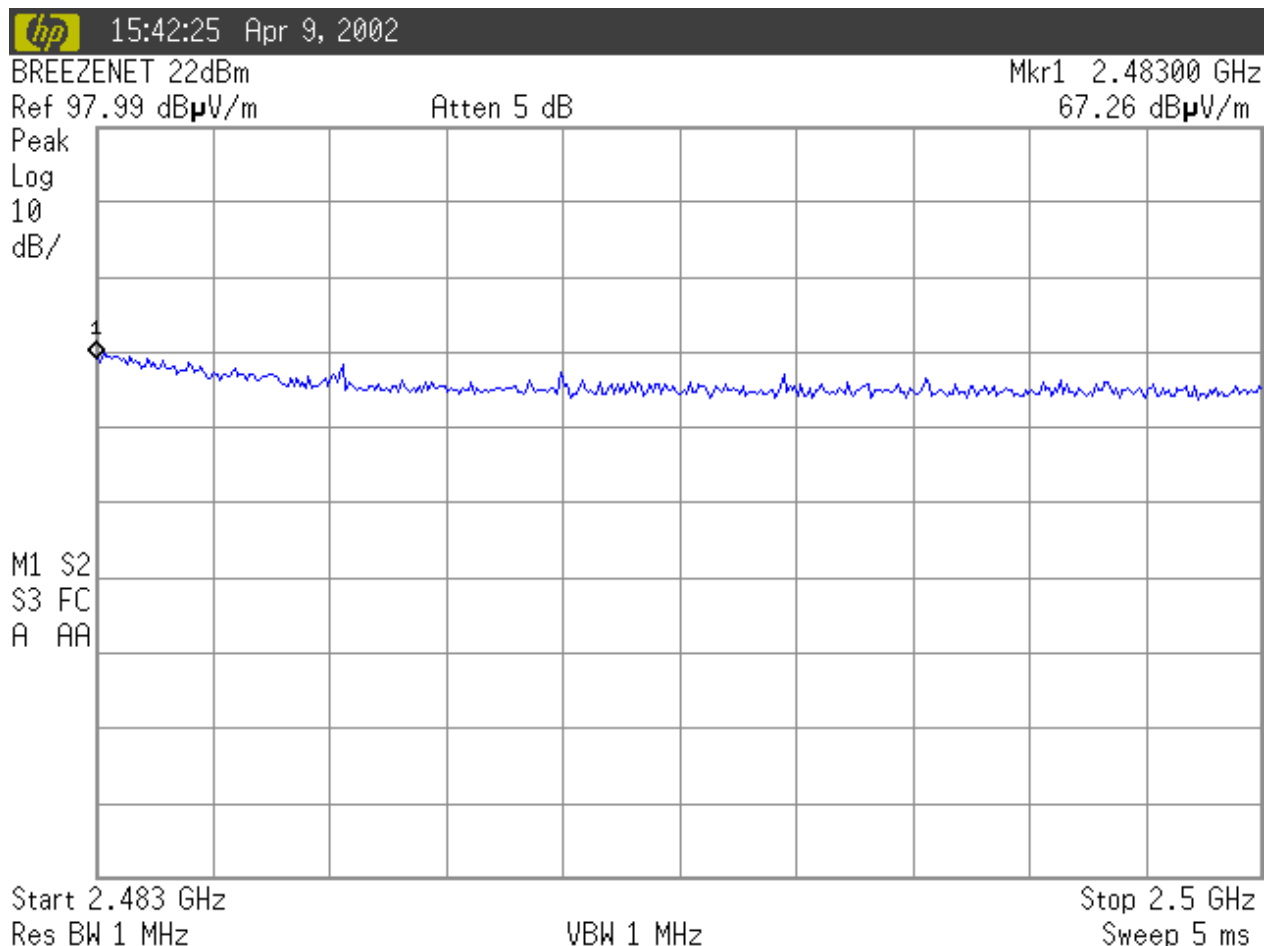
Title: Test on One Box 2.4 GHz Radio (BreezeNet)

Model: AP-10, AP-10D; SA-10, SA-10D; WB-10, WB-10D; SA-40, SA-40D

Plot # 6

Radiated emissions measured in restricted band 2483.5–2500 MHz
at High operating frequency 2482 MHz

Detector used: Peak



Test Report No.: 8212306905 Rev1.

Page 18 of 34 Pages

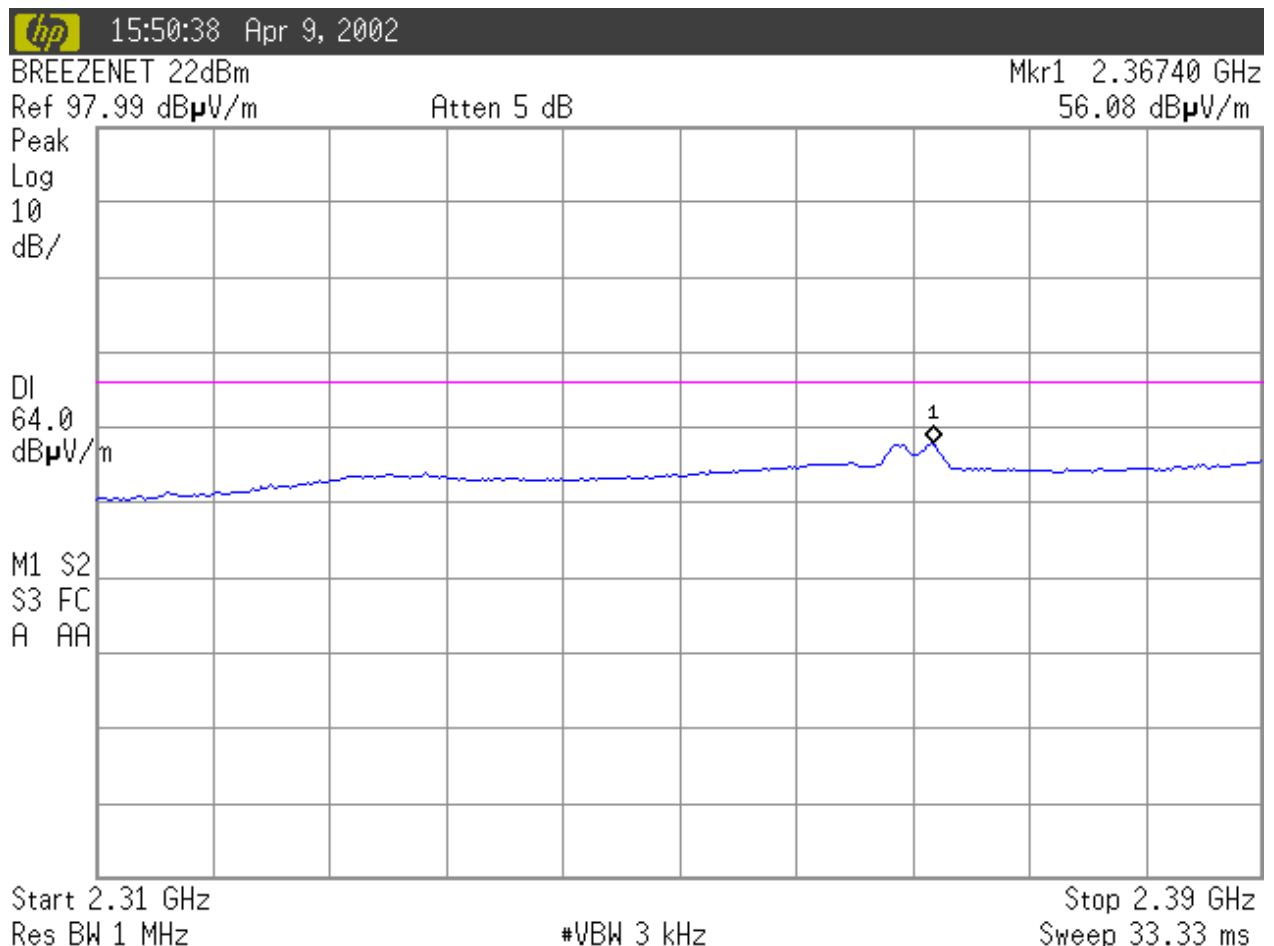
Title: Test on One Box 2.4 GHz Radio (BreezeNet)

Model: AP-10, AP-10D; SA-10, SA-10D; WB-10, WB-10D; SA-40, SA-40D

Plot #7

Radiated emissions measured in restricted band 2310 –2390 MHz
at Low operating frequency 2402 MHz

Detector used: Average



Test Report No.: 8212306905 Rev1.

Page 19 of 34 Pages

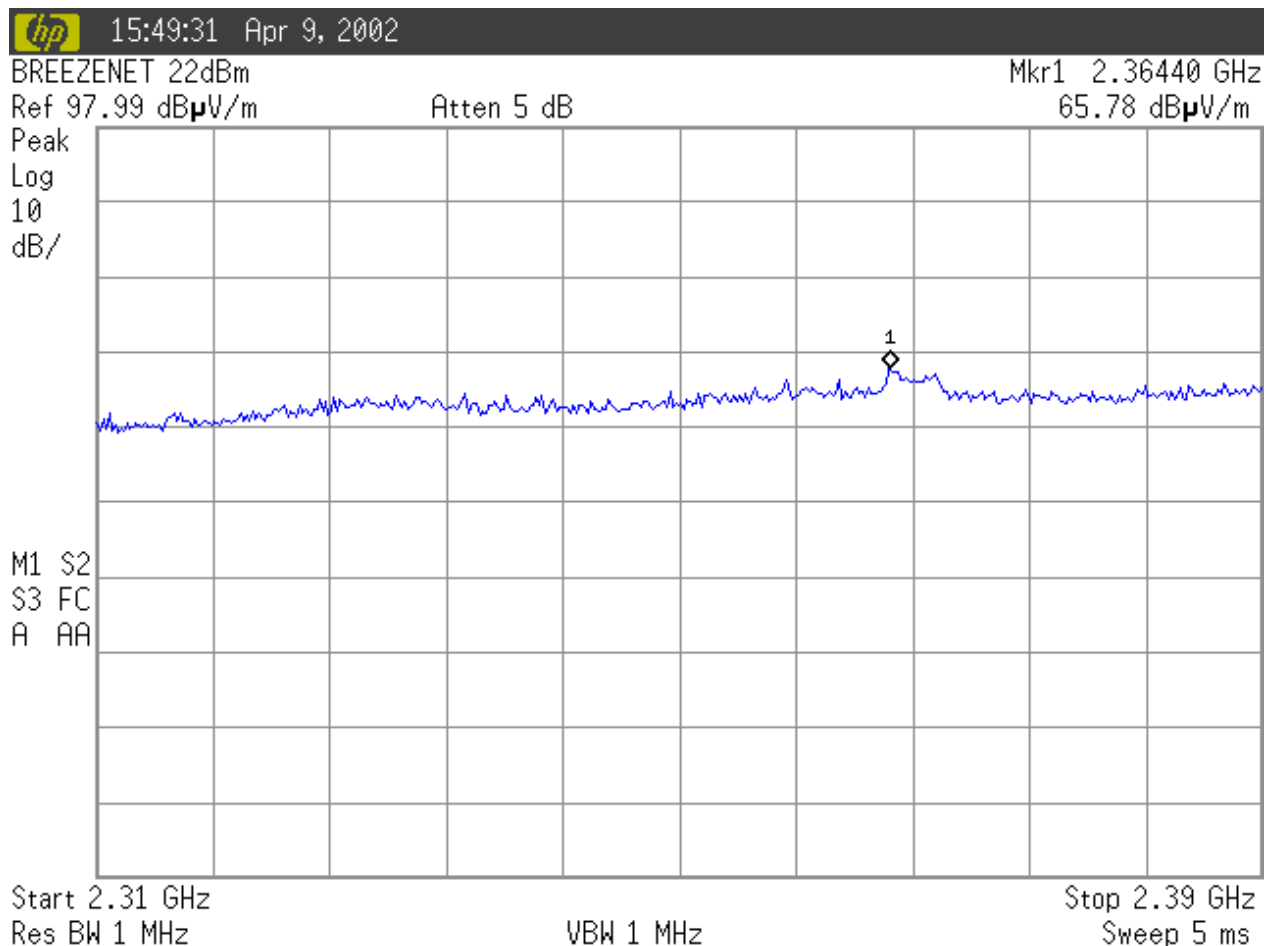
Title: Test on One Box 2.4 GHz Radio (BreezeNet)

Model: AP-10, AP-10D; SA-10, SA-10D; WB-10, WB-10D; SA-40, SA-40D

Plot #8

Radiated emissions measured in restricted band 2310 –2390 MHz
at Low operating frequency 2402 MHz

Detector used: Peak



Test Report No.: 8212306905 Rev1.

Page 20 of 34 Pages

Title: Test on One Box 2.4 GHz Radio (BreezeNet)

Model: AP-10, AP-10D; SA-10, SA-10D; WB-10, WB-10D; SA-40, SA-40D

3.5 Spurious Emission, Antenna conducted:

3.5.1 Requirements:

The EUTs spurious emissions antenna conducted shall not exceed value required in sections 15.247 (c).

3.5.2 Test procedure:

The EUTs antenna connector was connected directly to the spectrum analyzer input
The measurements were performed from 1 to 26 GHz for low, middle and high channels
were the unit is set to packetized transmission.
In addition output power measurements were performed with Power Meter.

3.5.3 Test results:

Test results are shown in Plots #9 to #14.

Output power measured with power meter:

Low channel: 21.4 dBm

Mid channel: 21.7 dBm

High channel: 21.3 dBm

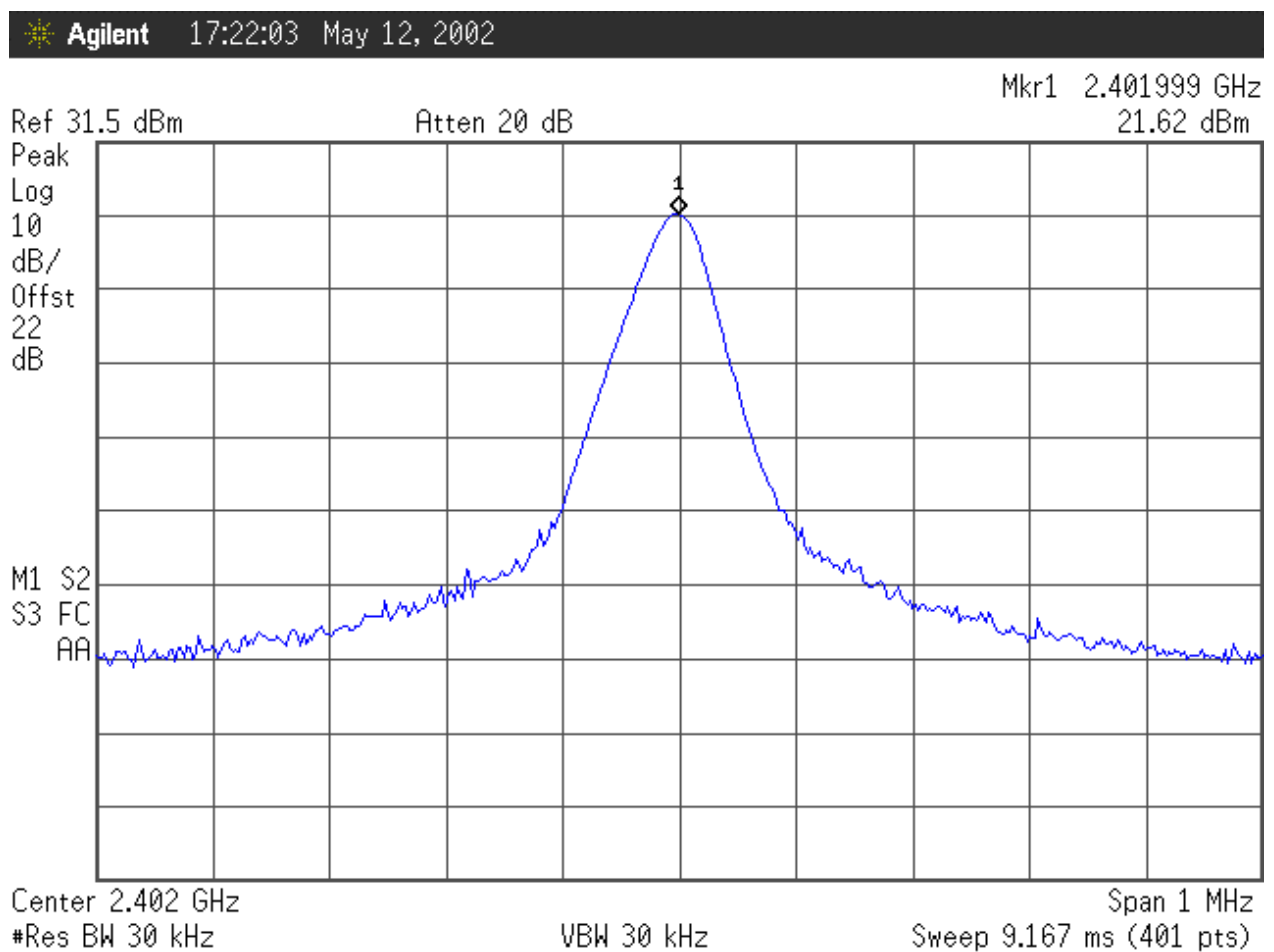
Test Report No.: 8212306905 Rev1.

Page 21 of 34 Pages

Title: Test on One Box 2.4 GHz Radio (BreezeNet)

Model: AP-10, AP-10D; SA-10, SA-10D; WB-10, WB-10D; SA-40, SA-40D

Plot # 9
Antenna conducted output power, Low operating frequency



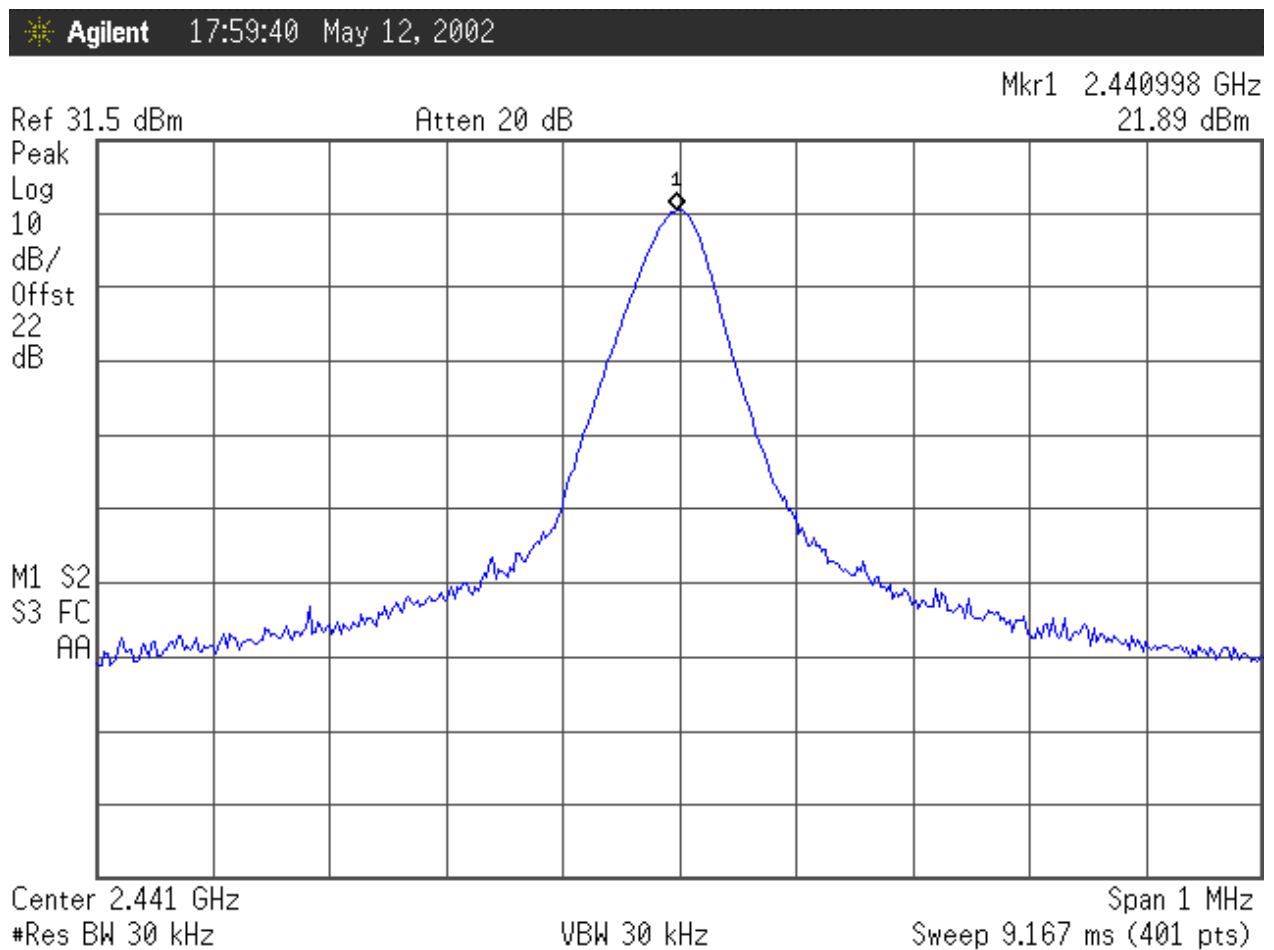
Test Report No.: 8212306905 Rev1.

Page 22 of 34 Pages

Title: Test on One Box 2.4 GHz Radio (BreezeNet)

Model: AP-10, AP-10D; SA-10, SA-10D; WB-10, WB-10D; SA-40, SA-40D

Plot # 10
Antenna conducted output power, MID operating frequency



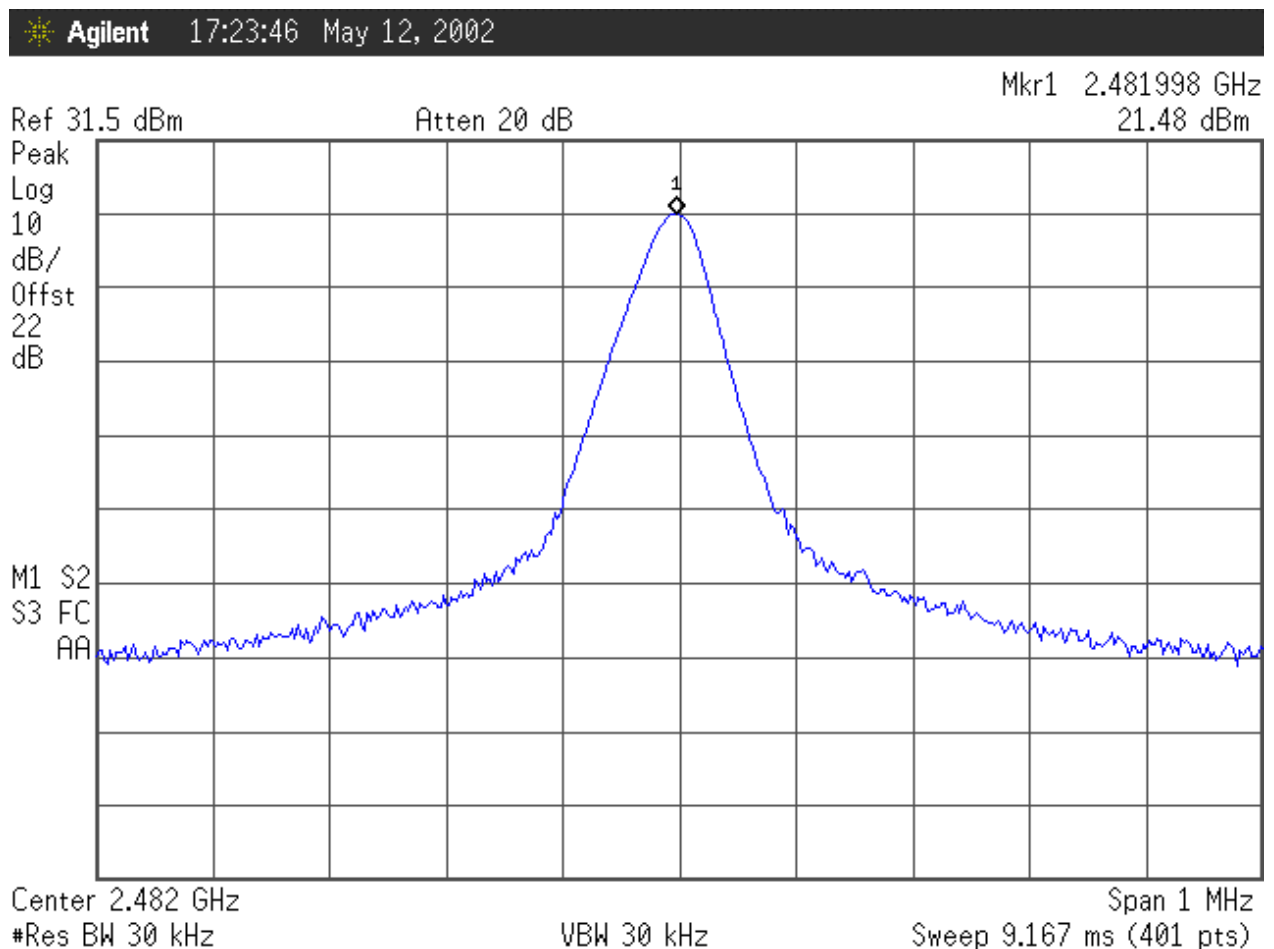
Test Report No.: 8212306905 Rev1.

Page 23 of 34 Pages

Title: Test on One Box 2.4 GHz Radio (BreezeNet)

Model: AP-10, AP-10D; SA-10, SA-10D; WB-10, WB-10D; SA-40, SA-40D

Plot #11
Antenna conducted output power, High operating frequency



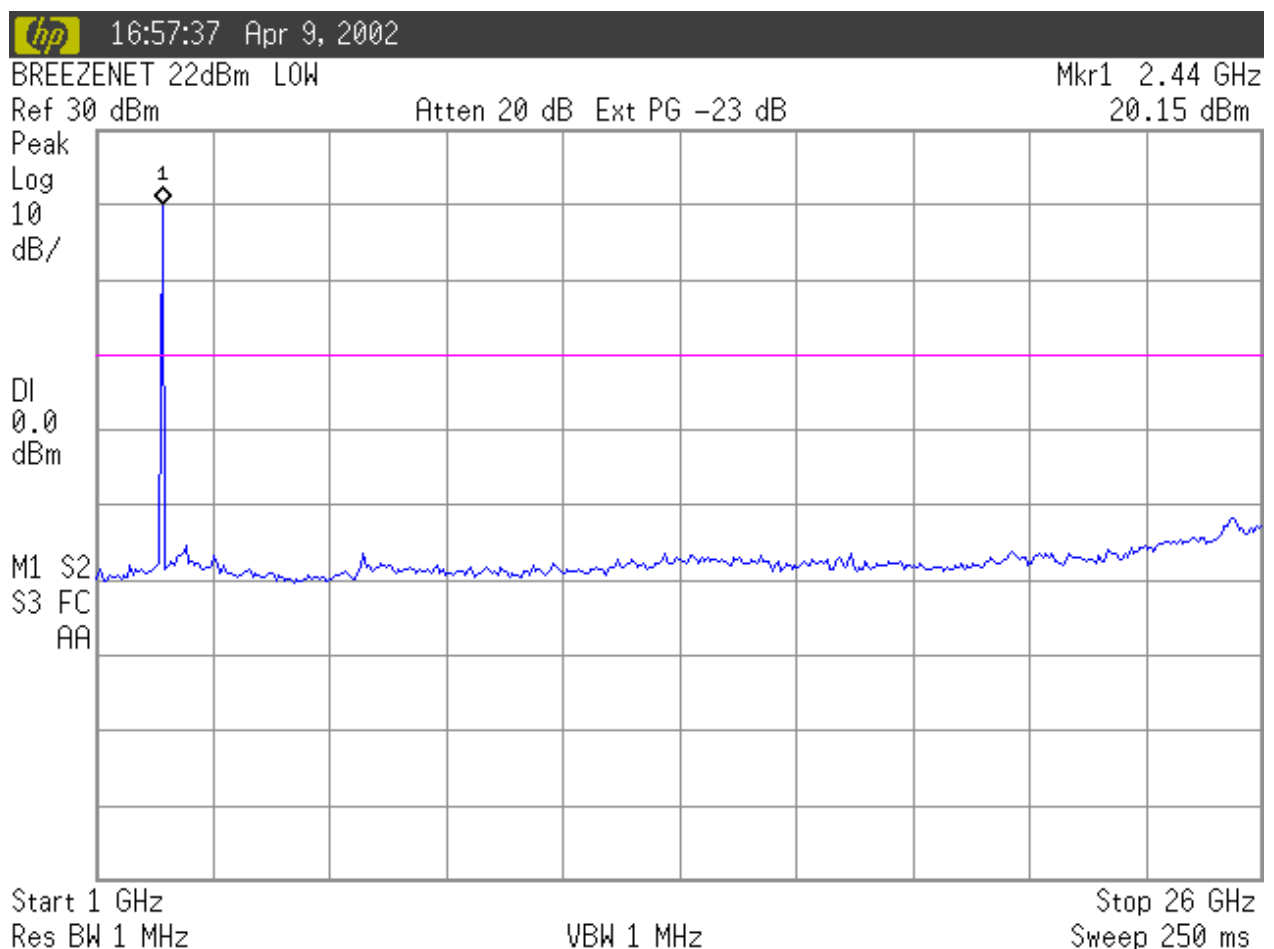
Test Report No.: 8212306905 Rev1.

Page 24 of 34 Pages

Title: Test on One Box 2.4 GHz Radio (BreezeNet)

Model: AP-10, AP-10D; SA-10, SA-10D; WB-10, WB-10D; SA-40, SA-40D

Plot # 12
Spurious Emission, Antenna conducted, Low operating frequency



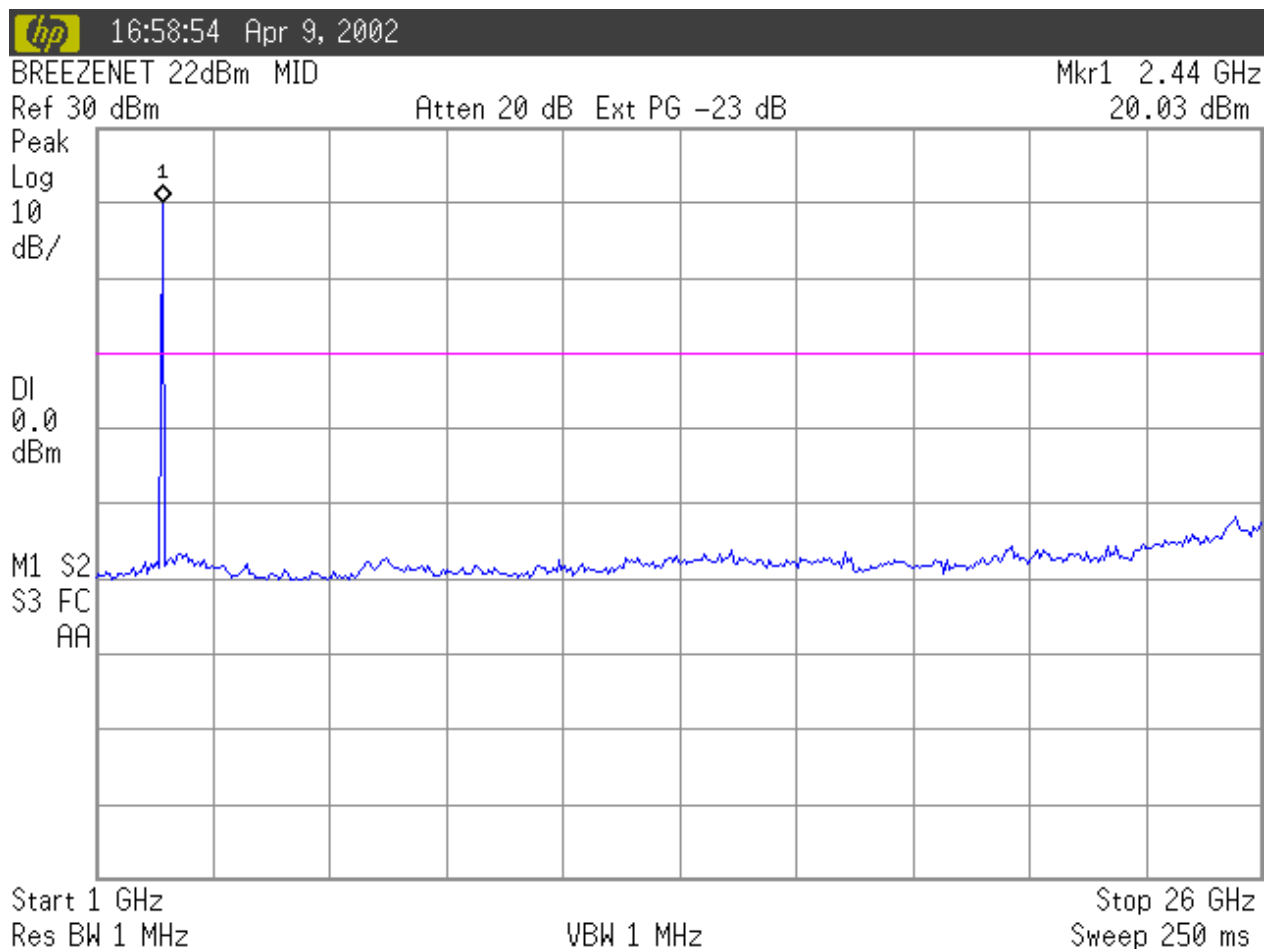
Test Report No.: 8212306905 Rev1.

Page 25 of 34 Pages

Title: Test on One Box 2.4 GHz Radio (BreezeNet)

Model: AP-10, AP-10D; SA-10, SA-10D; WB-10, WB-10D; SA-40, SA-40D

Plot # 13
Spurious Emission, Antenna conducted, Middle operating frequency



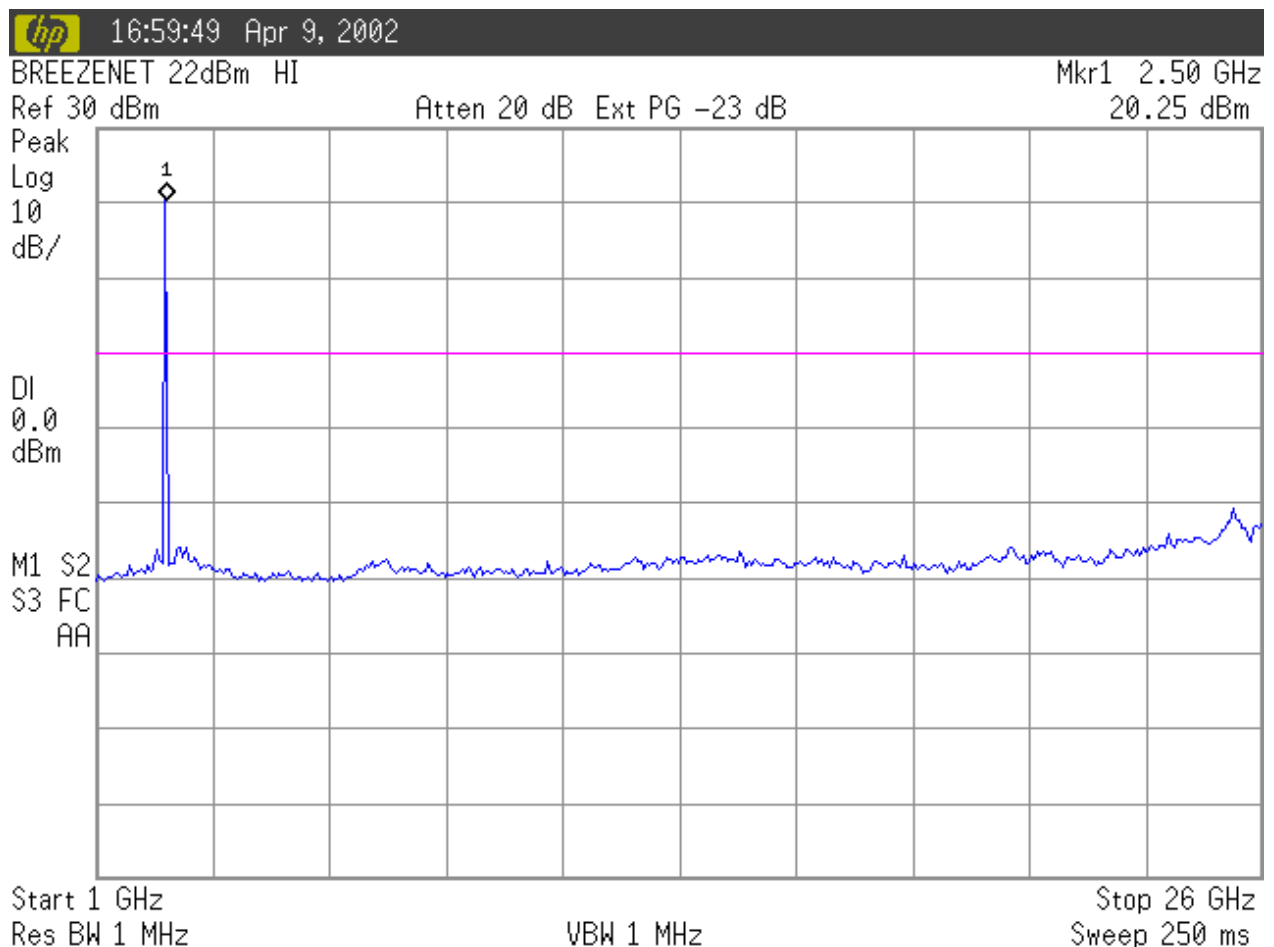
Test Report No.: 8212306905 Rev1.

Page 26 of 34 Pages

Title: Test on One Box 2.4 GHz Radio (BreezeNet)

Model: AP-10, AP-10D; SA-10, SA-10D; WB-10, WB-10D; SA-40, SA-40D

Plot # 14
Spurious Emission, Antenna conducted, High operating frequency



Test Report No.: 8212306905 Rev1.

Page 27 of 34 Pages

Title: Test on One Box 2.4 GHz Radio (BreezeNet)

Model: AP-10, AP-10D; SA-10, SA-10D; WB-10, WB-10D; SA-40, SA-40D

4 Compliance with specification

Test	FCC Part 15 Subpart C Sec #	Test result
Conducted emission	Sec.15.207	Complies
Spurious radiated emission	Sec.15.209	Complies
Radiated emissions in restricted bands	Sec.15.205	Complies
Spurious emissions antenna conducted	Sec.15.247 (c)	Complies



Telematics Laboratory
8 May, 2002



Name: Eng. Yuri Rozenberg

Position: Head of EMC Branch

Name Maxim Reizin

Position: Testing Technician

Test Report No.: 8212306905 Rev1.

Page 28 of 34 Pages

Title: Test on One Box 2.4 GHz Radio (BreezeNet)

Model: AP-10, AP-10D; SA-10, SA-10D; WB-10, WB-10D; SA-40, SA-40D

5 Appendix 1: Test equipment used

All measurements equipment is on SII calibration schedule with a recalibration interval not exceeding once a year.

Instrument	Manufacturer	Model	Serial No.	Last calibration date	Next calibration date
Spectrum analyzer 10 KHz-26.5 GHz	HP	E7405a	SII 4944	04/02	04/03
Antenna Double Ridge 1-18 GHz	EMCO	3115	SII4873	03/02	03/03
LISN 9 kHz – 30 MHz	FCC	LISN- 50/250-32-4- 16	SII 5023	05/01	05/02
Power Meter Power Sensor	HP	HP 437B HP 8481A	3125U08091	07/01	07/02
Transient limiter 0.009-200 MHz	HP	11947A	31074A3105	05/01	05/02

Test Report No.: 8212306905 Rev1.

Page 29 of 34 Pages

Title: Test on One Box 2.4 GHz Radio (BreezeNet)

Model: AP-10, AP-10D; SA-10, SA-10D; WB-10, WB-10D; SA-40, SA-40D

6 Appendix 2: Antenna Factor and Cable Loss

Cable Loss

Type: Sucoflex 104PE; Ser.No.21324/4PE; 4 m length

Point	Frequency (GHz)	Cable Loss (dB)
0	0.0-1.8	1.67
1	1.8 – 3.6	2.39
2	3.6 – 5.4	3.04
3	5.4-7.2	3.58
4	7.2-9.0	4.06
5	9.0-10.8	4.49
6	10.8-12.6	4.91
7	12.6-14.4	5.31
8	14.4-16.2	5.66
9	16.2-18.00	6.01

Antenna Factor

Double Ridged Guide Antenna mfr EMCO model 3115

Point	Frequency (MHz)	Antenna Factor (dB/m)
1	2000	27.4
2	2500	28.9
3	3000	31.0
4	4000	33.1
5	4500	32.5
6	5000	32.4
7	6000	53.7
8	6500	35.6
9	7000	36.4
10	7500	36.9
11	8000	37.0
12	8500	38.0
13	9000	38.6
14	9500	38.4
15	10000	38.4
16	10500	38.4
17	11000	38.9
18	11500	39.6
19	12000	39.4
20	12500	39.2
21	13000	40.3
22	13500	41.0
23	14000	41.2
24	14500	41.3
25	15000	40.0
26	15500	38.0
27	16000	38.1
28	16500	40.3
29	17000	42.2
30	17500	44.6
31	18000	46.2

Test Report No.: 8212306905 Rev1.

Page 30 of 34 Pages

Title: Test on One Box 2.4 GHz Radio (BreezeNet)

Model: AP-10, AP-10D; SA-10, SA-10D; WB-10, WB-10D; SA-40, SA-40D

7 Appendix 3: Test configuration illustration

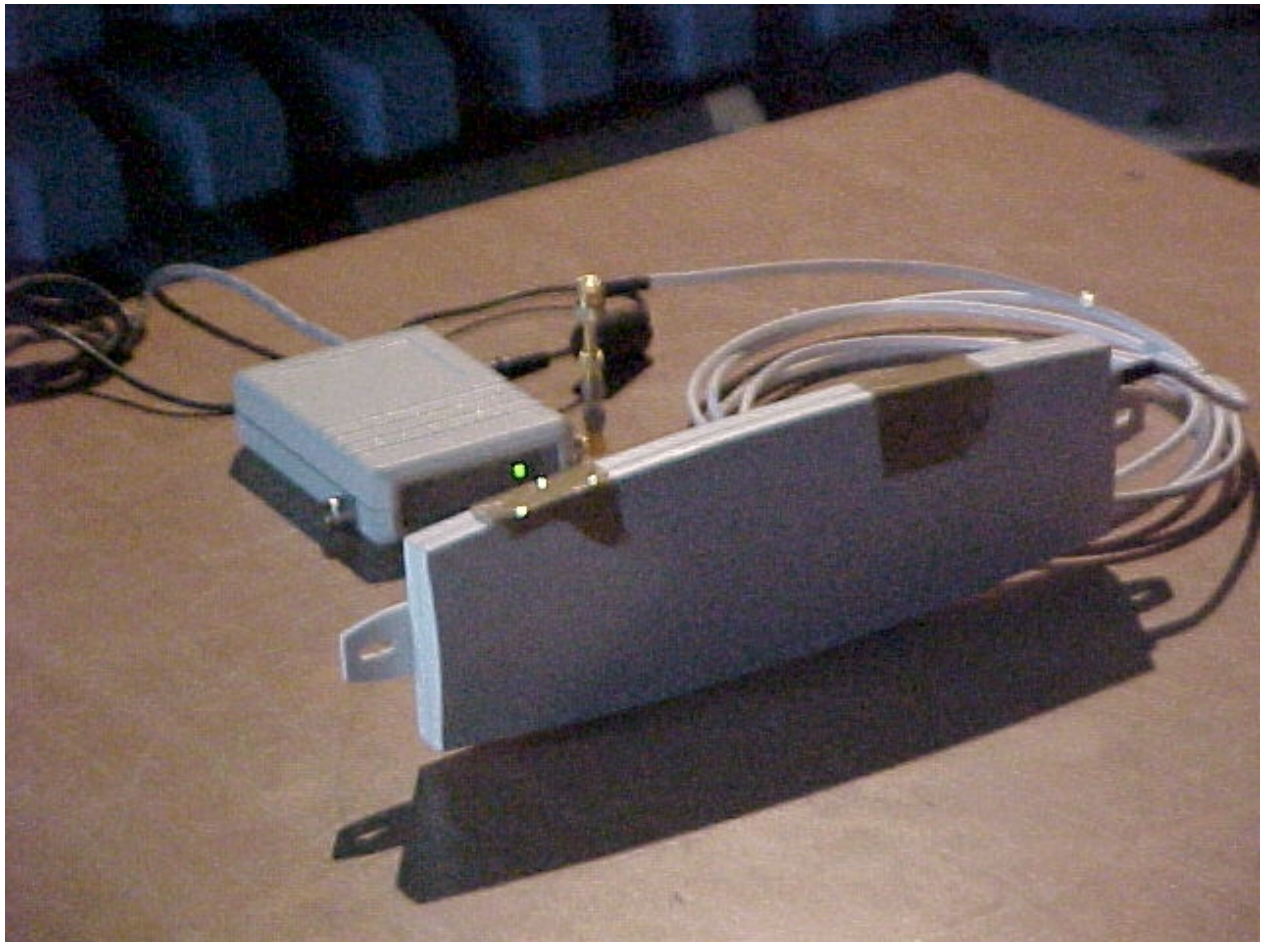


Photo #1.
One Box 2.4 GHz Radio

Test Report No.: 8212306905 Rev1.

Page 31 of 34 Pages

Title: Test on One Box 2.4 GHz Radio (BreezeNet)

Model: AP-10, AP-10D; SA-10, SA-10D; WB-10, WB-10D; SA-40, SA-40D



Photo #2.
One Box 2.4 GHz Radio

Test Report No.: 8212306905 Rev1.

Page 32 of 34 Pages

Title: Test on One Box 2.4 GHz Radio (BreezeNet)

Model: AP-10, AP-10D; SA-10, SA-10D; WB-10, WB-10D; SA-40, SA-40D

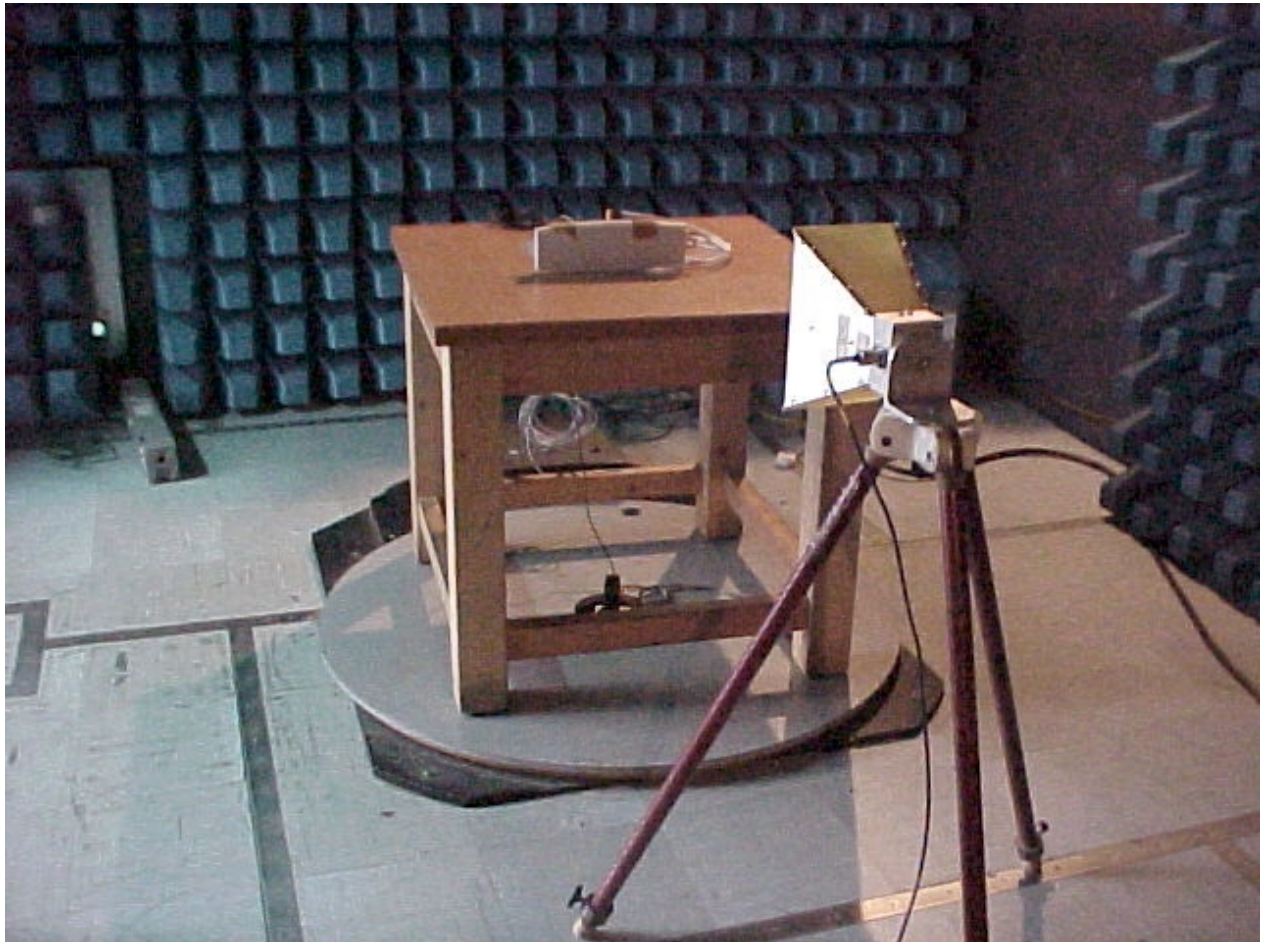


Photo #3
One Box 2.4 GHz Radio test setup

Test Report No.: 8212306905 Rev1.

Page 33 of 34 Pages

Title: Test on One Box 2.4 GHz Radio (BreezeNet)

Model: AP-10, AP-10D; SA-10, SA-10D; WB-10, WB-10D; SA-40, SA-40D



Photo #4
One Box 2.4 GHz Radio test setup

Test Report No.: 8212306905 Rev1.

Page 34 of 34 Pages

Title: Test on One Box 2.4 GHz Radio (BreezeNet)

Model: AP-10, AP-10D; SA-10, SA-10D; WB-10, WB-10D; SA-40, SA-40D



Photo #5
Antenna 2400-2700 MHz/TYP 11dBi