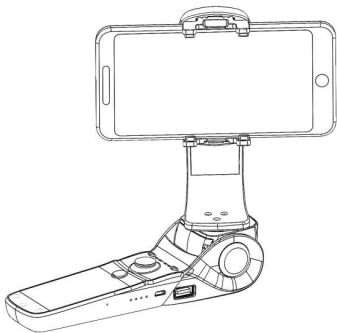


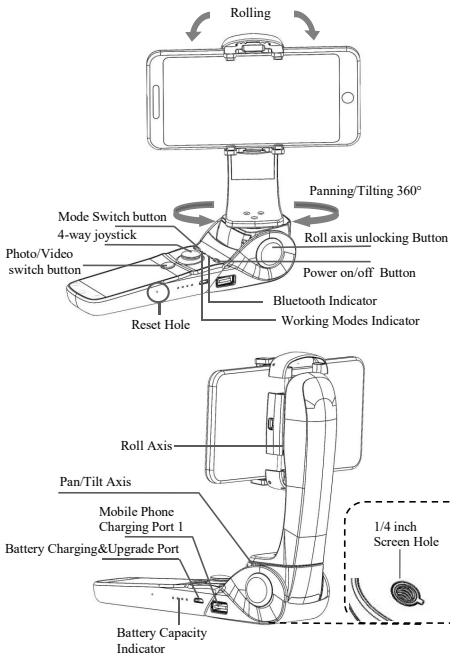
D1

Foldable Stabilizer for Smartphone



Production Introduction

1.Product Overview



2.Accessories List

Standard Accessories

USB Cable*1
Carry Bag*1
Manual *1
Warranty Card*1

Optional Accessories

Tripod
Extension Pole
Smartphone Charging Cable

Installation Instruction

1.Install the 'Hohem Studio' App

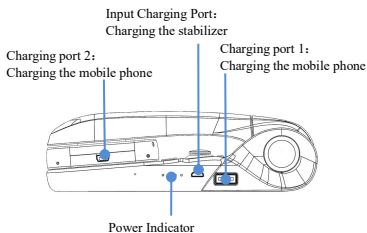
Search for 'Hohem Studio' in the App Store or Google Play
And install the app on your mobile phone.



*'Hohem Studio' supports iOS 8.0 and Android 4.4 or above

2. Stabilizer Charging & Smartphone Charging

Fully charge the stabilizer before using it for the first time
Using the standard USB Cable Connecting to the Stabilizer charging port
(or other power sources)



a. 4 Led lights indicators

4 Led lights on means power is 100%

3 Led lights on means power is 75%

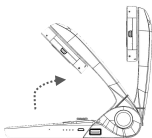
2 Led lights on means power is 50%

b.Indicator Light Fast Flashing: Charging status

c.Indicator Light Normal: Fully charged status

*the charging time is about 4 hours while directly charging from
the wall charger

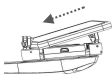
3. Mount and Balance the mobile phone



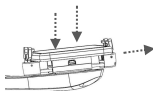
a. Open the Roll Axis



b. Pull the mobile phone clip to the max and make sure the charging port 2 and smartphone charging port are at the same side



c. Put one side of the mobile phone first




d. Then put another side of the mobile phone into the clip and make sure they are fit together with each other.



e. Balance the mobile phone
With the stabilizer power off, make sure the mobile phone remains level when released.

4. Connect "Hohem Studio" APP

- a. Open the bluetooth on the mobile phone:

For iPhone, please off "Portrait Orientation "

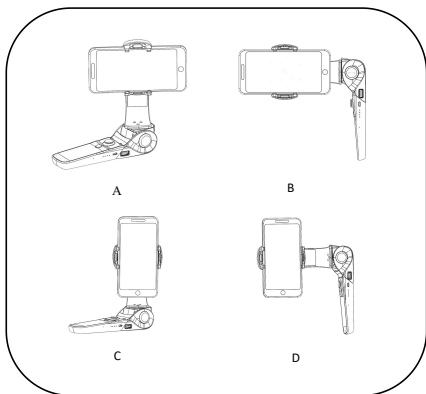
For Android Phone, please off "auto-rotate screen"

- b. Open APP, choose the product model then confirm into Bluetooth connection

- c. Power on: Long press power button until M1&M2 lights quick flashing for twice
(Power off : Long press power button until M1&M2 lights quick flashing for twice)

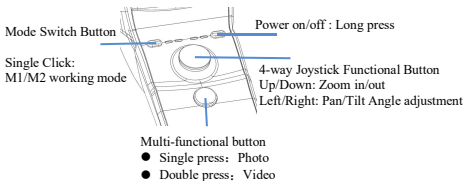
- d. Click the device and then start pairing

5. Four Main Usages Status



Operation Instruction&Working Mode

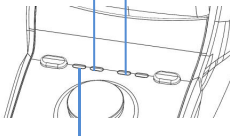
1.Operation Instruction



2. Indicator Instruction

M2 light normal on:
Lock working mode

Bluetooth light ON means
Bluetooth Connected.
Bluetooth light OFF means
Bluetooth not Connected.



M1 Light normal on: Pan/Tilt Working Model
(M1&M2 quick flashing simultaneously for twice : Power on/off)

3. Working Mode Instruction

Working Modes

Working Mode	Instruction
M1: Following Mode	The default setting is following mode, the Pan /Tilt axis will follow by hand holding movement
M2: Locking Mode	The Pan Axis and Tilt Axis are both fixed.
Setting&Locking Rolling Angle by Hand	Position the smart phone by hand for 1 second, the roll angle will be fixed

Smart Shooting Mode

Open the APP 'Hohem Studio' and connect the stabilizer via Bluetooth

- Auto Face-Tracking Shooting
- Single Click for 180°/360° panorama

*It will add more new functions in the 'Hohem Studio' App, such as 'Motion Time-lapse', 'Single Click for Calibration' and so on.

Parameters

Material	ABS+PC
Gimbal Size(Folding Status)	175*55*53mm
Weight (Including Battery)	380g
Working Time	10 Hours for stabilizer
Angle Vibration Range	$\pm 0.01^{\circ}$
Controllable Vibration Range	Pan/Tilt 360°; Roll 320°
Max Controllable Rotating Speed	150°/S
Compatible Smartphone Size	2.3"-3.4"width range,From Iphone5 to 7Plus,Galaxy,Huawei and more Android Smart phones upto 6" screen.
Bluetooth	BLE4.0
Battery	
Type	Lithium Battery
Capacity	3600mAh
Voltage	3.7V
Charging Temperature	5-25°
Operating Temperature	0-50°
Frequency Range / Power	2400MHz~2483.5MHz / 1.79dBm

Calibration(Initialization)

If the stabilizer has the following situations, please calibrate it:

The title angle is not leveled with the vertical surface.

Under the lock mode, the panning angle drifting.

Calibration Operation Instruction :

Method 1: Off-line Calibration

- 1.Power on the stabilizer(around 3 seconds), long press the mode switch button over 6 seconds till the M1&M2 light constant on.
- 2.Lay the stabilizer on a static flat surface; make sure it has no shaking.
Calibration is finish when the M1&M2 light is continuously flashing for 3 times.
- 3.Power off the stabilizer and restart it, please repeat step(1)(2) to reinitialize if failed.

Method 2: On-line Calibration

Please visit our official website <http://www.hohem-tech.com>, and visit the SUPPORT to download the calibration software of D1 and operation introduction to calibrate the stablizer.



Firmware upgrade

Please visit our official website <http://www.hohem-tech.com>, and visit the SUPPORT to download the USB driver software, the software of D1 firmware upgrade, the latest Firmware and operation manual to upgrade the firmware.

We provide various kinds of optional accessories. Please contact us for more information. Email: service@hohem-tech.com

DISCLAIMER

- ① Please install and use the product according to the manual.
 - ② Please use the standard battery charger.
 - ③ Please reconfirm the gimbal and the smartphone are well installed before power on.
 - ④ Keep the battery away from fire and heat source.
 - ⑤ Prohibit any user for any illegal purpose. Users will be responsible for all behavior of purchasing and using the products.
For any unknown sources or usage, we will not provide any service.
 - ⑥ If there is any question, please contact the technician of Hohem Tech, we won't be responsible for any wrong operations by users.
 - ⑦ If there is any question, please contact the technician of Hohem Tech, we won't be responsible for any wrong operations by users.
 - ⑧ Hohem Tech reserves the right for final explanation.
-

hohem®

Hohem Technology Co.,Ltd
<http://www.hohem-tech.com>
Email: service@hohem-tech.com

Manufacturer declarations

Warranty

USB

Due to the used enclosure material, the product shall only be connected to a USB Interface of version 2.0 or higher. The connection to so called power USB is prohibited.

Temperature

The suitable temperature for the product and accessories is -10°C~40°C.

Battery

CAUTION RISK OF EXPLOSION IF BATTERY IS REPLACED BY AN INCORRECT TYPE.
DISPOSE OF USED BATTERIES ACCORDING TO THE INSTRUCTIONS

SIMPLIFIED EU DECLARATION OF CONFORMITY

Hereby, Hohem Technology Co., Ltd. declares that the radio equipment type **D1** is in compliance with Directive 2014/53/EU. The full text of the EU declaration of conformity is available at the following internet address: <http://www.hohem-tech.com>


signature

FCC caution

The device has been evaluated to meet general RF exposure requirement, The device can be used in portable exposure condition without restriction
Federal Communication Commission (FCC) Radiation Exposure Statement
Power is so low that no RF exposure calculation is needed.

FCC statements

This device complies with part 15 of the FCC rules. Operation is subject to the following two conditions: (1) this device may not cause harmful interference, and (2) this device must accept any interference received, including interference that may cause undesired operation.

NOTE: The manufacturer is not responsible for any radio or TV interference caused by unauthorized modifications or changes to this equipment. Such modifications or changes could void the user's authority to operate the equipment.

NOTE: This equipment has been tested and found to comply with the limits for a Class B digital device, pursuant to part 15 of the FCC Rules. These limits are designed to provide reasonable protection against harmful interference in a residential installation. This equipment generates uses and can radiate radio frequency energy and, if not installed and used in accordance with the instructions, may cause harmful interference to radio communications. However, there is no guarantee that interference will not occur in a particular installation. If this equipment does cause

harmful interference to radio or television reception, which can be determined by turning the equipment off and on, the user is encouraged to try to correct the interference by one or more of the following measures:

- Reorient or relocate the receiving antenna.
- Increase the separation between the equipment and receiver.
- Connect the equipment into an outlet on a circuit different from that to which the receiver is connected.
- Consult the dealer or an experienced radio/TV technician for help.