

耀登电通科技(昆山)有限公司

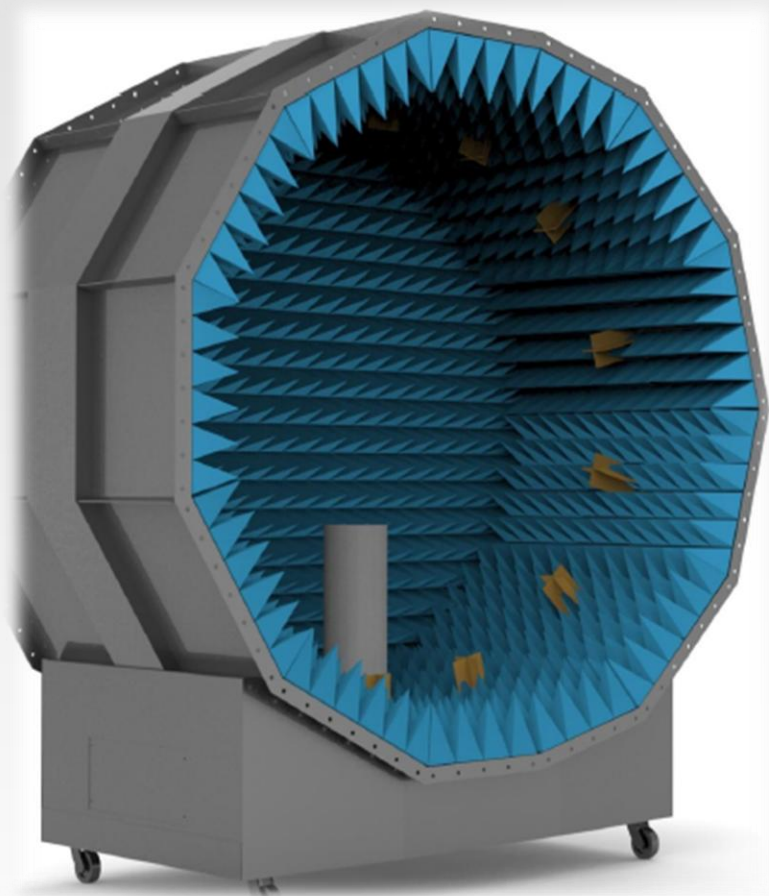
Auden Communications & Multimedia Techno (Kunshan) Co., Ltd

# TL30 Onboard reporting Antenna Evaluating Report



Date	Rev	Description
2023-09-20	01	调试

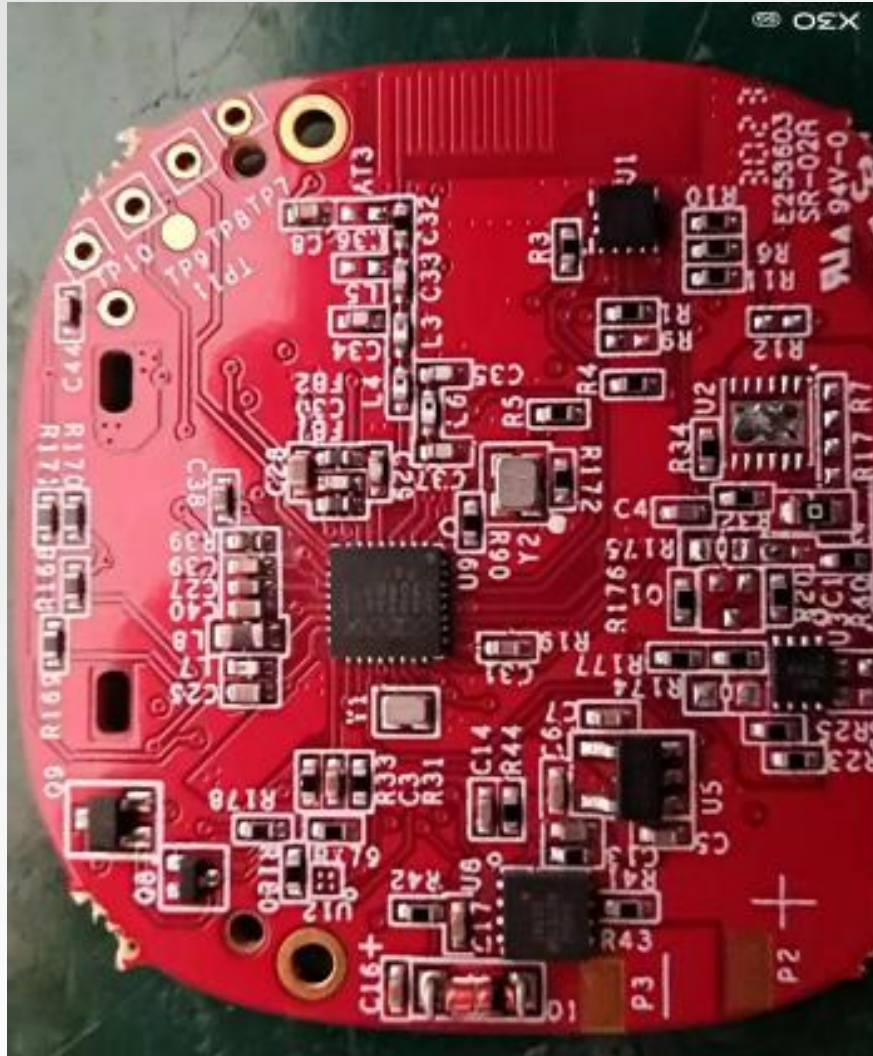




- Chamber : GTS Rayzone1800
- 网络分析仪 : Agilent E5071C
- 2G/3G综测仪 : Agilent 8960
- LTE综测仪 : Anritsu MT8820
- TD综测仪 : StarPoint SP6010
- WIFI综测仪 : Anritsu MT8860
- GPS信号源 : Agilent E4438C

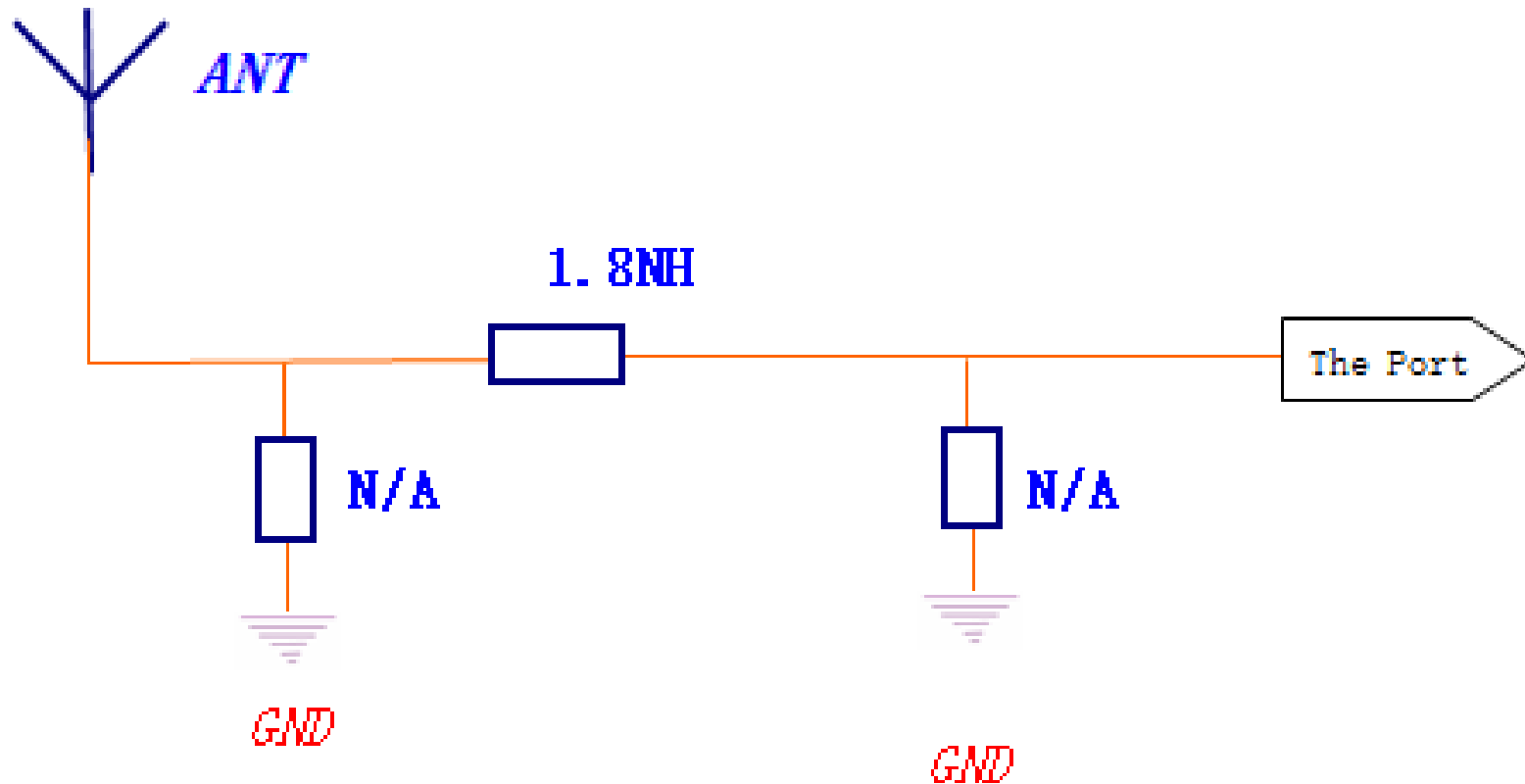


使用系统	Band	使用系统	Band
GSM		WIFI / BT	2.4G~2.5G
WCDMA		全球定位	GPS/BD
TD-SCDMA		FM	
CDMA		Others	
FDD LTE			
TDD LTE			



Antenna size: 4.63mm wide  
8.05mm long





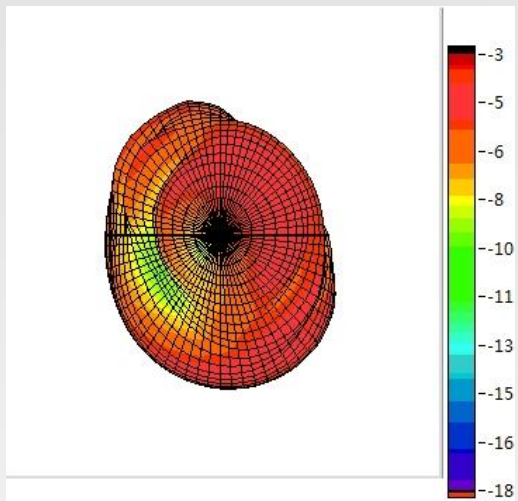
# 无源驻波数据



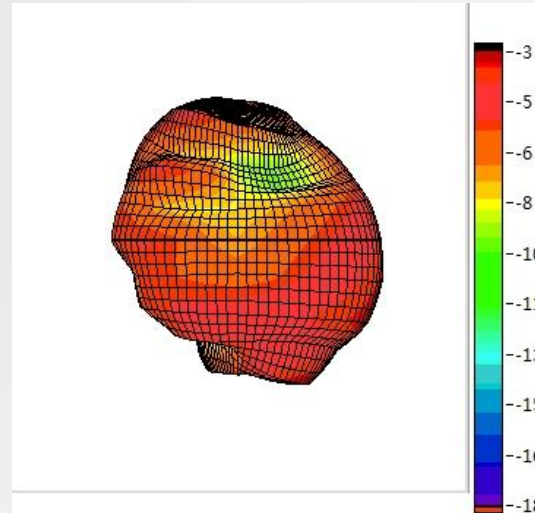
Frequency	Efficiency Total (%)	Gain Total (dBi)
2.41G	31.48	-1.58
2.42G	31.41	-1.46
2.43G	30.76	-1.34
2.44G	29.44	-1.44
2.45G	30.2	-1.12
2.46G	29.17	-1.31
2.47G	26.79	-1.56
2.48G	26.36	-1.64
2.49G	23.23	-2.18
2.5G	21.13	-2.59



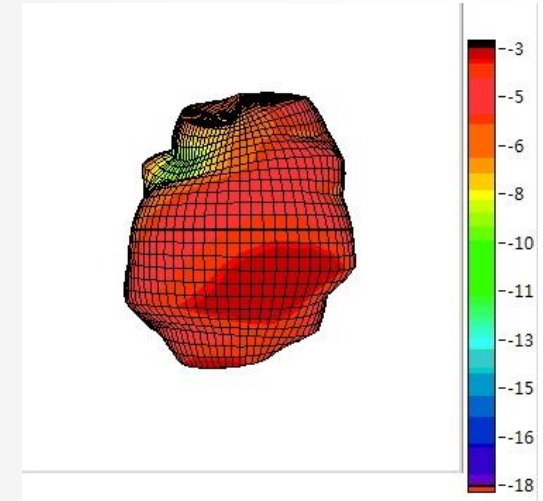
2.4GHzFront-Back View



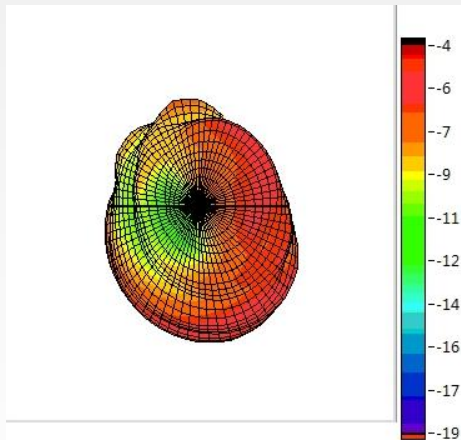
2.4GHzLeft-Right View



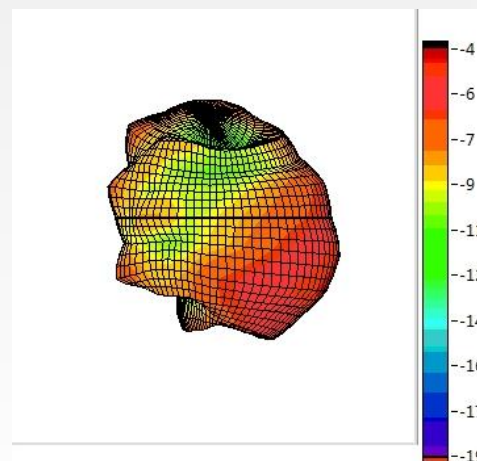
2.4GHzUp-Down View



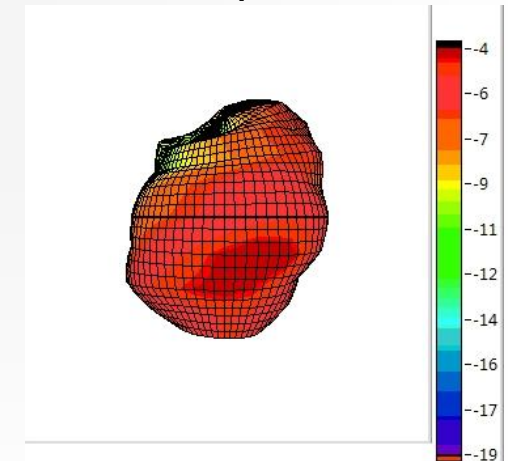
2.5GHzFront-Back View



2.5GHzLeft-Right View



2.5GHzUp-Down View

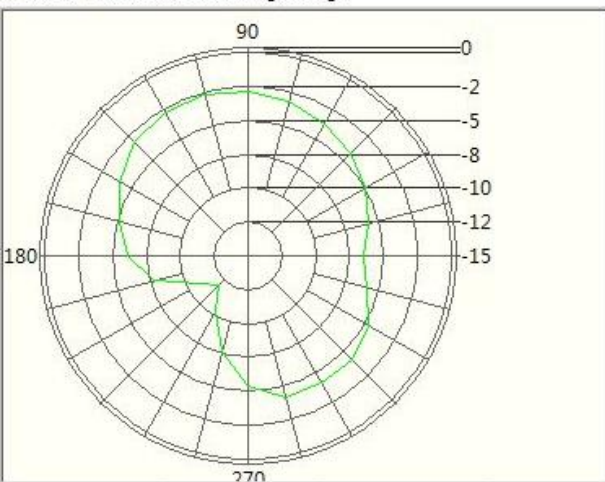




# 2D

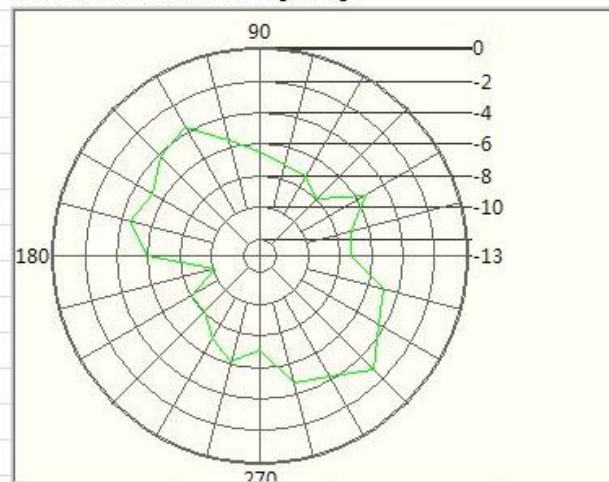
2.45GHz H

Excel XY Plot (Value dB / Angle deg.)



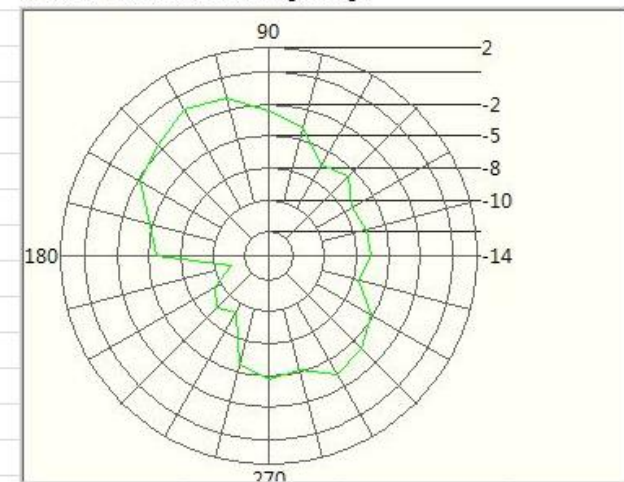
2.45GHz E1

Excel XY Plot (Value dB / Angle deg.)



2.45GHz E2

Excel XY Plot (Value dB / Angle deg.)



# Thank You



**AUDEN Techno Corp. Taiwan**

**TEL:886-3-363-1901**

**No.19 Lane 772, Ho Ping Road Bade City,  
Taoyuan Hsien, Taiwan.**

**AUDEN**  
**ASPIRE**  
**UPGRADE**  
**DEVOTE**  
**EXCELLENCE**  
**NAVIGATOR**

**AUDEN communications & Multimedia Techno  
(Kunshan) Co. Ltd.**

**TEL: 86 512 5764 6998**

**No.15 Ying-bing Rd Luyang Town Kun Shan Jiang Su  
China**

