

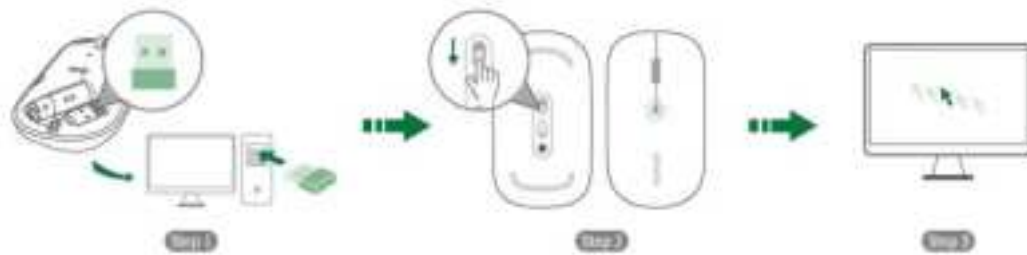
# User manual

Product name: Receiver

Model number: URX01

## Wireless-2.4G

DE: Wireless-2.4G | FR: Sans Fil-2.4G | ES: Inalámbrico-2.4G | IT: Wireless-2.4G | JP: 2.4G ワイヤレス受信機 | 2.4G-اللاسلكي | AR: | NL: Draadloos-2.4G | SE: 1

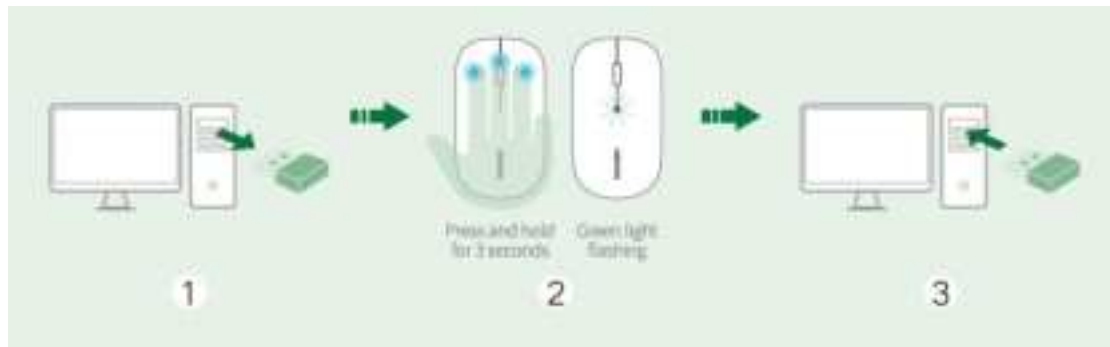


## EN

Step 1: Take the USB receiver out and insert it into the USB port.

Step 2: Turn on the product and the indicator lights green.

Step 3: Randomly click the mouse to make sure it works normally.



## EN

### **Forced Pairing**

If you cannot pair the product with your devices, please do as follows:

- ① Remove the receiver from your mouse.
- ② Press and hold "Left + Right + scroll wheel" simultaneously for 3 seconds until the indicator blinks green.
- ③ Insert the receiver into the device.

## FCC Warning

This device complies with part 15 of the FCC Rules. Operation is subject to the following two conditions: (1) This device may not cause harmful interference, and (2) this device must accept any interference received, including interference that may cause undesired operation.

Any Changes or modifications not expressly approved by the party responsible for compliance could void the user's authority to operate the equipment.

**Note:** This equipment has been tested and found to comply with the limits for a Class B digital device, pursuant to part 15 of the FCC Rules. These limits are designed to provide reasonable protection against harmful interference in a residential installation. This equipment generates uses and can radiate radio frequency energy and, if not installed and used in accordance with the instructions, may cause harmful interference to radio communications. However, there is no guarantee that interference will not occur in a particular installation. If this equipment does cause harmful interference to radio or television reception, which can be determined by turning the equipment off and on, the user is encouraged to try to correct the interference by one or more of the following measures:

- Reorient or relocate the receiving antenna.
- Increase the separation between the equipment and receiver.
- Connect the equipment into an outlet on a circuit different from that to which the receiver is connected.
- Consult the dealer or an experienced radio/TV technician for help.

The device has been evaluated to meet general RF exposure requirement. The device can be used in portable exposure condition without restriction.

## **IC Warning**

This device complies with Industry Canada's licence-exempt RSSs. Operation is subject to the following two conditions:

- (1) This device may not cause interference; and
- (2) This device must accept any interference, including interference that may cause undesired operation of the device.

Cet appareil est conforme aux CNR exemptes de licence d'Industrie Canada .  
Son fonctionnement est soumis aux deux conditions suivantes :

- ( 1 ) Ce dispositif ne peut causer d'interférences ; et
- ( 2 ) Ce dispositif doit accepter toute interférence , y compris les interférences qui peuvent causer un mauvais fonctionnement de l'appareil.

The device has been evaluated to meet general RF exposure requirement.  
The device can be used in portable exposure condition without restriction.