



MODEL: TT-BH074
WIRELESS STEREO EARPHONES
User Guide

IMPORTANT SAFETY INSTRUCTIONS

Thank you for choosing the TaoTronics TT-BH074 Wireless Stereo Earphones. Please read this user manual carefully and keep it for future reference. If you need any assistant regarding this product, please email support@taotronics.com with details.

WARNINGS

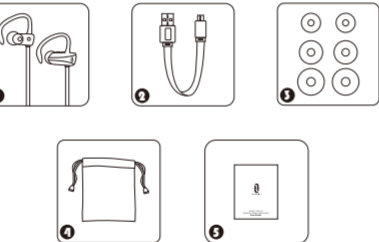
- Contains small parts, which may be a choking hazard. Not suitable for children under age 3.
- To reduce the risk of fire or electrical shock, do not expose the product to rain or moisture.
- Do not expose this apparatus to dripping or splashing and do not place objects filled with liquids on or near the apparatus. As with any electronic product, use care not to spill liquids into any part of the system. Liquids can cause a failure and/or a fire hazard.
- Do not place naked flame sources, such as lighted candles, on or near the apparatus.
- Do not disassemble, heat above 100°C (212°F), or incinerate.
- Do not use your earphones while it is connected to the charger.
- Do not use the earphones at high volume for an extended period of time. Doing so can cause hearing loss. Always listen at moderate levels.

CAUTIONS:

- Make no modification to the system or accessories. Unauthorized alterations may compromise safety, regulatory compliance, and system performance and may void the warranty.
- Operate this product within the temperature range of -4°F to 113°F (-20°C to 45°C) only. Damage caused by use out of the range may not be covered by the warranty.

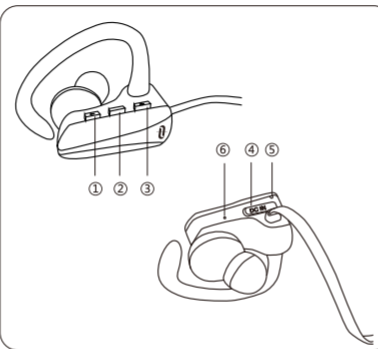
- Check and follow local laws regarding use of a mobile phone and earphones/headphones while operating any vehicle or using equipment that requires your full attention. If you use the earphones/headphones while engaging in any such activity, be sure to focus on safety.

PACKAGE CONTENTS



- 1 x TaoTronics Wireless Stereo Earphones (TT-BH074)
- 1 x USB Charging Cable
- 6 x Ear Tips (two are attached to the earbuds)
- 1 x Travel Pouch
- 1 x User Manual

PRODUCT DIAGRAM



- 1 Volume-/Previous Track
- 2 Multifunction Button
- 3 Volume+/Next Track
- 4 USB Charging Port
- 5 Microphone
- 6 LED Indicator

BUTTON CONTROL

Function	Operation	Voice Prompt
Power On	Press and hold the Multifunction Button until the blue indicator lights up.	Power On
Power Off	Press and hold the Multifunction Button until the red indicator lights up.	Power Off
Bluetooth Pairing	When the earphone is off, press and hold the Multifunction Button for 6-8 seconds until the LED indicator flashes blue and red alternately.	Pairing
Play / Pause	Press the Multifunction Button once	/
Volume + / -	Press the Volume + / - Button once	Beep when maximum / minimum volume is reached
Next / Previous Track	Press and hold the Volume + / - Button	/
Answer / Hang up Calls	Press the Multifunction Button once	Ring tone for incoming calls Beep when answer / hang up

Reject Calls	Press and hold the Multifunction Button for 1-2 seconds	Beep
Mute Calls	During the calls, press the Volume + and Volume - Buttons simultaneously to mute or unmute	/
Last Number Redial	Press the Multifunction Button twice	Beep
Successfully Paired	/	Connected

Note:

The earphones automatically turn off when:

- No connection for 10 minutes
- Battery voltage under 3.2V
- Connecting with charging cable

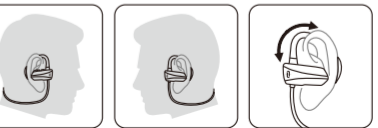
LED INDICATORS

LED Indicator	Status
Red (Solid)	Charging
Blue (Solid)	Fully charged
Blue and Red (Flashing)	In Pairing mode
Blue (Flashes every 5s)	Paired with a Bluetooth® device
Blue (Flashes every 0.5s)	Not paired with any Bluetooth® devices
Red (Flashes every 5s)	Battery low

HOW TO WEAR

Please wear the earphones as shown below:

- Choose the tips that fit you best, and attach them onto the earphones.
- Wear the earphones and the hooks on your ears and adjust for the best fit.



TAOTRONICS
www.taotronics.com

ASIA PACIFIC

E-mail: support.jp@taotronics.com(JP)
JP Importer: 株式会社SUNVALLEY JAPAN
Address: 〒104-0032 東京都中央区八丁堀3丁目18-6 PMO京橋東9F

EUROPE

E-mail:
support.uk@taotronics.com(UK)
support.de@taotronics.com(DE)
support.fr@taotronics.com(FR)
support.es@taotronics.com(ES)
support.it@taotronics.com(IT)
EU Importer: ZBT International Trading GmbH
Address: Halstenbeker Weg 98C, 25462 Rellingen, Deutschland

NORTH AMERICA

E-mail: support@taotronics.com(US)
support.ca@taotronics.com(CA)
Tel: 1-888-456-8468 (Monday-Friday: 9:00 - 17:00 PST)
US Distributor: SUNVALLEYTEK INTERNATIONAL INC.
Address: 46724 Lakeview Blvd, Fremont, CA 94538

MANUFACTURER

Manufacturer: Shenzhen NearbyExpress Technology Development Co.,Ltd.
Address: 333 Bulong Road, Shenzhen, China, 518129
Learn more about the EU Declaration of Conformity:
<https://www.taotronics.com/downloads-TT-BH074-CE-Cert.html>



TT-BH074_V1.1 EN

Note:

- Please note the “L” and “R” marks on the earphone.
- Three pairs of different-sized ear tips are included (including one pair on the earphone itself).

USE YOUR EARPHONES

1. Charging
- 1) Connect the charging port with any USB charging adapter or active computer USB port.

2) Charging will start automatically with the LED indicator turning solid red.

3) Once fully charged, the LED indicator will turn solid blue.

Note:

- Charge the earphones at least once every 6 months when not using for a long time.
- Make sure the battery is fully charged before putting the earphones away for storage.

2. Initial Pairing
- 1) Make sure the earphones and your Bluetooth® device are next to each other (within 3 feet / 1 meter).

2) Press and hold the Multifunction Button for 6-8 seconds to bring the earphones into pairing mode with the LED indicator flashing blue and red alternately.

- 3) Activate Bluetooth® feature on your phone and search for nearby Bluetooth® connections.

4) Find “TaoTronics TT-BH074” in the search results. Tap the name to connect. Once connected, the LED indicator will flash blue once every 5 seconds with a warning tone “Connected”.

Note:

- Automatic Re-pairing: The Bluetooth® earphones can remember the devices paired previously, and will attempt to pair with the last connected device (with Bluetooth® feature activated) automatically without going into pairing mode.

3. Clear Pairing History
- 1) If the earphones fail to pair with your Bluetooth® device, clear the pairing history by pressing and holding the Volume + and Volume - Buttons simultaneously when the earphones are on until the LED indicator flashes purple twice indicating clearing successfully. Then re-pair your Bluetooth® device as instructed in Pairing.

2) If you want to pair the earphones with another device when already paired, deactivate the Bluetooth® feature on the paired device or remove “TaoTronics TT-BH074” from the Bluetooth list.

TROUBLESHOOTING

Problem	Solutions
Fail to turn on the earphones	<ul style="list-style-type: none">• Make sure the earphones have enough power.• Charge the earphones.
Fail to charge the earphones	<ul style="list-style-type: none">• Check if the charging port is damaged• Charge using a new charging cable
Fail to pair with your Bluetooth® device	<ul style="list-style-type: none">• Make sure both the earphones and your device are turned on and the Bluetooth® feature on your device is activated.• Make sure the earphones and your device are next to each other or within 3 feet.• Closely follow the instructions in the “Pairing” section.• Try to reboot your device.
Cannot hear any music from the earphone after connecting with your Bluetooth® device	<ul style="list-style-type: none">• Make sure the music volume is at an audible level on both your device and earphone.• Make sure your device is playing music
No sound in one of the earphones	<ul style="list-style-type: none">• Make sure the channel setting on your device is correct.

What you hear on the earphone is not clear	<ul style="list-style-type: none">• During a call, adjust the volume on your device or on the earphone by pressing Volume + / -.• Check the signal strength of your device.• Make sure the device is within 33 feet (10 meters) of the earphone.• Clean the wire mesh under the tip.
What the other person hears is not clear	<ul style="list-style-type: none">• Move your device closer to the earphone.• Make sure your device is not near other wireless devices.• Check the signal strength of your device.• Try to reboot your device.
A call disconnects unexpectedly	<ul style="list-style-type: none">• Make sure the earphone is turned on and has enough power.• Make sure the device is within 33 feet (10 meters) of the earphone.• Check the signal strength of your device and make sure the battery is sufficiently charged.

CARE AND MAINTENANCE

- Battery care
- Be sure to turn off the earphones when it is not in use.

• Charge the earphones at least once every 6 months when not using for a long time.

• Make sure the battery is fully charged before putting the earphones away for storage.

To clean the earphones

Use a soft, dry cloth to wipe the surface carefully. Do not use liquids or sprays.

To clean the tip


Gently peel the tip from the end of the earpiece. Wash the tip with mild soap and rinse. Dry with a soft cloth. Be sure the tip is completely dry before reattaching to the earphones.

To clean the wire mesh under the tip

Gently peel the tip from the end of the earpiece. Lightly brush the mesh screen with a soft, dry cloth. Avoid pressing on the mesh, which could push debris through the mesh and into the earphones.

WARRANTY

TaoTronics headphones are covered by TaoTronics parts and labor warranty for 12 months from the date of its original purchase. If any problem occurs, please contact us by email at support@taotronics.com. We will instruct you on how to return the defective unit back to us for repair and replacement. We only provide warranty cover for products purchased from TaoTronics or TaoTronics authorized retailers and distributors. If you have purchased your unit from a different seller, please contact your seller directly for warranty cover and post-sales services.

 **Bluetooth®** **EN** The Bluetooth® word mark and logos are registered trademarks owned by the Bluetooth SIG, Inc. and any use of such marks by Sunvalleytek International Inc. is under license. Other trademarks and trade names are those of their respective owners.

NOTE: This equipment has been tested and found to comply with the limits for a Class B digital device, pursuant to part 15 of the FCC Rules. These limits are designed to provide reasonable protection against harmful interference in a residential installation. This equipment generates uses and can radiate radio frequency energy and, if not installed and used in accordance with the instructions, may cause harmful interference to radio communications. However, there is no guarantee that interference will not occur in a particular installation. If this equipment does cause harmful interference to radio or television reception, which can be determined by turning the equipment off and on, the user is encouraged to try to correct the interference by one or more of the following measures:

- Reorient or relocate the receiving antenna.

- Increase the separation between the equipment and receiver.

-Connect the equipment into an outlet on a circuit different from that to which the receiver is connected.

-Consult the dealer or an experienced radio/TV technician for help
- Changes or modifications not expressly approved by the party

responsible for compliance could void the user's authority to operate the equipment. This device complies with Part 15 of the FCC Rules. Operation is subject to the following two conditions: (1) this device may not cause harmful interference, and(2) this device must accept any interference received, including interference that may cause undesired operation.



WEEE Compliance

Correct Disposal of This Product (Waste Electrical & Electronic Equipment)

(Applicable in countries with separate collection systems)

This marking on the product, accessories or literature indicates that the product and its electronic accessories should not be disposed of with other household waste at the end of their working life. To prevent possible harm to the environment or human health from uncontrolled waste disposal, please separate these items from other types of waste and recycle them responsibly to promote the sustainable reuse of material resources. Household users should contact either the retailer where they purchased this product, or their local government office, for details of where and how they can take these items for environmentally safe recycling. Business users should contact their supplier and check the terms and conditions of the purchase contract. This product and its electronic accessories should not be mixed with other commercial wastes for disposal.

尺寸：60*75mm

折页

材质：128克铜版纸