

Pro TWS

无线立体声耳机

规范：

无线版本：	V5.0 + EDR
支持协议：	A2DP1.3 / HFP1.6 / HSP1.2 / AVRCP1.6/0113
蓝牙频率：	2.4GHz
蓝牙传输距离：	10 ~ 15m
电池容量：	30毫安
待机时间：	40小时
播放/通话时间：	2 ~ 2.5小时
充电箱容量：	260毫安时

产品说明书

1. 操作步骤

双边使用：打开充电盒的顶盖，然后按充电盒的多功能键打开电源。取出耳机。耳机自动打开耳机指示灯每5秒钟闪烁

一次，主耳朵呈红蓝色闪烁，副耳朵灭灯。耳机与手机配对；耳机红蓝交替闪烁表示需要将其与蓝牙配对。打开手机设置打开蓝牙搜索蓝牙名称“pro”并单击在手机上连接，连接后灭灯。

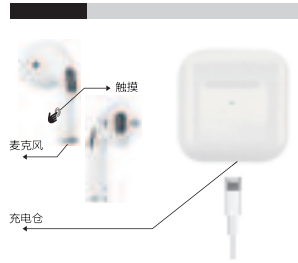
2. 开启和关闭充电器耳机的步骤

取出耳机自动开机，将耳机放入充电仓自动关闭，并在3分钟后自动关闭耳机已断开连接。充电仓：按多功能键打开，橙色指示灯始终亮着，按多功能键关闭，绿色指示灯熄灭。

3. 充电指示

给充电仓充电时，橙灯闪烁直至长亮，充满电时绿灯长亮熄灭，当charging bin为耳机充电时。充电仓橙色的灯常亮，耳机中的红灯一直常亮。闪动后，充电仓和耳机指示灯熄灭。

产品示意图



产品操作说明

音量加减	长按右边为加，长按左边为减
上下曲	双击右边为上一曲，双击左边为下一曲
播放/暂停/接听	单击正常
接电话	通话时点击按钮
拒接电话	按下2秒通话时间
静音功能	长按2秒第一声
耳机配对	耳机出仓自动配对

预防措施

1. 耳机应存放在干燥通风的地方环境，避免油、水、湿气和灰尘影响产品性能。
2. 避免使用刺激性、有机溶剂或含有这些成分的物品清洁耳机。
3. 耳机的使用应按规范正确使用，注意使用环境对耳机的影响耳机。为了确保连接顺畅，建议耳机与手机之间的距离在10米以内
4. 如果耳机无法连接或连接不良，请不要自行拆开耳机或配件，否则，不做任何保证。
5. 关于充电耳机。请使用我们公司的标准USB电缆或指定的充电电缆对电池进行充电耳机。
6. 为了确保正常使用，请确保充足的耳机电源。

Specification:

Wireless Version:	V5.0+EDR
Support Agreement:	A2DP1.3/HFP1.6/HSP1.2 /AVRCP1.6/0113
Bluetooth frequency:	2.4GHz
Bluetooth transmission distance:	10~15m
Battery capacity:	30mAh
Standby time:	40hours
Playing /talking time:	2~2.5hours
Charging box capacity:	260mAh

Product instructions

1. Operation steps

Bilateral use: Open the top cover of the charging box and press the multi-function key of the charging box to turn on. Take out the headphones. The headphones automatically turn on - - the

Once, the main ear flashed red and blue, and the auxiliary ear went out. Headphones and mobile phones Yes: The headset flashes red and blue alternately to indicate that it needs to be paired with Bluetooth. Turn on the phone Set to open Bluetooth, search for the Bluetooth name "pro" and click to connect on the phone. The light turns off after connection.

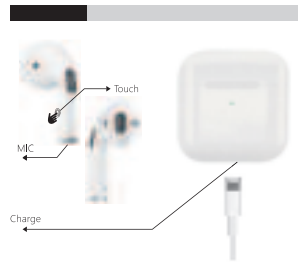
2. Steps to turn on and off the charger headset

Take out the earphones to automatically turn on, put the earphones into the charging compartment to automatically turn off, and the headset is automatically turned off after the dock is disconnected. Charging compartment: press the multi-function button to open. The orange indicator light is always on, press the multi-function button to turn off, and the green indicator light is off.

3. Charging instructions

When charging the charging compartment, the orange light flashes until it stays on, and when it is fully charged, the green light stays on. Turns off when the charging bin is charging the earphones. The orange light in the charging compartment is always on, The red light in the headset is always on. After flashing, The red light in the headset is always on. After flashing, the charging compartment and earphone indicator lights go out.

Product schematic diagram



Product operation instructions

The last song	Long press on the right to add, long press on the left to subtract.
The next	Double-click on the right for the previous song, double-click on the left for the next song
Play /Pause/Dialing	Click normal
Answer the phone	Click the button during a call
Refusing the phone	Press for 2 seconds to talk time
Sini function	Long press for 2 seconds to beep
Headphone pairing	The headset is automatically paired out of the warehouse

Precautions

1. The earphones should be stored in a dry and ventilated environment, to avoid oil, water, moisture and dust affecting product performance.
2. Avoid using stimulus, organic solvents or items containing these ingredients to clean the earphone.
3. The use of earphones should be correctly as per the specification, pay attention to use the influence of environment on the earphones.
4. If the earphones failed to connect or with poor connection, pls do not take apart the earphones or the accessories on your own, Otherwise, no warranty.
5. Regarding charging earphones. Pls use the standard usb cable or pointed charging cable from our company to charge the earphones.
6. In order to ensure normal use, please ensure sufficient power of the earphones.

FCC Warning:

This equipment has been tested and found to comply with the limits for a Class B digital device, pursuant to part 15 of the FCC Rules. These limits are designed to provide reasonable protection against harmful interference in a residential installation. This equipment generates, uses and can radiate radio frequency energy and, if not installed and used in accordance with the instructions, may cause harmful interference to radio communications. However, there is no guarantee that interference will not occur in a particular installation. If this equipment does cause harmful interference to radio or television reception, which can be determined by turning the equipment off and on, the user is encouraged to try to correct the interference by one or more of the following measures:

- Reorient or relocate the receiving antenna.
- Increase the separation between the equipment and receiver.
- Connect the equipment into an outlet on a circuit different from that to which the receiver is connected.
- Consult the dealer or an experienced radio/TV technician for help.

Caution: Any changes or modifications to this device not explicitly approved by manufacturer could void your authority to operate this equipment.

This device complies with part 15 of the FCC Rules. Operation is subject to the following two conditions:

(1) This device may not cause harmful interference, and (2) this device must accept any interference received, including interference that may cause undesired operation.

This equipment complies with FCC radiation exposure limits set forth for an uncontrolled environment. This equipment should be installed and operated with minimum distance 0cm between the radiator and your body.