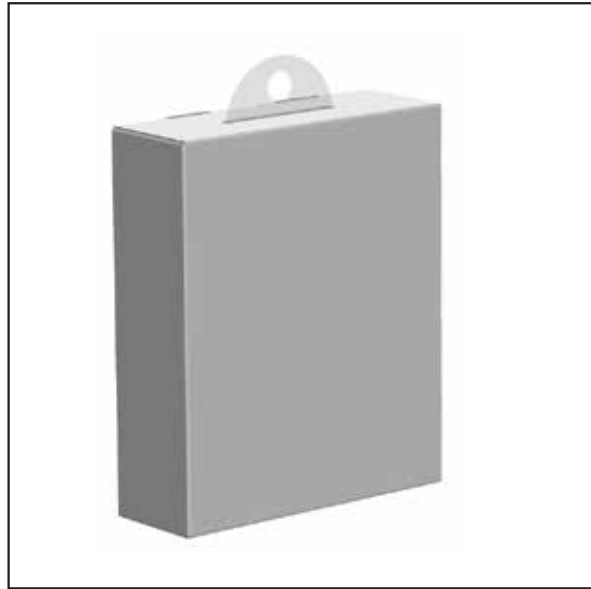




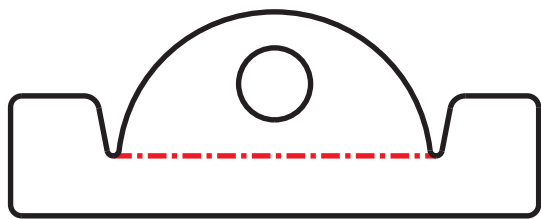
Cannice
100024300_Wireless Earphones With Charging Case
OPT01
10.29.2020



3.397"W x 5.474"H x 1.378"D

ATTENTION SUPPLIER:

The approval of this artwork for production also indicates that the final packaging dimensions have been approved by Walmart PD team member and UPC number is correct.



- Cut line
- - - Fold line
- Copy safe area
- Outside bleed
- Glue area

We'd love to hear from you. Scan with your Walmart app and let us know what you think.



The Fine Print

FCC Statement

This equipment has been tested and found to comply with the limits for a Class B digital device,pursuant to Part 15 of the FCC Rules. These limits are designed to provide reasonable protection against harmful interference in a residential installation. This equipment generates uses and can radiate radio frequency energy and, if not installed and used in accordance with the instructions, may cause harmful interference to radio communications.

However, there is no guarantee that interference will not occur in a particular installation. If this equipment does cause harmful interference to radio or television reception, which can be determined by turning the equipment off and on, the user is encouraged to try to correct the interference by one or more of the following measures:

- Reorient or relocate the receiving antenna.
- Increase the separation between the equipment and receiver.
- Connect the equipment into an outlet on a circuit different from that to which the receiver is connected.

The Fine Print

-- Consult the dealer or an experienced radio/TV technician for help.This device complies with part 15 of the FCC Rules. Operation is subject to the following two conditions:
(1) This device may not cause harmful interference, and (2) this device must accept any interference received, including interference that may cause undesired operation.

Warning:

Changes or modifications to this unit not expressly approved by the party responsible for compliance could void the user's authority to operate the equipment.

The device has been evaluated to meet general RF exposure requirement. The device can be used in portable exposure condition without restriction.

Need help? We're here for you every day from 7 a.m.-9 p.m. CST. Give us a call at 1-888-516-2630.

Produced for Walmart Inc.,
Bentonville,AR 72716

Ver.02 04/07/22

FCC ID :2ADTV-74914

onn.™

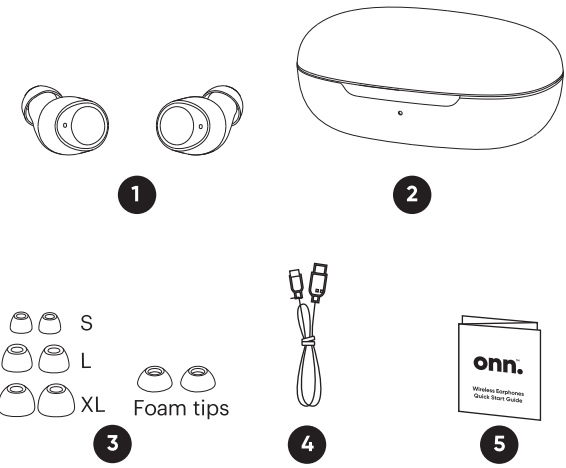
Wireless Earphones
Quick Start Guide

Get to Know Your Wireless Earbuds

- 1) Model: AAABLK100024300
- 2) Speaker Diameter: 7mm
- 3) Speaker Impedance: 32Ω±15%
- 4) Sensitivity: 102±3dB at 1KHz
- 5) Speaker Driver Rating Power: 2mW
- 6) Charging Cable: 23cm
- 7) 20 hours of total playtime (with charging case)
- 8) IPX5 waterproof rating applies to the earphones, not to the charging case.

What's in the Box?

Check to make sure you have everything below

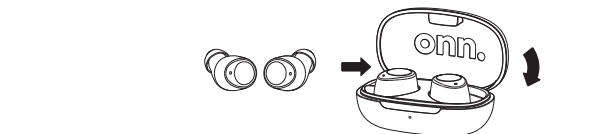


1. Earphones x1 pair
2. Charging case x1
3. Silicone eartips x4 pairs (M size installed), foam tips x1 pair
4. USB-C charging cable x1
5. Quick Start Guide

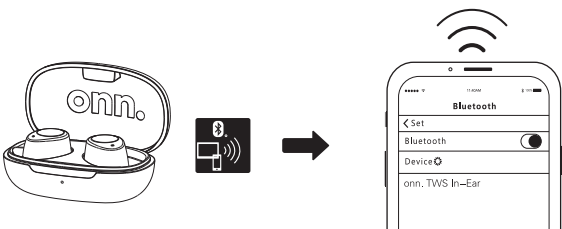
Let's Get Started!

First Time Setup

01



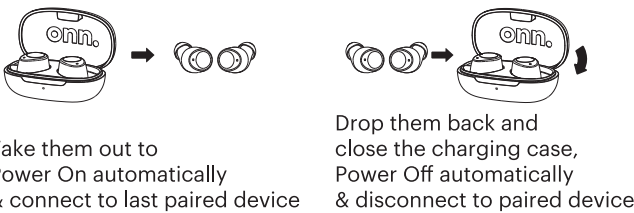
Step 1:
Drop earphones back into charging case for initial activation and close the charging case to fully charge.



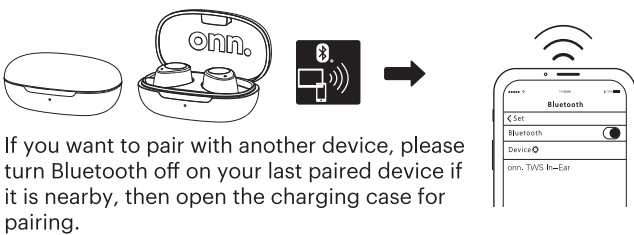
Step 2:
Open the charging case, earphones will be powered on and go into pairing mode automatically, connect to your device by selecting "onn. TWS In-Ear".

Power on / Power Off & Pairing

02



Tap & Hold 4 Secs Each Side for Power On/Off (If you are carrying the earphones without charging case)



Enjoy Your Music & Accepting a Call

03

In-ear detection
Both earphones will auto-pause when you remove them from your ears.

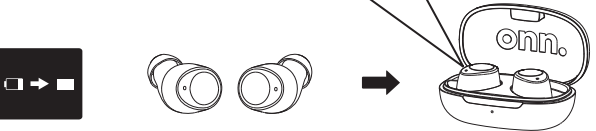


You can adjust volume through device

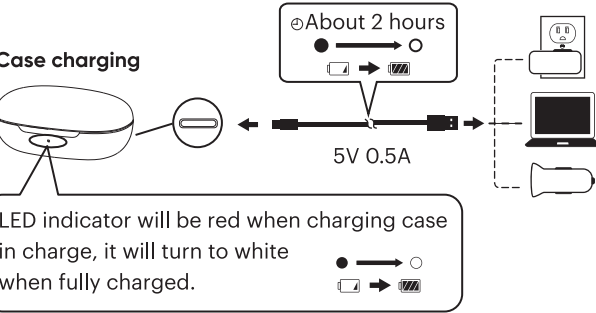
Charge Your Earphones

04

Earphones charging
LED indicator will be red when charging, it will be off when earphone is fully charged.



Case charging
LED indicator will be red when charging case in charge, it will turn to white when fully charged.



108mm
±1mm

95mm±1mm

571mm±1mm