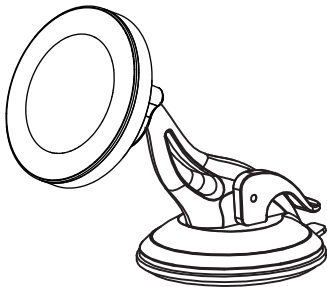
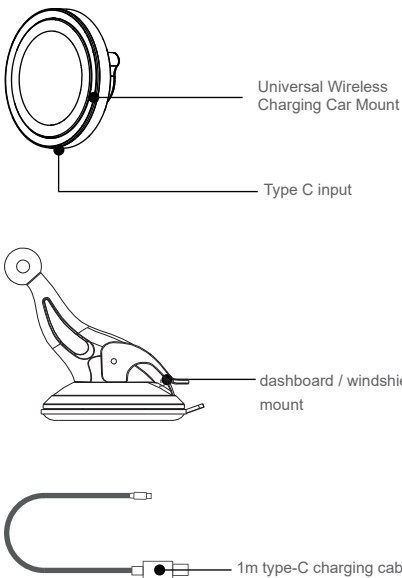


15W MAGNETIC WIRELESS CAR CHARGER MOUNT



X13+G75
User Manual



Specifications

- Input: DC 5V2A, 9V2.22A
- Output: DC 5V/1A, 7.5V/1A, 9V/1.12A, 9V/1.66A (5W, 7.5W, 10W, 15W)
- Transmission distance: ≤5mm
- Charging efficiency: 75% Max

Note

- Only for iPhone 13/12 Series (MagSafe Case Friendly): iPhone 13 / iPhone 12, iPhone 13 Pro /iPhone 12 Pro, iPhone 13 Pro Max / iPhone 12 Pro Max,iPhone 13 Mini / iPhone 12 Mini
- **Note:** Please use case with official MagSafe case or adaptive metal ring.Not applicable to other phone cases!
- Works with all Qi-enabled phones: Smartphones, iPhone, Google Pixel, Samsung Galaxy.
- **Note:** Please use adaptive metal ring for your Qi-enabled phones.
- Strong magnetic that can suction up your phone firmly without sliding even through the bumps and turns road.
- Easy to Install & 360° Rotation.
- Fast heat dissipation, safe driving.

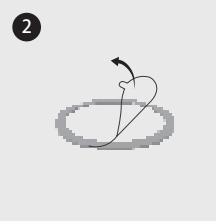
NOTE :

- 1.Please Use Case with Magsafe Or Use Magnet Ring with Case
- 2.Please Use QC3.0 Car Charger

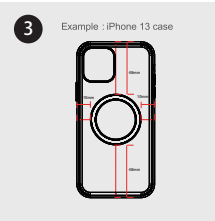
Attention : If you have not purchased a magsafe case, please install magnet ring on the back of the phone case.



Clean the phone case before installing



Remove the protective film and stickers



Please stick the magnetic ring in the middle of the phone case



Example: Apple's logo is in the middle of an iPhone 12/13 series

How to use and wireless charging

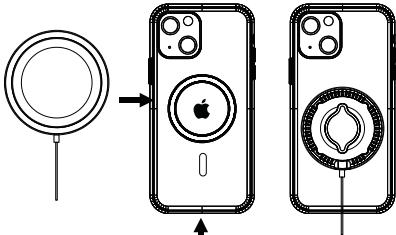
Unscrew the mounting ring, insert the ball through the mounting ring ,then position your preferred angle and tighten the ring to secure the mount.

Please tear off the protective film before using.



Work MagSafe® Compatible Devices

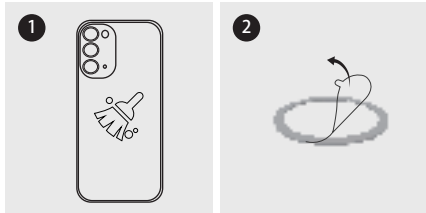
*Up to 7.5W wireless charging for iOS devices.



Compatible with official MagSafe case or Magnetic case.

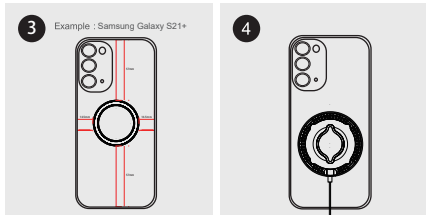
With Adaptive Metal Ring Applied to any Device.

*Up to 15W wireless charging for Android devices.

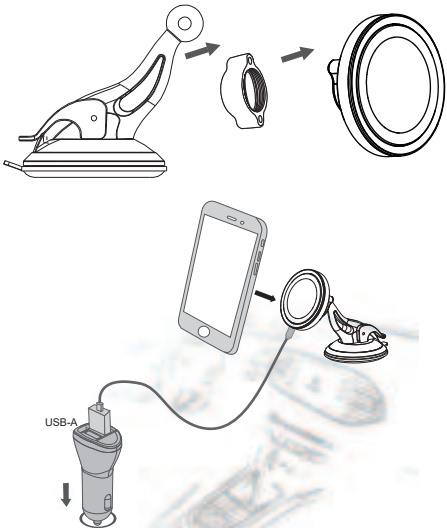


Clean the phone case before installing

Remove the protective film and stickers



Please stick the magnetic ring in the middle of the phone case



*QC3.0 Car Charger not included.

Telescopic arm car dashboard holder base

1.After repeated use many times, if the gel sticker surface dirt too much,and it can't attached the device strongly,this gel sticker can be cleaned by water and washing ,it can be repeated use after cleaning and dry.



This Gel sticker is optional

Notice:

- 1.This Gel sticker can be repeated use and washable.
- 2.Don't put this device into high temperature and heat place.



After repeated use many times, if the gel sticker surface dirt too much, and it cannot attached the device strongly, this gel sticker can be cleaned by water and washing supplies, it can be repeated use after cleaning.

This device complies with part 15 of the FCC Rules. Operation is subject to the following two conditions: (1) This device may not cause harmful interference, and (2) this device must accept any interference received, including interference that may cause undesired operation.

Any changes or modifications not expressly approved by the party responsible for compliance could void the user's authority to operate the equipment.

NOTE: This equipment has been tested and found to comply with the limits for a Class B digital device, pursuant to Part 15 of the FCC Rules. These limits are designed to provide reasonable protection against harmful interference in a residential installation. This equipment generates, uses and can radiate radio frequency energy and, if not installed and used in accordance with the instructions, may cause harmful interference to radio communications. However, there is no guarantee that interference will not occur in a particular installation.

If this equipment does cause harmful interference to radio or television reception, which can be determined by turning the equipment off and on, the user is encouraged to try to correct the interference by one or more of the following measures:

- Reorient or relocate the receiving antenna.
- Increase the separation between the equipment and receiver.
- Connect the equipment into an outlet on a circuit different from that to which the receiver is connected.
- Consult the dealer or an experienced radio/TV technician for help.

FCC Radiation Exposure Statement
This equipment complies with FCC radiation exposure limits set forth for an uncontrolled environment. This equipment should be installed and operated with a minimum distance of 20 cm between the radiator and your body.

FCC ID: 2A6IU-X13