
Introduction

Use the MC7004, MC7094 and MC7095 phone to make phone calls, set up speed dials, keep track of calls, and send text messages. Your wireless service provider may also provide other services such as voice mail, call forwarding, and caller ID.

Also use the integrated phone to connect to an ISP or work network in order to browse the Web and read e-mail. Connect to the Internet or work network over GPRS (MC7004 and MC7094) or CDMA (MC7095) using Cellular Line, or using the modem specified by the mobile operator. For more information, or to customize the EDA phone by changing phone settings, see the *MC70 Integrator Guide*.

Accessing the Phone Keypad

Access the keypad regardless of the program in use. Applications on the EDA can be in use during a call.

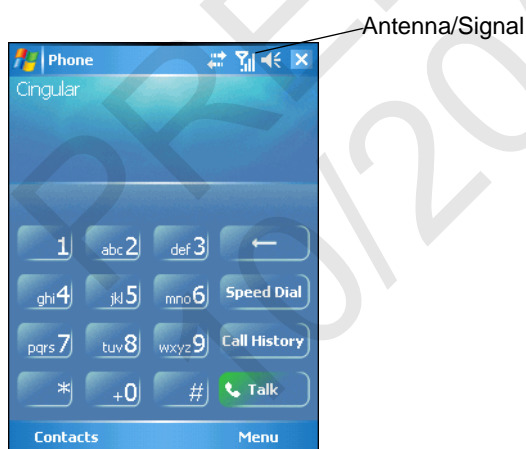


Figure 4-1 Phone Keypads

✓ **NOTE** Keypads vary depending on services and the state of the phone. For example, place calls on hold and use **Swap** to switch active calls on hold. (See [Three-way or Conference Calling on page 4-14.](#))

To access the phone keypad tap **Start > Phone** or press the green phone key on the EDA's keypad.

To receive calls when the EDA is suspended, leave the phone radio turned on and ensure the EDA is set to wake with any key.

Making a Call Using the Keypad

Dial phone calls from the phone keypad using speed dial or from call history. The most direct method is using the phone keypad.

To make a call using the phone keypad:

1. Tap **Start** > **Phone** or press the green phone key on the EDA's keypad.
2. From the Phone keypad, tap the number to call.
3. Tap **Talk**.
4. Tap **End** to stop dialing or end the call.

✓ **NOTE** Alternatively, use the green and red phone keys on the EDA keypad to dial (green) and end (red) calls.

Turning the Phone On and Off

With AKU 1.1 (Flight Mode)

You can turn the phone on and off while keeping the EDA turned on. The phone is turned off when it is in flight mode.

To turn the phone on, tap the **Signal** icon > **Turn off flight mode**.

To turn the phone off, tap the **Signal** icon > **Turn on flight mode**.

✓ **NOTE** To receive calls when your device is turned off, leave the phone turned on.

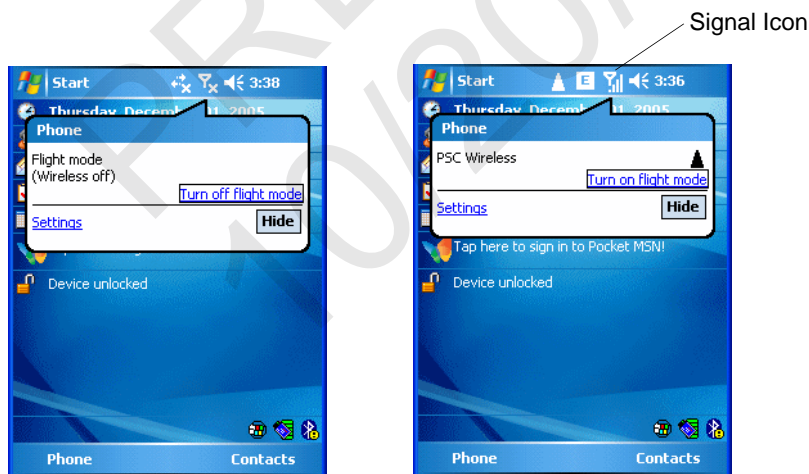


Figure 4-2 Turning Flight Mode On and Off

With AKU 2.2 or Higher

Windows Mobile 5.0 devices with AKU 2.2 or higher include **Wireless Manager**, which provides a simple method of enabling and disabling the phone.

To open **Wireless Manager**, tap the **Connectivity** icon.

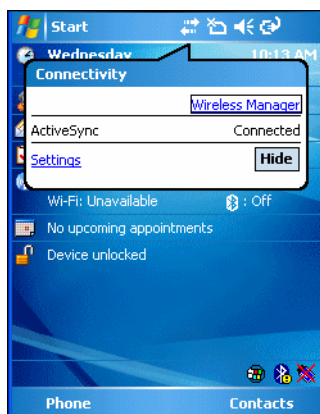


Figure 4-3 Opening Wireless Manager

Select **Wireless Manager**. The **Wireless Manager** window appears.



Figure 4-4 Wireless Manager

To turn on or off the phone tap and hold its blue bar, then select **On** or **Off**.

To configure settings for a connection, tap **Menu > Phone Settings**.

✓ **NOTE** To receive calls when your device is turned off, leave the phone turned on.

Answering a Call

A dialog box appears on the EDA when it receives an incoming call. If the phone is set to ring, a ring tone sounds. Answer or ignore the incoming call.

To answer an incoming call tap **Answer** on the **Phone > Incoming...** dialog or press the green phone key on the EDA keypad.

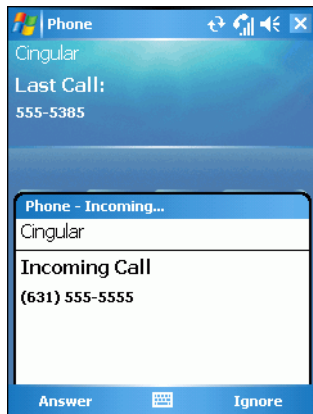


Figure 4-5 Incoming Call

To ignore the incoming call tap **Ignore**. This may send the caller to voice mail, depending on the service provider. Otherwise, this presents *Busy* to the calling party.

To end the call tap **End** or press the red phone key on the EDA keypad.

Audio Modes

The EDA offers three audio modes to use during phone calls:

- **Speaker Mode:** Use the EDA as if on speaker phone. Tap the **Speaker On** button to activate this mode.
- **Receiver/Handset Mode:** Switches audio to the speaker at the top front of the EDA, so you can use the EDA as a handset. To select this mode, tap **Speaker Off**.
- **Headset Mode:** Connect a headset to the headset jack to automatically switch audio to the headset.

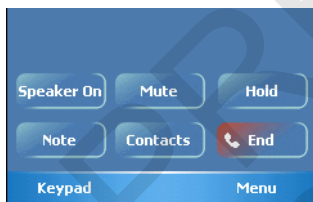


Figure 4-6 Speaker Button

Incoming Call Features

- If you receive a call while in a call, tap **Wait** to place the call in call waiting.
- You can use other programs on the EDA during a call. To switch back to Phone, tap **Talk** or tap **Start > Phone**. Tap **End** to end the call.
- If a caller isn't in your contact list, create a contact during the call or from Call History by tapping **Menu > Save to Contacts**.
- To terminate a call when a second call comes in and answer the waiting call, tap **End** on the Phone keypad to disconnect the active call, then tap **Answer** or press the **Send** key to answer the waiting call.
- To hold the current call and answer a waiting call, tap **Answer** or press the **Send** key to place the current call on hold and answer the incoming call.

- To put a call on hold to call another number or answer an incoming call, tap **Hold**. To move from one call to another, tap **Swap**.

Muting a Call

During a call, you can mute the microphone so you can hear the person on the line but he or she cannot hear conversation from the microphone. This is useful when there is conversation or background noise on your end.

To mute or unmute a call:

1. Tap **Start > Phone** or press the green phone key on the EDA's keypad.
2. Tap **Mute** on the display to mute audio. The **Mute** icon appears.

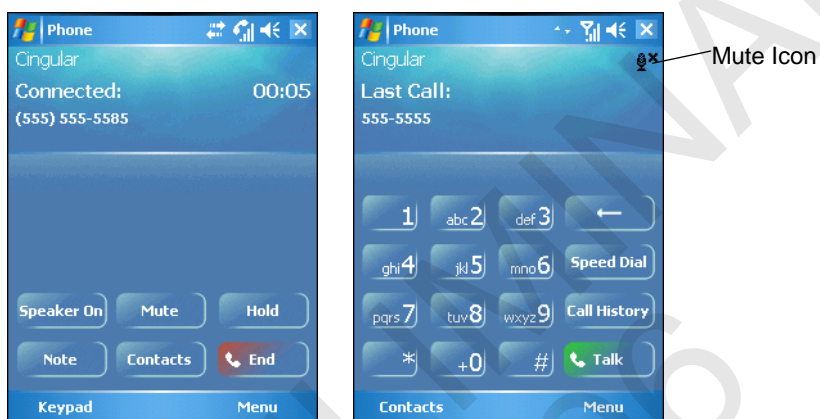


Figure 4-7 Mute Button and Icon

Taking Notes

To create a note during a call, tap **Note** on the display, then enter the note. For more information about creating notes see the Windows On-Device Help.

To access a note created during a call:

1. Tap **Start > Phone** or press the green phone key on the EDA's keypad.
2. From the Phone keypad, tap **Call History**.
3. Tap and hold the number or the **Note** icon for the phone call entry containing the note.

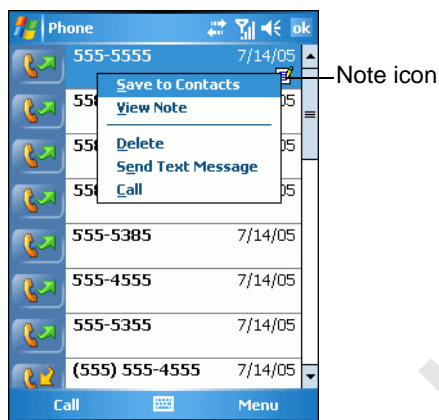


Figure 4-8 Call History - Notes Menu

4. Tap **View Note**.

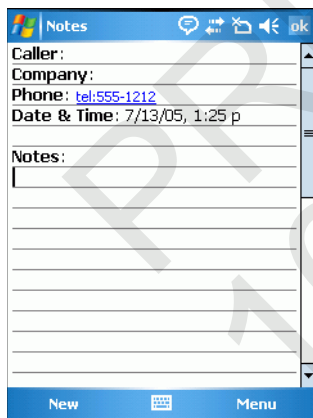


Figure 4-9 Call History - Notes

5. Tap **ok** to exit.



NOTE Also access notes directly from the Notes application by tapping **Start > Notes**.

Using Speed Dial

Create speed dial numbers to dial frequently called numbers with a single tap. Before creating a speed dial entry, ensure the phone number exists in Contacts.

Adding a Speed Dial Entry

To add a speed dial entry from the phone keypad:

1. Ensure the contact and phone number are in the Contacts list.
2. Tap **Start > Phone** or press the green phone key on the EDA's keypad.
3. Tap **Speed Dial > Menu > New**.

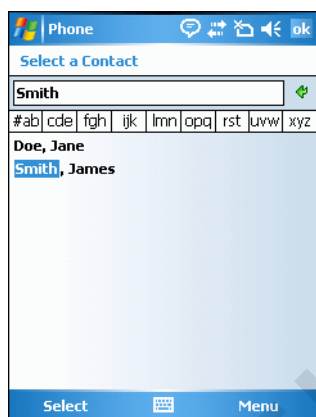


Figure 4-10 *Contacts*

4. Tap the desired contact name and number in the list.

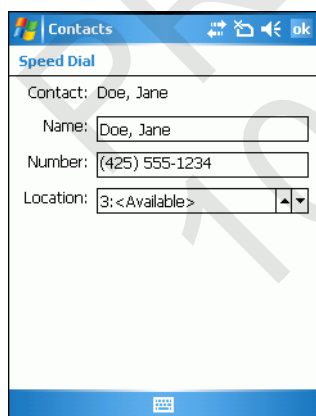


Figure 4-11 *Speed Dial Contact Location*

5. In the **Location** field, tap the up/down arrows to select an available location to assign as the new speed dial entry. The first speed dial location is reserved for voice mail.
6. Tap **ok** to add the contact to the speed dial list.



Figure 4-12 *Speed Dial Contact List*

7. Tap **ok** to exit the **Speed Dial Contact List**.

To add a speed dial entry from the **Contacts** window:

1. Tap **Start > Contacts**.

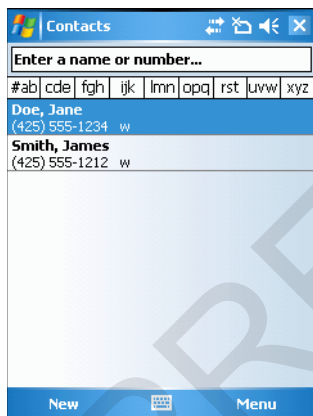


Figure 4-13 *Contacts*

2. Tap and hold the contact name.

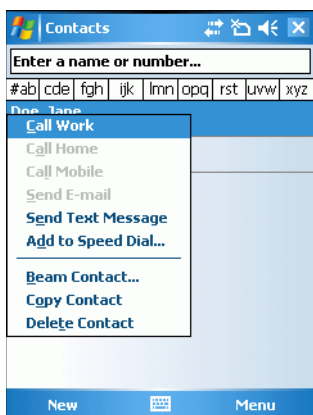


Figure 4-14 *Contacts Menu*

3. Tap **Add to Speed Dial**.

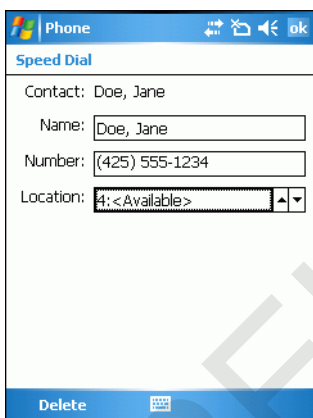


Figure 4-15 *Speed Dial Contact Location*

4. Tap the up/down arrows to select an available location to assign as the new speed dial entry. The first speed dial location is reserved for voice mail.
5. Tap **ok**.

Editing a Speed Dial Entry

1. Tap **Start > Phone** or press the green phone key on the EDA's keypad.
2. Tap **Speed Dial**.

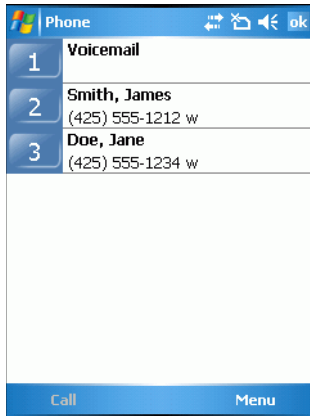


Figure 4-16 *Speed Dial Contact List*

3. Tap and hold the contact name.

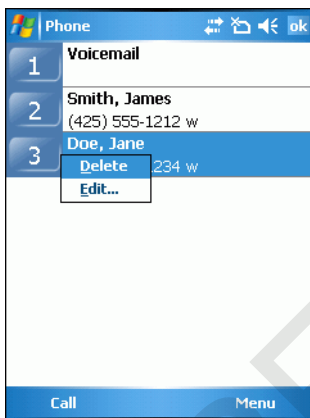


Figure 4-17 *Speed Dial Delete Menu*

4. Tap **Edit...**
5. Change the name, phone number, or location information.
6. Tap **ok**.

✓ **NOTE** Editing names and phone numbers in **Speed Dial** does not alter contact information in **Contacts (Start > Contacts)**.

Deleting a Speed Dial Entry

1. Tap **Start > Phone** or press the green phone key on the EDA's keypad.
2. Tap **Speed Dial**.
3. Tap and hold the contact name.

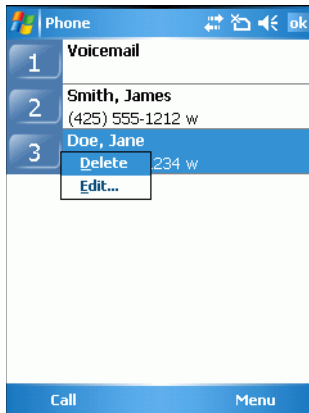


Figure 4-18 *Speed Dial Delete Menu*

4. Tap **Delete**.
5. Tap **Yes** to confirm permanently deleting the speed dial entry.

✓ **NOTE** Deleting names and phone numbers in *Speed Dial* does not delete the contact information in **Contacts** (**Start > Contacts**).

Making a Speed Dial Call

Use Speed Dial to call someone saved in the speed dial directory.

To make a speed dial call:

1. Tap **Start > Phone** or press the green phone key on the EDA's keypad.
2. From the Phone keypad, tap and hold the speed dial location number assigned to a contact. (To dial a one-digit speed dial location number, tap and hold the speed dial number. To dial a two-digit speed dial location number, tap the first digit and then tap and hold the second digit.)

or

From the Phone keypad, tap **Speed Dial** and tap the speed dial location number of the desired contact in the list.

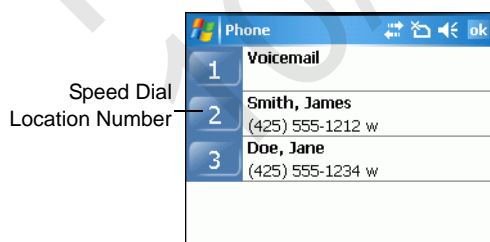





Figure 4-19 *Speed Dial Contact List*

3. To stop dialing or end the call, tap **End** or press the red phone key on the EDA keypad.

Using Call History

Use Call History to call someone who was recently called, or recently called in. Call History provides the time and duration of all incoming, outgoing, and missed calls. It also provides a summary of total calls and easy access to notes taken during a call. [Table 4-1](#) lists the call history icons that appear in the **Call History** window.

Table 4-1 *Call History Icons*

Icon	Description
	This icon appears next to the contact information for all outgoing calls.
	This icon appears next to the contact information for all incoming calls.
	This icon appears next to the contact information for all missed calls.

To make a call using call history:

1. Tap **Start > Phone** or press the green phone key on the EDA's keypad.
2. From the Phone keypad, tap **Call History**.

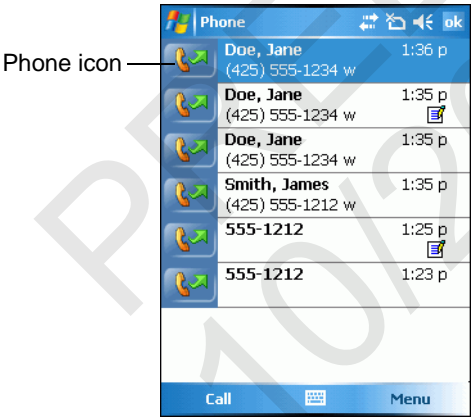


Figure 4-20 *Call History*

3. Tap the phone icon next to the number to begin dialing and return to the phone keypad.
4. Tap **End** or press the red phone key on the EDA keypad to stop dialing or end the call.

Managing Call History

Change views, reset the call timer, and delete calls to manage the calls stored in Call History.

Changing the Call History View

1. Tap **Start** > **Phone** or press the green phone key on the EDA's keypad to display the Phone keypad.
2. From the Phone keypad, tap **Call History**.
3. Tap **Menu** > **Filter** to show the menu.

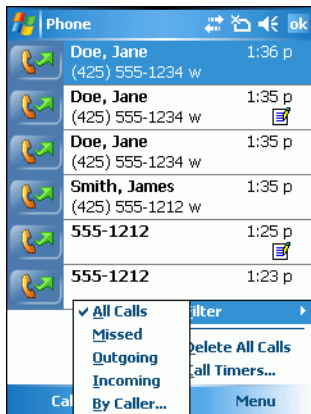


Figure 4-21 Call History - All Calls/Show Menu

4. Select a view type from the menu to display only missed calls, outgoing calls, incoming calls, or calls listed alphabetically by caller name.
5. Tap **ok** to exit the **Call History** window.

Resetting the Recent Calls Counter

1. Tap **Start** > **Phone** or press the green phone key on the EDA's keypad to display the Phone keypad.
2. From the Phone keypad, tap **Call History**.
3. Tap **Menu**.

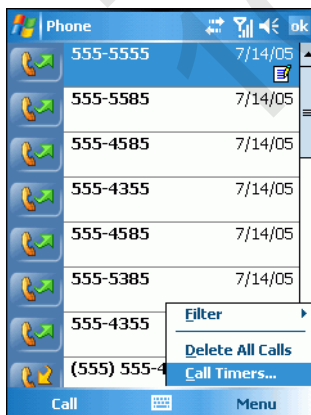


Figure 4-22 Call History - Tools Menu

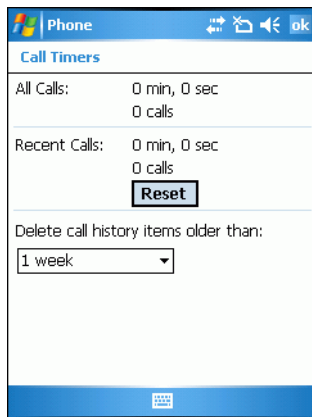
4. Select **Call Timers...** .

Figure 4-23 Call History - Call Timers

5. Tap **Reset**. (The **All Calls**: counter cannot be reset.)

6. Tap **ok** to exit the **Call Timers** window.

Deleting Call History Items by Call Date

1. Tap **Start > Phone** or press the green phone key on the EDA's keypad to display the Phone keypad.
2. From the Phone keypad, tap **Call History**.
3. Tap **Menu > Call Timers...** .

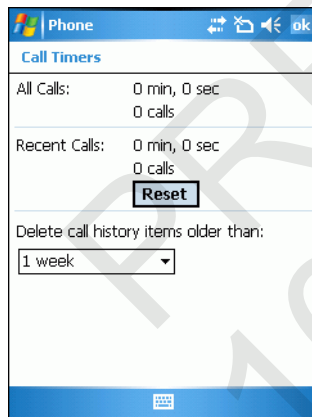


Figure 4-24 Call History - Call Timers

4. In the **Delete call history items older than:** drop-down list select a time period on which to base deletion of stored items.
5. Tap **ok** to exit the **Call Timers** window.

Deleting All Call History Items

1. Tap **Start > Phone** or press the green phone key on the EDA's keypad to display the Phone keypad.
2. From the Phone keypad, tap **Call History**.
3. Tap **Menu**.

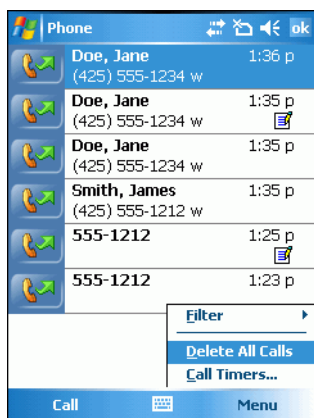


Figure 4-25 Call History - Tools Menu

4. Select *Delete all calls*.

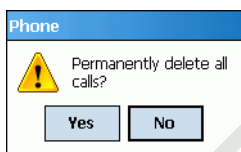


Figure 4-26 Call History - Delete All Dialog

5. Tap **Yes**.
6. Tap **ok** to exit the **Call History** window.

Viewing Call Status

1. Tap **Start > Phone** or press the green phone key on the EDA's keypad to display the Phone keypad.
2. From the Phone keypad, tap **Call History**.

3. Tap an entry in the list to see the date, time, and duration of a call.

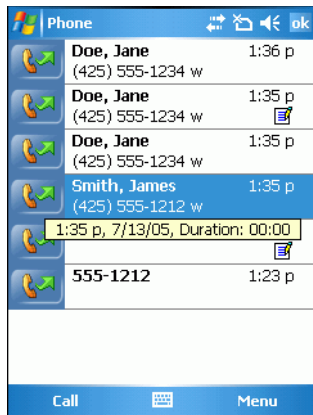


Figure 4-27 Call History - Detail

✓ **NOTE** When more than one call is on the phone line, only the duration of the first call is recorded.

4. Tap **ok** to exit.

Using the Call History Menu

Use the Call History menu to dial voice mail, access the Activation Wizard, save to contacts, view a note, delete a listing, send an SMS, and make a call.

1. Tap **Start > Phone** or press the green phone key on the EDA's keypad to display the Phone keypad.
2. From the Phone keypad, tap **Call History**.
3. Tap and hold an item in the list.

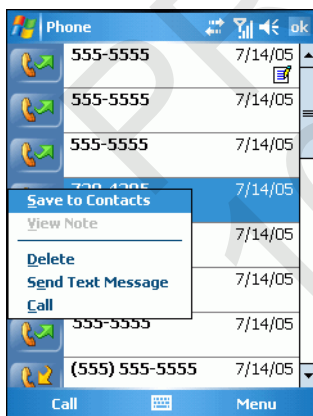


Figure 4-28 Call History - Menu

4. Select an applicable item from the menu, as needed.
5. Depending on the item selected, the appropriate window displays. For example, select **Send SMS** to display the **Inbox** window.
6. Tap **ok** to exit the **Call History** window.

Using Contacts

Use Contacts to make a call without looking up or entering the phone number.

To make a call from Contacts:

1. Tap **Start > Contacts**.
2. From the contact list, tap and hold the contact name.

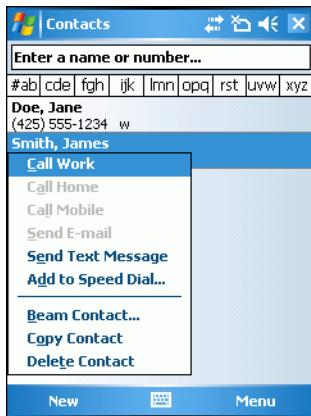


Figure 4-29 *Contacts Menu*

3. Tap **Call Work**.



NOTE To make a call from an open contact, tap the number to call. See On-Device Help for more information about Contacts.

Swapping Calls

To move between two or more phone calls:

1. Tap **Start > Phone** or press the green phone key on the EDA's keypad to display the Phone keypad.
2. Enter the first phone number and press **Talk**. When the call connects, **Hold** appears on the keypad.

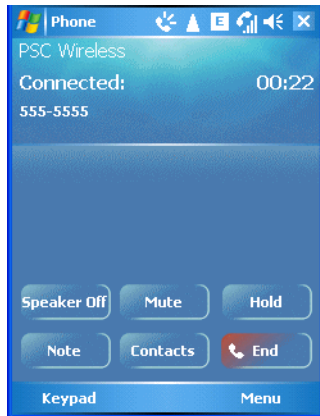


Figure 4-30 *Call Swapping - Hold*

3. Tap **Hold** to place the first number on hold.
4. Enter the second number and tap **Talk**.

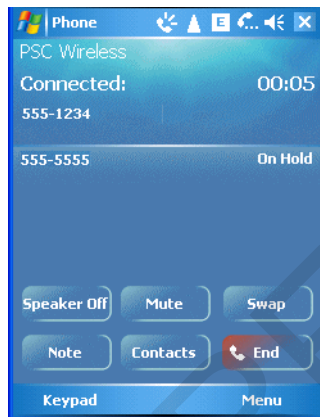


Figure 4-31 *Call Conferencing - Conferencing*

5. Tap **Swap** to move from one call to the other.
6. Tap **End** or press the red phone key on the EDA keypad to end each call.

Conference Calling

To create a conference phone session with two or more people and the initiator:

1. Tap **Start > Phone** or press the green phone key on the EDA's keypad to display the Phone keypad.
2. Enter the first phone number and press **Talk**. When the call connects, **Hold** appears on the keypad.

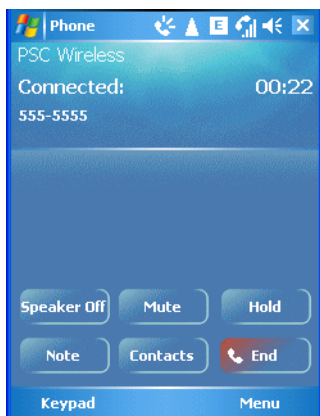


Figure 4-32 *Call Swapping - Hold*

3. Tap **Hold** to place the first number on hold.
4. Enter the second number and tap **Talk**.
5. Tap **Hold** to place the second number on hold.
6. Tap **Menu** > **Conference** to place the two numbers in conference mode.

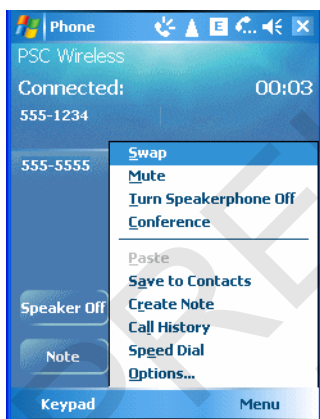


Figure 4-33 *Creating a Conference Call*

7. Tap **End** or press the red phone key on the EDA keypad to end the conference call.

✓ **NOTE** To speak privately with one party during a conference call, tap **Menu** > **Private**. To include all parties again, tap **Menu** > **Conference**.

Text Messaging

Use the **Text Messages** window to send and receive text messages to and from mobile phones. The text can contain words, numbers, or an alphanumeric combination no longer than 160 characters.

Short text messages delivered over mobile networks transmit from the sending EDA, are stored in a central short message center, then forwarded to the destination mobile device. If the recipient is not available, the

short message is stored and can be sent later. With the PCS networks based on GSM, CDMA, and TDMA technologies supporting SMS, SMS is a universal mobile data service.

Sending a Message

To send a message:

1. Tap **Start > Phone** or press the green phone key on the EDA's keypad to display the Phone keypad.
2. Tap **Contacts**.
3. Tap and hold on a contact and select **Send Text Message**.

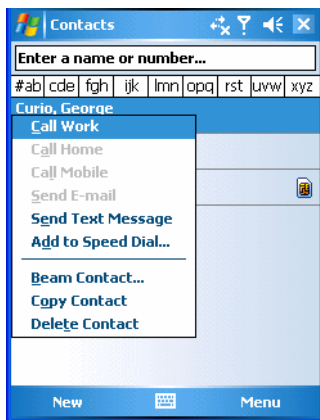


Figure 4-34 Tools Menu

4. On the **Text Messages** window, enter your message.

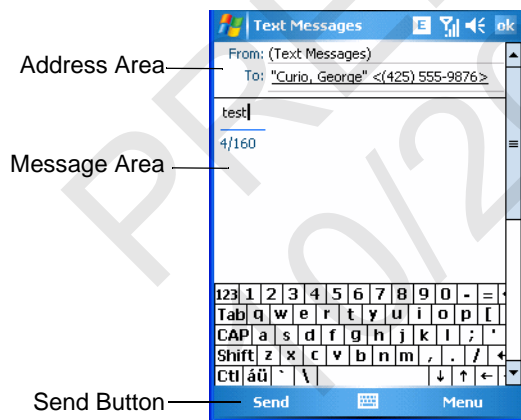


Figure 4-35 Text Messages Window

5. Tap **Send** to send the message.