

## INCLUDED ELEMENTS

A. MagicMount™ Charge Elite Magnetic Wireless Charging Mount with Integrated Cable Management System

B. Rotating Mounting Arm

D. Adhesive Mount

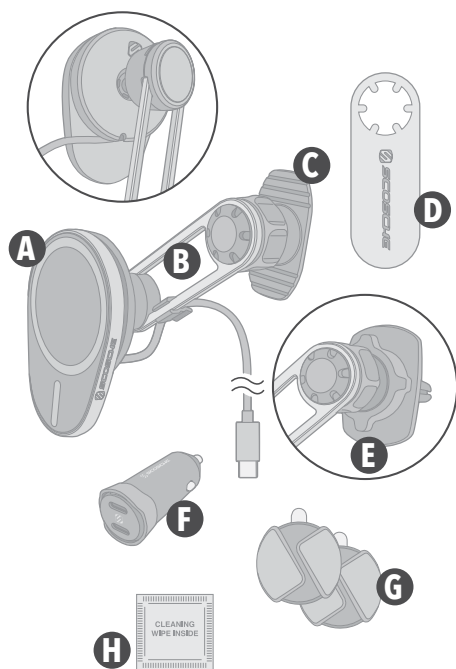
C. Mounting Arm Removal Tool

E. Vent Mount

F. Car Adapter

G. Cable Clips (2)

H. Cleaning Wipe



## DEVICE SETUP

SECTION A - iPhone® Setup

SECTION B - Dash Mount

SECTION C - Monitor Mount

SECTION D - Vent Mount

SECTION E - Integrated Cable Management System

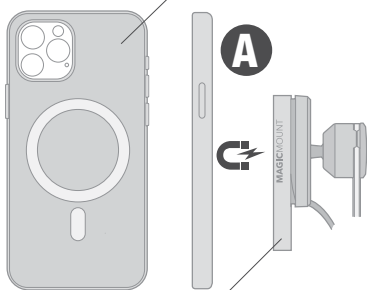
SECTION F - Connection & Charging

SECTION G - Mount Adjustment

### SECTION A

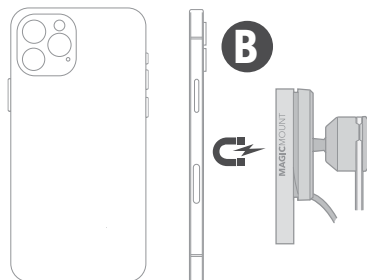
MagSafe Case

A. For iPhone 12 and later, cases must include embedded magnets that are designed to work with MagSafe™ accessories for secure attachment.



MagicMount Charge Elite

B. iPhone 12 and later without a case can be directly attached to the MagicMount Charge Elite.

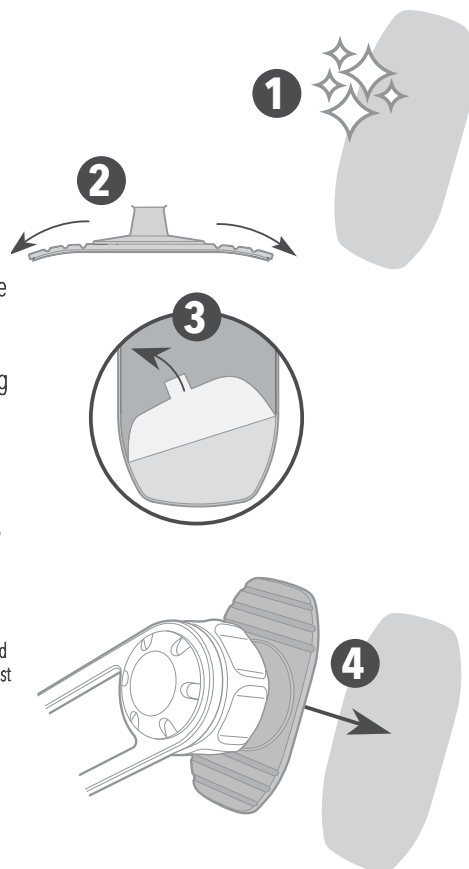


## SECTION B

### Adhesive Dash Mount

1. Thoroughly clean desired mounting surface using cleaning wipe\*.
2. Firmly bend Flex Tabs before attaching to a curved surface.
3. Peel off protective backing and attach to desired mounting surface.
4. For best adhesion, firmly hold the mount against the dash for 30-60 seconds. Ultimate bond strength of the tape will be achieved after 24 hours.

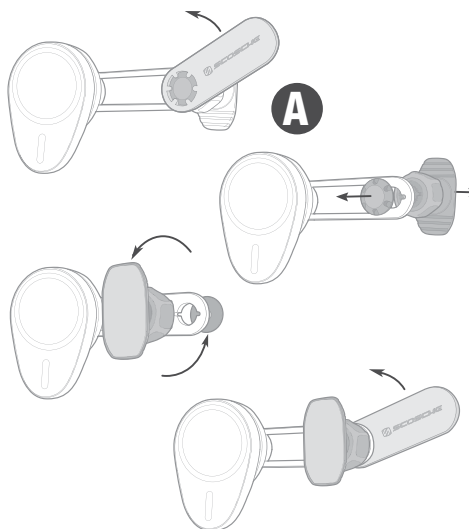
\*Supplied cleaning wipe may cause discoloration of certain plastics, vinyls and painted surfaces. It is recommended to test in an inconspicuous area first.



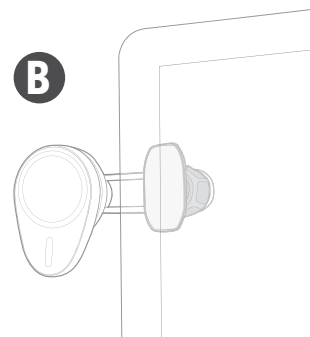
## SECTION C

### Monitor Mount

Use the included tool to remove and reverse the adhesive mounting base, so that the adhesive side faces the same direction as the phone mount and the monitor screen (A).



Follow the steps in Section B to attach the adhesive base to the rear of the monitor (B).

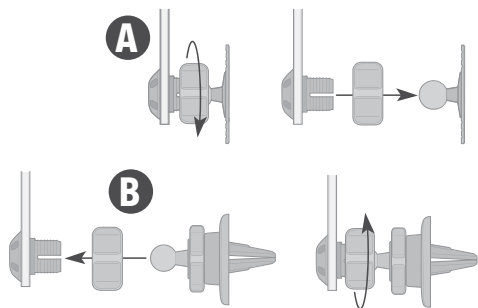


## SECTION D

### Vent Mount

#### Assembly

Remove the mounting arm from the adhesive mount (A), and assemble with the vent mount (B).

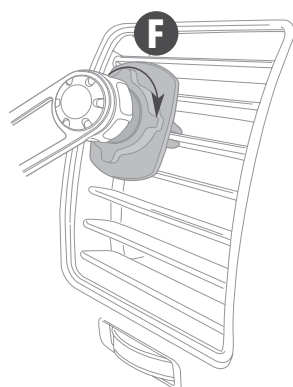
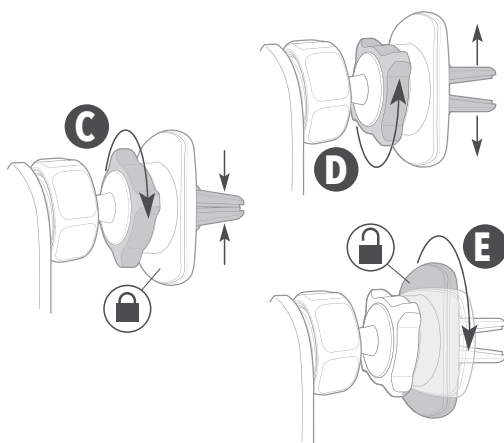


#### Adjustment

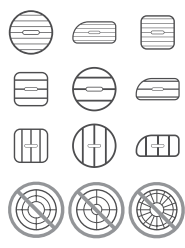
Tighten the collar to close the vent clips, lock the support skirt, and lock the mount onto the vent (C & F).

Loosen the collar to open the vent clips (D).

**Note:** Loosening the collar also unlocks the support skirt, allowing it to rotate in relation to the vent clips (E). This allows the vent clips to be installed on different vent styles (horizontal, vertical, angled), while the support skirt is positioned independently. It is recommended that the support skirt be installed upright (vertically) for maximum support.



**Note:** Works with many vent designs. Not compatible with curved or circular vents.



#### Installation

With the vent clips open and in the desired position, place the vent clips on the vent, and tighten the collar to secure the mount (F).

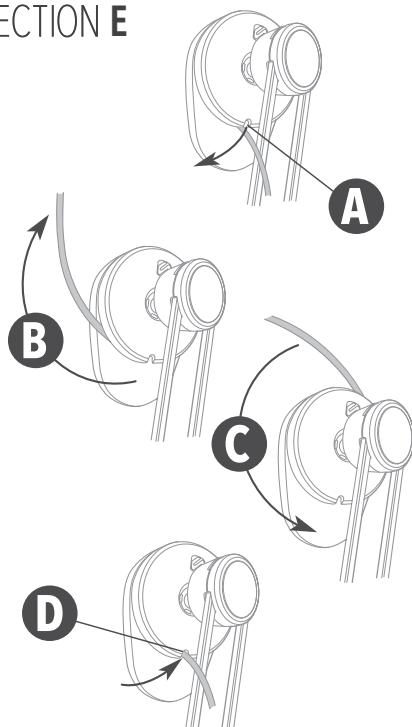
## SECTION E

### Integrated Cable Management System

1. Release the cable from the output slot (A).
2. Manually unwind the cable from the internal storage reel (B), or wind the cable onto the storage reel (C) to adjust the length of exposed cable.

Minimum Length: 1 ft  
Maximum Length: 5 ft.

3. At the desired length, replace the cable in the output slot (D).



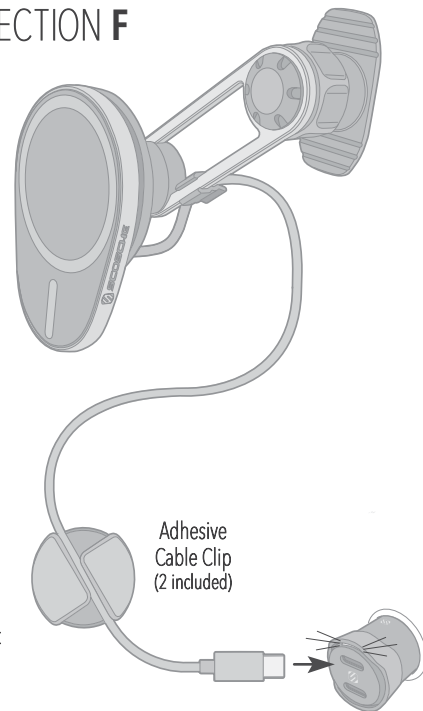
## SECTION F

Plug included car adapter into vehicle's 12V socket, and route wireless charger's USB-C power cable to car adapter.

**Qi2 Wireless Charging Head\***  
Input: 5V===3A / 9V===2.22A  
Output: 15W

\*Actual charge rates may vary depending on device software and environmental conditions.

**Car Adapter**  
Input: 12-24V===7A  
Output: 5V===3A / 9V===2.22A per port

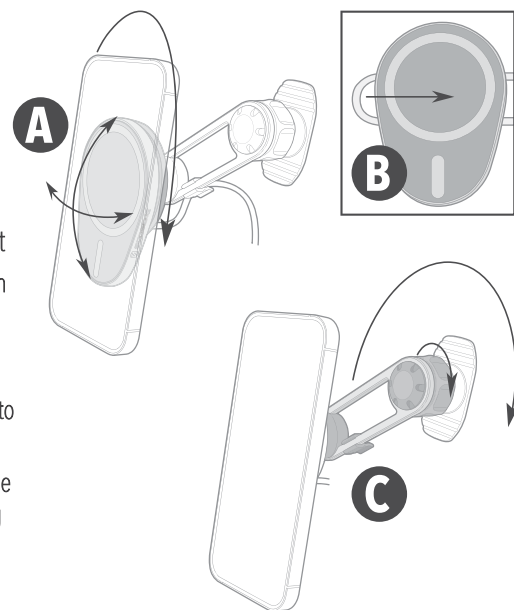


## SECTION G

### Mount Adjustment

Dual ball-joint design allows charge head to tilt and rotate (A). Charge head slides along mounting arm to adjust reach (B).

Mounting arm may be rotated by loosening the collar at the mounting base (C).



**MagicMount Charge Elite** How-To Video...



**SCOSCHE**

Scosche Industries  
1550 Pacific Avenue  
Oxnard, California 93033  
Phone: 800-363-4490 x1 / 805-486-4450 x1  
[www.scosche.com](http://www.scosche.com)  
©2024 Scosche Industries

Scosche & MagicMount are trademarks of Scosche Industries. Other marks or brands are the property of their respective owners. Devices and or appearance may vary.

Designed in Oxnard, California

SI MEQMSRM 9/24