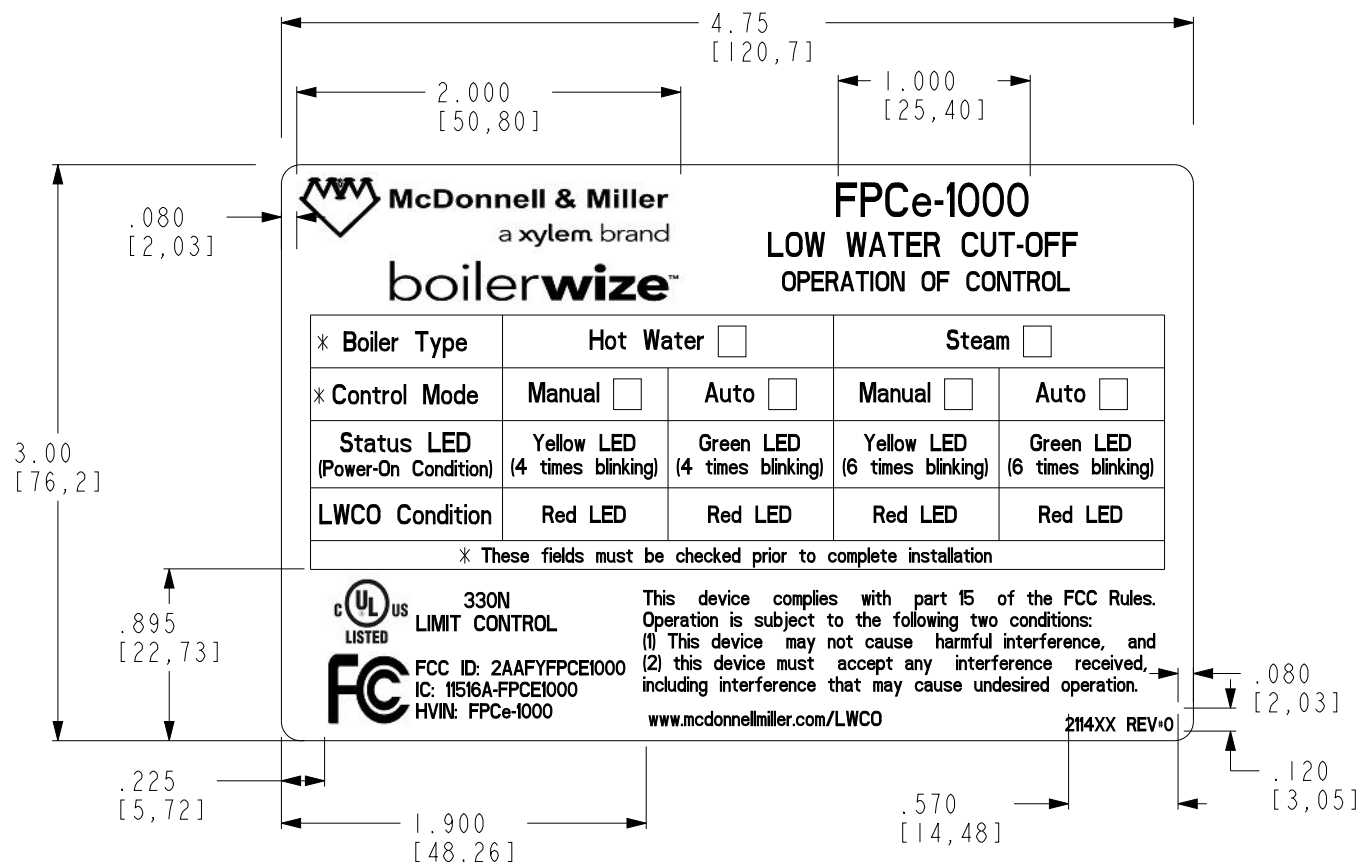


211416_FPCE1000

MATERIAL NOTE:

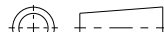

1. MATERIAL-.002" MATTE SILVER POLYESTER WITH ADHESIVE AND A.001" CLEAR POLYESTER OVERLAMINATE.
2. COPY COLOR - BLACK
3. BACKGROUND COLOR - COLOR OF THE MATERIAL



NOTES:

1. LABEL ARTWORK TO BE APPROVED BY AWS MG BEFORE BEGINNING NAMEPLATE PRODUCTION.
2. SEE AWS MG ADVERTISING/MARKETING DEPARTMENT FOR LATEST ARTWORK.
3. SEE AWS MG PRODUCT ENGINEERING STANDARD PE 2-1, FIG. UL-9
4. SEE ENGINEERING SPECIFICATION FOR UL CONTROL CODE.
5. SEE ENGINEERING SPECIFICATION FOR UL PRODUCT IDENTITY.

ITEM	QTY.	PART NO.	DESCRIPTION
1	0.001	245336	BASE STOCK-SILVER MATTE
2	0.001	245200	LAMINANT - CLEAR
3	0.001	245195	PRINT FOIL-BLACK

G						TITLE LABEL-OPERATION CONTROL FPCe-1000					DWG. NO. 211416_FPCE1000		
						MAT'L SEE BOM							
						DWN.	DATE.	CKD.	DATE.	SCALE	"THIS DRAWING AND THE INFORMATION DEPICTED THEREIN IS THE PROPERTY OF XYLEM. COPIES ARE ISSUED IN STRICT CONFIDENCE AND SHALL NOT BE REPRODUCED OR COPIED, OR USED AS THE BASIS FOR THE MANUFACTURE OR SALE OF PRODUCTS WITHOUT PRIOR WRITTEN PERMISSION OF XYLEM".		ALL COMPONENTS TO BE MARKED WITH COUNTRY OF ORIGIN PER AWS MORTON GROVE STANDARD PB4-00.
						SD	10/23	VJ	10/23	1.000			
0	INITIAL RELEASE		10/31/23	SD	VJ	JG	TOLERANCES UNLESS OTHERWISE SPECIFIED:					 Morton Grove, IL U.S.A.	
	REVISION		DATE	BY	CKD.	APP.	X.X ±	X.XX ±	X.XXX ±	X.XXXX ±	ANGLE ±		
							.03	.015	.005	---	1/2°	1/64	