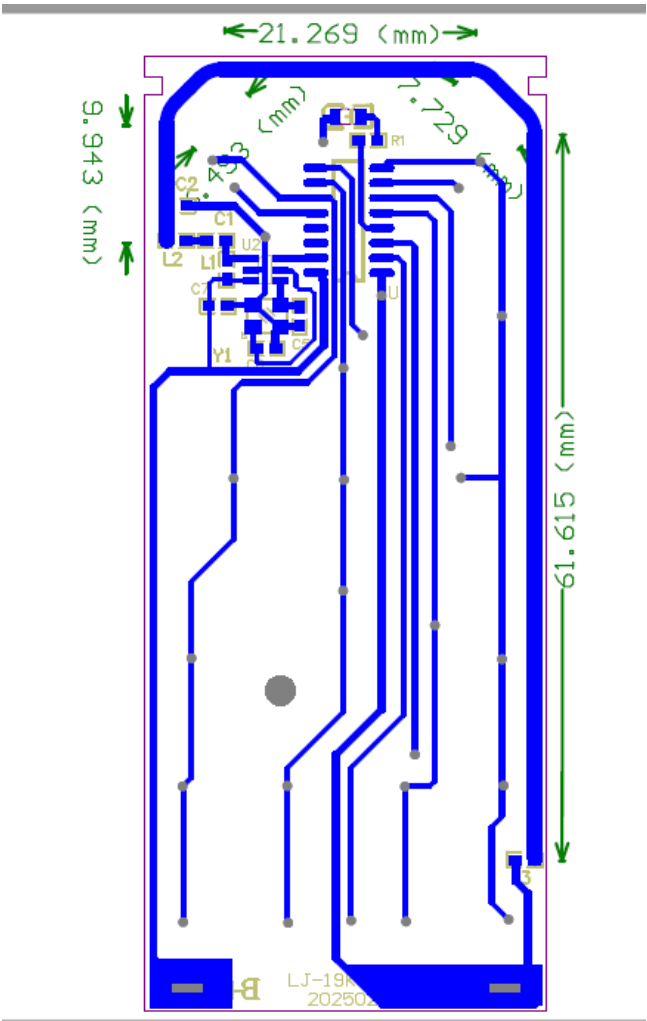


| | |
|-----------------|-------------|
| Type | PCB antenna |
| Frequency | 433.92MHz |
| VSWR | <1.5 |
| Gain | 0dBi |
| Input Impedance | 50 Ω |



We,Zhongshan Kedu Lighting Co., Ltd, states that All measurements were performed radiated and therefore additional antenna gain documentation is not required.