

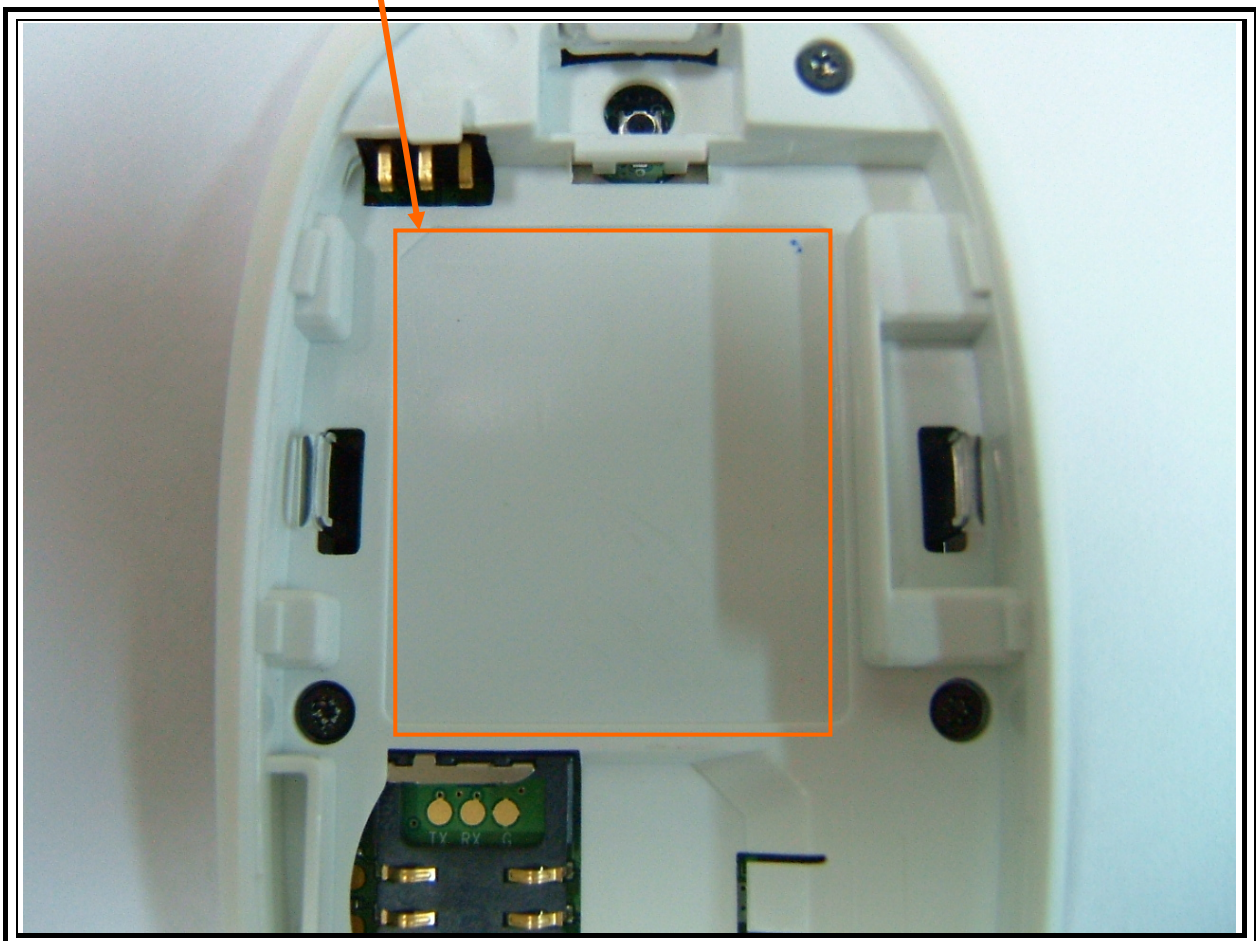
## FCC ID SAMPLE LABEL & LOCATION

(SEE NEXT PAGE)

### **LABELLING REQUIREMENTS**

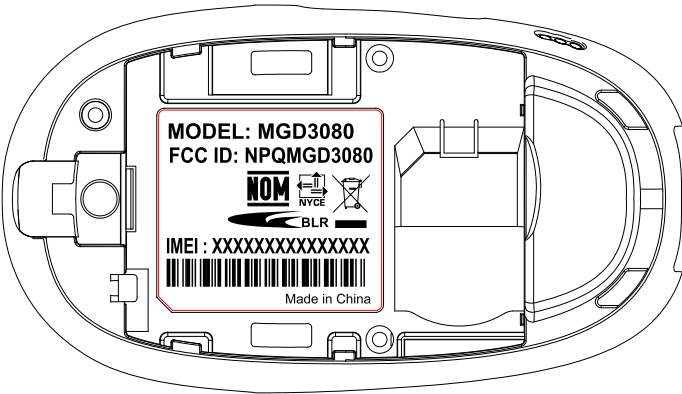
#### **PER §2.925**



The Label shown shall be permanently affixed at a conspicuous location on the device and be readily visible to the user at the time of purchase



Note: 1. The label generally is located underneath a back door of the phone.

A M E N D	DATE	CODE	MEMO	SIGN
	2006.06.20	△1	New Drawing	M.S.Kim
		△2		



TOLERANCE (+)		1-4	4-16	16-63	63-250	250-1000	ANGLE		SCALE		1 / 1	REV.	01
	Ⓐ	0.05	0.07	0.1	0.2	0.3							
	B	0.10	0.20	0.3	0.5	0.8		UNIT	M/M	DATE	2006.06.20		
	C	0.25	0.35	0.5	0.7	1.5							
DRAW & DESIGN			DET.CHE		APPROVAL		MODEL NAME		FGD3080				
S.B.Lim					I.W.Nam		PART NAME		Label Location				
 Telian Corporation							DWG. NO						