

Bluetooth music

21.5 inch Mirror DSLR Photo Booth Instruction manual



Operating Instructions for Photo Booth

Note: Before using the product, please read the instructions carefully!
Do not attempt to disassemble the product.
If the product is not working properly, please contact our partners,thank you!.

Product disassembly diagram



Screw for fitting



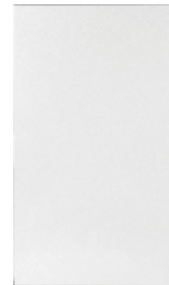
21.5 inch mirror



Fill light pack



Power supply adapter



Large printer



Small printer



Remote control



Supporting base

Support bar



Universal wheel

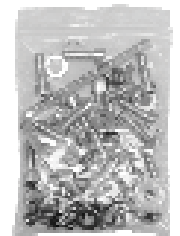


Small printer



Large printer

Printer stand



Accessory bag

Easy Installation Instructions

Take the small bracket, for example

1. Take out the 21.5-inch mirror and place it horizontally on the mounting platform with the back facing up



2. Select a support frame and remove the rear cover



3. Align the hole at the bottom of the mirror and pay attention to the direction of the support frame



4. Select a 4 x M5 Phillips screw and align it with the hole at the bottom of the mirror using a Phillips screwdriver



5. Select a base and prepare to install the base



6. Align the base with the hole positions at the bottom of the support rod



7. Use 8*M6 hex socket screws and gaskets to lock them as shown in the figure



8. Tighten all screws on the base using a hex key



9. Select four universal wheels, align them with the bottom four holes, and rotate them to lock



10. Select the printer bracket and 4*M6 Phillips screws



11. Align the back of the support with the face position, as shown in the figure



12. Use a screwdriver to secure the screws



13. Lock the rear cover of the support rod



14. Place the device horizontally on the floor



15. Use the key to open the back cover of the camera case



16. Select the power cable of the fill light and thread it out from the top



17. Select 18 inch fill light and connection rod



18. Align the screw holes at the top, as shown below



19. Insert the power cable of the adapter into the fill light switch port



20. Select the appropriate camera and place it on the camera support rod



21. Use the camera mounting screws, align them with the bottom holes and lock them tightly



22. Use the camera cable to open the camera port



23. Insert the data cable into the camera port and the other end into the USB port of the device



24. Adjust the camera position and lock the back cover of the camera box



Features

- 1.Embedded Windows intelligent operating system and unique UI design bring you more convenient operation and better visual experience.
- 2.Support USB mouse, keyboard. You are advised to use the mouse.
- 3.Built-in Wi-Fi module, large capacity of memory, large capacity of cache, watching 1080P HD movies and pictures.
- 4.High quality LCD screen for display, flicker free, low radiation, greatly reduce eye fatigue, eye protection, wide viewing Angle (178° full viewing Angle); The ultra-fast response time greatly reduces the residuals of fast-moving images.
- 5.Advanced image processing and industry-leading motion compensation technology improve flicker and blur at video edges.
- 6.Dynamic contrast technology can significantly improve the sharpness and contrast of various screens.
- 7.Multi-channel USB interface, supporting HD media streaming.
- 8.Mirror function, can be used as a mirror when not turned on.
- 9.Touch function, support ten touch.

Safety Warnings and Precautions

Thank you for buying the high-performance LCD screen Mirror photo booth. We have taken personal safety into account in product design and carried out rigorous tests in the factory.

However, improper installation and use can lead to electric shock and fire. In order to ensure safe use, maximize the performance of the product and prolong the service life of the product, please read and follow all instructions carefully before using the product.

And keep the instructions for future reference.

We strongly recommend using standard adapters and portable power supplies, or adapters with internal circuit breakers, to prevent bad power supplies from damaging the device.

Symbol Legends:

⚠ Warning: May cause personal injury or Death:

🚫 The operation is prohibited

⚠ Caution: May cause damage or property loss

If any of the following occurs:

- Voltage is unstable.
- The device has an abnormal sound or smell.
- The DC power cable is damaged.
- Equipment fall, knock, impact and other damage.
- Any liquid or foreign matter falling into the shell.

🔌 Please immediately disconnect the power supply of the device, unplug the plug from the power socket, and contact our after-sales staff for confirmation, timely maintenance.

🔥 If coal gas or other flammable gas leaks, do not pull out the plug of the equipment or other electrical appliances; instead, turn off the gas valve immediately, and open the doors and windows quickly.

⚠ WARNING

Do not use power supplies with AC output other than 100-240V 50/60Hz.

- Disconnect the power supply before connecting or disconnecting any cable.
 - Do not place the device in an unstable position to avoid damage or fire.
 - Do not place the device in the following positions:
 1. Exposure to direct sunlight, humidity, extreme temperature or excessive dust;
 2. Flammable and explosive environment;
 3. Flammable and corrosive gas environment;
 - Do not use damaged or improper power sockets, and ensure that the plug is in normal contact with the socket.
 - Do not allow dust or metal deposits to adhere to plugs and sockets.
 - Do not damage the power cord:
 1. Do not modify the power cable.
 2. Do not place heavy objects on the power cord.
 3. Keep the power cable away from heat source.
 4. Do not unplug the power cord.
 - Do not connect multiple plugs at the same time. Otherwise, excessive power consumption may cause fire.
 - Do not use an open flame (such as a lit candle) near the device. Otherwise, electric shock or fire may occur.
 - Do not put sharp objects, metals or liquids into the contact signal terminals to avoid short circuit, product damage or electric shock.
 - The internal opening of the chassis is designed for ventilation and heat dissipation to ensure the reliable operation of the components in the chassis for a long time and prevent overheating. Do not block the opening when placing the unit.
 - Do not touch the plug with wet fingers, or you may get an electric shock.
 - Do not use equipment in stormy weather, especially when there is lightning; To avoid lightning strikes, disconnect the power supply and antenna plug.
 - Do not use the equipment outdoors on rainy days. The equipment is not waterproof. Do not remove the device without permission. Otherwise, electric shock or fire may occur.
- Please find a qualified technician to repair it.

Warning Statement

This device complies with part 15 of the FCC Rules. Operation is subject to the following two conditions: (1) This device may not cause harmful interference, and (2) this device must accept any interference received, including interference that may cause undesired operation.

Any Changes or modifications not expressly approved by the party responsible for compliance could void the user's authority to operate the equipment.

Note: This equipment has been tested and found to comply with the limits for a Class B digital device, pursuant to part 15 of the FCC Rules. These limits are designed to provide reasonable protection against harmful interference in a residential installation. This equipment generates uses and can radiate radio frequency energy and, if not installed and used in accordance with the instructions, may cause harmful interference to radio communications. However, there is no guarantee that interference will not occur in a particular installation. If this equipment does cause harmful interference to radio or television reception, which can be determined by turning the equipment off and on, the user is encouraged to try to correct the interference by one or more of the following measures:

-Reorient or relocate the receiving antenna.

-Increase the separation between the equipment and receiver.

-Connect the equipment into an outlet on a circuit different from that to which the receiver is connected.

-Consult the dealer or an experienced radio/TV technician for help.

This equipment complies with FCC radiation exposure limits set forth for an uncontrolled environment. This equipment should be installed and operated with minimum distance 20cm between the radiator & your body.

⚠ CAUTION

- Do not let children climb on the equipment.
- Keep widgets away from children to prevent them from swallowing.
- If not used for a long time, please turn off the device and unplug the power plug.
- When adjusting the device position, disconnect all power cables and move them slowly to avoid tipping.
- It is strictly forbidden to scratch, beat, twist and squeeze with hard objects.
- When the unit is moved from a low temperature to a high temperature, do not start it immediately, otherwise condensation and failure may occur.
- Remove the power plug before cleaning the device. Wipe with a soft cloth; Do not use industrial chemicals; Prevent foreign matter from entering the machine. Improper cleaning (such as cleaning fluid, water) can damage the product, erase the printed information, or even fluid inflow can cause parts damage, leading to machine failure.
- If the same screen is displayed for a long time, or the moving screen has fixed text or icon, it may leave a shadow on the screen, which will not disappear when the machine is powered off; This is normal and not covered by the warranty.
- If the LCD breaks and liquid spills onto your skin, rinse immediately with water for 15 minutes and consult your doctor.
- When carrying the device by hand, please hold the backpack or shell tightly. Do not put pressure on the panel.
- Proper use of equipment: use under proper lighting conditions; Poor light or prolonged viewing can damage your eyesight.
- Please insert the plug correctly into the socket, otherwise it may cause sparks and fire.
- Specifications on this contract and packing are subject to change without prior notice.
- This manual may be slightly different from actual operations.

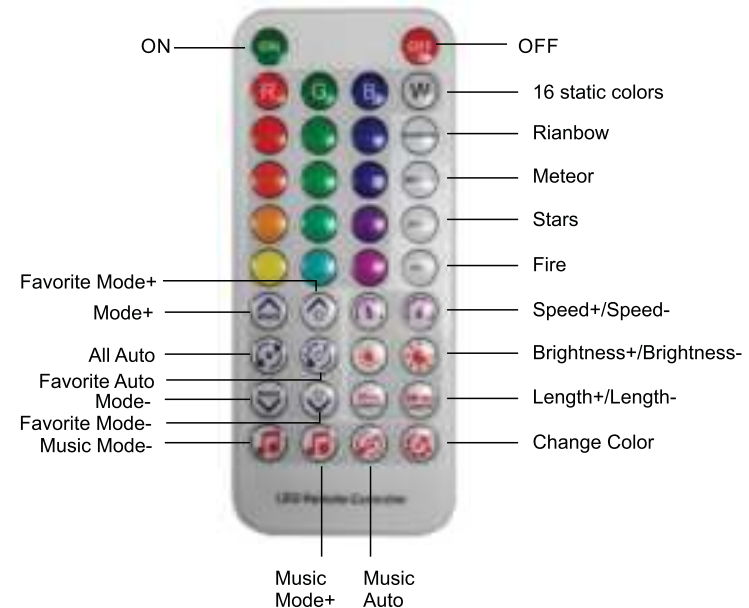
Bluetooth music light features

1. Supports both app control and IR remote control;
2. Support automatic device connection and automatic re-connection when the app turns on;
3. Support multiple devices grouping control;
4. Multiple sound collection methods: phone mic , player streaming, on-board mic;
5. Support modifying the device name, calibrate the RGB channel sequence, and timer function;
6. Compatible with the common single-lin LED driver IC on the market, can drive up to 600 pixels;
7. Built-in 142 dynamic effects, effect length adjustable, with favour effects collecting function;
8. Built-in 18 music effects, effect length adjustable, sensitivity adjustable;
9. DC 5-24V wide voltage input, the power supply has anti-reverse connection function;
10. Automatic saving function for setting parameters.



Scan the QR code to download the APP

Introduction to Remote Control



Mobile APP control



Camera support and fill light

DSLR camera support

Canon/Nikon D series products



DSLR camera fill light support

Constant light and hot boot light
(Optional)



RGB running horse light introduction



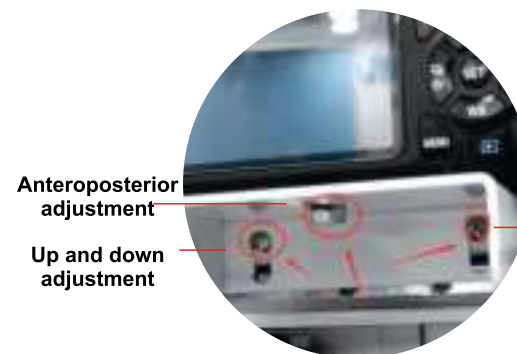
Breathing pattern Segmented mode Super model



Dazzle colour pattern The rainbow pattern Running light mode



The DSLR camera is connected to the computer



Anteroposterior adjustment

Up and down adjustment

Up and down adjustment



Canon original data cable
DIGITAL



DSLR CAMERA CONNECTED TO COMPUTER DIAGRAM



Computer USB port (not required)

Printer selection

Photo printer selection

hiti Photo Printer



P525L



P322W

hiti Photo Printer introduction



Built-in 5 language Settings
Simplified Chinese, Traditional Chinese, English, Portuguese, Spanish

Printer connection mode

Take hiti Photo Printer P525L as an example

Two kinds of connection



Method 1: Wired connection



Method 2: Wireless connection



With printer stand (optional)

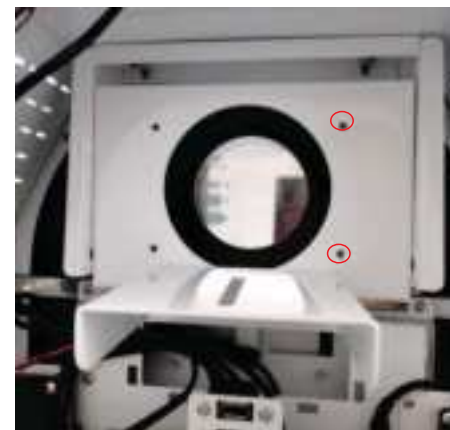


Used with Large printer



Used with microprinter

DSLR camera horizontally and vertically



Reserve vertical mounting holes

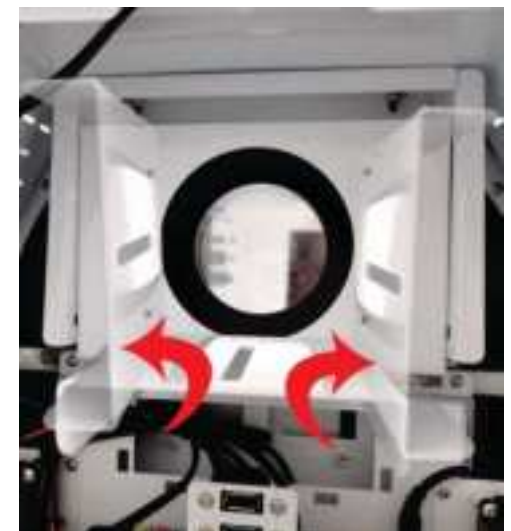


Photo booth software support



● FUNCTION

Check out the easy to use layout editor, the built-in photo kiosk to setup a printing and sharing station, or the amazing animations of mirror booth mode.

● LANGUAGE

Available in English, Espanol, Portugues, Francais, Deutsch, simplified and Traditional Chinese

The appendix

In accordance with the relevant requirements of the Administrative Measures for Pollution Control of Electronic Information Products (Order No. 39 of the Ministry of Information Industry), and in accordance with the Measures and the provisions of the Electronic Industry Standard of the People's Republic of China -- Pollution Control Label for Electronic Information Products (SJ/T 11364-2006) specified by the relevant national standards and industrial practice, The names and contents of toxic and harmful substances or elements contained in this product are listed in the following table:

List of names and content identification of toxic and harmful substances or elements

Part name	A poisonous or harmful substance or element					
	Lead (Pb)	Mercury (Hg)	Cadmium (Cd)	Hexavalent (Cr (VI))	PCBS	PBDE
LCD panel	O	O	O	O	O	O
Movement	X	X	X	X	X	X
Structure	O	O	O	X	O	O
Attachment	X	O	O	O	O	O

O: means that the content of the toxic and harmful substances in all materials of the component is below the limit requirements stipulated in SJ/T 11363-2006 standard;
X: denotes that the content of the toxic and harmful substance in at least one material of the component exceeds the limit requirements stipulated in SJ/T 11363-2006 standard.

Note: The term of environmental protection is ten years. When the temperature is 5-35°C, the toxic and harmful substances or elements contained in the product will not leak out within ten years. The term of environmental protection does not include the life of the battery.

Note: if the parameters are changed, we will not notice, the picture is for reference only, the product in kind shall prevail, the interpretation right belongs to our company

Warranty

1. This warranty card shall be properly kept by the user as a maintenance voucher.
2. This product is guaranteed for one year from the date of purchase.
3. Warranty equipment in the warranty period, in the normal use and maintenance of the case, the machine itself failure, after verification, the company will provide free maintenance and parts replacement.
4. During the warranty period, the company has the right to refuse service or charge material fees and maintenance service fees according to the following circumstances:
 - 1) The warranty card and valid purchase certificate cannot be provided.
 - 2) Product failure or damage caused by improper use by users.
 - 3) Damaged by abnormal external forces.
 - 4) Non-maintenance service provided by our company, the user disassembles and repairs by himself or herself and causes damage.
 - 5) Failure or damage caused by natural disasters or other force majeure factors.
 - 6) Others intentionally damaged.
5. The company reserves the right to modify and interpret all contents.



SIMPLE AND EASY

Sparkbooth makes it simple for anyone to set-up an instant photo booth experience. Download the Sparkbooth photo booth software to any computer with a webcam and you're ready to go! An instant party hit for you and your guests.



CUSTOM KEEPSAKE

With several different photo size choices and customizable features, Sparkbooth is a memorable and inexpensive giveaway. A perfect way to create a unique and fun party keepsake for you and your guests.



MAKE IT YOUR OWN

Sparkbooth offers customizable options to commemorate a wedding, kid's party, a birthday party or any special event. Select a theme from the layout library or use your own background photo. Place a logo or text message to the screen.



BE SOCIAL

Automatically share your photos online with party guests and friends. The built-in upload option makes it simple to post on Facebook, Twitter, Flickr and other social networks.