

USER MANUAL

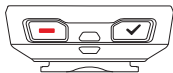
IGS320 GPS CYCLING COMPUTER

www.igpsport.com



WUHAN QIWU TECHNOLOGY CO., LTD

1. BUTTON FUNCTIONALITY

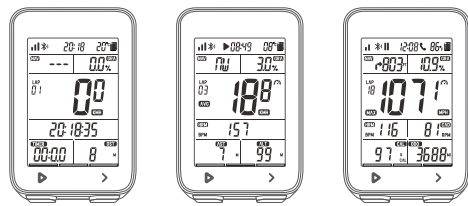


Power on	Press left button
Record/Pause	Press left button to Record or Pause
Switch display	Press right button to switch data pages
Save activity	Hold right button more than 2 seconds to save activity while recording
Power off	Hold left button more than 2 seconds
Forced shutdown	Hold left button more than 10 seconds
Setting mode	Hold right button more than 2 seconds to enter the setting mode

2. STATUS ICONS

	Satellite signals
	Bluetooth
	Pause
	Recording
	Incoming call
	Battery
	Speed sensor
	Speed arrow (The speed is greater or less than the average speed.)

3. Display



Page1 Page2 Page3

Page	
Page1	Speed, Gradient, Timer, Distance, Heart Rate, Cadence(when sensors connected).
Page2	Average Speed, Average Gradient, Total Ascent, Altitude, Average Heart Rate, Average Cadence(when sensors connected).
Page3	Max Speed, Max Gradient, Calorie, Odometer, Max Heart Rate, Max Cadence(when sensors connected).

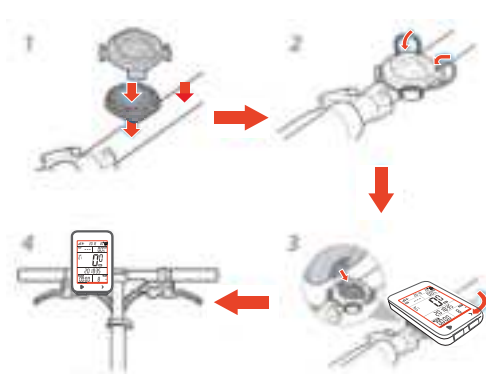
Heading

N	North	NE	Northeast
S	South	NW	Northwest
E	East	SE	Southeast
W	West	SW	Southwest

Navigation

	Go straight ahead		Turn left after 98 meters
	Off the course		Reach destination

4 INSTALLATION OF BIKE MOUNT



10.ACQUIRING SATELLITE SIGNALS AND TIME SETTING

Please make sure device is outdoor and under a clear view of the sky. Usually it may take 5 to 120 seconds to locate satellite signals. Remain stationary when acquiring satellite signals. The time and date will be calibrated automatically after locating satellite signals.

11.SMART BACKLIGHT

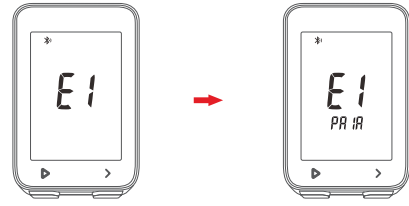
Backlight turns on before sunset and turns off after sunrise automatically. When backlight is off, press any button to turn on backlight for 30 seconds.

12.BATTERY

Battery type	Rechargeable, built-in lithium-ion battery
Battery life	About 72 hours, typical usage
Operating temperature range	From -10°C to 50°C (14°F to 122 °F)
Charging temperature range	From 0°C to 45°C (32°F to 113 °F)
Input	DC5V, 500mA
Charging time	2 Hours

Note:
1)Please use DC 5V power adapter for charging.
2) As the temperature drops, the battery life will decrease.
3) IGS320 supports charging during use.
4) Do not overstretch the USB plug for keeping waterproof and dustproof.

5.PAIRING YOUR SMARTPHONE (SETTING MODE E1)



Pair your smart phone for the first time.
1) Download IGSPORT APP.
2) Turn on the Bluetooth of the smart phone and pair Bluetooth with the device in IGSPORT APP.
3) IGS320's Bluetooth icon lights up means it is connected and paired.

Pair your smart phone for the next time.
1) Hold right button more than 2 seconds to enter the setting mode.
2) Press right button to scroll setting mode from E1 to E5.
3) Press left button to enter E1 mode when E1 flashing.
4) Press right button to pair phone, the device will restart.
5) IGS320's Bluetooth icon flashes means it is searching.
6) Open the IGSPORT APP to pair the device.

Note:
1) After the phone is paired successfully, the device and the phone will automatically connect with Bluetooth.
2) You can set the time zone, wheel size, metric and imperial units in IGSPORT APP.
3) IGS320's Bluetooth icon lights up means that it has paired the phone but is not connected.

13.FACTORY RESET

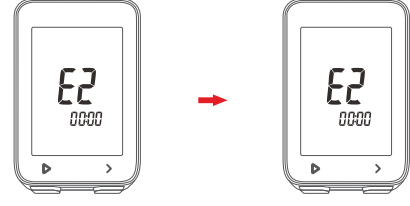
1) Power off the device.
2) Connect the device to a power adaptor or computer by USB cable.
3) Hold left and right button at the same time more than 2 seconds until "FA" displays on the screen.
4) Disconnect the device to power adaptor.

Note:
Factory reset will reset configuration, unpair Bluetooth, clear out all data and odometer, please backup activity files before factory reset.

14.SPECIFICATIONS

Location	GPS, BeiDou, Glonass, Galileo, QZSS.
Screen	2.4 inch
Weight	About 64g
Physical dimension	75x49x20mm
Waterproof	IPX7
Memory	About 400 hours
Interface	TYPE-C USB
Wireless transmission	Bluetooth 5.0 Support connecting to smart phone and sensor.

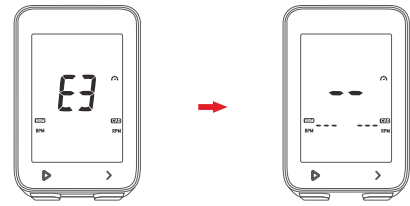
6.SETTING TIME ZONE (SETTING MODE E2)



1) In the setting mode, Press right button to scroll from E1 to E5.
2) Press left button to enter E2 mode when E2 flashing.
3) Press left button to change digits of hour and minute, press right button to change value.
4) Hold right button more than 2 seconds to save and exit.

Note:
Default time zone: UTC/GMT+00:00(Please set the local time zone).
The setting will be automatically saved if no operation in 10 seconds.

7.SEARCHING AND CONNECTING SENSORS (SETTING MODE E3)

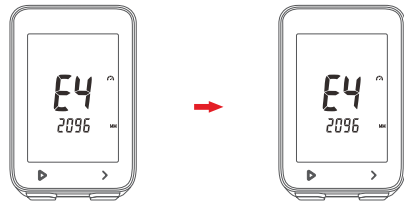


IGS320 can be connected with ANT+ and Bluetooth sensor including: heart rate monitor, cadence sensor, speed sensor, cadence and speed combined sensor.

1) Wake up sensors near the device.
2) Enter E3 in setting mode, the device will automatically search for sensors.
3) When sensors are connected, the icons will light up.
4) Device will exit searching sensors mode in 20 seconds.

Note:
1) Device will automatically connect the sensors that have been connected.
2) It is required to search the sensor again after battery is replaced.

8.SETTING THE WHEEL CIRCUMFERENCE (SETTING MODE E4)



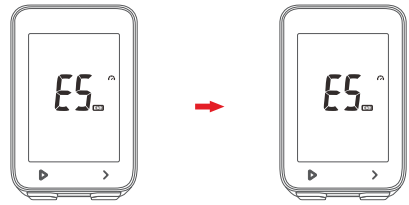
Please set the wheel circumference if you use a speed sensor.
Default wheel circumference: 2096mm
1) Enter E4 in setting mode.
2) Press left button to change numerical digits, press right button to change numerical value.
3) Hold right button more than 2 seconds to save and exit.

Common wheel size and circumference:

Wheel Size	L (mm)
12 × 1.75	935
14 × 1.5	1020
14 × 1.75	1055
16 × 1.5	1185
16 × 1.75	1195
18 × 1.5	1340
18 × 1.75	1350
20 × 1.75	1515
20 × 1-3/8	1615
22 × 1-3/8	1770
22 × 1-1/2	1785
24 × 1	1753
24 × 3/4 Tubular	1785
24 × 1-1/8	1795
24 × 1-1/4	1905
24 × 1.75	1890
24 × 2.00	1925
24 × 2.125	1965
26 × 7/8	1920
26 × 1(59)	1913
26 × 1(65)	1952
26 × 1.25	1953
26 × 1-1/8	1970
26 × 1-3/8	2068
26 × 1-1/2	2100

Wheel Size	L (mm)
26 × 1.40	2005
26 × 1.50	2010
26 × 1.75	2023
26 × 1.95	2050
26 × 2.00	2055
26 × 2.10	2068
26 × 2.125	2070
26 × 2.35	2083
26 × 3.00	2170
27 × 1	2145
27 × 1-1/8	2155
27 × 1-1/4	2161
27 × 1-3/8	2169
29 × 2.1	2288
29 × 2.2	2298
29 × 2.3	2326
650 × 35A	2090
650 × 38A	2125
650 × 38B	2105
700 × 18C	2070
700 × 19C	2080
700 × 20C	2086
700 × 23C	2096
700 × 25C	2105
700 × 28C	2136

9. SETTING METRIC AND IMPERIAL UNITS (SETTING MODE E5)



Default unit: metric (kilometer)

1)Enter E5 in setting mode.
2)Press right button to switch metric (kilometer) and imperial (mile) unit.
3)Hold right button more than 2 seconds to save and exit.

WARNING

This device complies with part 15 of the FCC Rules. Operation is subject to the condition that this device does not cause harmful interference

(1) this device may not cause harmful interference, and
(2) this device must accept any interference received, including interference that may cause undesired operation.

Any changes or modifications not expressly approved by the party responsible for compliance

could void the user's authority to operate the equipment.

NOTE: This equipment has been tested and found to comply with the limits for a Class B digital device, pursuant to Part 15 of the FCC Rules.

These limits are designed to provide reasonable protection against harmful interference in a residential installation. This equipment generates, uses and can radiate radio frequency energy and, if not

installed and used in accordance with the instructions, may cause harmful interference to radio communications. However, there is no

guarantee that interference will not occur in a particular installation. If this equipment does cause harmful interference to radio or television

reception, which can be determined by turning the equipment off and on, the user is encouraged to try to correct the interference by one or more of the

following measures:
--Reorient or relocate the receiving antenna.

--Increase the separation between the equipment and receiver.

--Connect the equipment into an outlet on a circuit different from that to which the receiver is connected.

--Consult the dealer or an experienced radio/TV technician for help.

To maintain compliance with FCC's RF Exposure guidelines, This equipment should be installed and operated with minimum

distance between 20cm the radiator your body: Use only the supplied antenna.

FCC ID:2AU4M-IGS320

WARNING

RED



Manufacturer's Name: Wuhan Qiwi Technology Co.,Ltd.
Product Name: GS320CLING COMPUTER
Model number: iGS520, iGS321, iGS325, iGS320E, iGS320C, iGS320S, iGS320P
Operating Temperature: -10° C to 40° C
This product can be used across all EU member states.

Hereby, Wuhan Qiwi Technology Co.,Ltd. declares that this GPS CYCLING COMPUTER product is in compliance with the essential requirements and other relevant provisions of Directive 2014/53/EU. A copy of the Declaration of Conformity can be found at Website: www.igpsport.cn

CAUTION: RISK OF EXPLOSION IF BATTERY IS REPLACED BY AN INCORRECT TYPE. DISPOSE OF USED BATTERIES ACCORDING TO THE INSTRUCTIONS
Care for the environment! Must not be discarded with household waste!
see below

Function	Operation Frequency	Max RF output power	Limit
BLE	402630000-402630000	<1, 10dBm	20dBm
GPS	1.575420142(Rx/tx)		