

Aug.30.2006

## **Tune up procedure for DEKO 4019**

### **1. General**

- 1.1. This Procedure is conducted by the customer using RMS SW, on  
“Parameters and Control “ screen.

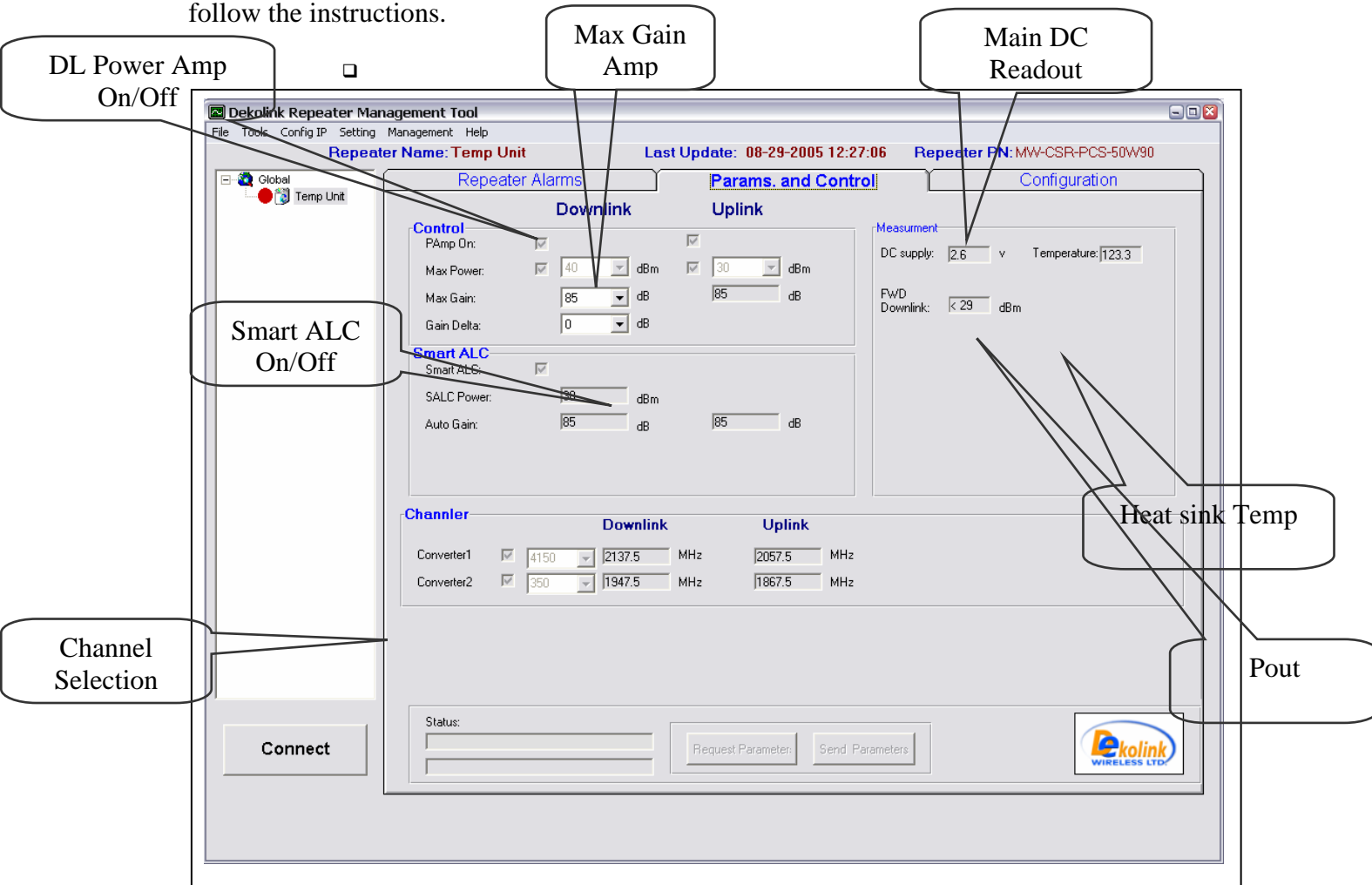
### **2.Procedure**

- 2.1. Connect to unit using RMS (see Manual).
- 2.2. Chose “Parameters and Control “ screen (see figure 1).
- 2.3. Set Max Power to the required output power using the combo choice list.
- 2.4. Set Max Gain to maximum value.
- 2.5. Set SALC check box on.
- 2.6. Set Power check box on for Downlink and uplink.

### **3.Result:**

- 3.1. The unit is set to the required power, the SALC control the Gain so that the  
output power will not exceed the maximum output power.

- Switch to the **Parameters and Control** tab as shown on the figure below and follow the instructions.



**Figure 1: RMS Software – Controls and Parameters Screen**