

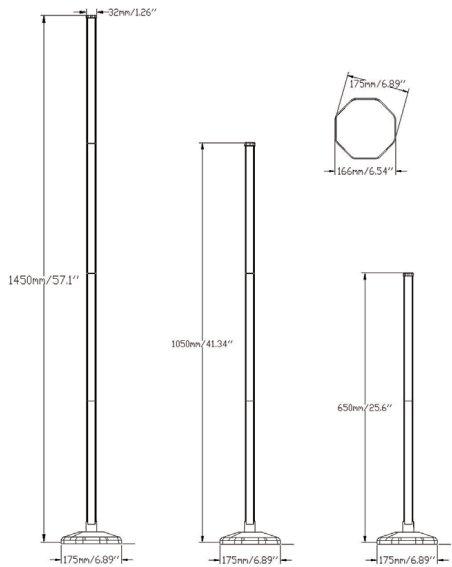
LED MAGIC COLOR
FLOOR LAMP



USER MANUAL



Installation Diagram



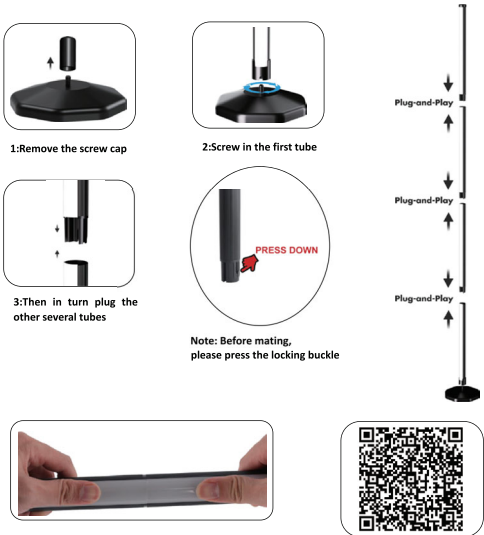
*If you purchased a 4-section product, the height is: 165cm.
*Manual measurement error, take the actual object as the criterion.

Product List



- ①②③④ : Light-1 -2 -3 or 4 (if you purchased a 4-section product)
⑤: Control receiver ⑥: Base ⑦: Manual
⑧: Remote control ⑨: Nuts
⑩: Screwdriver (When pulling out the lamp tube, push off the button.)

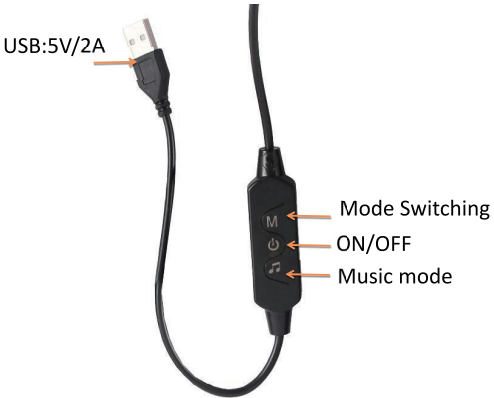
Product installation steps



After installation,there is bending and clearance,which can be adjusted according to the situation.

Use your phone to scan the QR code (APP download)

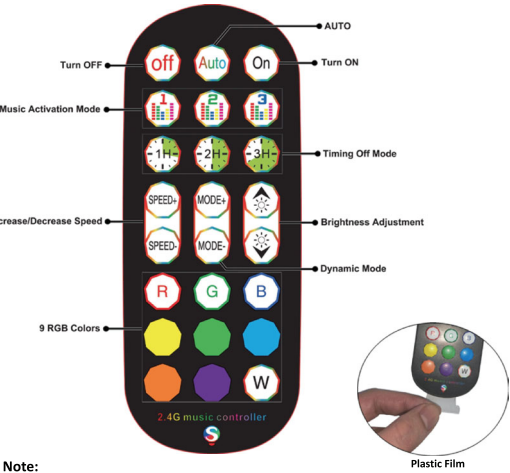
Instructions For The Receiving Controller



- You need to pay attention :
- Working temperature: -20~50℃
 - Input Volt.: 5V/2A
 - Remote control distance: >10 meters.
 - Remote control: Advanced 2.4G technology

Instructions for Remote Control:

The remote has 24 buttons



Note:

- 1: Don't set it arbitrarily, otherwise the corresponding color will be changed, such as red to blue.
- 2: If the remote control is out of control, please check if it is locked or check its battery.
- 3: Remove the plastic film before use.

Instructions for use of led controller

Los and android systems can download the APP by scanning the QR code. open the browser or other tools with "scan QR code" Function, scan the QR code as below:



APP Installation steps

Click [DuoCo! StripX](#) on the APP icon enter the app page.

After entering the App interface, if Bluetooth is not enabled, an application wants to enable the Bluetooth function of this device click allow



- 1: Connect the lamp to power.
- 2: Turn on the Bluetooth function of the mobile phone, scan the code on the receiver Box, download the APP of the mobile phone, or use the remote control to operate directly.
- 3: The product uses USB cable 5V/2A, can connect any USB port power supply, convenient, stable and safe.

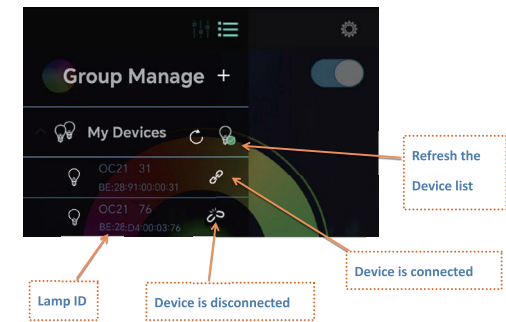
App User Guide:

Open the app and enter the interface.You will see the following page:



Device Connection:

Firstly,please dick the Device List to check your device have connected with the light



Note:

If you cannot connect the light successfully, please try the following method to connect:

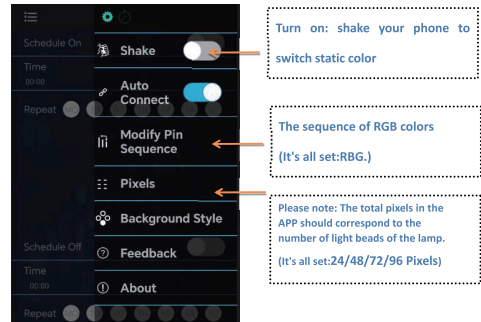
Exit the APP and reopen it →Reconnect the power of the light →Open

the phone's Bluetooth and the APP →The APP will automatically connect to the light.

For a stable connection, please make sure the power plug

you used supports 5V/2A.

Setting:



Common Problem:

- (1) Check if the power supply is normal.
- (2) Check if the Bluetooth is turn on.
- (3) Check if there are other mobile phone are connected, only support connections one to many, dose not support many to many.
- (4)Check APP Bluetooth setting if the phone is connected to the device, if connect, exit the APP and reopen, the APP will go to connect automatically.
- (5) Normal operations and can not connect, please exit the APP and reopen.
- (6) Exit APP, restart mobile phone, power on the strip light, reopen the APP, then them will connect automatically.



FCC Warning:

This equipment has been tested and found to comply with the limits for a Class B digital device, pursuant to part 15 of the FCC Rules. These limits are designed to provide reasonable protection against harmful interference in a residential installation. This equipment generates, uses and can radiate radio frequency energy and, if not installed and used in accordance with the instructions, may cause harmful interference to radio communications. However, there is no guarantee that interference will not occur in a particular installation. If this equipment does cause harmful interference to radio or television reception, which can be determined by turning the equipment off and on, the user is encouraged to try to correct the interference by one or more of the following measures:

- Reorient or relocate the receiving antenna.
- Increase the separation between the equipment and receiver.
- Connect the equipment into an outlet on a circuit different from that to which the receiver is connected.
- Consult the dealer or an experienced radio/TV technician for help.

Caution: Any changes or modifications to this device not explicitly approved by manufacturer could void your authority to operate this equipment.

This device complies with part 15 of the FCC Rules. Operation is subject to the following two conditions:

(1) This device may not cause harmful interference, and (2) this device must accept any interference received, including interference that may cause undesired operation.

This equipment complies with FCC radiation exposure limits set forth for an uncontrolled environment. This equipment should be installed and operated with minimum distance 20cm between the radiator and your body.