

PikaBoo⚡t 2

Quick Guide

Always follow the latest online instructions for operation.

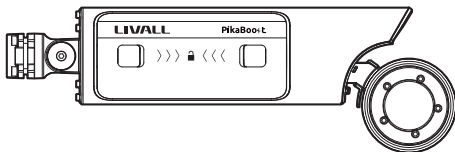
This manual is the initial version and may be subject to updates and adjustments. For the latest information, please refer to the latest version of the online manual.

Version: v1.1

Revised Date: Sept. 2024



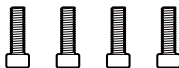
To Prepare the List



PikaBoost



Wrench



Anti-theft screw x4

Compatible Parameter of the Seat Post

Shape:

Round shape & D-shape

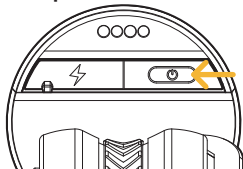
Diameter:

25.4~34.9mm

*Not compatible with carbon seatposts.

Preparatory Work

Long-press to power on



1 Power on: Long-press the power button on the PikaBoost housing till the LED light comes on.

2 Download the APP.



LIVALL Riding APP

- Scan the QR code to download the LIVALL Riding APP or search for "LIVALL Riding APP"

on the APP Store/Google Play for download.

Note:

To disassemble/install the battery cells, scan the QR code to watch the instructional videos.



Assembly Videos



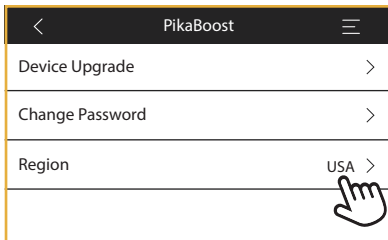
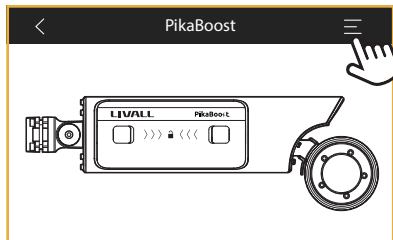
Quick Guide

3 Connect the PikaBoost with your phone.

- Turn on the phone's Bluetooth, enter the APP and go to the Device page, tap on PikaBoost to connect.

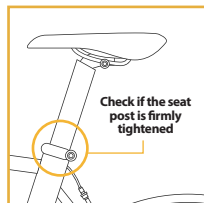
4 Select your riding region in the APP.

- Go to the PikaBoost page, tap on the icon in the upper right corner, select the correct one in "Region".

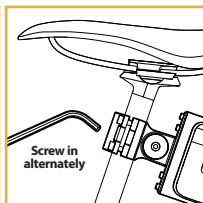


5 Check if the bicycle seat post is fully locked.

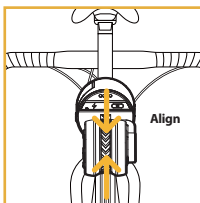
Install the PikaBoost



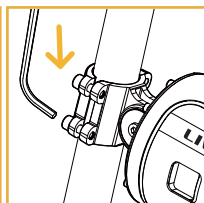
1 Make sure the seat post lock is securely tightened for a safe attachment.



2 To guarantee the uniform forces, alternately screw in the clamp and unit into the seat post until they will not drop.



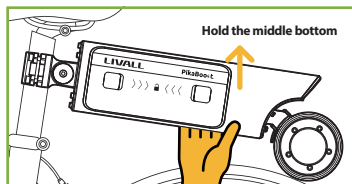
3 Align PikaBoost's tire with the rear tire of the bike.



4 Fully tighten the screws on the unit with anwrench.

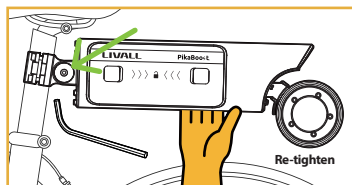
Inspection Steps

After successful installation, to ensure safe riding, check the fit between the PikaBoost tire and the bicycle rear tire.



Solid Fit

When lifting the PikaBoost with your hand, the bicycle's rear tire will also be lifted.

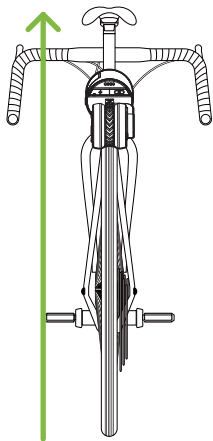


Weak Fit

When lifting the PikaBoost with your hand, the bicycle's rear tire does not make contact with it.

Continue tightening the screws.

Install the PikaBoost



Before your first ride, it is important to calibrate the bike to ensure that the PikaBoost can provide assistance properly.

1. Park the bicycle on a level surface and make sure it is standing upright. Do not tilt the bike.
2. Enter the LIVALL Riding APP, go to the PikaBoost page, tap on the Horizontal Calibration button, and start the calibration process.

Riding Modes

PikaBoost introduces two types of riding assistance. The primary type is a Smart Assist Ride, which includes Free Cruise modes. The secondary type is an Auto Assist Ride, which includes three ride modes.

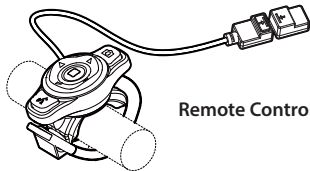
1 Smart Assist Ride

There are three riding modes available on this assistance type, and you can easily switch between them using the APP.

Riding Modes	Details	Note
Standby	PikaBoost doesn't engage in assisting the bike or creating resistance.	Activating standby mode on the APP is crucial to prevent accidents while pushing the bike.
Assistance	Assistance is only provided during pedaling, with power increasing as speed increases and decreasing as speed decreases. When pedaling ceases, assistance gradually decreases until it reaches zero.	
Exercise	PikaBoost doesn't assist your cycling, only adds resistance while converting kinetic energy into electrical energy.	
ECO	Assistance for uphill cycling only. No support or resistance on flat roads. Ceases during downhill rides while converting kinetic energy to electrical power.	

2 Auto Assist Ride

For your riding safety, when using Free Cruise mode, a remote control with brake detection must be installed.



Remote Controller

Riding Modes	Details	Note
Free Cruise	<ul style="list-style-type: none">• PikaBoost provides assistance a few seconds after the ride begins and offers a boost that sustains the current speed and enables fully automatic riding.• To increase speed, the rider can pedal faster, while the Remote Controller helps in slowing down. During braking, PikaBoost ceases assistance and energy regeneration process starts. When braking is complete, PikaBoost resumes its assistance to maintain the reduced speed, ensuring uninterrupted automated riding.• When riding downhill, PikaBoost automatically activates energy regeneration if the speed exceeds the predetermined value. After the downhill ride, the current speed is maintained, allowing for continuous automatic riding.	<p>The choice between the two riding modes is available in countries/regions that support automatic assistance without pedaling, subject to compliance with local regulations and the country/region settings in the APP.</p>

Notes:

1. Whenever you're not riding the PikaBoost, such as when you're manually pushing the bicycle, always remember to switch it to standby mode. This can be done with a single press of the button on the remote controller, or via APP, ensuring your safety as well as the safety of those around you.
2. For detailed instructions on installing and using the Remote Controller and riding modes, please refer to the official online documentation and related instructional videos.

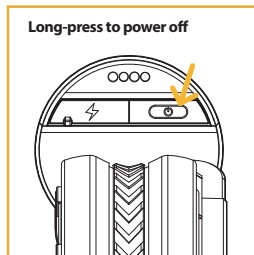


Assembly Videos

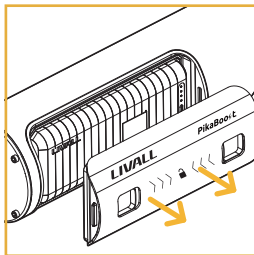


Quick Guide

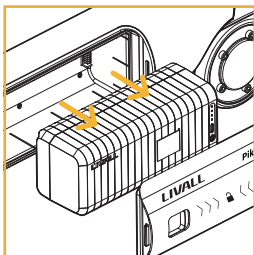
Remove the battery box (if necessary)



1. **Power off** - Long-press the power button on PikaBoost housing till the power indicator comes off.

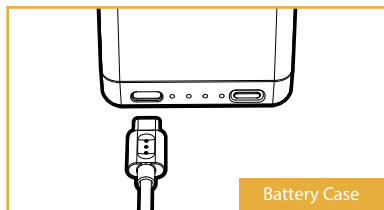


2. Open the housing lid.

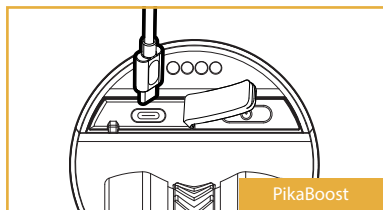


3. Pull the handle and take out the battery box.

Charge the PikaBoost



or



1. Connect the provided USB-C charging cable to the USB-C port on the PikaBoost device/ battery compartment and to a 5V~20V charger (not included).
2. Plug the charger into a power outlet.
3. Charging will begin, and the power indicator light will **flash in green**.

WARNING: ⚠

For your safety, it is prohibited to disassemble or modify the battery

PikaBoost Info

Weight	3kg/ 6.6lbs
Dimension	436*89*131mm
Top speed	32km/h(can vary between countries)
Power	250W
Rated capacity	7.2Ah
Charging port	Type-C

Package Content

PikaBoost x1	Fixed cover x1	Remote Controller x1	USB-C Charging Cable x1
wrench x1	Mudguard x1	Quick Guide x1	Anti disassembly screws x4

Safe Operating Tips

•In non-riding situations, always switch the PikaBoost from riding mode to standby mode by using the remote controller or APP. This prevents PikaBoost from providing assistance to the bicycle by starting the motor while walking, which could pose a risk of serious injury or death.

•Due to the added weight of PikaBoost on bicycles, it is not recommended to use this product for large jumps or stunts of any kind. The manufacturer is not responsible for any accidents, injuries, or property damage caused by the use or misuse of PikaBoost E-bike conversion kit by riders, including any damage incurred from off-road use.

•Failure to properly install, ensure compatibility, operate or maintain any components or accessories may result in serious injury or death.

•Before using the PikaBoost, users must select the corresponding country/region on the APP to obtain legal top speed and a suitable riding mode. It is important to ride at a suitable speed based on the usage area, riding conditions, and user experience level.

- Any non-original modifications or alterations made to your PikaBoost may void the warranty and result in an unsafe riding experience.
- As a user, you have the primary responsibility for operating PikaBoost safely. Always stay alert and aware to avoid any risky behaviors, and comply with traffic regulations.
- To prevent unauthorized use, always remove the battery pack from PikaBoost on your bicycle and store it in a safe place when not in use. Failing to prevent unauthorized use of your PikaBoost may result in serious injury or even death to others.
- Never operate your PikaBoost while drinking alcohol or using drugs, including prescription or over-the-counter medications.
- If you have any disabilities or impairments such as visual impairment, hearing impairment, physical impairment, cognitive/language impairment, and/or epilepsy, please consult your doctor before using the PikaBoost for cycling.
- Do not allow children to use PikaBoost without supervision. Make sure children maintain a safe distance from PikaBoost at all times while using it.

Disclaimer: THE MANUFACTURER, SELLER, AND DISTRIBUTORS ARE NOT RESPONSIBLE FOR ANY ACCIDENTS, INJURIES, OR PROPERTY DAMAGE CAUSED BY IMPROPER USE, OPERATION, OR RIDING.

Please note that this statement is intended to remind you to use PikaBoost and the detachable power battery (lithium battery) correctly and safely to reduce potential risks and damages.

By using this product, you agree to comply with all the terms and conditions stated in this statement and take full responsibility for the risks and liabilities associated with using the PikaBoost and power battery (lithium battery).

We are not responsible for any losses or injuries caused by improper use of the product and/or battery, and we reserve the right to modify, interpret, and publish this statement on our official website.

Users must comply with the latest version of the operating instruction and safe operation tips.

Local Laws

The regulations regarding the use and operation of E-bike conversion kits may vary depending on the country, state/province, and city of residence. In many cases, the regulations for using E-bike conversion kits are the same as those for regular bicycles.

However, each jurisdiction may have laws regarding permits and regulations for E-bike conversion kits, areas where they can be ridden, minimum riding age, or required equipment (such as helmets).

Riders are responsible for understanding the local regulations for using such products and complying with them.

Safety Information

- Keep the product dry. Do not use the product in places with dust, moisture, or dirt to avoid internal circuit malfunctions.
- Do not use this product during thunderstorms. Thunderstorms may cause equipment malfunctions or motor hazards.
- Do not use the PikaBoost to supply power when rainy riding. Dry your USB-C charging port before charging if there are water stains.
- Use this product within the charging temperature range of 0°C-40°C and the discharging temperature range of -10°C to 40°C. Store the device and its accessories within the temperature range of -10°C to 40°C. Extreme temperatures may cause equipment malfunctions.
- When charging the device, the power socket should be installed near the device and easily accessible. When charging is complete or not needed, please disconnect the charger from the device and unplug it from the power socket.
- If the device needs to be charged via a USB port, make sure the USB port has the USB-IF logo and meets the relevant specifications of USB-IF.
- Keep the device and battery away from sources of fire, high temperatures, and direct sunlight.

- Do not throw the battery into the fire. Do not disassemble, drop, crush, or modify the battery. Do not insert foreign objects or puncture the battery.

- Do not immerse the battery in water or other liquids. Avoid external impacts, pressure, or severe collisions on the battery to prevent leakage, overheating, fire, or explosion.

- Dispose of the device, battery, and other accessories according to local regulations. Do not treat them as household waste. Improper disposal of batteries may lead to explosions.

- The device and its accessories may contain small parts. Please keep them out of the reach of children. Children may accidentally damage the device and its accessories or swallow small parts, leading to choking or other dangers.

Warning

NOTE: This equipment has been tested and found to comply with the limits for a Class B digital device, pursuant to part 15 of the FCC Rules. These limits are designed to provide reasonable protection against harmful interference in a residential installation. This equipment generates, uses and can radiate radio frequency energy and, if not installed and used in accordance with the instructions, may cause harmful interference to radio communications. However, there is no guarantee that interference will not occur in a particular installation. If this equipment does cause harmful interference to radio or television reception, which can be determined by turning the equipment off and on, the user is encouraged to try to correct the interference by one or more of the following measures:

- Reorient or relocate the receiving antenna.
- Increase the separation between the equipment and receiver.
- Connect the equipment into an outlet on a circuit different from that to which the receiver is connected.
- Consult the dealer or an experienced radio/TV technician for help.

Changes or modifications not expressly approved by the party responsible for compliance could void the user's authority to operate the equipment.

This device complies with Part 15 of the FCC Rules. Operation is subject to the following two conditions:

(1) this device may not cause harmful interference, and (2) this device must accept any interference received, including interference that may cause undesired operation.

Operating Frequency Range	The maximum RF Output Power
Bluetooth BLE 2402-2480MHz	-3.30dBm

Hereby, LIVALL Tech Co., Ltd. declare that the radio equipment type Pikaboost is compliance with Directive 2014/53/EU.

The full text of the EU declaration of conformity is available at the following internet address: <https://livall.com/pages/product-documents>.

FCC ID: 2AEKF-L4P01



Warranty Policy

1. Basic Information

- For product malfunctions, please contact LIVALL customer support directly. For more details, visit livall.com or livall-pikaboost.com, or email pikaboost@livall.com.
- The warranty period of the product is subject to the warranty period announced by LIVALL on the official website.

2. Warranty Regulations

- The warranty period for the product starts from the shipping date plus the grace period.
- Repaired products continue to enjoy warranty services within the warranty period. If the warranty period is less than three months from the end, the replaced parts have a three-month warranty from the date of replacement. Replaced parts belong to the manufacturer, and appropriate costs may be charged when necessary.

3. Non-warranty Regulations

- Non-hardware-based technical problems.

- Products without the LIVALL logo. Non-LIVALL accessories or user-replaced accessories which have not been purchased from LIVALL or a LIVALL authorized seller.
- Cleanliness or regular maintenance of the product.
- Consumable materials (such as natural consumption, wear and tear, and aging of the housing, plug-in parts, and battery cells), malfunction or damage caused by incorrect installation, operation (such as mixing battery cells when replacing them, etc.), or use in an operating environment other than that specified for the product (such as excessively high or low temperature, excessive humidity or dryness, high altitude, unstable voltage or current, etc.).
- Damage caused by accident, abuse (including exceeding the working load), or improper use.
- Damage caused by improper storage (such as rodent damage, and liquid infiltration).
- Malfunctions or damage caused by unauthorized disassembly and repair, unauthorized modification, or abuse.
- Damage caused by repairs not performed by a LIVALL-authorized repair center.

LIVALL



Assembly Video & Online Resources Links

Scan the QR Code or go to
the "Support" section of the *livall.com* or *livall-pikaboost.com*

© Copyright LIVALL 2024.