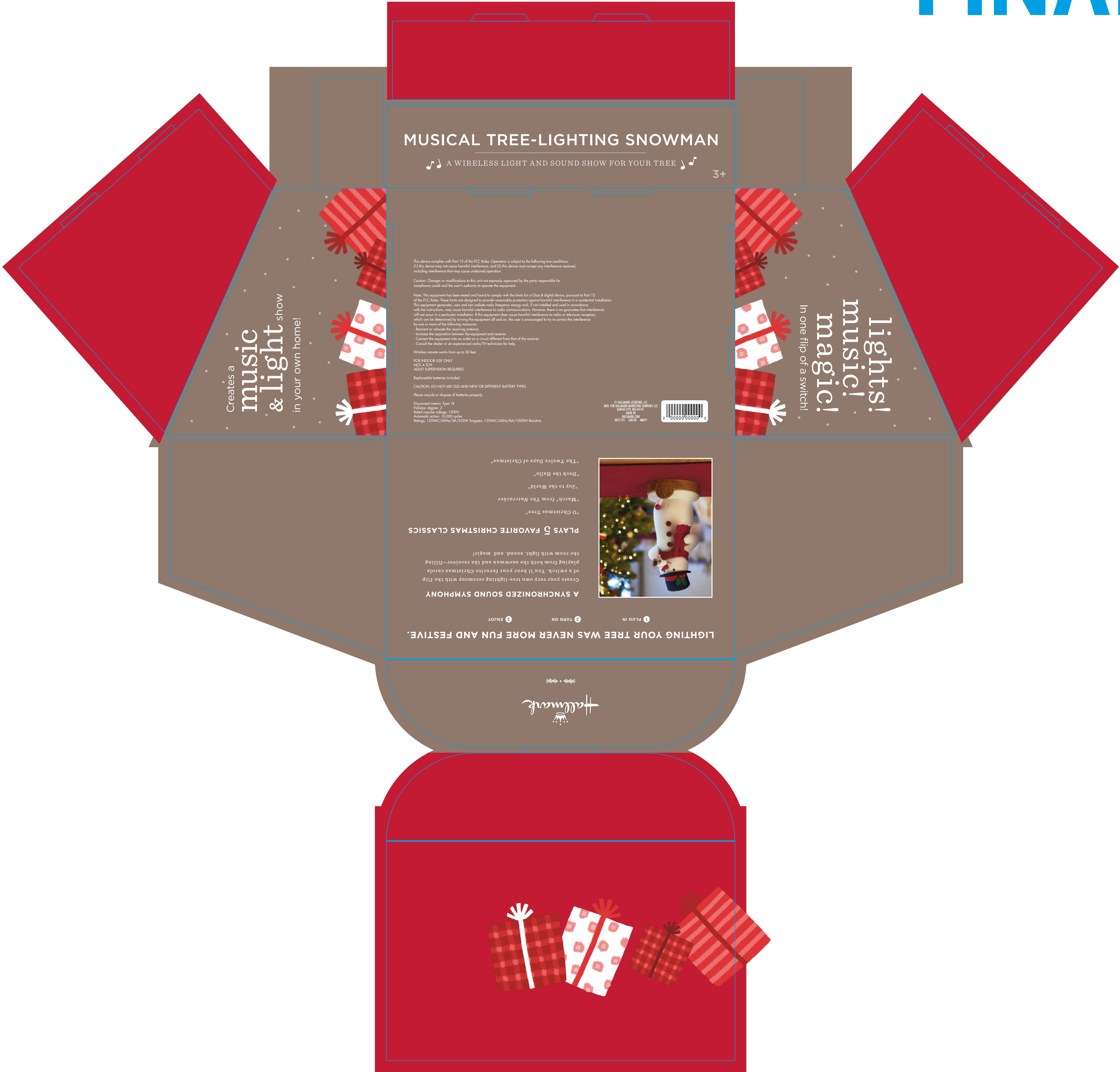


Musical Tree-Lighting Snowman

VENDOR TO STRIP IN: UPC,
COUNTRY OF ORIGIN-FUTURA MEDIUM CONDENSED AT 7 PTS
DATE CODE-FUTURA MEDIUM CONDENSED AT 7 PTS
PRICE-FUTURA MEDIUM CONDENSED AT 7 PTS
VENDOR RESPONSIBLE FOR UPC READABILITY
VENDOR RESPONSIBLE FOR ALL TRAPPING

1XKT1725U TRAY FRONT PROCESS COLORS



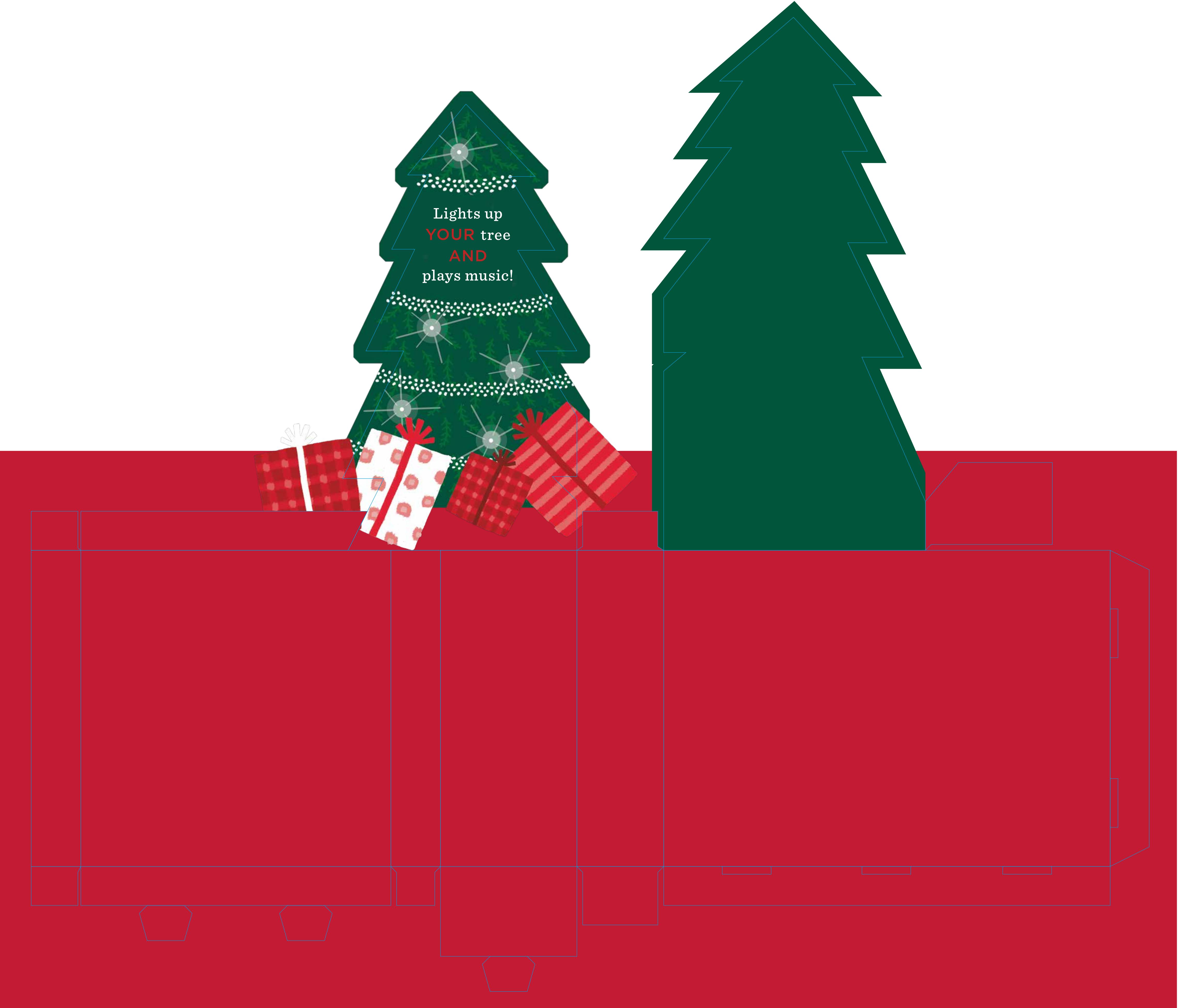
FINAL ART

1XKT1725U CALLOUT LABEL
FRONT PROCESS COLORS



APROX. SIZE 1.35" DIAMETER

1XKT1725U INSERT(STAGE) FRONT PROCESS COLORS



This device complies with Part 15 of the FCC Rules. Operation is subject to the following two conditions:
(1) this device may not cause harmful interference, and (2) this device must accept any interference received,
including interference that may cause undesired operation.

Caution: Changes or modifications to this unit not expressly approved by the party responsible for
compliance could void the user's authority to operate the equipment.

Note: This equipment has been tested and found to comply with the limits for a Class B digital device, pursuant to Part 15
of the FCC Rules. These limits are designed to provide reasonable protection against harmful interference in a residential installation.
This equipment generates, uses and can radiate radio frequency energy and, if not installed and used in accordance
with the instructions, may cause harmful interference to radio communications. However, there is no guarantee that interference
will not occur in a particular installation. If this equipment does cause harmful interference to radio or television reception,
which can be determined by turning the equipment off and on, the user is encouraged to try to correct the interference
by one or more of the following measures:

- Reorient or relocate the receiving antenna.
- Increase the separation between the equipment and receiver.
- Connect the equipment into an outlet on a circuit different from that of the receiver.
- Consult the dealer or an experienced radio/TV technician for help.

Wireless remote works from up to 50 feet.

FOR INDOOR USE ONLY.
NOT A TOY.
ADULT SUPERVISION REQUIRED.

Replaceable batteries included.

CAUTION: DO NOT MIX OLD AND NEW OR DIFFERENT BATTERY TYPES.

Please recycle or dispose of batteries properly.

Disconnect means: Type 1B
Pollution degree: 2
Rated impulse voltage: 1500V
Automatic action: 10,000 cycles
Ratings: 125VAC/60Hz/5A/625W Tungsten, 125VAC/60Hz/8A/1000W Resistive

© HALLMARK LICENSING, LLC
MFD. FOR HALLMARK MARKETING COMPANY, LLC
KANSAS CITY, MO 64141
MADE IN
HALLMARK.COM
XKT1725 S00.00 MMY

