

封面

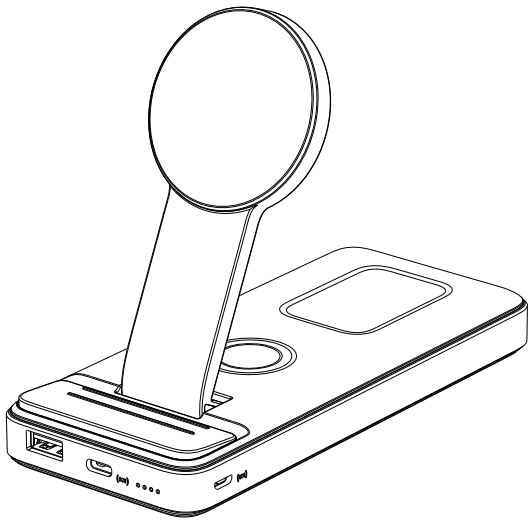
90.00 mm

封底

User Manual

Model: StandPow TM10000

Accessories:
1 * Power Bank Stand
1 * USB-A to Type C Cable
1 * User Manual

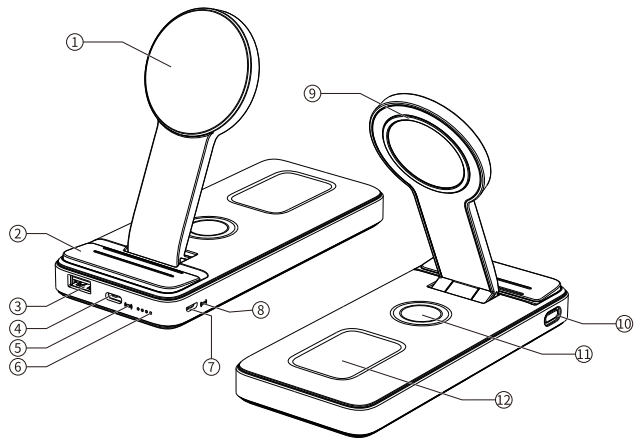


Note:
Thank you for your acquisition of this power bank stand , please read this manual carefully before using this product.

SPECIFICATIONS

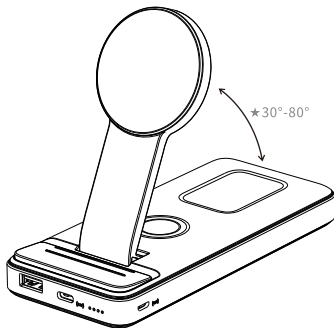
Battery Capacity	10000mAh
Rated Capacity	6500mAh
Type C Input	5V/2.6A, 9V/2A, 12V/1.5A
MicroUSB Input	5V/2A, 9V/2A, 12V/1.5A
USB-A Output	5V/3A, 9V/2A, 12V/1.5A(Max 20W)
Type C Output	5V/3A, 9V/2.22A, 12V/1.67A
Wireless Output(Mobile)	5W, 7.5W, 10W, 15W
Airpods Output	5W (Max)
iWatch Output	3W (Max)
Simultaneous Output	5V/3A
Dimension	6.46*2.85*1.07 inch (164.1*72.6*27.4 mm)
Weight	11.81 oz (335 g)

PRODUCT STRUCTURE



- ① 1st Wireless Charging Area for iPhone 12/13 or Other Smartphones with MagSafe Case
- ② Non-slip Mat
- ③ USB A Output
- ④ Type C Input/Output
- ⑤ Wireless Charging Indicator
- ⑥ Power Rate Indicator
- ⑦ Micro USB Input
- ⑧ Headphone Charging (2nd Wireless Charging) Indicator
- ⑨ Silicone Crash Pad
- ⑩ Switch
- ⑪ 3rd Wireless Charging Pad for Apple Watch
- ⑫ 2nd Wireless Charging Pad for AirPods

Stand



The stable stand of this power bank is not only for the angle-adjusting, but also can be folded to flat for travelling. You can adjust the angle (30-80°) according to your needs. When you need not to charge, you can use it as a simple MagSafe stand to support your phone. Just press the button via double-quick press. Or you can use it as a simple phone stand for other non-MagSafe items like iPad in horizontally or vertically.

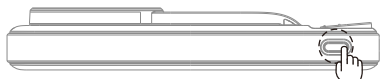
Warning

- The power bank stand will generate heat when charging (it is normal for the wireless charging technology). Please use it in a well-ventilated area when charging.
- Keep the power bank stand away from heat sources, direct sunlight, humidity, water or other liquids.
- Do not operate the power bank stand if it is wet or damaged to prevent electric shock and explosion. Do not repair without unauthorized.
- Do not use the power bank stand with wet hands.
- Do not use the unit for purposes other than its intended use.



HOW TO USE

Switch



Use of switches
Press the switch once to power on the product, the battery indicator will light up. Then it is in the standby state and other devices can be charged.
Press the switch twice continuously, then the output will turn off.

Tips: In standby mode, it will turn off automatically after about 25 seconds without performing other operations.

Indicator

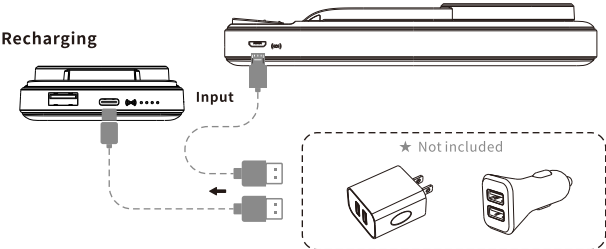


Wireless Charging Indicator
When in standby, the light isn't light up.
When charging, white light always lights up.
When charging abnormally, white light flashing.

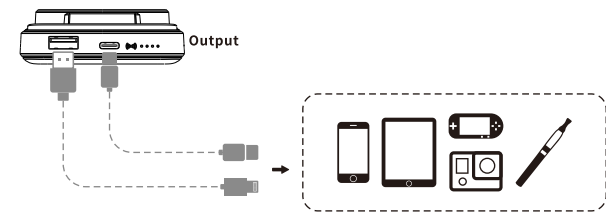


Airpods charging indicator status
Airpods charging standby, No lighting.
Airpods charging, White light stay on.

Recharging



You need to charge the product when the power or battery is low. You can use Micro USB or TYPE-C standard charging cable to connect this product and plug USB A into QC/PD adapter to charge the product.



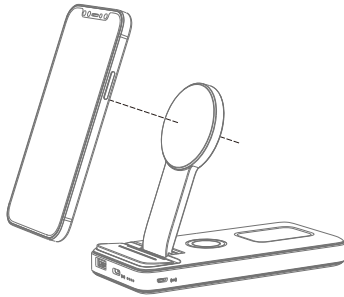
- 1.Insert the USB charging cable USB A end into Output.
- 2.Plug the other end of the cable into a terminal such as phone.

Pass Through Charging

You can put (Stick to) your iPhone 12/13, AirPods and Apple Watch on the corresponding charging area and connect this power bank stand to the power source (PD 20W or QC3.0 18W). It will charge the power bank stand itself and your iPhone 12/13, AirPods and Apple Watch at the same time.

1st Wireless Charging

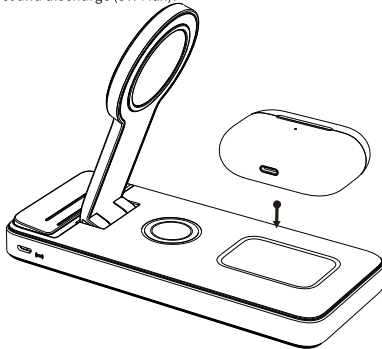
Please fit the product with the back of your iPhone (12 or 13 series) or other wireless charging phone (which with magnetizing ring attached), it will charge your phone automatically via the built-in magnetic wireless charging, Max to be 15W, iPhone series is 7.5W.



Note:
The multi-function wireless power stand is mainly used for iPhone 12, iPhone 13 series, or phones with magnetizing rings attached.

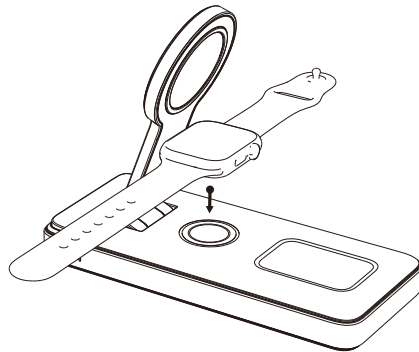
2nd Wireless Charging for AirPods ⑫

Please lay down your AirPods onto the charging area (small groove) and it will automatically detect and discharge (5W Max).



3rd Wireless Charging for Apple Watch

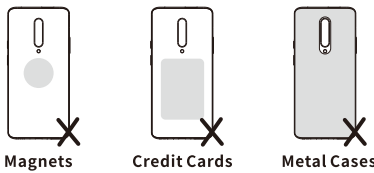
Make sure your Apple Watch is stick to the Magnet of the Wireless Charger for Apple Watch⑪. It will automatically detect the Apple Watch and discharge it.



Remark: This product is only available for iwatch with buckle design strap.

When your wireless charging is not working properly

- Clean the clutter on the wireless charge.
- Please make sure the wireless charging coil is correctly positioned with the phone coil.
- When the wireless charger is overheating, keep your mobile device away from the wireless transmitter. Please wait for the wireless transmitter to cool down before trying to charge it.



20220111 内容有调整 请注意

品名：	StandPow TM10000-中性说明书	规格：	100g 双胶纸 黑白 正反印刷 3折页 尺寸：90x130 mm
版本：	20220111		
制作：	李志敏		
料号：			

This equipment has been tested and found to comply with the limits for a Class B digital device, pursuant to part 15 of the FCC Rules. These limits are designed to provide reasonable protection against harmful interference in a residential installation. This equipment generates, uses and can radiate radio frequency energy and, if not installed and used in accordance with the instructions, may cause harmful interference to radio communications. However, there is no guarantee that interference will not occur in a particular installation. If this equipment does cause harmful interference to radio or television reception, which can be determined by turning the equipment off and on, the user is encouraged to try to correct the interference by one or more of the following measures:

- Reorient or relocate the receiving antenna.
- Increase the separation between the equipment and receiver.
- Connect the equipment into an outlet on a circuit different from that to which the receiver is connected.
- Consult the dealer or an experienced radio/TV technician for help.

Caution: Any changes or modifications to this device not explicitly approved by manufacturer could void your authority to operate this equipment.

This device complies with part 15 of the FCC Rules. Operation is subject to the following two conditions: (1) This device may not cause harmful interference, and (2) this device must accept any interference received, including interference that may cause undesired operation.

The device has been evaluated to meet general RF exposure requirement.