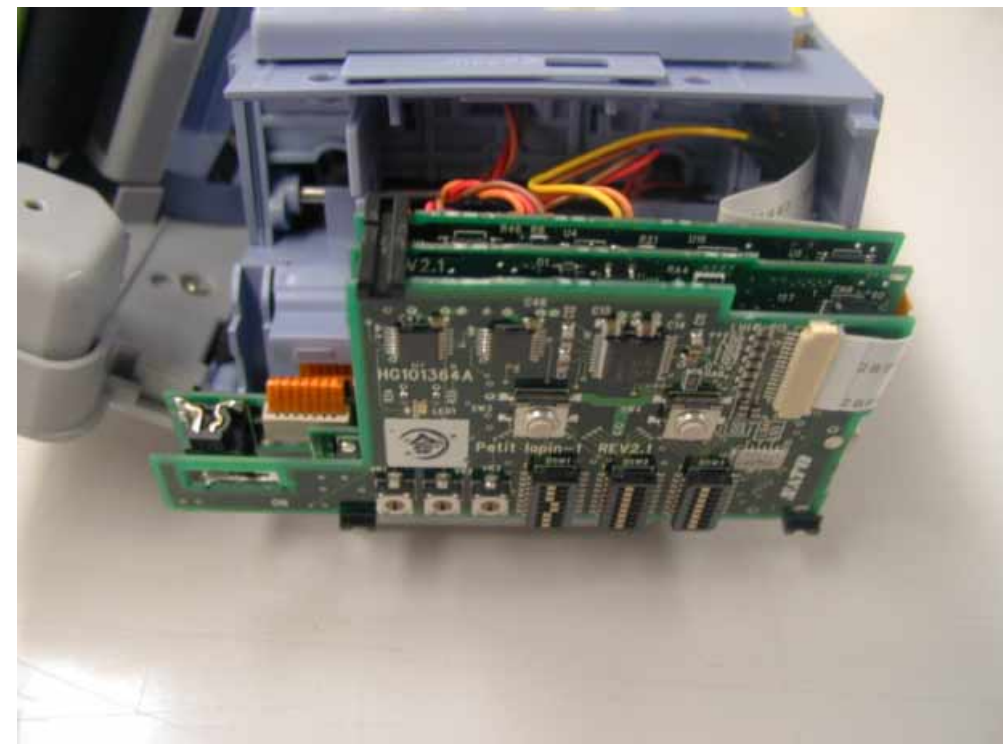


Internal Photographs

- Open the Front Panel (1) -



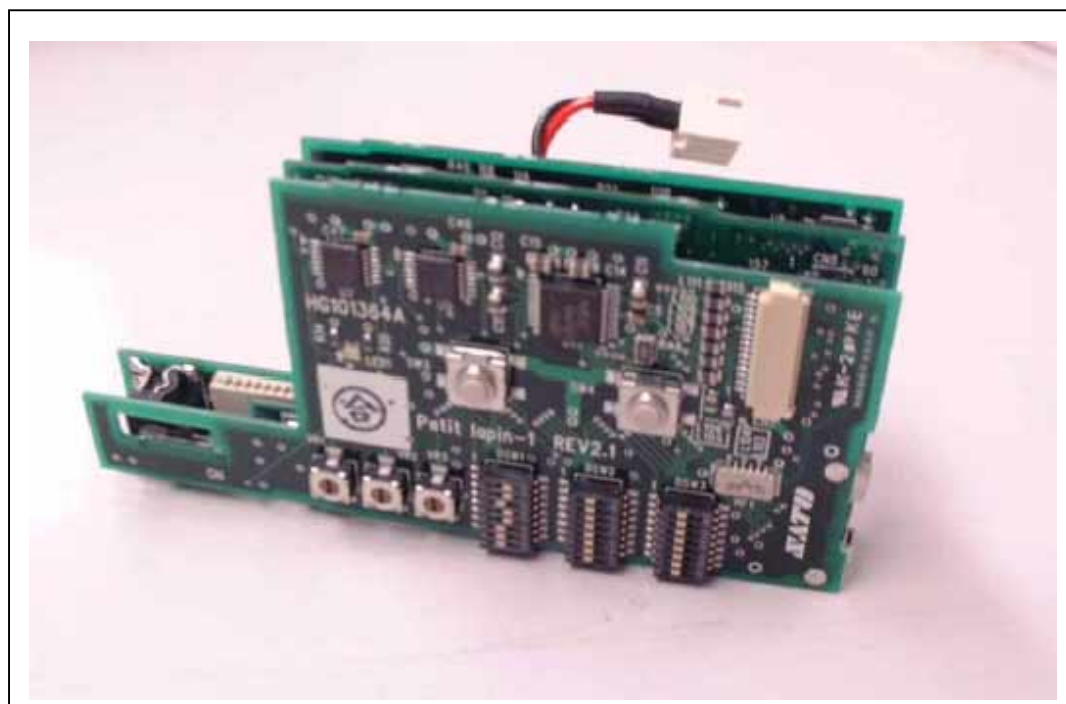
- Open the Front Panel (2) -



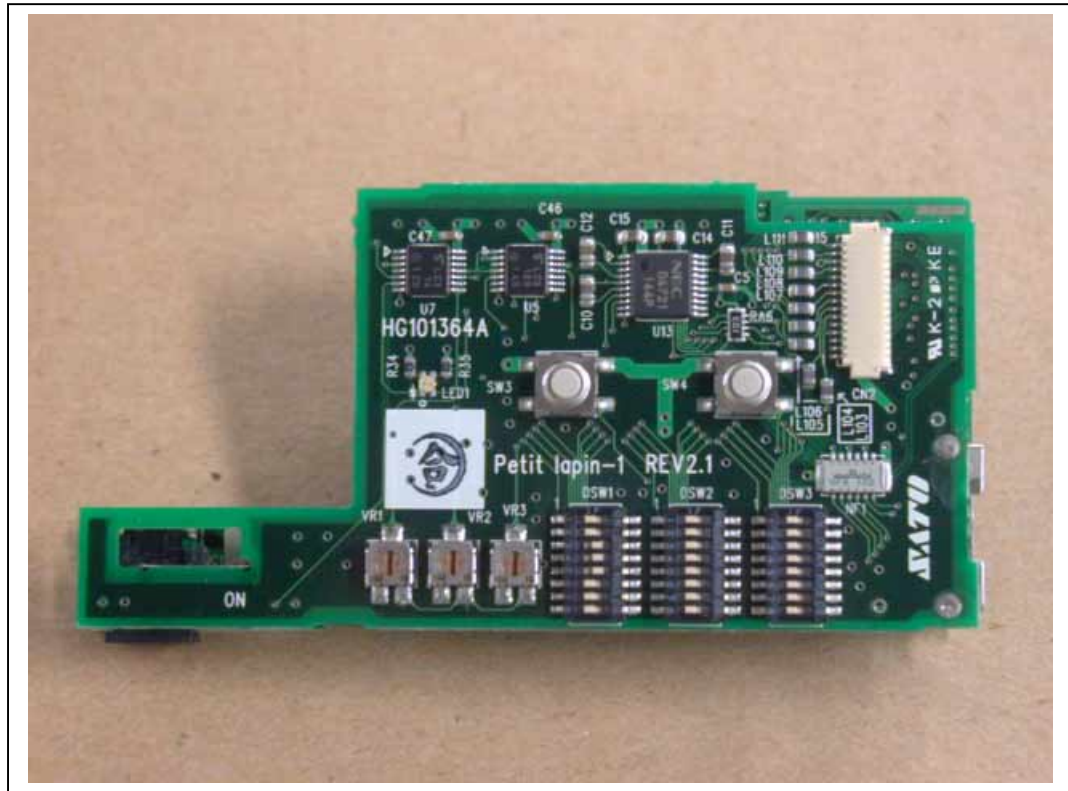
- TX Module (Bluetooth module) Location -



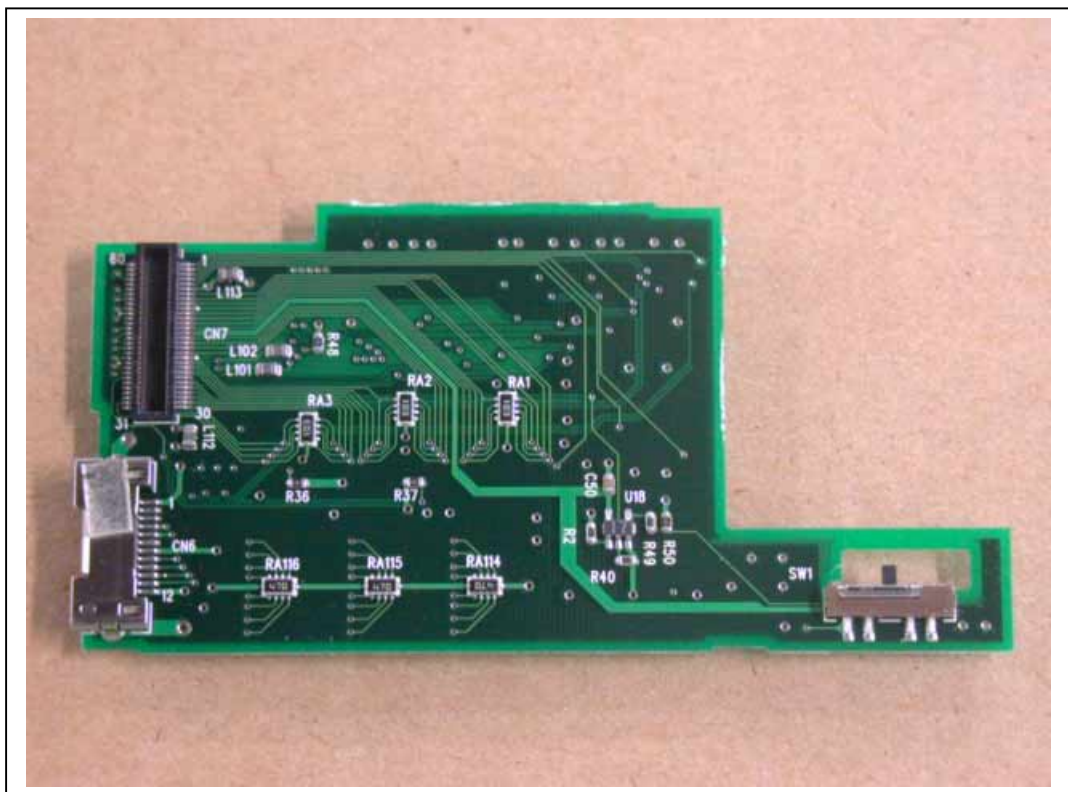
- Circuit Board 1, 2, 3 Over View -



- Circuit Board 1 (A side) -



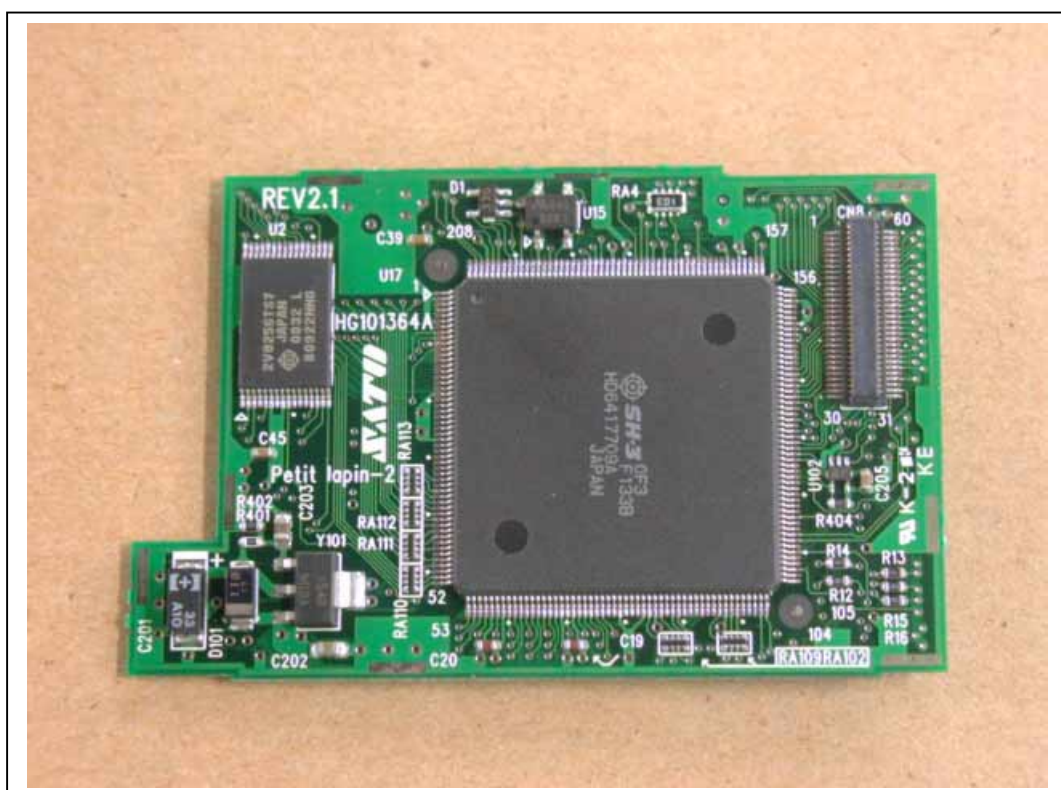
- Circuit Board 1 (B side) -



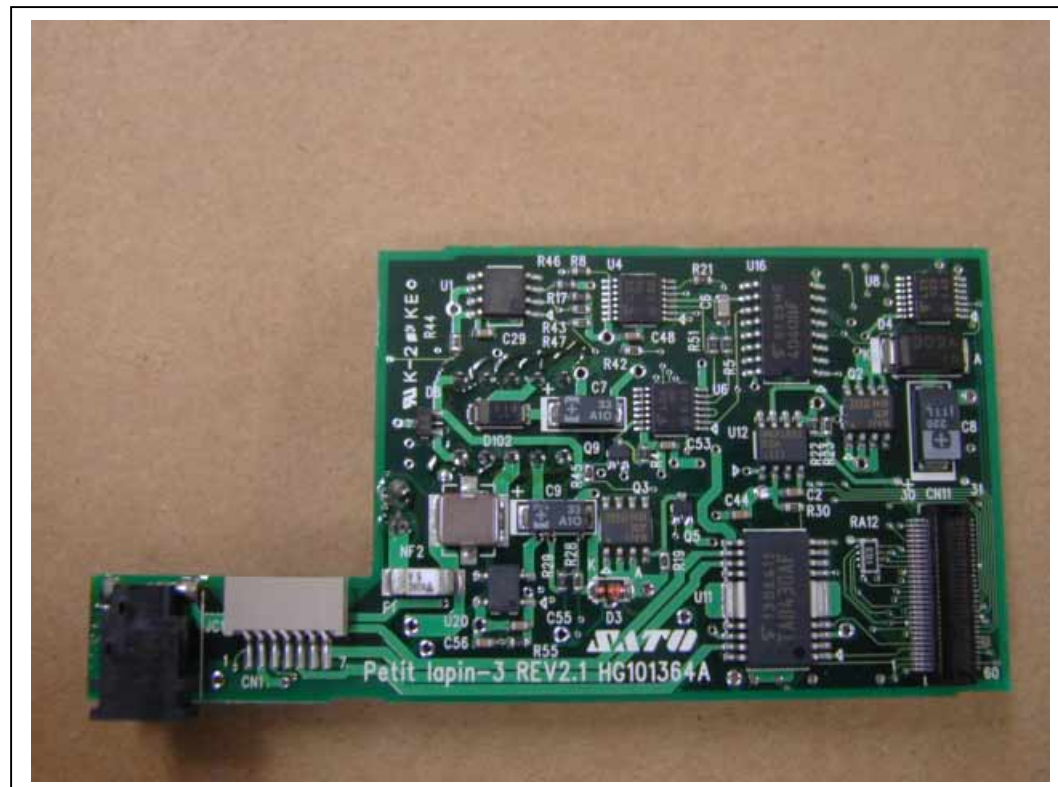
- Circuit Board 2 (A side) -



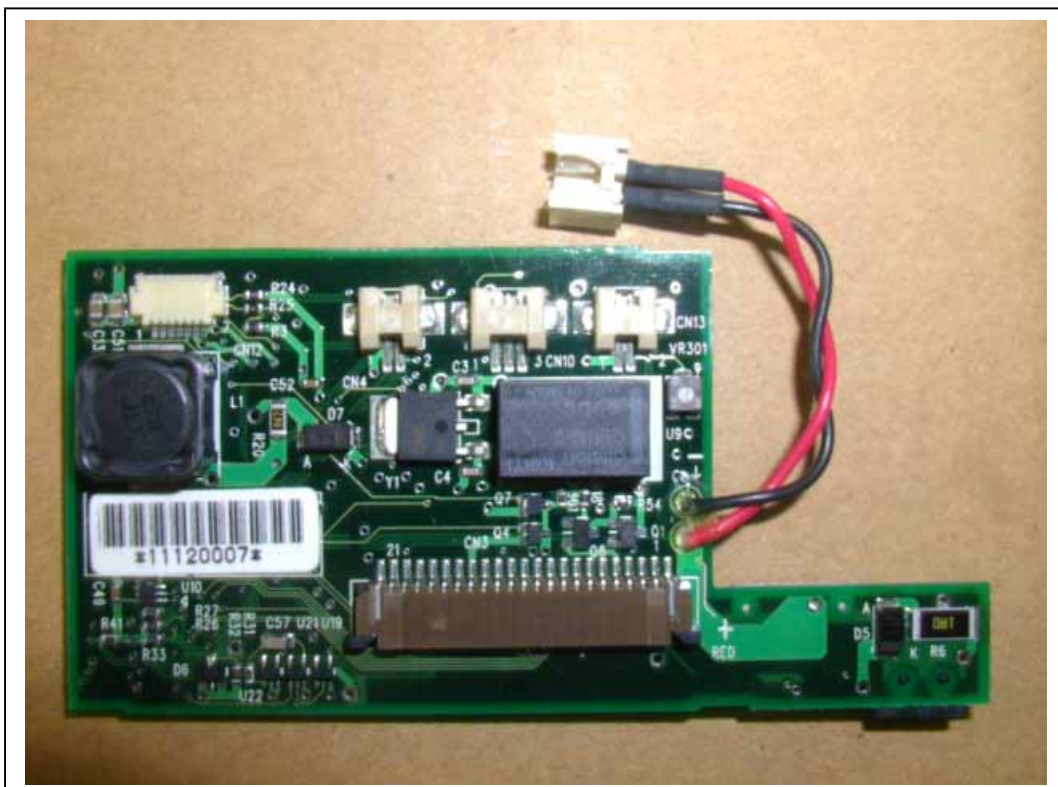
- Circuit board (B side) -



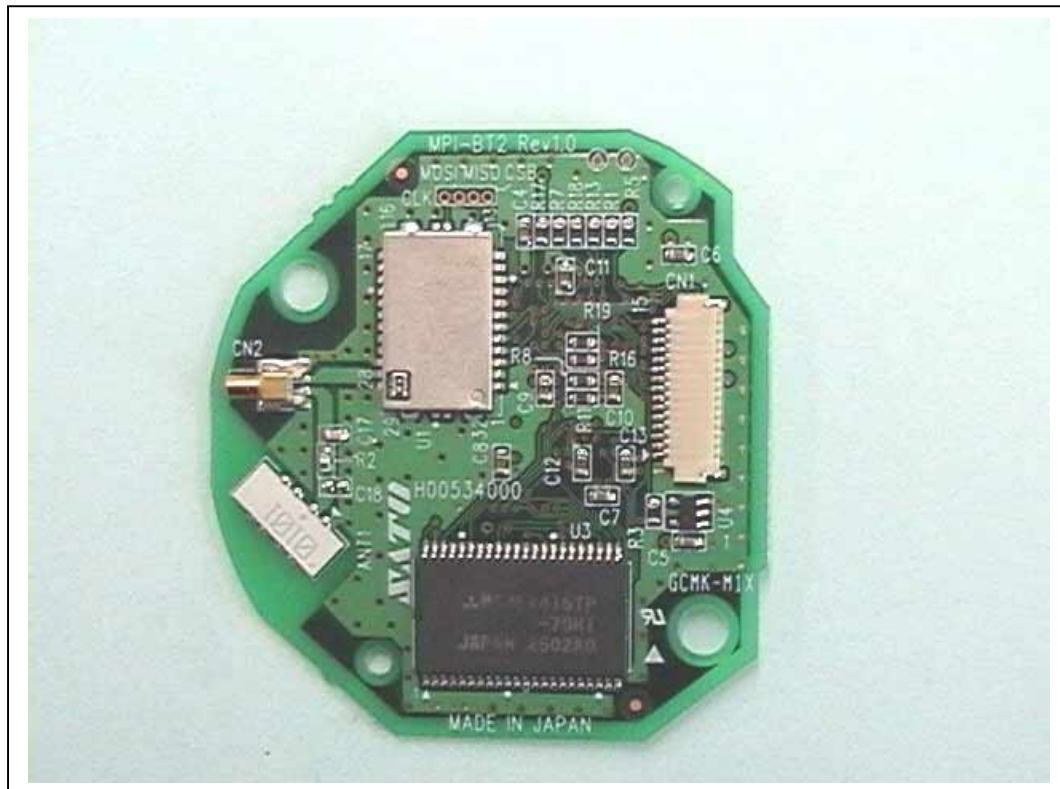
- Circuit Board 3 (A side) -



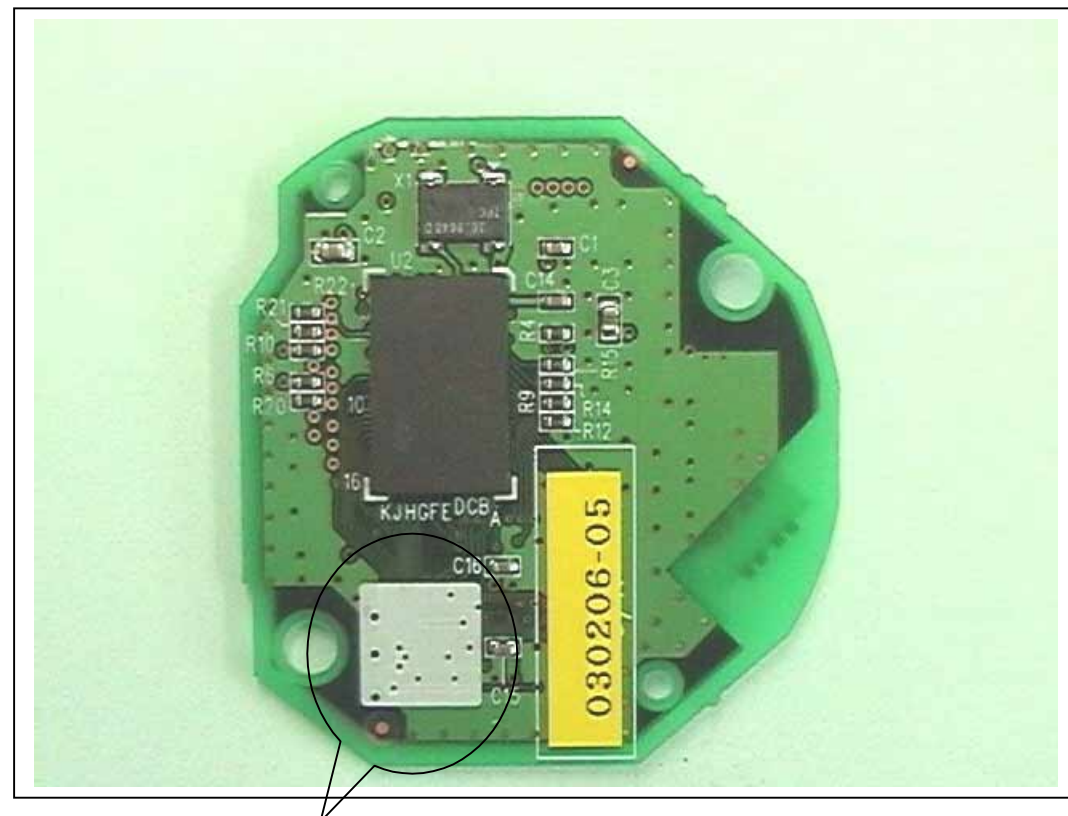
- Circuit Board 3 (B side) -



- TX Circuit Board (A side) -

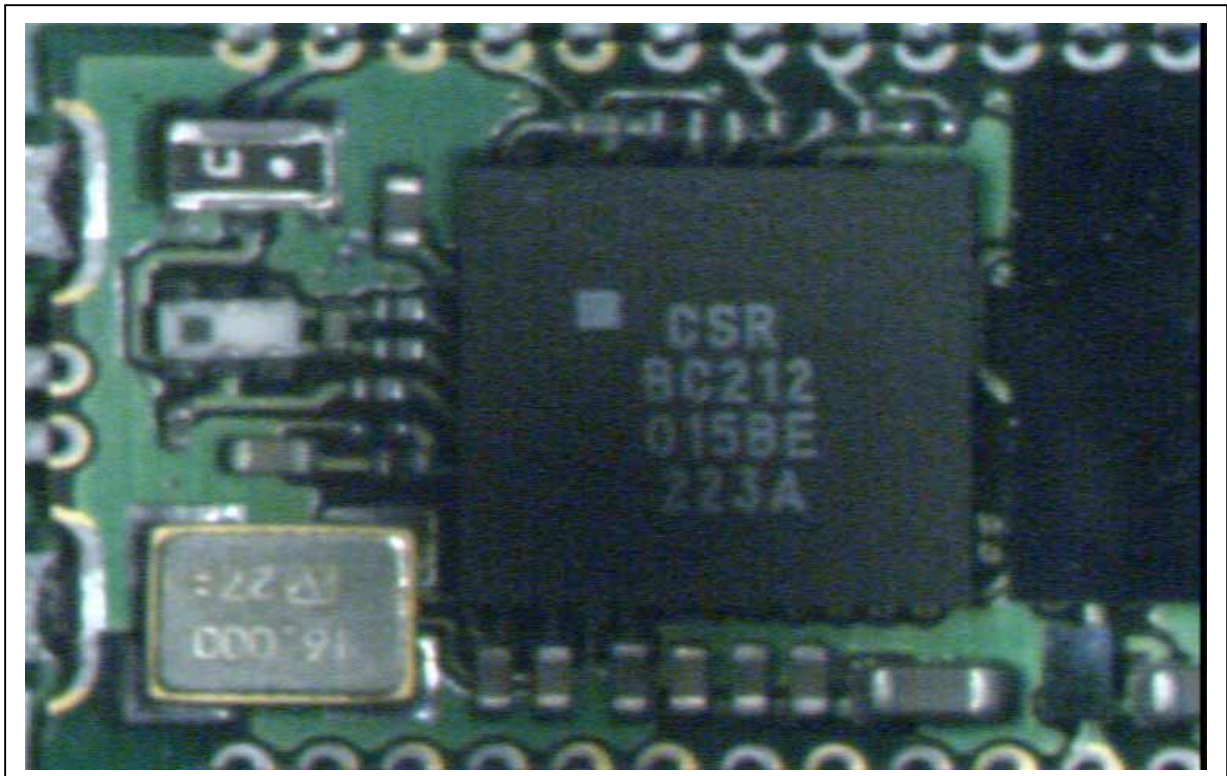


- TX Circuit Board (B side) -



Remove the shielded cover on next page-

- Remove the shielded cover (1) -



- Remove the shielded cover (2) -

