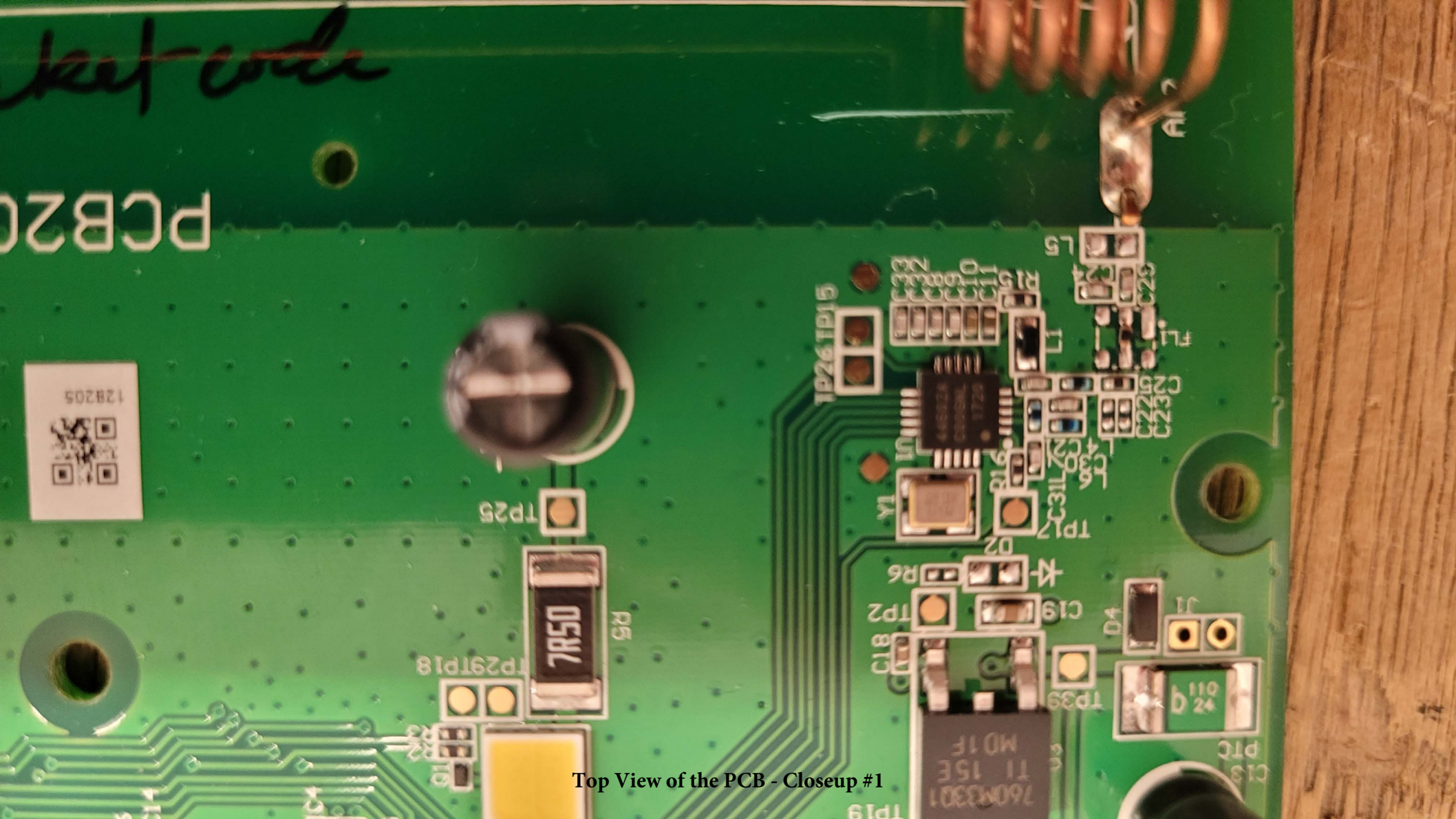


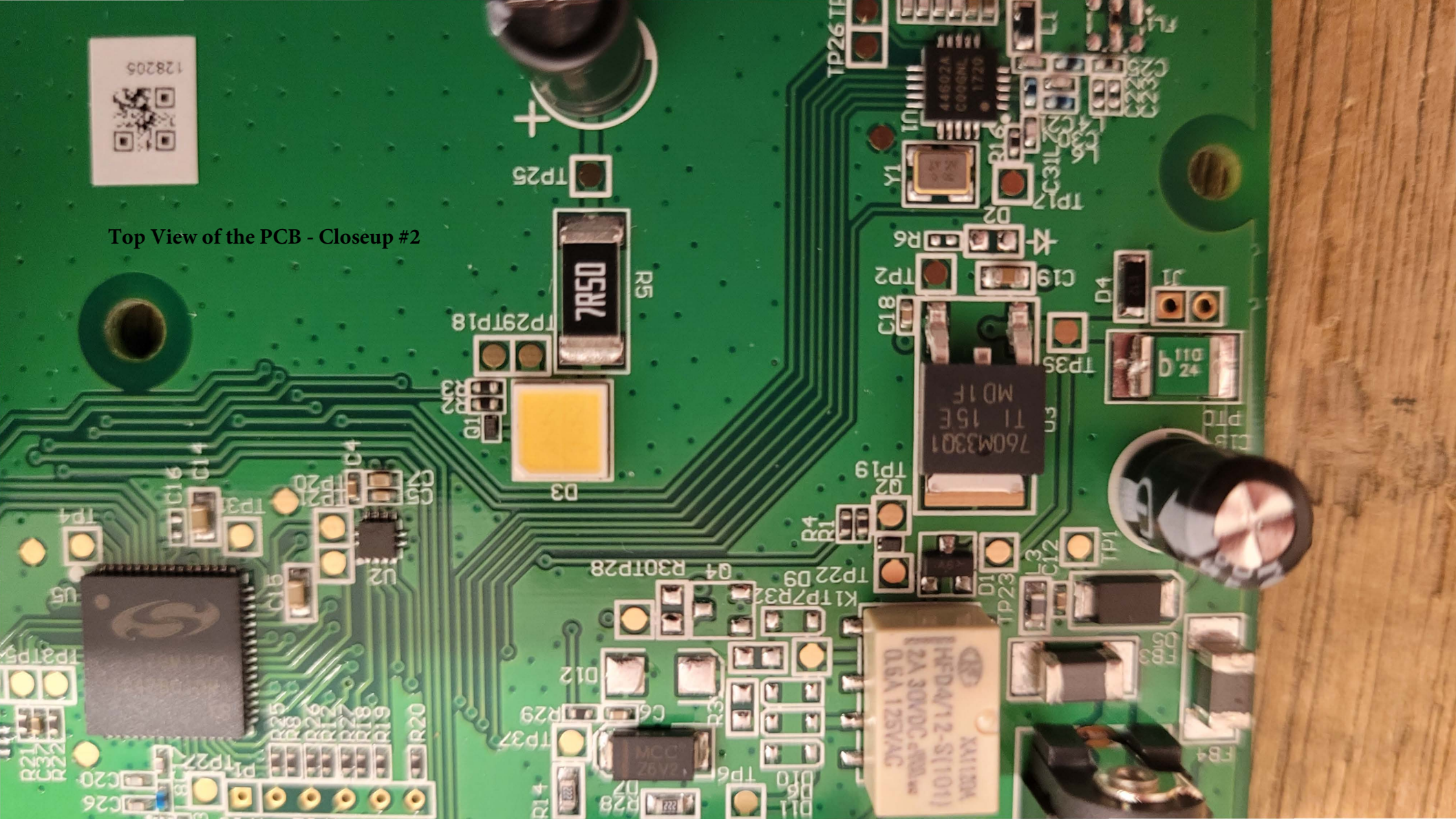


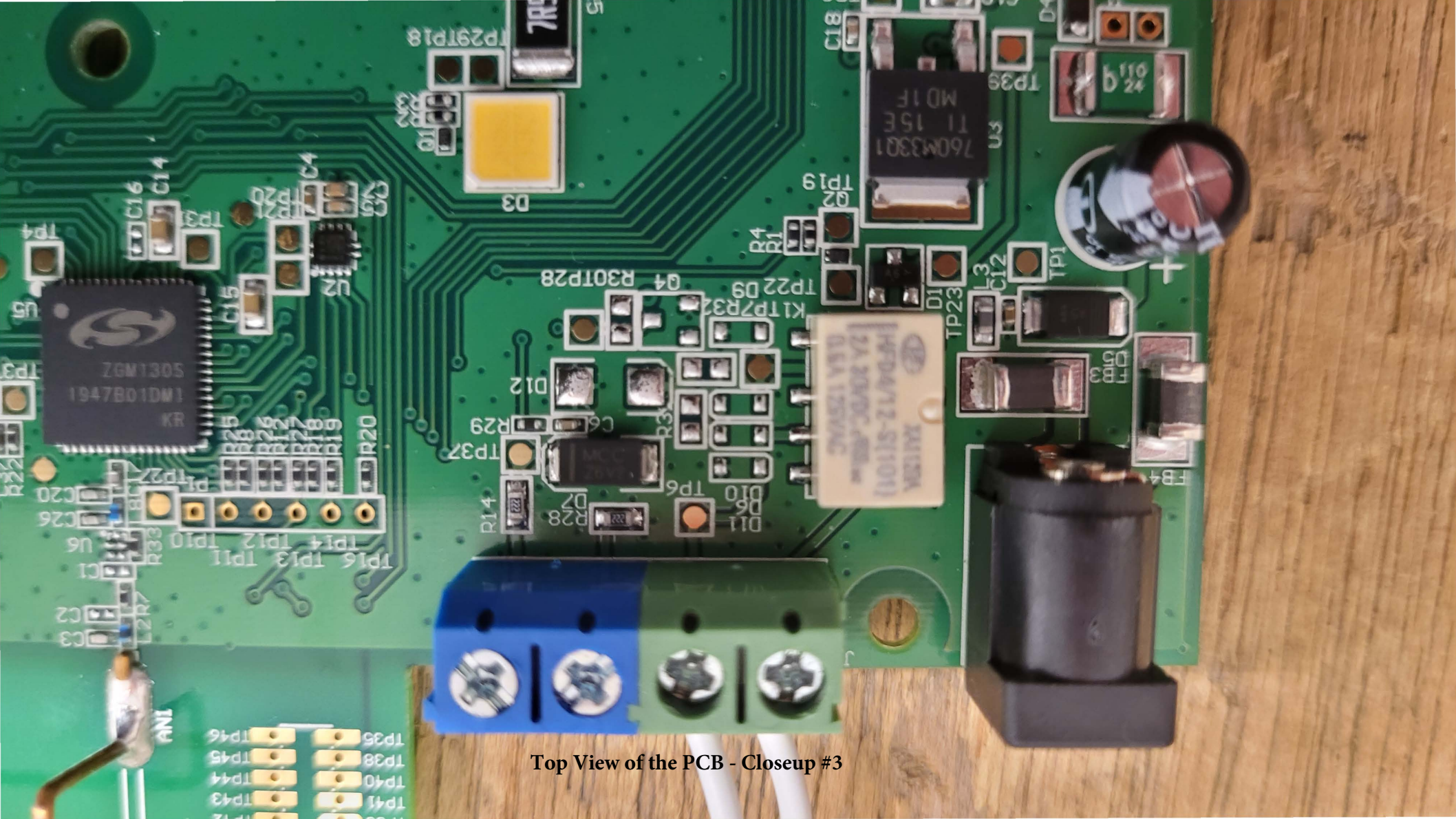


Top View of the PCB - View #2

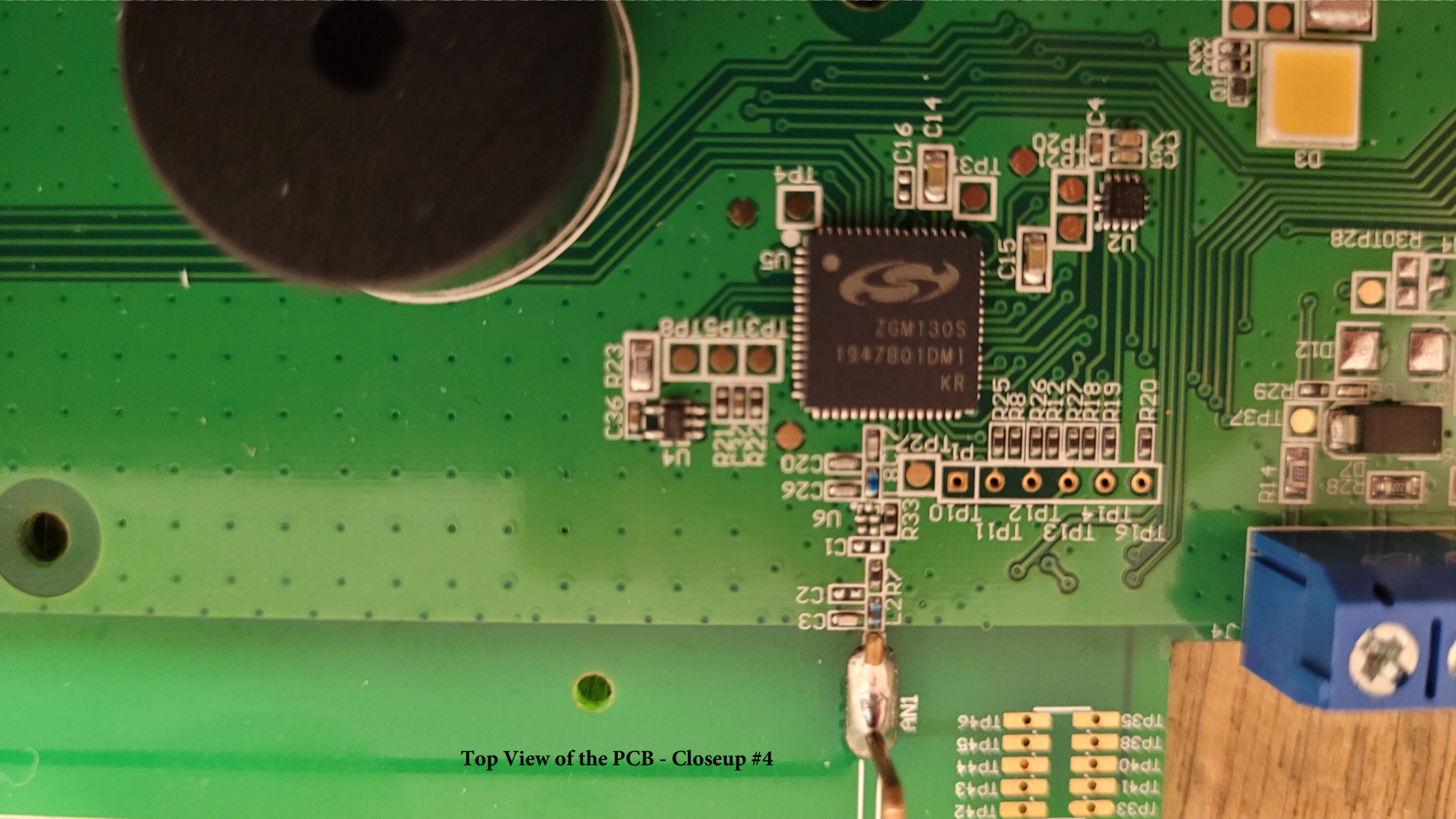


Top View of the PCB - Closeup #2

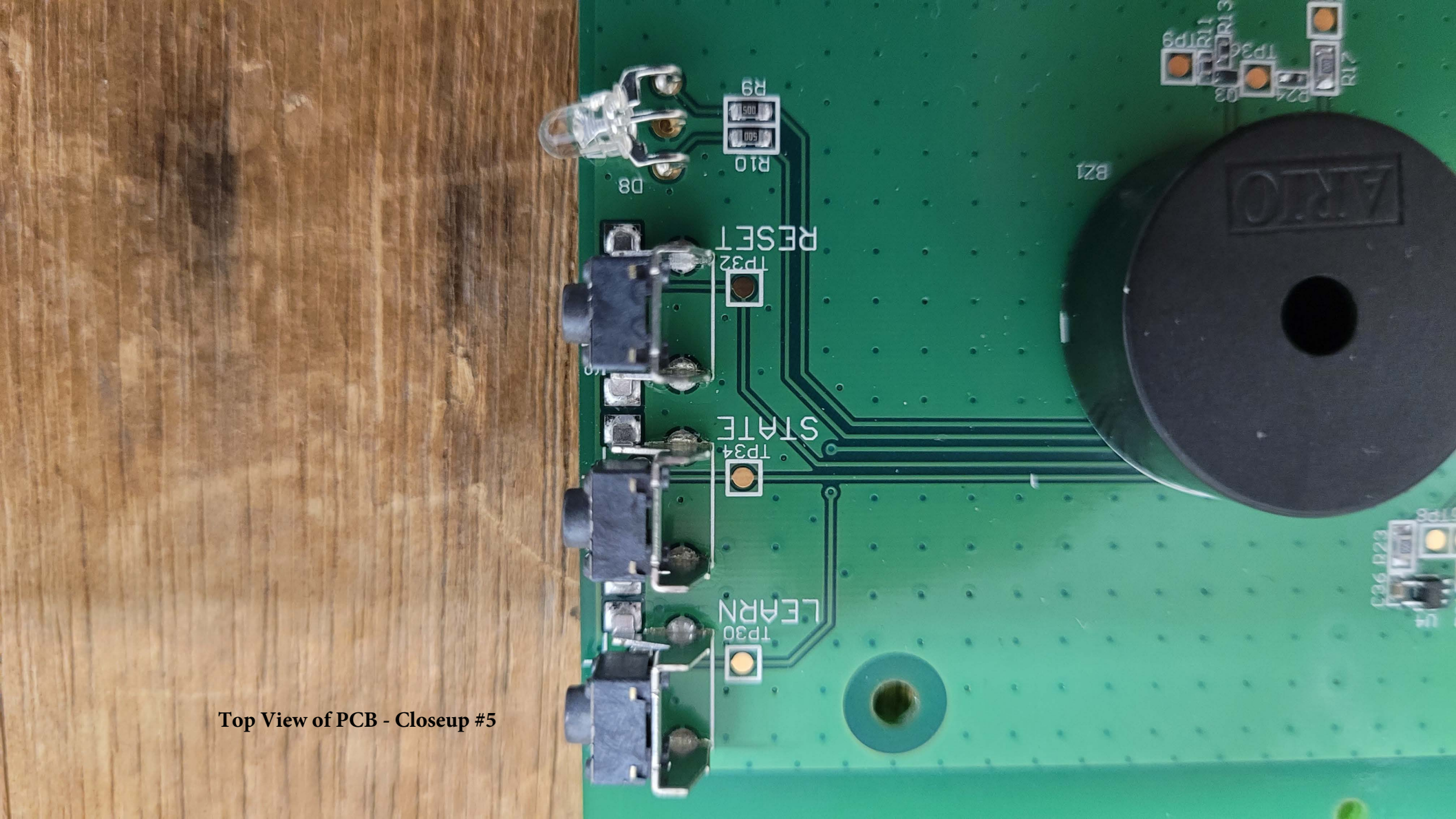




Top View of the PCB - Closeup #3



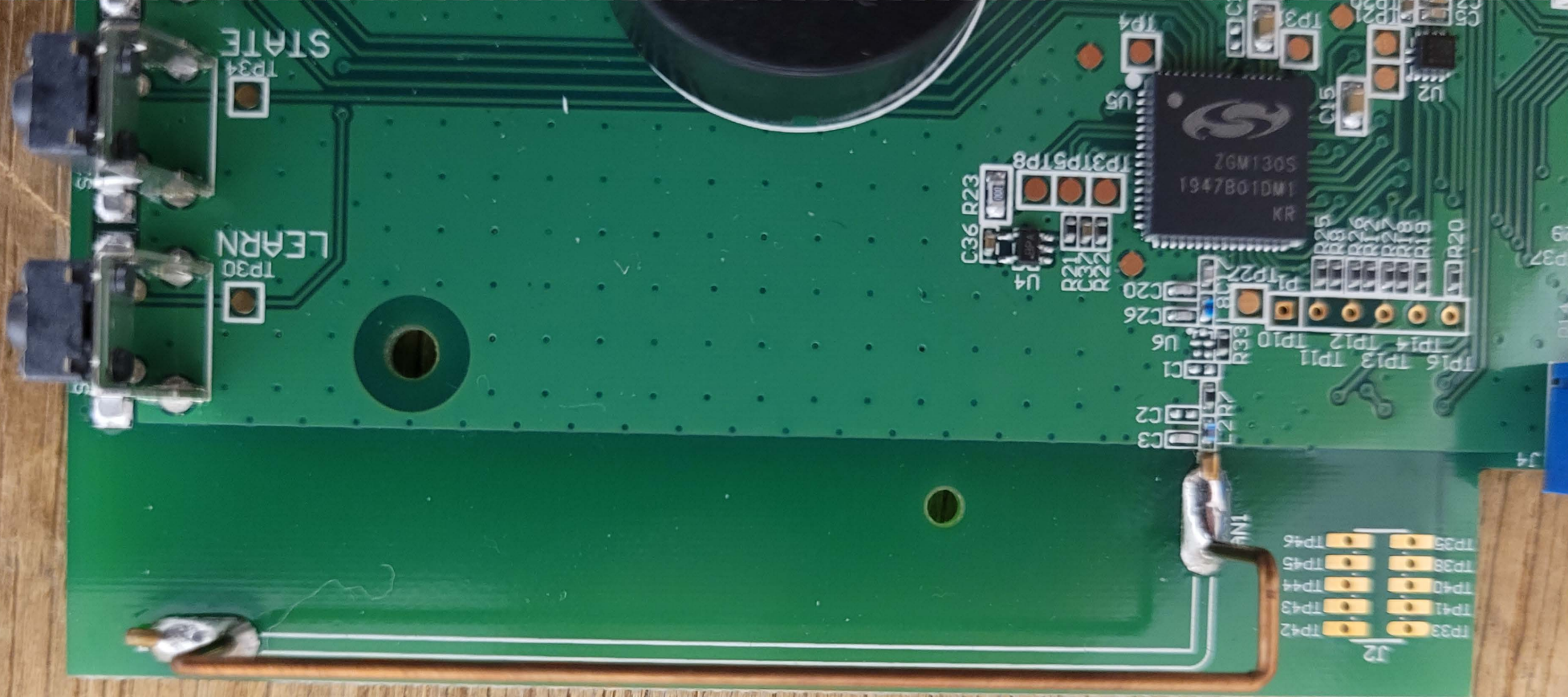
Top View of the PCB - Closeup #4



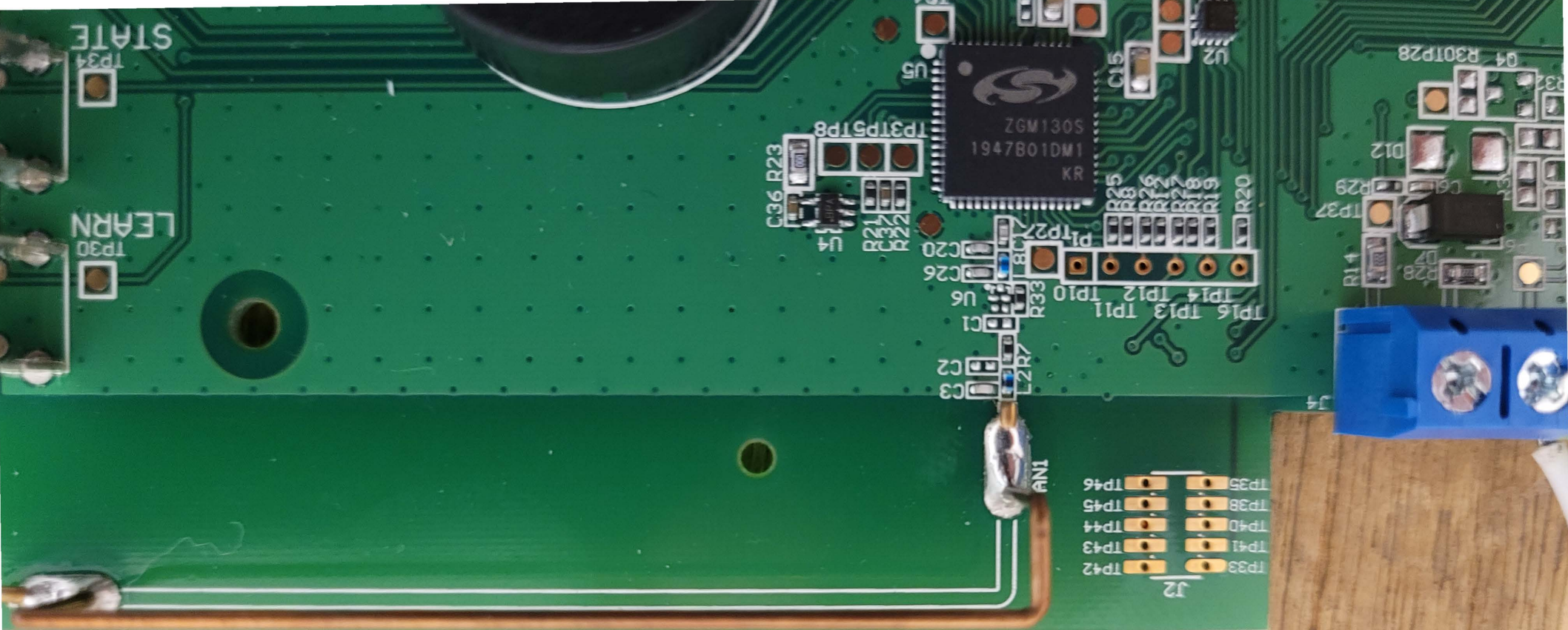
Top View of PCB - Closeup #5

Top View of PCB - Closeup #6

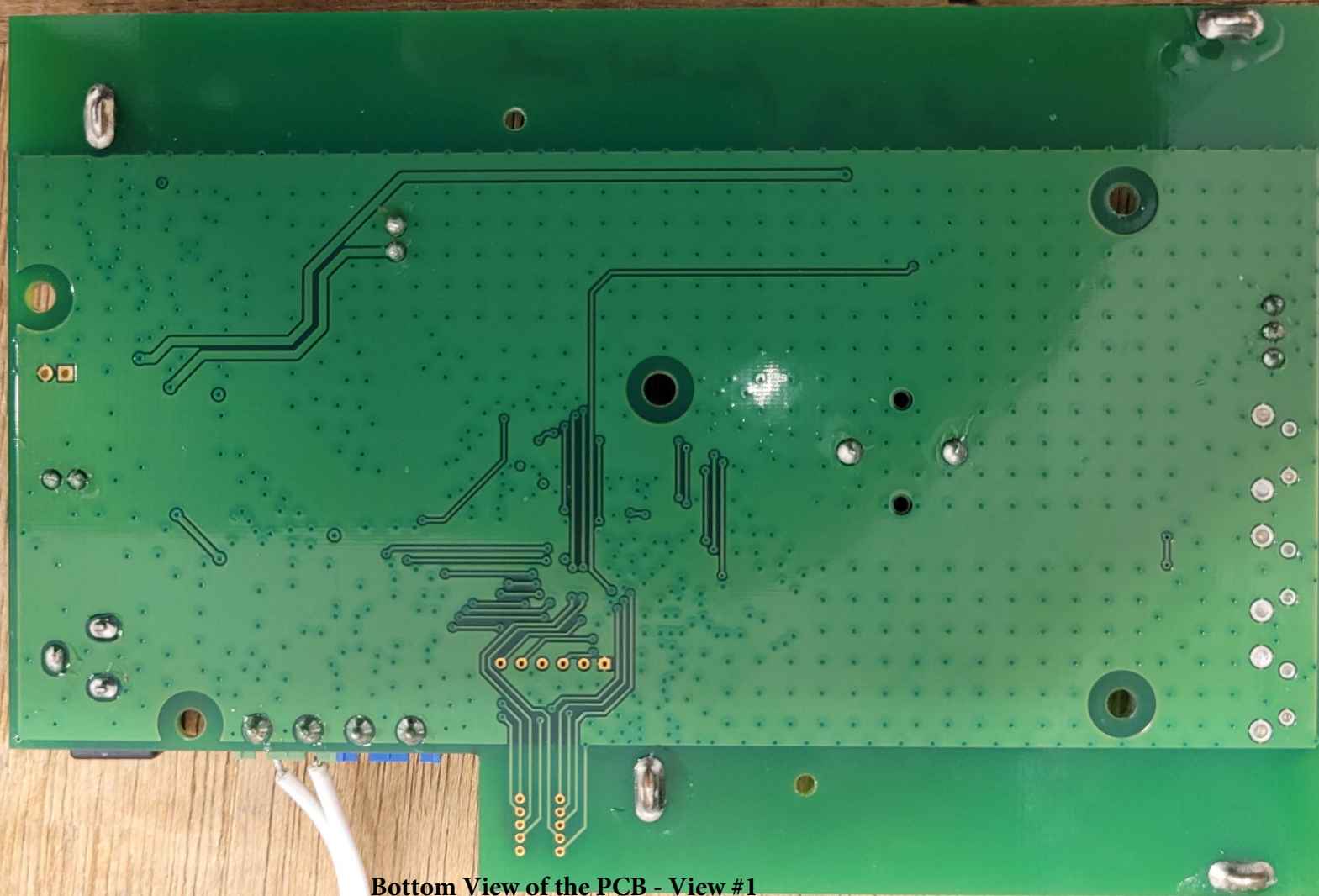




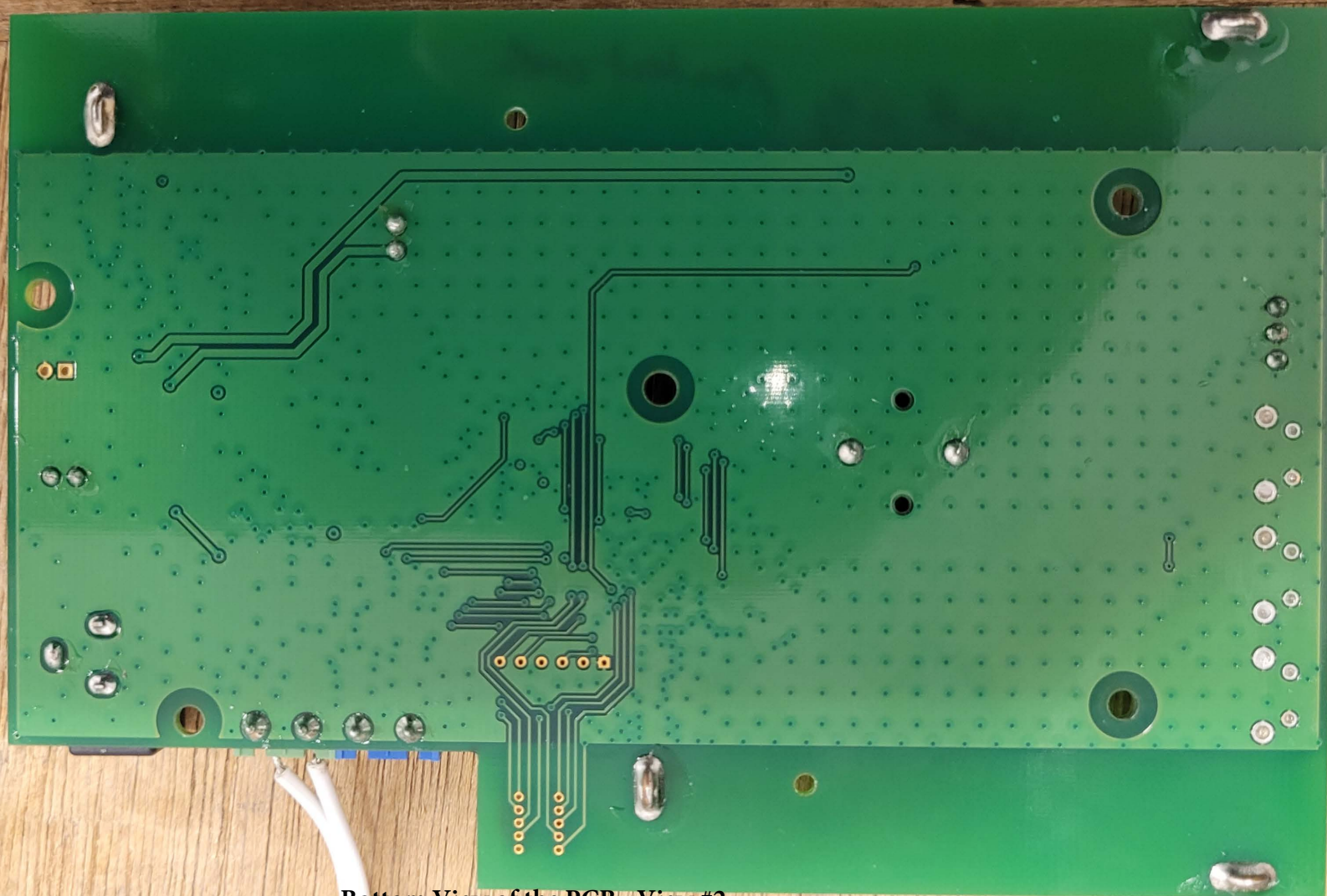
Top View of the PCB - Closeup #7



Top View of the PCB - Closeup #8



Bottom View of the PCB - View #1



Bottom View of the PCB - View #2