

# Shenzhen Lingdong Intelligent Technology Co., Ltd

## UL05-Mini-R

Customer:

Sample Name: Bluetooth Music&APP

Sample Number: UL05-Mini-R

Signature:

DATE:

TESTED BY	CHECKED BY	APPROVED BY
MARK	WELL	JIAN

Customer Signature:

TESTED BY	CHECKED BY	APPROVED BY

PCB Size: 54.0mm\*33.0mm\*1.6mm

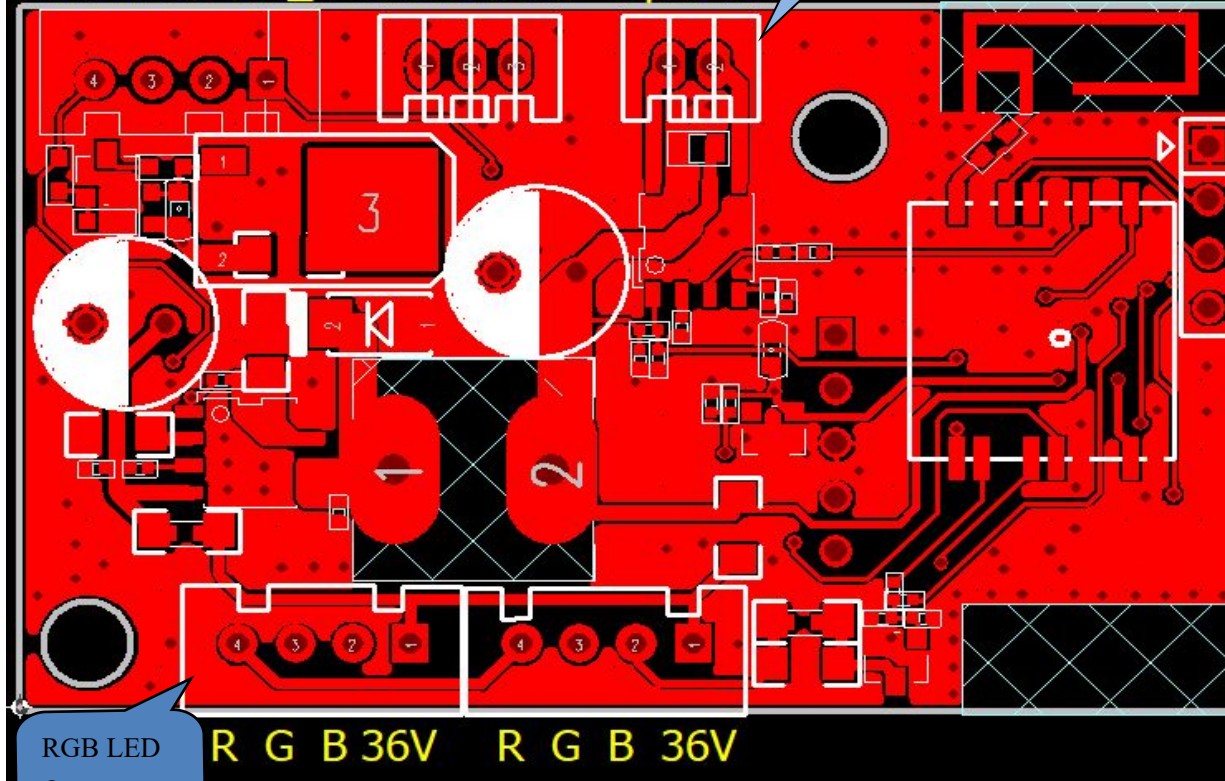
Power input  
2.54mm X4

BLE APP UART  
2.0mm X3

TOP Layer

Speaker Output  
2.0mm X2

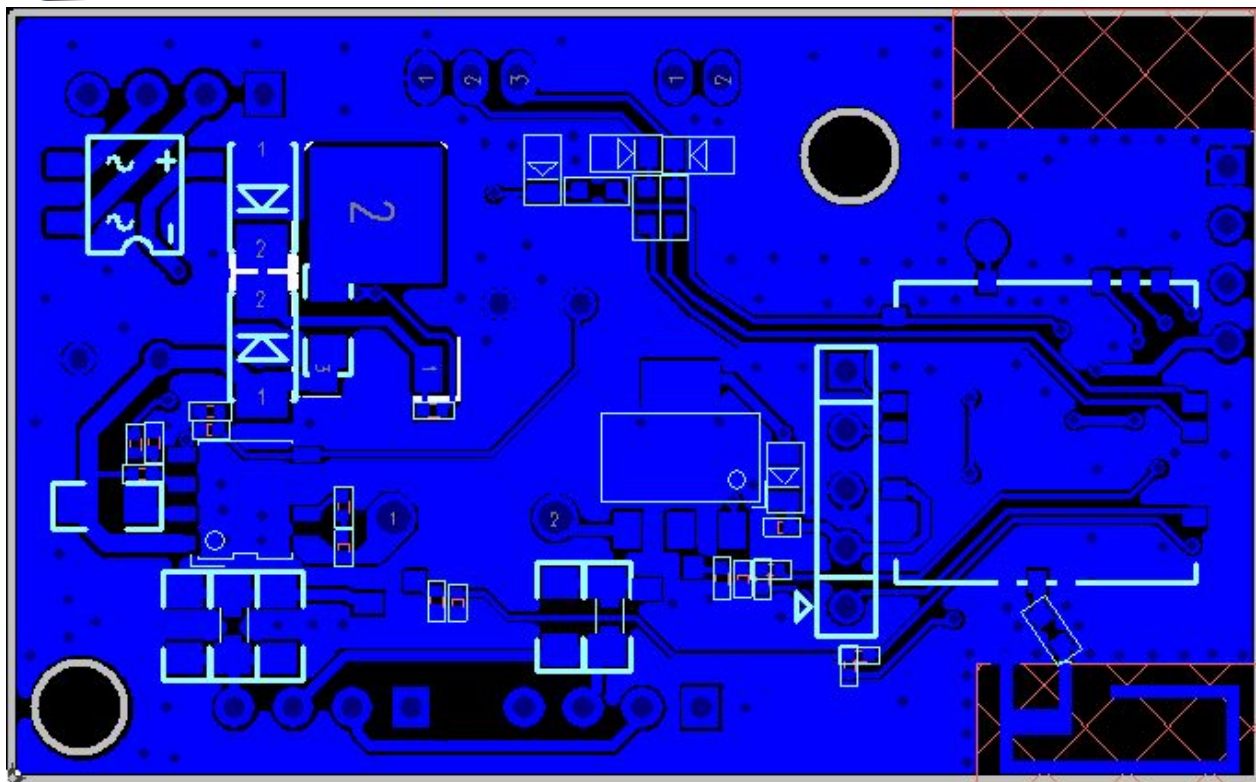
EN VBAT RX\_1 GND RX TX Speaker



RGB LED  
Output  
2.54mmX4

R G B 36V R G B 36V

Bottom layer



**Function:**

- 1、Driving 36V RGB LED;
- 2、Bluetooth Music&APP;
- 3、Mono Output;

**Port specification:****Power input**

EN: Enable input boot up

VBAT: Power &Ground Input

RX\_1: UART TX Input

**BLE APP UART:**

GND:Power Ground

RX:BLE UART RX

TX:BLE UART TX

Speaker :Speaker Output

**RGB LED Port:**

R: Red light signal output

G: Green light signal output

B: Blue light signal output

36V: 25V-42V Power Output

**Product specification:**

Input voltage range: 15V~42.5V

Enable input voltage range: 3.3V~5V

Hardware version: V2.12  
Speaker Spec: 4Ω 3W、2Ω 5W  
Operating Ambient Temperature: -20 ~ +80℃  
Frequency: 2.402GHz~2.480GHz

FCC Warning: Changes or modifications to this unit not expressly approved by the party responsible for compliance could void the user's authority to operate the equipment.

NOTE: This equipment has been tested and found to comply with the limits for a Class B digital device, pursuant to Part 15 of the FCC Rules. These limits are designed to provide reasonable protection against harmful interference in a residential installation. This equipment generates, uses and can radiate radio frequency energy and, if not installed and used in accordance with the instructions, may cause harmful interference to radio communications.

However, there is no guarantee that interference will not occur in a particular installation. If this equipment does cause harmful interference to radio or television reception, which can be determined by turning the equipment off and on, the user is encouraged to try to correct the interference by one or more of the following measures:

- ✂ Reorient or relocate the receiving antenna.
- ✂ Increase the separation between the equipment and receiver.
- ✂ Connect the equipment into an outlet on a circuit different from that to which the receiver is connected.
- ✂ Consult the dealer or an experienced radio/TV technician for help.

This device complies with Part 15 of the FCC Rules. Operation is subject to the following two conditions : (1) this device may not cause harmful interference, and

(2) this device must accept any interference received, including interference that may cause undesired operation.