

Measurement Report for WLAN 2.4GHz, BACK

Exposure Conditions

Band	WLAN 2.4GHz	TSL Permittivity	39.8
Frequency [MHz] Channel Number	2437.000 6	TSL Conductivity [S/m]	1.79
Group UID	WLAN 10418-AAA	Phantom Section TSL	Flat HSL
Conversion Factor	7.73	Test Distance [mm]	0.00
Communication Configuration	IEEE 802.11g WiFi 2.4 GHz (DSSS-OFDM, 6 Mbps, 99pc duty cycle)		

Hardware Setup

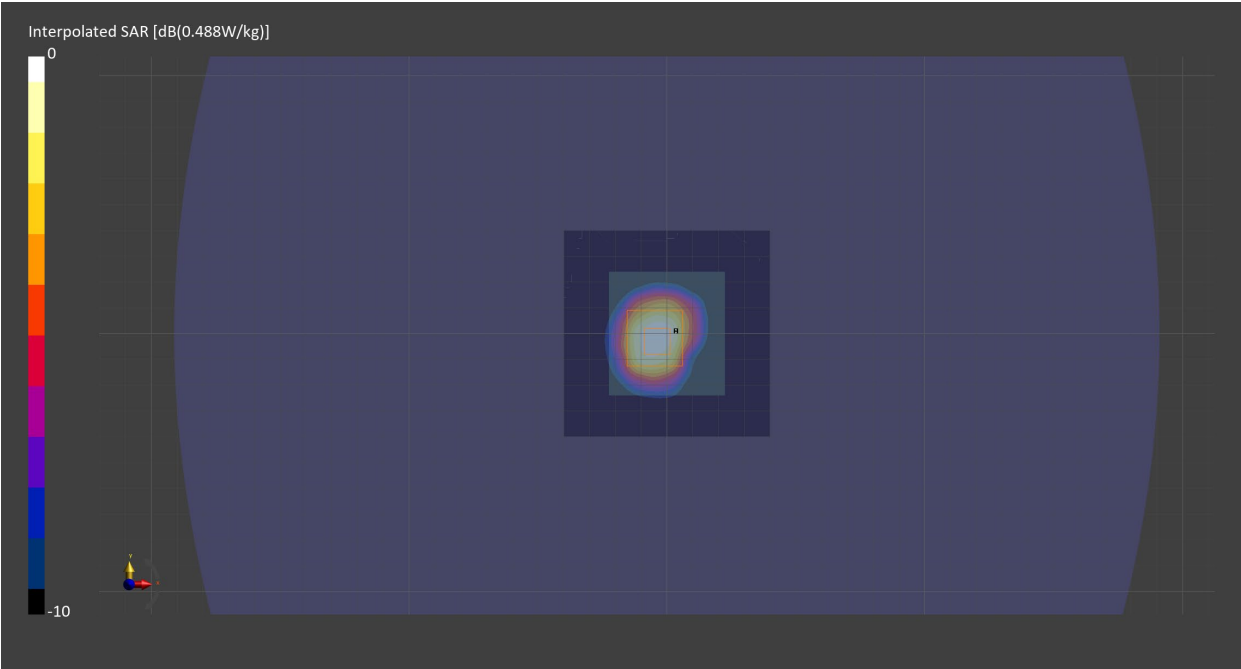
Probe Calibration Date	EX3DV4 - SN7709 2024-11-11	Phantom	ELI V5.0 (20deg probe tilt) - SN1196
DAE Calibration Date	DAE4 Sn1714 2024-11-06	TSL	HBBL-600-10000

Scans Setup

	Area Scan	Zoom Scan
Grid Extents [mm]	80.0 x 80.0	30.0 x 30.0 x 30.0
Grid Steps [mm]	10.0 x 10.0	5.0 x 5.0 x 1.5
Sensor Surface [mm]	3.0	1.4
Graded Grid	N/A	Yes
M2/M1 [%]		85.9
Dist 3dB Peak [mm]		9.5

Measurement Results

	Area Scan	Zoom Scan
psSAR1g [W/Kg]	0.275	0.283
psSAR10g [W/Kg]	0.128	0.132
Power Drift [dB]	-0.01	-0.05



Measurement Report for Custom Band, BACK, NFC

Exposure Conditions

Band	Custom Band	TSL Permittivity	54.2
Frequency [MHz] Channel Number	13.600 13600	TSL Conductivity [S/m]	0.715
Group UID	CW 0--	Phantom Section TSL	Flat Head Simulating Liquid
Conversion Factor	15.55	Test Distance [mm]	0.00

Communication Configuration

CW

Hardware Setup

Probe Calibration Date	EX3DV4 - SN7709 2024-11-11	Phantom	ELI V8.0 (20deg probe tilt) - SN2081
DAE Calibration Date	DAE4 Sn1714 2024-11-06	TSL	HBBL4-250V3

Scans Setup

	Area Scan	Zoom Scan
Grid Extents [mm]	90.0 x 90.0	30.6 x 30.6 x 31.2
Grid Steps [mm]	15.0 x 15.0	1.8 x 1.8 x 1.2
Sensor Surface [mm]	3.0	1.4
Graded Grid	N/A	Yes
M2/M1 [%]		
Dist 3dB Peak [mm]		

Measurement Results

	Area Scan	Zoom Scan
psSAR1g [W/Kg]	0	0
psSAR10g [W/Kg]	0	0
Power Drift [dB]	N/A	N/A

