

Antenna specification

Manufacture's: Shenzhen Xingmi Intelligent Products Co., LTD

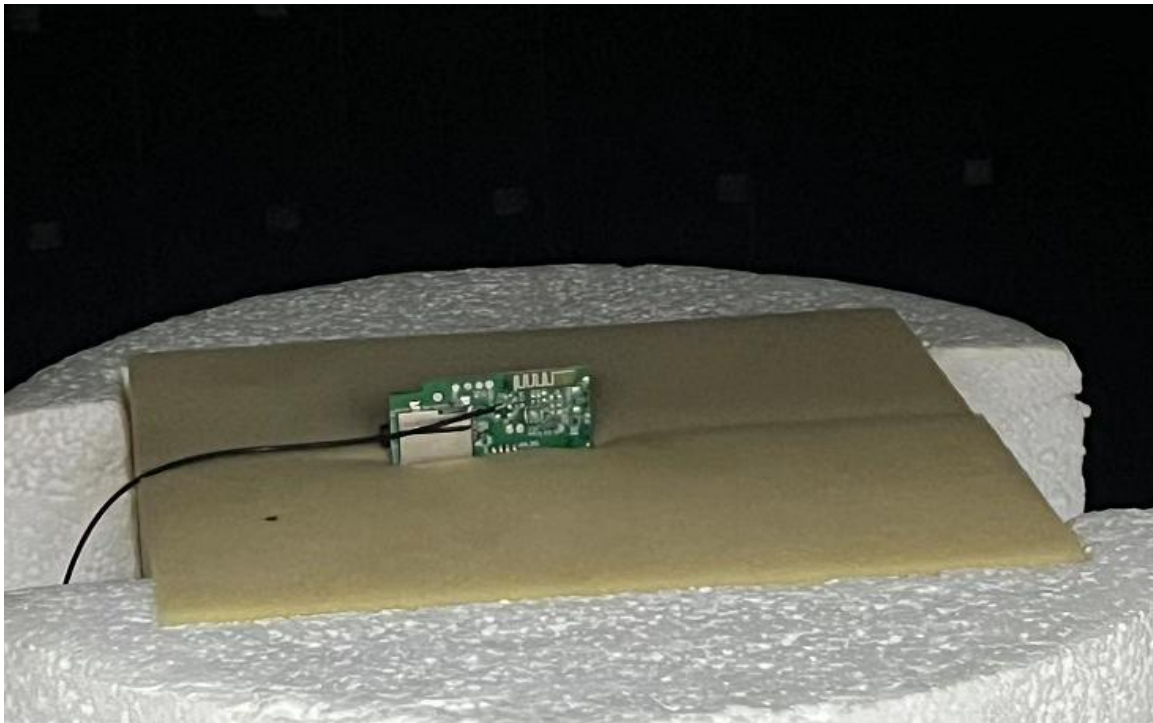
- 1、Hardware test
- 2、Software testing
- 3、Data reading

1、Hardware test

1.1 、PCBA bare-board testing

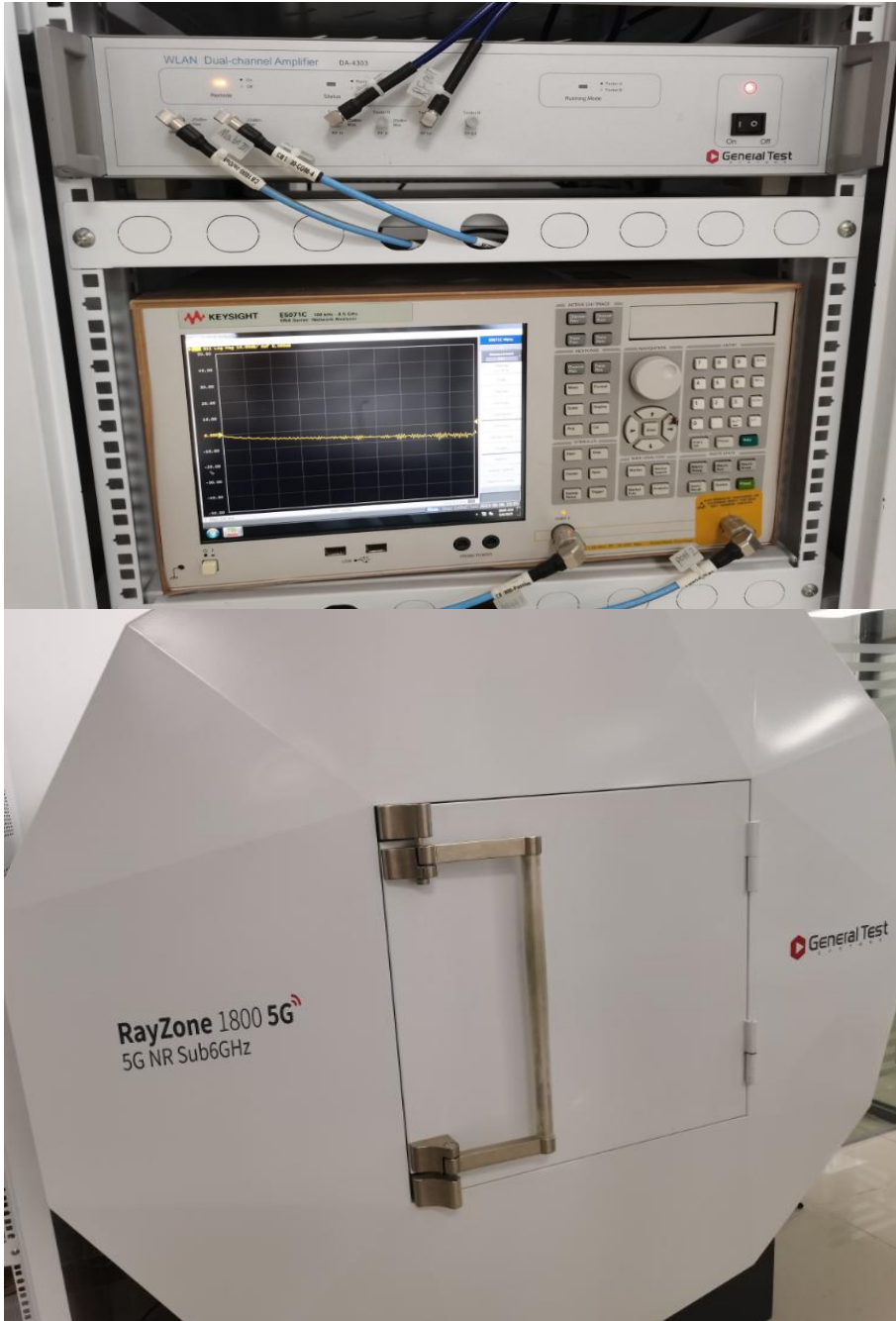
Solder the RF cable to the bare board and connect it to the OTA device.

The following figure shows the connection between the RF cable and the bare board:

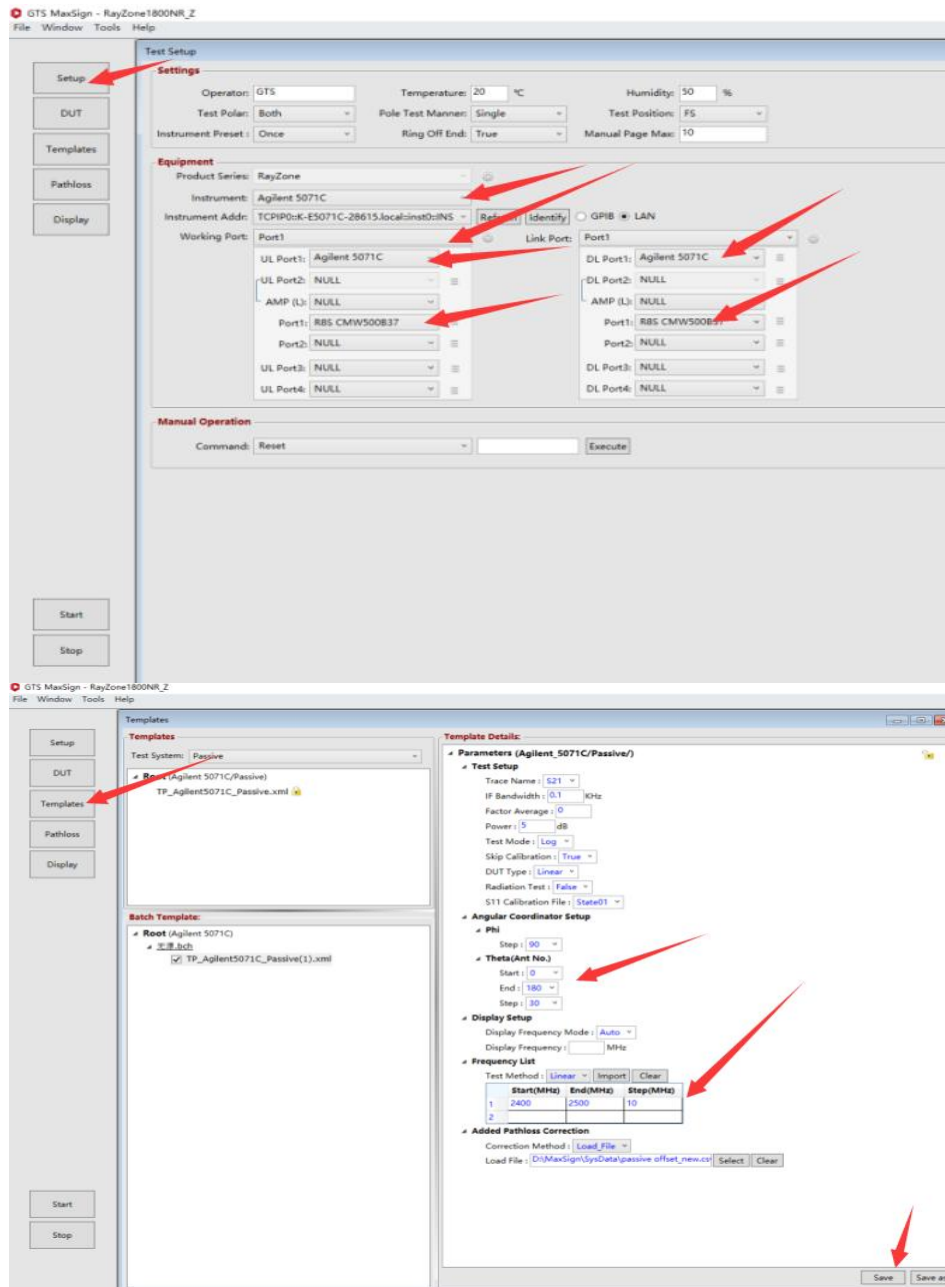


1.2 、 Facility environment

The equipment required for this test includes computer, spectrometer, amplifier and darkroom, as shown below:



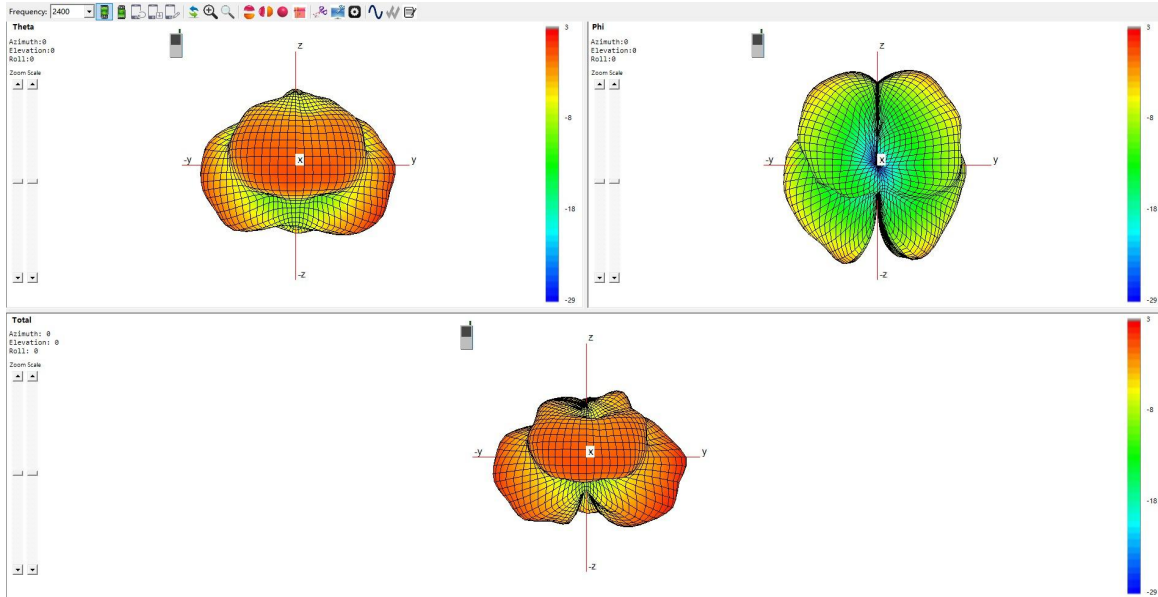
2. Software testing



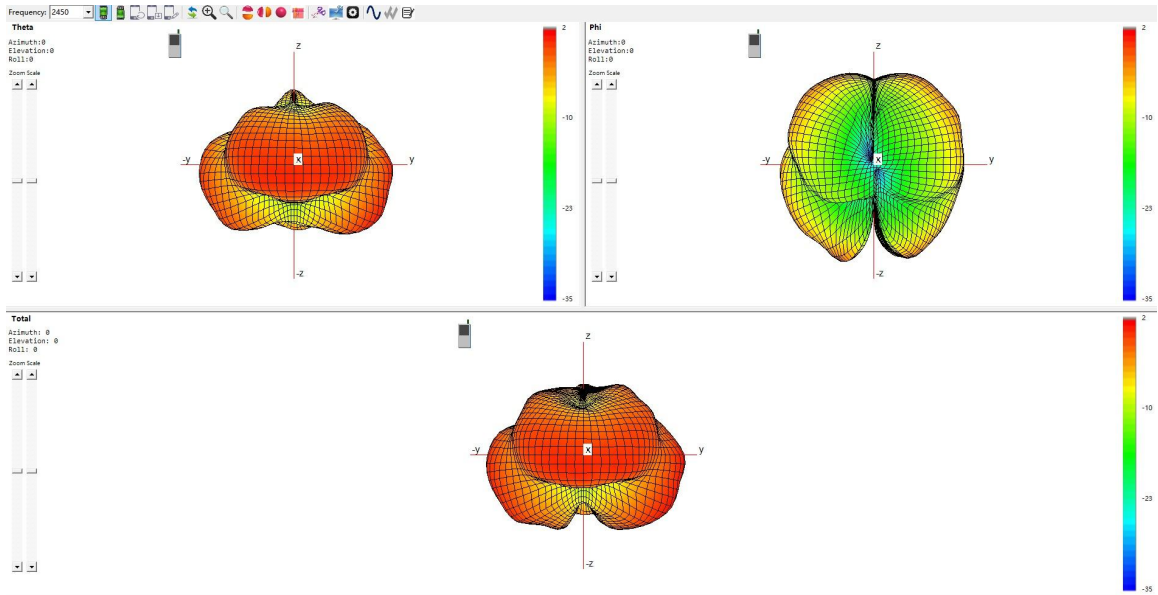
3、Data reading

3.1、 can the antenna for 3D radiation

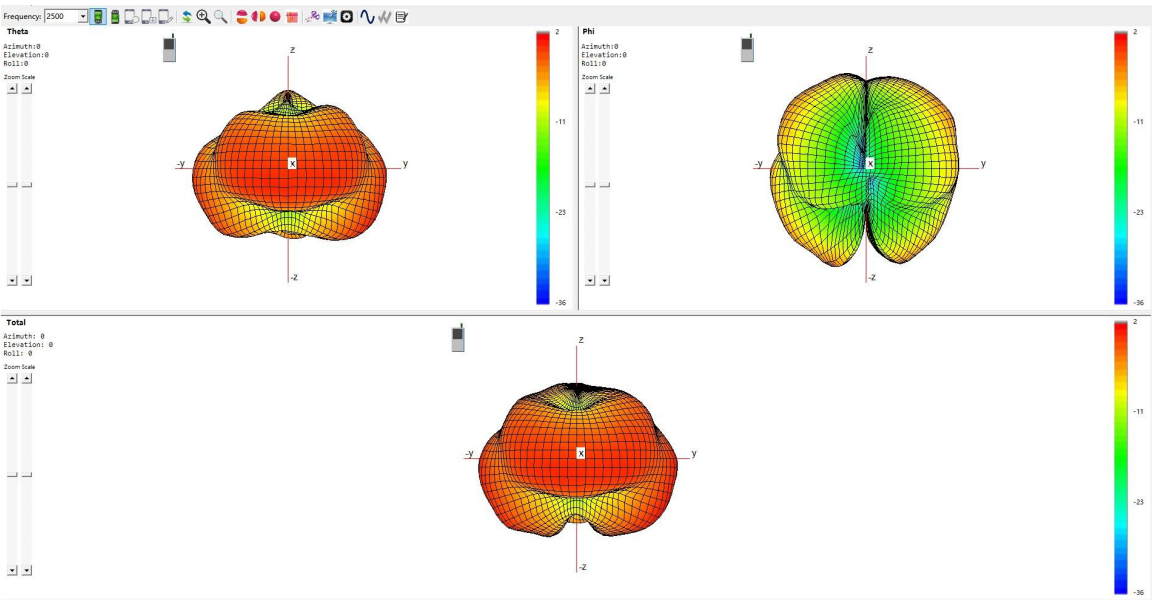
2400MHz:



2450MHz:



2500MHz



Summary

ITEM	ANT SPEC		
Model Name	2.4G ANT		
Antenna plate	PCB antenna		
Center Frequency	2400MHz	2450MHz	2500MHz
	2.13dBi	1.41dBi	1.26dBi
MAX. Gain	2.13dBi		
Polarization	Horizontal and Vertical		
Impedance	50Ohm		
Manufacture			

AntennaPhoto&Length(mm)

