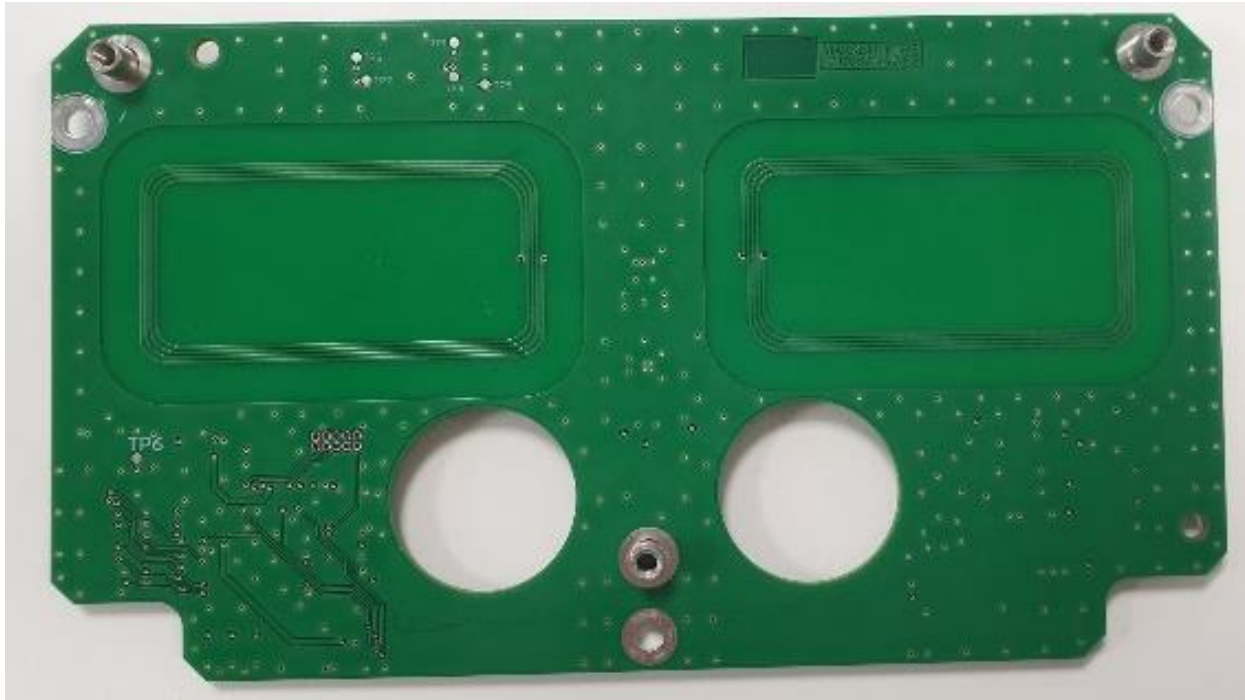


Markem-Image RFID module RMCIJ1





RMCIJ1 is a RFID module integrated in Markem-Imaje CIJ printers which ensures the authenticity and reliability of ink and additive cartridges

An RFID tag is fitted to each ink cartridge and contains the set-up information of the cartridge as required by the printer.

Thanks to this RFID module, the printer reads the RFID tag during the calibration process and 'pairs' with the cartridge.

Technical features

RFID radio frequency : 13.56MHz

Electrical Rating: 5V, 25 mW

Operating temperature: 0°C to +50°C (+32°F to +122°F)

Storage temperature: -10°C to +55°C (14°F to 131°F)

RFID module weight: 50 g

Integrated Antenna dimensions : 25 mm x 50 mm

Not sold separately, only integrated in Markem-Imaje CIJ printers.

Regulatory Statements

Radio

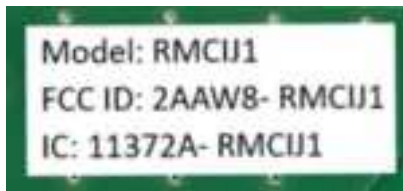
An RFID tag is fitted to each ink cartridge and contains the set-up information of the cartridge as required by the printer.

The printer reads the RFID tag during the calibration process and 'pairs' with the cartridge.

The RFID radio frequency is 13.56MHz with a maximum power limit of 25mW from the antenna.

The use of micro-power short-range radio transmission equipment shall comply with the relevant provisions of the China national radio administration.

Label



FCC certification

The RMCIJ1 module complies with part 15 of the FCC Rules.

The FCC ID is **2AAW8-RMCIJ1**

The module label includes the corresponding FCC ID.

The operation is subject to the following two conditions:

- This device may not cause harmful interference
- This device must accept any interference received, including interference that may cause undesired operation.

Note: This equipment has been tested and found to comply with the limits for a Class B digital device, pursuant to part 15 of the FCC Rules. These limits are designed to provide reasonable protection against harmful interference in a residential installation.

Label requirements

If the identification number is not visible when the module is installed inside another device, then the outside of the device into which the module is installed must also display a label referring to the enclosed module. This label must contain the FCC ID that matches the one on the module.

Documentation requirements

The user manual or instruction manual for an intentional or unintentional radiator shall caution the user that changes or modifications not expressly approved by the party responsible for compliance could void the user's authority to operate the equipment.

Integration requirements

Co-location of this module with other transmitters that operate simultaneously are required to be evaluated using the multi-transmitter procedures.

The host integrator must follow the integration instructions provided in this document and ensure that the composite-system end product complies with the requirements by a technical assessment or evaluation to the rules and to KDB Publication 996369.

The host integrator installing this module into their product must ensure that the final composite product complies with the requirements by a technical assessment or evaluation to the rules, including the transmitter operation and should refer to guidance in KDB 996369.

The radio module must be labelled as follows:

FCC ID: 2AAW8-RMCIJ1

Moreover, the host equipment must be labelled as follows:

Contains FCC ID: 2AAW8-RMCIJ1,

Contains IC: 11372A-RMCIJ1

Warning:

This module is used exclusively by Markem Imaje. This product and the antennas must be professionally installed

ISED certification

The STM32WB5MMG module has been tested and found compliant with the ISED RSS-210 and RSS-Gen rules.

The IC is **11372A-RMCIJ1**.

This module contains license-exempt transmitter(s) that comply with Innovation, Science and Economic Development Canada's license-exempt RSS(s). Operation is subject to the following two conditions:

- This module may not cause interference
- This module must accept any interference, including interference that may cause undesired operation of the module.

L'émetteur exempt de licence contenu dans le présent appareil est conforme aux CNR d'Innovation, Sciences et

Développement économique Canada applicables aux appareils radio exempts de licence. L'exploitation est autorisée aux deux conditions suivantes :

- L'appareil ne doit pas produire de brouillage.
- L'appareil doit accepter tout brouillage radioélectrique subi, même si le brouillage est susceptible d'en compromettre le fonctionnement.

The radio module must be labelled as follows:

IC: 11372A-RMCIJ1

Moreover, the host equipment must be labelled as follows:

Contains FCC ID: 2AAW8-RMCIJ1,

Contains IC: 11372A-RMCIJ1

Warning:

This module is used exclusively by Markem Imaje. This product and the antennas must be professionally installed

RFID: Radio Frequency Identification

FCC : Federal Communications Commission – USA

ISED : Innovation, Science and Economic Dvlpt- Canada