

Measurement Report for ISM 2.4 GHz Band, BACK, WS50 Standalone

Exposure Conditions

Band	ISM 2.4 GHz Band	TSL Permittivity	37.4
Frequency [MHz]   Channel Number	2440.000   17	TSL Conductivity [S/m]	1.77
Group   UID	Bluetooth   10670-AAA	Phantom Section   TSL	Flat   HSL
Conversion Factor	8.28	Test Distance [mm]	0.00
Communication Configuration		Bluetooth Low Energy	

Hardware Setup

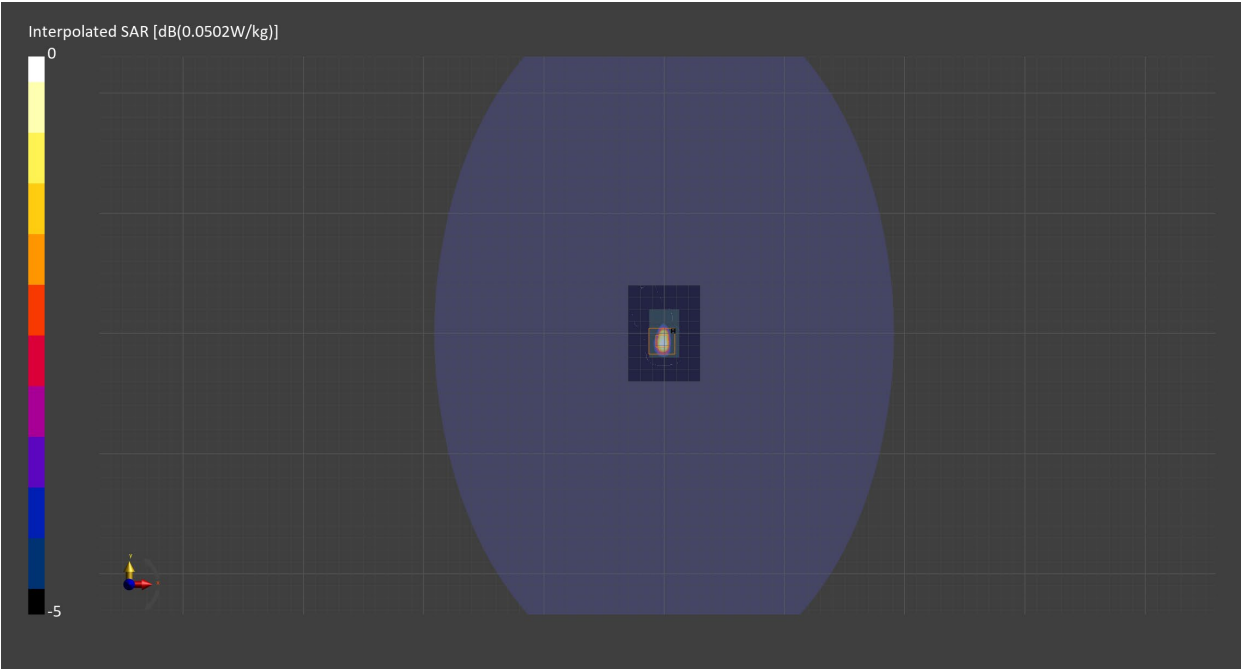
Probe   Calibration Date	EX3DV4 - SN7711   2024-03-15	Phantom	ELI V8.0 (20deg probe tilt) - SN2160
DAE   Calibration Date	DAE4 Sn1716   2024-03-13	TSL   Meas. Date	HBBL600-10000V6   2024-Jun-17

Scans Setup

	Area Scan	Zoom Scan
Grid Extents [mm]	60.0 x 80.0	30.0 x 30.0 x 30.0
Grid Steps [mm]	10.0 x 10.0	4.2 x 4.2 x 1.5
Sensor Surface [mm]	3.0	1.4
Graded Grid	N/A	Yes
M2/M1 [%]		77.1
Dist 3dB Peak [mm]		5.1

Measurement Results

	Area Scan	Zoom Scan
psSAR1g [W/Kg]	0.035	0.036
psSAR10g [W/Kg]	0.012	0.011
Power Drift [dB]	0.34	-0.20



Measurement Report for ISM 2.4 GHz Band, BACK, WB50 Standalone

Exposure Conditions

Band	ISM 2.4 GHz Band	TSL Permittivity	37.4
Frequency [MHz]   Channel Number	2440.000   17	TSL Conductivity [S/m]	1.77
Group   UID	Bluetooth   10670-AAA	Phantom Section   TSL	Flat   HSL
Conversion Factor	8.28	Test Distance [mm]	0.00
Communication Configuration		Bluetooth Low Energy	

Hardware Setup

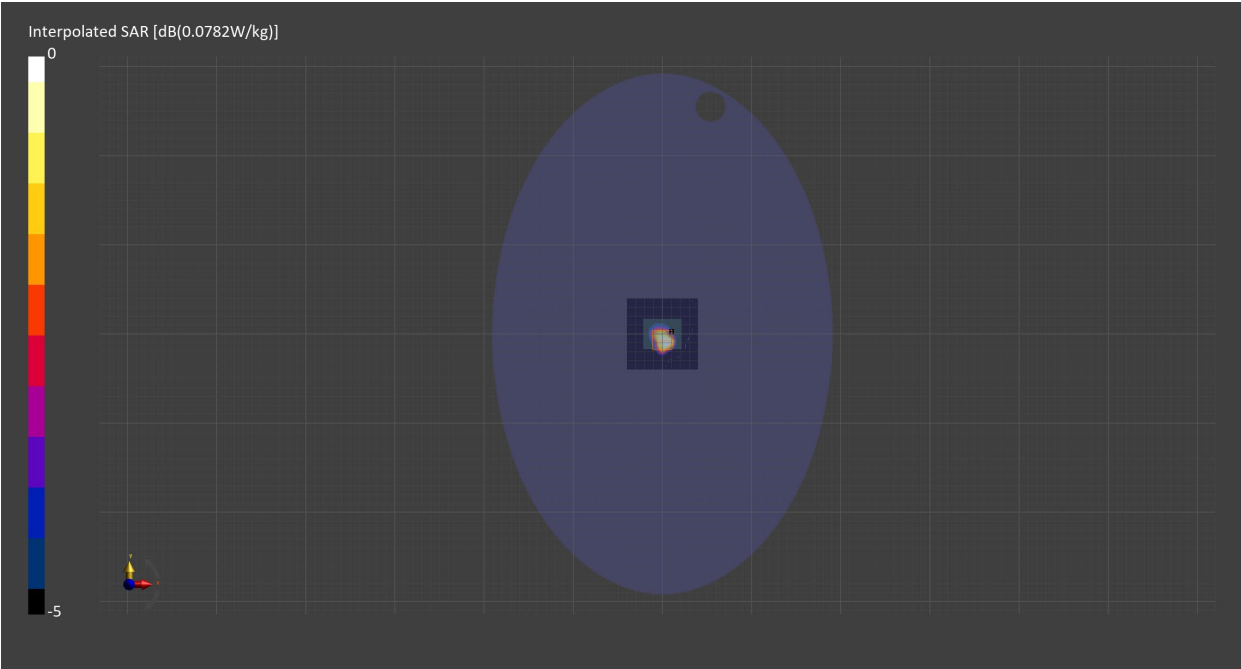
Probe   Calibration Date	EX3DV4 - SN7711   2024-03-15	Phantom	ELI V8.0 (20deg probe tilt) - SN2160
DAE   Calibration Date	DAE4 Sn1716   2024-03-13	TSL   Meas. Date	HBBL600-10000V6   2024-Jun-17

Scans Setup

	Area Scan	Zoom Scan
Grid Extents [mm]	80.0 x 80.0	30.0 x 30.0 x 30.0
Grid Steps [mm]	10.0 x 10.0	5.0 x 5.0 x 1.5
Sensor Surface [mm]	3.0	1.4
Graded Grid	N/A	Yes
M2/M1 [%]		67.6
Dist 3dB Peak [mm]		5.7

Measurement Results

	Area Scan	Zoom Scan
psSAR1g [W/Kg]	0.061	0.065
psSAR10g [W/Kg]	0.029	0.027
Power Drift [dB]	-0.01	-0.04



Measurement Report for ISM 2.4 GHz Band, BACK, WS50 Tx w/ WB50

Exposure Conditions

Band	ISM 2.4 GHz Band	TSL Permittivity	37.4
Frequency [MHz]   Channel Number	2440.000   17	TSL Conductivity [S/m]	1.78
Group   UID	Bluetooth   10670-AAA	Phantom Section   TSL	Flat   HSL
Conversion Factor	8.28	Test Distance [mm]	0.00
Communication Configuration		Bluetooth Low Energy	

Hardware Setup

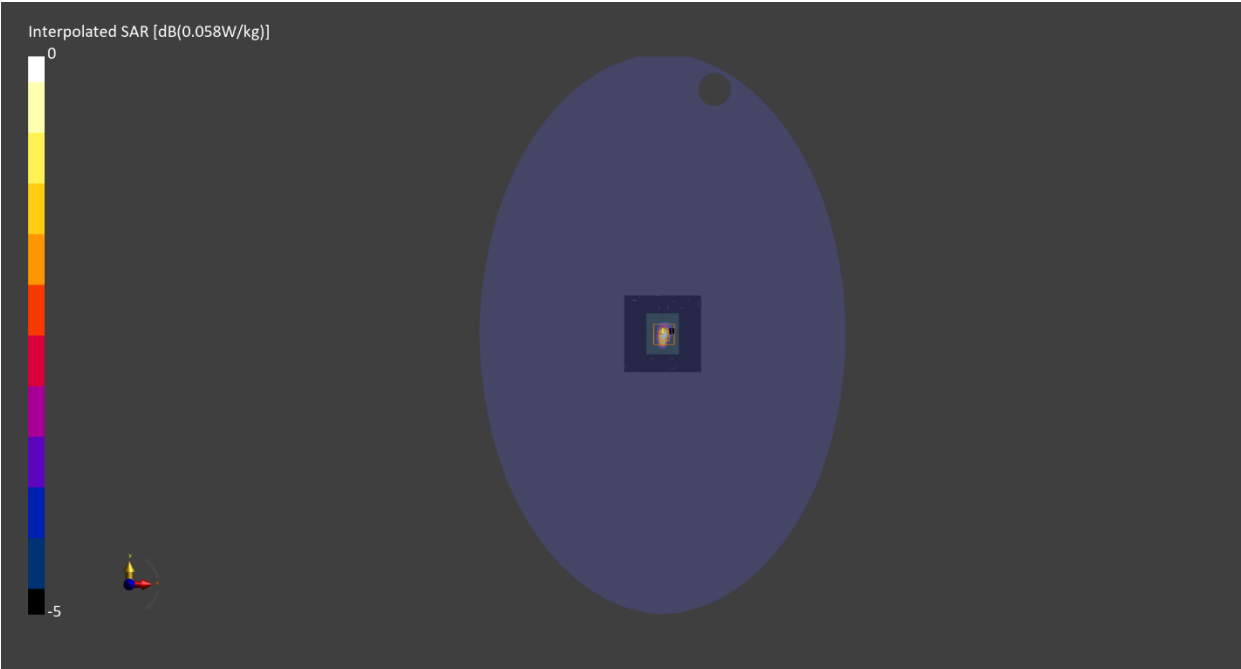
Probe   Calibration Date	EX3DV4 - SN7711   2024-03-15	Phantom	ELI V8.0 (20deg probe tilt) - SN2160
DAE   Calibration Date	DAE4 Sn1716   2024-03-13	TSL   Meas. Date	HBBL600-10000V6   2024-Jun-28

Scans Setup

	Area Scan	Zoom Scan
Grid Extents [mm]	80.0 x 80.0	30.0 x 30.0 x 30.0
Grid Steps [mm]	10.0 x 10.0	2.6 x 2.6 x 1.2
Sensor Surface [mm]	3.0	1.4
Graded Grid	N/A	Yes
M2/M1 [%]		91.0
Dist 3dB Peak [mm]		4.5

Measurement Results

	Area Scan	Zoom Scan
psSAR1g [W/Kg]	0.040	0.032
psSAR10g [W/Kg]	0.015	0.01
Power Drift [dB]	-1.27	-0.13



Measurement Report for ISM 2.4 GHz Band, BACK, WB50 Tx w/ WS50

Exposure Conditions

Band	ISM 2.4 GHz Band	TSL Permittivity	37.4
Frequency [MHz]   Channel Number	2440.000   17	TSL Conductivity [S/m]	1.78
Group   UID	Bluetooth   10670-AAA	Phantom Section   TSL	Flat   HSL
Conversion Factor	8.28	Test Distance [mm]	0.00
Communication Configuration		Bluetooth Low Energy	

Hardware Setup

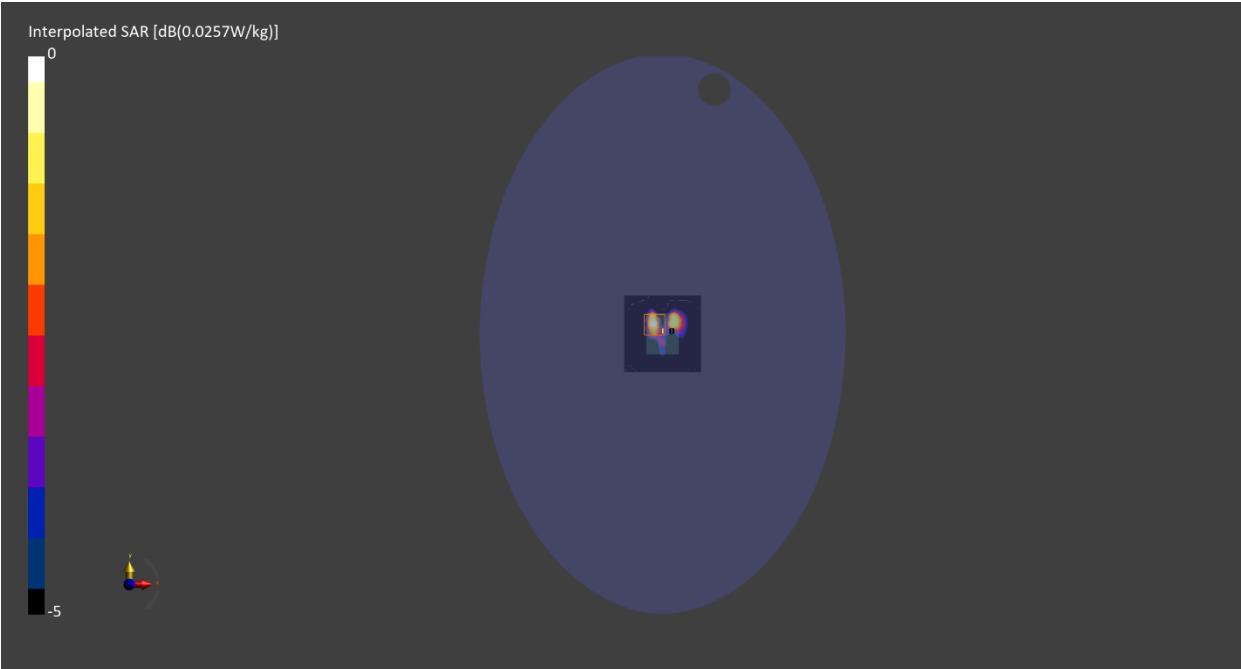
Probe   Calibration Date	EX3DV4 - SN7711   2024-03-15	Phantom	ELI V8.0 (20deg probe tilt) - SN2160
DAE   Calibration Date	DAE4 Sn1716   2024-03-13	TSL   Meas. Date	HBBL600-10000V6   2024-Jun-28

Scans Setup

	Area Scan	Zoom Scan
Grid Extents [mm]	80.0 x 80.0	30.0 x 30.0 x 30.0
Grid Steps [mm]	10.0 x 10.0	3.4 x 3.4 x 1.4
Sensor Surface [mm]	3.0	1.4
Graded Grid	N/A	Yes
M2/M1 [%]		94.9
Dist 3dB Peak [mm]		2.8

Measurement Results

	Area Scan	Zoom Scan
psSAR1g [W/Kg]	0.018	0.014
psSAR10g [W/Kg]	0.008	0.004
Power Drift [dB]	0.41	0.32



Measurement Report for ISM 2.4 GHz Band, BACK, WS50 Tx w/ WD50

Exposure Conditions

Band	ISM 2.4 GHz Band	TSL Permittivity	40.2
Frequency [MHz]   Channel Number	2440.000   17	TSL Conductivity [S/m]	1.75
Group   UID	Bluetooth   10670-AAA	Phantom Section   TSL	Flat   Head Simulating Liquid
Conversion Factor	8.28	Test Distance [mm]	0.00
Communication Configuration		Bluetooth Low Energy	

Hardware Setup

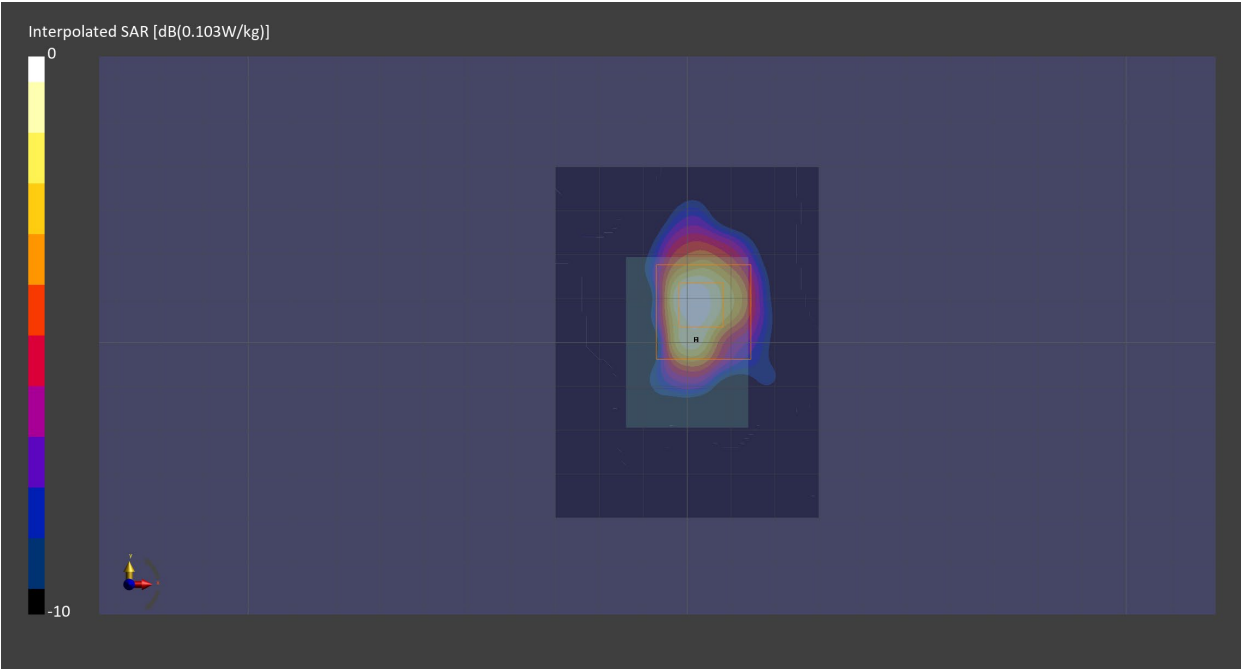
Probe   Calibration Date	EX3DV4 - SN7711   2024-03-15	Phantom	ELI V8.0 (20deg probe tilt) - SN2160
DAE   Calibration Date	DAE4 Sn1716   2024-03-13	TSL   Meas. Date	HBBL-600-10000   2024-11-15

Scans Setup

	Area Scan	Zoom Scan
Grid Extents [mm]	60.0 x 80.0	30.0 x 30.0 x 30.0
Grid Steps [mm]	10.0 x 10.0	4.1 x 4.1 x 1.4
Sensor Surface [mm]	3.0	1.4
Graded Grid	N/A	Yes
M2/M1 [%]		81.1
Dist 3dB Peak [mm]		4.2

Measurement Results

	Area Scan	Zoom Scan
psSAR1g [W/Kg]	0.037	0.039
psSAR10g [W/Kg]	0.015	0.012
Power Drift [dB]	0.45	-0.07



Measurement Report for Custom Band, BACK, WB50 Tx w/ WS50

Exposure Conditions

Band	Custom Band	TSL Permittivity	53.7
Frequency [MHz]   Channel Number	13.500   13500	TSL Conductivity [S/m]	0.733
Group   UID	CW   0--	Phantom Section   TSL	Flat   HSL
Conversion Factor	16.02	Test Distance [mm]	0.00
Communication Configuration			CW

Hardware Setup

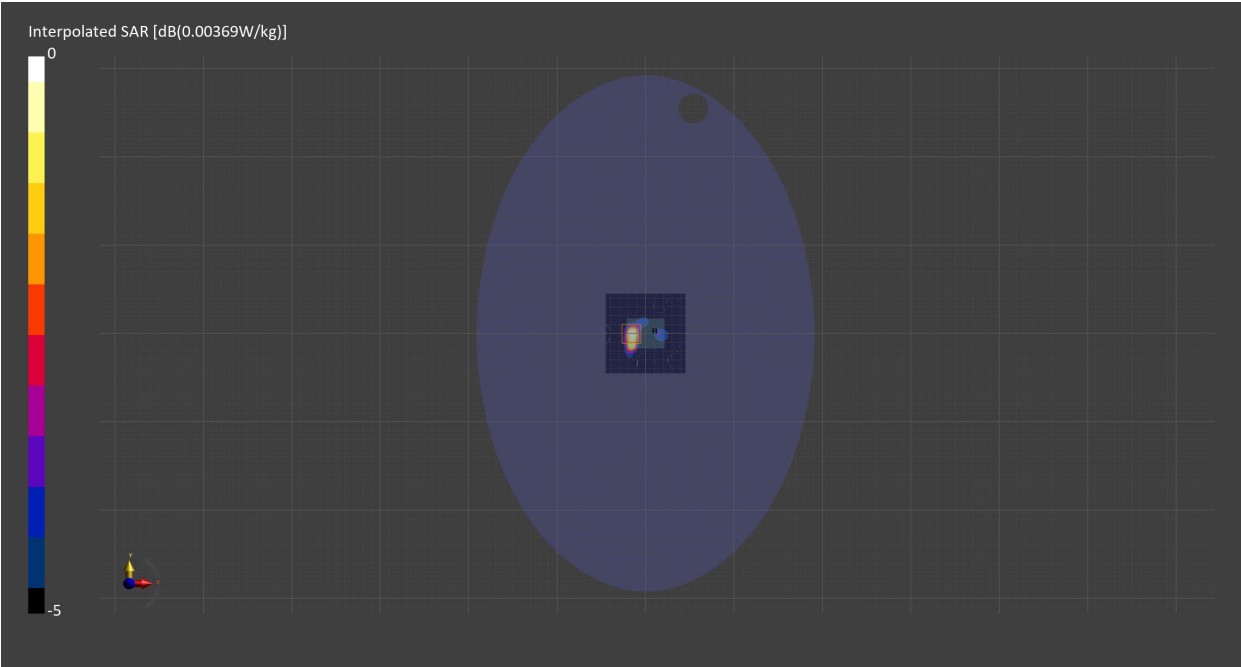
Probe   Calibration Date	EX3DV4 - SN7710   2024-01-16	Phantom	ELI V8.0 (20deg probe tilt) - SN2081
DAE   Calibration Date	DAE4 Sn1715   2024-02-12	TSL   Meas. Date	HBBL3500-5800V5   2024-Jun-17

Scans Setup

	Area Scan	Zoom Scan
Grid Extents [mm]	90.0 x 90.0	30.0 x 30.0 x 30.0
Grid Steps [mm]	15.0 x 15.0	2.1 x 2.1 x 1.2
Sensor Surface [mm]	3.0	1.4
Graded Grid	N/A	Yes
M2/M1 [%]		84.6
Dist 3dB Peak [mm]		1.3

Measurement Results

	Area Scan	Zoom Scan
psSAR1g [W/Kg]	0.003	0.001
psSAR10g [W/Kg]	0.002	0
Power Drift [dB]	N/A	-1.20



Measurement Report for Custom Band, BACK, WS50 Tx w/ WD50

Exposure Conditions

Band	Custom Band	TSL Permittivity	53.4
Frequency [MHz]   Channel Number	13.600   13600	TSL Conductivity [S/m]	0.729
Group   UID	CW   0--	Phantom Section   TSL	Flat   Head Simulating Liquid
Conversion Factor	16.02	Test Distance [mm]	0.00
Communication Configuration			CW

Hardware Setup

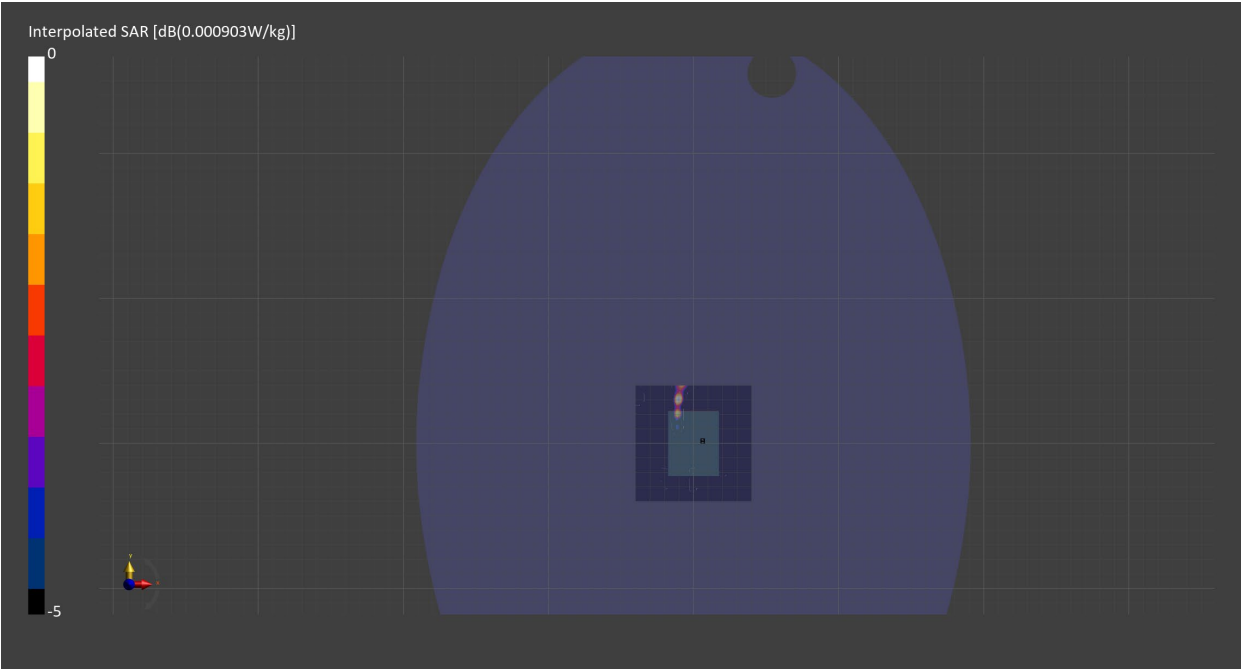
Probe   Calibration Date	EX3DV4 - SN7710   2024-01-16	Phantom	ELI V8.0 (20deg probe tilt) - SN2081
DAE   Calibration Date	DAE4 Sn1715   2024-02-12	TSL	HBBL4-250V3

Scans Setup

	Area Scan	Zoom Scan
Grid Extents [mm]	80.0 x 80.0	30.0 x 30.0 x 31.2
Grid Steps [mm]	10.0 x 10.0	1.5 x 1.5 x 1.2
Sensor Surface [mm]	3.0	1.4
Graded Grid	N/A	Yes
M2/M1 [%]		N/A
Dist 3dB Peak [mm]		N/A

Measurement Results

	Area Scan	Zoom Scan
psSAR1g [W/Kg]	0	0
psSAR10g [W/Kg]	0	0
Power Drift [dB]	N/A	N/A



Measurement Report for Custom Band, BACK, WS50 Standalone, Tag

Exposure Conditions

Band	Custom Band	TSL Permittivity	53.7
Frequency [MHz]   Channel Number	13.500   13500	TSL Conductivity [S/m]	0.733
Group   UID	CW   0--	Phantom Section   TSL	Flat   HSL
Conversion Factor	16.02	Test Distance [mm]	0.00
Communication Configuration	CW		

Hardware Setup

Probe   Calibration Date	EX3DV4 - SN7710   2024-01-16	Phantom	ELI V8.0 (20deg probe tilt) - SN2081
DAE   Calibration Date	DAE4 Sn1715   2024-02-12	TSL   Meas. Date	HBBL3500-5800V5   2024-Jun-17

Scans Setup

	Area Scan	Zoom Scan
Grid Extents [mm]	90.0 x 90.0	30.0 x 30.0 x 30.0
Grid Steps [mm]	15.0 x 15.0	0.7 x 0.7 x 1.2
Sensor Surface [mm]	3.0	1.4
Graded Grid	N/A	Yes
M2/M1 [%]		N/A
Dist 3dB Peak [mm]		N/A

Measurement Results

	Area Scan	Zoom Scan
psSAR1g [W/Kg]	0	0
psSAR10g [W/Kg]	0	0
Power Drift [dB]	N/A	N/A

