

Shenzhen KTC Commercial Display Technology CO.,LTD.

Address: No.4023, Northern Wuhe Road, Bantian Street, Longgang District, Shenzhen City,
Guangdong Province, P.R. China

Date: 2025.02.18

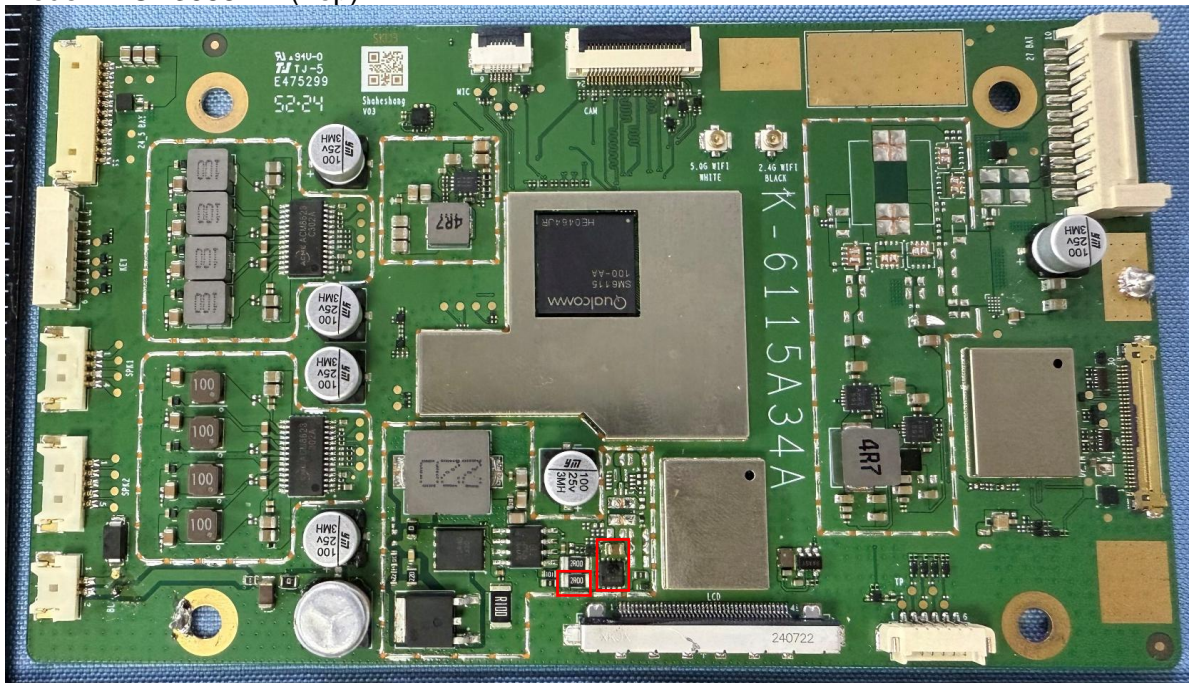
FCC ID: 2AQ5R-WCN3988

Dear Sir/Madam,

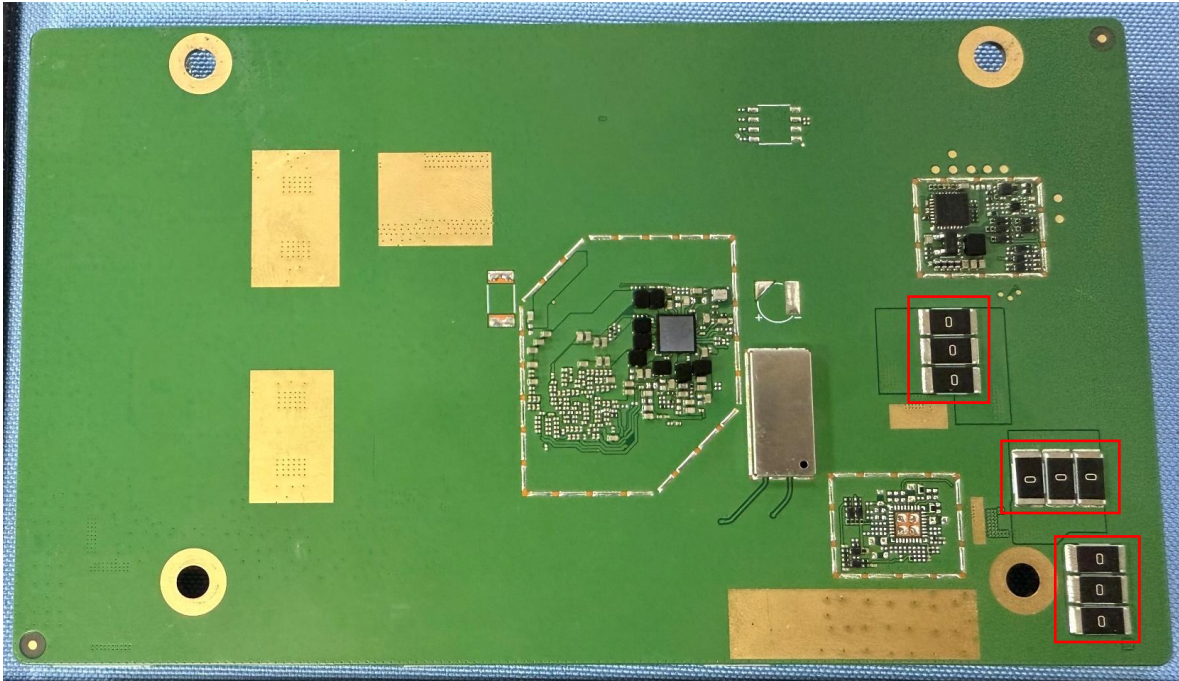
We, **Shenzhen KTC Commercial Display Technology CO.,LTD.** Hereby declares the following statement for Federal Communications Commission. All these models are identical in the same PCB, layout, electrical circuit, RF module and antenna. The difference is part of the components. See photo below inside red frame.

Product name: WiFi Module

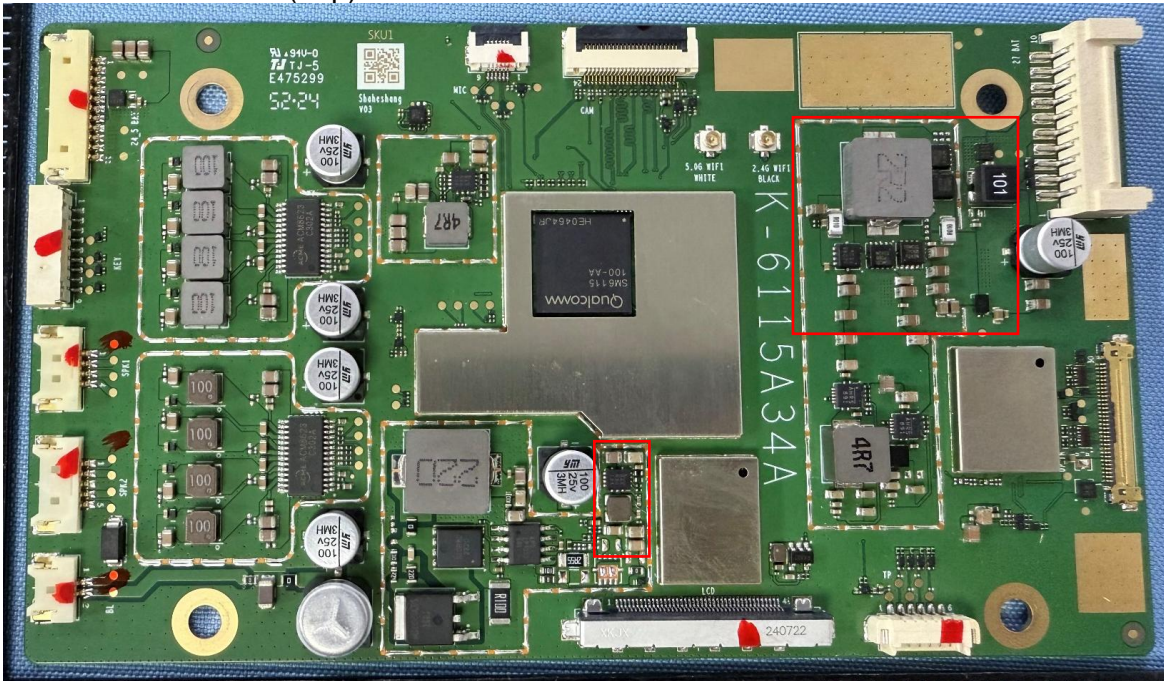
Model: WCN3988 A1 (Top)



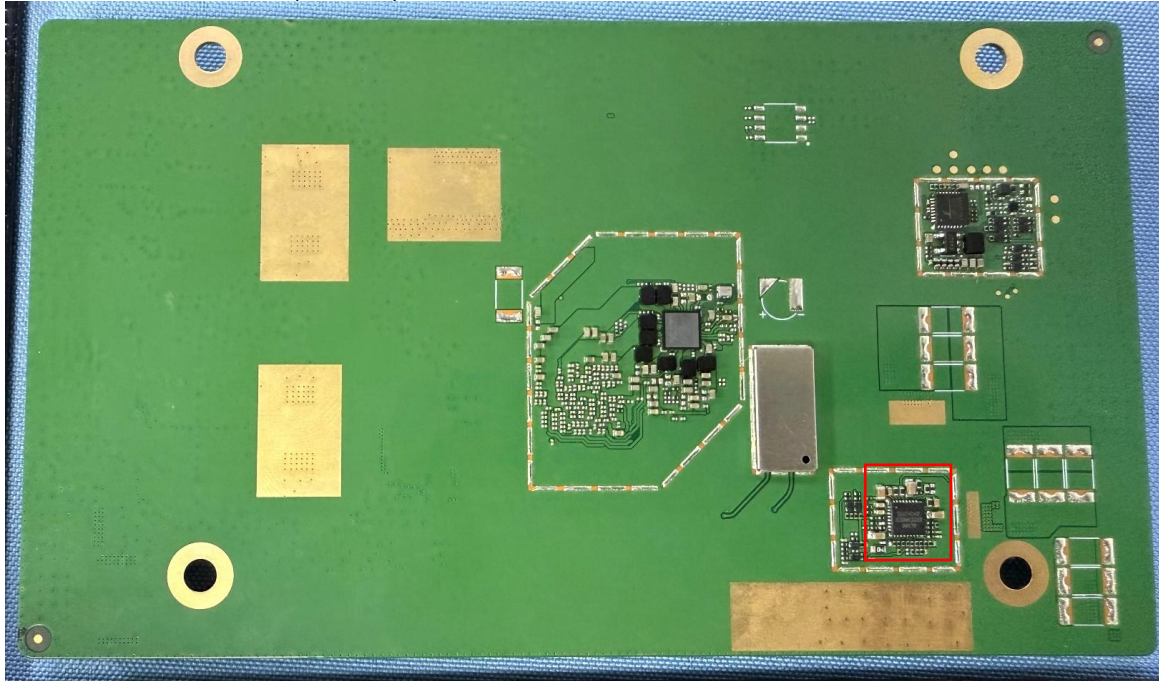
Model: WCN3988 A1 (Bottom)



Model: WCN3988 A2 (Top)



Model: WCN3988 A2 (Bottom)



The key difference between the two mainboards is the presence of the charging IC and its associated circuits. One variant integrates a dedicated charging integrated circuit (charging IC) as well as supporting power storage components, enabling advanced power supply endurance, voltage regulation, and charging safety protection mechanisms. Another variant completely ignores this charging subsystem; This circuit difference does not affect RF performance.

Sincerely,

Signature:

Handwritten signature of Liu Huan in black ink.

Printed name: Liu Huan

Title: Certification Engineer

Company Name: Shenzhen KTC Commercial Display Technology CO.,LTD.